

Los Angeles County Citizens Redistricting Commission

Highlights of Public Written Comments from December 10, 2021, Special Meeting

This document is incomplete. For full written comments with attachments, go to:

https://redistricting.lacounty.gov/wp-content/uploads/2021/12/Public_Comment_12_10_21_v2.pdf (40 pages)

Theme/Area	Highlights of Comments
AAPI	Please consider keeping Asian-American communities together. If a division must occur, then the northern cities like South Pasadena, San Marino, Temple City, and Arcadia should stick together while the southern cities like MPK, Alhambra, San Gabriel, Rosemead, and El Monte should stay together.
AAPI	See attachment for Little Tokyo, Thai Town, and Koreatown communities of interest and descriptions of how draft maps B-4 and F-3 divide them.
Beach Cities	Do not separate the Beach Cities (Manhattan Beach, Hermosa Beach, and Redondo Beach) from the rest of the South Bay (Torrance and the PV Peninsula). LAX is not a major issue for the Beach Cities.
Beach Cities	It is disappointing that the Beach Cities will be broken up (El Segundo especially), but as a former Torrance resident and with family that still lives there, I would prefer for Redondo Beach to stay with Torrance. It is such a shame to break up the South Bay like this and include Cerritos, Downey, Bellflower, South Gate, and the far eastern cities in this map. As a Redondo Beach resident, it is crucial for me that we have protection for the marina and beaches. I hope this will do it. It is far from ideal, but the lesser of two evils.
Beach Cities	Map B-4 includes the Beach Cities with the rest of the South Bay -- Torrance, Palos Verdes Peninsula, Lomita, San Pedro. The Beach Cities belong with these other cities and areas as a single community of interest. We all use the hospitals in Torrance, go to doctors in Torrance, read the Daily Breeze, etc. The Beach Cities provide the recreation areas for this entire community.
Beach Cities	The Beach Cities should be kept within the same district as the PV Peninsula, and San Pedro.
Beach Cities/ South Bay	The South Bay communities together comprise a community of interest (Torrance, Lomita, Redondo Beach, Hermosa Beach, Manhattan Beach) that should remain together. Our interests are more closely tied with the Harbor and port regions than with DTLA or South LA. Our communities have historically been linked as port cities and continue to share similar concerns related to coastal ecosystems and economies. This map retains a similar District 4 configuration to the current supervisor map, and though the horse-shoe shape may look strange, it does represent the usual connectedness of these communities as people generally live, work, play, and worship between the South Bay and Harbor regions.

Theme/Area	Highlights of Comments
Beach Cities/ South Bay	The South Bay includes Torrance, and we are closely linked between commerce, schools, and workplaces: El Camino College is the community college in Torrance that serves high school graduates from South Bay high schools. The South Bay Cities COG, headquartered in Torrance, undertakes region-wide planning and coordination across all South Bay Cities. We also have shared state and federal representation for the South Bay region. Splitting the Beach Cities from Torrance would disrupt coordination of services and representation for the entire South Bay. Thank you.
Beach Cities/ South Bay	The South Bay should stay with Palo Verdes and San Pedro
Burbank- Glendale	Keep Burbank and Glendale and Pasadena together.
Chinatown	Keep Chinatown with our neighbor communities of Solano Canyon, Victor Heights, the State Historic Park, and Lincoln Heights.
DTLA	Keep Plaza, Olvera Street, and the Music Center in SD 1, especially due to the historic significance of those to the communities of that district.
DTLA-Beach	Downtown L.A.do not share the same issues and needs that need to be addressed as the coastal communities in the South Bay.
Gateway Cities	Keep Gateway Cities together from Whittier in the north to Long Beach and San Pedro in the South.
Gateway Cities: La Mirada	Keep City of La Mirada with Gateway Cities
Gateway Cities: Whittier	Keep Whittier with the Gateway Cities in SD 4; include La Mirada. Do not split Santa Fe Springs and Norwalk into two districts.
Jewish Community	Do not split the Orthodox Jewish community into 2 or 3 different districts....
Korea Town (KAC)	Amend Map F-3 as Koreatown is still not whole. Please see Exhibit 1 as the map of Koreatown that the People’s Bloc previously submitted for reference. We are missing several blocks on our south-eastern part of Koreatown Please see Exhibit 2 which outlines the missing blocks in red.

Theme/Area	Highlights of Comments
La Tuna Canyon	Please, please do not separate La Tuna Canyon by North and South. To put our south side of the homes and mountain into a separate district would be extremely detrimental to our way of life. We are a horse keeping and rural living neighborhood, and should be kept in one district. Not to mention the fire danger the whole canyon faces as a whole. Not just the north or south side. We should be kept whole. Please, keep our neighborhood in one piece! Thank you
MDR	Do not separate Marina del Rey from Ballona Wetlands. It is critical that these connected areas and eco systems remain together in the same district
MDR-Westland	I prefer Map B2 if it is still on the table but if not, B4 keeps Marin del Rey together with the Ballona Wetlands in one district, which is critical to protect these integrated eco systems
Olivera	This map ensures that Olivera Street and LA Plaza de Cultura y Artes - both longtime cultural institutions that are deeply weaved into the identity of the Eastside community - remain in the same supervisorial district together with the community that they most serve. As a longtime resident of Highland Park, and now La Puente, both Olivera Street and LA Plaza have each been a source of pride and a reminder of our historical roots. To split them away into a different Supervisorial District would be a disservice to the constituents of the Eastside communities.
Palos Verdes Peninsula	Keep Peninsula cities and communities together: City of Rolling Hills Estates, located on the Palos Verdes Peninsula
Pico Union, Westlake, MacArthur Park	Keep Pico Union, Westlake, and MacArthur Park together and connected with Echo Park and East Los Angeles – in one Supervisorial District. In fact, Echo Park is in the Westlake district of east-central Los Angeles.
Playa del Rey/ Westchester	Keeps Playa del Rey and Westchester together and fully intact. We are sister communities and share a Neighborhood Council.
Pomona	Cities of San Dimas, La Vern, Pomona, and Claremont share a community of interest
Pomona	Keep Fairplex, City of Pomona and CARVANA agreement, impacting San Dimas, Claremont, La Vern, Pomona truck diesel pollution
Pomona	Keep Pomona whole with the Fairplex in SD 1 (Note: La Verne having a sliver of Fairplex)
Rowland Heights	Keep Rowland Heights and Hacienda Heights together in SD 4
Rowland Heights	Keep Rowland Heights, Walnut, and Diamond Bar together; do not remove Hacienda Heights from Rowland Heights and “push” us into a district with Whittier to the west and City of Industry to the north

Theme/Area	Highlights of Comments
SELA	I love how F-3 map keeps the SELA-Gateway Cities region together by including cities of Whittier, Huntington Park, and Downey in District 4. Do move the city Torrance to District 2 so that it can stay together with the other South Bay cities.
SFV	Do not divide the communities of Chatsworth, Porter Ranch, West Hills, and Granada Hills from SD 3.
SFV	Keep SFV whole
SFV	Unsplit West Hills and put it back in SD 3
SFV and Media District	... the "Valley" and the "Media District" are not synonymous. Indeed, from the 1910's forward the workings of the "Movie Business" could be found all over Los Angeles County. By 1934, Union contracts were being negotiated within the "Studio Zone" a 6-mile (9.7 km) radius from Rossmore Avenue and 5th Street. By 1970, the center of the zone became Beverly and La Cienega Boulevards, the then headquarters of the Association of Motion Picture and Television Picture and Television Producers (AMPTP). By 1970, the zone expanded to a 30-mile radius, better known as "TMZ." I cannot imagine the how it would be possible to create a singular Supervisorial District that would cover the TMZ. en.wikipedia.org/wiki/Studio_zone#/map/0
SGV: Chinatown	Chinatown, Monterey Park, Alhambra, and Rosemead should not be separated from the rest of the West SGV, such as San Gabriel City, South Pasadena San Marino, Temple City, and Arcadia at the Assembly, Senate and Congressional levels.
SGV: Chinatown	Keep Chinatown and the rest of West San Gabriel Valley cities in one district because lots of the Chinatown residents have their friends, relatives, family members, business live/located in WSGV.
SGV: Foothills	Keep the foothill communities along the 210 freeway in one district, along with those communities north of the San Gabriel Mountains
SGV: Foothills	SGV best served by 2 SDs. Keep foothill cities together (Pasadena, Sierra Madre, Arcadia, Monrovia, Duarte, Bradbury, Azusa, Glendora, San Dimas, La Verne, and Claremont; keep San Marino and Arcadia together
Shadow Hills	Map F-3 keeps all of Shadow Hills, Stonehurst, Lake View Terrace, La Tuna Canyon, and the Big T-wash and Hansen Dam in District 5. MUST keep Shadow Hills as a community unit...
Tri-Cities	Keep Pasadena, Glendale, Burbank, and the Foothill Communities of interest together, given their geographic proximity and shared churches, schools, businesses, communal services, and collaboration
West Hollywood, Santa Monica	West Hollywood is satisfied with the current maps as it will keep West Hollywood within district 3 along with cities such as Beverly Hills and Santa Monica

Theme/Area	Highlights of Comments
Westside	...in an attempt to create less-competitive districts, all but one of which would stretch in excess of 35 miles from end-to-end. The result of this map is that one could drive just four short miles along Santa Monica Boulevard, through contiguous communities, and cross three Supervisorial boundaries. Even more unbelievably, F-2 somehow manages to divide the San Gabriel Valley, Gateway Cities, South Bay, and Westside communities into three different Supervisorial districts each. That is quite the accomplishment.
General	<p>I support this map with the modifications in map 100. Map 100 takes the benefits of map 81 and other COI testimonies and combines them in a compromise map.</p> <p>SD1- Uniests K-Town with the other API communities in SD1, Keeps Pomona and other essential worker communities of the SGV united and is a 52% Latino CVAP</p> <p>SD2- Keeps all historic Black communities together adds Lynwood and LAX and El Segundo without picking up all the beach communities. still 28+% Black CVAP</p> <p>SD3- Takes Beach communities north of LAX with Santa Monica bay and the Malibu areas and is able to keep the valley entirely in SD3</p> <p>SD4- Remains a Latino 50% + CVAP and Unites the South Bay beach cities with both ports and the SLA areas.</p> <p>SD5- Unites the San Gabriel Valley Foothills with the Santa Monica Mountain foothills</p>

Map 101 (submitted by People’s Bloc) Highlights

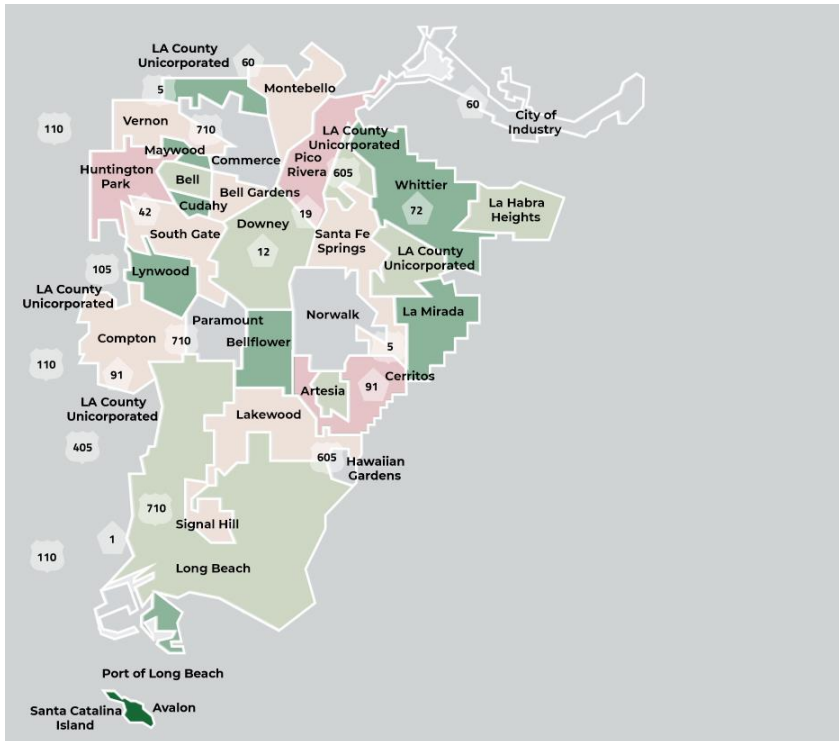
#	Changes Made to F-3	Reasoning
1	Move Hollywood, Hollywood Hills, Universal City, Toluca Lake, and Griffith Park to SD5	Creating an entertainment district in SD5, uniting Hollywood, Hollywood Hills, Universal City, Toluca Lake, and Burbank.
2	Move Playa Vista and Del Rey to SD3	Uniting these cities with similar communities of Mar Vista and Venice in SD3.
3	Move the remained of Pico Union and parts of Downtown, including Skid Row, to SD2	Skid Row is part of an SD2 COI, and this change is similar to the SD2 configuration in Map B-4 in the northeast. This also keeps the Koreatown COI whole in SD2.
4	Move La Habra Heights to SD4 and North Whittier to SD1	Following public testimony in the East San Gabriel Valley to separate La Habra Heights from Roland Heights and Hacienda Heights.
5	Move Azusa and Citrus to SD1	Connecting this heavily Latinx part of the foothills to similar communities in SD1.
6	Make Thai Town and East Hollywood whole in SD1	Thai Town has a small cut on N. Western Ave in F-3.

South Bay Council of Governments

South Bay Cities Council of Governments Map



Gateway Cities Council of Governments



Maps Describing West Hills and SFV

https://redistricting.lacounty.gov/wp-content/uploads/2021/12/CRowe_12_10_21.pdf

Maps Describing Korea Town

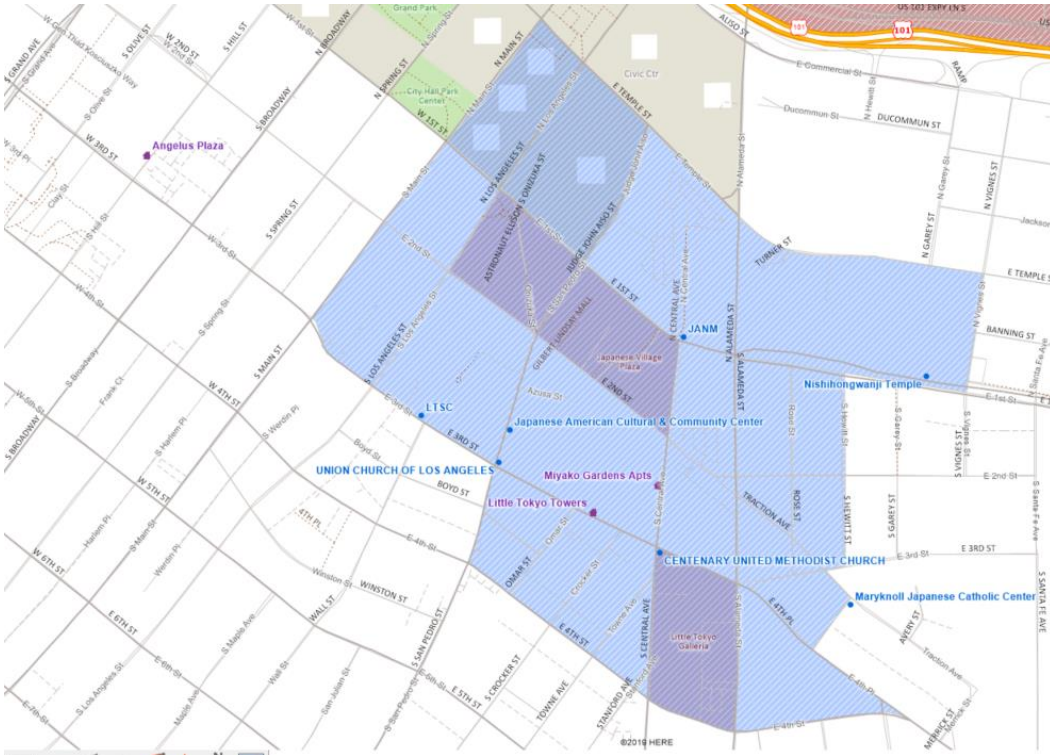
(see next page)

Candice Cho

Asian Pacific Policy & Planning Council

The following pages illustrate the Little Tokyo, Koreatown, and Thai Town communities of interest (COI) as defined by community members and how the Commission's draft maps B-4 and F-3 do not keep these COIs whole.

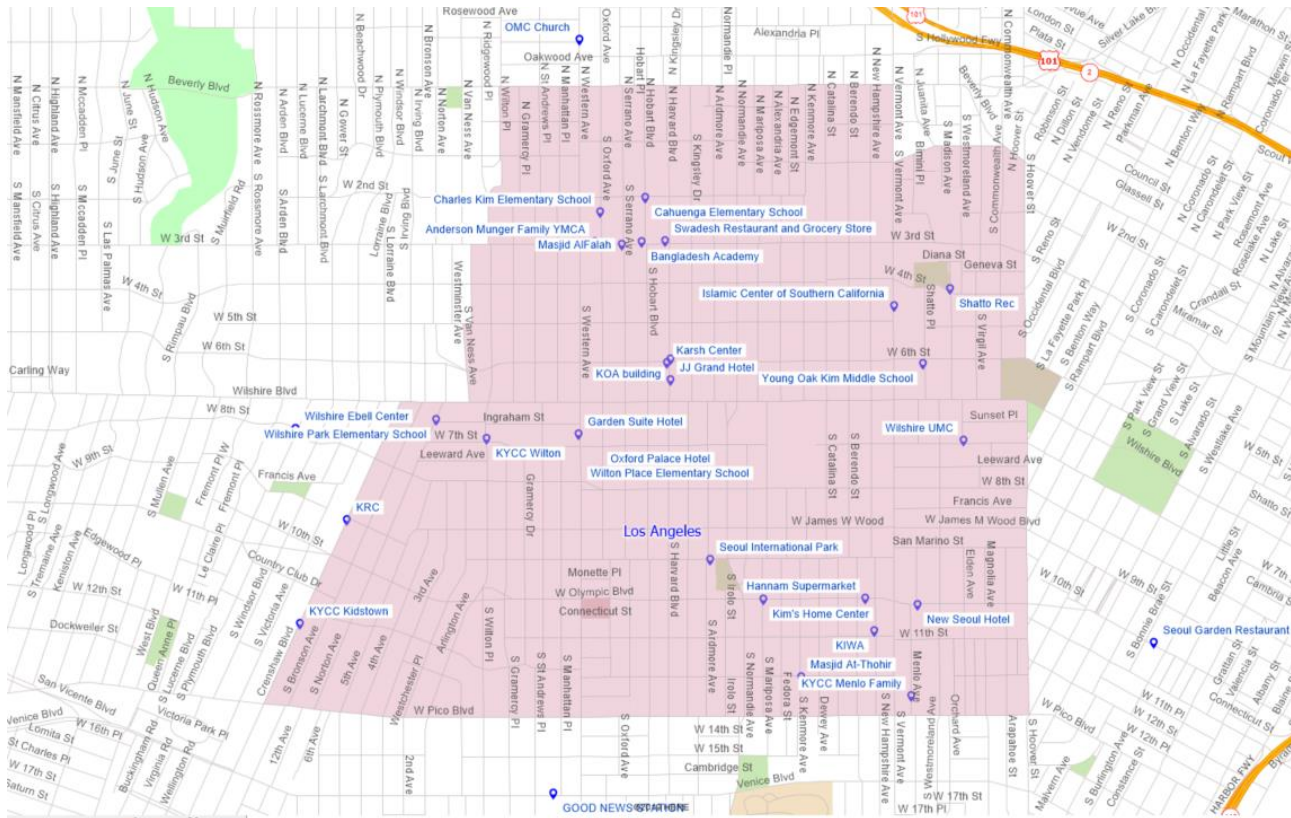
Little Tokyo COI:



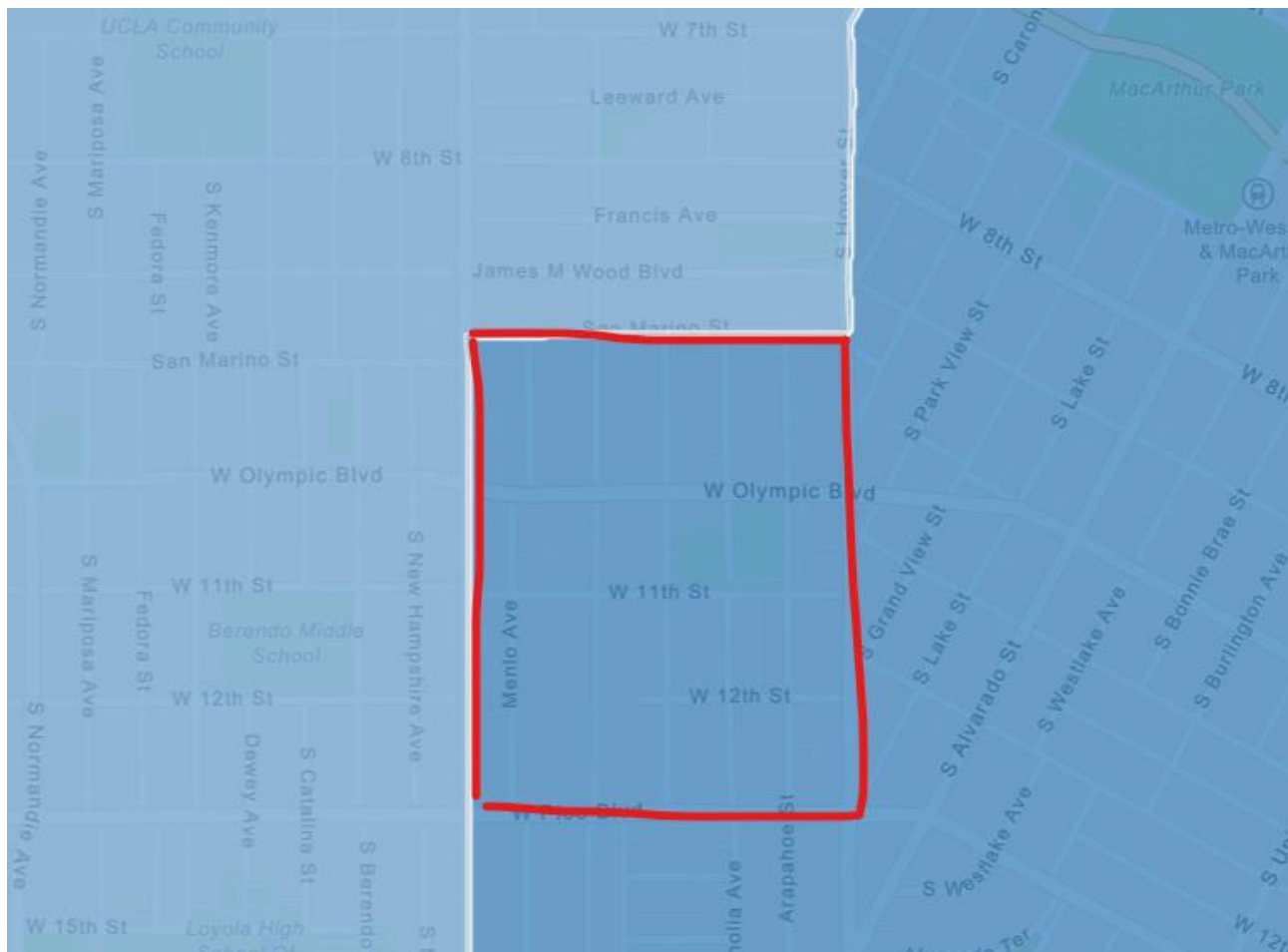
Map B-4 (red lines indicate Little Tokyo COI, to illustrate how map divides this community):



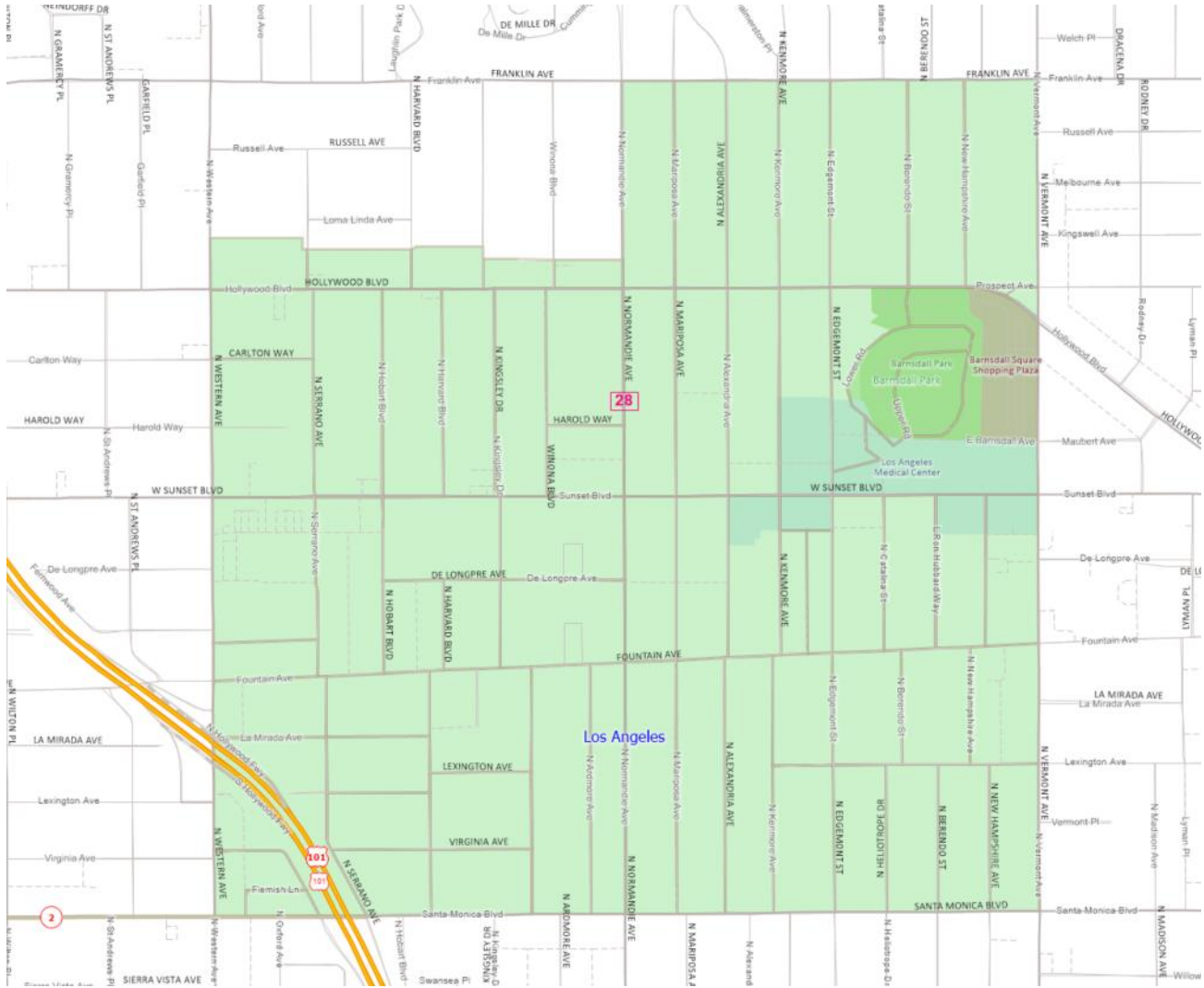
Koreatown COI:



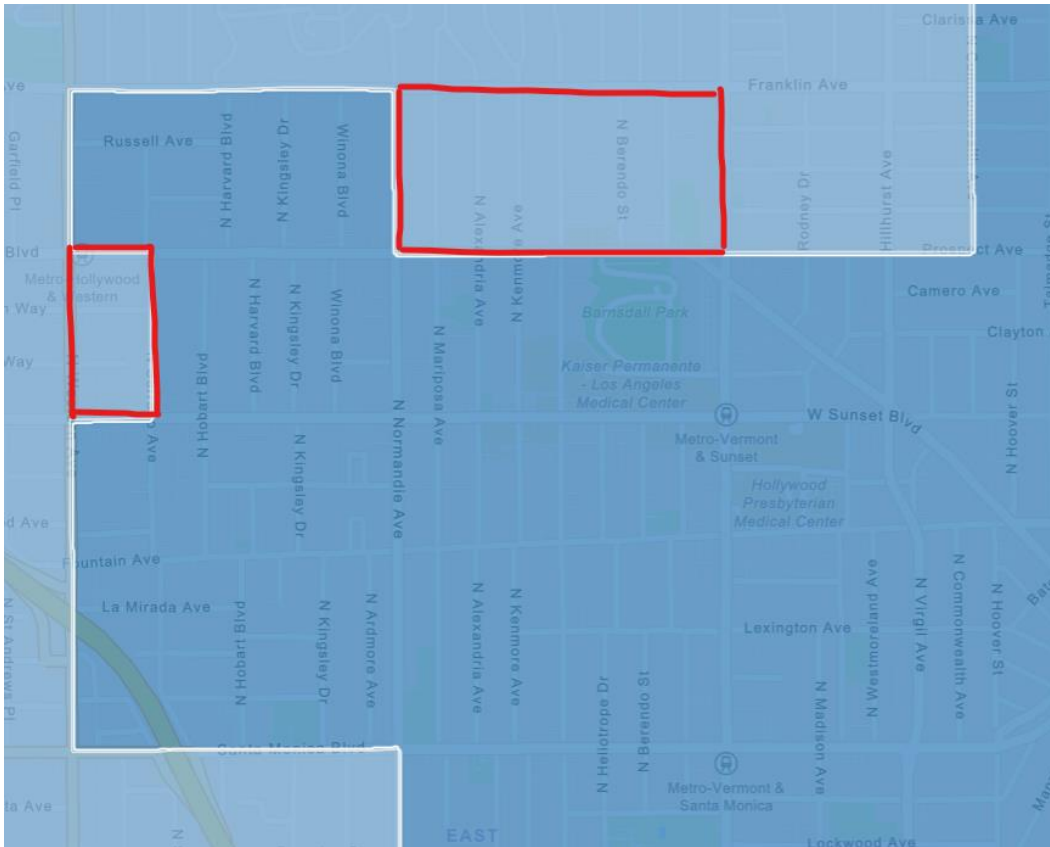
Map F-3 (red lines indicate missing part of Koreatown COI, bound by Hoover, San Marino, Vermont, and Pico):



Thai Town COI:



Map B-4 (red lines indicate missing parts of Thai Town COI; the west piece is bound by Serrano, Western, Hollywood, and Sunset, and the north piece is bound by Franklin, Prospect, Vermont, and Normandie):



Map F-3 (red lines indicate missing part of Thai Town COI, bound by Serrano, Western, Hollywood, and Sunset):

