



LOS ANGELES COUNTY **REDISTRICTING 2021**

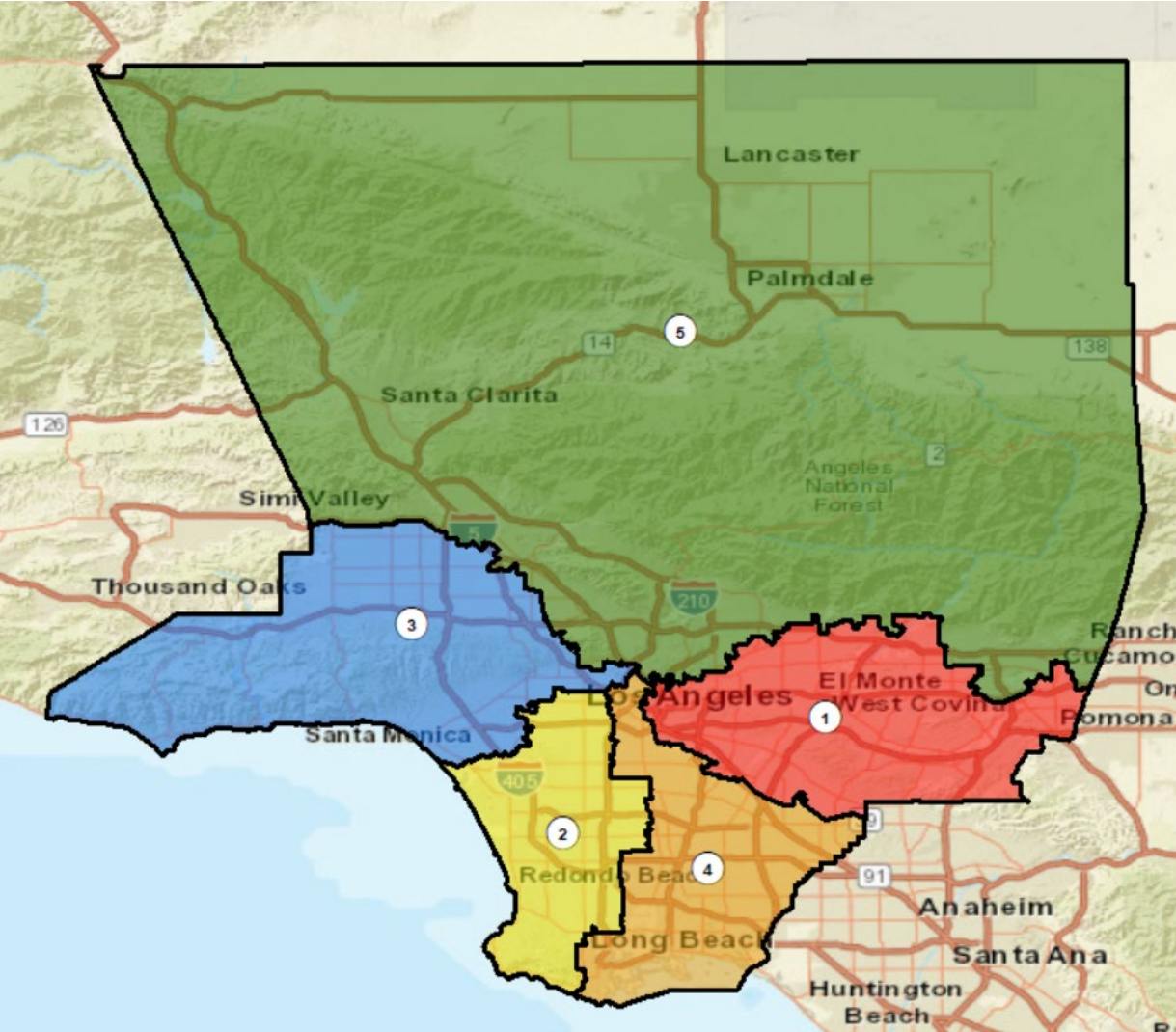
ANALYSIS OF Draft Plan
Name: Draft Map D – Revised 11-11-21

Presentation to the County of LOS ANGELES
CITIZENS REDISTRICTING COMMISSION

ARCBridge Consulting & Training Inc.
www.arcbridge.com



Plan Name: Draft Map D

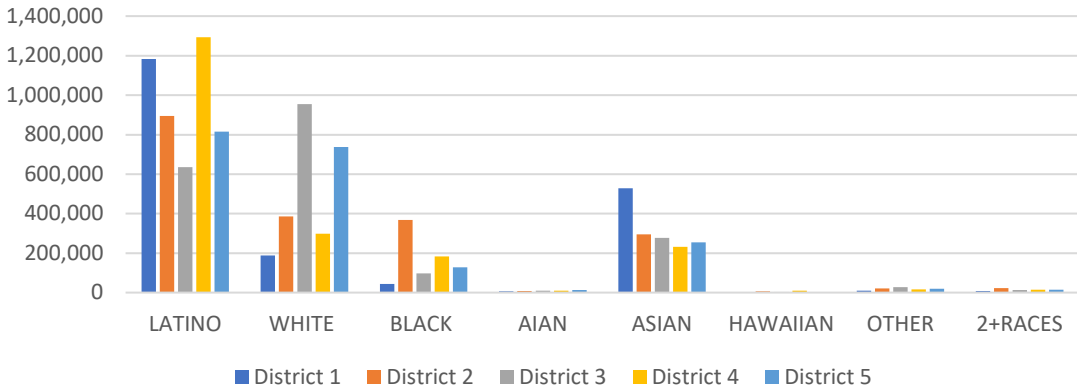


Maximum Deviation **-4.27%**

Name	Total Pop	Deviation	Deviation %
1	1,973,153	-36,432	-1.81%
2	2,004,992	-4,593	-0.23%
3	2,020,897	11,312	0.56%
4	2,058,900	49,315	2.45%
5	1,989,984	-19,601	-0.98%

District	Latino	%	White	%	Black	%	Asian	%
1	1,182,609	59.93%	189,191	9.59%	43,726	2.22%	529,078	26.81%
2	894,589	44.62%	386,238	19.26%	368,421	18.38%	294,739	14.70%
3	635,248	31.43%	954,081	47.21%	98,124	4.86%	277,055	13.71%
4	1,293,491	62.82%	298,190	14.48%	183,534	8.91%	232,377	11.29%
5	815,766	40.99%	738,241	37.10%	129,026	6.48%	254,843	12.81%

Ethnic and Racial Information by District



CENSUS 2020 POPULATION AND CITIZEN VOTING AGE POPULATION

TOTAL POPULATION

	District 1	District 2	District 3	District 4	District 5
LATINO	1,182,609	894,589	635,248	1,293,491	815,766
LATINO %	59.93%	44.62%	31.43%	62.82%	40.99%
WHITE	189,191	386,238	954,081	298,190	738,241
WHITE%	9.59%	19.26%	47.21%	14.48%	37.10%
BLACK	43,726	368,421	98,124	183,534	129,026
BLACK %	2.22%	18.38%	4.86%	8.91%	6.48%
AIAN	6,674	8,025	10,587	9,944	14,029
AIAN %	0.34%	0.40%	0.52%	0.48%	0.70%
ASIAN	529,078	294,739	277,055	232,377	254,843
ASIAN %	26.81%	14.70%	13.71%	11.29%	12.81%
HAWAIIAN	2,306	6,875	3,244	10,244	2,970
HAWAIIAN %	0.12%	0.34%	0.16%	0.50%	0.15%
OTHER	10,862	22,247	28,583	16,081	20,686
OTHER %	0.55%	1.11%	1.41%	0.78%	1.04%
2+RACES	8,707	23,858	13,975	15,039	14,423
2+RACES%	0.44%	1.19%	0.69%	0.73%	0.72%
TOTAL	1,973,153	2,004,992	2,020,897	2,058,900	1,989,984

VOTING AGE POPULATION

District 1	District 2	District 3	District 4	District 5
890,199	655,702	486,246	949,534	598,014
57.00%	41.38%	28.98%	59.33%	38.11%
169,184	334,613	830,284	266,576	627,470
10.83%	21.11%	49.49%	16.66%	39.99%
36,753	299,896	83,234	148,040	98,457
2.35%	18.92%	4.96%	9.25%	6.27%
5,606	6,683	9,205	8,622	11,778
0.36%	0.42%	0.55%	0.54%	0.75%
444,207	247,744	233,905	197,303	205,484
28.44%	15.63%	13.94%	12.33%	13.10%
1,815	5,414	2,604	8,063	2,377
0.12%	0.34%	0.16%	0.50%	0.15%
7,697	16,598	22,162	11,743	15,509
0.49%	1.05%	1.32%	0.73%	0.99%
6,261	18,087	10,114	10,568	9,962
0.40%	1.14%	0.60%	0.66%	0.63%
1,561,722	1,584,737	1,677,754	1,600,449	1,569,051

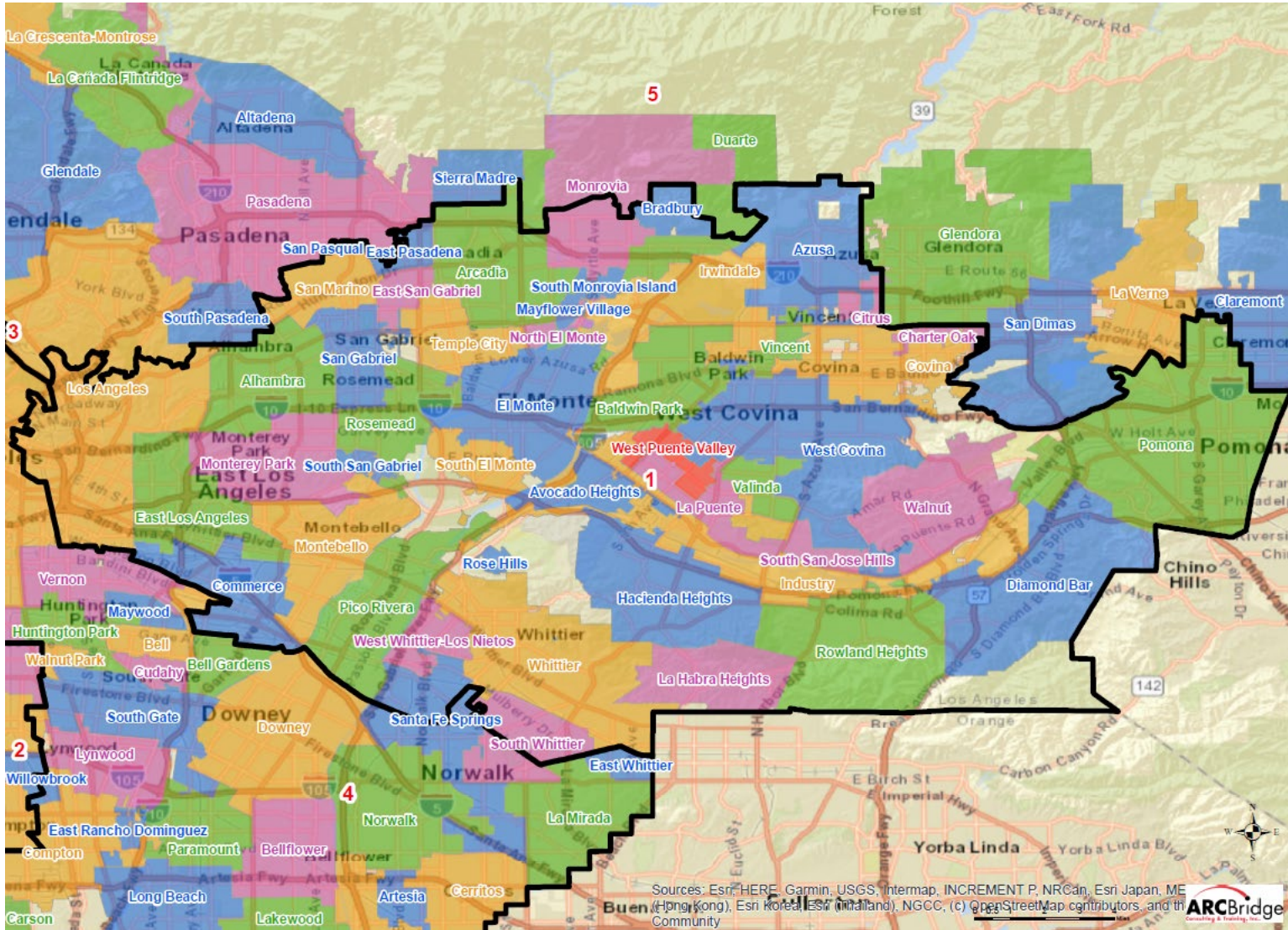
CITIZEN VOTING AGE POPULATION

District 1	District 2	District 3	District 4	District 5
674,284	394,052	328,137	616,928	438,367
54.55%	32.87%	23.84%	51.28%	33.70%
181,491	312,233	783,818	271,234	594,904
14.68%	26.05%	56.94%	22.54%	45.73%
36,555	300,558	78,161	142,751	92,116
2.96%	25.07%	5.68%	11.87%	7.08%
N/A	N/A	N/A	N/A	N/A
N/A	N/A	N/A	N/A	N/A
331,103	171,939	170,060	152,371	156,296
26.79%	14.34%	12.35%	12.67%	12.01%
N/A	N/A	N/A	N/A	N/A
N/A	N/A	N/A	N/A	N/A
12,544	20,039	16,367	19,795	19,208
1.01%	1.67%	1.19%	1.65%	1.48%
N/A	N/A	N/A	N/A	N/A
N/A	N/A	N/A	N/A	N/A
1,235,977	1,198,821	1,376,543	1,203,079	1,300,891

NUMBER OF SPLIT CITIES/CSAS, LA CITY NEIGHBORHOOD COUNCILS, COIS

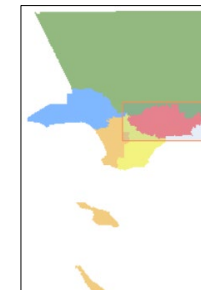
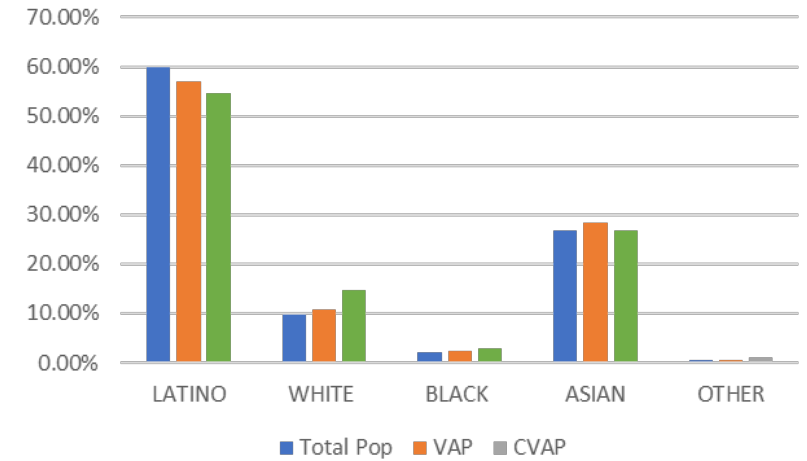
Max Deviation	Number of Districts with Polsby Popper-Compactness Score of >.2	# Majority Minority Districts		Splits		Community of Interest Models (COI)		
		Based on Total Population	Based on CVAP	Consolidated Statistical Areas (CSAs) # CSAs	Neighborhood Councils	COI A	COI B	COI C
4.27%	4	2	2	36	30	19	17	19

District 1



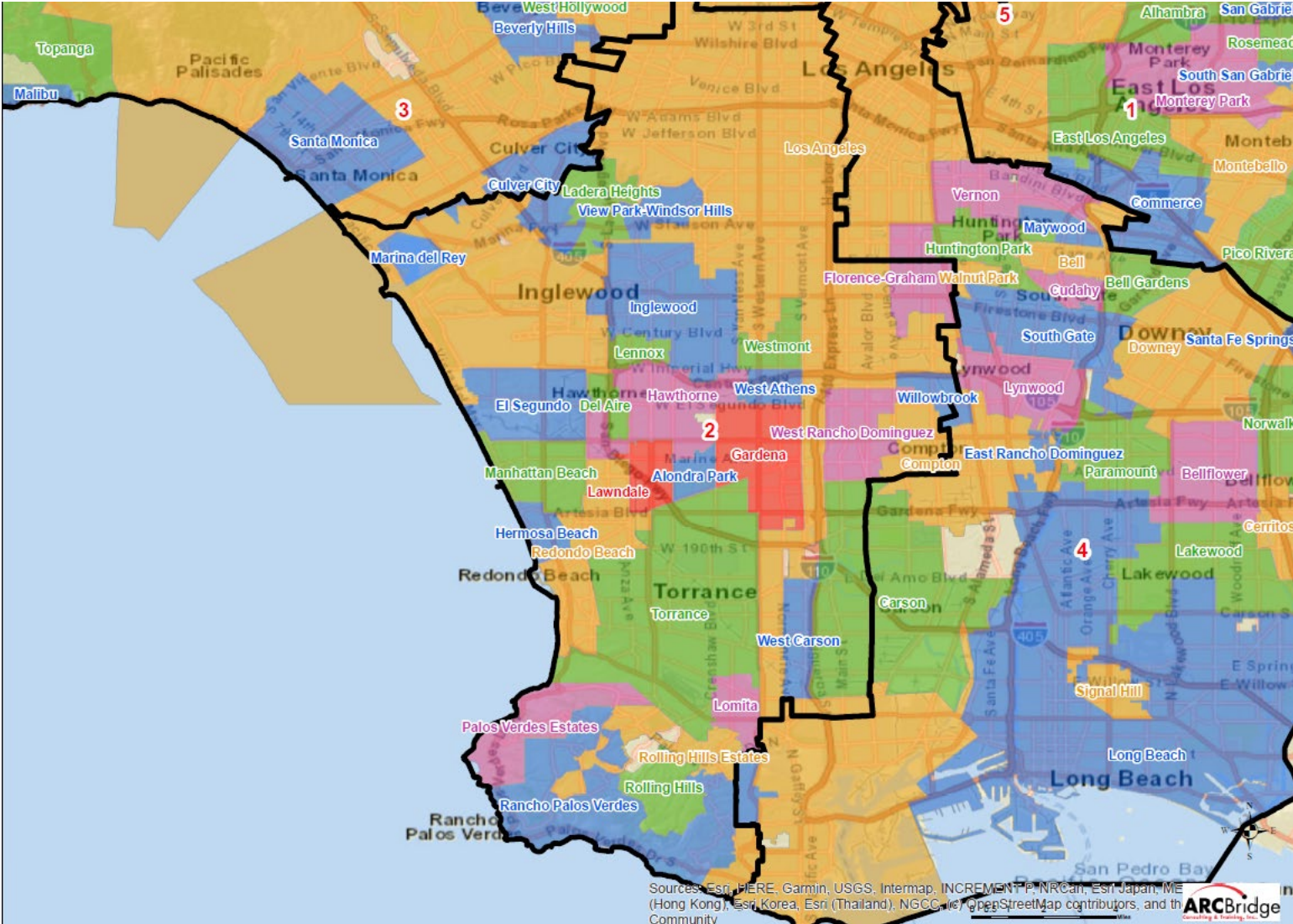
Name	Total Pop	Deviation	Deviation %
1	1,973,153	-36,432	-1.81%

Total Pop, VAP, CVAP



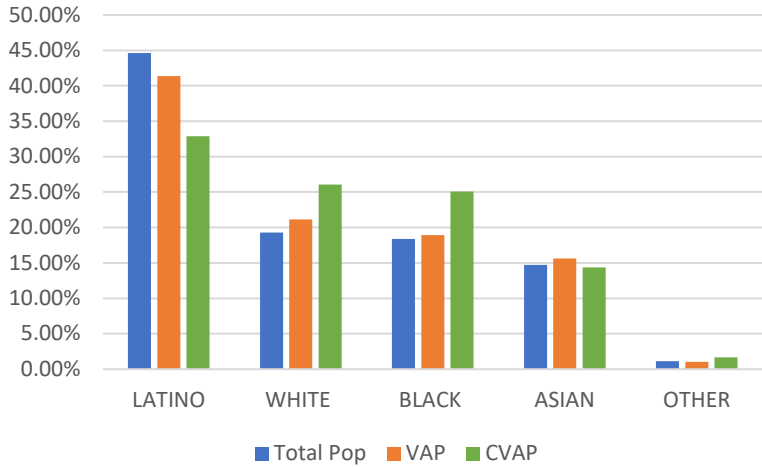
District 1	Total Pop	VAP	CVAP
LATINO	59.93%	57.00%	54.55%
WHITE	9.59%	10.83%	14.68%
BLACK	2.22%	2.35%	2.96%
ASIAN	26.81%	28.44%	26.79%
OTHER	0.55%	0.49%	1.01%

District 2



Name	Total Pop	Deviation	Deviation %
2	2,004,992	-4,593	-0.23%

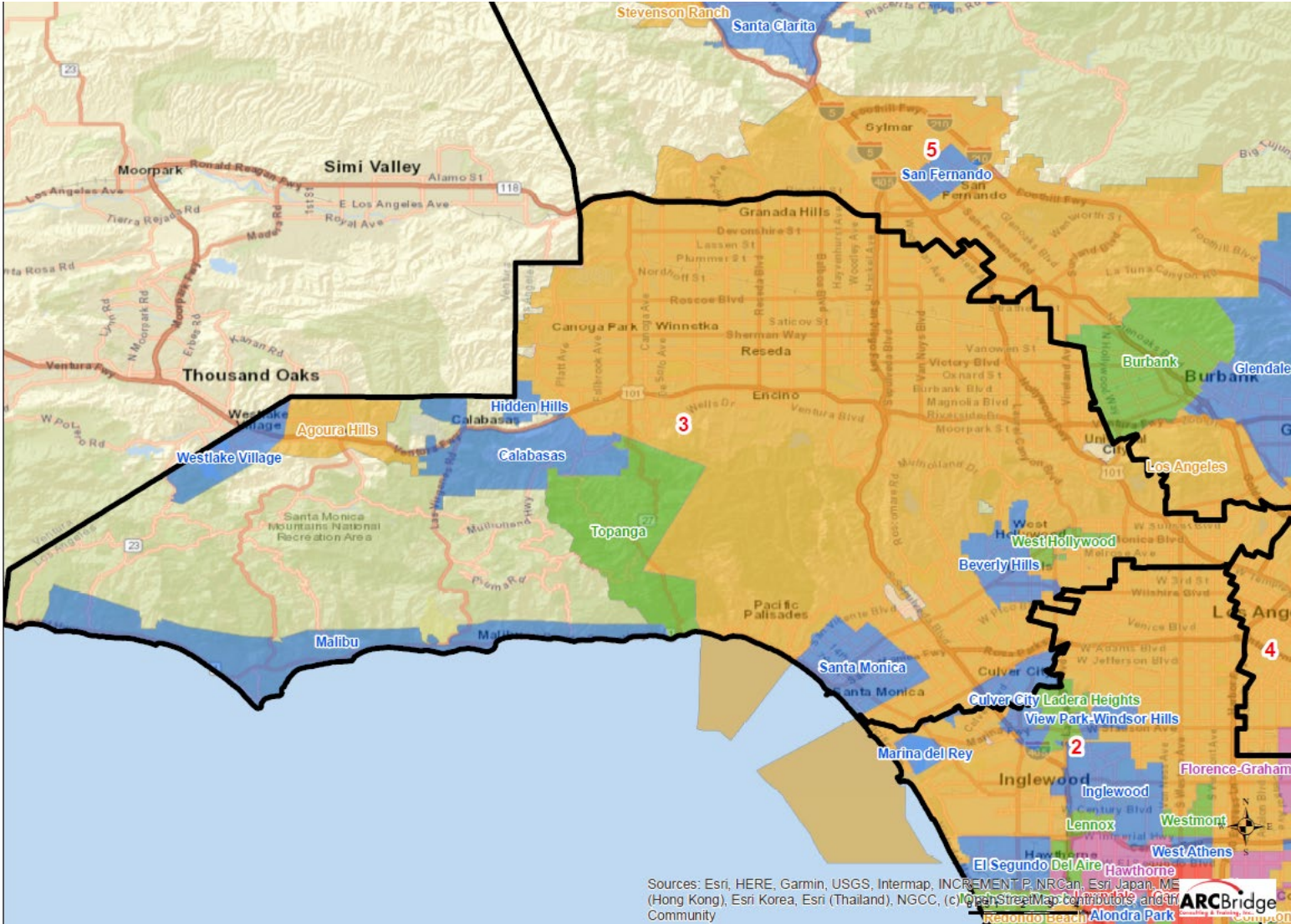
Total Pop, VAP, CVAP



District 2	Total Pop	VAP	CVAP
LATINO	44.62%	41.38%	32.87%
WHITE	19.26%	21.11%	26.05%
BLACK	18.38%	18.92%	25.07%
ASIAN	14.70%	15.63%	14.34%
OTHER	1.11%	1.05%	1.67%

Sources: Esri, HERE, Garmin, USGS, Intermap, INCREMENT P, NRCan, Esri Japan, ME (Hong Kong), Esri Korea, Esri (Thailand), NGCC, (cc) OpenStreetMap contributors, and the Community

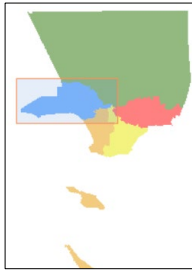
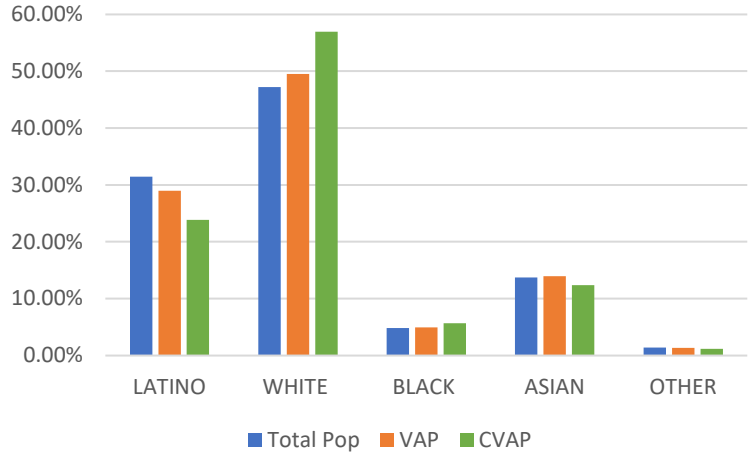
District 3



Sources: Esri, HERE, Garmin, USGS, Intermap, INCREMENT P, NRCan, Esri Japan, EMS (Hong Kong), Esri Korea, Esri (Thailand), NGCC, (c) OpenStreetMap contributors, and the Community

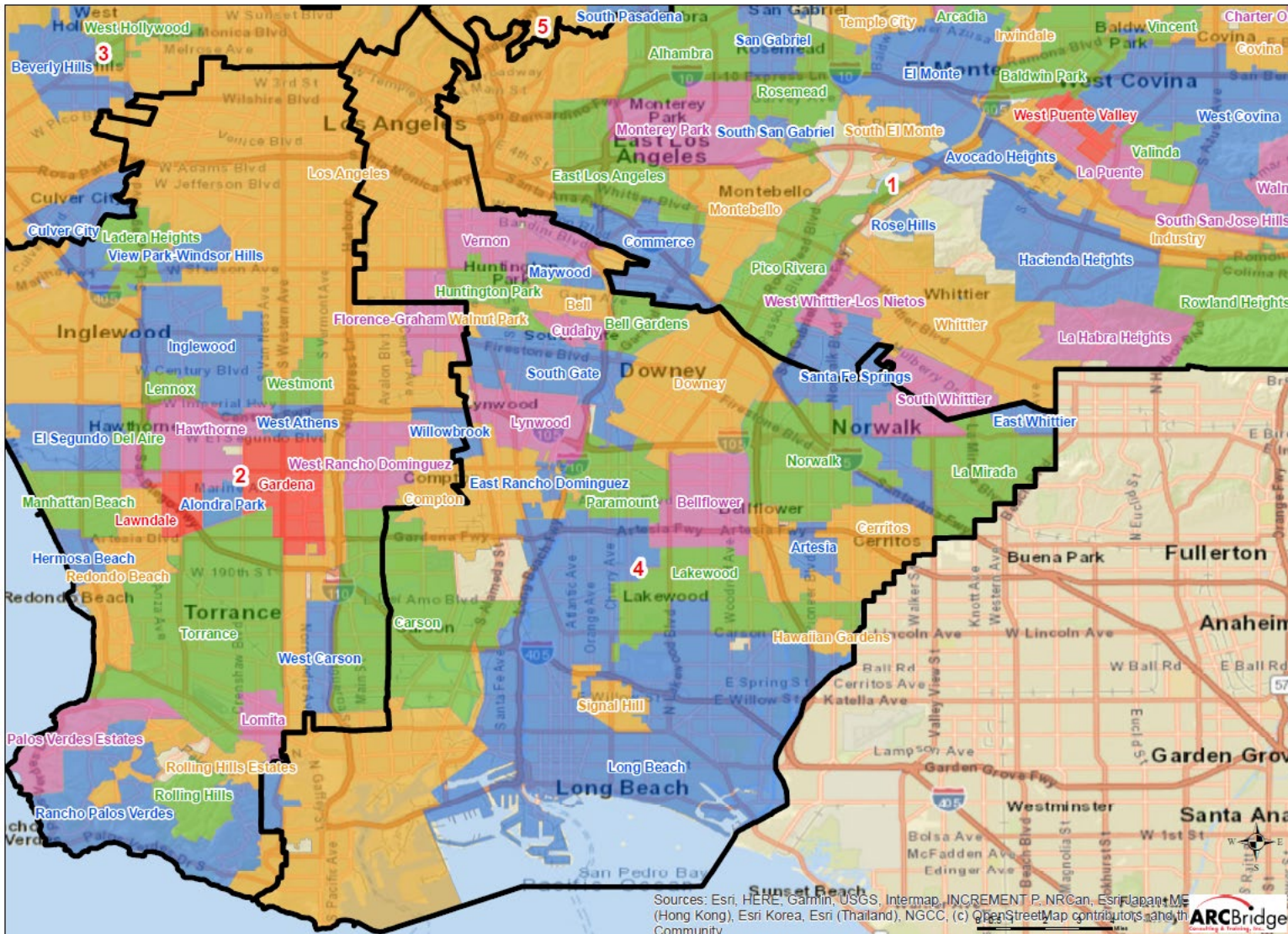
Name	Total Pop	Deviation	Deviation %
3	2,020,897	11,312	0.56%

Total Pop, VAP, CVAP



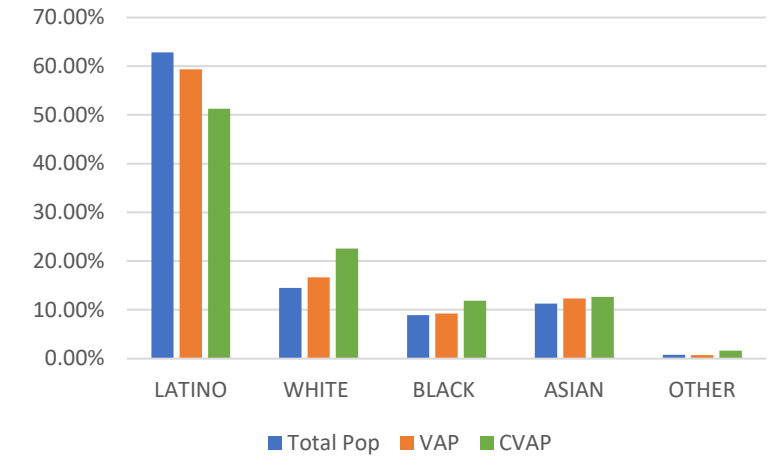
District 3	Total Pop	VAP	CVAP
LATINO	31.43%	28.98%	23.84%
WHITE	47.21%	49.49%	56.94%
BLACK	4.86%	4.96%	5.68%
ASIAN	13.71%	13.94%	12.35%
OTHER	1.41%	1.32%	1.19%

District 4



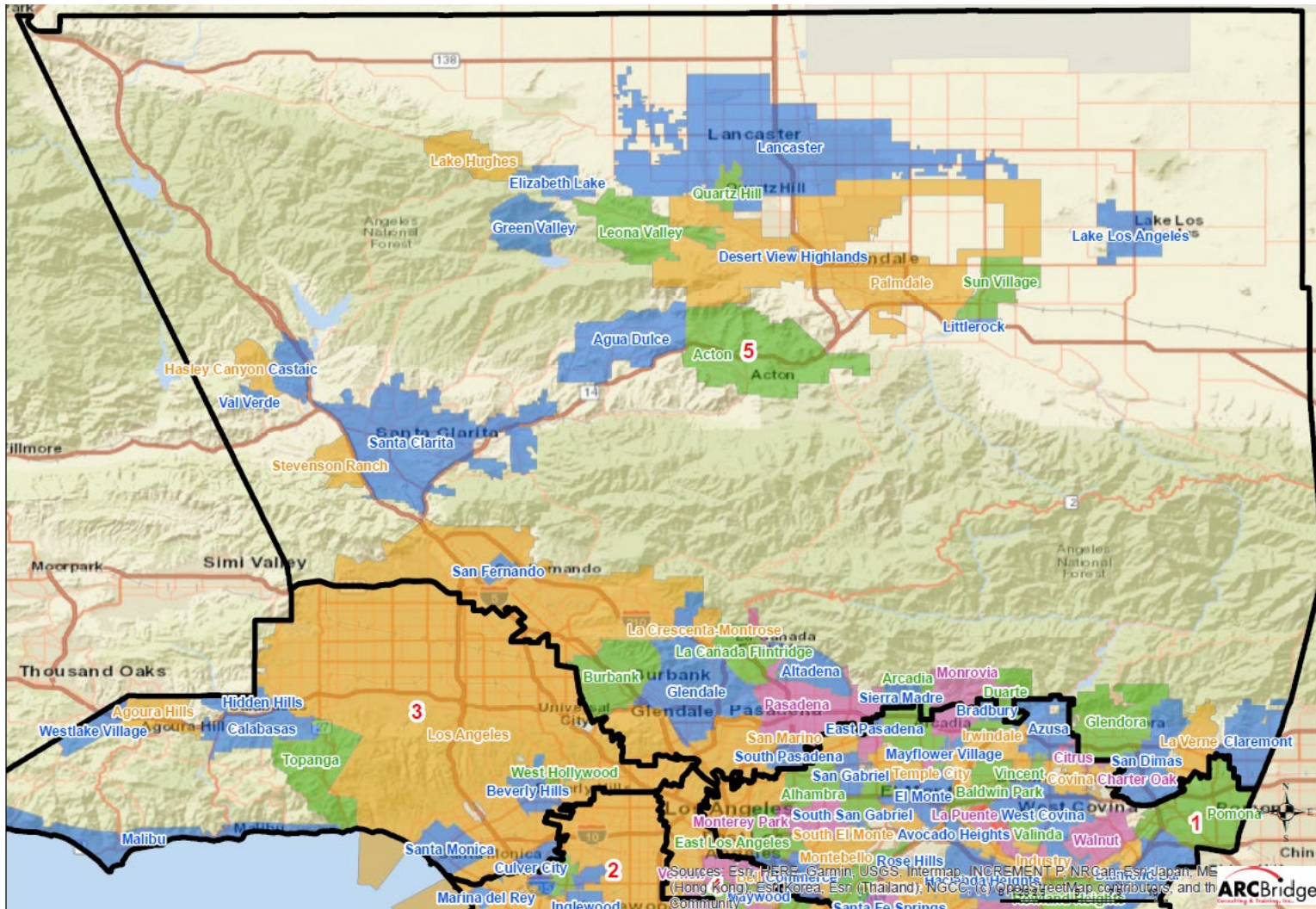
Name	Total Pop	Deviation	Deviation %
4	2,058,900	49,315	2.45%

Total Pop, VAP, CVAP



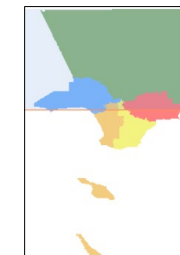
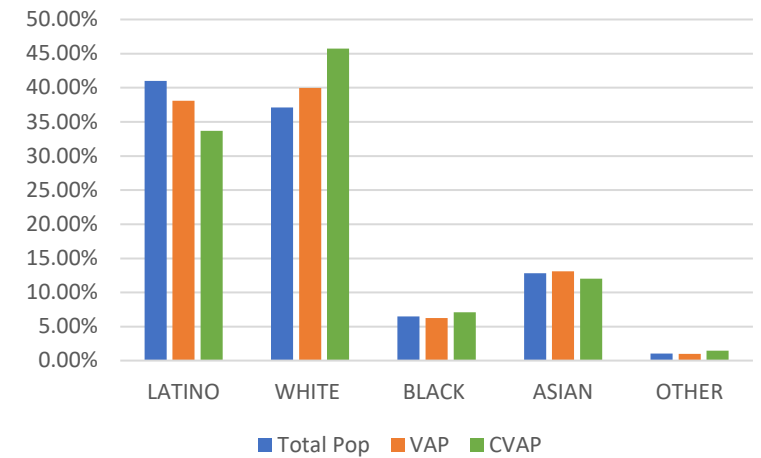
District 4	Total Pop	VAP	CVAP
LATINO	62.82%	59.33%	51.28%
WHITE	14.48%	16.66%	22.54%
BLACK	8.91%	9.25%	11.87%
ASIAN	11.29%	12.33%	12.67%
OTHER	0.78%	0.73%	1.65%

District 5



Name	Total Pop	Deviation	Deviation %
5	1,989,984	-19,601	-0.98%

Total Pop, VAP, CVAP



District 5	Total Pop	VAP	CVAP
LATINO	40.99%	38.11%	33.70%
WHITE	37.10%	39.99%	45.73%
BLACK	6.48%	6.27%	7.08%
ASIAN	12.81%	13.10%	12.01%
OTHER	1.04%	0.99%	1.48%