



# LOS ANGELES COUNTY **REDISTRICTING 2021**

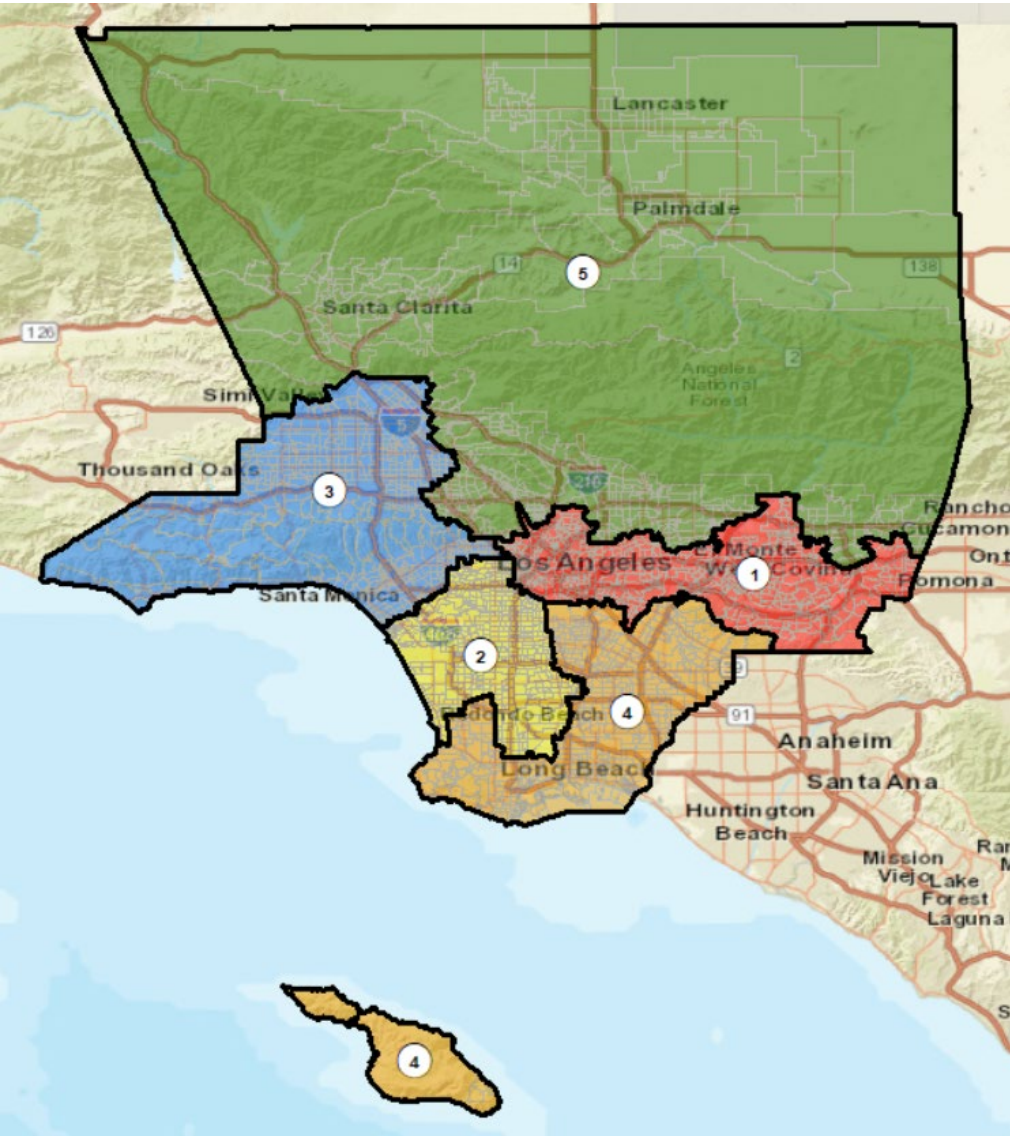
ANALYSIS OF Draft Plan  
Name: Final Map— 12-12-21

Presentation to the County of LOS ANGELES  
CITIZENS REDISTRICTING COMMISSION

ARCBridge Consulting & Training Inc.  
[www.arcbridge.com](http://www.arcbridge.com)



# Plan Name: Final Map as of 12-12-21

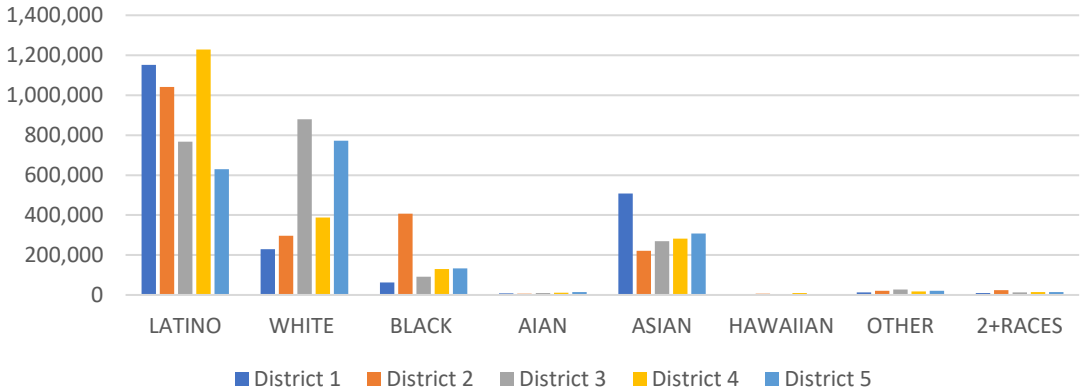


### Maximum Deviation 9.32%%

Name	Total Pop	Deviation	Deviation %
1	1,982,511	-27,074	-1.35%
2	2,023,783	14,198	0.71%
3	2,061,345	51,760	2.58%
4	2,083,832	74,247	3.69%
5	1,896,455	-113,130	-5.63%

District	Latino	%	White	%	Black	%	Asian	%
1	1,152,944	58.16%	228,659	11.53%	61,739	3.11%	507,251	25.59%
2	1,041,515	51.46%	297,216	14.69%	406,408	20.08%	220,839	10.91%
3	767,107	37.21%	880,436	42.71%	91,310	4.43%	269,638	13.08%
4	1,229,591	59.01%	387,665	18.60%	130,267	6.25%	282,497	13.56%
5	630,546	33.25%	771,965	40.71%	133,107	7.02%	307,867	16.23%

Ethnic and Racial Information by District



# CENSUS 2020 POPULATION AND CITIZEN VOTING AGE POPULATION

TOTAL POPULATION

	District 1	District 2	District 3	District 4	District 5
LATINO	1,152,944	1,041,515	767,107	1,229,591	630,546
LATINO %	58.16%	51.46%	37.21%	59.01%	33.25%
WHITE	228,659	297,216	880,436	387,665	771,965
WHITE%	11.53%	14.69%	42.71%	18.60%	40.71%
BLACK	61,739	406,408	91,310	130,267	133,107
BLACK %	3.11%	20.08%	4.43%	6.25%	7.02%
AIAN	7,347	7,019	9,879	10,974	14,040
AIAN %	0.37%	0.35%	0.48%	0.53%	0.74%
ASIAN	507,251	220,839	269,638	282,497	307,867
ASIAN %	25.59%	10.91%	13.08%	13.56%	16.23%
HAWAIIAN	2,390	6,935	3,049	10,281	2,984
HAWAIIAN %	0.12%	0.34%	0.15%	0.49%	0.16%
OTHER	12,368	20,278	26,969	17,879	20,965
OTHER %	0.62%	1.00%	1.31%	0.86%	1.11%
2+RACES	9,813	23,573	12,957	14,678	14,981
2+RACES%	0.49%	1.16%	0.63%	0.70%	0.79%
TOTAL	1,982,511	2,023,783	2,061,345	2,083,832	1,896,455

VOTING AGE POPULATION

District 1	District 2	District 3	District 4	District 5
872,887	756,496	580,012	910,896	459,404
54.80%	47.94%	34.39%	55.96%	30.45%
207,644	257,393	762,079	341,480	659,531
13.04%	16.31%	45.19%	20.98%	43.72%
53,778	330,667	76,717	102,912	102,306
3.38%	20.96%	4.55%	6.32%	6.78%
6,239	5,757	8,501	9,539	11,858
0.39%	0.36%	0.50%	0.59%	0.79%
434,264	189,241	226,881	231,666	246,591
27.26%	11.99%	13.45%	14.23%	16.35%
1,946	5,482	2,455	8,051	2,339
0.12%	0.35%	0.15%	0.49%	0.16%
9,015	14,958	20,587	13,139	16,010
0.57%	0.95%	1.22%	0.81%	1.06%
7,175	17,973	9,270	10,108	10,466
0.45%	1.14%	0.55%	0.62%	0.69%
1,592,948	1,577,967	1,686,502	1,627,791	1,508,505

CITIZEN VOTING AGE POPULATION

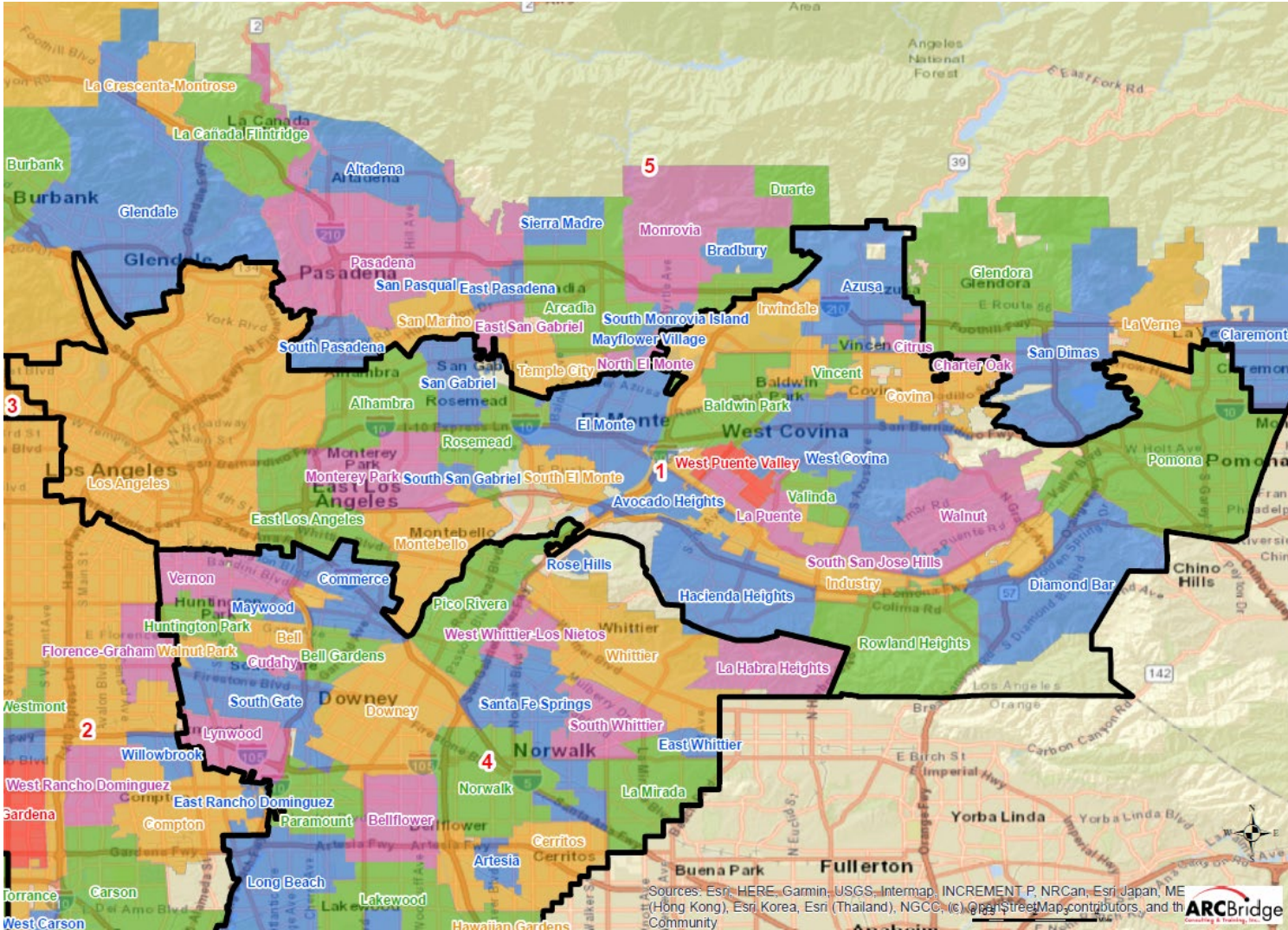
District 1	District 2	District 3	District 4	District 5
629,190	439,191	392,059	654,294	337,034
51.51%	37.97%	28.68%	50.01%	26.70%
202,334	234,808	719,057	356,596	630,885
16.57%	20.30%	52.60%	27.26%	49.99%
50,582	334,343	73,652	97,192	94,372
4.14%	28.91%	5.39%	7.43%	7.48%
N/A	N/A	N/A	N/A	N/A
N/A	N/A	N/A	N/A	N/A
325,630	129,375	166,447	179,550	180,767
26.66%	11.19%	12.18%	13.72%	14.32%
N/A	N/A	N/A	N/A	N/A
N/A	N/A	N/A	N/A	N/A
13,485	18,769	15,951	20,631	19,117
1.10%	1.62%	1.17%	1.58%	1.51%
N/A	N/A	N/A	N/A	N/A
N/A	N/A	N/A	N/A	N/A
1,207,882	1,126,185	1,378,999	1,321,142	1,281,272

## NUMBER OF SPLIT CITIES/CSAS, LA CITY NEIGHBORHOOD COUNCILS, COIS

Max Deviation	Number of Districts with Polsby Popper-Compactness Score of >.2	# Majority Minority Districts		Splits		Community of Interest Models (COI)		
		Based on Total Population	Based on CVAP	Consolidated Statistical Areas (CSAs) # CSAs	Neighborhood Councils	COI A	COI B	COI C
9.32	3	3	2	11	17	9	8	10

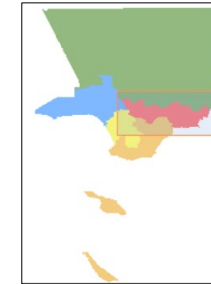
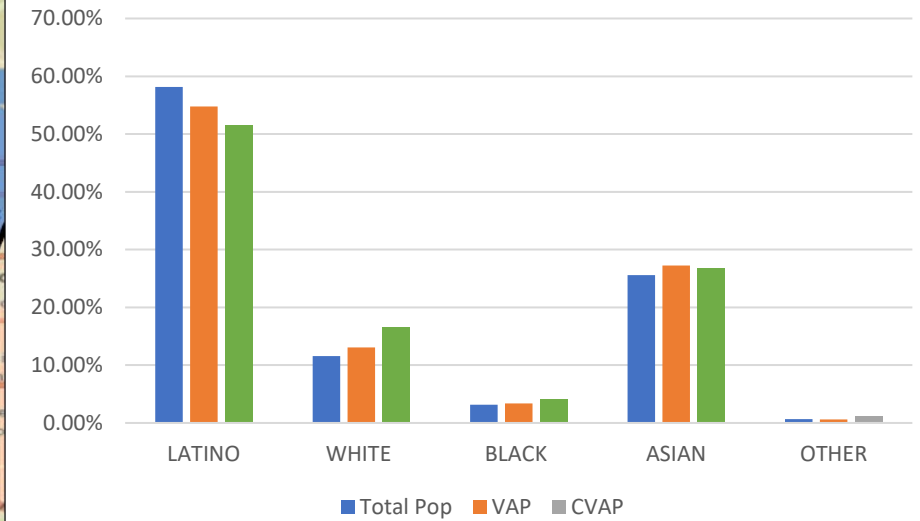


# District 1



Name	Total Pop	Deviation	Deviation %
1	1,982,511	-27,074	-1.35%

Total Pop, VAP, CVAP



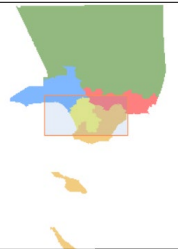
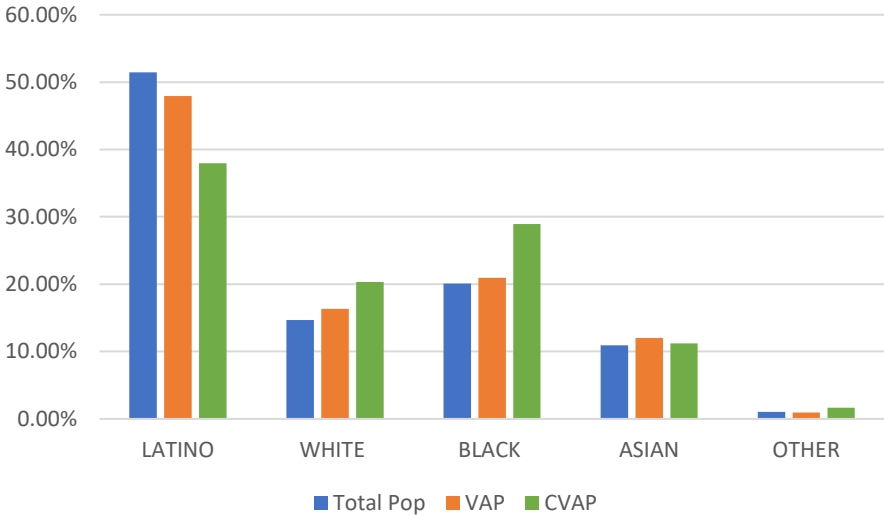
District 1	Total Pop	VAP	CVAP
LATINO	58.16%	54.80%	51.51%
WHITE	11.53%	13.04%	16.57%
BLACK	3.11%	3.38%	4.14%
ASIAN	25.59%	27.26%	26.66%
OTHER	0.62%	0.57%	1.10%



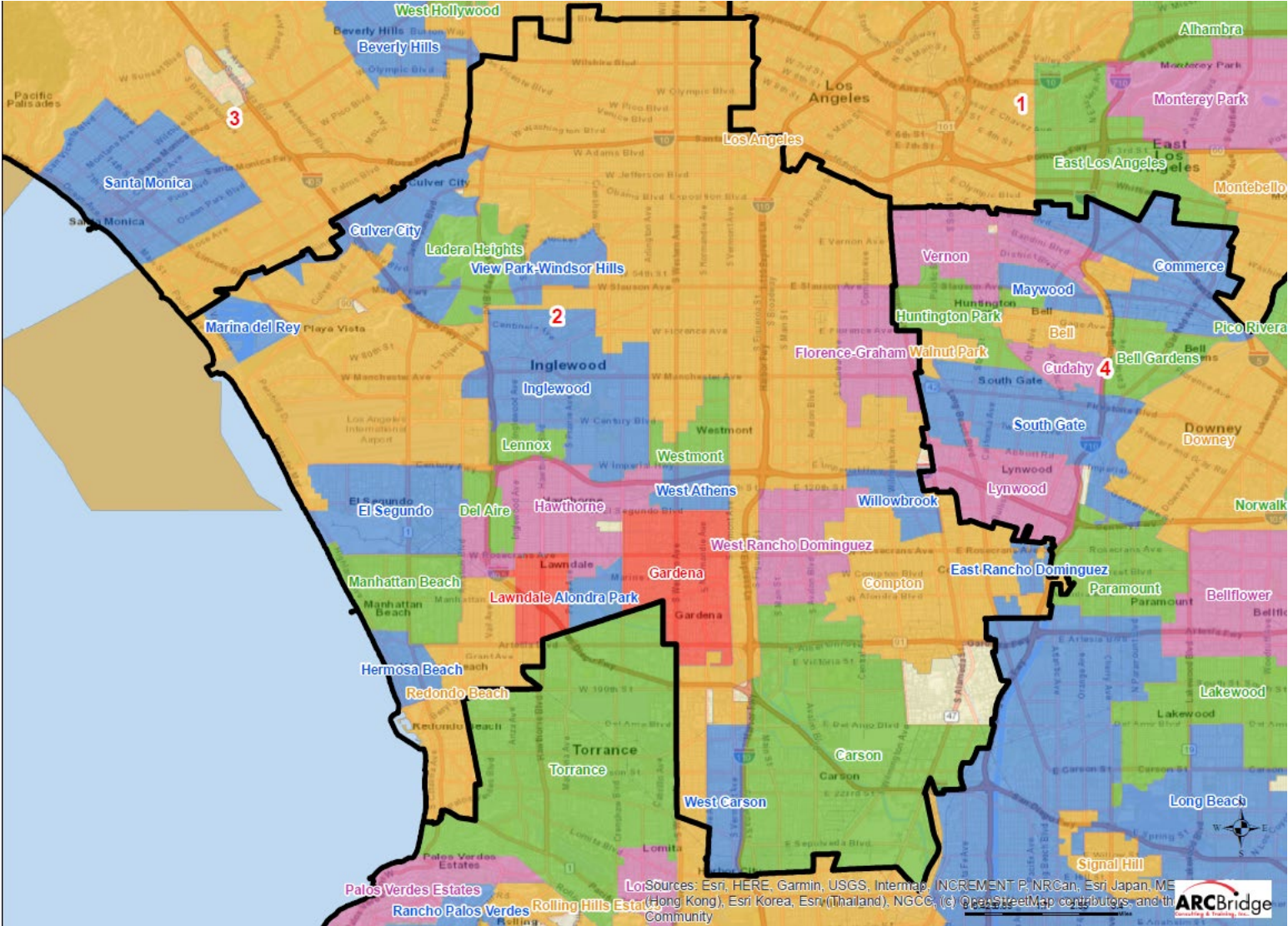
# District 2

Name	Total Pop	Deviation	Deviation %
2	2,023,783	14,198	0.71%

Total Pop, VAP, CVAP

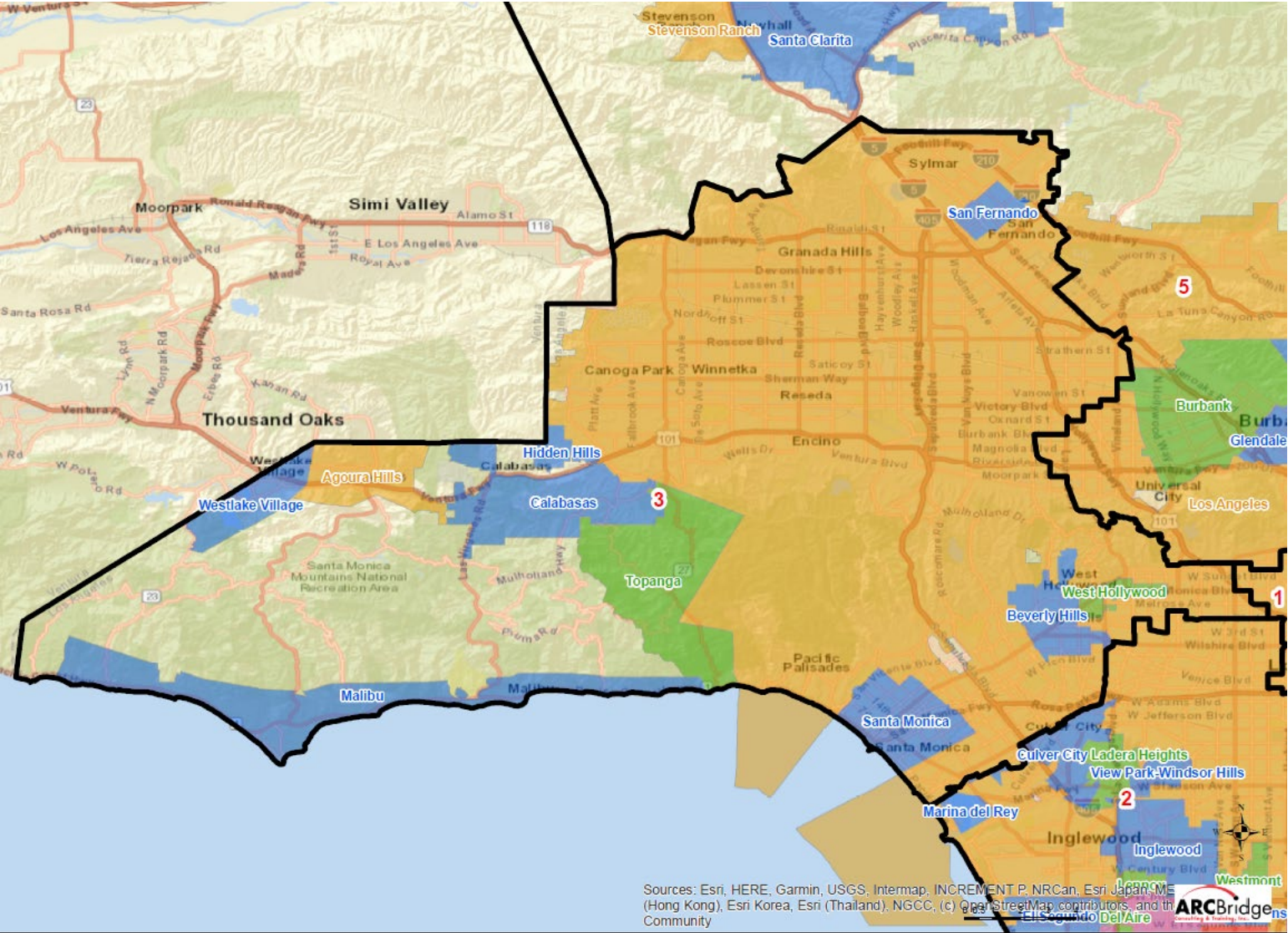


District 2	Total Pop	VAP	CVAP
LATINO	51.46%	47.94%	37.97%
WHITE	14.69%	16.31%	20.30%
BLACK	20.08%	20.96%	28.91%
ASIAN	10.91%	11.99%	11.19%
OTHER	1.00%	0.95%	1.62%



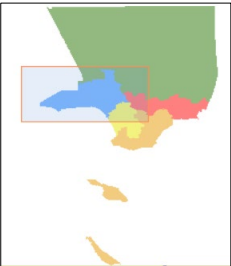
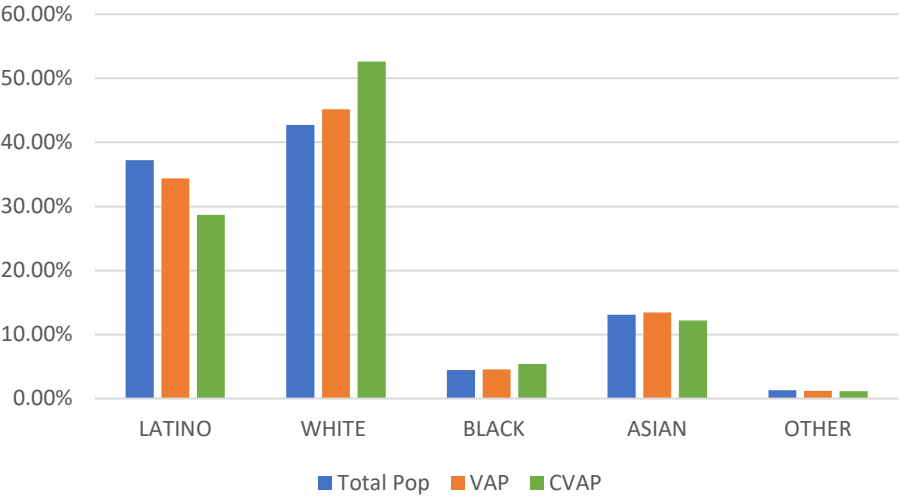


# District 3



Name	Total Pop	Deviation	Deviation %
3	2,061,345	51,760	2.58%

Total Pop, VAP, CVAP

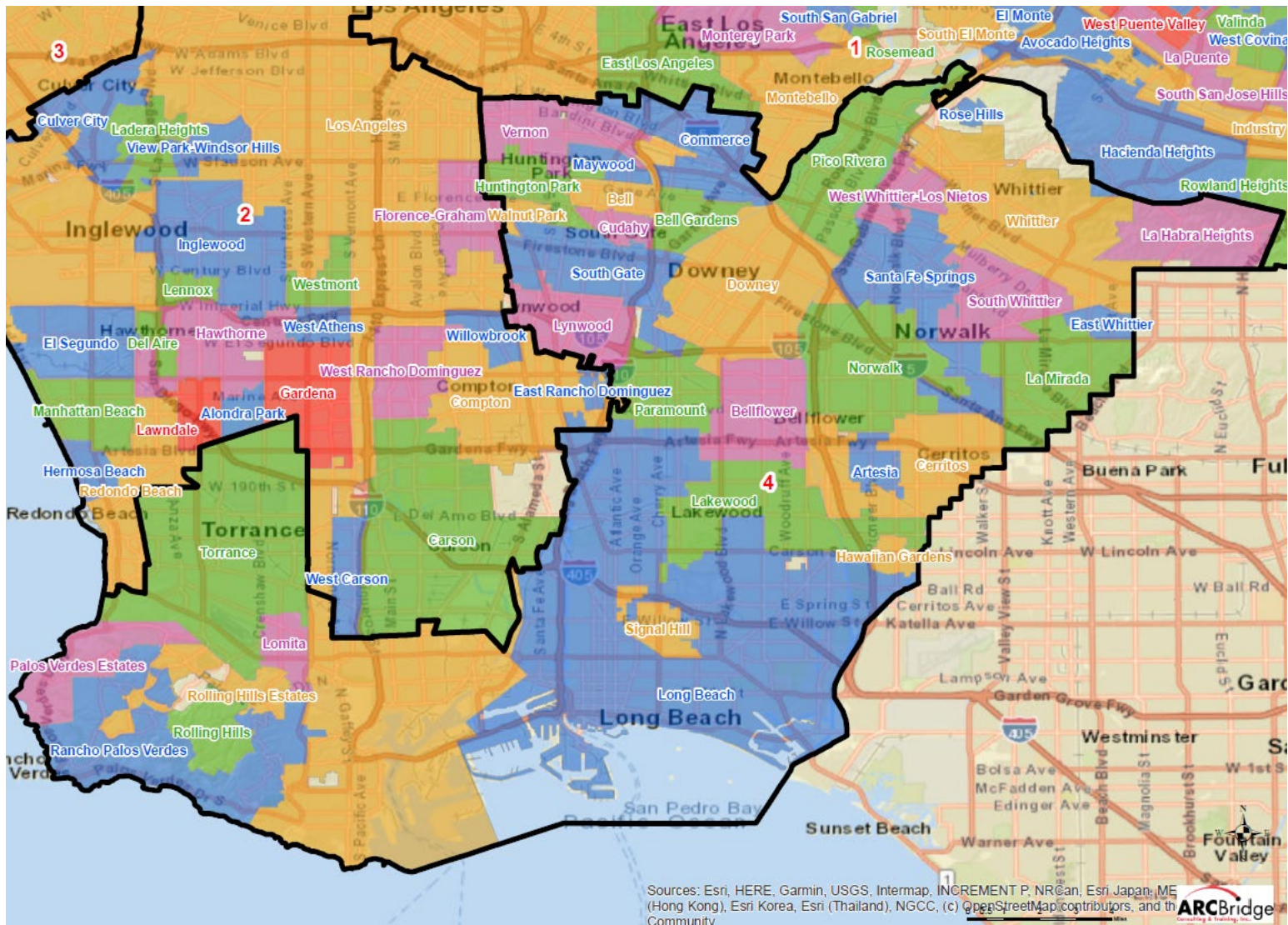


District 3	Total Pop	VAP	CVAP
LATINO	37.21%	34.39%	28.68%
WHITE	42.71%	45.19%	52.60%
BLACK	4.43%	4.55%	5.39%
ASIAN	13.08%	13.45%	12.18%
OTHER	1.31%	1.22%	1.17%

Sources: Esri, HERE, Garmin, USGS, Intermap, INCREMENT P, NRCan, Esri Japan, METI, Esri Korea, Esri (Thailand), NGCC, (c) OpenStreetMap contributors, and the Community

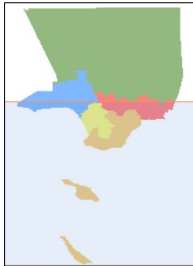
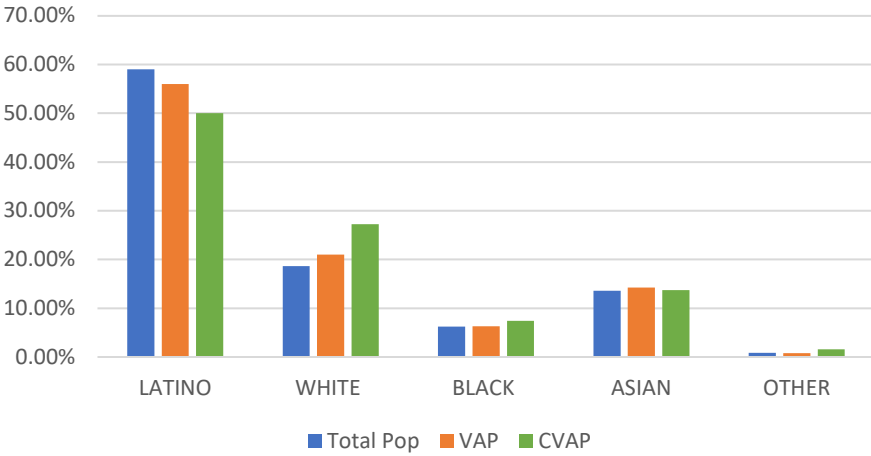


# District 4



Name	Total Pop	Deviation	Deviation %
4	2,083,832	74,247	3.69%

Total Pop, VAP, CVAP

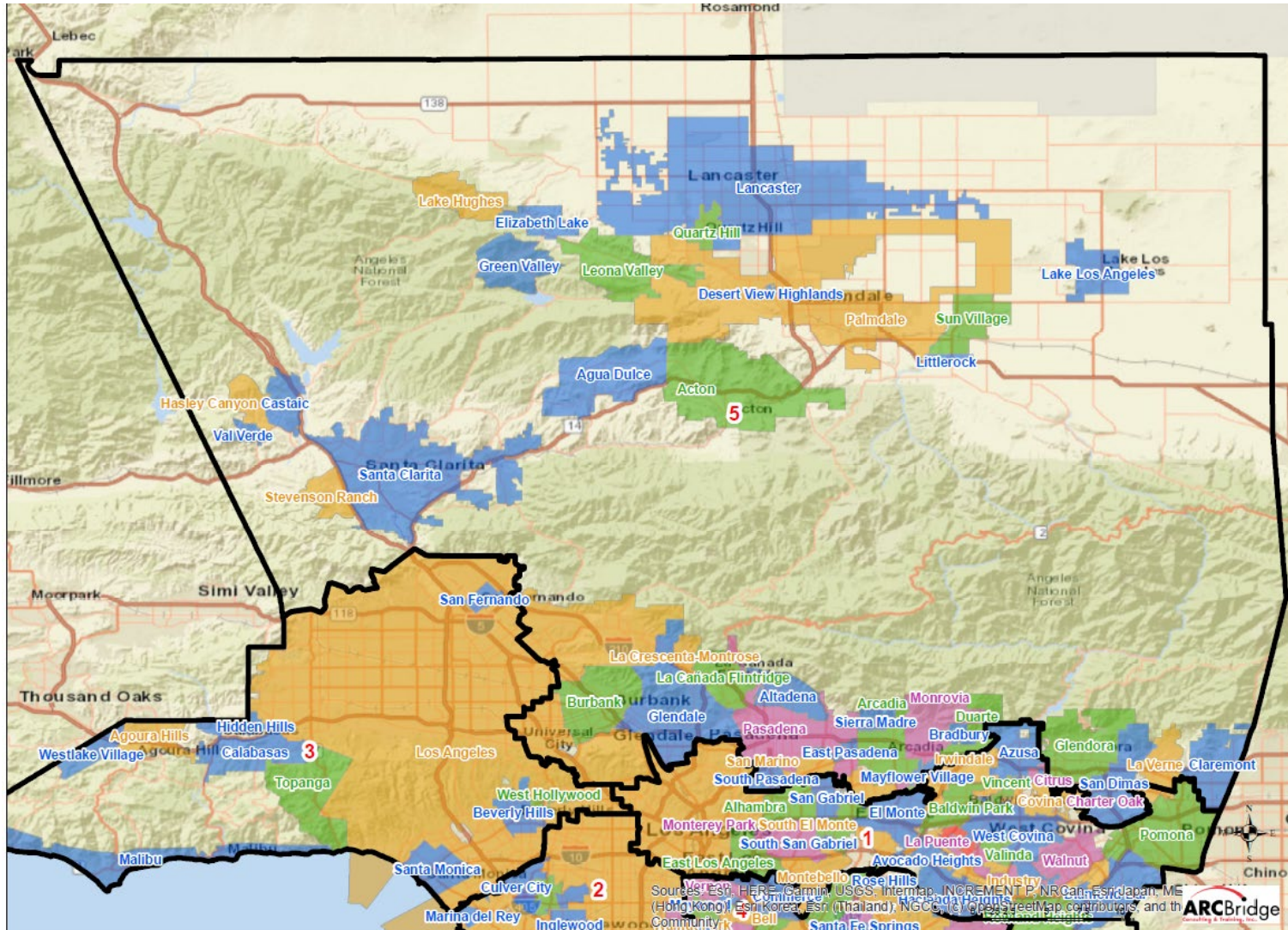


District 4	Total Pop	VAP	CVAP
LATINO	59.01%	55.96%	50.01%
WHITE	18.60%	20.98%	27.26%
BLACK	6.25%	6.32%	7.43%
ASIAN	13.56%	14.23%	13.72%
OTHER	0.86%	0.81%	1.58%

Sources: Esri, HERE, Garmin, USGS, Intermap, INCREMENT P, NRCan, Esri Japan, ME (Hong Kong), Esri Korea, Esri (Thailand), NGCC, (c) OpenStreetMap contributors, and the Community

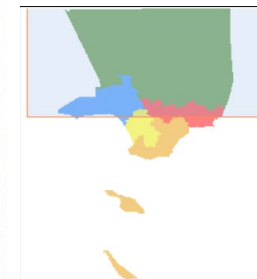
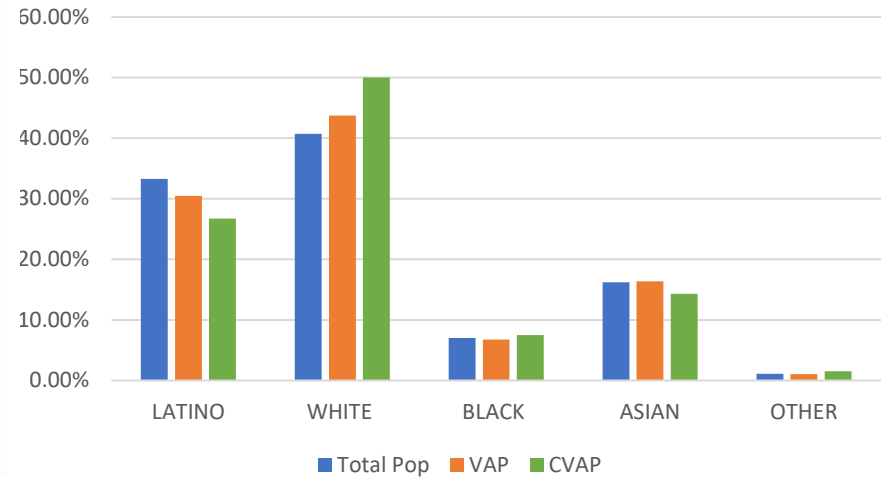


# District 5



Name	Total Pop	Deviation	Deviation %
5	1,896,455	-113,130	-5.63%

Total Pop, VAP, CVAP



District 5	Total Pop	VAP	CVAP
LATINO	33.25%	30.45%	26.70%
WHITE	40.71%	43.72%	49.99%
BLACK	7.02%	6.78%	7.48%
ASIAN	16.23%	16.35%	14.32%
OTHER	1.11%	1.06%	1.51%