

Citizens Redistricting Commission (CRC)

**Comisión de Redelimitación de Distritos (CRC)
de ciudadanos del condado de los Ángeles**

LIVE STREAM WILL BEGIN SHORTLY

<https://www.youtube.com/LACountyRedistricting/>



LOS ANGELES COUNTY
REDISTRICTING
2021





LOS ANGELES COUNTY
REDISTRICTING 2021

Los Angeles County Citizens Redistricting Commission (CRC) Comisión de Redelimitación de Distritos (CRC) de ciudadanos del condado de los Ángeles

**Special Meeting
December 10, 2021
10 de diciembre de 2021**





1. Call to Order

ATTENTION ALL PARTICIPANTS

You must select your preferred language!

1. Click on “**Interpretation**” at the bottom of your screen
 2. Select English or Spanish
- You then can choose to mute the original audio for a clearer interpretation.

ATENCION TODOS LOS PARTICIPANTES

Debe elegir el idioma que prefiere!

1. Haga clic en la “**Interpretación**” abajo en su pantalla a mano derecha
 2. Elija Inglés o Español
- Luego, puede optar por "silenciar el audio original" para escuchar una interpretación más clara.



IF YOU DO NOT CHOOSE A LANGUAGE, YOU WILL NOT HEAR THE INTERPRETATION.
SÍ USTED NO SELECCIONA UN IDIOMA, NO PODRÁ ESCUCHAR LA INTERPRETACIÓN.

Notice



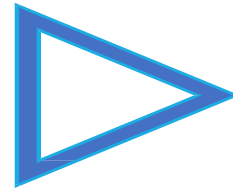
LOS ANGELES COUNTY
REDISTRICTING 2021

This meeting is streaming live at:

<https://www.youtube.com/LACountyRedistricting/>

This meeting is being recorded and will be posted on LA County CRC website:

<https://redistricting.lacounty.gov>



**Deseamos recordarle al público que esta audiencia pública
se está grabando y transmitiendo en directo en**

<https://www.youtube.com/LACountyRedistricting>

**El enlace de la grabación también se publicará y podrán acceder a ella a través del sitio
web del Condado de Los Ángeles**

<https://redistricting.lacounty.gov>





Notice

**During the CRC meeting, if you need technical assistance,
use the Q&A button at the bottom of your Zoom Webinar screen.
We can then assist you.**

**Si en algún momento los miembros del público tienen alguna dificultad técnica,
por favor envíenme un mensaje en QA,
y haremos todo lo posible por solucionar el problema.**



2. Roll Call

Ahora pasaré lista. Les recuerdo que los nombres de los comisionados se llamarán en orden alfabético rotativo según su apellido. Comisionados, estén preparados para desenmudecer su micrófono y responder cuando llame su nombre.

1. Commissioner Jean Franklin
2. Commissioner David Holtzman
3. Commissioner Mary Kenney
4. Co-Chair Daniel Mayeda
5. Commissioner Mark Mendoza
6. Commissioner Apolonio Morales
7. Commissioner Nelson Obregon
8. Commissioner Priscilla Orpinela-Segura
9. Commissioner Hailes Soto
10. Commissioner Saira Soto
11. Commissioner Brian Stecher
12. Commissioner John Vento
13. Co-Chair Carolyn Williams
14. Commissioner Doreena Wong

1. Comisionada Jean Franklin
2. Comisionado David Holtzman
3. Comisionada Mary Kenney
4. Codirector Daniel Mayeda
5. Comisionado Mark Mendoza
6. Comisionado Apolonio Morales
7. Comisionado Nelson Obregon
8. Comisionada Priscilla Orpinela-Segura
9. Comisionado Hailes Soto
10. Comisionada Saira Soto
11. Comisionado Brian Stecher
12. Comisionado John Vento
13. Codirectora Carolyn Williams
14. Comisionada Doreena Wong





How to Make a Public Comment

Type your name, affiliation/organization, and Agenda Item # into QA by 8:00 p.m.
if you want to make an oral Public Comment.

If on a phone line, press *9 to raise your hand. Once called upon, press *6 to unmute and speak.

- Each Person Gets 1 Minute unless the Co-Chairs determine otherwise.
 - 2 minutes for Spanish interpretation
- Each person only gets 1 opportunity to speak.
- When you speak, share your name and affiliation at the beginning.
- Cada persona tendrá la oportunidad de hablar por 1 minuto.
 - 2 minutos para español interpretación
- Cada persona solo tiene 1 oportunidad para hablar.
- Cuando comience a hacer su comentario, por favor comparta su nombre y cualquier afiliación que tenga.

The public can also submit written comments
on Agenda items at:

<https://publiccomment.redistricting.lacounty.gov/>

Si no quiere hablar pero quiere hacer un
comentario público por escrito, use este enlace:

<https://publiccomment.redistricting.lacounty.gov/>

Do not type written comments into QA.

They will not be captured as official submitted written comments.





How to Submit Written Public Comments

The public can submit written comments on Agenda items at:

<https://publiccomment.redistricting.lacounty.gov/>

Si no quiere hablar pero quiere hacer un comentario público por escrito, use este enlace:

<https://publiccomment.redistricting.lacounty.gov/>

LOS ANGELES COUNTY REDISTRICTING 2021 PUBLIC COMMENT

Meeting Date: 11/10/2021

First Name* MI Last Name*

Email Phone

Address City State Zip Code

Name of Organization Represented

Attach Word, Excel, or PDF supporting document(s). (5 attachments limit)

Agenda Items

Agenda	Title
<input type="checkbox"/>	4. General Public Comment
<input type="checkbox"/>	6.a. Racially Polarized Voting Analysis Report on Current 4 Map Options
<input type="checkbox"/>	6.b. Review and Discussion of public input on map options and submitted maps, including Commissioners' observations and suggested modifications, and possible direction to ARCBridge to prepare modified or new maps for future consideration
<input type="checkbox"/>	OPTION A Draft Map Chosen By Commissioners for Further Public Input and Discussion - Option A





3. Approval of Agenda – Co-Chair Carolyn Williams





5. Consent Items – Approval of Minutes – Co-Chair Daniel Mayeda

- a. Review and take appropriate action on the Draft Minutes:
- December 1, 2021
 - December 5, 2021
 - December 7, 2021



Citizens Redistricting Commission (CRC) Meeting

CRC Executive Closed Session on Agenda Item No. 5
Public meeting will resume when the closed session concludes.

How to Make a Public Comment

To submit written comments on Agenda items, complete formt:
<https://publiccomment.redistricting.lacounty.gov/>

Note: Submitting written comments does not mean
you have signed up to make an oral public comment as well.
To make oral comments, type your name, affiliation/organization,
and Agenda Item # into QA.

Do not type written comments into QA.
Such text will not be captured as official submitted written comments.



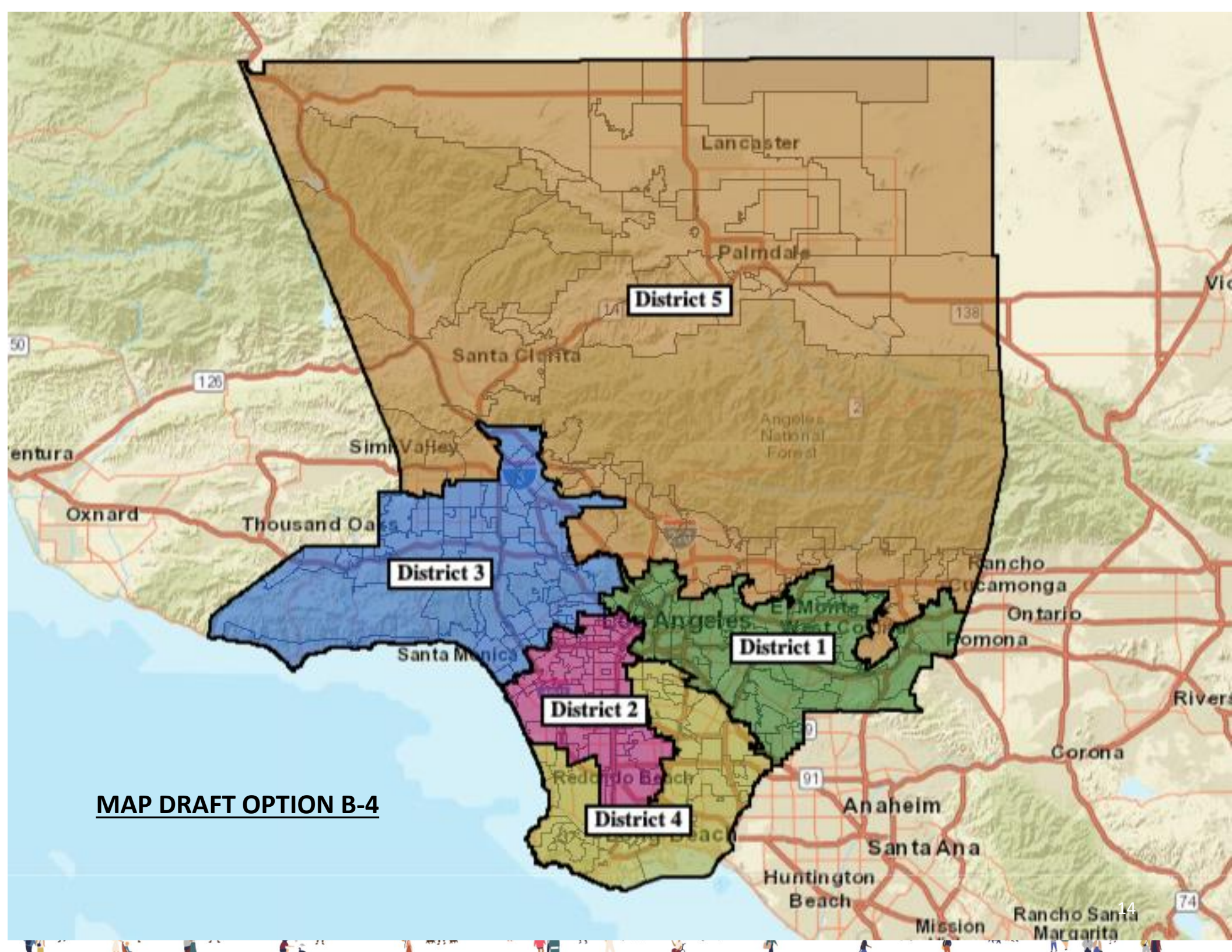
6. Action/ Discussion Items

6a. Discussion and Potential Approval of Final Map — Co-Chairs Carolyn Williams and Dan Mayeda

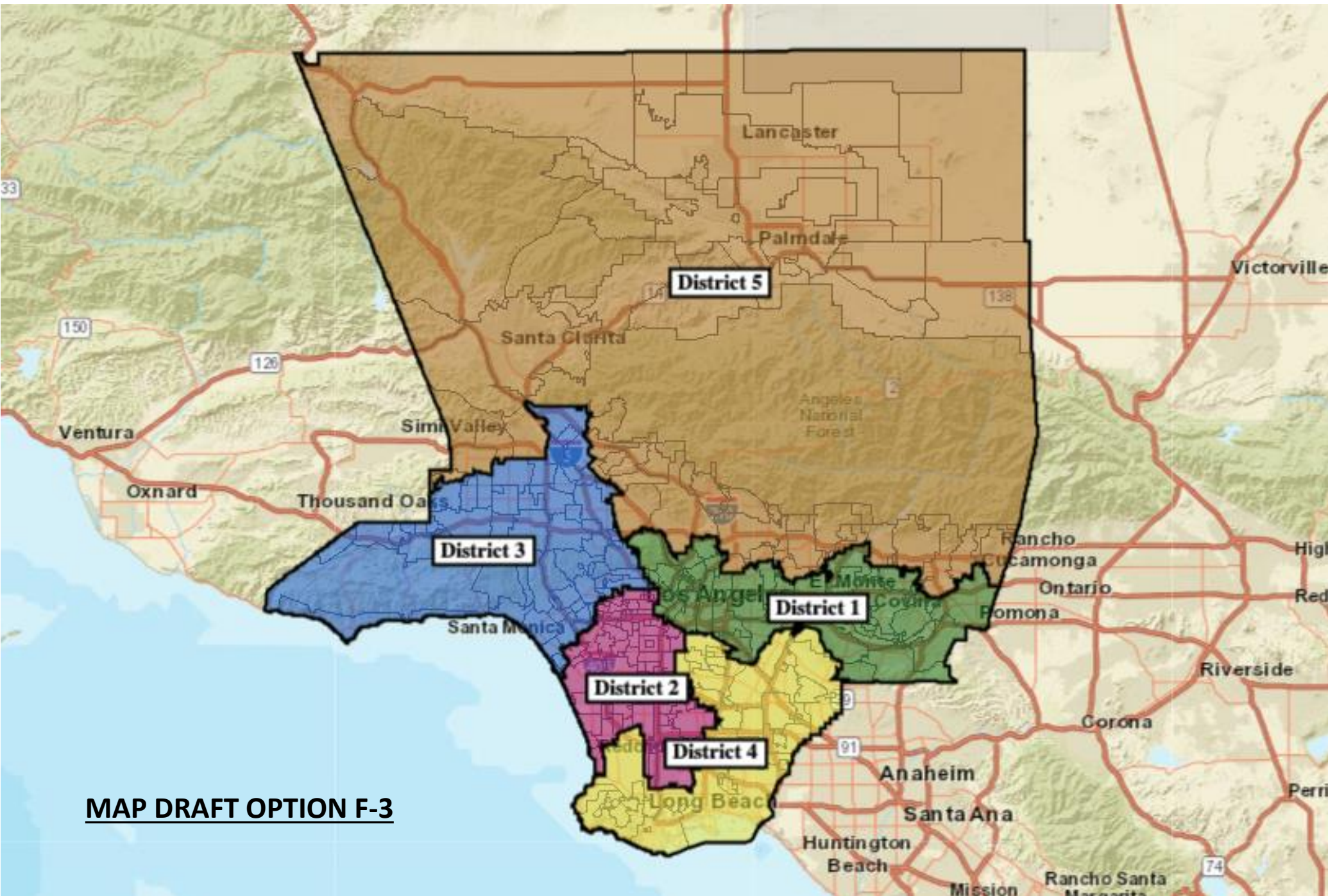
6b. Discussion and Direction Regarding Draft Final Report — Co-Chairs Carolyn Williams and Dan Mayeda

6c. Review of form resolutions for map adoption and final report (informational only – no action) – Holly Whatley, Independent Legal Counsel -- Continued





MAP DRAFT OPTION B-4



MAP DRAFT OPTION F-3





Map differences between Map B-4 and Map F-3



Map differences sorted by SD with Map B-4 as the base map.

CITY_TYPE	LCITY	COMMUNITY	LABEL	Plan B4	Plan F3
City	La Mirada		City of La Mirada	1	4
City	Pico Rivera		City of Pico Rivera	1	4
City	Santa Fe Springs		City of Santa Fe Springs	1	4
Unincorporated	Unincorporated	Covina (Charter Oak)	Unincorporated - Covina (Charter Oak)	1	1 and 5
Unincorporated	Unincorporated	East La Mirada	Unincorporated - East La Mirada	1	4
Unincorporated	Unincorporated	East Whittier	Unincorporated - East Whittier	1	4
Unincorporated	Unincorporated	Northeast San Gabriel	Unincorporated - Northeast San Gabriel	1	1 and 5
Unincorporated	Unincorporated	South Whittier	Unincorporated - South Whittier	1	4
Unincorporated	Unincorporated	Sunrise Village	Unincorporated - Sunrise Village	1	4
Unincorporated	Unincorporated	West Whittier/Los Nieto	Unincorporated - West Whittier/Los Nieto	1	4
Unincorporated	Unincorporated	Whittier	Unincorporated - Whittier	1	4
City	Whittier		City of Whittier	1	1 and 5
City	Los Angeles	Angelino Heights	Los Angeles - Angelino Heights	2	1
City	Los Angeles	Chinatown	Los Angeles - Chinatown	2	1
City	Los Angeles	Downtown	Los Angeles - Downtown	2	1
City	Los Angeles	Historic Filipinotown	Los Angeles - Historic Filipinotown	2	1
City	Los Angeles	Little Tokyo	Los Angeles - Little Tokyo	2	1
City	Los Angeles	Marina Peninsula	Los Angeles - Marina Peninsula	2	3
City	Los Angeles	Palms	Los Angeles - Palms	2	3
City	Los Angeles	Pico-Union	Los Angeles - Pico-Union	2	1
City	Los Angeles	Playa Del Rey	Los Angeles - Playa Del Rey	2	3
City	Los Angeles	Temple-Beaudry	Los Angeles - Temple-Beaudry	2	1
City	Los Angeles	Westlake	Los Angeles - Westlake	2	1
Unincorporated	Unincorporated	Marina del Rey	Unincorporated - Marina del Rey	2	3
City	Los Angeles	Los Feliz	Los Angeles - Los Feliz	3	1
City	Los Angeles	Miracle Mile	Los Angeles - Miracle Mile	3	2
City	Los Angeles	Park La Brea	Los Angeles - Park La Brea	3	2
City	Los Angeles	Sun Valley	Los Angeles - Sun Valley	3	3 and 5
City	Los Angeles	West Hills	Los Angeles - West Hills	3	3 and 5
Unincorporated	Unincorporated	Lake Manor	Unincorporated - Lake Manor	3	5
Unincorporated	Unincorporated	West Chatsworth	Unincorporated - West Chatsworth	3	5
City	Hermosa Beach		City of Hermosa Beach	4	2
City	Los Angeles	Vernon Central	Los Angeles - Vernon Central	4	2
City	Manhattan Beach		City of Manhattan Beach	4	2
City	Redondo Beach		City of Redondo Beach	4	2
City	Walnut		City of Walnut	5	1
Unincorporated	Unincorporated	Covina	Unincorporated - Covina	1 and 5	1



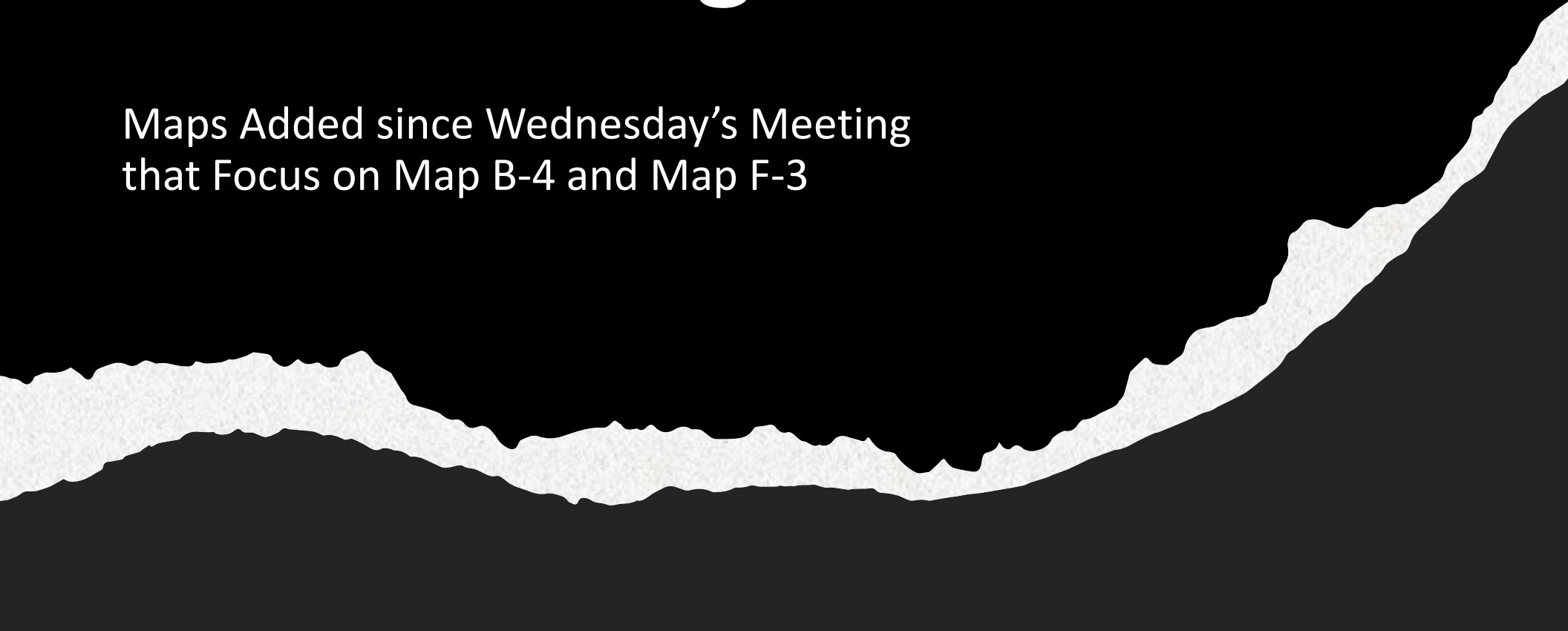
Map differences sorted by SD with Map F-3 as the base map.

CITY_TYPE	LCITY	COMMUNITY	LABEL	Plan F3	Plan B4
City	Los Angeles	Angelino Heights	Los Angeles - Angelino Heights	1	2
City	Los Angeles	Chinatown	Los Angeles - Chinatown	1	2
City	Los Angeles	Downtown	Los Angeles - Downtown	1	2
City	Los Angeles	Historic Filipinotown	Los Angeles - Historic Filipinotown	1	2
City	Los Angeles	Little Tokyo	Los Angeles - Little Tokyo	1	2
City	Los Angeles	Los Feliz	Los Angeles - Los Feliz	1	3
City	Los Angeles	Pico-Union	Los Angeles - Pico-Union	1	2
City	Los Angeles	Temple-Beaudry	Los Angeles - Temple-Beaudry	1	2
City	Los Angeles	Westlake	Los Angeles - Westlake	1	2
Unincorporated	Unincorporated	Covina	Unincorporated - Covina	1	1 and 5
City	Walnut		City of Walnut	1	5
City	Hermosa Beach		City of Hermosa Beach	2	4
City	Los Angeles	Miracle Mile	Los Angeles - Miracle Mile	2	3
City	Los Angeles	Park La Brea	Los Angeles - Park La Brea	2	3
City	Los Angeles	Vernon Central	Los Angeles - Vernon Central	2	4
City	Manhattan Beach		City of Manhattan Beach	2	4
City	Redondo Beach		City of Redondo Beach	2	4
City	Los Angeles	Marina Peninsula	Los Angeles - Marina Peninsula	3	2
City	Los Angeles	Palms	Los Angeles - Palms	3	2
City	Los Angeles	Playa Del Rey	Los Angeles - Playa Del Rey	3	2
Unincorporated	Unincorporated	Marina del Rey	Unincorporated - Marina del Rey	3	2
City	La Mirada		City of La Mirada	4	1
City	Pico Rivera		City of Pico Rivera	4	1
City	Santa Fe Springs		City of Santa Fe Springs	4	1
Unincorporated	Unincorporated	East La Mirada	Unincorporated - East La Mirada	4	1
Unincorporated	Unincorporated	East Whittier	Unincorporated - East Whittier	4	1
Unincorporated	Unincorporated	South Whittier	Unincorporated - South Whittier	4	1
Unincorporated	Unincorporated	Sunrise Village	Unincorporated - Sunrise Village	4	1
Unincorporated	Unincorporated	West Whittier/Los Nieto	Unincorporated - West Whittier/Los Nieto	4	1
Unincorporated	Unincorporated	Whittier	Unincorporated - Whittier	4	1
Unincorporated	Unincorporated	Lake Manor	Unincorporated - Lake Manor	5	3
Unincorporated	Unincorporated	West Chatsworth	Unincorporated - West Chatsworth	5	3
Unincorporated	Unincorporated	Covina (Charter Oak)	Unincorporated - Covina (Charter Oak)	1 and 5	1
Unincorporated	Unincorporated	Northeast San Gabriel	Unincorporated - Northeast San Gabriel	1 and 5	1
City	Whittier		City of Whittier	1 and 5	1
City	Los Angeles	Sun Valley	Los Angeles - Sun Valley	3 and 5	3
City	Los Angeles	West Hills	Los Angeles - West Hills	3 and 5	3



100 Maps Submitted as of this Morning

Maps Added since Wednesday's Meeting
that Focus on Map B-4 and Map F-3



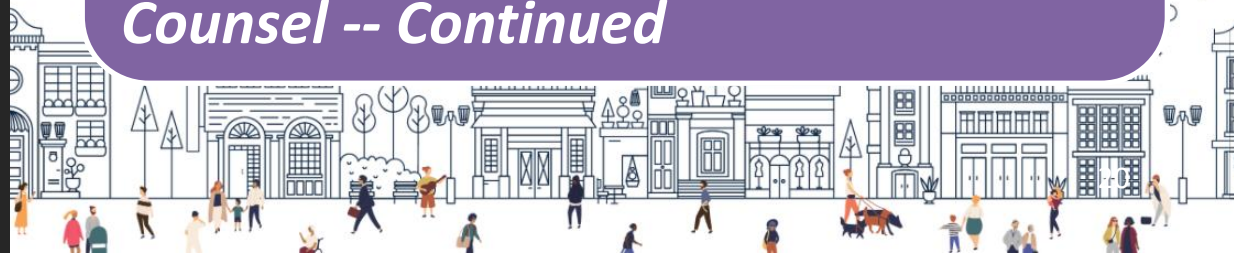


6. Action/ Discussion Items

6a. Discussion and Potential Approval of Final Map — Co-Chairs Carolyn Williams and Dan Mayeda

6b. Discussion and Direction Regarding Draft Final Report — Co-Chairs Carolyn Williams and Dan Mayeda

6c. Review of form resolutions for map adoption and final report (informational only – no action) – Holly Whatley, Independent Legal Counsel -- Continued



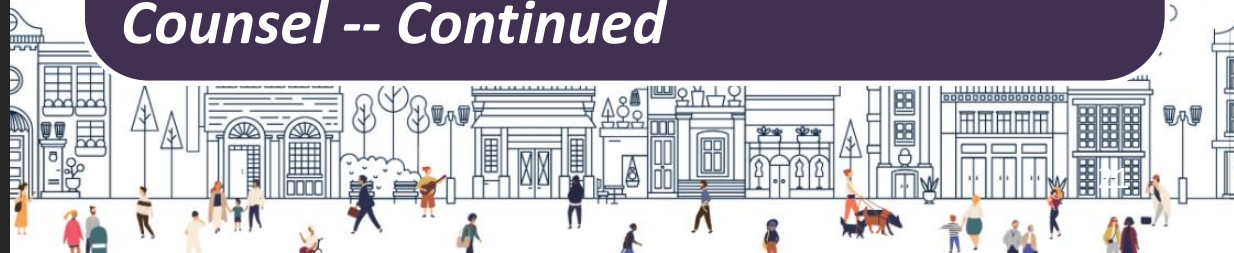


6. Action/ Discussion Items

6a. Discussion and Potential Approval of Final Map — Co-Chairs Carolyn Williams and Dan Mayeda

6b. Discussion and Direction Regarding Draft Final Report — Co-Chairs Carolyn Williams and Dan Mayeda

6c. Review of form resolutions for map adoption and final report (informational only – no action) – Holly Whatley, Independent Legal Counsel -- Continued

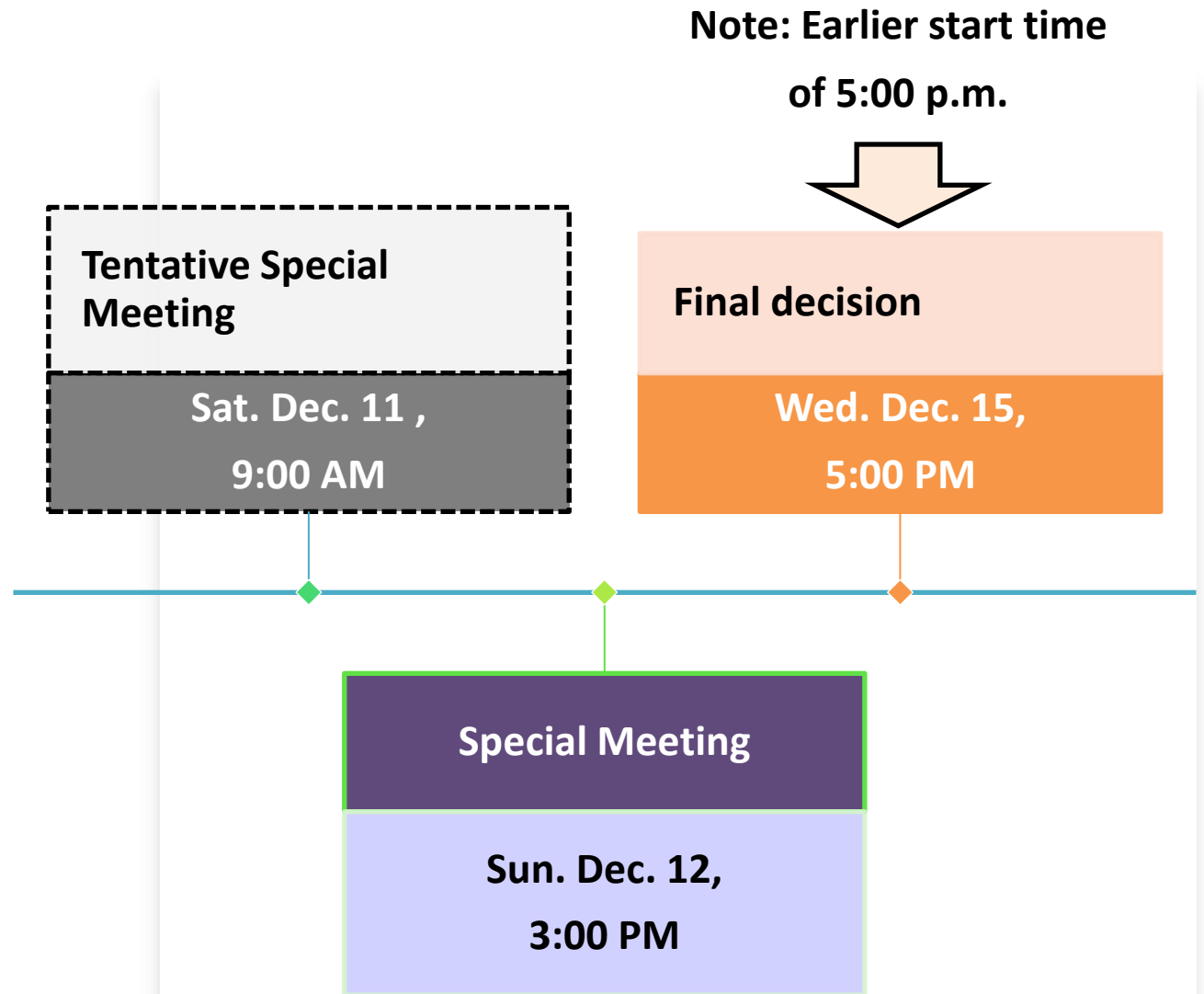




7. Executive Director Report



Meeting Schedule



Adjournment

Co-Chair Daniel Mayeda



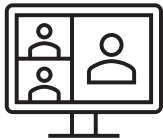
To learn about the LA County CRC, sign up at:
<https://redistricting.lacounty.gov/>



Sign up and stay informed: <https://redistricting.lacounty.gov>



Meetings will be virtual until further notice. If we offer hybrid formats in the future, attendance in person in keeping with COVID-19 health safety protocols – **masks required**



Attend and participate virtually in CRC meetings and public hearings:
<https://us02web.zoom.us/j/82726060927>



Listen only to CRC meetings and public hearings by calling:
(669) 900-9128, enter: 827 2606 0927#



View CRC meetings and public hearings on YouTube:
<https://www.youtube.com/LACountyRedistricting/>



Submit written comments via:
<https://publiccomment.redistricting.lacounty.gov/>
By mail: Los Angeles County CRC, P.O. Box 56447, Sherman Oaks, CA 91413



LA County CRC Resource Support

Staff

Gayla Kraetsch Hartsough, Ph.D.
LA County CRC Executive Director
President, KH Consulting Group
Associate Adjunct Faculty, University of Southern California
ghartsough@crc.lacounty.gov

Thai V. Le, Ph.D.
LA County CRC Clerk, GIS, Public Policy, and Technical Support
Consultant, KH Consulting Group
University of Southern California
tle@crc.lacounty.gov

Subject Matter Experts

Carlos De Alba, Marketing, Media, and Outreach Consultant

Priti Mathur, ARCBridge
Demographic Analysis and ESRI Mapping Software

Bruce Adelson, Esq., Federal Compliance Consulting LLC
Professor Jonathan N. Katz, Ph.D., Caltech
Racially Polarized Voting Analysis

Independent Legal Counsel

Holly O. Whatley, Esq., Shareholder
Aleks R. Giragosian, Esq., Senior Counsel
Pamela Graham, Esq., Senior Counsel

Colantuono, Highsmith & Whatley, PC 790 E.
Colorado Blvd., Suite 850
Pasadena, CA 91101-2109
(213) 542-5700 tel
(213) 542-5710 fax
hwhatley@chwlaw.us

Times Up! Wrap Up



Citizens Redistricting Commission (CRC) Meeting

*** RECESS ***

LIVE STREAM WILL RESUME SHORTLY



LOS ANGELES COUNTY
REDISTRICTING
2021

