

# Citizens Redistricting Commission (CRC)

**Comisión de Redelimitación de Distritos (CRC)  
de ciudadanos del condado de los Ángeles**

**LIVE STREAM WILL BEGIN SHORTLY**

<https://www.youtube.com/LACountyRedistricting/>



LOS ANGELES COUNTY  
**REDISTRICTING**  
2021





LOS ANGELES COUNTY  
**REDISTRICTING 2021**

# **Los Angeles County Citizens Redistricting Commission (CRC)**

## **Comisión de Redelimitación de Distritos (CRC) de ciudadanos del condado de los Ángeles**

**Public Hearing No. 3**  
**December 1, 2021**  
**1 de diciembre de 2021**



# ATTENTION ALL PARTICIPANTS

## You must select your preferred language!

1. Click on “**Interpretation**” at the bottom of your screen
  2. Select English or Spanish
- You then can choose to mute the original audio for a clearer interpretation.

# ATENCION TODOS LOS PARTICIPANTES

## Debe elegir el idioma que prefiere!

1. Haga clic en la “**Interpretación**” abajo en su pantalla a mano derecha
  2. Elija Inglés o Español
- Luego, puede optar por "silenciar el audio original" para escuchar una interpretación más clara.



**IF YOU DO NOT CHOOSE A LANGUAGE, YOU WILL NOT HEAR THE INTERPRETATION.**  
**SÍ USTED NO SELECCIONA UN IDIOMA, NO PODRÁ ESCUCHAR LA INTERPRETACIÓN.**



# 1. Call to Order

# Notice



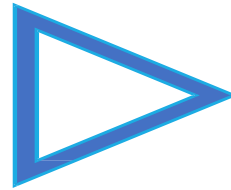
LOS ANGELES COUNTY  
**REDISTRICTING 2021**

This meeting is streaming live at:

<https://www.youtube.com/LACountyRedistricting/>

This meeting is being recorded and will be posted on LA County CRC website:

<https://redistricting.lacounty.gov>



**Deseamos recordarle al público que esta audiencia pública  
se está grabando y transmitiendo en directo en**

<https://www.youtube.com/LACountyRedistricting>

**El enlace de la grabación también se publicará y podrán acceder a ella a través del sitio  
web del Condado de Los Ángeles**

<https://redistricting.lacounty.gov>





# Notice

**During the CRC meeting, if you need technical assistance,  
use the Q&A button at the bottom of your Zoom Webinar screen.  
We can then assist you.**

**Si en algún momento los miembros del público tienen alguna dificultad técnica,  
por favor envíenme un mensaje en QA,  
y haremos todo lo posible por solucionar el problema.**

**We appreciate  
your patience.**

Thai V. Le, LA County CRC Clerk, is unable to provide support to tonight's Public Hearing.

Charlotte Maure and Heather Sims of KH Consulting Group will handle tonight's public hearing logistics for public comments.



## 2. Roll Call

Ahora pasaré lista. Les recuerdo que los nombres de los comisionados se llamarán en orden alfabético rotativo según su apellido. Comisionados, estén preparados para desenmudecer su micrófono y responder cuando llame su nombre.

1. Commissioner Jean Franklin
2. Commissioner David Holtzman
3. Commissioner Mary Kenney
4. Co-Chair Daniel Mayeda
5. Commissioner Mark Mendoza
6. Commissioner Apolonio Morales
7. Commissioner Nelson Obregon
8. Commissioner Priscilla Orpinela-Segura
9. Commissioner Hailes Soto
10. Commissioner Saira Soto
11. Commissioner Brian Stecher
12. Commissioner John Vento
13. Co-Chair Carolyn Williams
14. Commissioner Doreena Wong

1. Comisionada Jean Franklin
2. Comisionado David Holtzman
3. Comisionada Mary Kenney
4. Codirector Daniel Mayeda
5. Comisionado Mark Mendoza
6. Comisionado Apolonio Morales
7. Comisionado Nelson Obregon
8. Comisionada Priscilla Orpinela-Segura
9. Comisionado Hailes Soto
10. Comisionada Saira Soto
11. Comisionado Brian Stecher
12. Comisionado John Vento
13. Codirectora Carolyn Williams
14. Comisionada Doreena Wong







# Sign-Up Now for Public Comment

The LA County CRC is committed to receiving all public comment on redistricting map options.

*To give a fair opportunity for those who wish to make a comment orally, the Commission will receive oral public comment from anyone who submits a request to speak by 8:00 p.m. on the day of the Public Hearing.*

The Commission also welcomes written public comments at any time.



## How to Make a Public Comment

Type your name, affiliation/organization, and Agenda Item # into QA by 8:00 p.m.  
if you want to make an oral Public Comment.

If on a phone line, press \*9 to raise your hand. Once called upon, press \*6 to unmute and speak.

- Each Person Gets 1 Minute unless the Co-Chairs determine otherwise.
  - 2 minutes for Spanish interpretation
- Each person only gets 1 opportunity to speak.
- When you speak, share your name and affiliation at the beginning.
- Cada persona tendrá la oportunidad de hablar por 1 minuto.
  - 2 minutos para español interpretación
- Cada persona solo tiene 1 oportunidad para hablar.
- Cuando comience a hacer su comentario, por favor comparta su nombre y cualquier afiliación que tenga.

The public can also submit written comments  
on Agenda items at:

<https://publiccomment.redistricting.lacounty.gov/>

Si no quiere hablar pero quiere hacer un  
comentario público por escrito, use este enlace:

<https://publiccomment.redistricting.lacounty.gov/>

**Do not type written comments into QA.**

**They will not be captured as official submitted written comments.**



# How to Sign-Up to Make Public Comment During the Public Hearing

The LA County CRC is committed to receiving all public comment on redistricting map options.

*To give a fair opportunity for those who wish to make a comment orally, the Commission will receive oral public comment from anyone who submits a request to speak by 8:00 p.m. on the day of the Public Hearing.*

The Commission also welcomes written public comments at any time.

Please provide written public comment—*including map preferences and suggestions for modifying a map or maps*—by using the public comment form that will be made available in the "Chat" function of the Zoom meeting.

The form also can be accessed at any time on the Commission's website:

[www.redistricting.lacounty.gov](http://www.redistricting.lacounty.gov).





## How to Submit Written Public Comments

The public can submit written comments on Agenda items at:

<https://publiccomment.redistricting.lacounty.gov/>

Si no quiere hablar pero quiere hacer un comentario público por escrito, use este enlace:

<https://publiccomment.redistricting.lacounty.gov/>

**LOS ANGELES COUNTY REDISTRICTING 2021 PUBLIC COMMENT**

Meeting Date: 11/10/2021

First Name\*  MI  Last Name\*

Email  Phone

Address  City  State  Zip Code

Name of Organization Represented

Attach Word, Excel, or PDF supporting document(s). (5 attachments limit)

Agenda Items

Agenda	Title
<input type="checkbox"/>	4. General Public Comment
<input type="checkbox"/>	6.a. Racially Polarized Voting Analysis Report on Current 4 Map Options
<input type="checkbox"/>	6.b. Review and Discussion of public input on map options and submitted maps, including Commissioners' observations and suggested modifications, and possible direction to ARCBridge to prepare modified or new maps for future consideration
<input type="checkbox"/>	OPTION A Draft Map Chosen By Commissioners for Further Public Input and Discussion - Option A



# Public Testimony Helpful Hints

- Audio public comments; no video
- If you want to show support or no support for maps, complete the public comment form online: <https://publiccomment.redistricting.lacounty.gov/>
- If you want to suggest adjustments to the maps, either:
  - Complete the online public comment form
  - Make oral public comments on how to improve maps
- Be specific about desired modifications (e.g., adjust boundaries along XYZ, combine cities XYZ (by name), do not split a Neighborhood Council XYZ (by name, etc.))



## 3. Approval of Agenda – Co-Chair Carolyn Williams



# 4. Action/ Discussion Items

*4a. Public Hearing on Two DRAFT Maps and Discussion of Map Options, including Commissioners' observations and suggested modifications, and Potential Direction to ARCBridge/Staff Regarding Map Modifications — Co-Chairs Dan Mayeda and Carolyn Williams*

**AMENDED:**

**At the Special Meeting on November 29, 2021, the Commissioners voted to include in Public Hearing No. 3 additional draft map options for further public input and discussion: Map Options B-2, F-1, and G**



# Original Map Option B-1 and Map Option F for Public Comment

Las opciones del mapa de redistribución de distritos



Option B-1

Option B modified: Keep Burbank together; put Santa Monica in its entirety in SD4. T...

Explore



Option B-1 (ESRI Layer View)

Option B modified: Keep Burbank together; put Santa Monica in its entirety in SD4.

Explore



Option F

ARCBridge Analysis of Option F. To view ESRI Layer View, click: <https://redistricting-...>

Explore



Option F (ESRI Layer View)

Explore





# Amended: Refinements of Original Map Options for Further Exploration



Option B-2



Option B-2 (ESRI Layer View)

**Map Option B-2 builds on Map Option B-1; keeps cities and unincorporated areas together**

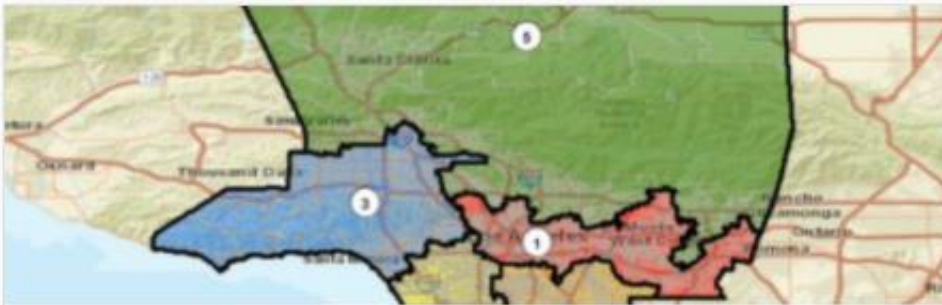


Option F-1



Option F-1 (ESRI Layer View)

**Map Option F-1 builds Map Option F; keeps cities and unincorporated areas together**



Option G



Option G (ESRI Layer View)

**Outgrowth of Map Option F; identified as a new Map Option G**

<https://redistricting-lacounty.nub.arcgis.com/datasets/option-g-esri-layer-view>

Explore

Explore



## Split Cities and Unincorporated Areas in Map Option B-2

**Option B-2**

ARCBridge analysis of Option B-2. To view this in the ESRI layer view, click:...

[Explore](#)

**Option B-2 (ESRI Layer View)**


[Explore](#)

- Los Angeles - Longwood
- Unincorporated - Covina (Charter Oak)






## Split Cities and Unincorporated Areas in Map Option F-1



**Option F-1**

ARCBridge analysis of Option F-1. To view this in the ESRI layer view, click:...

[Explore](#)



**Option F-1 (ESRI Layer View)**

Note: This conceptual map does not pass deviation integrity test. Commissioners...

[Explore](#)

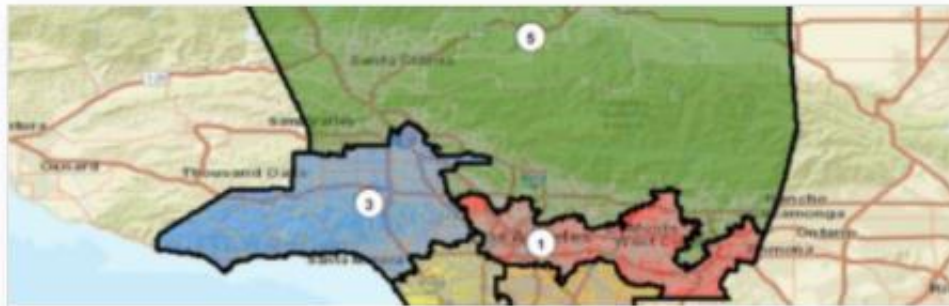
- Los Angeles - Westchester
- Unincorporated - Covina
- Unincorporated - Covina (Charter Oak)
- Unincorporated - Miracle Mile
- Unincorporated - Northeast San Gabriel





## Split Cities and Unincorporated Areas in Map Option G

- Unincorporated - Covina
- Unincorporated - Covina (Charter Oak)
- Unincorporated - Northeast San Gabriel



Option G

ARCBridge analysis of Option G. To view this in the ESRI layer view, click:  
<https://redistricting-lacounty.hub.arcgis.com/datasets/option-g-esri-layer-view>

Explore



Option G (ESRI Layer View)

Explore



# 5. Executive Director Report





# Upcoming Public Hearings and Meetings

**Special meeting:** Sunday, December 5, 2021,  
3:00 p.m.

## **Last Public Hearing scheduled for:**

1. Tues., Dec. 7 at 6:30p – Public Hearing No. 4 (Day 30)
  - **Note:** Public must sign up by 8:00 p.m. on the day of the Public Hearing to make oral public comments

# Adjournment

Co-Chair Daniel Mayeda



To learn about the LA County CRC, sign up at:  
<https://redistricting.lacounty.gov/>

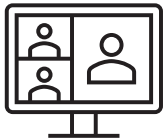




Sign up and stay informed: <https://redistricting.lacounty.gov>



**Meetings will be virtual until further notice.** If we offer hybrid formats in the future, attendance in person in keeping with COVID-19 health safety protocols – **masks required**



Attend and participate virtually in CRC meetings and public hearings:  
<https://us02web.zoom.us/j/82726060927>



Listen only to CRC meetings and public hearings by calling:  
(669) 900-9128, enter: 827 2606 0927#



View CRC meetings and public hearings on YouTube:  
<https://www.youtube.com/LACountyRedistricting/>



Submit written comments via:  
<https://publiccomment.redistricting.lacounty.gov/>  
By mail: Los Angeles County CRC, P.O. Box 56447, Sherman Oaks, CA 91413





## LA County CRC Resource Support

### Staff

Gayla Kraetsch Hartsough, Ph.D.  
LA County CRC Executive Director  
President, KH Consulting Group  
Associate Adjunct Faculty, University of Southern California  
[ghartsough@crc.lacounty.gov](mailto:ghartsough@crc.lacounty.gov)

Thai V. Le, Ph.D.  
LA County CRC Clerk, GIS, Public Policy, and Technical Support  
Consultant, KH Consulting Group  
University of Southern California  
[tle@crc.lacounty.gov](mailto:tle@crc.lacounty.gov)

### Subject Matter Experts

Carlos De Alba, Marketing, Media, and Outreach Consultant

Priti Mathur, ARCBridge  
Demographic Analysis and ESRI Mapping Software

Bruce Adelson, Esq., Federal Compliance Consulting LLC  
Professor Jonathan N. Katz, Ph.D., Caltech  
Racially Polarized Voting Analysis

### Independent Legal Counsel

Holly O. Whatley, Esq., Shareholder  
Aleks R. Giragosian, Esq., Senior Counsel  
Pamela Graham, Esq., Senior Counsel

Colantuono, Highsmith & Whatley, PC 790 E.  
Colorado Blvd., Suite 850  
Pasadena, CA 91101-2109  
(213) 542-5700 tel  
(213) 542-5710 fax  
[hwhatley@chwlaw.us](mailto:hwhatley@chwlaw.us)



# LOS ANGELES COUNTY REDISTRICTING 2021

Public Comment: **1 Minute**

Time Remaining





# LOS ANGELES COUNTY REDISTRICTING 2021

## Public Comment: 2 Minutes

Time Remaining





# LOS ANGELES COUNTY REDISTRICTING 2021

## Public Comment: 3 Minutes

Time Remaining



# Times Up! Wrap Up



# Citizens Redistricting Commission (CRC) Meeting

**\* RECESS \***

**LIVE STREAM WILL RESUME SHORTLY**

---



LOS ANGELES COUNTY  
**REDISTRICTING**  
2021

