



**THE PEOPLE'S BLOC**

Presentation to the Los Angeles County Redistricting  
Commission

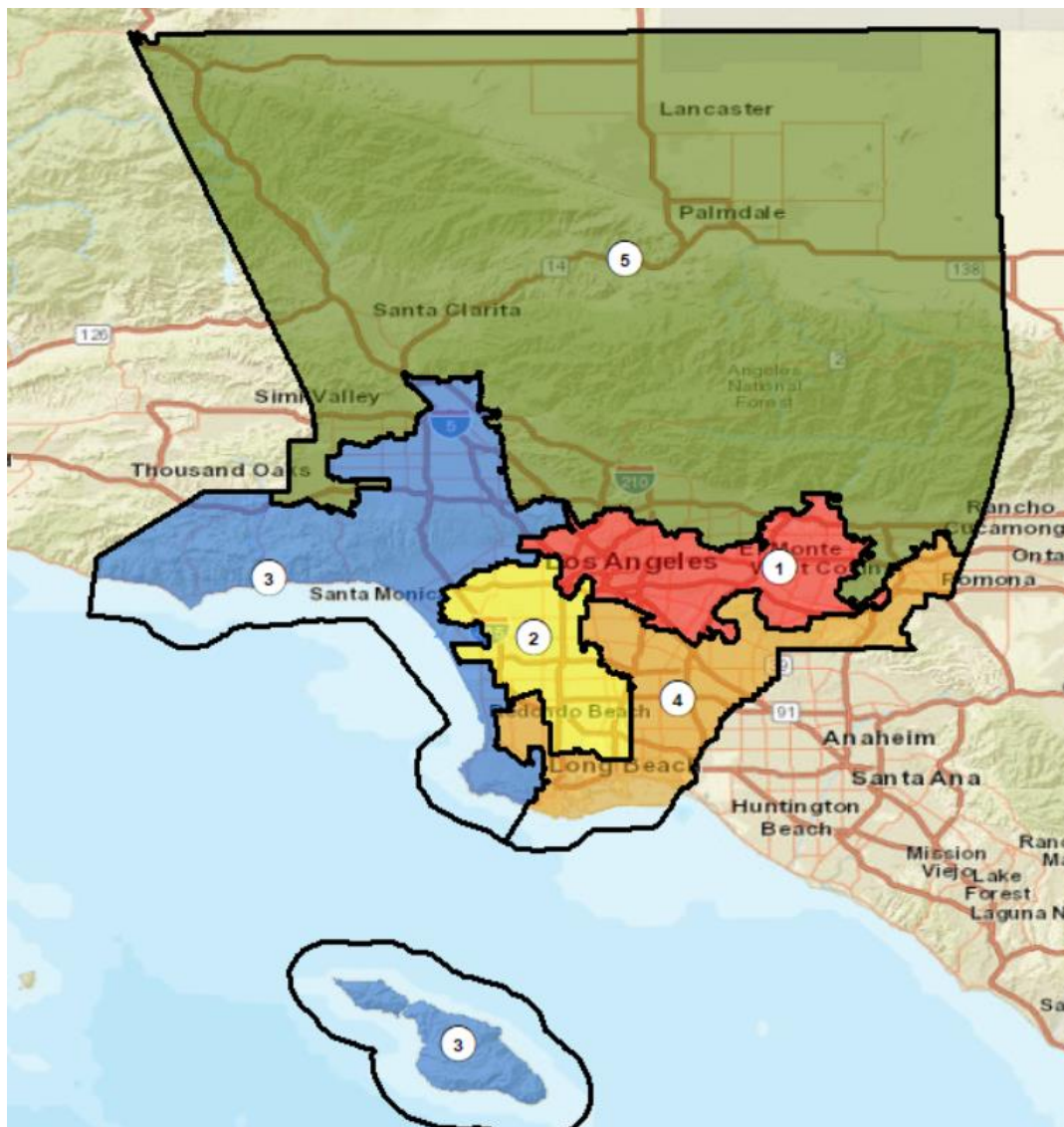
# People's Bloc Principles



1. Equity and Solidarity
2. Community Participation
3. Centering Powerbuilding Organizations



# Plan Name: Draft Map A

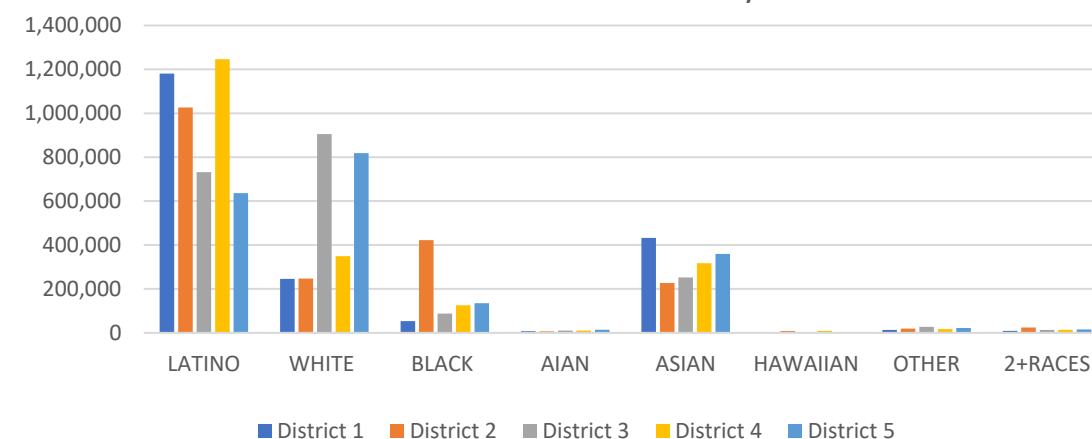


## Maximum Deviation – 7.23%

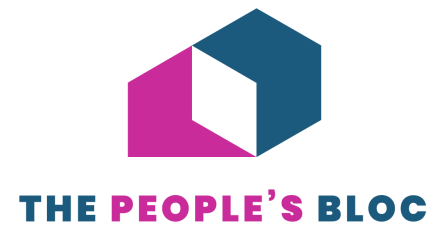
Name	Total Pop	Deviation	Deviation %
1	1,942,986	-66,599	-3.31%
2	1,980,711	-28,874	-1.44%
3	2,031,020	21,435	1.07%
4	2,088,372	78,787	3.92%
5	2,004,837	-4,748	-0.24%

District	Latino	%	White	%	Black	%	Asian	%
1	1,180,718	60.77%	245,646	12.64%	52,993	2.73%	432,100	22.24%
2	1,026,064	51.80%	247,249	12.48%	421,915	21.30%	227,137	11.47%
3	731,615	36.02%	905,494	44.58%	87,481	4.31%	252,292	12.42%
4	1,246,664	59.70%	349,027	16.71%	125,648	6.02%	316,878	15.17%
5	636,642	31.76%	818,525	40.83%	134,794	6.72%	359,685	17.94%

Ethnic and Racial Information by District



# People's Bloc Priorities



1.Keep ELA whole

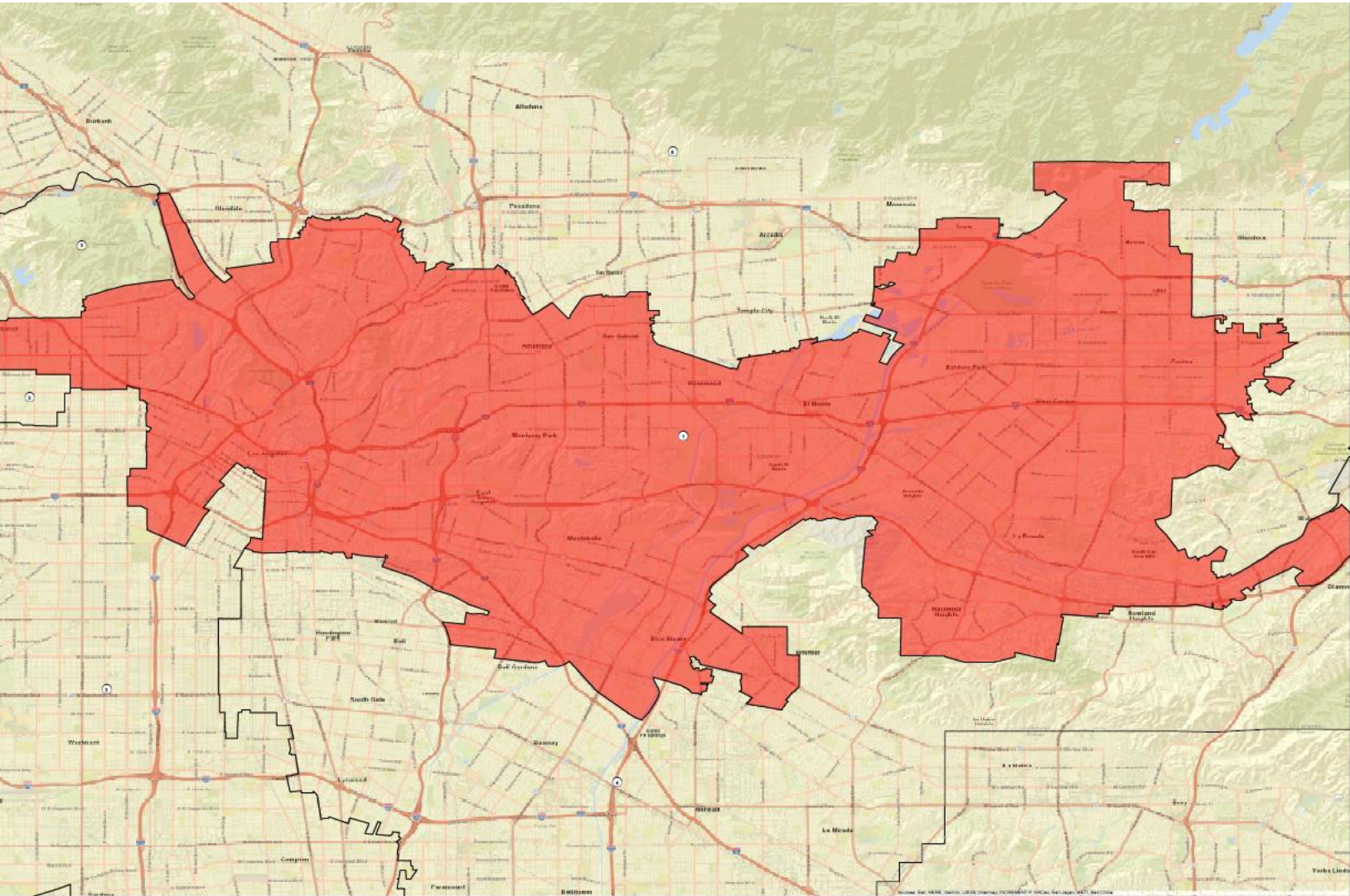
2.Keep All the AAPI COIs whole



# District 1

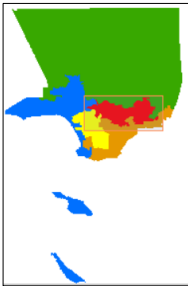
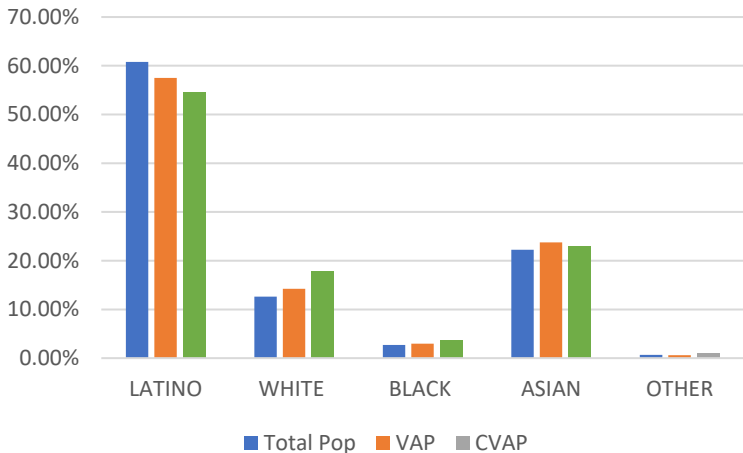


**THE PEOPLE'S BLOC**



Name	Total Pop	Deviation	Deviation %
1	1,942,,986	-66599	-3.31%

Total Pop, VAP, CVAP



District 1	Total Pop	VAP	CVAP
LATINO	60.77%	57.50%	54.52%
WHITE	12.64%	14.25%	17.85%
BLACK	2.73%	2.96%	3.60%
ASIAN	22.24%	23.75%	22.97%
OTHER	0.67%	0.62%	1.06%

# People's Bloc Priorities



3. Keep South East LA Whole

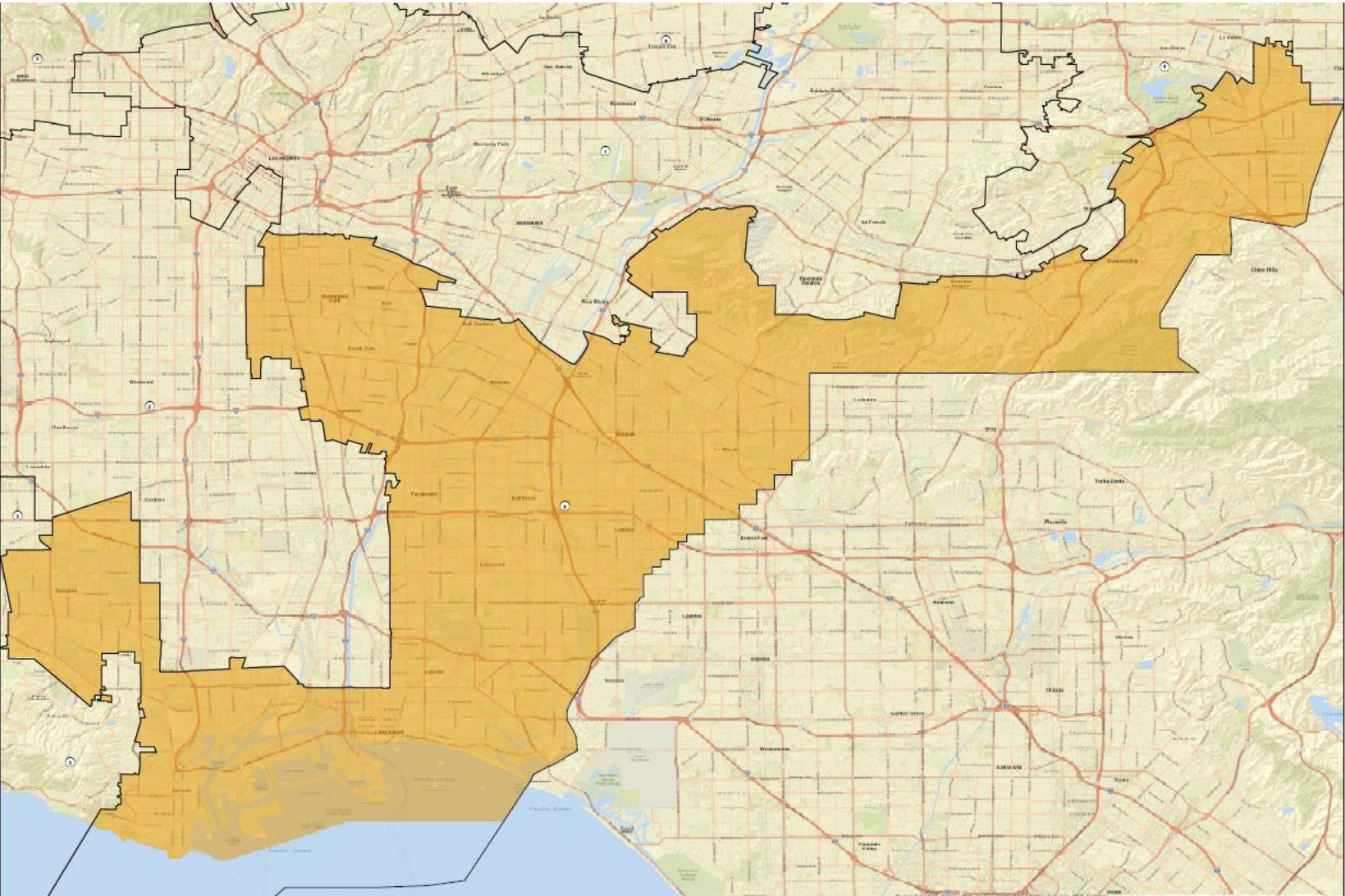
4. Create 2 Latinx VRA Districts



# District 4

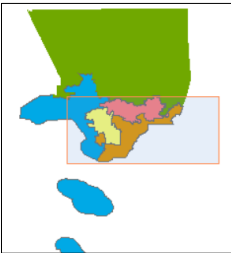
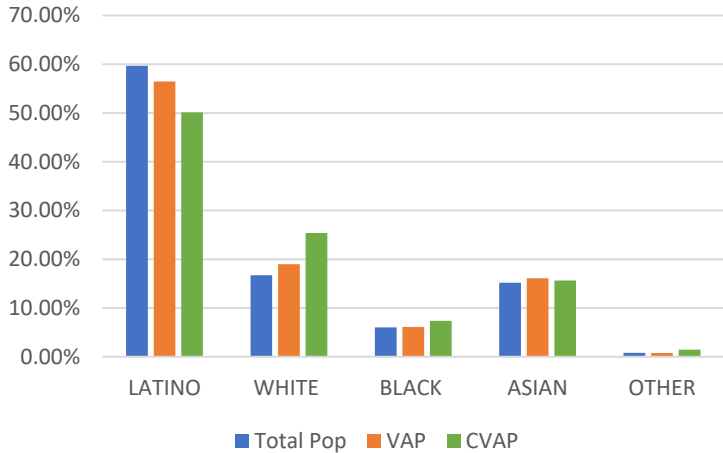


**THE PEOPLE'S BLOC**



Name	Total Pop	Deviation	Deviation %
4	2,088,372	78,787	3.92%

Total Pop, VAP, CVAP



District 4	Total Pop	VAP	CVAP
LATINO	59.70%	56.46%	50.15%
WHITE	16.71%	18.99%	25.38%
BLACK	6.02%	6.13%	7.38%
ASIAN	15.17%	16.09%	15.65%
OTHER	0.81%	0.75%	1.44%

# People's Bloc Priorities



5. Maintain a Black Effective District with 30% CVAP

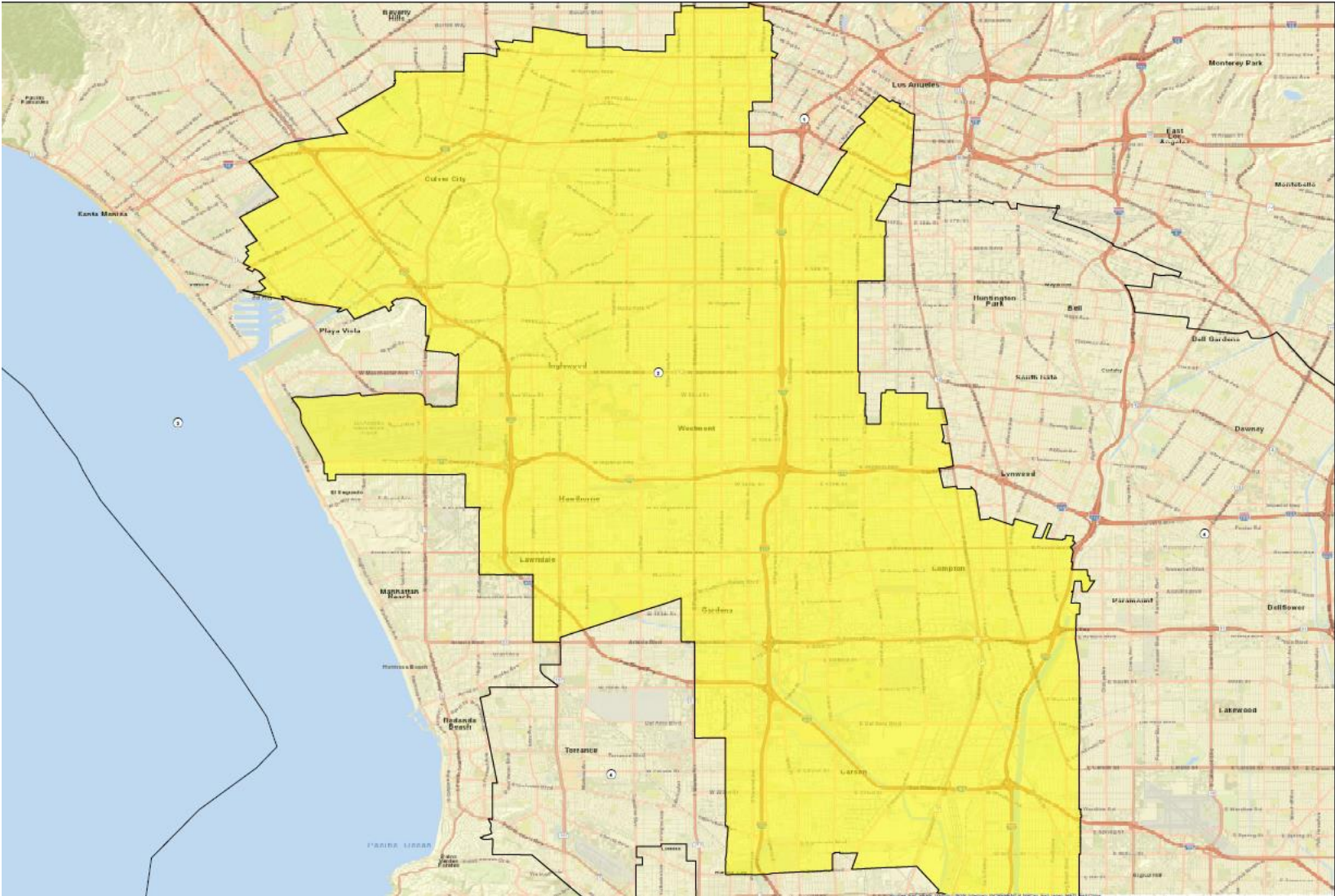
6. Acknowledge the Undercount in LA



# District 2

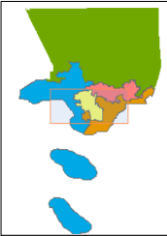
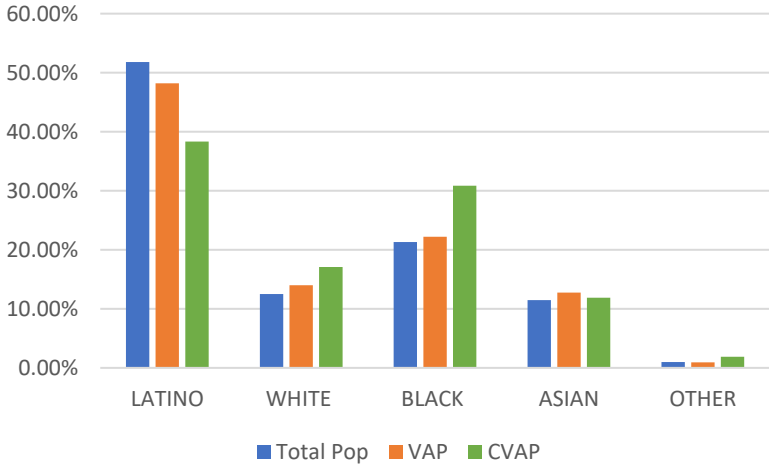


## THE PEOPLE'S BLOC



Name	Total Pop	Deviation	Deviation %
2	1,980,711	-28,874	-1.44%

Total Pop, VAP, CVAP

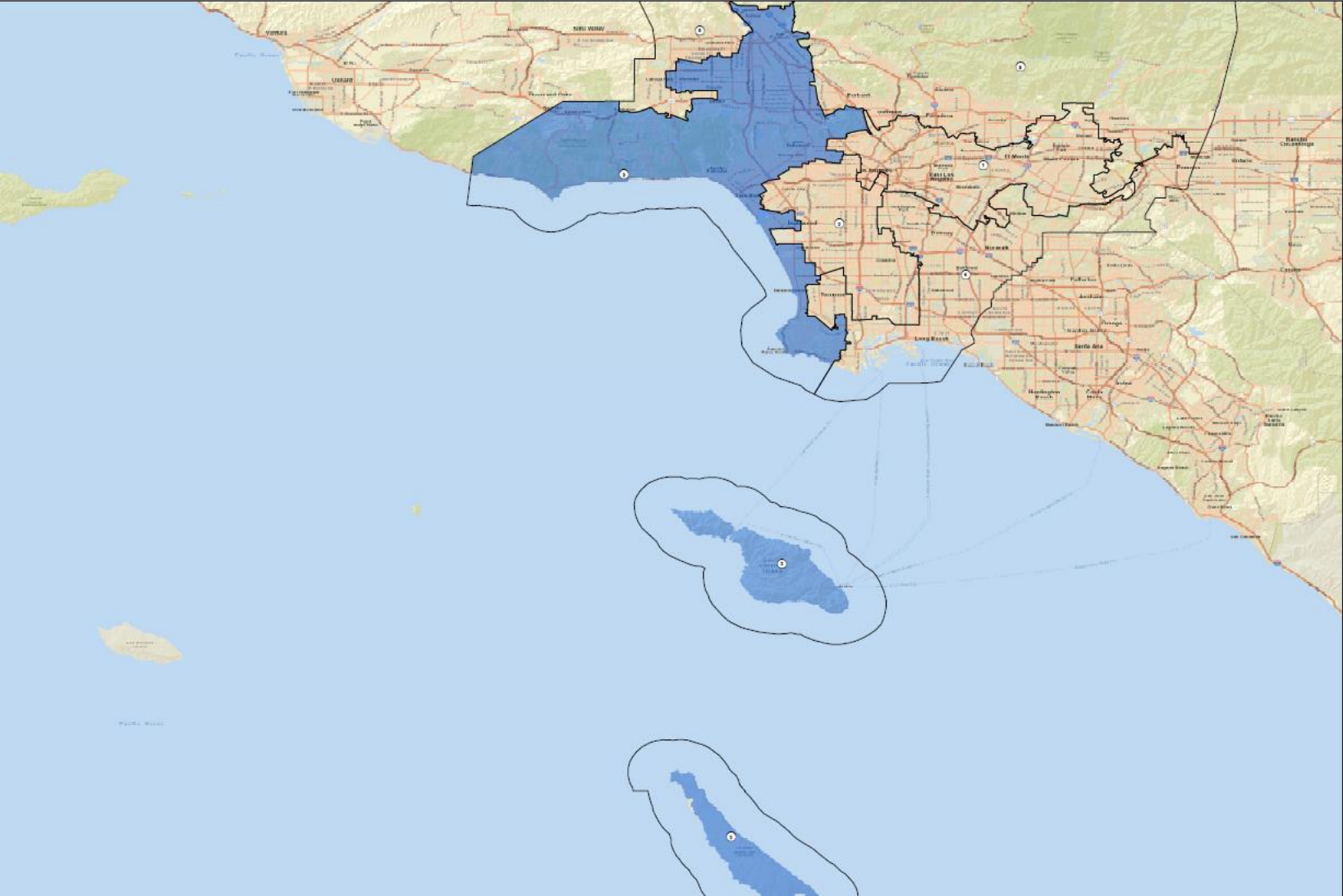


District 2	Total Pop	VAP	CVAP
LATINO	51.80%	48.19%	38.33%
WHITE	12.48%	13.98%	17.06%
BLACK	21.30%	22.18%	30.85%
ASIAN	11.47%	12.74%	11.88%
OTHER	0.97%	0.93%	1.87%

# District 3

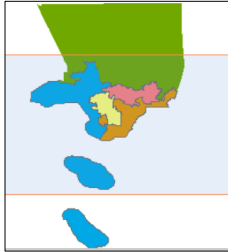
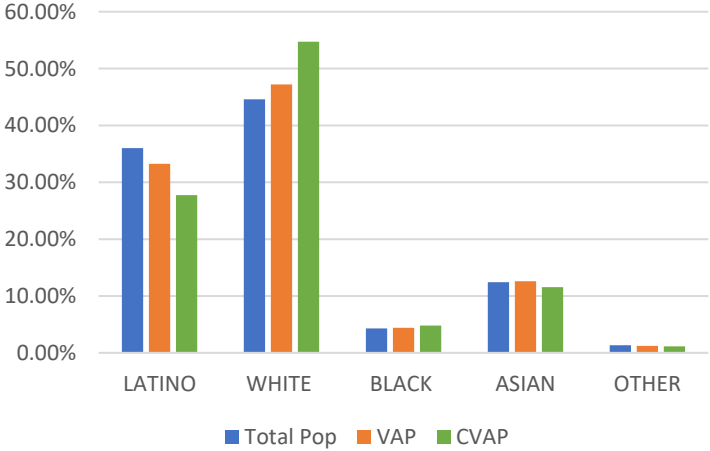


**THE PEOPLE'S BLOC**



Name	Total Pop	Deviation	Deviation %
3	2,031,020	21,435	1.07%

Total Pop, VAP, CVAP



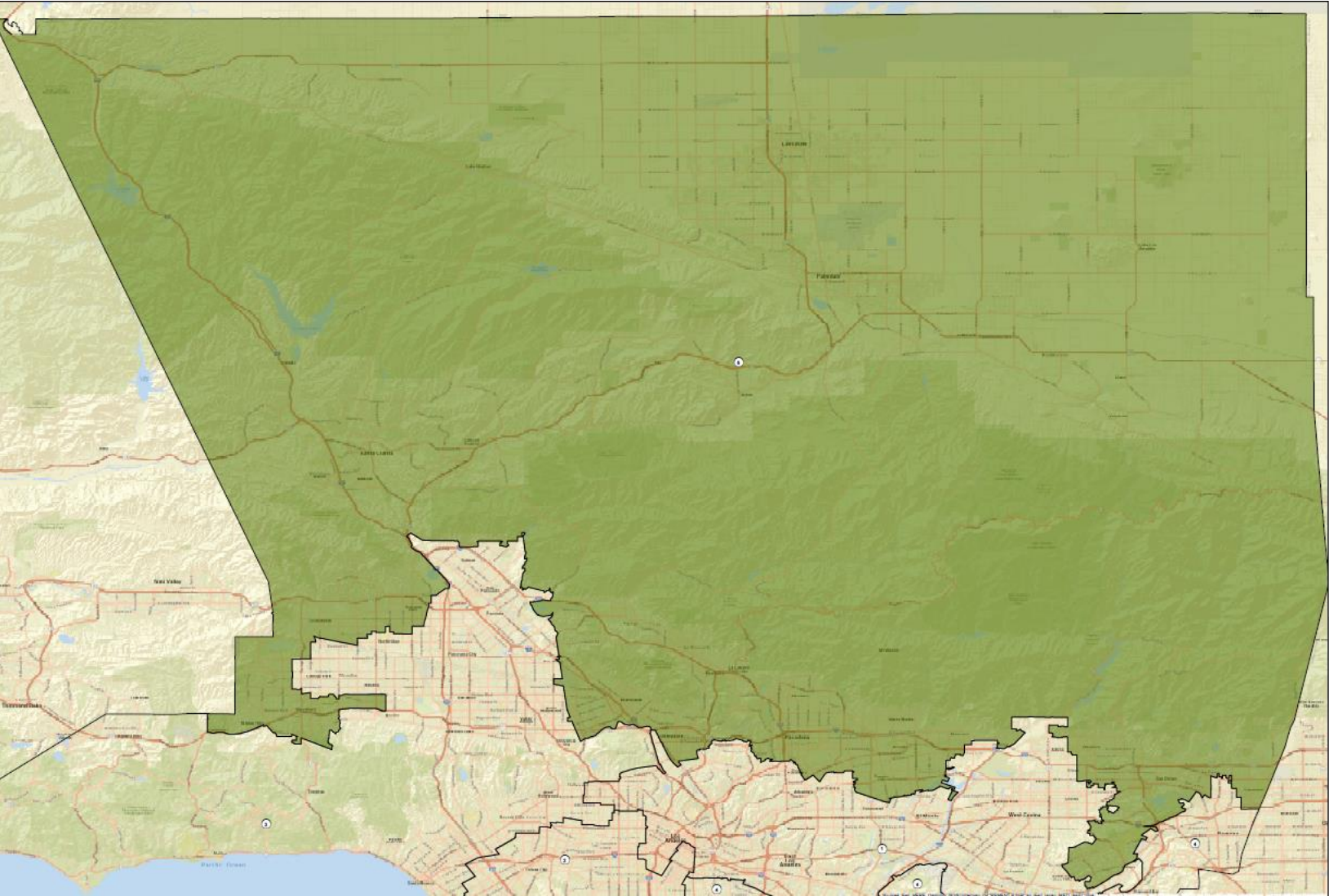
District 3	Total Pop	VAP	CVAP
LATINO	36.02%	33.24%	27.73%
WHITE	44.58%	47.21%	54.73%
BLACK	4.31%	4.42%	4.82%
ASIAN	12.42%	12.60%	11.57%
OTHER	1.34%	1.25%	1.15%



# District 5

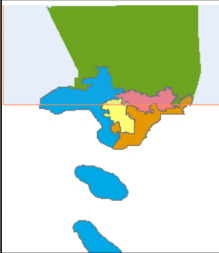
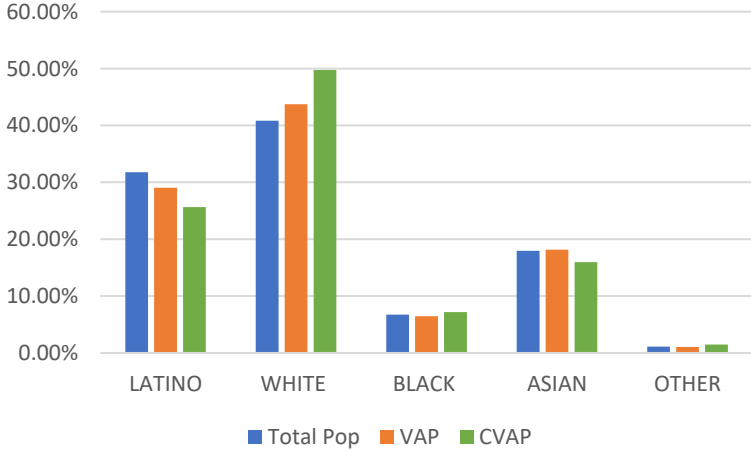


THE PEOPLE'S BLOC



Name	Total Pop	Deviation	Deviation %
5	2,004,837	-4,748	-0.24%

Total Pop, VAP, CVAP



District 5	Total Pop	VAP	CVAP
LATINO	31.76%	29.05%	25.64%
WHITE	40.83%	43.73%	49.76%
BLACK	6.72%	6.44%	7.19%
ASIAN	17.94%	18.14%	15.94%
OTHER	1.11%	1.05%	1.47%

# Thank You!



**THE PEOPLE'S BLOC**