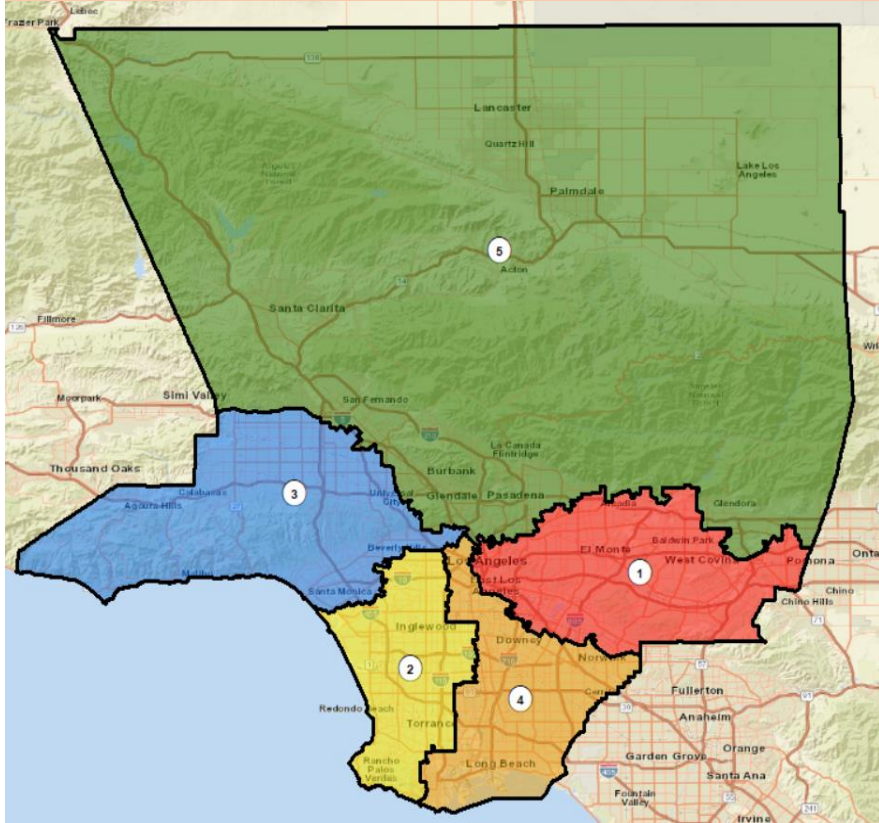


Option D: *Diverse Wedges*

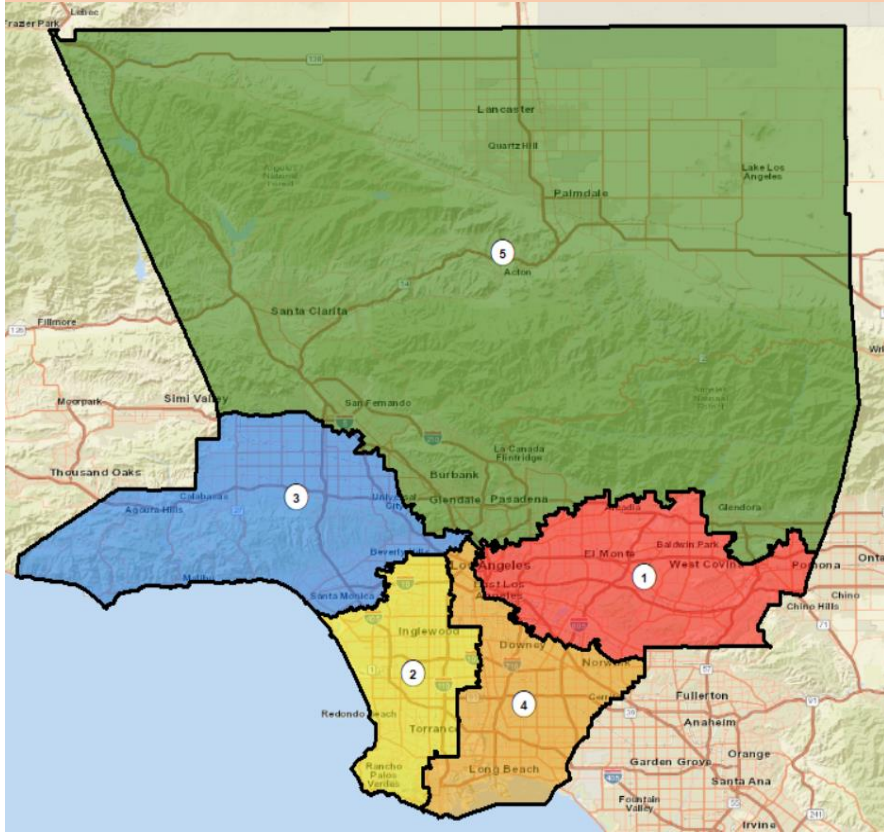


Explanation of Option D

Presentation to the County of LOS ANGELES
CITIZENS REDISTRICTING COMMISSION
by Brian Stecher

*Maps and population statistics provided by
ARCBridge Consulting & Training Inc.*

Option D: *Diverse Wedges*

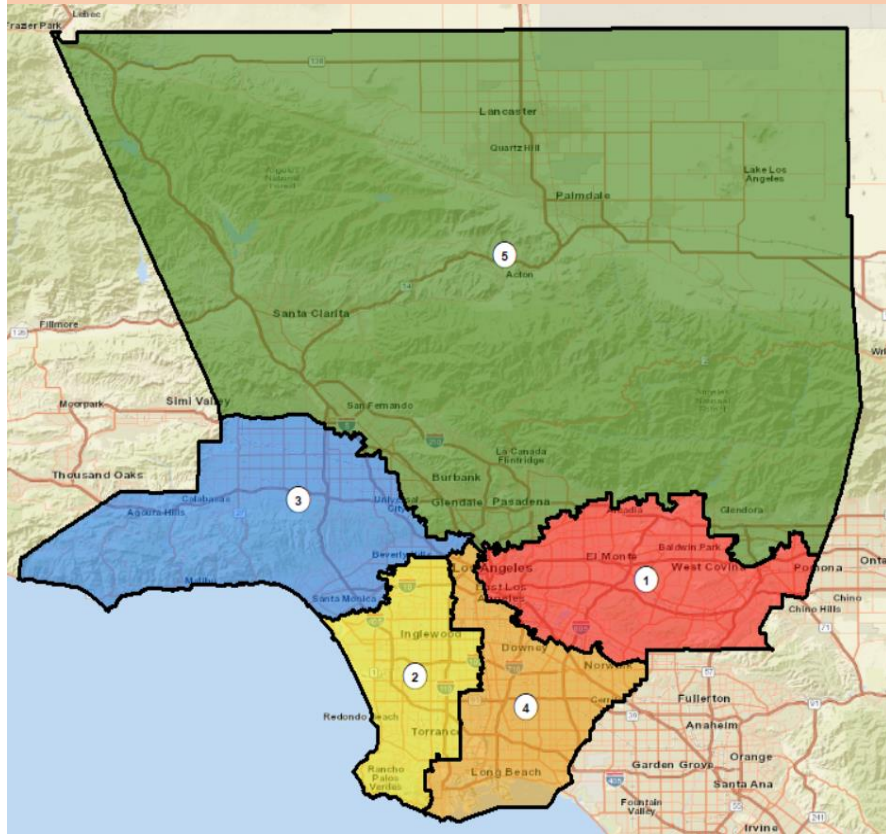


Approach: *Good Government Through Reduced Partisanship*

Strengths

- District populations are reasonable equal
 - Max deviation 1.54%; room for changes
- Reflects LA County's racial, ethnic and language distributions
 - 2 Majority-minority districts (Total and CVAP)
- Reduces narrow interest-group politics
 - Promotes the needs of all residents
- Keeps most cities/unincorporated areas and COI together
 - Wedges drawn to preserve COI
- Creates districts that are compact and recognizable
 - 4 of 5 districts meet P-P compactness test²

Option D: *Diverse Wedges*

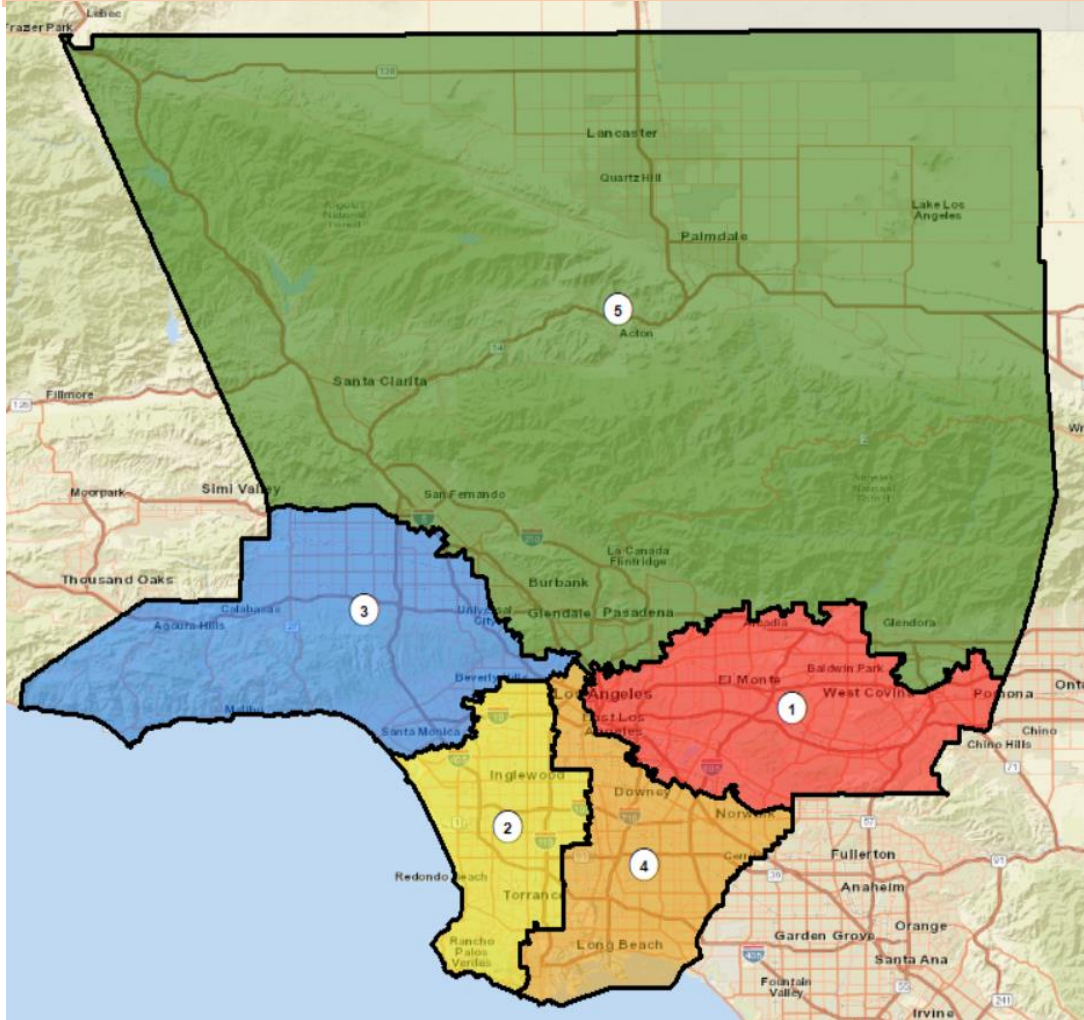


Approach: *Good Government Through Reduced Partisanship*

Weakness

- Needs fine tuning
 - Careful checking of boundaries at a fine level of detail (e.g., Catalina is part of District 4).
 - Input from public and Commissioners can improve map details

Option D: Diverse Wedges



Income Below Poverty Level Past 12 Months

District 1	District 2	District 3	District 4	District 5
13.6%	17.4%	13.1%	18.0%	12.5%

Income Above \$150K

District 1	District 2	District 3	District 4	District 5
14.4%	16.9%	23.3%	12.5%	21.1%

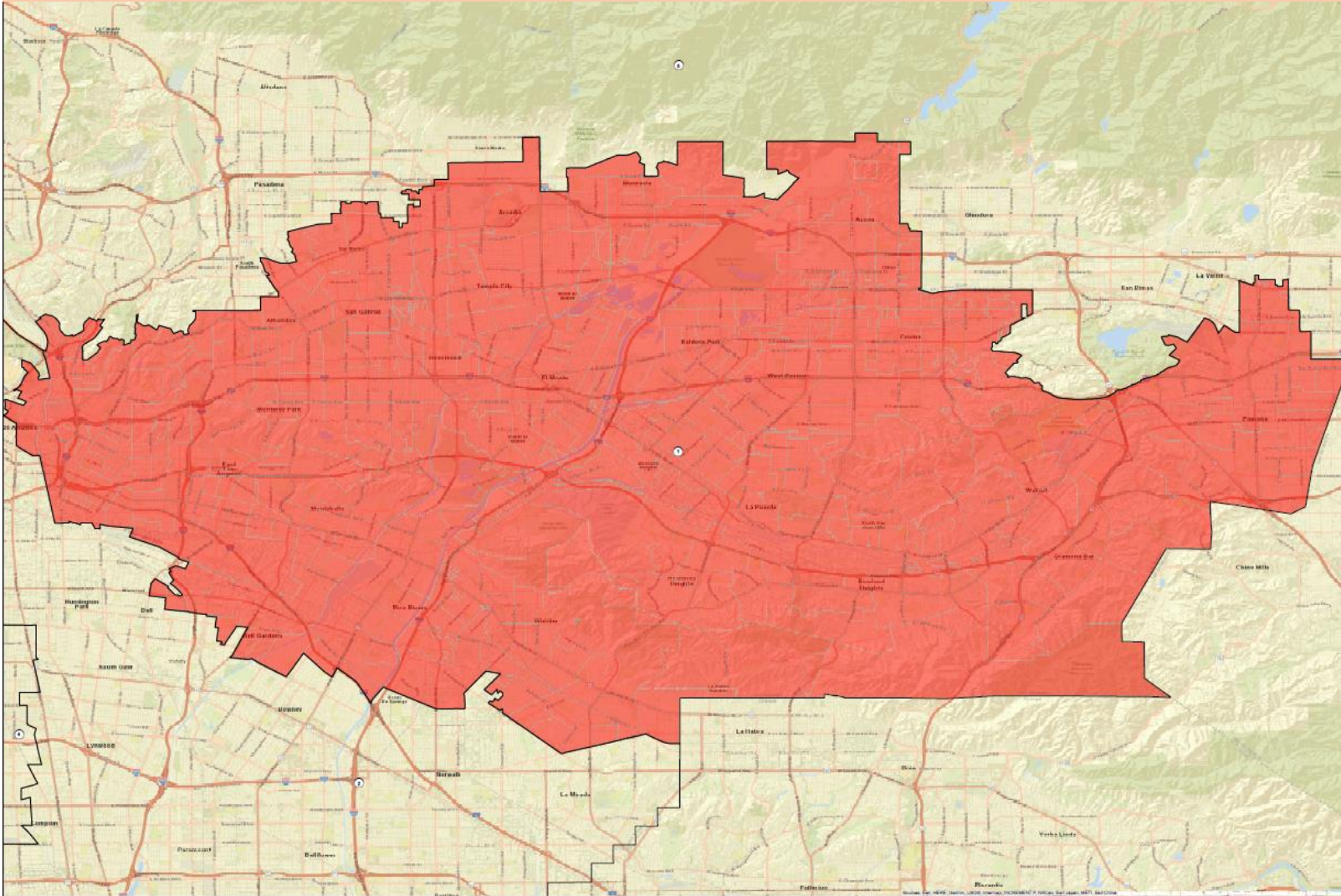
Primary Home Language: English Only

District 1	District 2	District 3	District 4	District 5
30.4%	45.9%	51.8%	36.0%	53.3%

No High School Diploma

District 1	District 2	District 3	District 4	District 5
25.5%	22.2%	12.9%	28.6%	15.9%

Option D: District 1

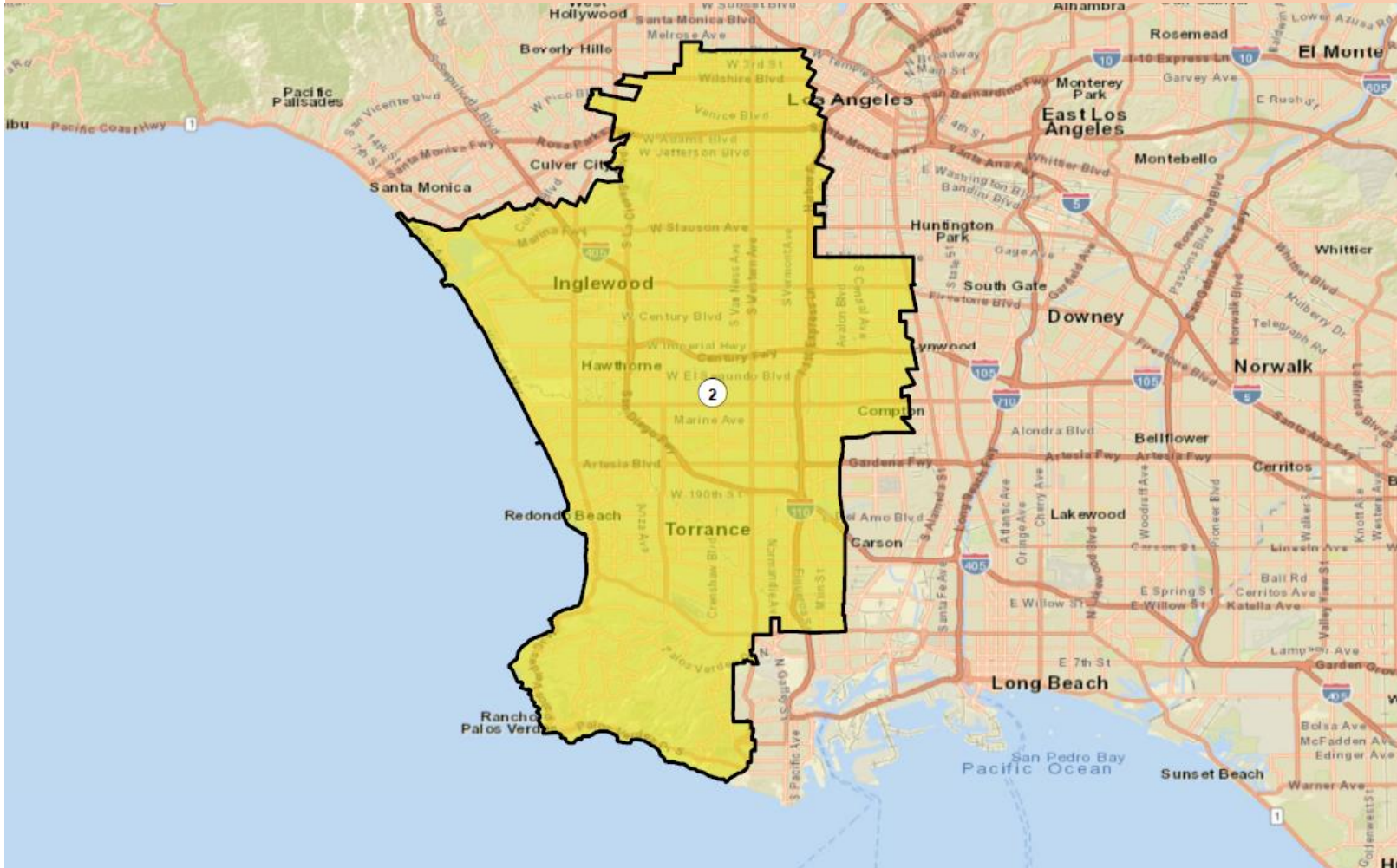


District 1	Total Pop	VAP	CVAP
LATINO	60.48%	57.54%	54.99%
WHITE	9.52%	10.76%	14.64%
BLACK	2.20%	2.34%	2.96%
ASIAN	26.36%	27.99%	26.40%
OTHER	0.55%	0.49%	1.01%

Major Areas:

- San Gabriel Valley (south of foothills)
- Pomona Valley
- East LA, Northeast LA & Southeast LA

Option D: District 2

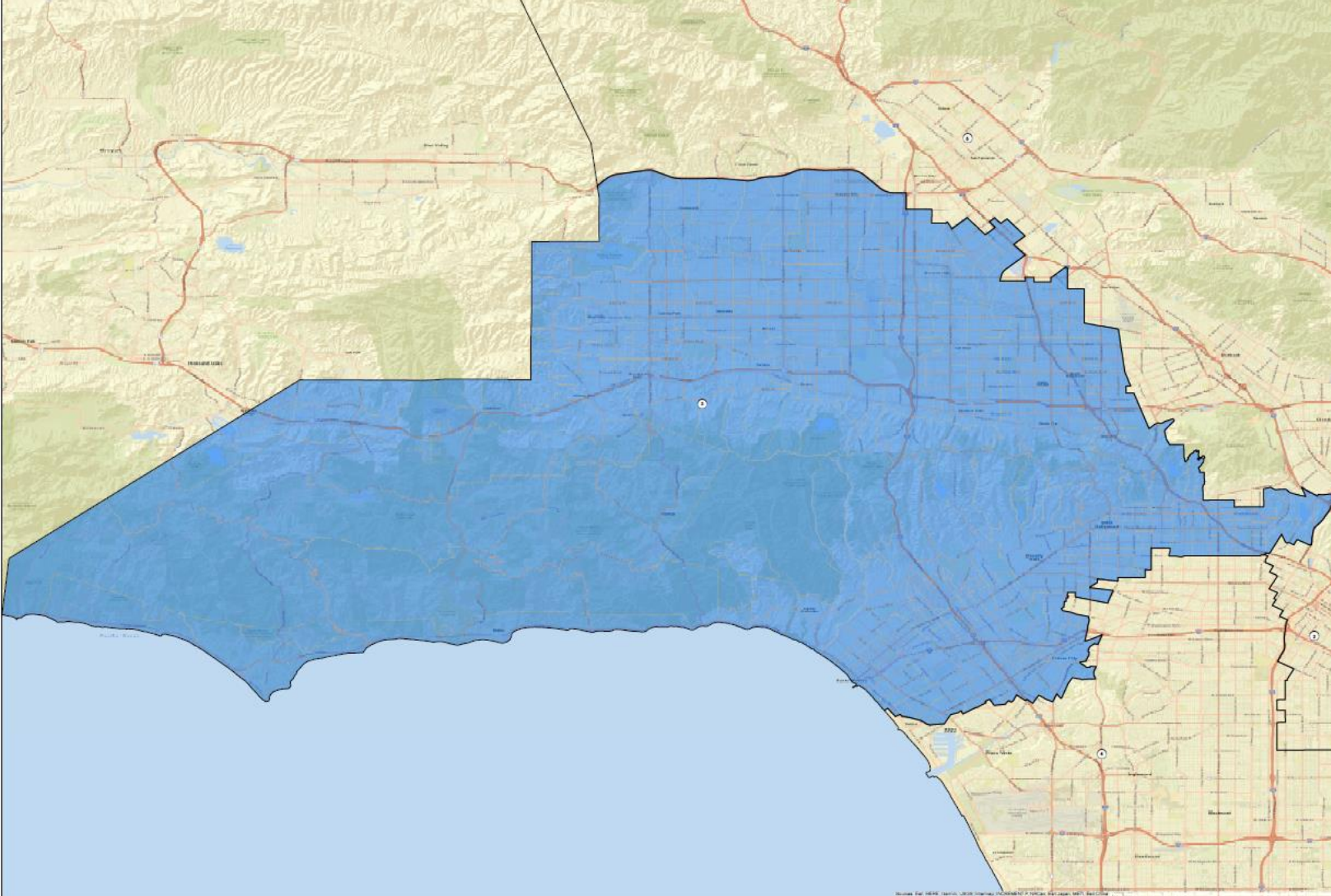


District 4	Total Pop	VAP	CVAP
LATINO	44.63%	41.39%	32.86%
WHITE	19.31%	21.16%	26.13%
BLACK	18.34%	18.89%	25.02%
ASIAN	14.68%	15.61%	14.31%
OTHER	1.11%	1.05%	1.68%

Major Areas:

- Wilshire Center
- South Central Los Angeles
- Coastal Cities (Marina south)
- Palos Verdes Peninsula

Option D: District 3

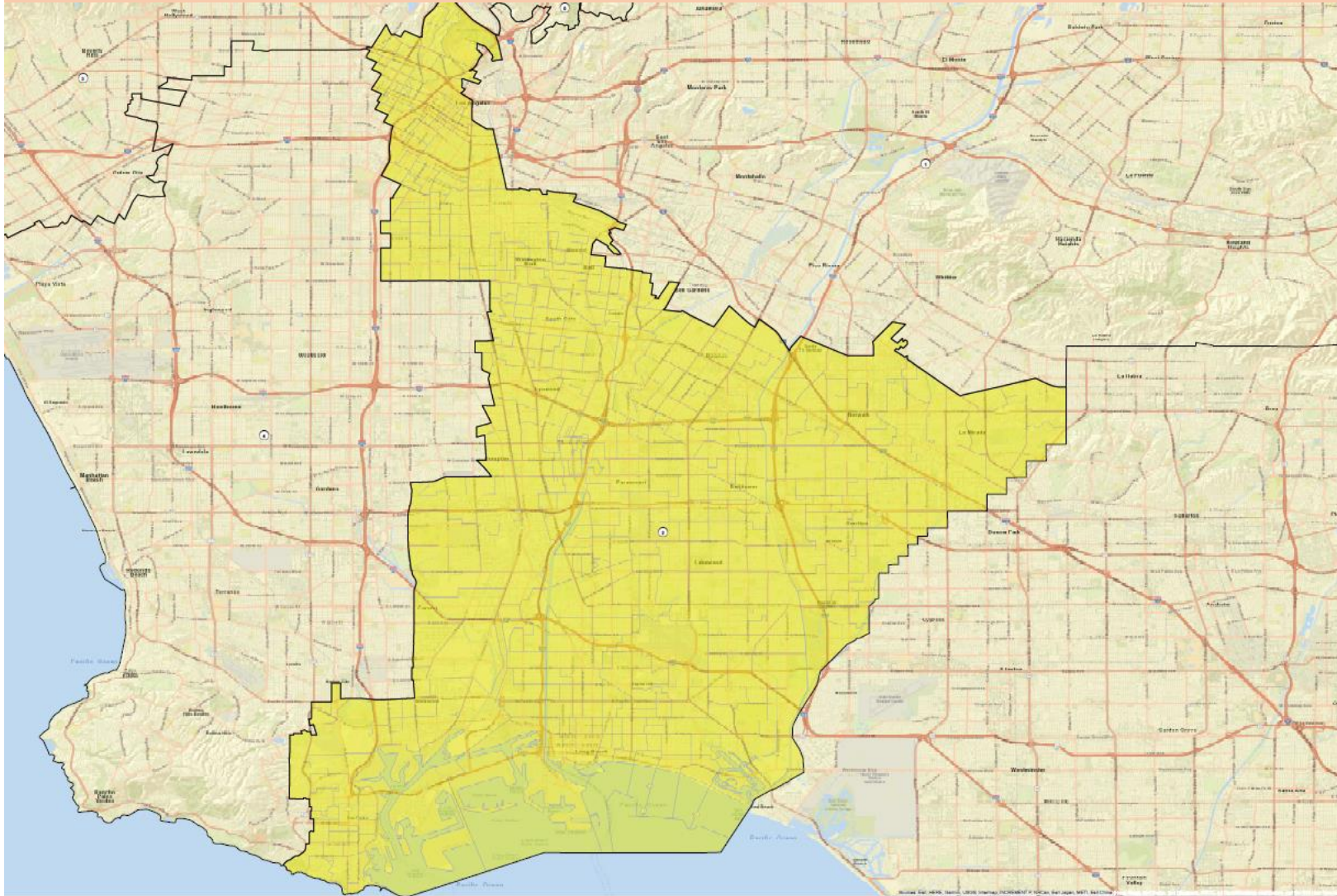


District 3	Total Pop	VAP	CVAP
LATINO	31.43%	28.98%	23.84%
WHITE	47.21%	49.49%	56.94%
BLACK	4.86%	4.96%	5.68%
ASIAN	13.71%	13.94%	12.35%
OTHER	1.41%	1.32%	1.19%

Major Areas:

- San Fernando Valley (west of I-5)
- Santa Monica Mountains watershed
- Westside (north of Marina del Rey)
- Hollywood
- Silverlake

Option D: District 4

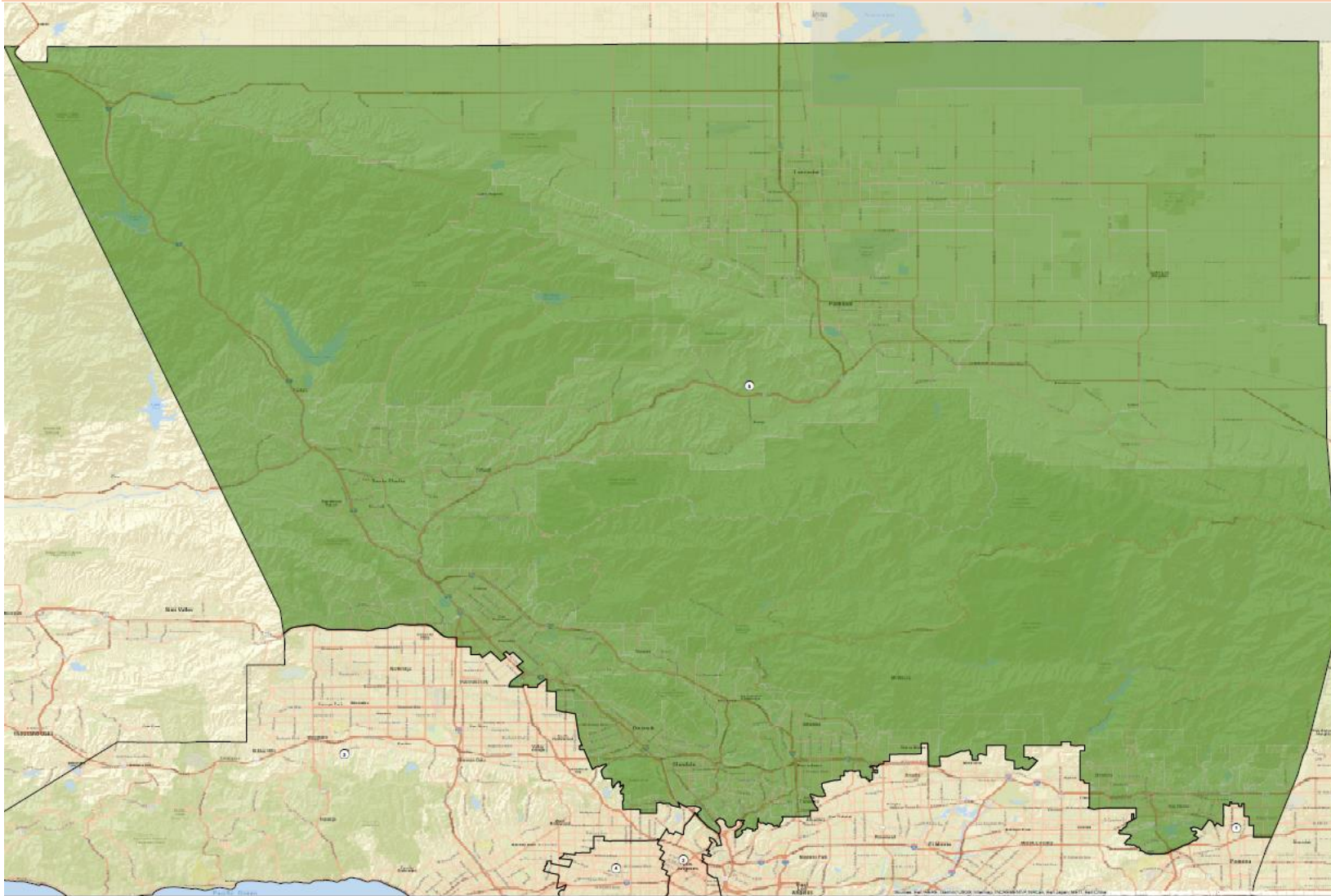


District 2	Total Pop	VAP	CVAP
LATINO	62.36%	58.85%	50.81%
WHITE	14.60%	16.78%	22.63%
BLACK	9.07%	9.40%	12.04%
ASIAN	11.46%	12.51%	12.86%
OTHER	0.78%	0.74%	1.66%

Major areas:

- DTLA
- Gateway Cities
- Harbor Cities
- Long Beach
- Catalina Island (needs to be added)

Option D: District 5

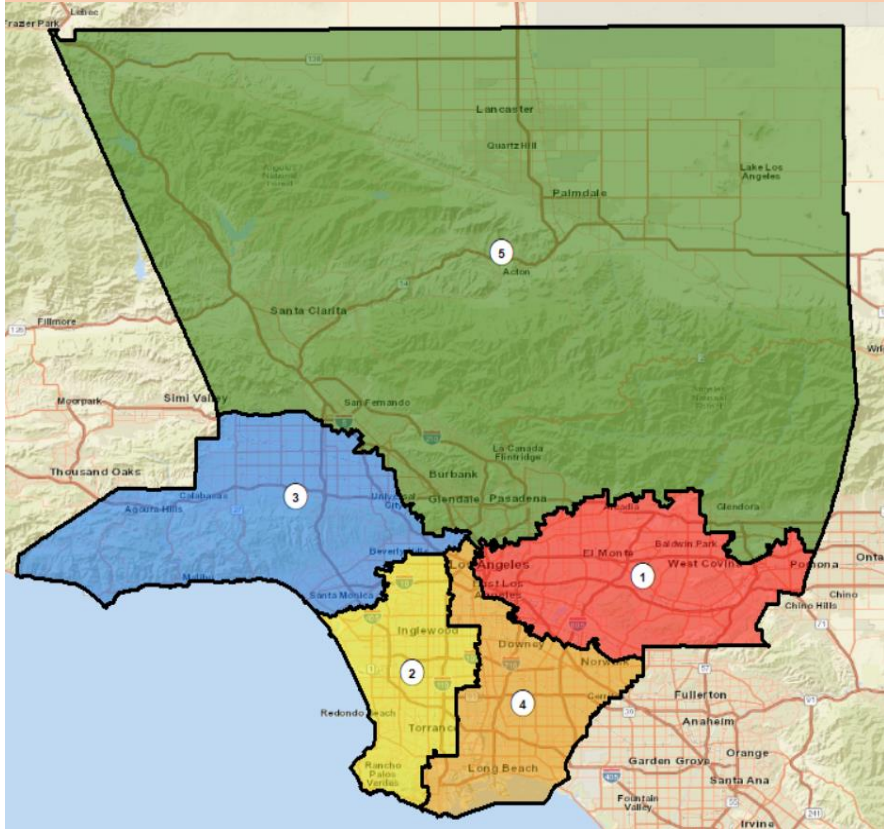


District 5	Total Pop	VAP	CVAP
LATINO	40.99%	38.11%	33.70%
WHITE	37.10%	39.99%	45.73%
BLACK	6.48%	6.27%	7.08%
ASIAN	12.81%	13.10%	12.01%
OTHER	1.04%	0.99%	1.48%

Major Areas:

- North County
- Northeast SFV
- Burbank, Glendale, Pasadena
- Foothill Communities of SGV

Option D: *Diverse Wedges*



Motivation: *Good Government Through Reduced Partisanship*

Option D is the best choice because it:

- Empowers minority and majority voters to elect representatives of their choosing
- Respects city boundaries, NCs and COI
- Creates compact districts with geographic integrity
- Ensures that each Supervisor has constituents from central city to County edge
 - Full range of points of view
- Encourages compromise on effective policies not entrenched, special interest politics