

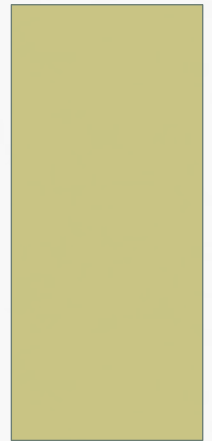


**MALDEF**

The Latino Legal Voice for Civil Rights in America.

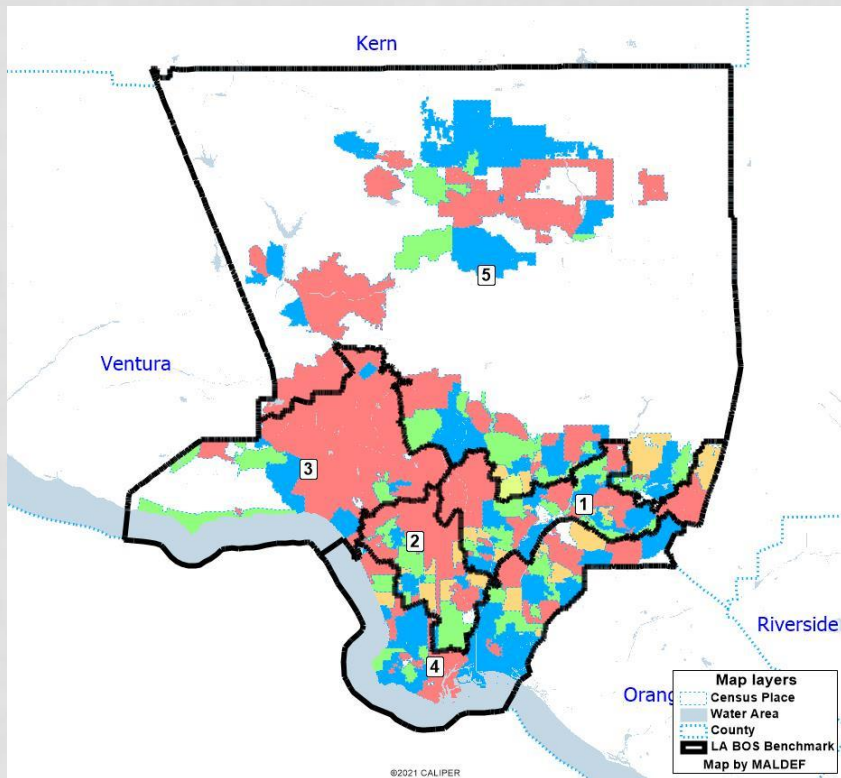
# LOS ANGELES COUNTY REDISTRICTING PLAN

OPTION C

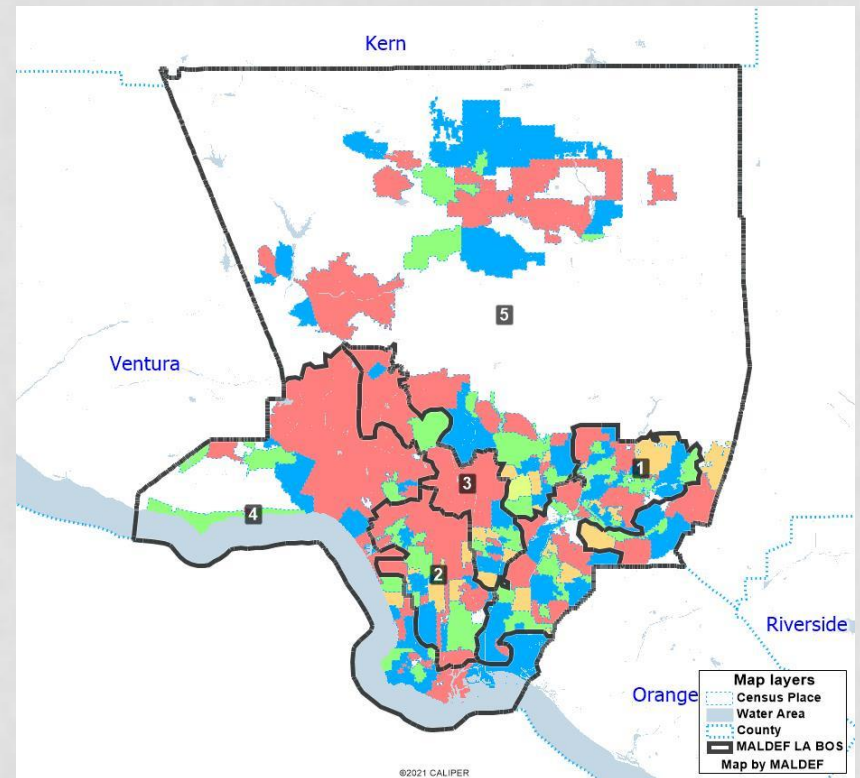


# LOS ANGELES COUNTY OVERVIEW

## Benchmark

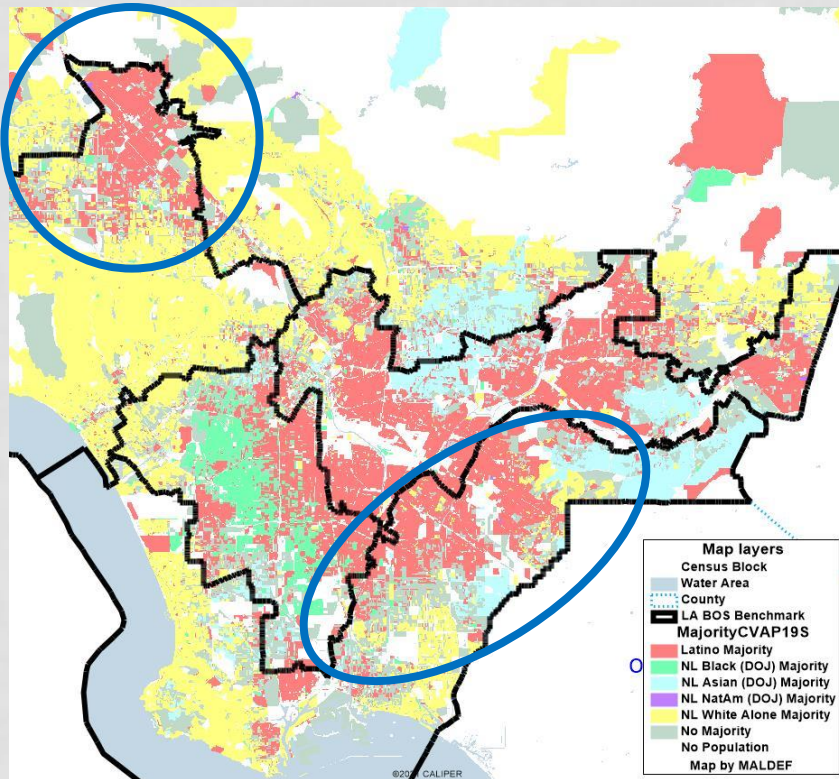


## Option C

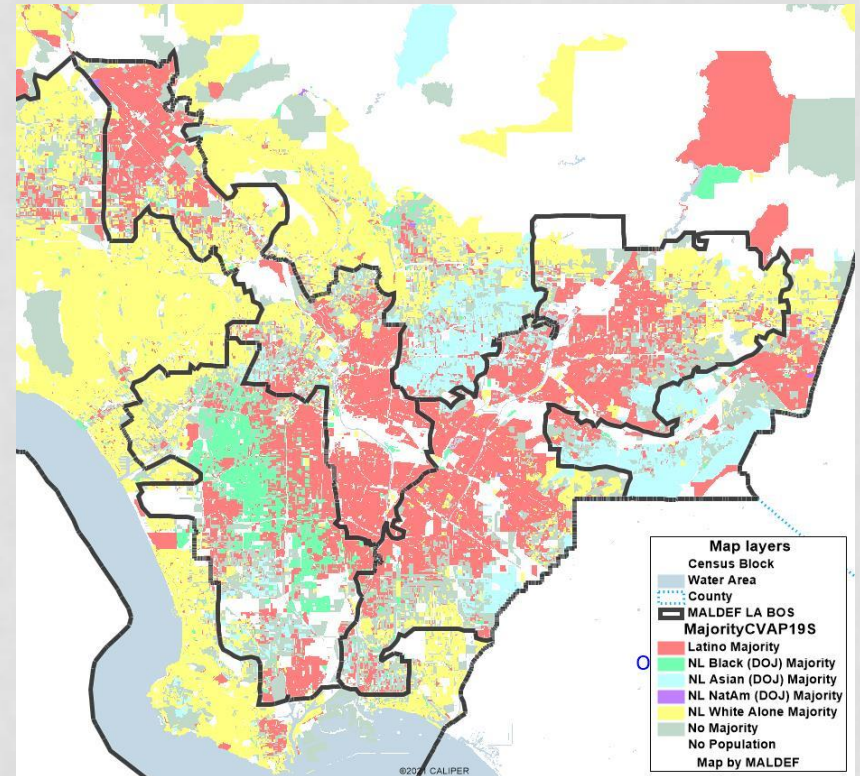


# LOS ANGELES COUNTY (DETAIL) MAJORITY CVAP

## Benchmark



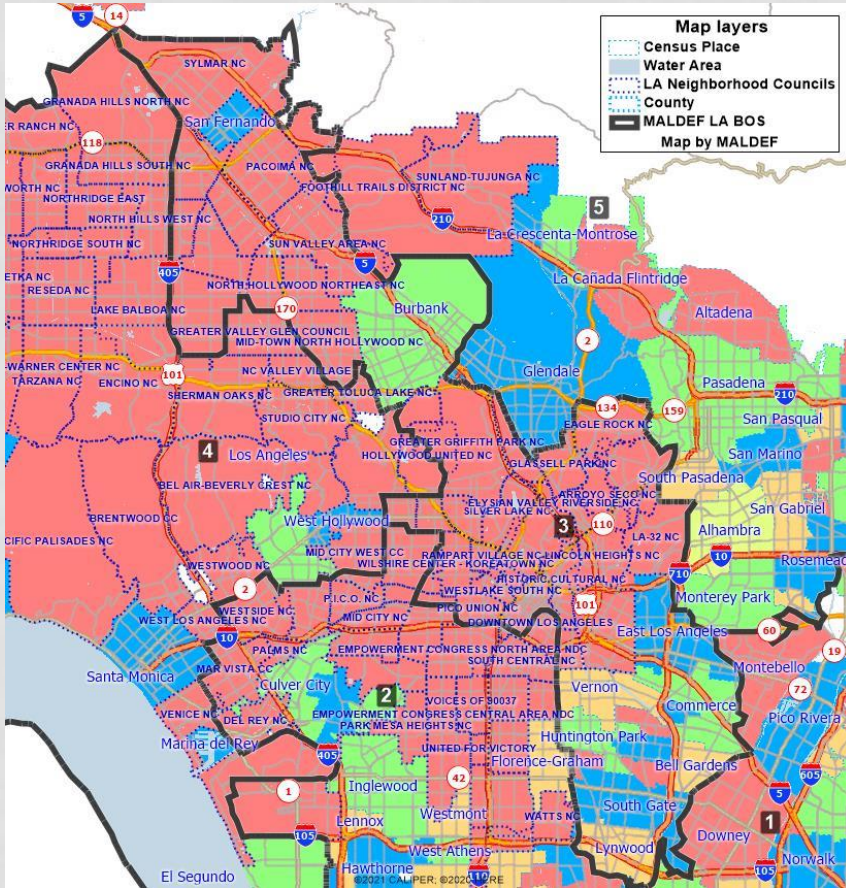
## MALDEF (10/26/2021)



Current Plan separates Latinos into two districts where they cannot elect a candidate of choice (Blue) and packs other Latinos into one district. SGV Asians also separated.

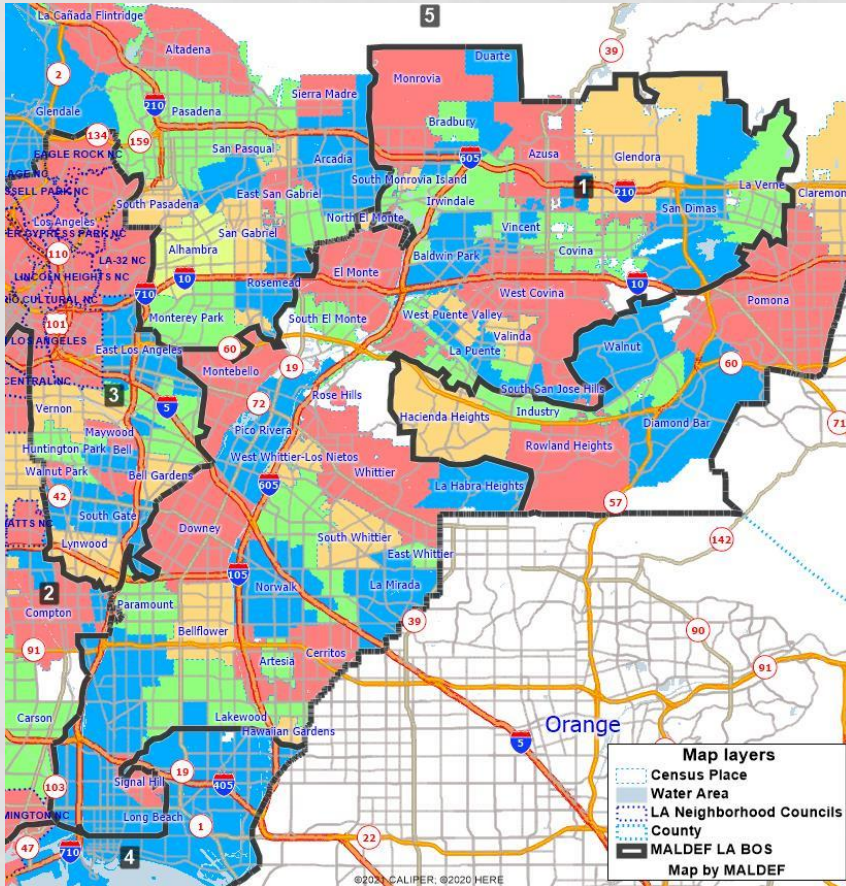
MALDEF Plan unites Latinos in LA County in compact, reasonable manner, while respecting current Black opportunity *and* giving the Asian community a strong influence (or coalition) district

# MALDEF BOS 3



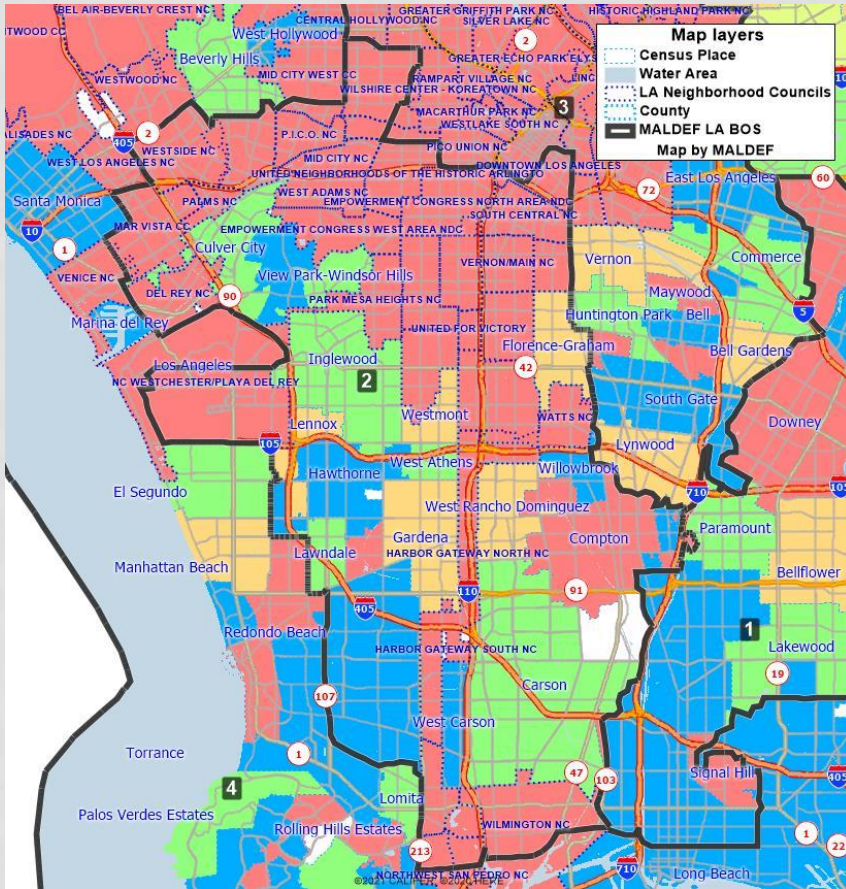
- **Total Population:** 1,993,807
  - **Deviation:** -15,781
  - **%Deviation:** -0.79%
  - **%Latino CVAP:** 57.55%
  - **%Black CVAP-DOJ:** 5.47%
  - **%Asian CVAP-DOJ:** 12.84%
  - **%Native American CVAP-DOJ:** 0.56%
  - **%NL-White CVAP:** 22.99%
- 
- **Latino Majority District**
  - **NEW Latino Opportunity District**
- 
- **Cities/Communities:**
    - East San Fernando Valley, Burbank (Neighborhood Councils east of I-5 whole)
    - Northeast Los Angeles City
    - East Los Angeles and Southeast Cities
    - “The I-5 Freeway” District

# MALDEF BOS 1



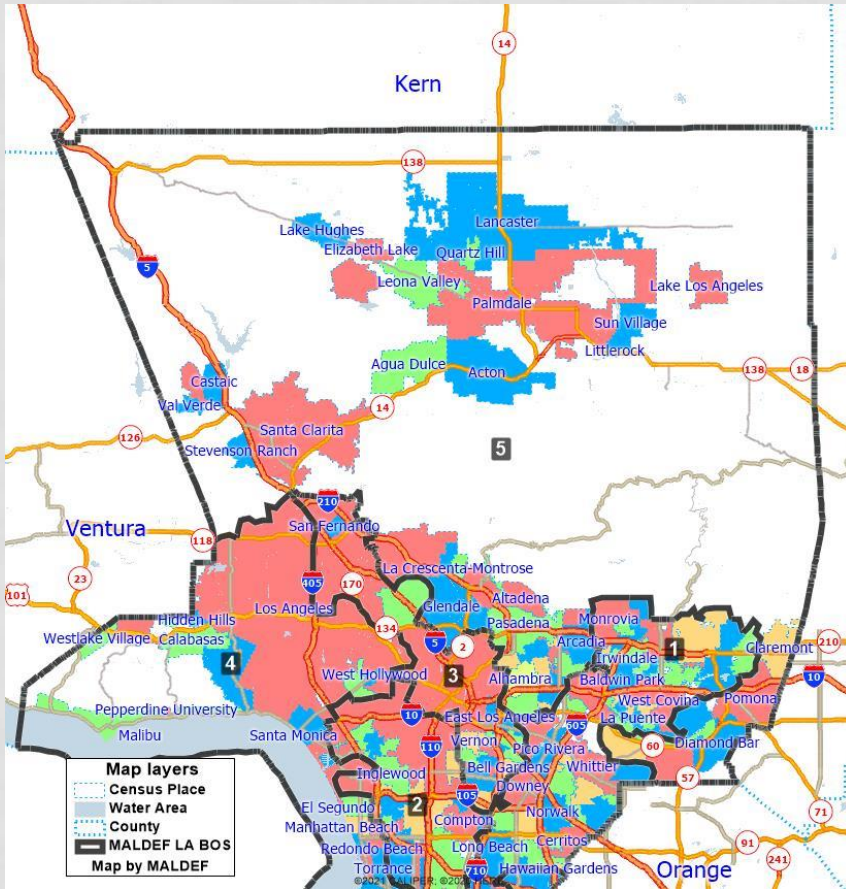
- **Total Population:** 1,977,091
  - **Deviation:** -32,497
  - **%Deviation:** -1.62%
  - **%Latino CVAP:** 54.08%
  - **%Black CVAP-DOJ:** 6.57%
  - **%Asian CVAP-DOJ:** 16.39%
  - **%Native American CVAP-DOJ:** 0.45%
  - **%NL-White CVAP:** 21.44%
- 
- **Latino Majority District**
  - **Latino Opportunity District**
- 
- **Cities/Communities:**
    - East San Gabriel Valley
    - Gateway Cities
    - Northwest Long Beach
    - “The 605 Freeway” District

# MALDEF BOS 2



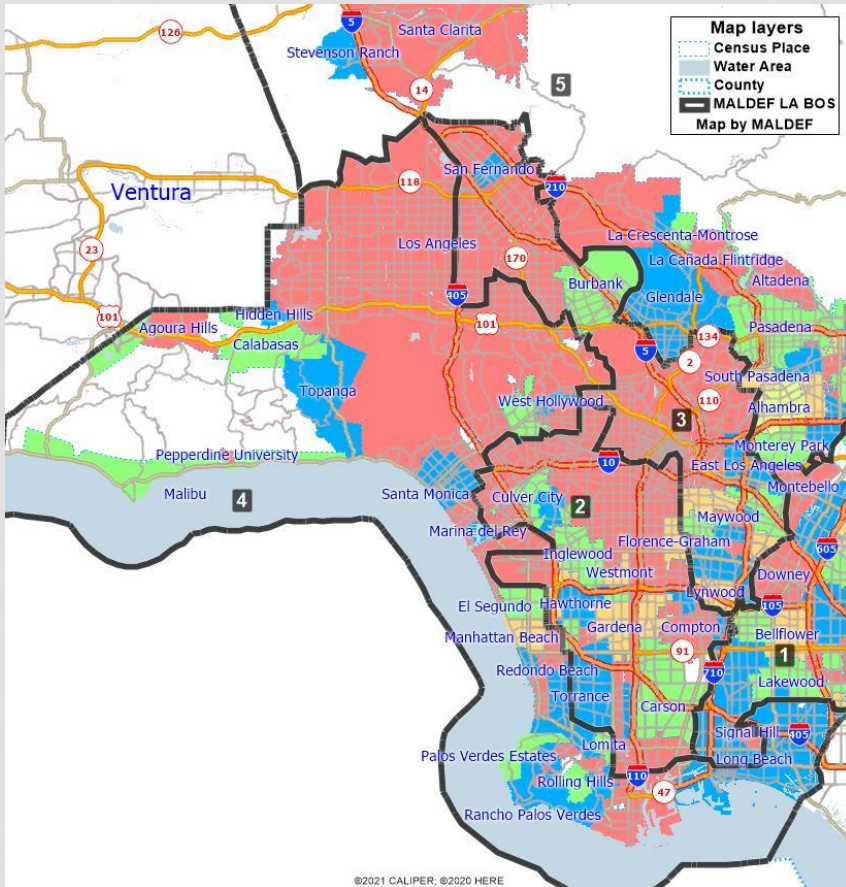
- **Total Population: 1,993,807**
  - **Deviation: -15,781**
  - **%Deviation: -0.79%**
  - **%Latino CVAP: 39.69%**
  - **%Black CVAP-DOJ: 29.74%**
  - **%Asian CVAP-DOJ: 10.66%**
  - **%Native American CVAP-DOJ: 0.33%**
  - **%NL-White CVAP: 18.15%**
- 
- **Latino Influence District**
  - **Black Opportunity District**
- 
- **Cities/Communities:**
    - **South Los Angeles County**
    - **Inglewood, Hawthorne**
    - **Compton, Watts, Willowbrook**
    - **Carson, Wilmington, Gardena, East Torrance**
      - **Torrance split similar to AAAJ split for US Congress, respect Torrance/Gardena COI**

# MALDEF BOS 5



- **Total Population:** 1,993,040
  - **Deviation:** -16,548
  - **%Deviation:** -0.82%
  - **%Latino CVAP:** 29.59%
  - **%Black CVAP-DOJ:** 6.99%
  - **%Asian CVAP-DOJ:** 24.33%
  - **%Native American CVAP-DOJ:** 0.68%
  - **%NL-White CVAP:** 37.72%
- 
- **Latino Influence District**
  - **Asian Influence District**
- 
- **Cities/Communities:**
    - Antelope Valley
    - Santa Clarita, Tujunga/Sunland
    - Glendale, Pasadena
    - West San Gabriel Valley
    - Southeast San Gabriel Valley

# MALDEF BOS 4



- **Total Population:** 2,033,011
  - **Deviation:** 23,423
  - **%Deviation:** +1.17%
  - **%Latino CVAP:** 18.50%
  - **%Black CVAP-DOJ:** 5.51%
  - **%Asian CVAP-DOJ:** 12.67%
  - **%Native American CVAP-DOJ:** 0.66%
  - **%NL-White CVAP:** 62.02%
- 
- **Cities/Communities:**
    - West San Fernando Valley and West County
    - Coastal Communities/Cities
    - Palos Verdes Peninsula
    - San Pedro and Southeast Long Beach
    - Catalina Island



# QUEST FOR A 2<sup>ND</sup> LATINO OPPORTUNITY DISTRICT

- Background
  - 1989 - MALDEF won its case to create the first Latino opportunity district under the Federal Voting Rights Act
  - 2011 – The Latino community had grown to enough for a second Latino opportunity district; Latinos had grown to about 32.6% of the citizen voting age population.
    - **The Board of Supervisors denied the opportunity despite massive public participation**



Photo Credit: LA Times

Q & A