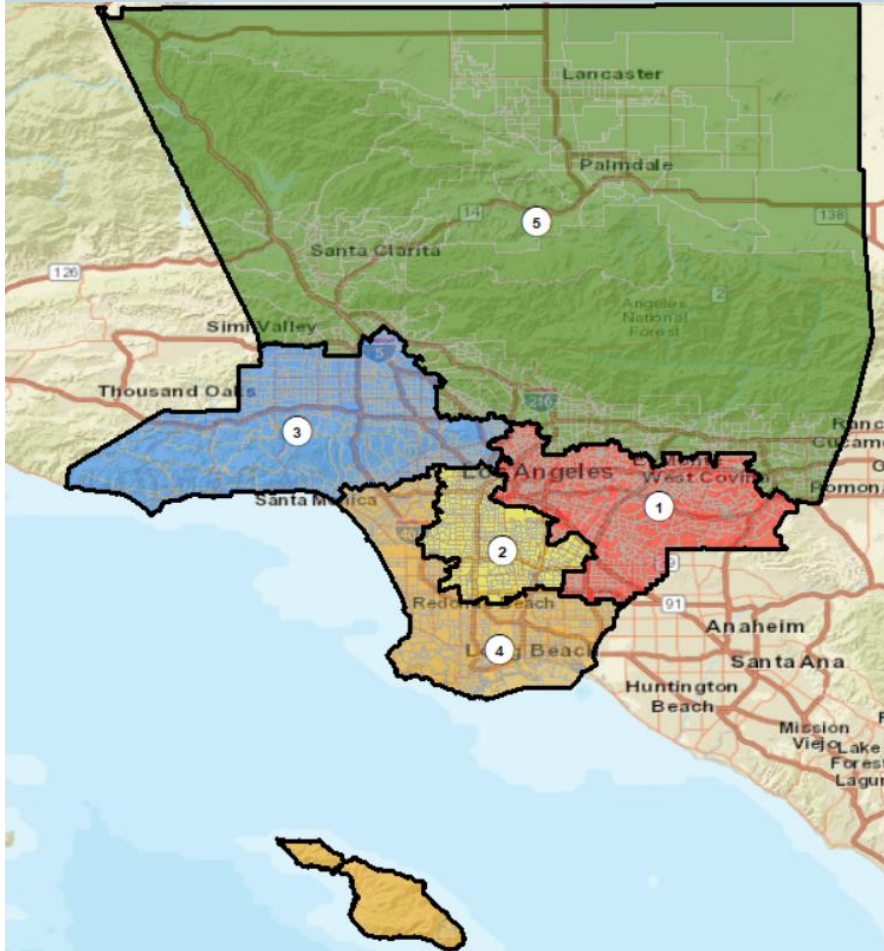


## Option B: *Emphasize COI*

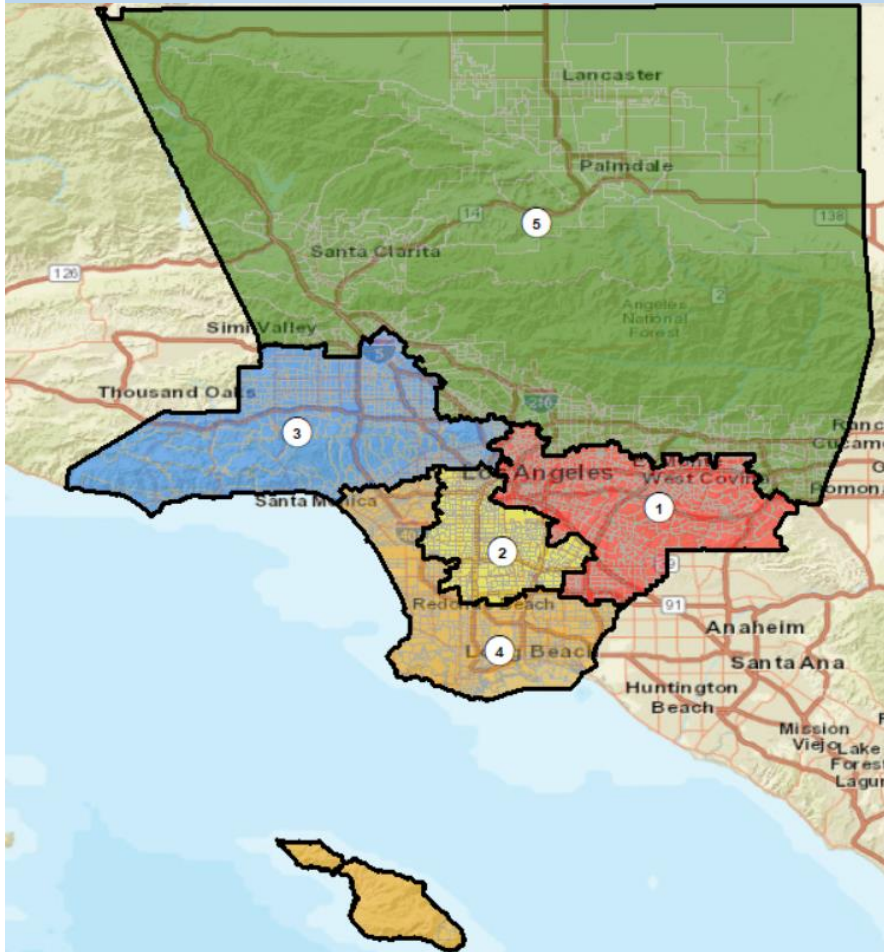


## Explanation of Option B

Presentation to the County of LOS ANGELES  
CITIZENS REDISTRICTING COMMISSION  
by Brian Stecher

*Maps and population statistics provided by  
ARCBridge Consulting & Training Inc.*

## Option B: *Emphasize COI*

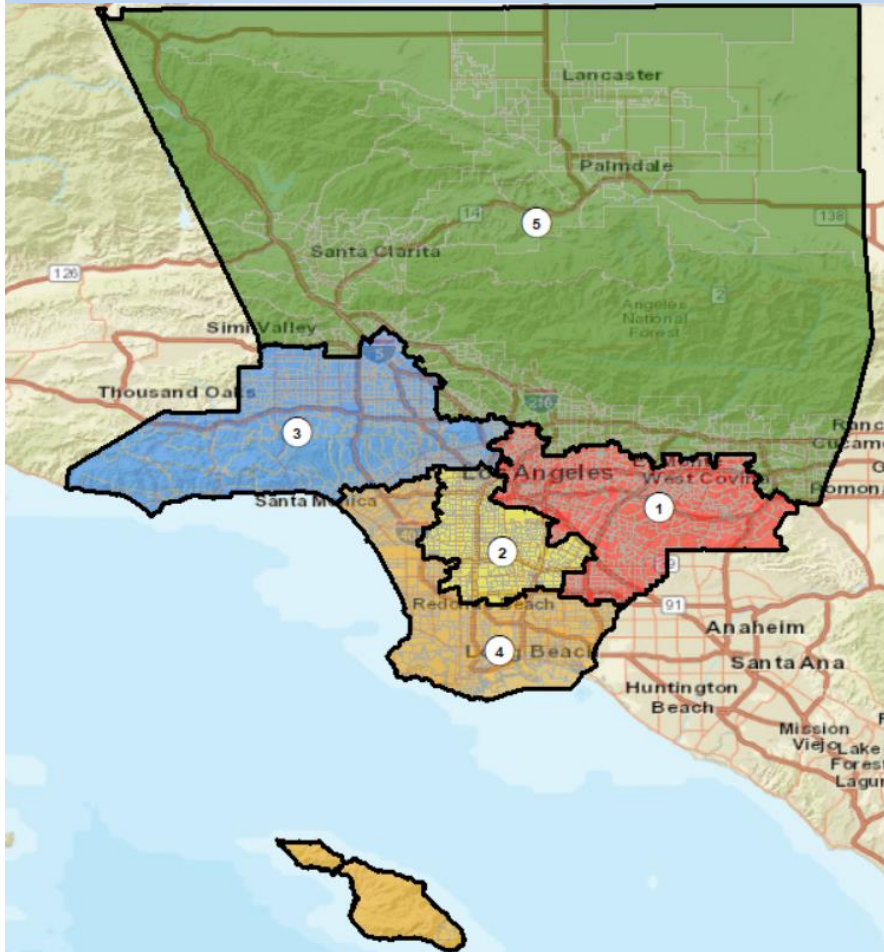


Approach: *Strongly Reflect Communities of Interest As Described at 12 Public Hearings*

### Strengths

- District populations are reasonable equal
  - Max deviation 4.57%, leaves room for changes
- Reflects LA County's racial, ethnic and language distributions
  - 2 Majority-minority districts (Total and CVAP)
- Keeps most COIs together
  - Splits fewest CRC-identified COI
- Keeps most cities/unincorporated areas together
  - Splits few CSAs and NCs
- Creates districts that are compact and recognizable
  - 4 of 5 districts meet P-P compactness test

## Option B: *Emphasize COI*

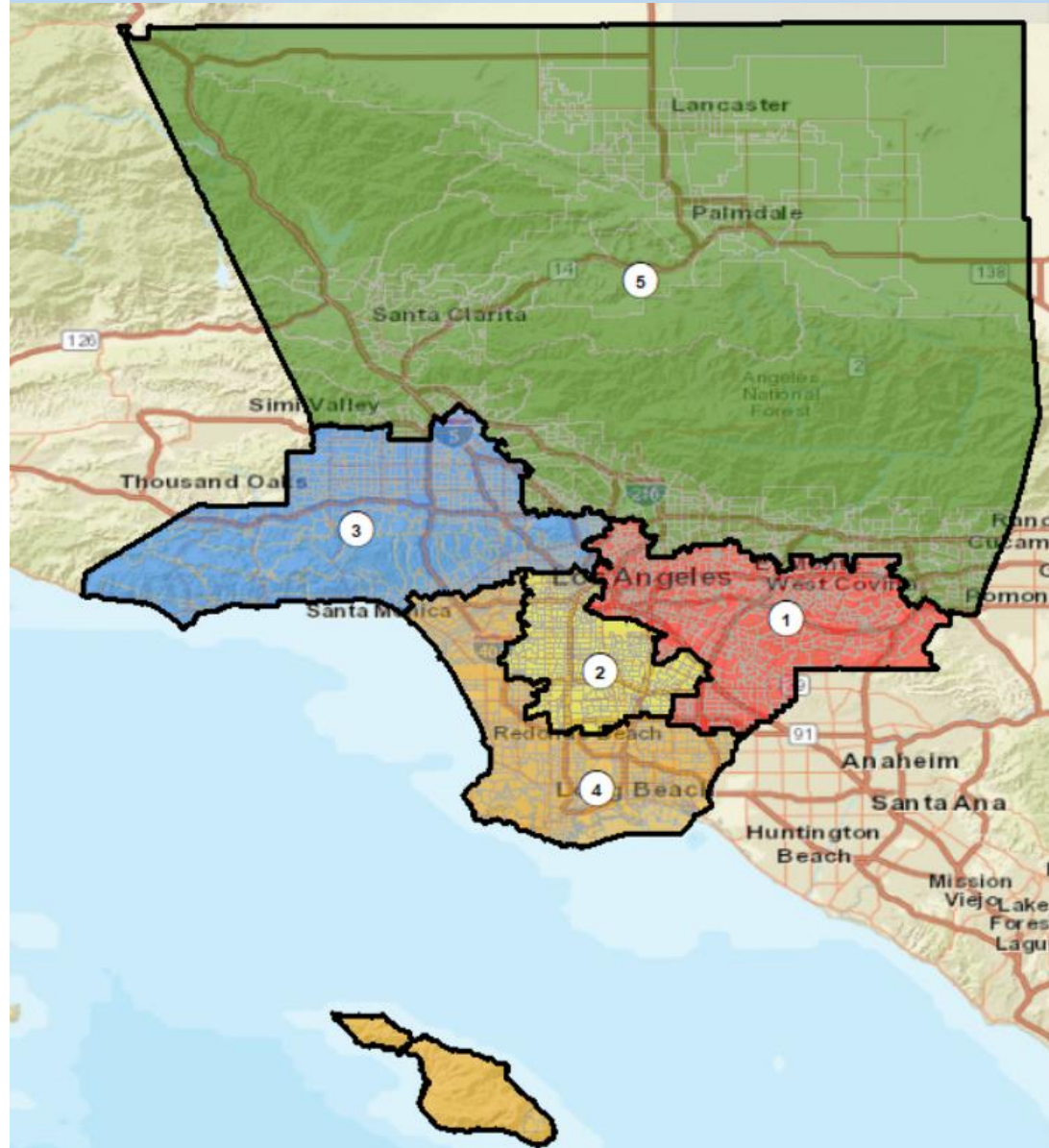


Approach: *Strongly Reflect Communities of Interest As Described at 12 Public Hearings*

### Weakness

- Needs fine tuning
  - Careful checking of boundaries at a fine level of detail (e.g., Santa Monica, Burbank are split).
  - Input from public and Commissioners can improve these map details

# Option B: *Emphasize COI*



## Income Below Poverty Level Past 12 Months

District 1	District 2	District 3	District 4	District 5
13.7%	22.8%	14.0%	11.8%	11.8%

## Income Above \$150K

District 1	District 2	District 3	District 4	District 5
14.1%	7.4%	21.4%	23.4%	21.7%

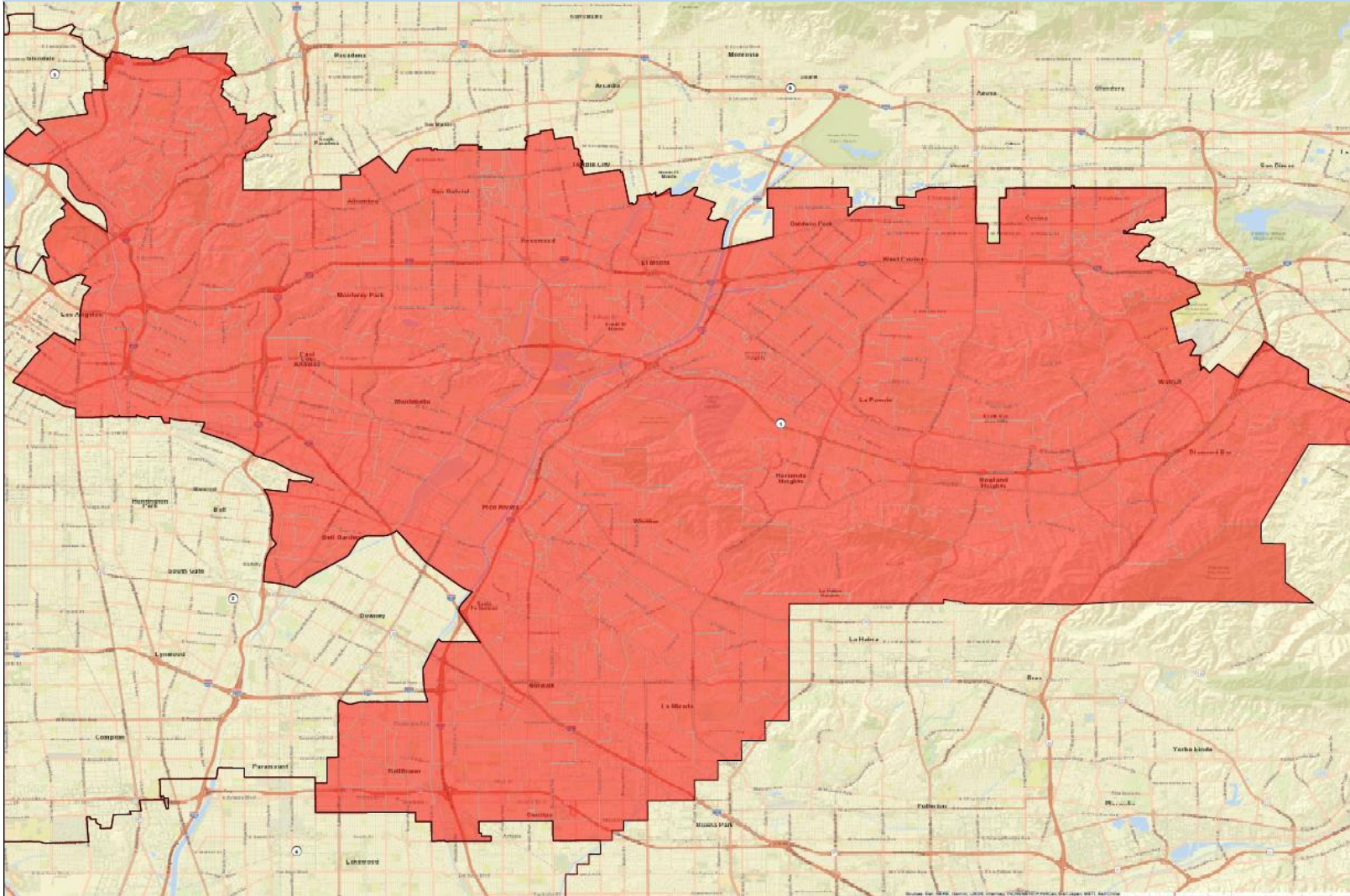
## Primary Home Language: English Only

District 1	District 2	District 3	District 4	District 5
31.1%	28.9%	46.3%	57.0%	55.4%

## No High School Diploma

District 1	District 2	District 3	District 4	District 5
25.4%	35.6%	15.8%	13.4%	14.7%

# Option B: District 1

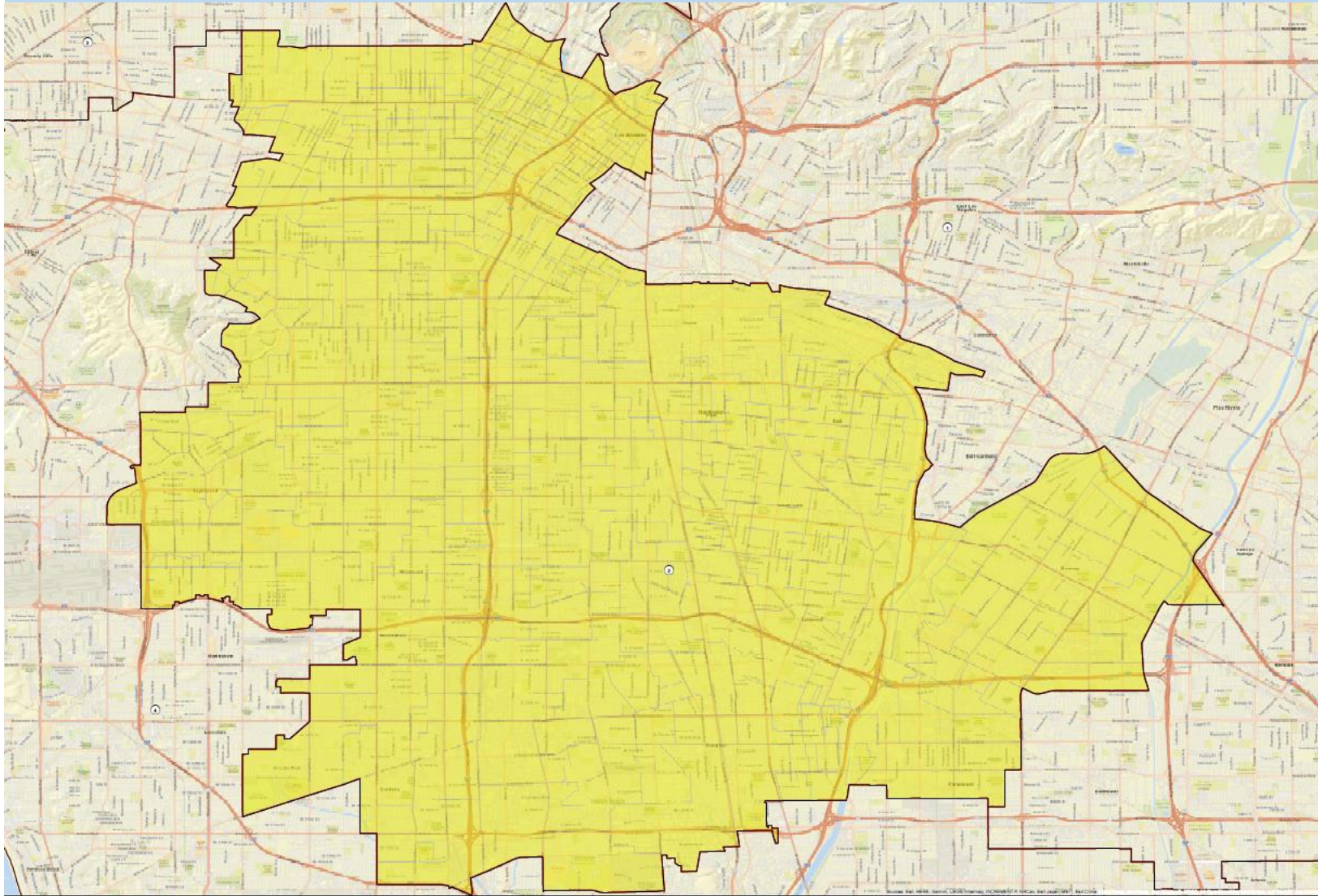


District 1	Total Pop	VAP	CVAP
LATINO	60.69%	57.76%	55.05%
WHITE	10.08%	11.35%	15.09%
BLACK	2.58%	2.72%	3.37%
ASIAN	25.07%	26.66%	25.45%
OTHER	0.58%	0.52%	1.04%

## Major Areas:

- San Gabriel Valley (excluding Pomona Valley)
- East LA, Northeast LA & Southeast LA

# Option B: District 2

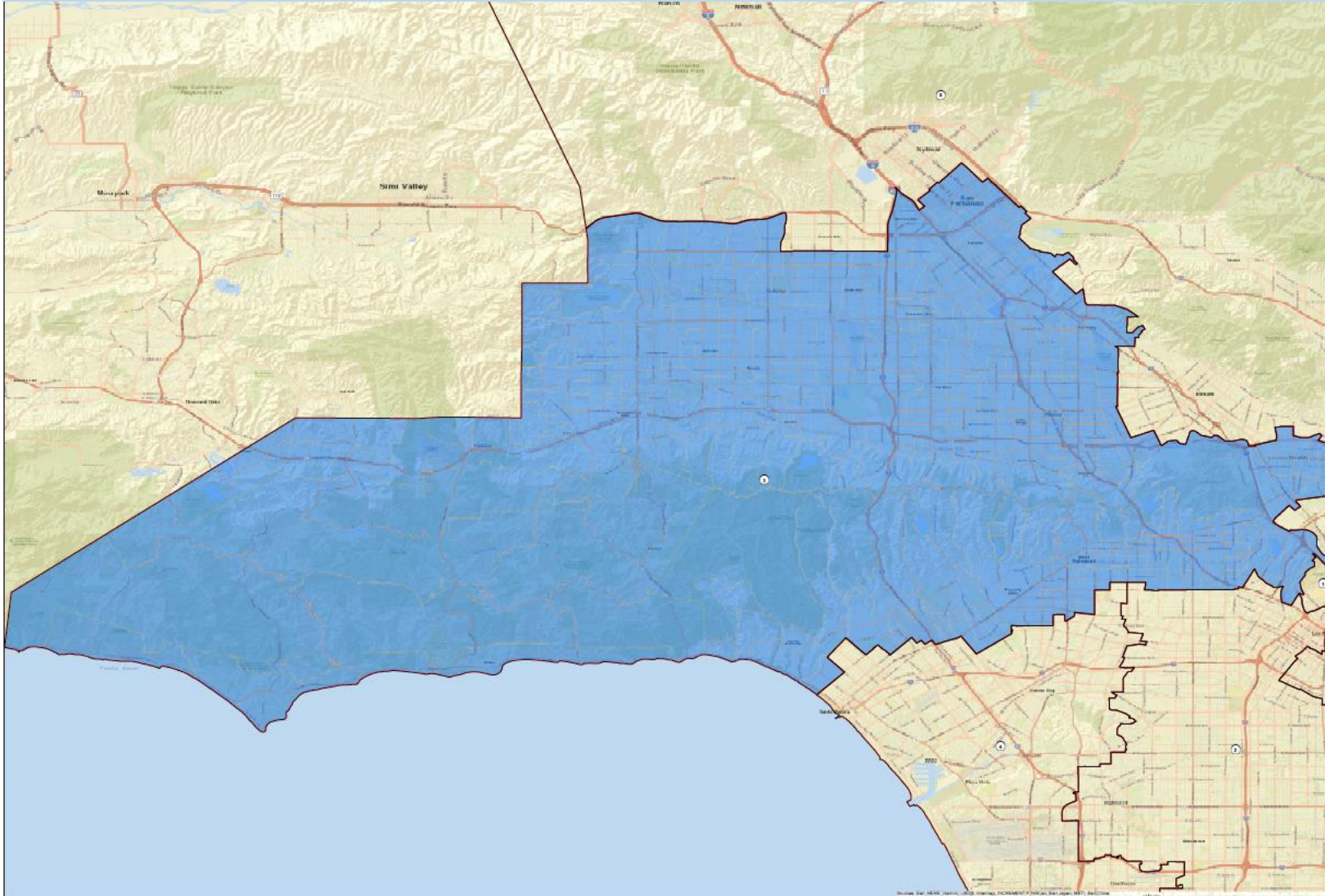


District 2	Total Pop	VAP	CVAP
LATINO	66.93%	63.61%	54.15%
WHITE	5.96%	6.92%	9.19%
BLACK	17.05%	18.07%	26.57%
ASIAN	7.98%	9.36%	8.86%
OTHER	0.73%	0.67%	1.23%

## Major Areas

- Wilshire Center (Koreatown)
- Downtown (portions)
- South Central

# Option B: District 3

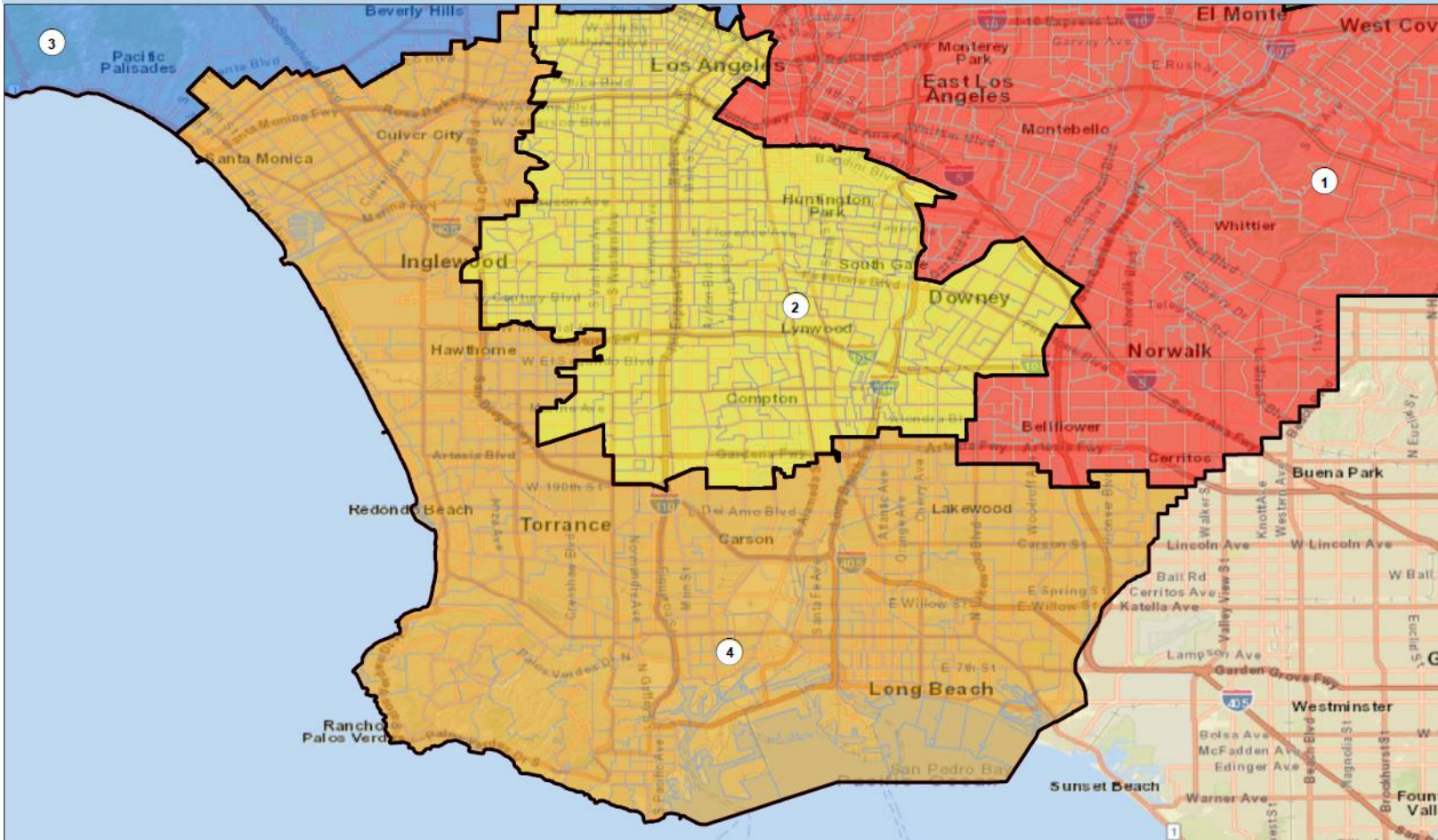


District 3	Total Pop	VAP	CVAP
LATINO	36.94%	34.17%	28.50%
WHITE	43.58%	45.99%	53.38%
BLACK	4.45%	4.58%	5.17%
ASIAN	12.54%	12.91%	11.81%
OTHER	1.24%	1.16%	1.13%

## Major Areas:

- San Fernando Valley (West of I-5)
- Santa Monica Mountains watershed
- Westside (Northern portion)

# Option B: District 4



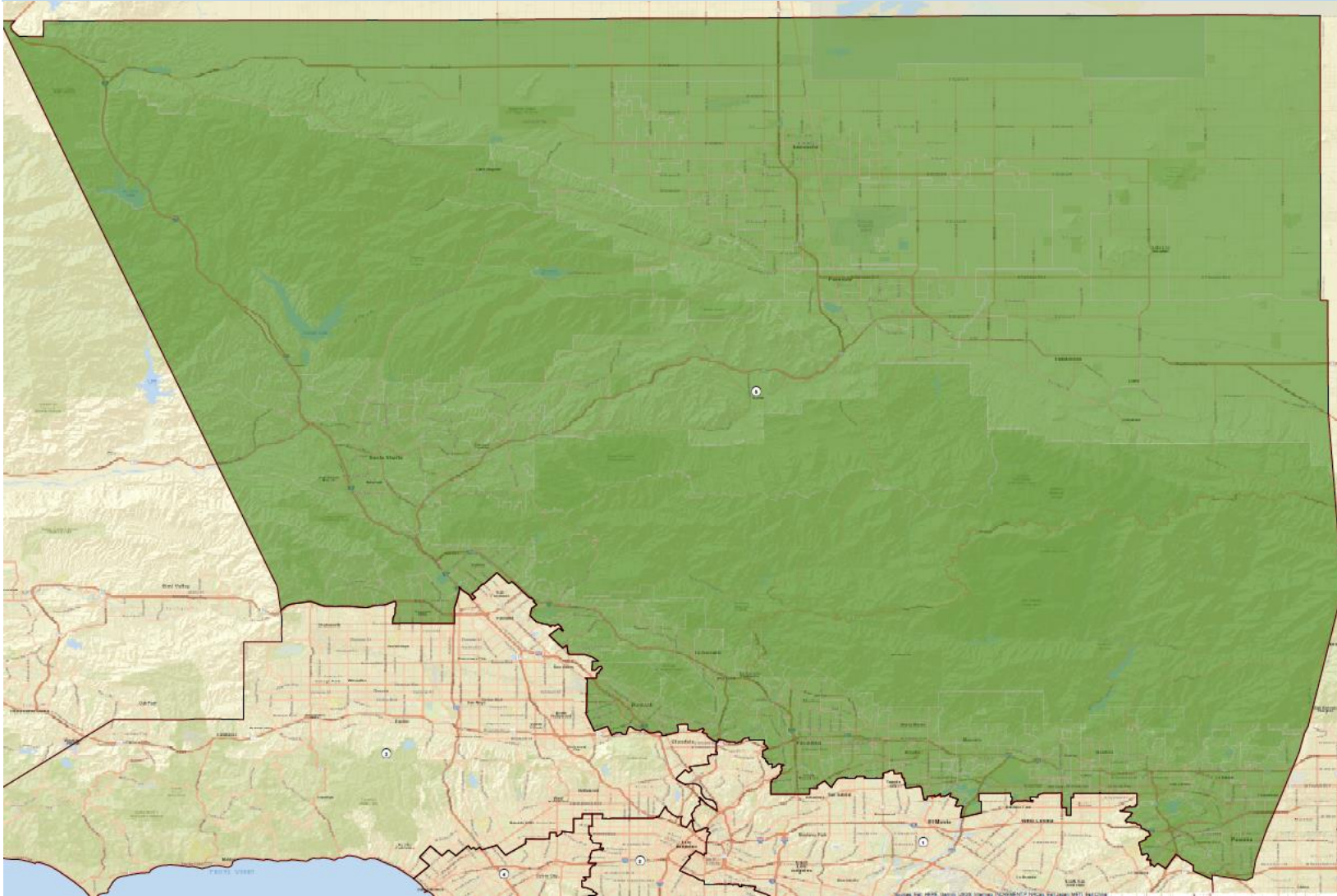
District 4	Total Pop	VAP	CVAP
LATINO	33.62%	30.84%	26.30%
WHITE	34.70%	37.44%	43.22%
BLACK	10.14%	10.15%	12.02%
ASIAN	17.86%	18.07%	16.43%
OTHER	1.35%	1.30%	2.03%

## Major Areas:

- Beach Cities (below SM Mountains)
- Long Beach
- Harbor Cities
- Catalina Island



# Option B: District 5

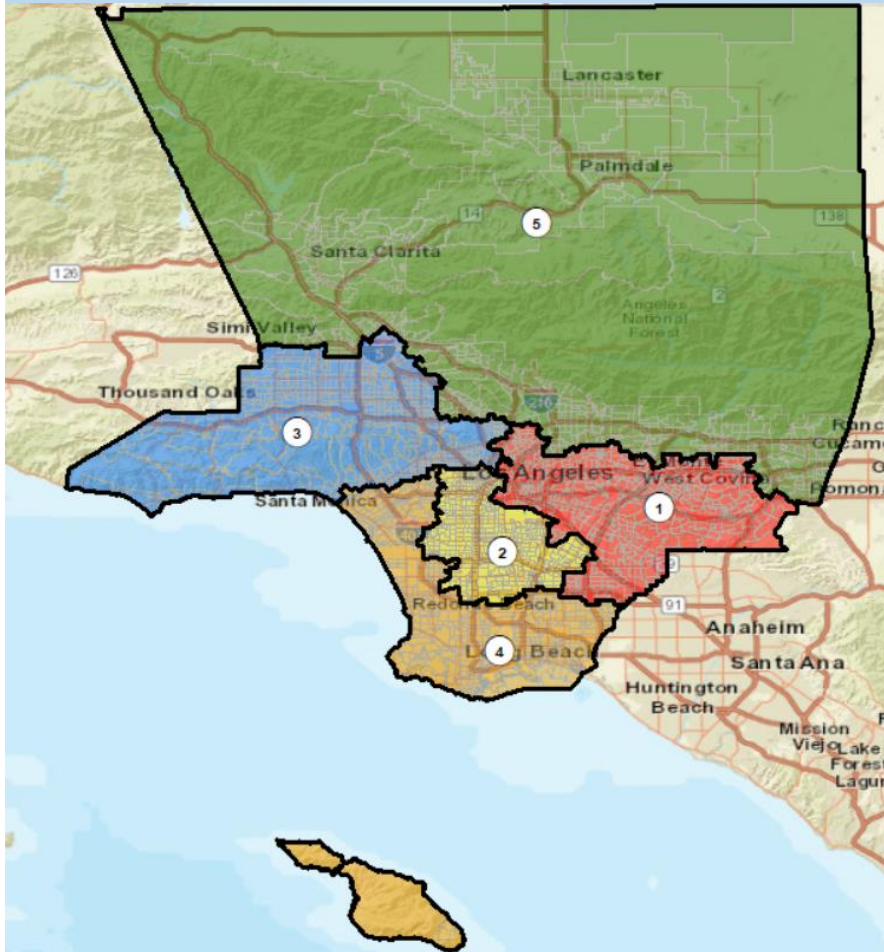


District 5	Total Pop	VAP	CVAP
LATINO	40.93%	37.92%	33.31%
WHITE	34.20%	37.12%	43.72%
BLACK	6.83%	6.66%	7.50%
ASIAN	15.40%	15.74%	13.96%
OTHER	1.02%	0.96%	1.50%

## Major Areas:

- North County
- Burbank, Glendale, Pasadena
- Foothill Communities of San Gabriel Mountains
- Pomona Valley

## Option B: *Emphasize COI*



Motivation: *Strongly Reflect Communities of Interest As Described at 12 Public Hearings*

Option B is the best choice because it:

- Creates districts that reflect the recognized major Communities of Interest in Los Angeles County
- Empowers minority and majority voters to elect representatives of their choosing
- Creates districts with geographic integrity and familiarity, i.e., districts that people recognize as significant parts of LA County