



# LOS ANGELES COUNTY **REDISTRICTING 2021**

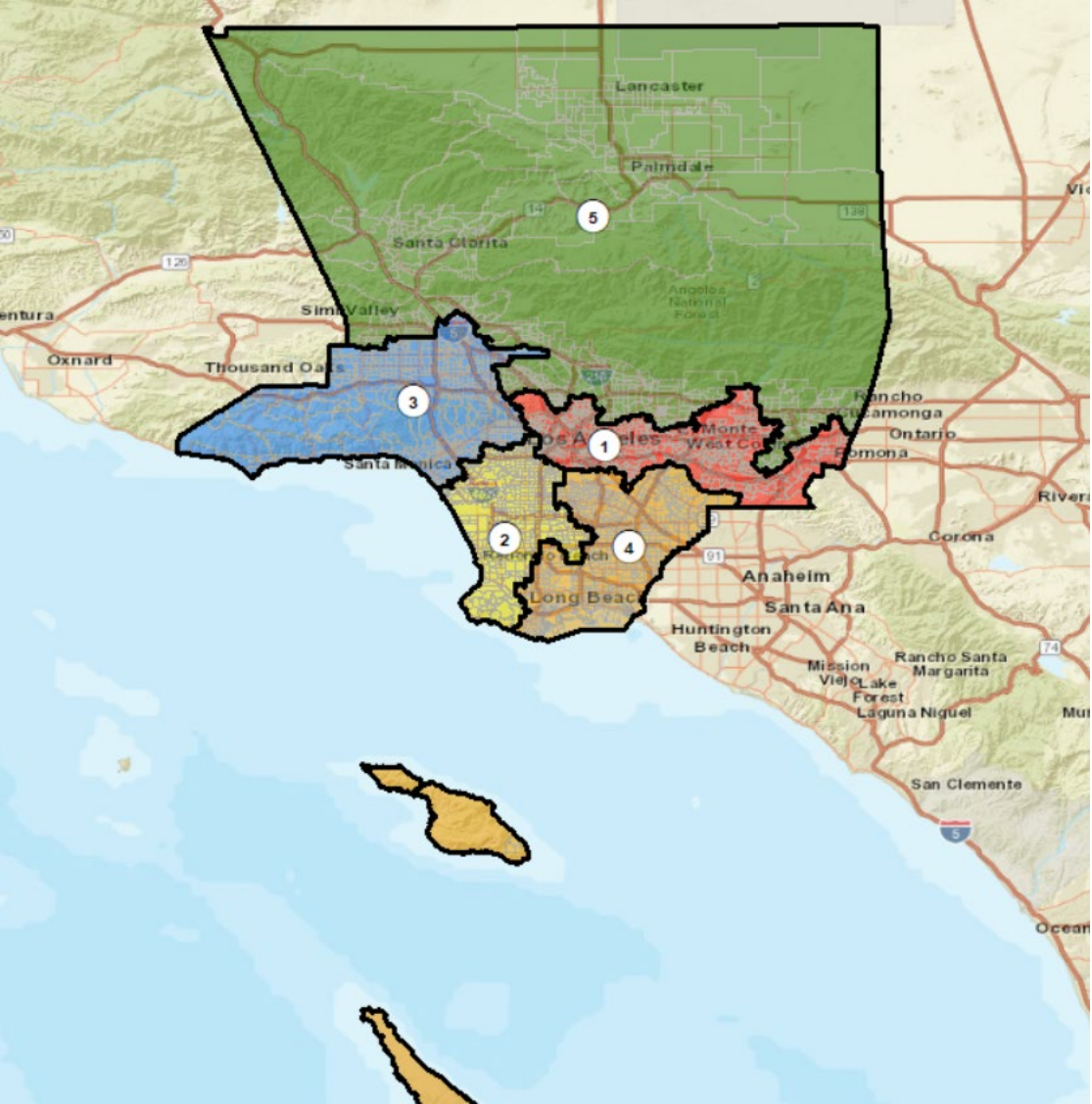
ANALYSIS OF Draft Plan  
Name: Draft Map G –11-29-21

Presentation to the County of LOS ANGELES  
CITIZENS REDISTRICTING COMMISSION

ARCBridge Consulting & Training Inc.  
[www.arcbridge.com](http://www.arcbridge.com)



# Plan Name: Draft Map G

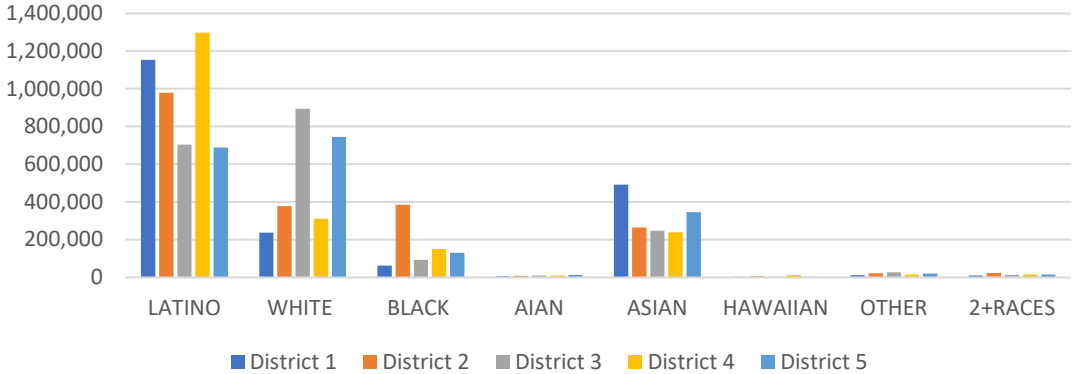


### Maximum Deviation – 5.03%

Name	Total Pop	Deviation	Deviation %
1	1,976,922	-32,663	-1.63%
2	2,065,338	55,753	2.77%
3	1,991,406	-18,179	-0.90%
4	2,049,948	40,363	2.01%
5	1,964,312	-45,273	-2.25%

District	Latino	%	White	%	Black	%	Asian	%
1	1,153,900	58.37%	237,635	12.02%	61,835	3.13%	491,515	24.86%
2	977,903	47.35%	377,725	18.29%	385,729	18.68%	263,794	12.77%
3	703,773	35.34%	894,414	44.91%	92,970	4.67%	247,601	12.43%
4	1,297,009	63.27%	310,876	15.17%	151,383	7.38%	238,635	11.64%
5	689,118	35.08%	745,291	37.94%	130,914	6.66%	346,547	17.64%

Ethnic and Racial Information by District



# CENSUS 2020 POPULATION AND CITIZEN VOTING AGE POPULATION

TOTAL POPULATION

	District 1	District 2	District 3	District 4	District 5
LATINO	1,153,900	977,903	703,773	1,297,009	689,118
LATINO %	58.37%	47.35%	35.34%	63.27%	35.08%
WHITE	237,635	377,725	894,414	310,876	745,291
WHITE%	12.02%	18.29%	44.91%	15.17%	37.94%
BLACK	61,835	385,729	92,970	151,383	130,914
BLACK %	3.13%	18.68%	4.67%	7.38%	6.66%
AIAN	7,372	7,773	9,962	10,254	13,898
AIAN %	0.37%	0.38%	0.50%	0.50%	0.71%
ASIAN	491,515	263,794	247,601	238,635	346,547
ASIAN %	24.86%	12.77%	12.43%	11.64%	17.64%
HAWAIIAN	2,402	5,836	2,931	11,449	3,021
HAWAIIAN %	0.12%	0.28%	0.15%	0.56%	0.15%
OTHER	12,511	22,726	26,947	15,734	20,541
OTHER %	0.63%	1.10%	1.35%	0.77%	1.05%
2+RACES	9,752	23,852	12,808	14,608	14,982
2+RACES%	0.49%	1.15%	0.64%	0.71%	0.76%
TOTAL	1,976,922	2,065,338	1,991,406	2,049,948	1,964,312

VOTING AGE POPULATION

District 1	District 2	District 3	District 4	District 5
873,555	710,942	534,846	959,835	500,517
54.97%	43.95%	32.62%	60.13%	32.27%
215,619	326,790	776,106	275,829	633,783
13.57%	20.20%	47.33%	17.28%	40.86%
53,860	313,263	78,790	120,842	99,625
3.39%	19.37%	4.81%	7.57%	6.42%
6,247	6,438	8,597	8,919	11,693
0.39%	0.40%	0.52%	0.56%	0.75%
421,543	220,548	208,853	200,212	277,487
26.53%	13.63%	12.74%	12.54%	17.89%
1,949	4,541	2,368	9,035	2,380
0.12%	0.28%	0.14%	0.57%	0.15%
9,155	16,889	20,807	11,485	15,373
0.58%	1.04%	1.27%	0.72%	0.99%
7,117	18,105	9,237	10,147	10,386
0.45%	1.12%	0.56%	0.64%	0.67%
1,589,045	1,617,516	1,639,604	1,596,304	1,551,244

CITIZEN VOTING AGE POPULATION

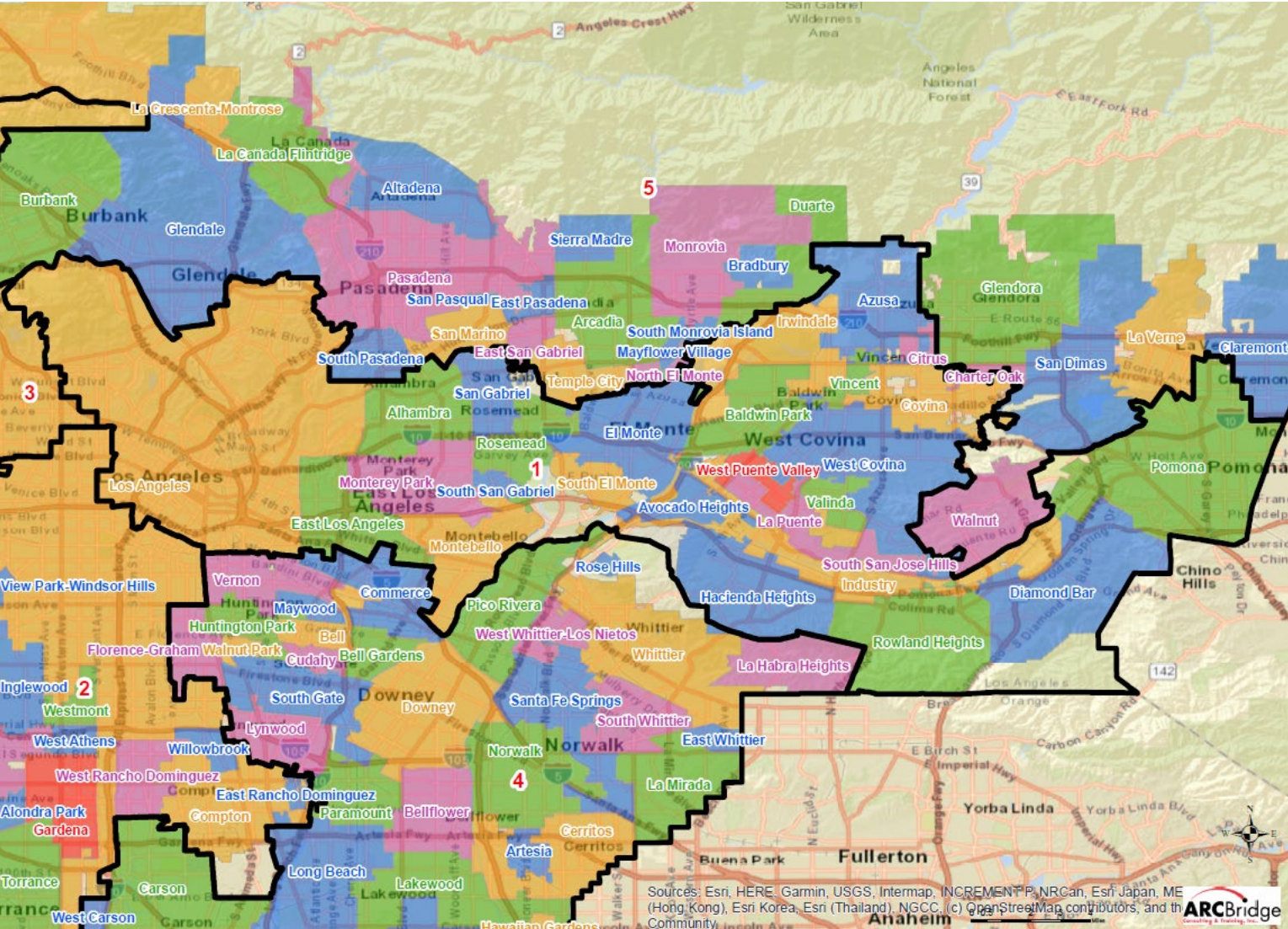
District 1	District 2	District 3	District 4	District 5
625,684	417,641	359,302	678,530	370,611
51.58%	34.62%	27.00%	53.63%	28.51%
208,763	302,859	731,236	290,885	609,937
17.21%	25.11%	54.95%	22.99%	46.91%
50,110	316,117	72,936	116,700	94,278
4.13%	26.21%	5.48%	9.22%	7.25%
N/A	N/A	N/A	N/A	N/A
N/A	N/A	N/A	N/A	N/A
314,890	150,740	151,777	158,140	206,222
25.96%	12.50%	11.41%	12.50%	15.86%
N/A	N/A	N/A	N/A	N/A
N/A	N/A	N/A	N/A	N/A
13,514	18,860	15,508	20,960	19,111
1.11%	1.56%	1.17%	1.66%	1.47%
N/A	N/A	N/A	N/A	N/A
N/A	N/A	N/A	N/A	N/A
1,212,961	1,206,217	1,330,759	1,265,215	1,300,159

## NUMBER OF SPLIT CITIES/CSAS, LA CITY NEIGHBORHOOD COUNCILS, COIS

Max Deviation	Number of Districts with Polsby Popper-Compactness Score of >.2	# Majority Minority Districts		Splits		Community of Interest Models (COI)		
		Based on Total Population	Based on CVAP	Consolidated Statistical Areas (CSAs) # CSAs	Neighborhood Councils	COI A	COI B	COI C
5.03%	3	2	2	3	20	9	7	9

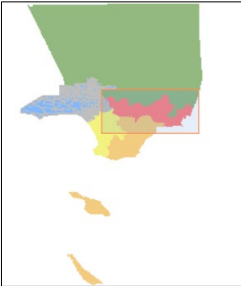
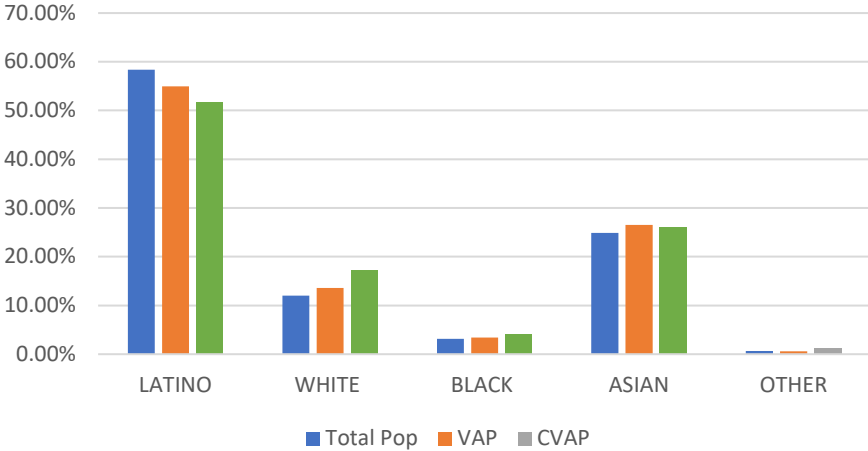


# District 1



Name	Total Pop	Deviation	Deviation %
1	1,976,922	-32,663	-1.63%

Total Pop, VAP, CVAP

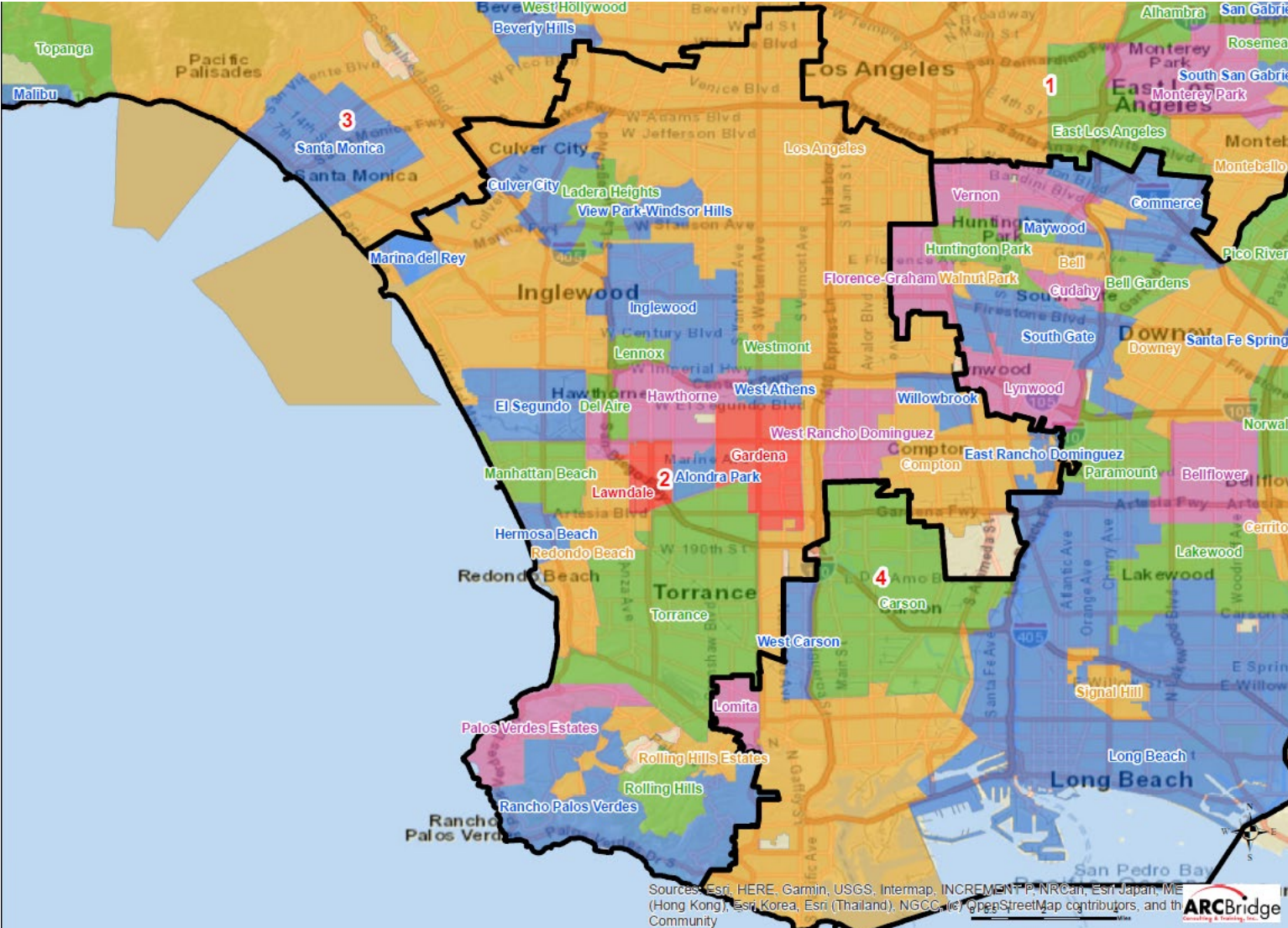


District 1	Total Pop	VAP	CVAP
LATINO	58.37%	54.97%	51.58%
WHITE	12.02%	13.57%	17.21%
BLACK	3.13%	3.39%	4.13%
ASIAN	24.86%	26.53%	25.96%
OTHER	0.63%	0.58%	1.11%

Sources: Esri, HERE, Garmin, USGS, Intermap, INCREMENT P, NRCan, Esri Japan, ME (Hong Kong), Esri Korea, Esri (Thailand), NGCC, (c) OpenStreetMap contributors, and the Community.

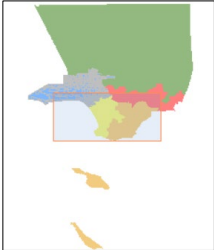
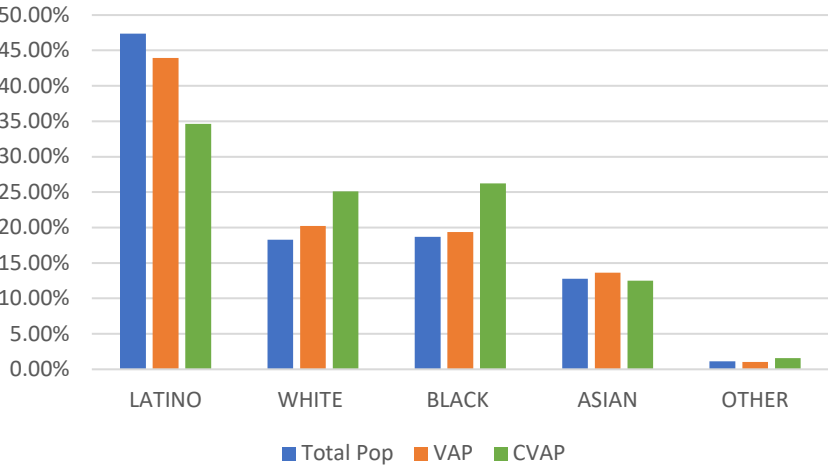


# District 2



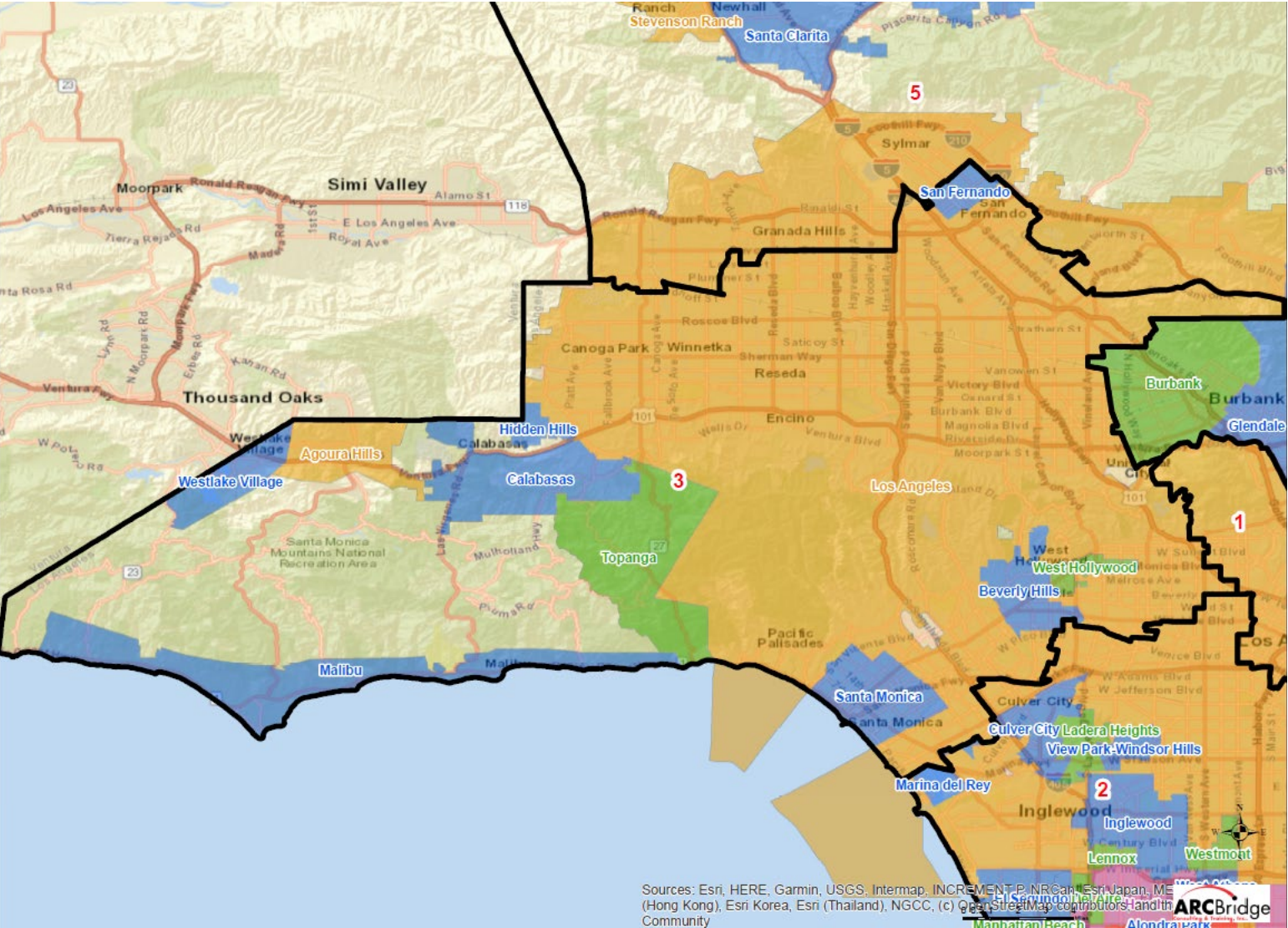
Name	Total Pop	Deviation	Deviation %
2	2,065,338	55,753	2.77%

Total Pop, VAP, CVAP



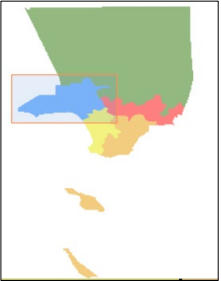
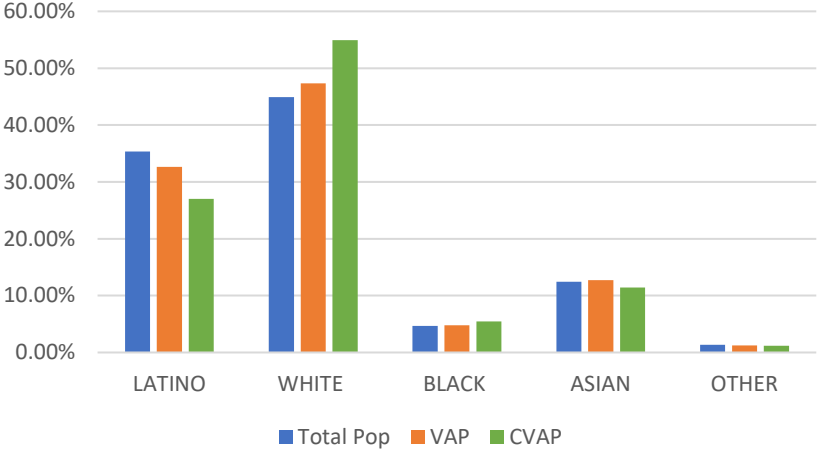
District 2	Total Pop	VAP	CVAP
LATINO	47.35%	43.95%	34.62%
WHITE	18.29%	20.20%	25.11%
BLACK	18.68%	19.37%	26.21%
ASIAN	12.77%	13.63%	12.50%
OTHER	1.10%	1.04%	1.56%

# District 3



Name	Total Pop	Deviation	Deviation %
3	1,991,406	-18,179	-0.90%

Total Pop, VAP, CVAP

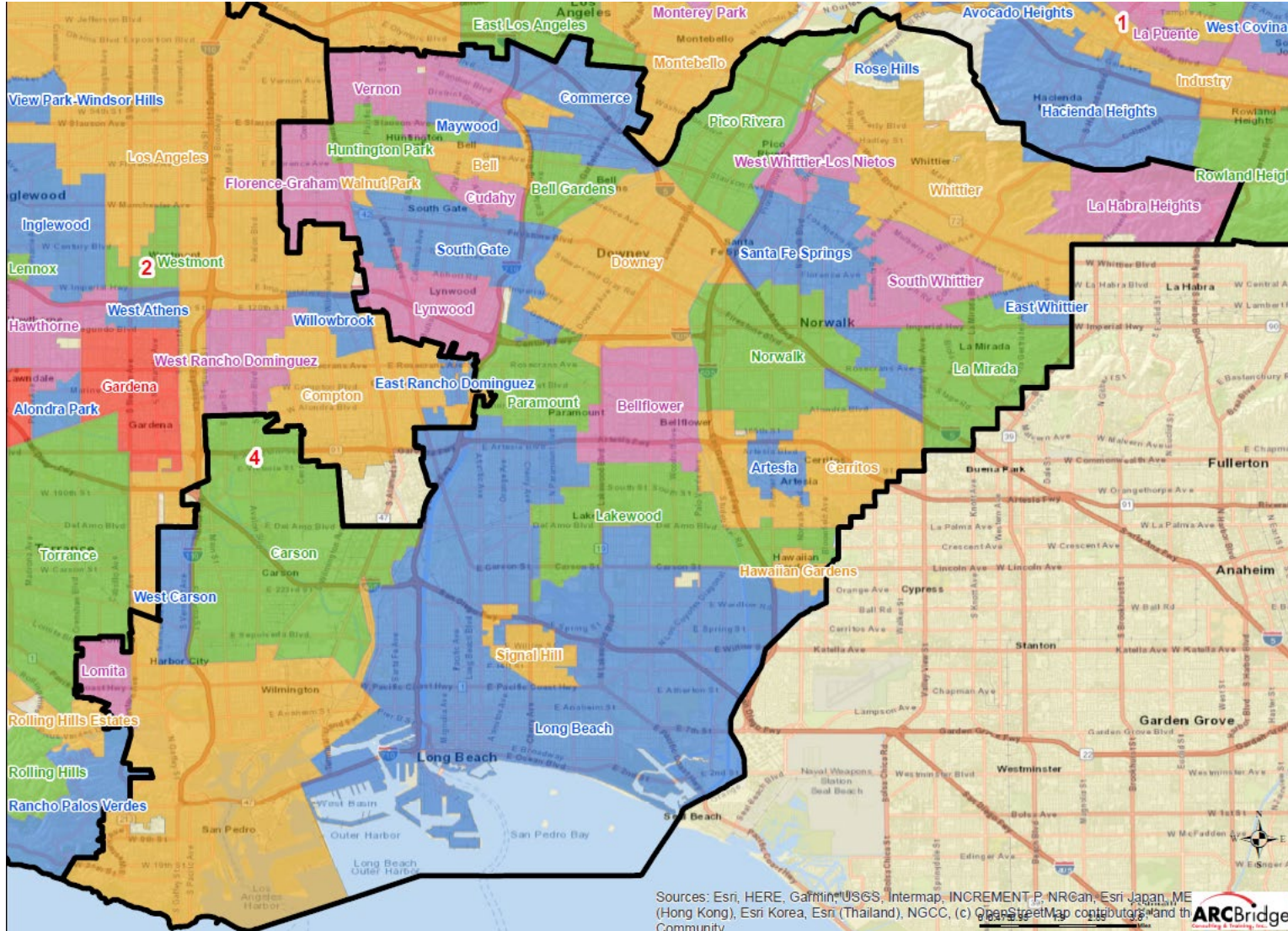


District 3	Total Pop	VAP	CVAP
LATINO	35.34%	32.62%	27.00%
WHITE	44.91%	47.33%	54.95%
BLACK	4.67%	4.81%	5.48%
ASIAN	12.43%	12.74%	11.41%
OTHER	1.35%	1.27%	1.17%

Sources: Esri, HERE, Garmin, USGS, Intermap, INCREMENT P, NRCan, Esri Japan, ME (Hong Kong), Esri Korea, Esri (Thailand), NGCC, (c) OpenStreetMap contributors, and the ARC Bridge Community

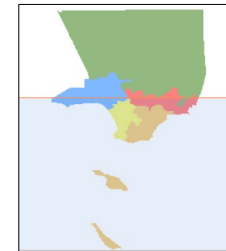
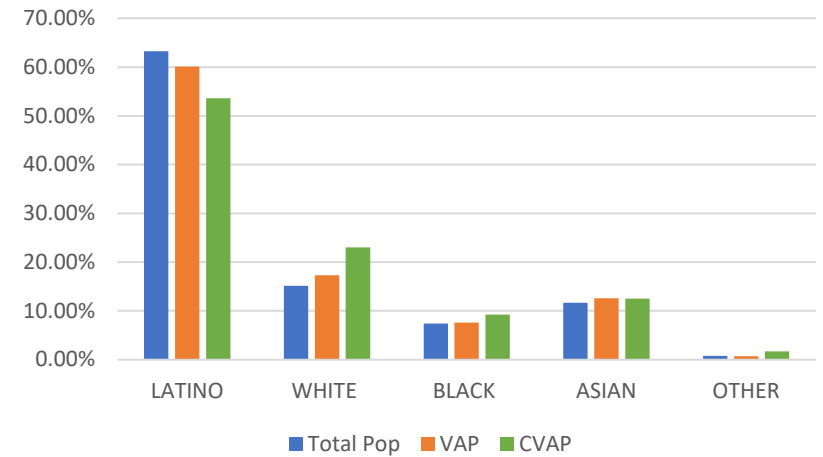


# District 4



Name	Total Pop	Deviation	Deviation %
4	2,049,948	40,363	2.01%

Total Pop, VAP, CVAP

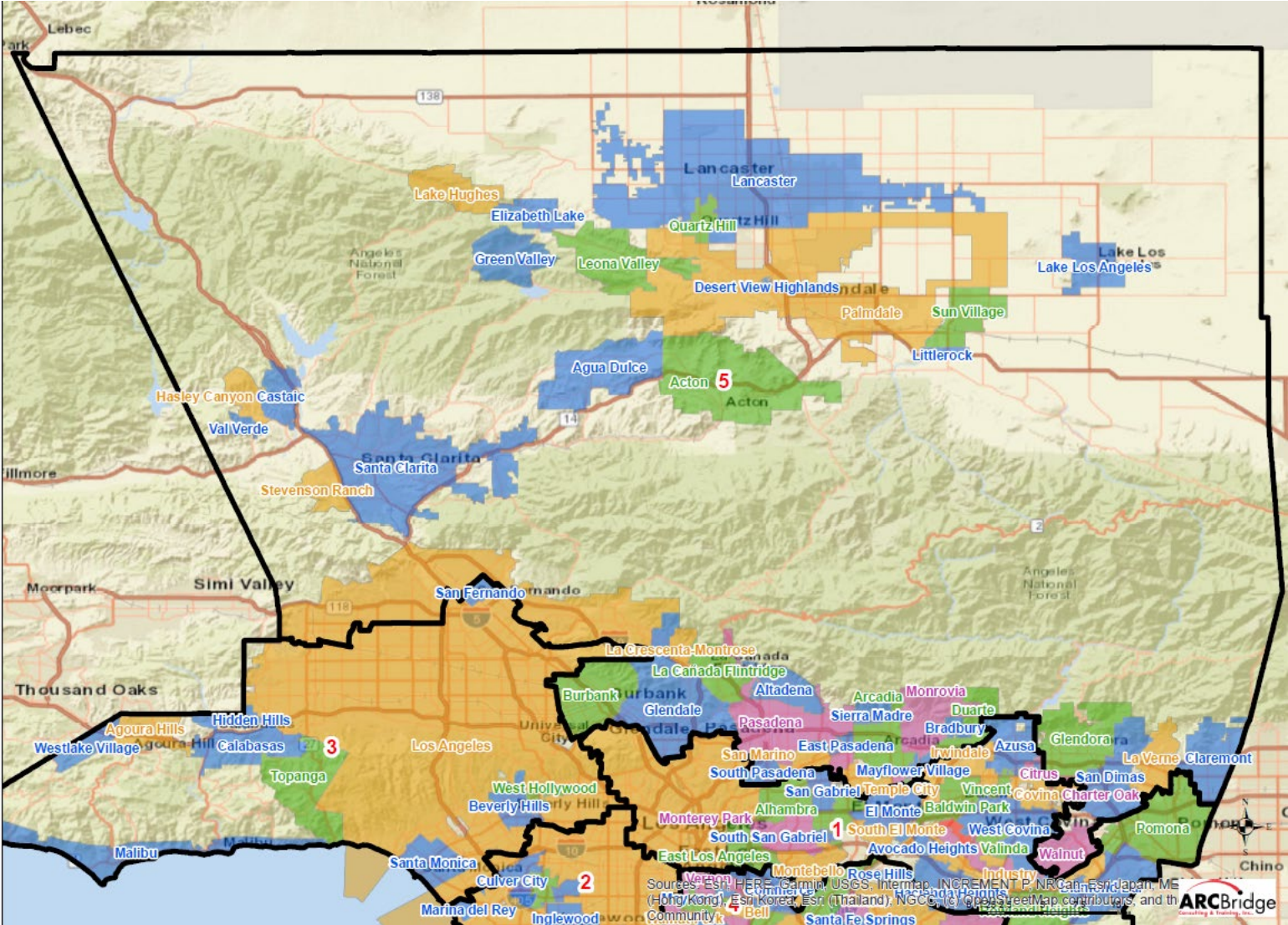


District 4	Total Pop	VAP	CVAP
LATINO	63.27%	60.13%	53.63%
WHITE	15.17%	17.28%	22.99%
BLACK	7.38%	7.57%	9.22%
ASIAN	11.64%	12.54%	12.50%
OTHER	0.77%	0.72%	1.66%

Sources: Esri, HERE, Garmin, USGS, Intermap, INCREMENT P, NRCan, Esri Japan, ME (Hong Kong), Esri Korea, Esri (Thailand), NGCC, (c) OpenStreetMap contributors, and the Community

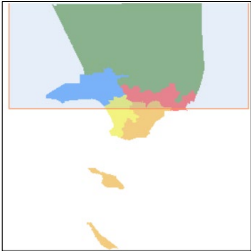
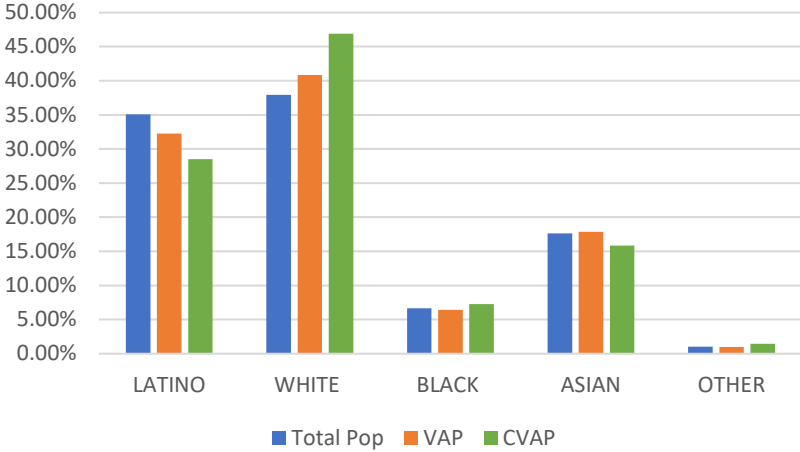


# District 5



Name	Total Pop	Deviation	Deviation %
5	1,964,312	-45,273	-2.25%

Total Pop, VAP, CVAP



District 5	Total Pop	VAP	CVAP
LATINO	35.08%	32.27%	28.51%
WHITE	37.94%	40.86%	46.91%
BLACK	6.66%	6.42%	7.25%
ASIAN	17.64%	17.89%	15.86%
OTHER	1.05%	0.99%	1.47%