



LOS ANGELES COUNTY **REDISTRICTING 2021**

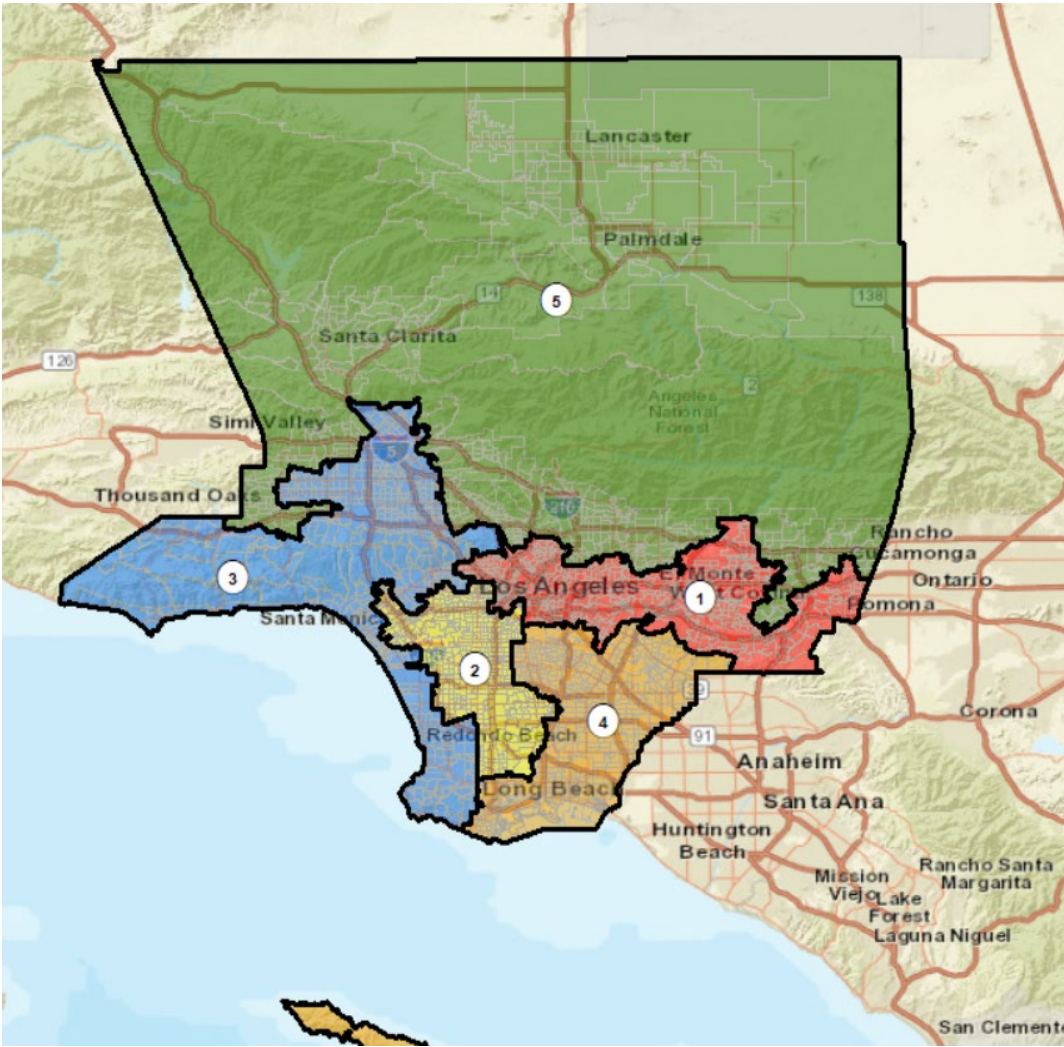
ANALYSIS OF Draft Plan
Name: Draft Map F – Revised 11-16-21

Presentation to the County of LOS ANGELES
CITIZENS REDISTRICTING COMMISSION

ARCBridge Consulting & Training Inc.
www.arcbridge.com



Plan Name: Draft Map F

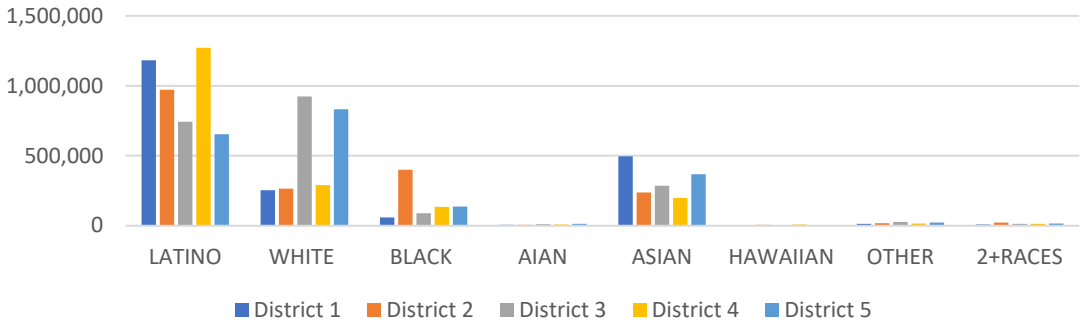


Maximum Deviation – 8.36%

Name	Total Pop	Deviation	Deviation %
1	2,023,952	14,367	0.71%
2	1,931,459	-78,126	-3.89%
3	2,099,541	89,956	4.48%
4	1,943,039	-66,546	-3.31%
5	2,049,935	40,350	2.01%

District	Latino	%	White	%	Black	%	Asian	%
1	1,181,196	58.36%	253,204	12.51%	60,465	2.99%	496,014	24.51%
2	971,909	50.32%	264,689	13.70%	400,280	20.72%	238,464	12.35%
3	742,409	35.36%	924,315	44.02%	88,963	4.24%	286,576	13.65%
4	1,271,300	65.43%	291,398	15.00%	135,764	6.99%	198,102	10.20%
5	654,889	31.95%	832,335	40.60%	137,359	6.70%	368,936	18.00%

Ethnic and Racial Information by District



CENSUS 2020 POPULATION AND CITIZEN VOTING AGE POPULATION

TOTAL POPULATION

	District 1	District 2	District 3	District 4	District 5
LATINO	1,181,196	971,909	742,409	1,271,300	654,889
LATINO %	58.36%	50.32%	35.36%	65.43%	31.95%
WHITE	253,204	264,689	924,315	291,398	832,335
WHITE%	12.51%	13.70%	44.02%	15.00%	40.60%
BLACK	60,465	400,280	88,963	135,764	137,359
BLACK %	2.99%	20.72%	4.24%	6.99%	6.70%
AIAN	7,365	6,682	11,122	9,581	14,509
AIAN %	0.36%	0.35%	0.53%	0.49%	0.71%
ASIAN	496,014	238,464	286,576	198,102	368,936
ASIAN %	24.51%	12.35%	13.65%	10.20%	18.00%
HAWAIIAN	2,414	6,855	3,861	9,257	3,252
HAWAIIAN %	0.12%	0.35%	0.18%	0.48%	0.16%
OTHER	13,314	19,236	28,419	14,763	22,727
OTHER %	0.66%	1.00%	1.35%	0.76%	1.11%
2+RACES	9,980	23,344	13,876	12,874	15,928
2+RACES%	0.49%	1.21%	0.66%	0.66%	0.78%
TOTAL	2,023,952	1,931,459	2,099,541	1,943,039	2,049,935

VOTING AGE POPULATION

District 1	District 2	District 3	District 4	District 5
895,238	713,238	558,045	937,494	475,680
54.95%	46.59%	32.71%	62.40%	29.27%
230,519	234,941	797,365	258,135	707,167
14.15%	15.35%	46.74%	17.18%	43.51%
52,538	328,829	73,935	106,417	104,661
3.23%	21.48%	4.33%	7.08%	6.44%
6,236	5,592	9,618	8,302	12,146
0.38%	0.37%	0.56%	0.55%	0.75%
425,455	210,172	232,657	165,311	295,048
26.12%	13.73%	13.64%	11.00%	18.15%
1,951	5,458	3,019	7,252	2,593
0.12%	0.36%	0.18%	0.48%	0.16%
9,822	14,621	21,520	10,694	17,052
0.60%	0.96%	1.26%	0.71%	1.05%
7,280	17,970	9,836	8,885	11,021
0.45%	1.17%	0.58%	0.59%	0.68%
1,629,039	1,530,821	1,705,995	1,502,490	1,625,368

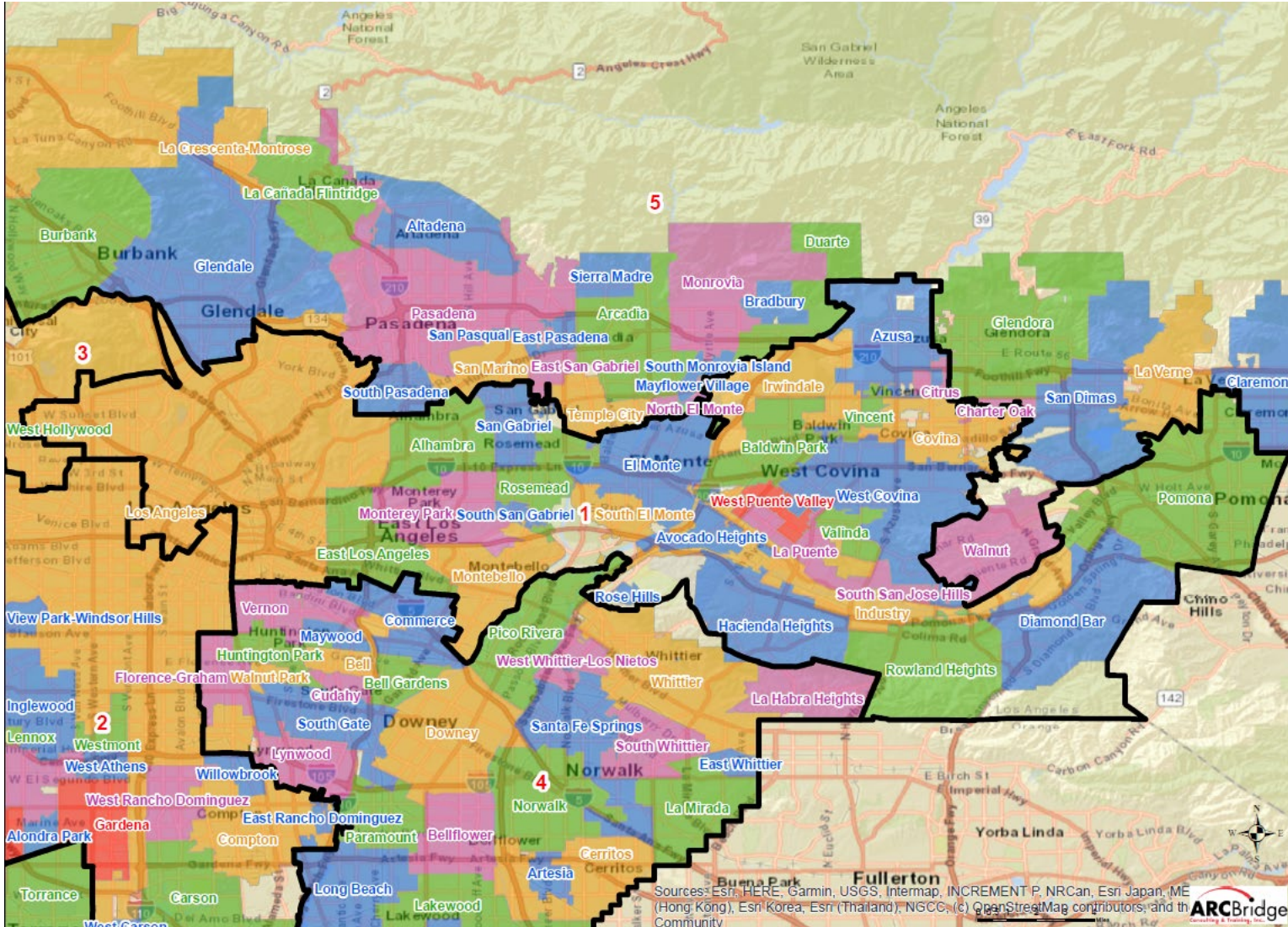
CITIZEN VOTING AGE POPULATION

District 1	District 2	District 3	District 4	District 5
640,115	413,344	384,276	659,686	354,347
51.59%	36.91%	27.40%	55.77%	25.87%
221,059	209,980	760,161	273,324	679,156
17.82%	18.75%	54.21%	23.11%	49.59%
49,137	335,016	66,566	101,259	98,163
3.96%	29.92%	4.75%	8.56%	7.17%
N/A	N/A	N/A	N/A	N/A
N/A	N/A	N/A	N/A	N/A
316,687	141,578	174,408	131,183	217,913
25.53%	12.64%	12.44%	11.09%	15.91%
N/A	N/A	N/A	N/A	N/A
N/A	N/A	N/A	N/A	N/A
13,658	19,889	16,919	17,467	20,020
1.10%	1.78%	1.21%	1.48%	1.46%
N/A	N/A	N/A	N/A	N/A
N/A	N/A	N/A	N/A	N/A
1,240,656	1,119,807	1,402,330	1,182,919	1,369,599

NUMBER OF SPLIT CITIES/CSAS, LA CITY NEIGHBORHOOD COUNCILS, COIS

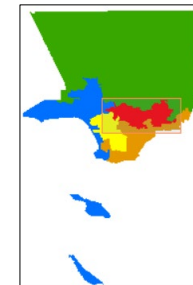
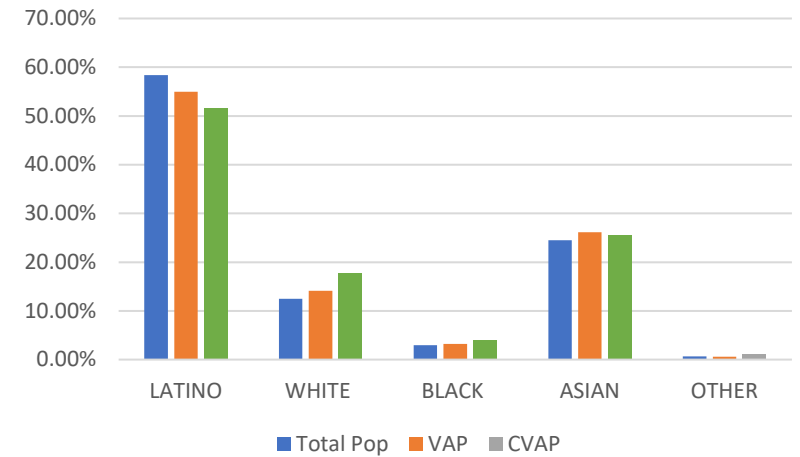
Max Deviation	Number of Districts with Polsby Popper-Compactness Score of >.2	# Majority Minority Districts		Splits		Community of Interest Models (COI)		
		Based on Total Population	Based on CVAP	Consolidated Statistical Areas (CSAs) # CSAs	Neighborhood Councils	COI A	COI B	COI C
8.36	1	3	2	31	30	13	13	15

District 1



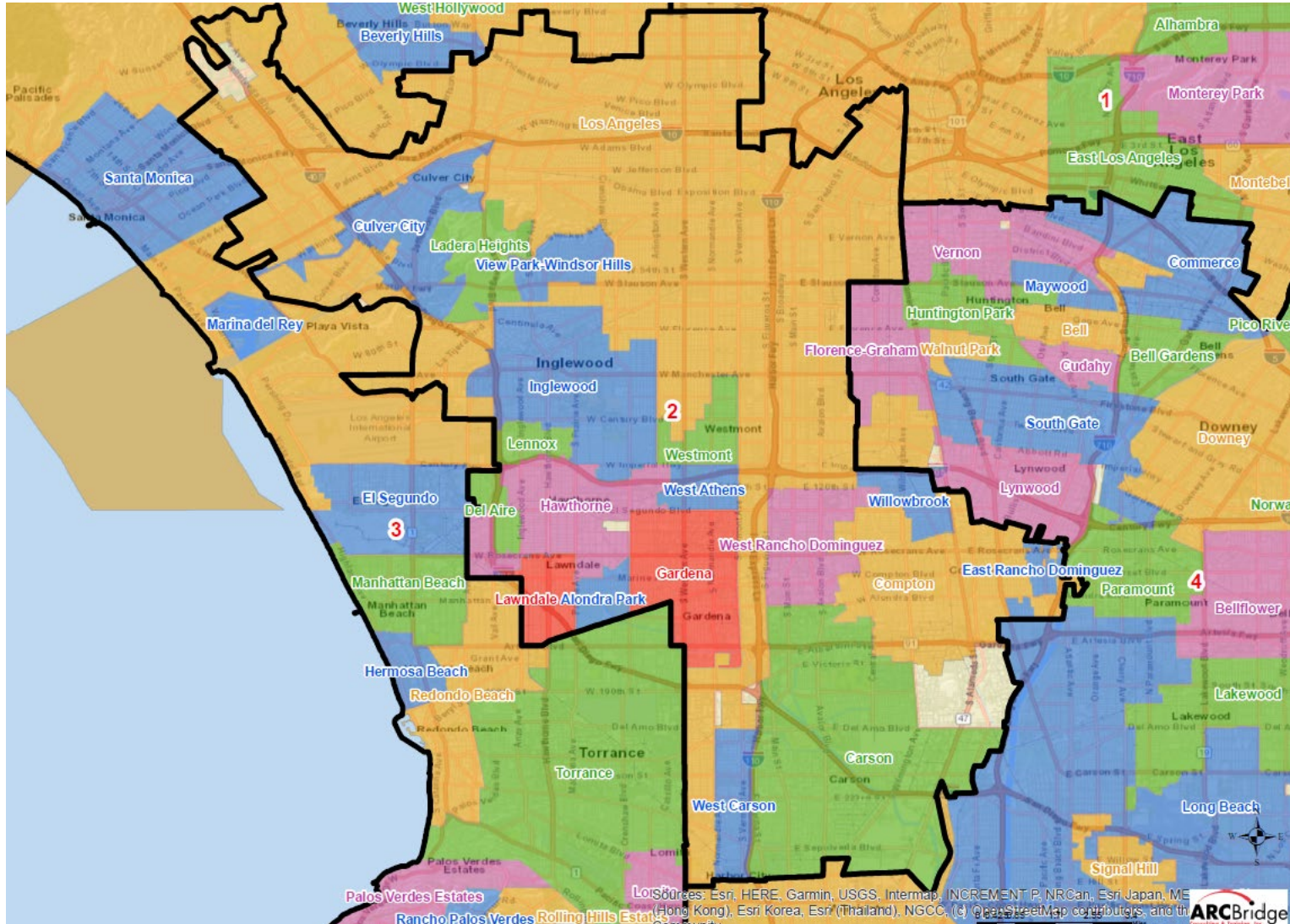
Name	Total Pop	Deviation	Deviation %
1	2,023,952	14,367	0.71%

Total Pop, VAP, CVAP



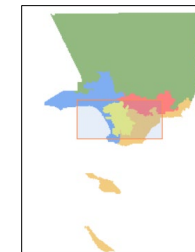
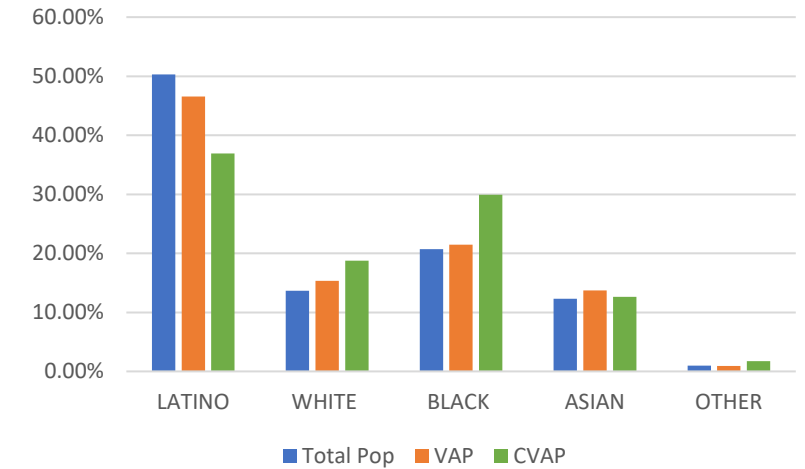
District 1	Total Pop	VAP	CVAP
LATINO	58.36%	54.95%	51.59%
WHITE	12.51%	14.15%	17.82%
BLACK	2.99%	3.23%	3.96%
ASIAN	24.51%	26.12%	25.53%
OTHER	0.66%	0.60%	1.10%

District 2



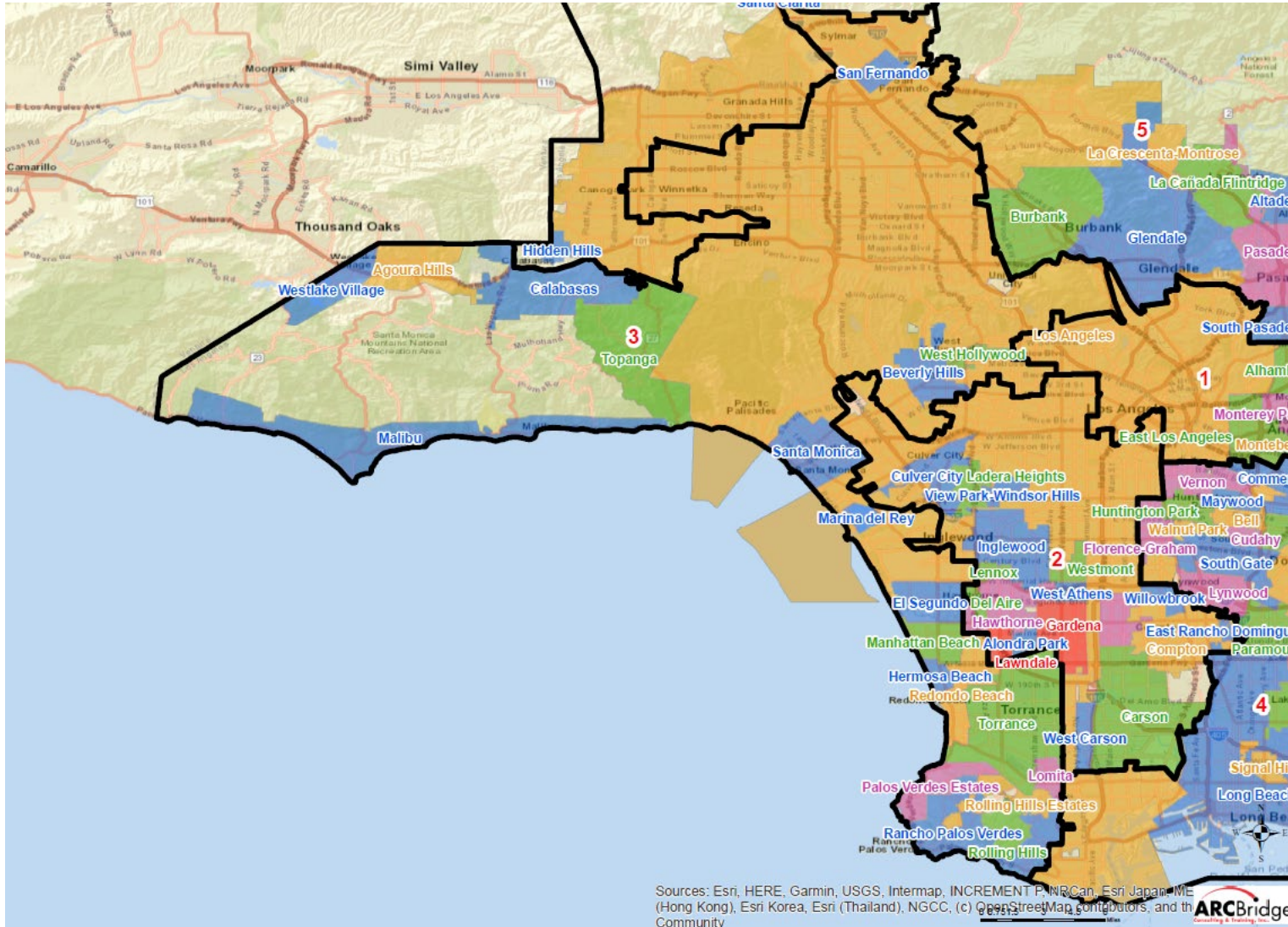
Name	Total Pop	Deviation	Deviation %
2	1,931,459	-78,126	-3.89%

Total Pop, VAP, CVAP



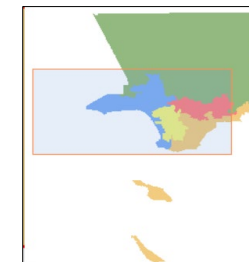
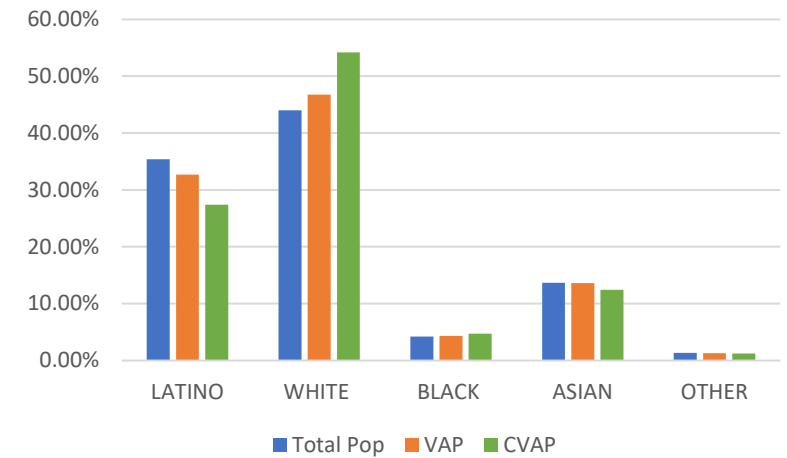
District 2	Total Pop	VAP	CVAP
LATINO	50.32%	46.59%	36.91%
WHITE	13.70%	15.35%	18.75%
BLACK	20.72%	21.48%	29.92%
ASIAN	12.35%	13.73%	12.64%
OTHER	1.00%	0.96%	1.78%

District 3



Name	Total Pop	Deviation	Deviation %
3	2,099,541	89,956	4.48%

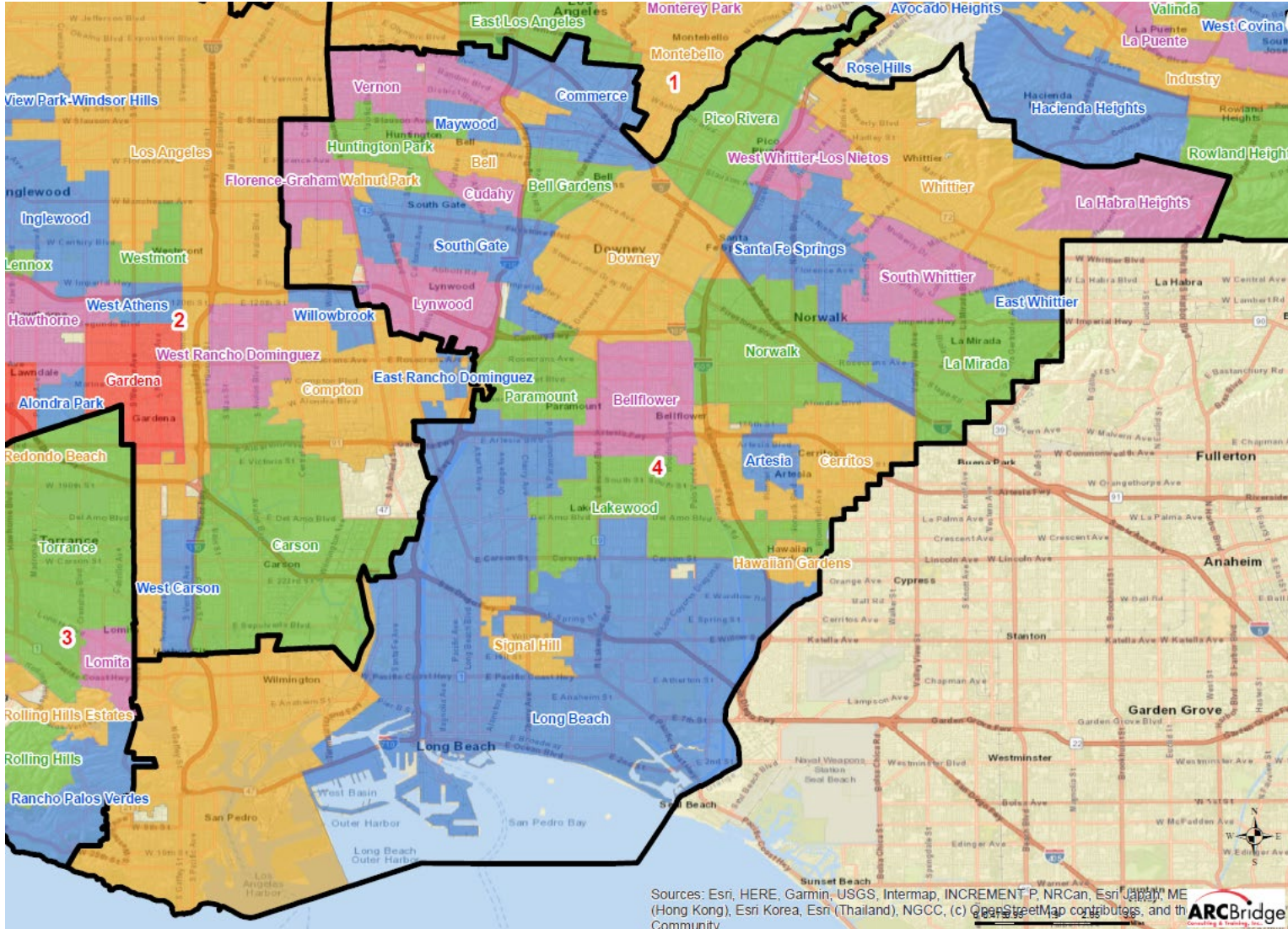
Total Pop, VAP, CVAP



District 3	Total Pop	VAP	CVAP
LATINO	35.36%	32.71%	27.40%
WHITE	44.02%	46.74%	54.21%
BLACK	4.24%	4.33%	4.75%
ASIAN	13.65%	13.64%	12.44%
OTHER	1.35%	1.26%	1.21%

Sources: Esri, HERE, Garmin, USGS, Intermap, INCREMENT P, NRCan, Esri Japan, Esri Korea, Esri (Thailand), NGCC, (c) OpenStreetMap contributors, and the ARC Bridge Consulting & Training, Inc.

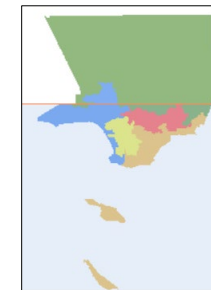
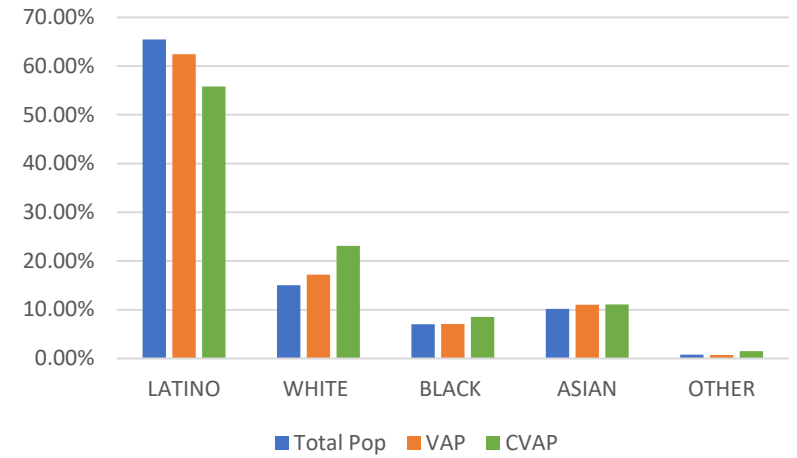
District 4



Sources: Esri, HERE, Garmin, USGS, Intermap, INCREMENT P, NRCan, Esri Japan, METI (Hong Kong), Esri Korea, Esri (Thailand), NGCC, (c) OpenStreetMap contributors, and the Community

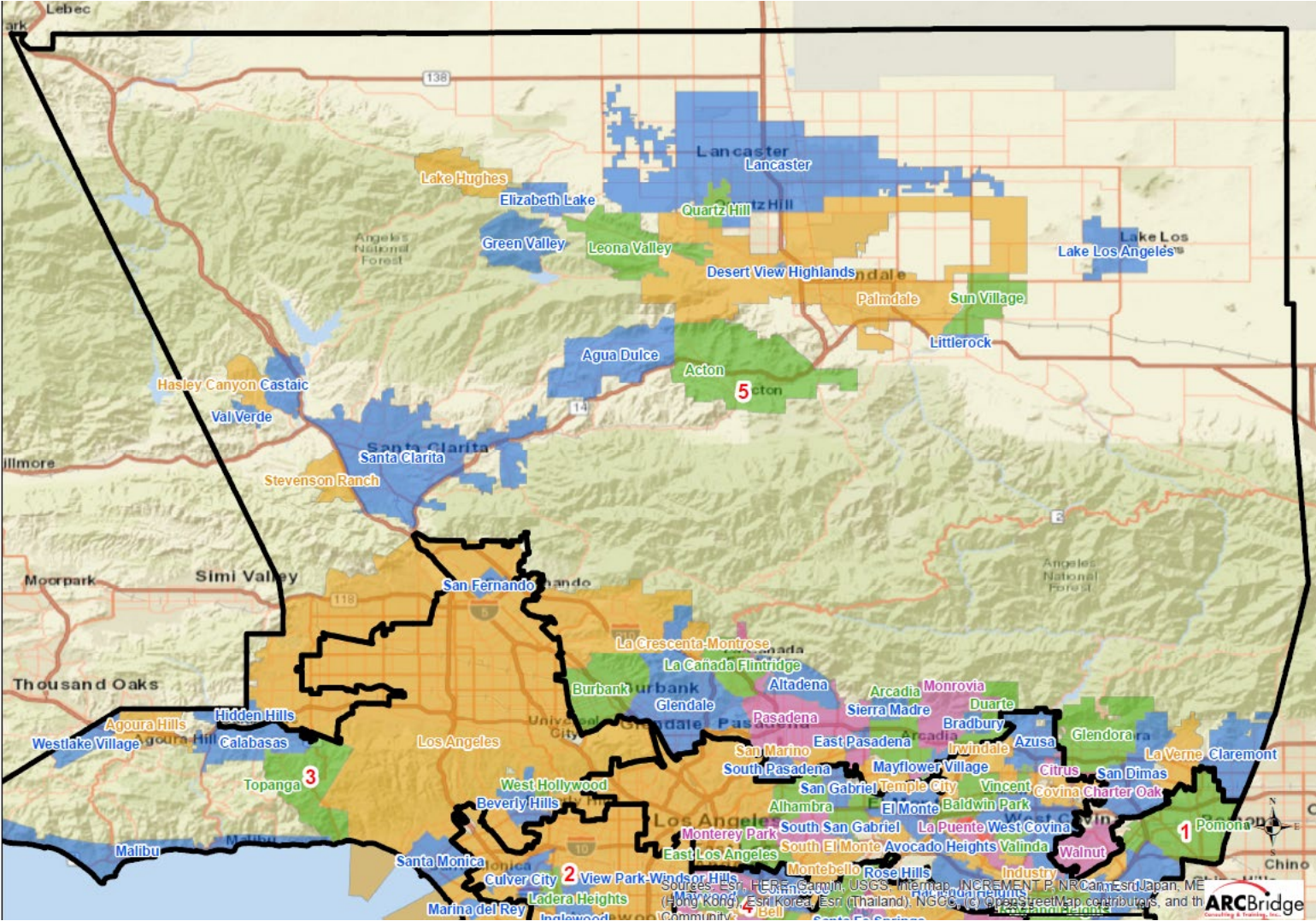
Name	Total Pop	Deviation	Deviation %
4	1,943,039	-66,546	-3.31%

Total Pop, VAP, CVAP



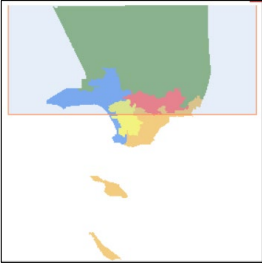
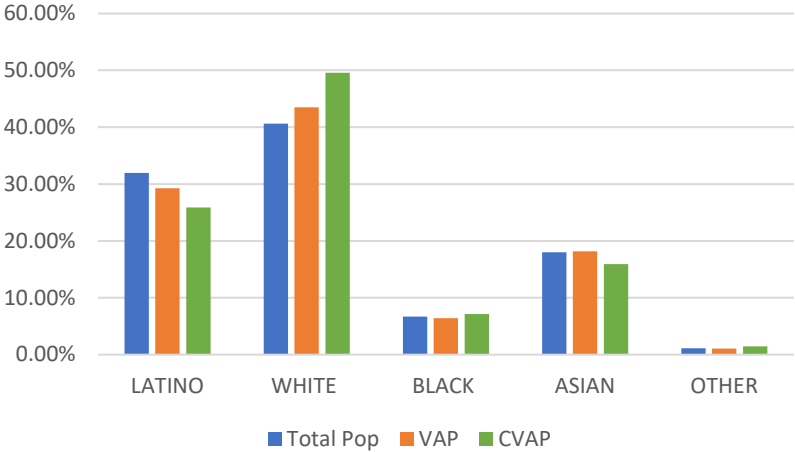
District 4	Total Pop	VAP	CVAP
LATINO	65.43%	62.40%	55.77%
WHITE	15.00%	17.18%	23.11%
BLACK	6.99%	7.08%	8.56%
ASIAN	10.20%	11.00%	11.09%
OTHER	0.76%	0.71%	1.48%

District 5



Name	Total Pop	Deviation	Deviation %
5	2,049,935	40,350	2.01%

Total Pop, VAP, CVAP



District 5	Total Pop	VAP	CVAP
LATINO	31.95%	29.27%	25.87%
WHITE	40.60%	43.51%	49.59%
BLACK	6.70%	6.44%	7.17%
ASIAN	18.00%	18.15%	15.91%
OTHER	1.11%	1.05%	1.46%