



LOS ANGELES COUNTY **REDISTRICTING 2021**

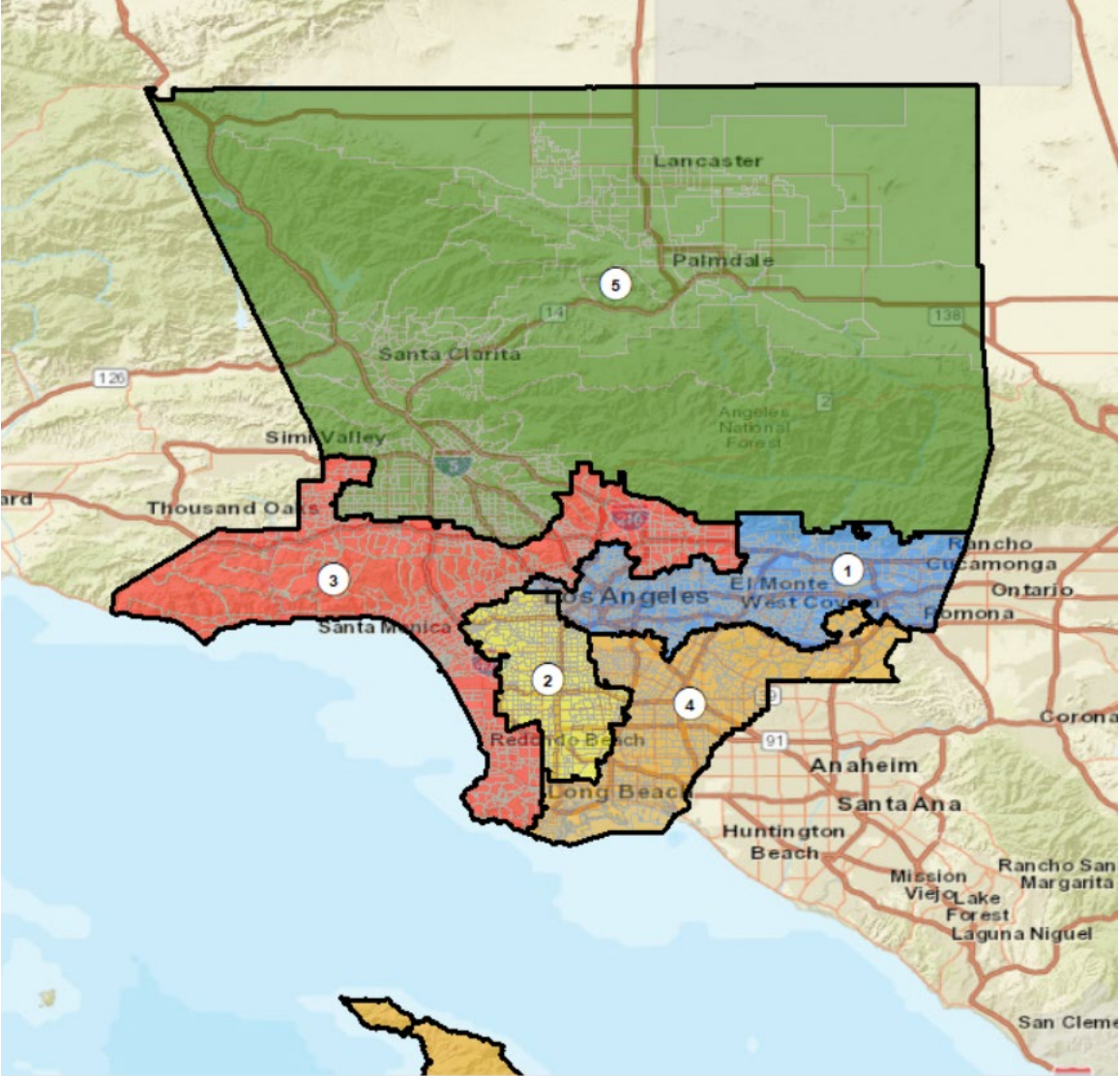
ANALYSIS OF Draft Plan
Name: Draft Map E – Revised 11-16-21

Presentation to the County of LOS ANGELES
CITIZENS REDISTRICTING COMMISSION

ARCBridge Consulting & Training Inc.
www.arcbridge.com



Plan Name: Draft Map E

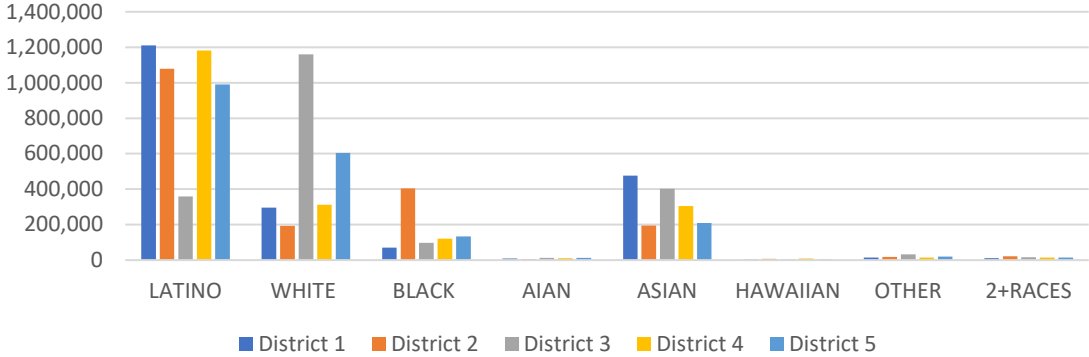


Maximum Deviation – 8.21%

Name	Total Pop	Deviation	Deviation %
1	2,088,084	78,499	3.91%
2	1,923,036	-86,549	-4.31%
3	2,082,854	73,269	3.65%
4	1,967,445	-42,140	-2.10%
5	1,986,507	-23,078	-1.15%

District	Latino	%	White	%	Black	%	Asian	%
1	1,210,442	57.97%	295,508	14.15%	69,328	3.32%	476,205	22.81%
2	1,078,855	56.10%	193,733	10.07%	403,234	20.97%	195,460	10.16%
3	358,596	17.22%	1,161,275	55.75%	97,561	4.68%	401,913	19.30%
4	1,182,956	60.13%	311,379	15.83%	120,175	6.11%	305,308	15.52%
5	990,854	49.88%	604,046	30.41%	132,533	6.67%	209,206	10.53%

Ethnic and Racial Information by District



CENSUS 2020 POPULATION AND CITIZEN VOTING AGE POPULATION

TOTAL POPULATION

	District 1	District 2	District 3	District 4	District 5
LATINO	1,210,442	1,078,855	358,596	1,182,956	990,854
LATINO %	57.97%	56.10%	17.22%	60.13%	49.88%
WHITE	295,508	193,733	1,161,275	311,379	604,046
WHITE%	14.15%	10.07%	55.75%	15.83%	30.41%
BLACK	69,328	403,234	97,561	120,175	132,533
BLACK %	3.32%	20.97%	4.68%	6.11%	6.67%
AIAN	8,830	5,512	12,268	9,939	12,710
AIAN %	0.42%	0.29%	0.59%	0.51%	0.64%
ASIAN	476,205	195,460	401,913	305,308	209,206
ASIAN %	22.81%	10.16%	19.30%	15.52%	10.53%
HAWAIIAN	2,475	6,470	4,132	9,386	3,176
HAWAIIAN %	0.12%	0.34%	0.20%	0.48%	0.16%
OTHER	14,446	17,601	31,399	14,909	20,104
OTHER %	0.69%	0.92%	1.51%	0.76%	1.01%
2+RACES	10,850	22,171	15,710	13,393	13,878
2+RACES%	0.52%	1.15%	0.75%	0.68%	0.70%
TOTAL	2,088,084	1,923,036	2,082,854	1,967,445	1,986,507

VOTING AGE POPULATION

District 1	District 2	District 3	District 4	District 5
914,460	783,428	279,975	878,896	722,936
54.58%	52.57%	16.07%	57.04%	46.78%
265,367	167,994	1,005,123	276,512	513,131
15.84%	11.27%	57.71%	17.94%	33.20%
59,981	328,453	81,741	95,196	101,009
3.58%	22.04%	4.69%	6.18%	6.54%
7,533	4,493	10,660	8,617	10,591
0.45%	0.30%	0.61%	0.56%	0.69%
407,380	170,918	325,328	254,121	170,896
24.32%	11.47%	18.68%	16.49%	11.06%
2,008	5,111	3,271	7,362	2,521
0.12%	0.34%	0.19%	0.48%	0.16%
10,649	12,874	24,569	10,936	14,681
0.64%	0.86%	1.41%	0.71%	0.95%
7,919	17,085	11,132	9,277	9,579
0.47%	1.15%	0.64%	0.60%	0.62%
1,675,297	1,490,356	1,741,799	1,540,917	1,545,344

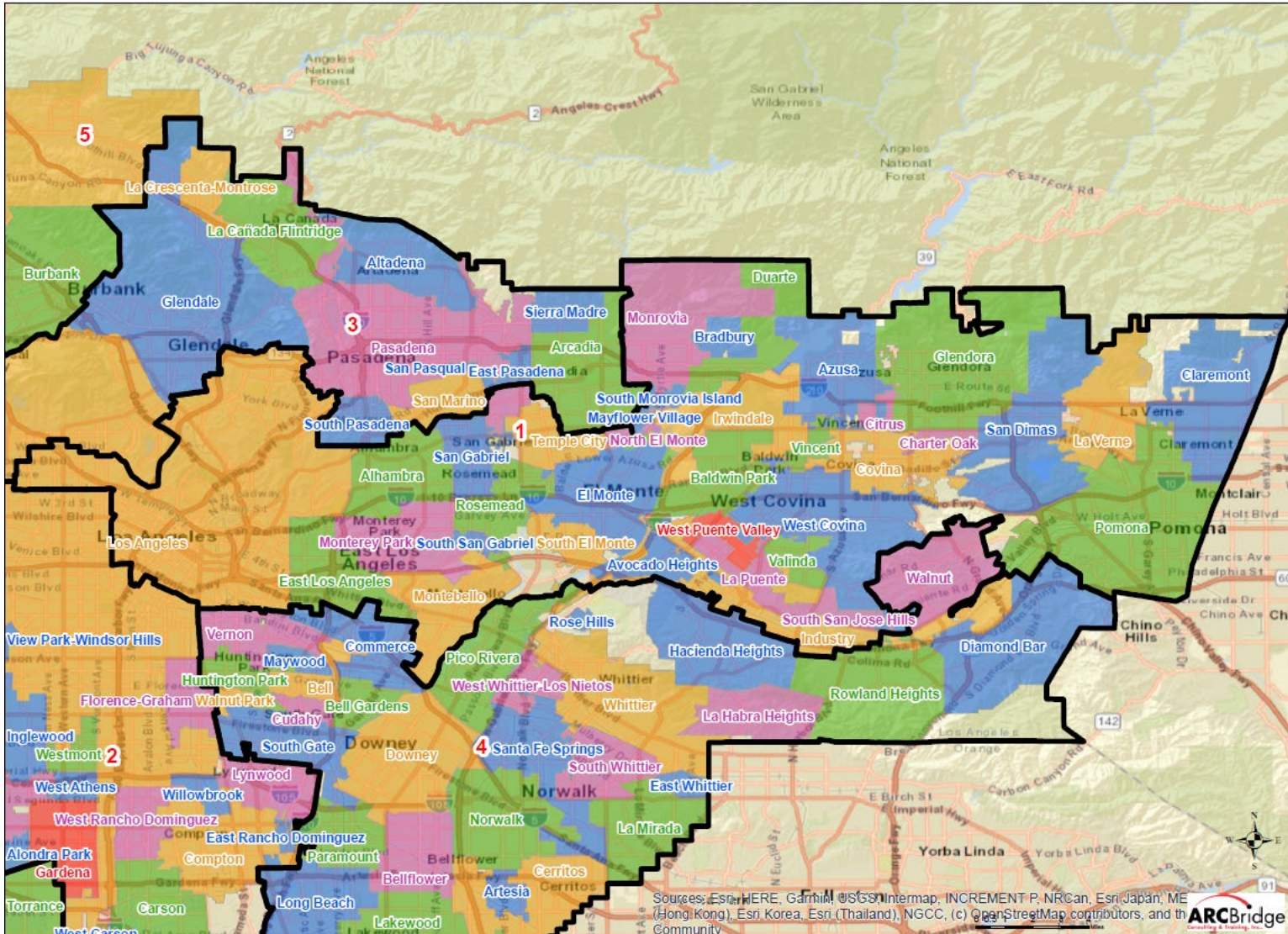
CITIZEN VOTING AGE POPULATION

District 1	District 2	District 3	District 4	District 5
654,672	450,652	220,030	637,044	489,370
50.95%	42.27%	14.67%	51.35%	40.00%
258,343	150,472	942,514	294,055	498,296
20.10%	14.11%	62.84%	23.70%	40.73%
56,143	334,378	77,110	91,000	91,510
4.37%	31.36%	5.14%	7.33%	7.48%
N/A	N/A	N/A	N/A	N/A
N/A	N/A	N/A	N/A	N/A
300,054	113,372	240,247	200,201	127,895
23.35%	10.63%	16.02%	16.14%	10.45%
N/A	N/A	N/A	N/A	N/A
N/A	N/A	N/A	N/A	N/A
15,795	17,324	19,982	18,394	16,458
1.23%	1.62%	1.33%	1.48%	1.35%
N/A	N/A	N/A	N/A	N/A
N/A	N/A	N/A	N/A	N/A
1,285,007	1,066,198	1,499,883	1,240,694	1,223,529

NUMBER OF SPLIT CITIES/CSAS, LA CITY NEIGHBORHOOD COUNCILS, COIS

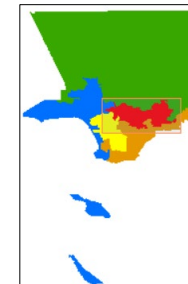
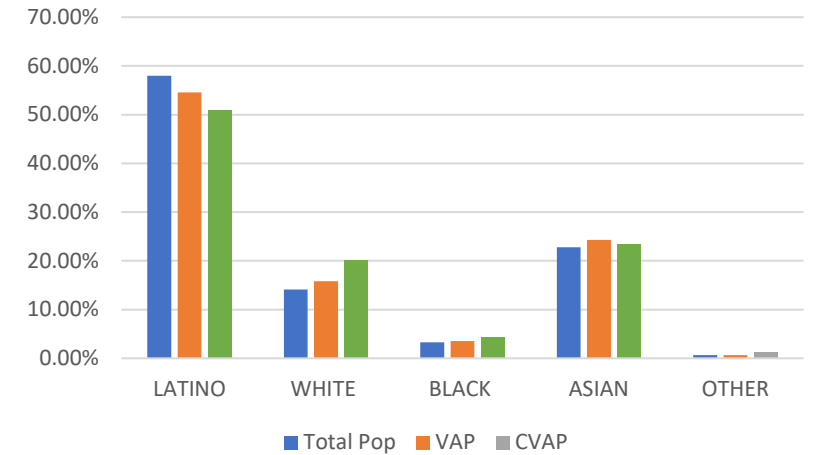
Max Deviation	Number of Districts with Polsby Popper-Compactness Score of >.2	# Majority Minority Districts		Splits		Community of Interest Models (COI)		
		Based on Total Population	Based on CVAP	Consolidated Statistical Areas (CSAs) # CSAs	Neighborhood Councils	COI A	COI B	COI C
8.21	2	3	2	12	21	12	9	11

District 1



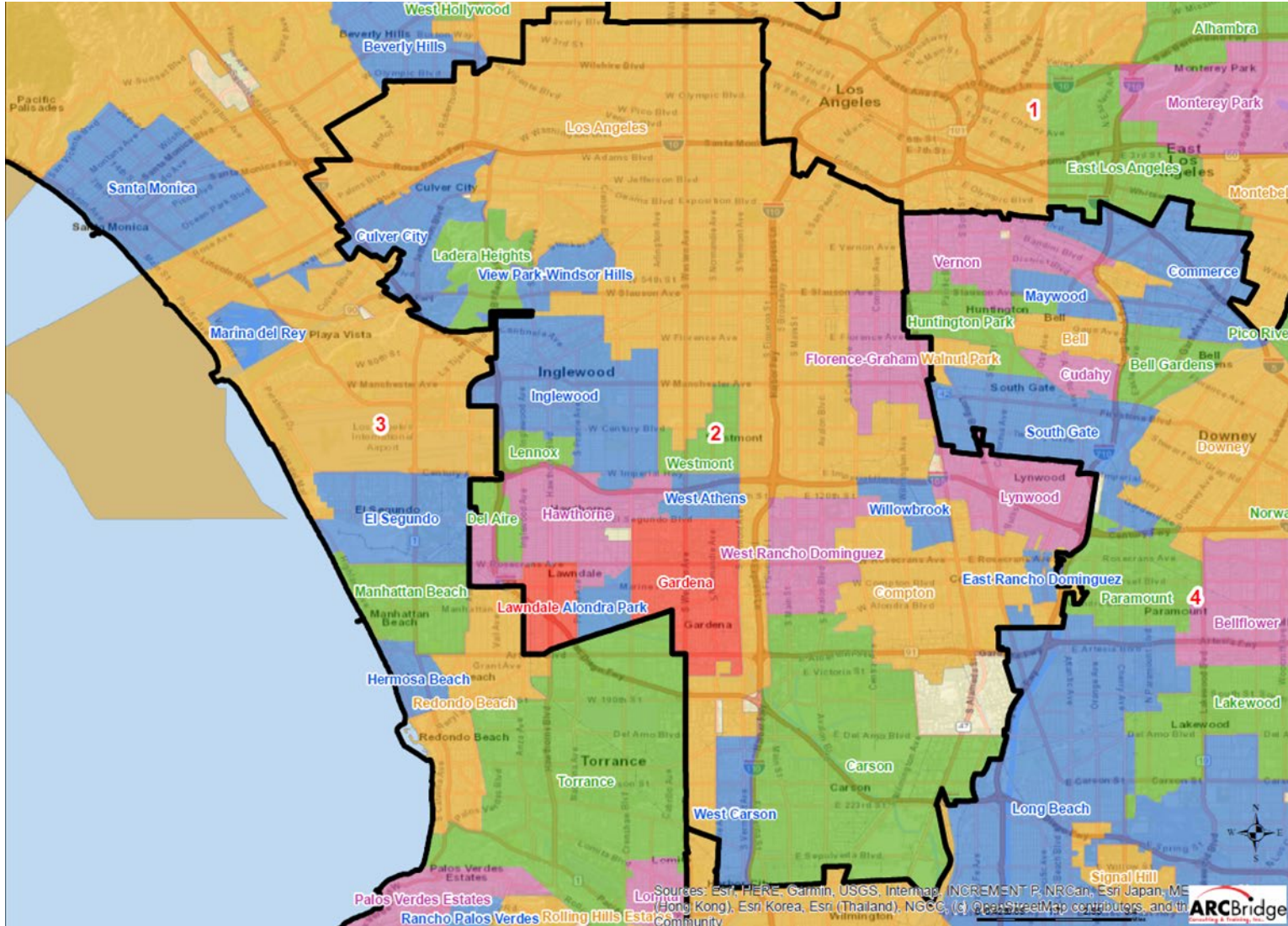
Name	Total Pop	Deviation	Deviation %
1	2,088,084	78,499	3.91%

Total Pop, VAP, CVAP



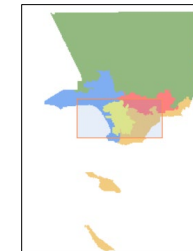
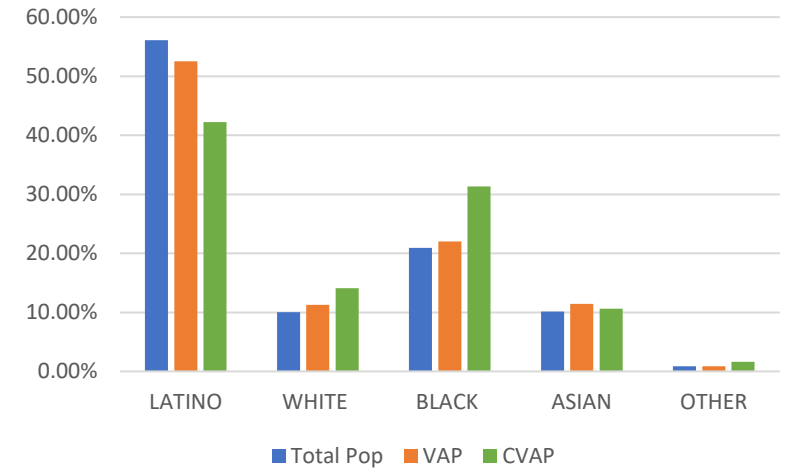
District 1	Total Pop	VAP	CVAP
LATINO	57.97%	54.58%	50.95%
WHITE	14.15%	15.84%	20.10%
BLACK	3.32%	3.58%	4.37%
ASIAN	22.81%	24.32%	23.35%
OTHER	0.69%	0.64%	1.23%

District 2



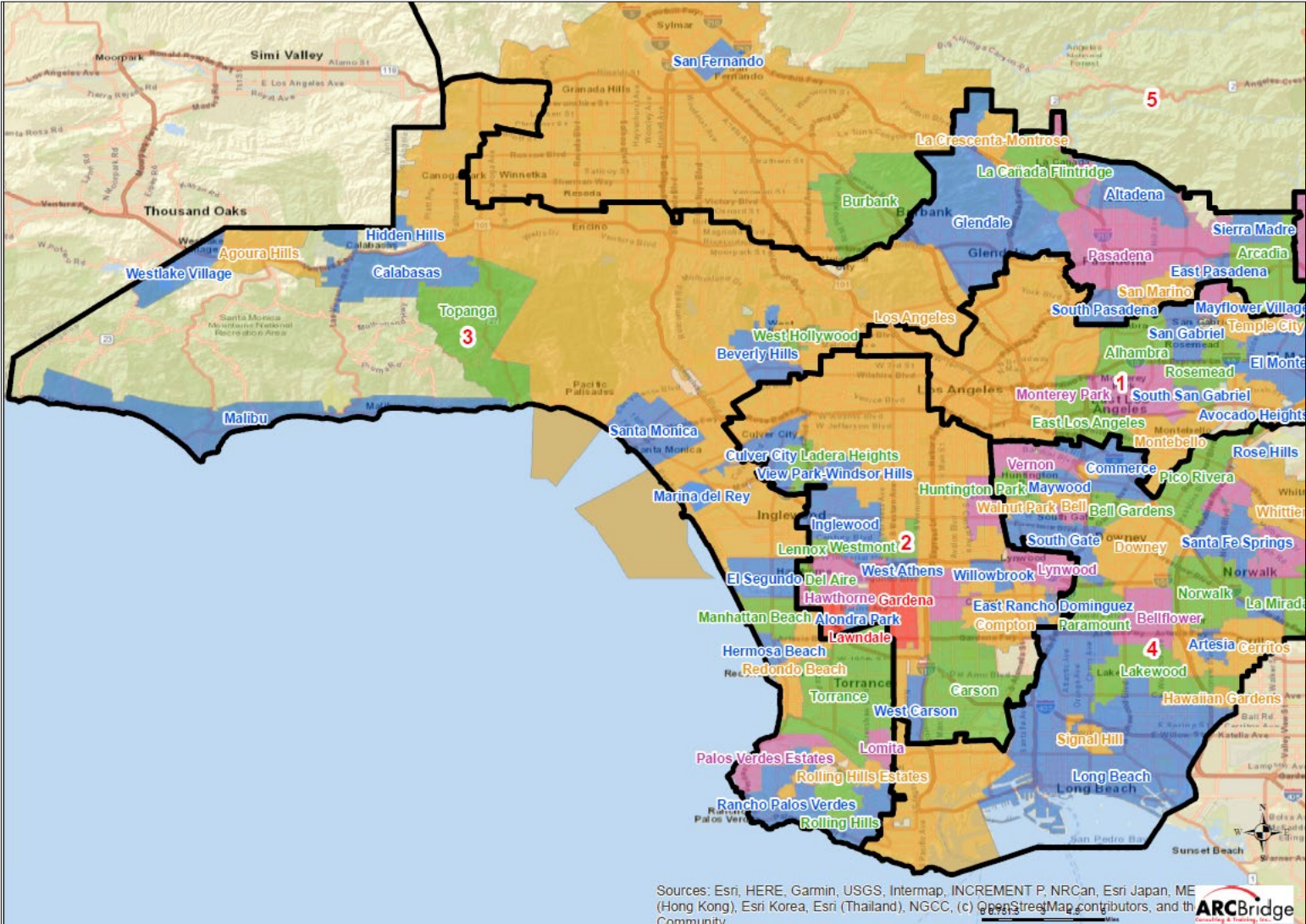
Name	Total Pop	Deviation	Deviation %
2	1,923,036	-86,549	-4.31%

Total Pop, VAP, CVAP



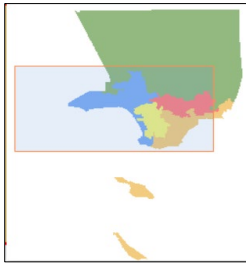
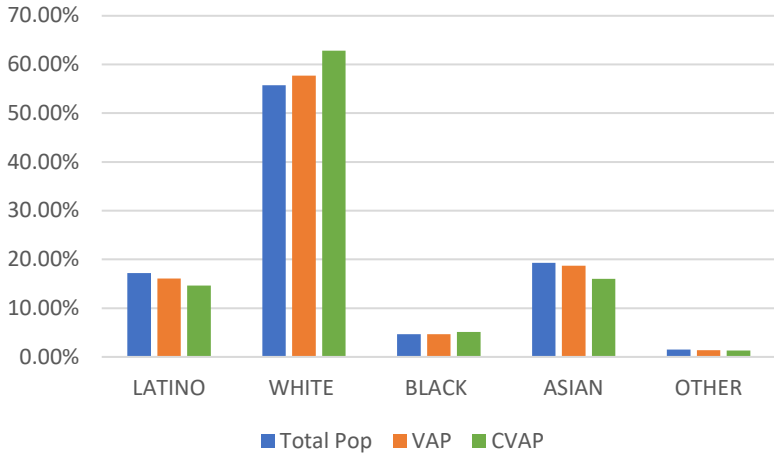
District 2	Total Pop	VAP	CVAP
LATINO	56.10%	52.57%	42.27%
WHITE	10.07%	11.27%	14.11%
BLACK	20.97%	22.04%	31.36%
ASIAN	10.16%	11.47%	10.63%
OTHER	0.92%	0.86%	1.62%

District 3



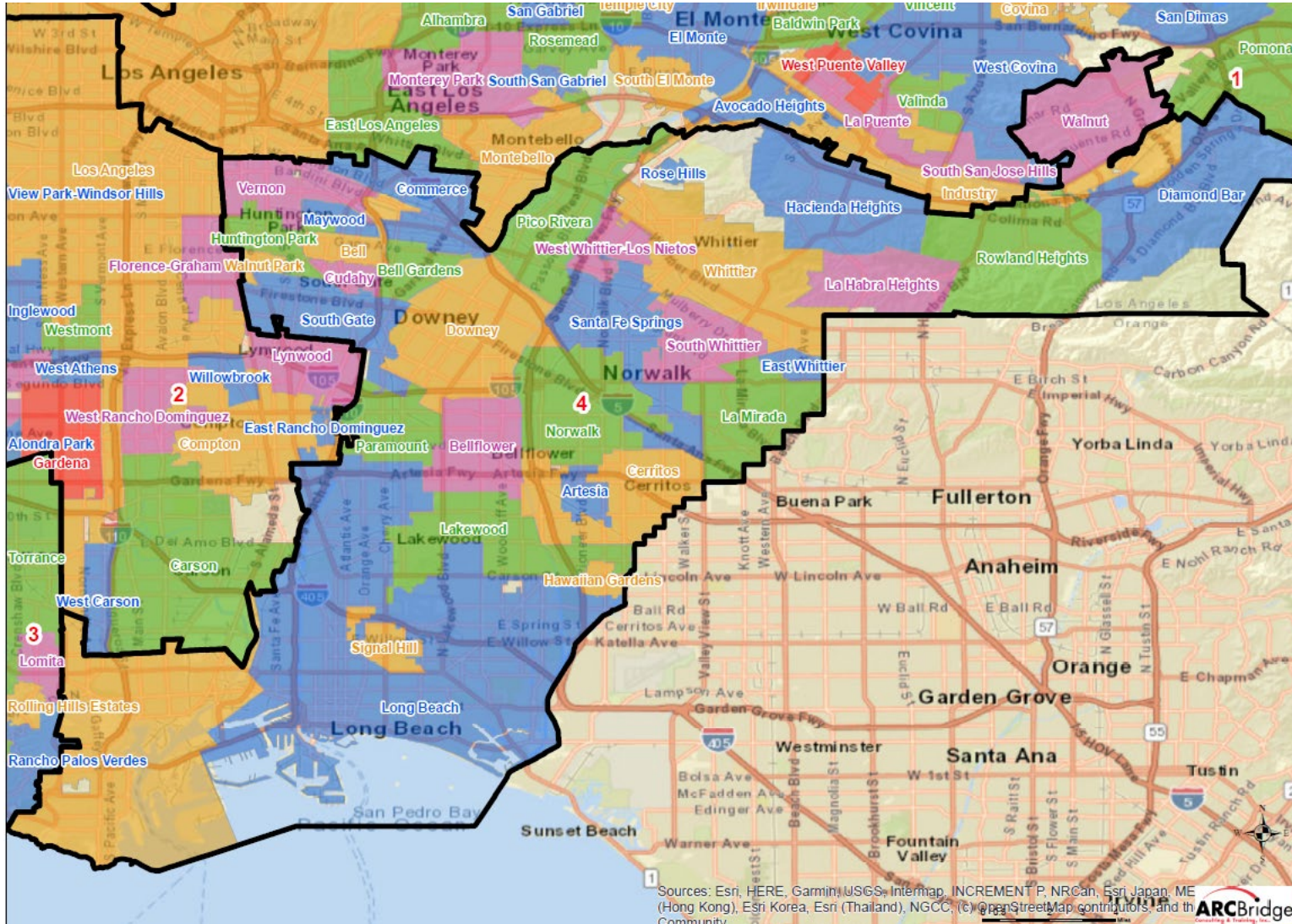
Name	Total Pop	Deviation	Deviation %
3	2,082,854	73,269	3.65%

Total Pop, VAP, CVAP



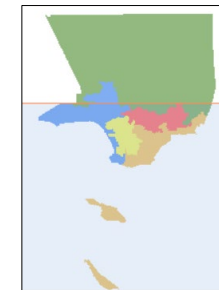
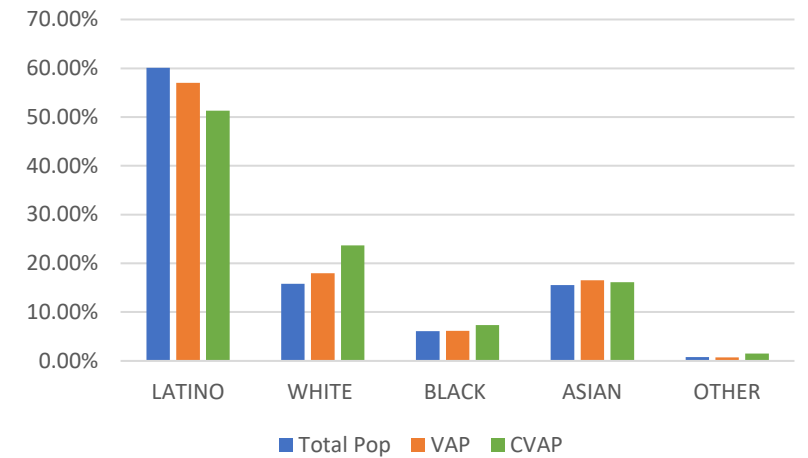
District 3	Total Pop	VAP	CVAP
LATINO	17.22%	16.07%	14.67%
WHITE	55.75%	57.71%	62.84%
BLACK	4.68%	4.69%	5.14%
ASIAN	19.30%	18.68%	16.02%
OTHER	1.51%	1.41%	1.33%

District 4



Name	Total Pop	Deviation	Deviation %
4	1,967,445	-42,140	-2.10%

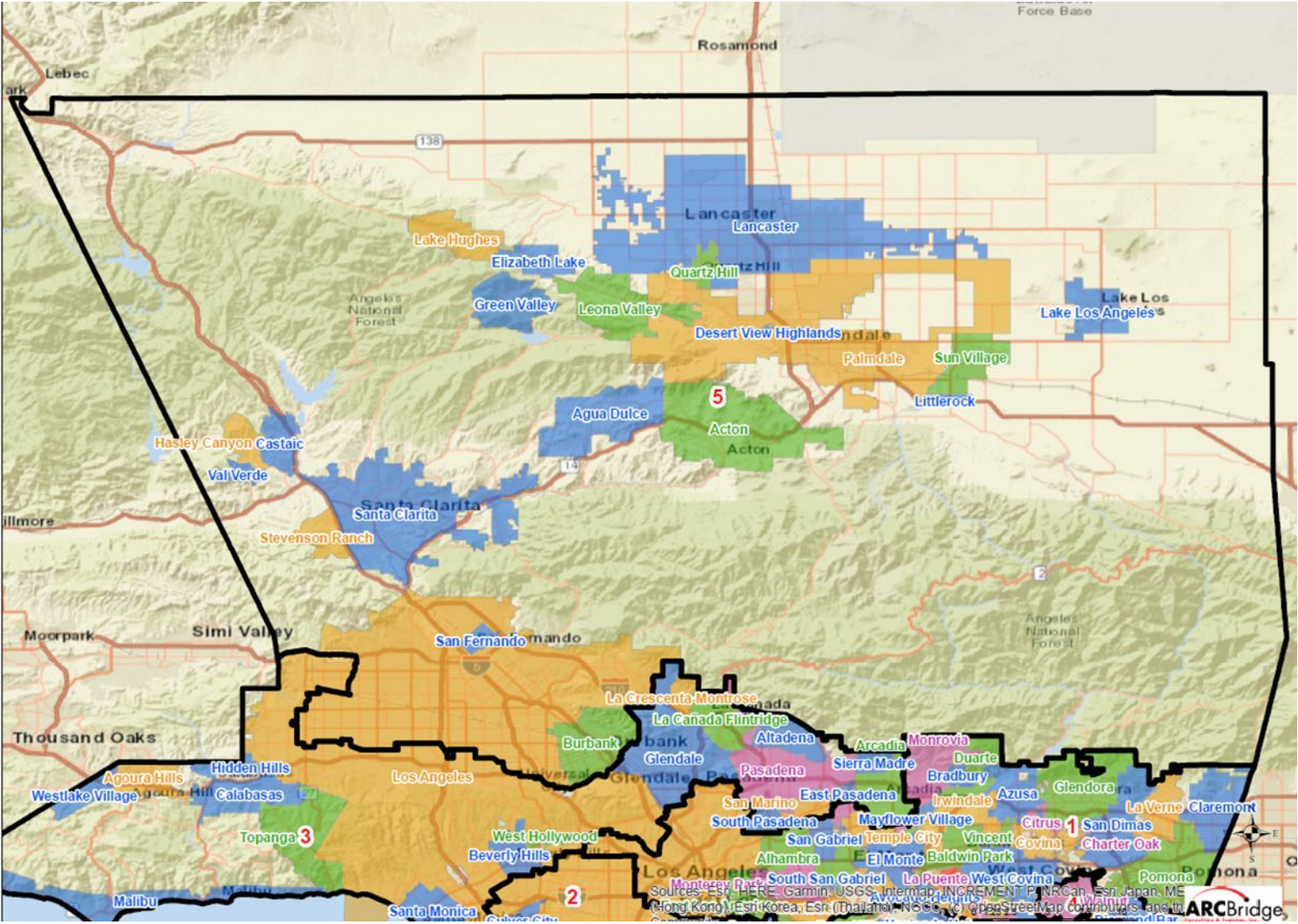
Total Pop, VAP, CVAP



District 4	Total Pop	VAP	CVAP
LATINO	60.13%	57.04%	51.35%
WHITE	15.83%	17.94%	23.70%
BLACK	6.11%	6.18%	7.33%
ASIAN	15.52%	16.49%	16.14%
OTHER	0.76%	0.71%	1.48%

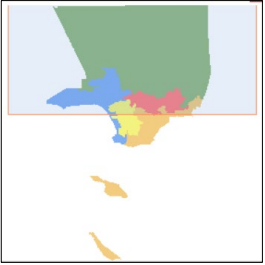
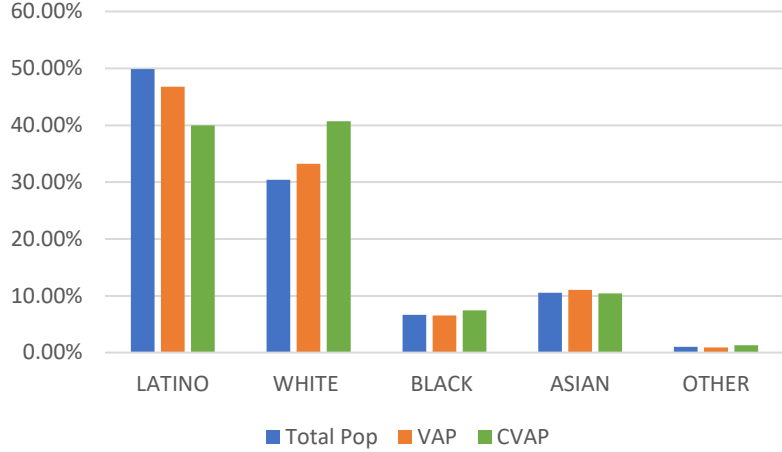
Sources: Esri, HERE, Garmin, USGS, Intermap, INCREMENT P, NRCan, Esri Japan, ME (Hong Kong), Esri Korea, Esri (Thailand), NGCC, (c) OpenStreetMap contributors, and the ARC Bridge

District 5



Name	Total Pop	Deviation	Deviation %
5	1,986,507	-23,078	-1.15%

Total Pop, VAP, CVAP



District 5	Total Pop	VAP	CVAP
LATINO	49.88%	46.78%	40.00%
WHITE	30.41%	33.20%	40.73%
BLACK	6.67%	6.54%	7.48%
ASIAN	10.53%	11.06%	10.45%
OTHER	1.01%	0.95%	1.35%