



LOS ANGELES COUNTY **REDISTRICTING 2021**

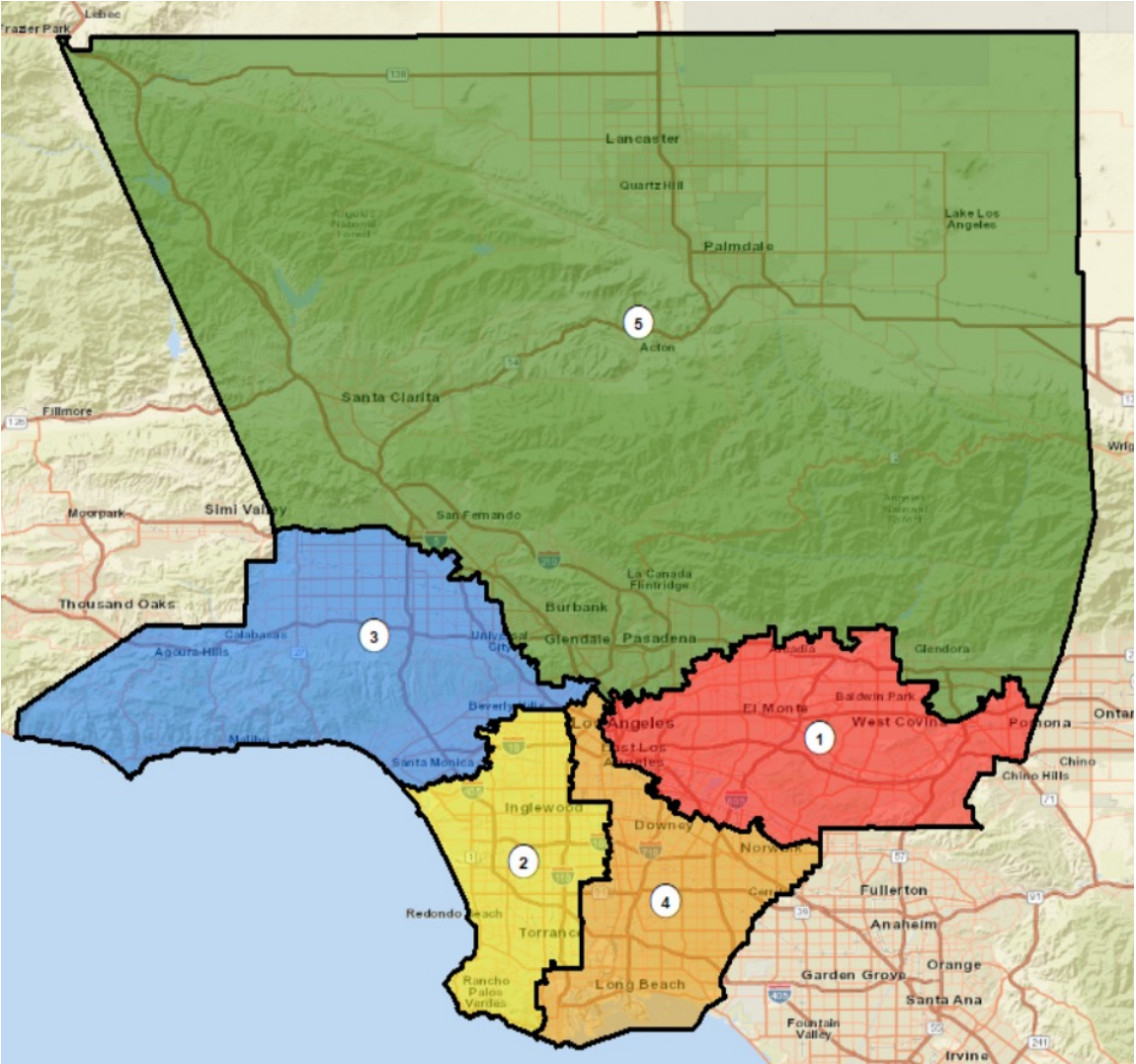
ANALYSIS OF Draft Plan
Name: Draft Map D

Presentation to the County of LOS ANGELES
CITIZENS REDISTRICTING COMMISSION

ARCBridge Consulting & Training Inc.
www.arcbridge.com



Plan Name: Draft Map D

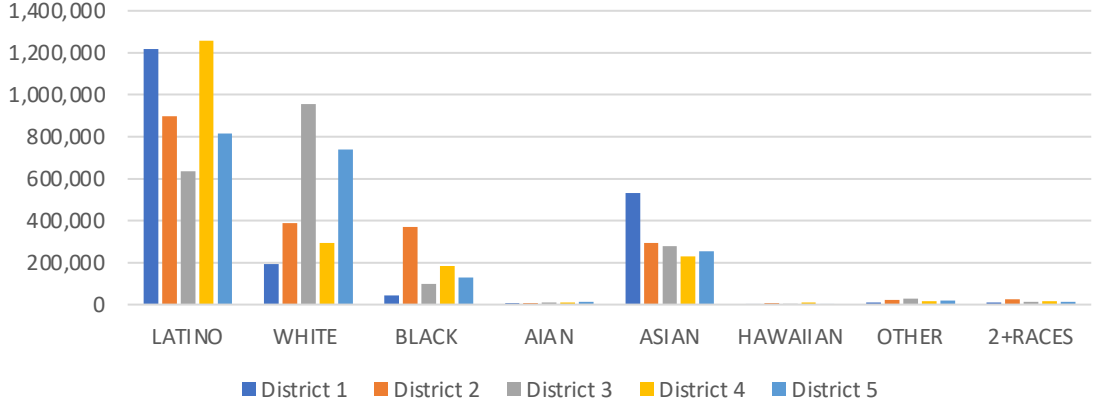


Maximum Deviation -1.54%

Name	Total Pop	Deviation	Deviation %
1	2,012,440	2,855	0.14%
2	2,008,874	-711	-0.04%
3	2,020,897	11,312	0.56%
4	2,015,731	6,146	0.31%
5	1,989,984	-19,601	-0.98%

District	Latino	%	White	%	Black	%	Asian	%
1	1,217,087	60.48%	191,537	9.52%	44,374	2.20%	530,400	26.36%
2	896,616	44.63%	387,824	19.31%	368,509	18.34%	294,808	14.68%
3	635,248	31.43%	954,081	47.21%	98,124	4.86%	277,055	13.71%
4	1,256,986	62.36%	294,258	14.60%	182,798	9.07%	230,986	11.46%
5	815,766	40.99%	738,241	37.10%	129,026	6.48%	254,843	12.81%

Ethnic and Racial Information by District



CENSUS 2020 POPULATION AND CITIZEN VOTING AGE POPULATION

TOTAL POPULATION

	District 1	District 2	District 3	District 4	District 5
LATINO	1,217,087	896,616	635,248	1,256,986	815,766
LATINO %	60.48%	44.63%	31.43%	62.36%	40.99%
WHITE	191,537	387,824	954,081	294,258	738,241
WHITE%	9.52%	19.31%	47.21%	14.60%	37.10%
BLACK	44,374	368,509	98,124	182,798	129,026
BLACK %	2.20%	18.34%	4.86%	9.07%	6.48%
AIAN	6,815	8,057	10,587	9,771	14,029
AIAN %	0.34%	0.40%	0.52%	0.48%	0.70%
ASIAN	530,400	294,808	277,055	230,986	254,843
ASIAN %	26.36%	14.68%	13.71%	11.46%	12.81%
HAWAIIAN	2,333	6,895	3,244	10,197	2,970
HAWAIIAN %	0.12%	0.34%	0.16%	0.51%	0.15%
OTHER	11,083	22,290	28,583	15,817	20,686
OTHER %	0.55%	1.11%	1.41%	0.78%	1.04%
2+RACES	8,811	23,875	13,975	14,918	14,423
2+RACES%	0.44%	1.19%	0.69%	0.74%	0.72%
TOTAL	2,012,440	2,008,874	2,020,897	2,015,731	1,989,984

VOTING AGE POPULATION

District 1	District 2	District 3	District 4	District 5
915,608	657,152	486,246	922,675	598,014
57.54%	41.39%	28.98%	58.85%	38.11%
171,245	336,020	830,284	263,108	627,470
10.76%	21.16%	49.49%	16.78%	39.99%
37,271	299,971	83,234	147,447	98,457
2.34%	18.89%	4.96%	9.40%	6.27%
5,733	6,710	9,205	8,468	11,778
0.36%	0.42%	0.55%	0.54%	0.75%
445,357	247,800	233,905	196,097	205,484
27.99%	15.61%	13.94%	12.51%	13.10%
1,836	5,430	2,604	8,026	2,377
0.12%	0.34%	0.16%	0.51%	0.15%
7,836	16,639	22,162	11,563	15,509
0.49%	1.05%	1.32%	0.74%	0.99%
6,346	18,099	10,114	10,471	9,962
0.40%	1.14%	0.60%	0.67%	0.63%
1,591,232	1,587,821	1,677,754	1,567,855	1,569,051

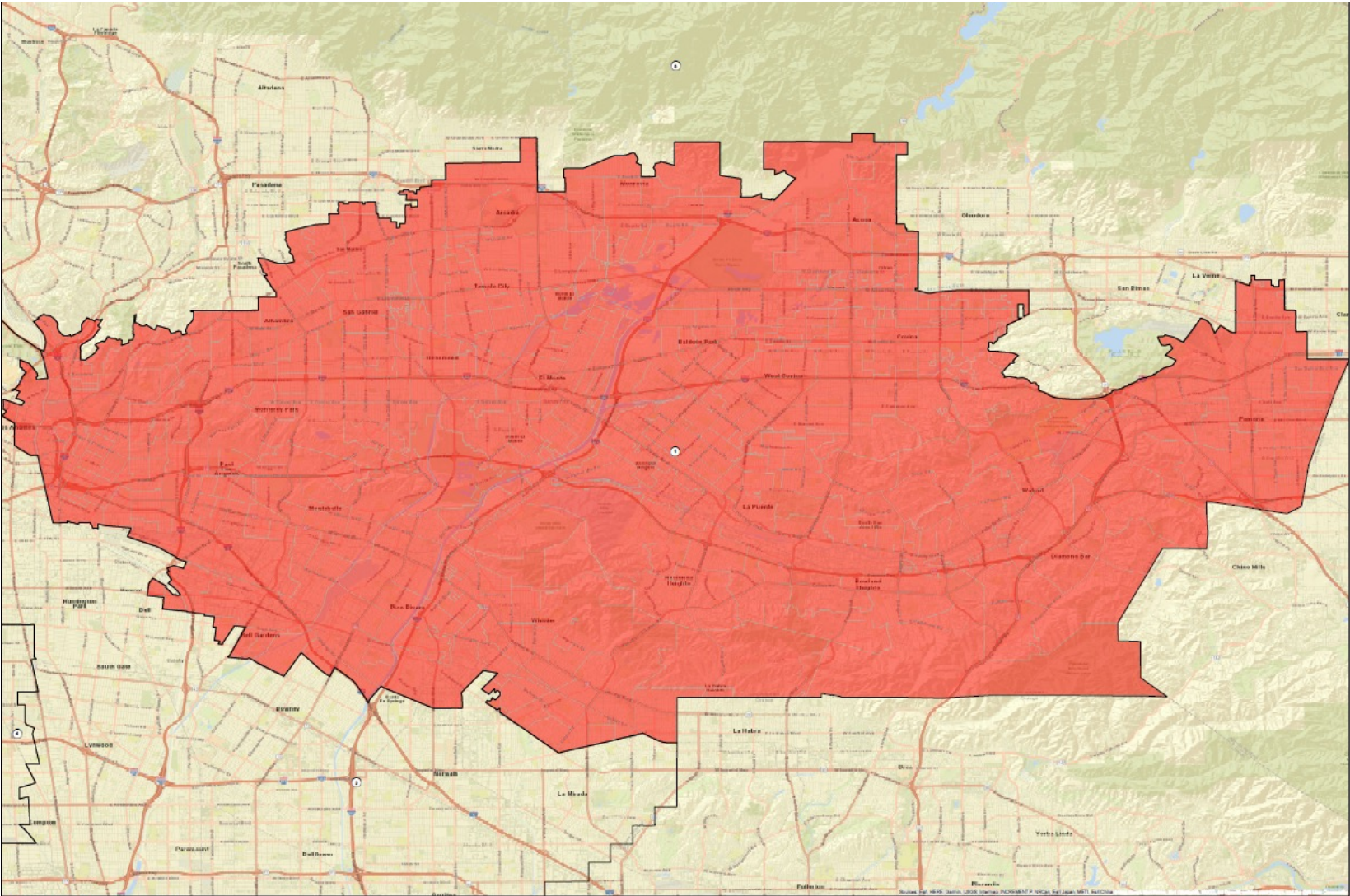
CITIZEN VOTING AGE POPULATION

District 1	District 2	District 3	District 4	District 5
690,931	394,797	328,137	599,536	438,367
54.99%	32.86%	23.84%	50.81%	33.70%
183,997	313,983	783,818	266,978	594,904
14.64%	26.13%	56.94%	22.63%	45.73%
37,169	300,577	78,161	142,118	92,116
2.96%	25.02%	5.68%	12.04%	7.08%
N/A	N/A	N/A	N/A	N/A
N/A	N/A	N/A	N/A	N/A
331,736	171,968	170,060	151,709	156,296
26.40%	14.31%	12.35%	12.86%	12.01%
N/A	N/A	N/A	N/A	N/A
N/A	N/A	N/A	N/A	N/A
12,642	20,128	16,367	19,608	19,208
1.01%	1.68%	1.19%	1.66%	1.48%
N/A	N/A	N/A	N/A	N/A
N/A	N/A	N/A	N/A	N/A
1,256,475	1,201,453	1,376,543	1,179,949	1,300,891

NUMBER OF SPLIT CITIES/CSAS, LA CITY NEIGHBORHOOD COUNCILS, COIS

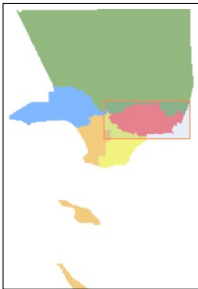
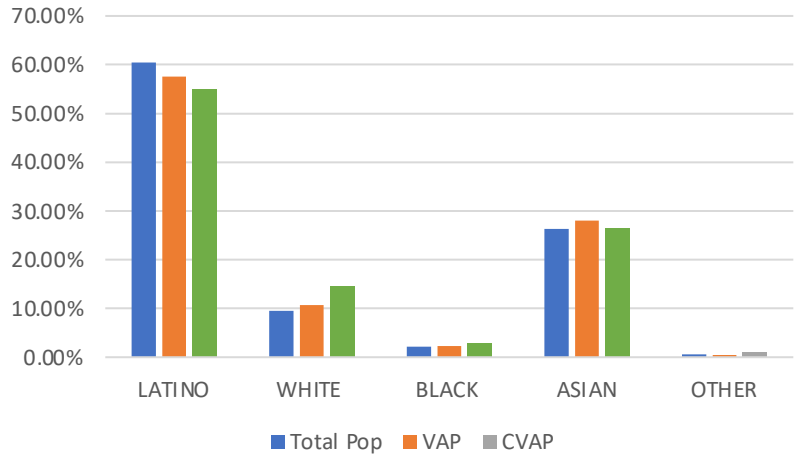
Max Deviation	Number of Districts with Polsby Popper-Compactness Score of >.2	# Majority Minority Districts		Splits		Community of Interest Models (COI)		
		Based on Total Population	Based on CVAP	Consolidated Statistical Areas (CSAs) # CSAs	Neighborhood Councils	COI A	COI B	COI C
1.54	4	2	2	36	30	19	17	19

District 1



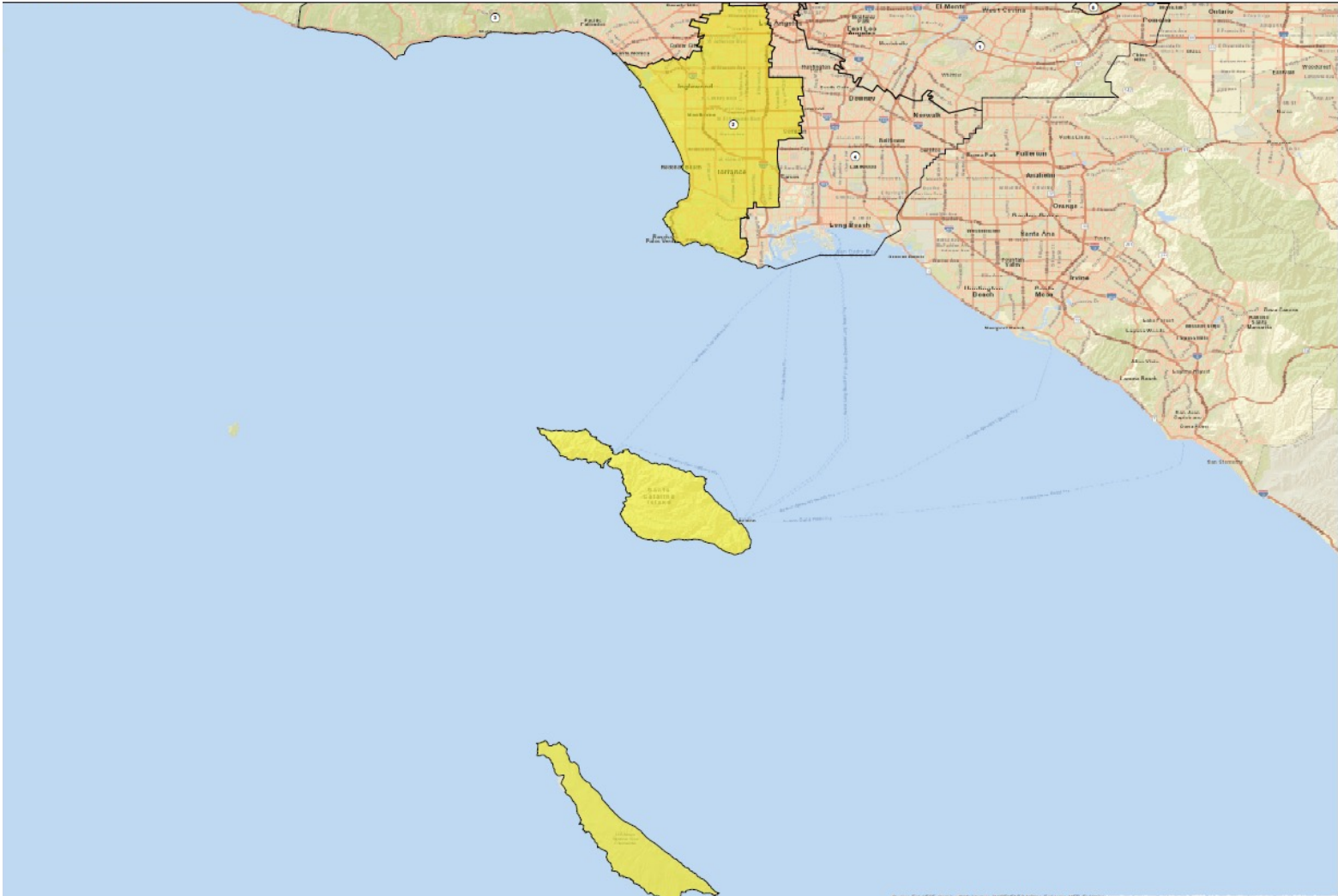
Name	Total Pop	Deviation	Deviation %
1	2,012,440	2,855	0.14%

Total Pop, VAP, CVAP



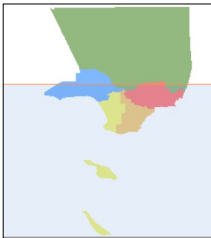
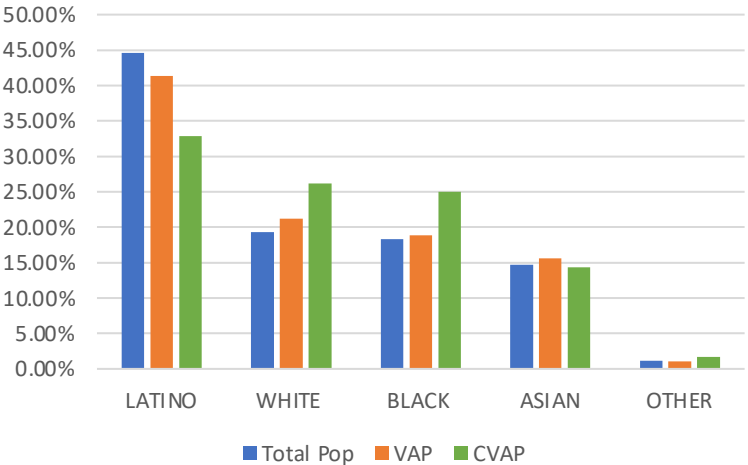
District 1	Total Pop	VAP	CVAP
LATINO	60.48%	57.54%	54.99%
WHITE	9.52%	10.76%	14.64%
BLACK	2.20%	2.34%	2.96%
ASIAN	26.36%	27.99%	26.40%
OTHER	0.55%	0.49%	1.01%

District 2



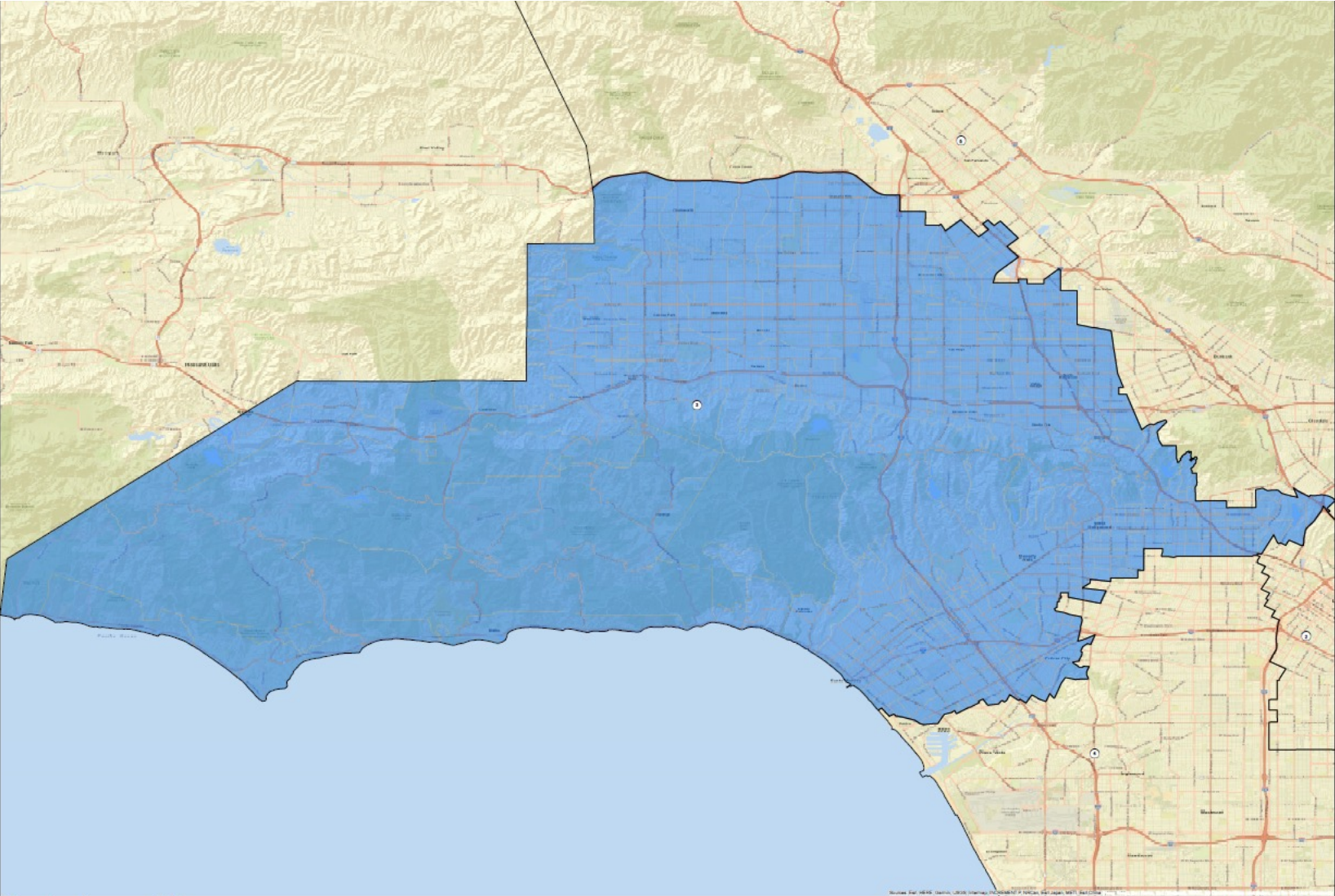
Name	Total Pop	Deviation	Deviation %
2	2,008,874	-711	-0.04%

Total Pop, VAP, CVAP



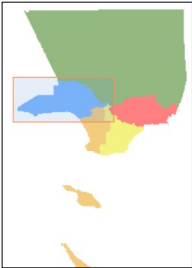
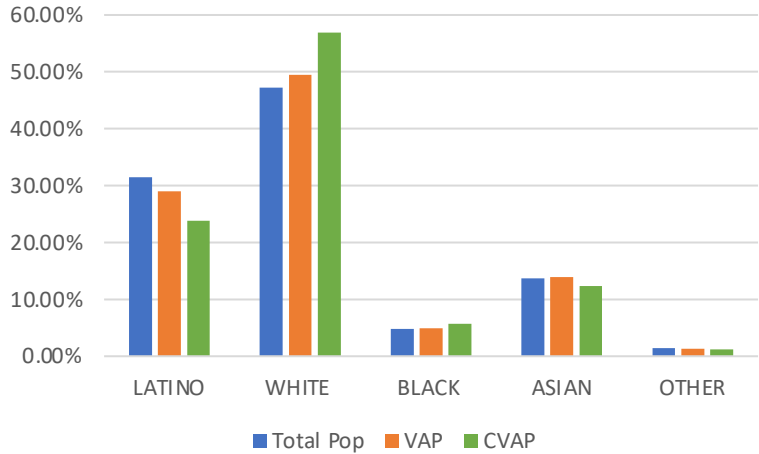
District 2	Total Pop	VAP	CVAP
LATINO	44.63%	41.39%	32.86%
WHITE	19.31%	21.16%	26.13%
BLACK	18.34%	18.89%	25.02%
ASIAN	14.68%	15.61%	14.31%
OTHER	1.11%	1.05%	1.68%

District 3



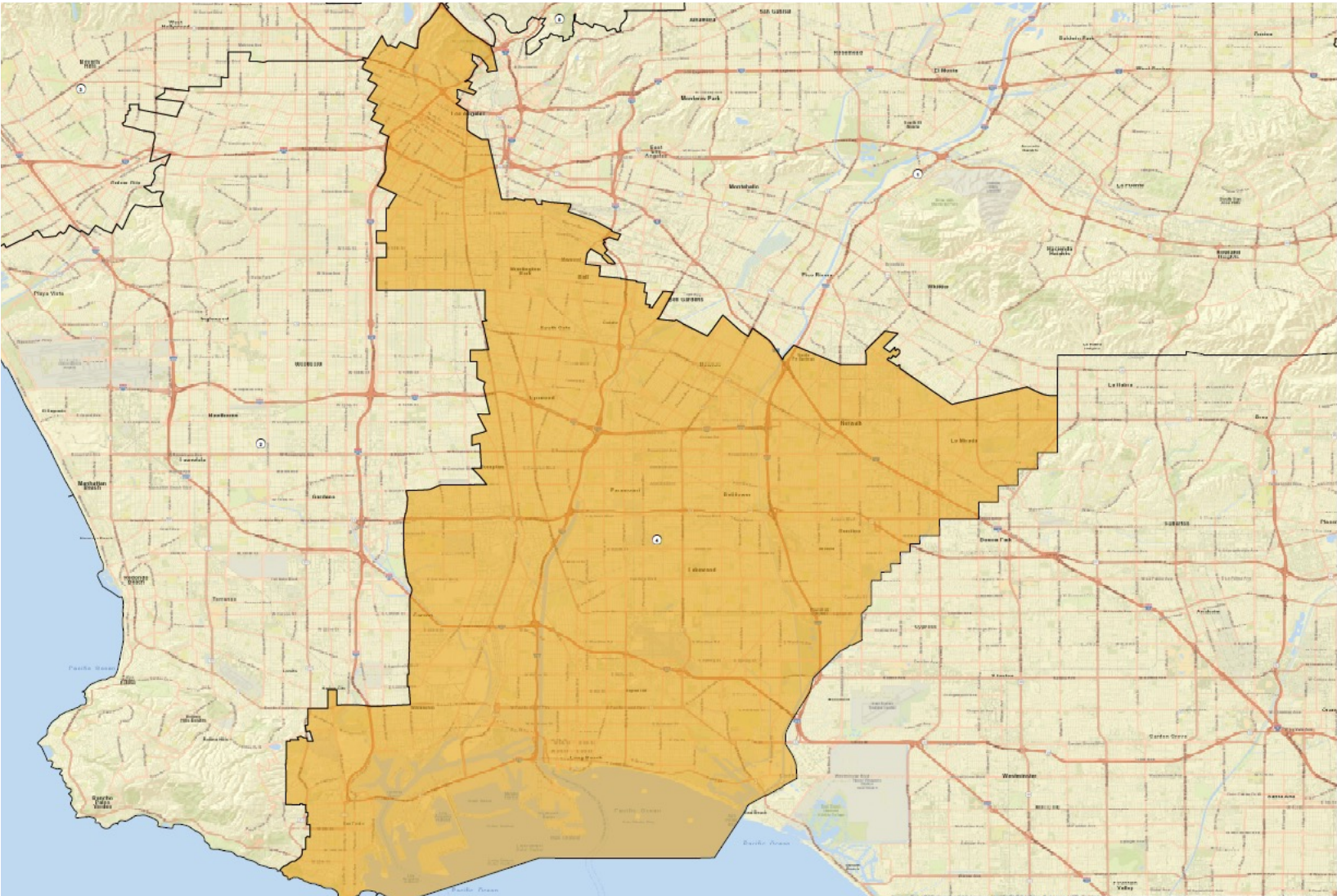
Name	Total Pop	Deviation	Deviation %
3	2,020,897	11,312	0.56%

Total Pop, VAP, CVAP



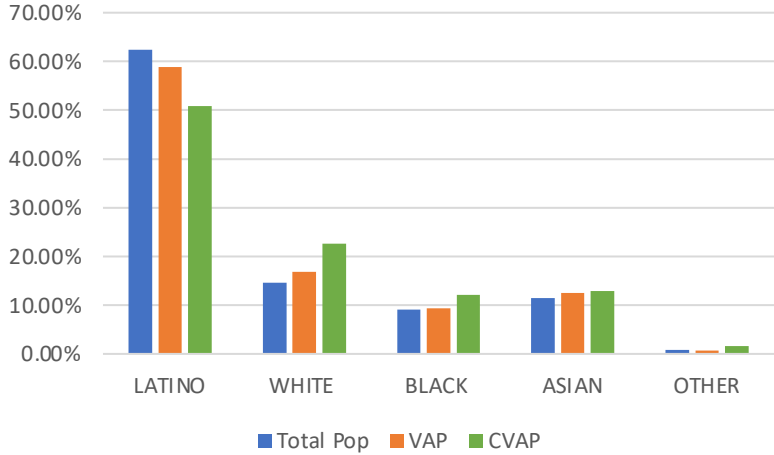
District 3	Total Pop	VAP	CVAP
LATINO	31.43%	28.98%	23.84%
WHITE	47.21%	49.49%	56.94%
BLACK	4.86%	4.96%	5.68%
ASIAN	13.71%	13.94%	12.35%
OTHER	1.41%	1.32%	1.19%

District 4



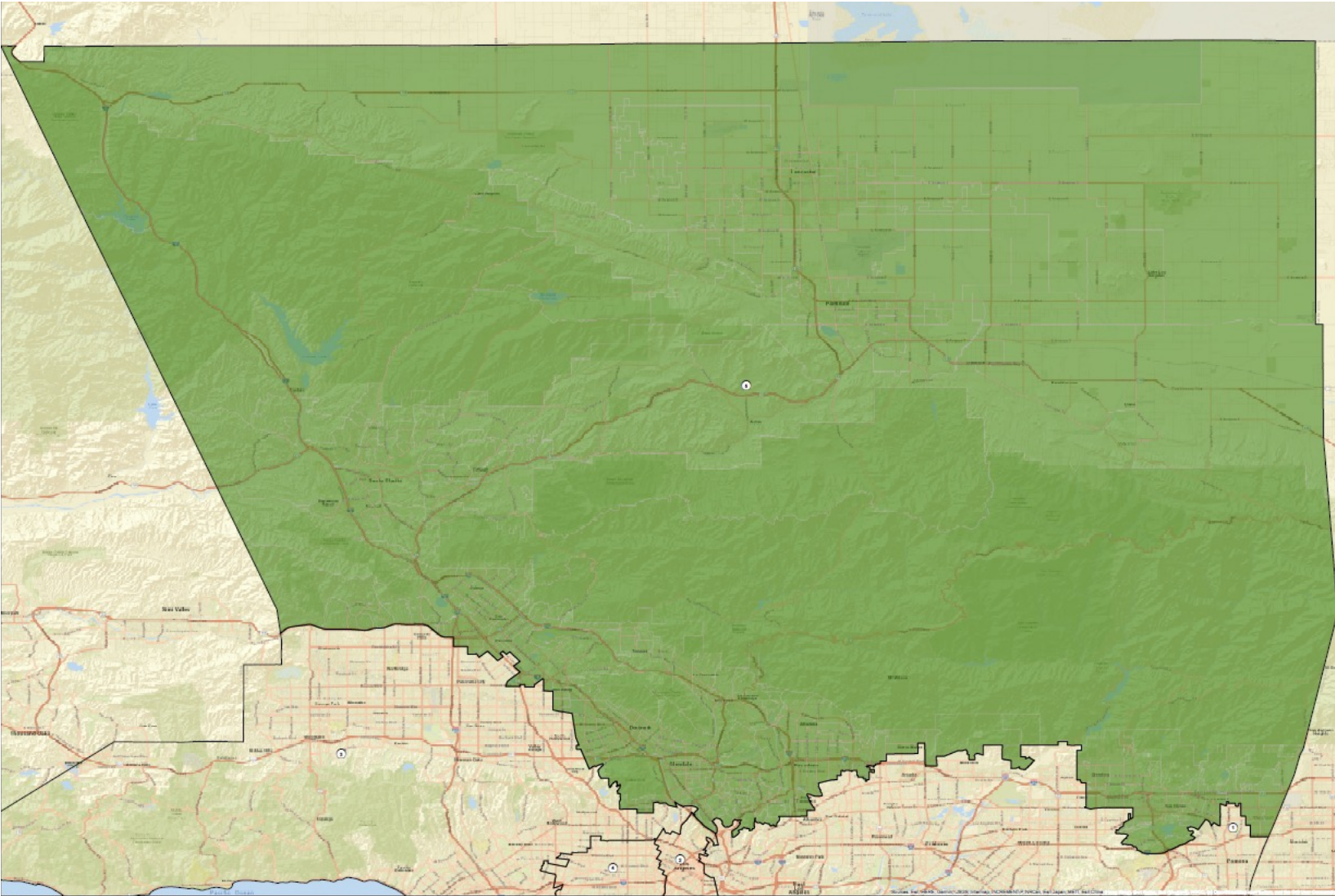
Name			
4	2,015,731	6,146	0.31%

Total Pop, VAP, CVAP



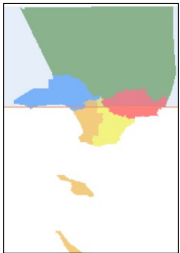
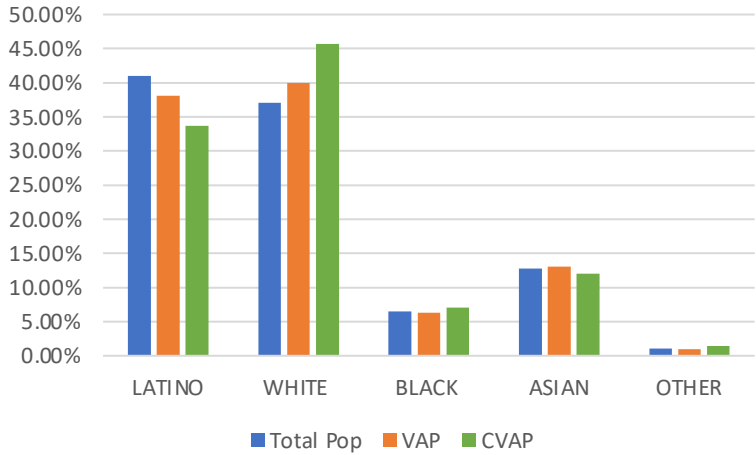
District 4	Total Pop	VAP	CVAP
LATINO	62.36%	58.85%	50.81%
WHITE	14.60%	16.78%	22.63%
BLACK	9.07%	9.40%	12.04%
ASIAN	11.46%	12.51%	12.86%
OTHER	0.78%	0.74%	1.66%

District 5



Name	Total Pop	Deviation	Deviation %
5	1,989,984	-19,601	-0.98%

Total Pop, VAP, CVAP



District 5	Total Pop	VAP	CVAP
LATINO	40.99%	38.11%	33.70%
WHITE	37.10%	39.99%	45.73%
BLACK	6.48%	6.27%	7.08%
ASIAN	12.81%	13.10%	12.01%
OTHER	1.04%	0.99%	1.48%