



# LOS ANGELES COUNTY **REDISTRICTING 2021**

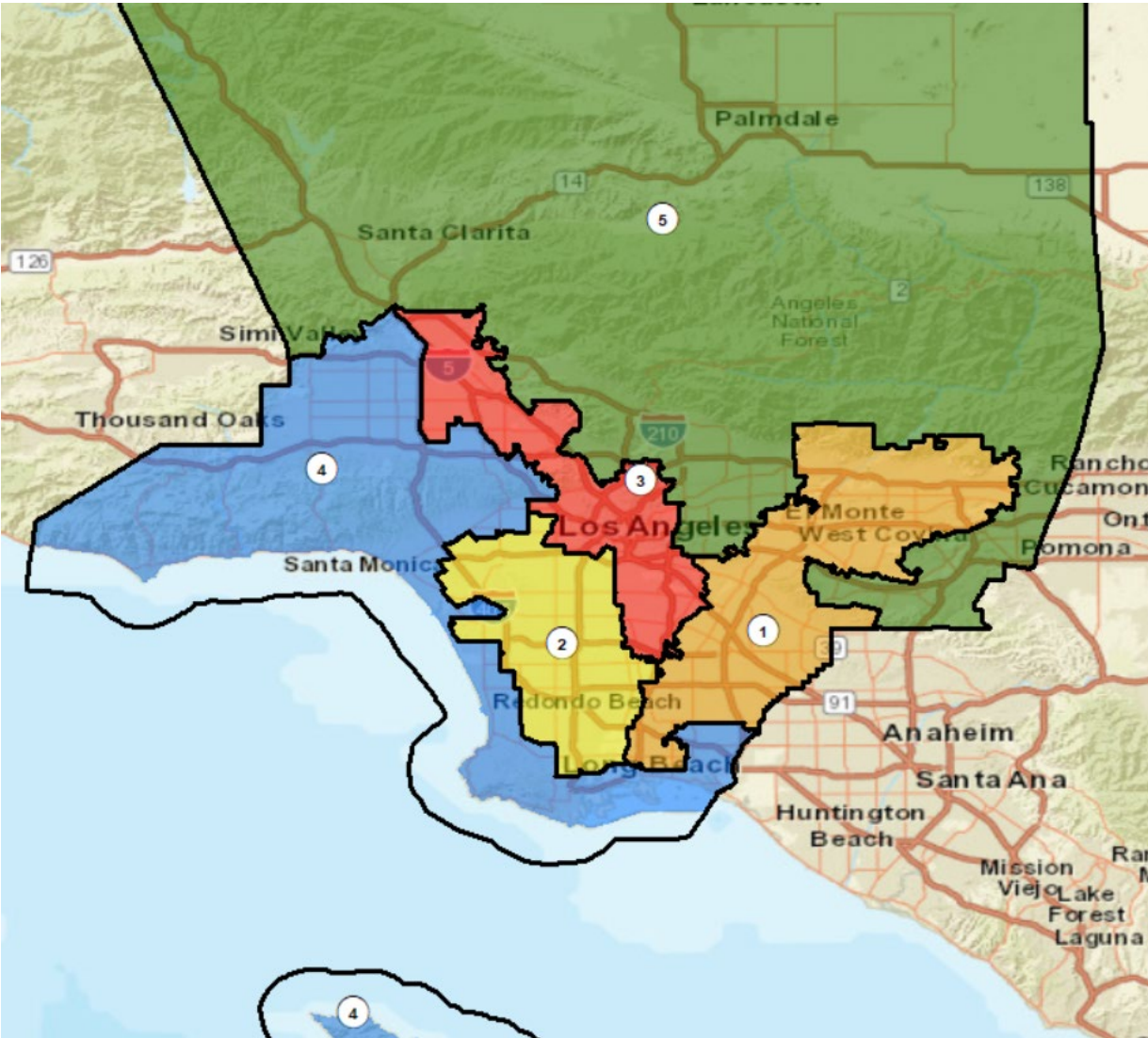
ANALYSIS OF Draft Plan  
Name: Draft Map C

Presentation to the County of LOS ANGELES  
CITIZENS REDISTRICTING COMMISSION

ARCBridge Consulting & Training Inc.  
[www.arcbridge.com](http://www.arcbridge.com)



# Plan Name: Draft Map C

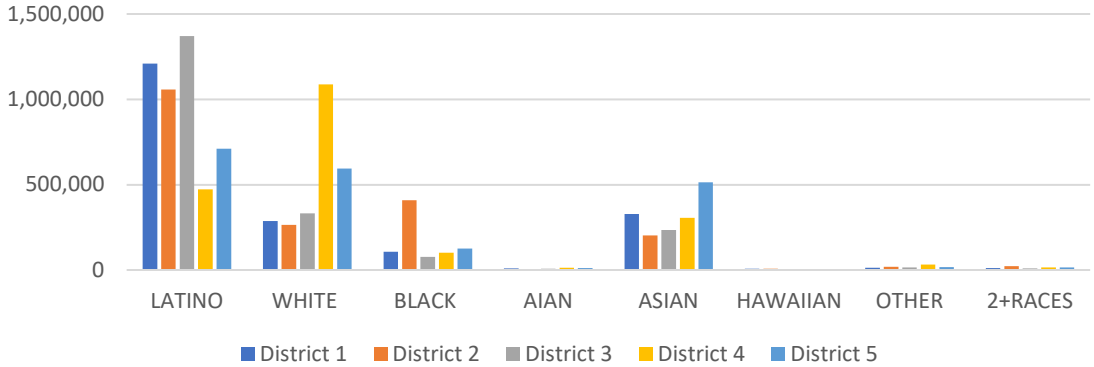


## Maximum Deviation – 3.61%

Name	Total Pop	Deviation	Deviation %
1	1,977,715	-31,870	-1.59%
2	1,993,817	-15,768	-0.78%
3	2,050,335	40,750	2.03%
4	2,033,004	23,419	1.17%
5	1,993,055	-16,530	-0.82%

District	Latino	%	White	%	Black	%	Asian	%
1	1,210,333	61.20%	287,372	14.53%	108,079	5.46%	328,125	16.59%
2	1,057,310	53.03%	265,157	13.30%	409,959	20.56%	203,619	10.21%
3	1,370,936	66.86%	331,506	16.17%	77,333	3.77%	235,305	11.48%
4	472,596	23.25%	1,087,347	53.48%	102,131	5.02%	306,029	15.05%
5	710,528	35.65%	594,559	29.83%	125,329	6.29%	515,014	25.84%

Ethnic and Racial Information by District



# CENSUS 2020 POPULATION AND CITIZEN VOTING AGE POPULATION

TOTAL POPULATION

	District 1	District 2	District 3	District 4	District 5
LATINO	1,210,333	1,057,310	1,370,936	472,596	710,528
LATINO %	61.20%	53.03%	66.86%	23.25%	35.65%
WHITE	287,372	265,157	331,506	1,087,347	594,559
WHITE%	14.53%	13.30%	16.17%	53.48%	29.83%
BLACK	108,079	409,959	77,333	102,131	125,329
BLACK %	5.46%	20.56%	3.77%	5.02%	6.29%
AIAN	9,552	6,690	7,665	13,261	12,091
AIAN %	0.48%	0.34%	0.37%	0.65%	0.61%
ASIAN	328,125	203,619	235,305	306,029	515,014
ASIAN %	16.59%	10.21%	11.48%	15.05%	25.84%
HAWAIIAN	7,974	7,593	2,161	4,874	3,037
HAWAIIAN %	0.40%	0.38%	0.11%	0.24%	0.15%
OTHER	14,017	19,708	15,458	31,394	17,882
OTHER %	0.71%	0.99%	0.75%	1.54%	0.90%
2+RACES	12,263	23,781	9,971	15,372	14,615
2+RACES%	0.62%	1.19%	0.49%	0.76%	0.73%
TOTAL	1,977,715	1,993,817	2,050,335	2,033,004	1,993,055

VOTING AGE POPULATION

	District 1	District 2	District 3	District 4	District 5
	896,249	762,948	1,027,734	360,083	515,719
	58.18%	49.63%	63.37%	21.36%	32.76%
	252,948	229,893	294,224	943,062	505,694
	16.42%	14.95%	18.14%	55.94%	32.12%
	83,524	326,794	65,352	83,032	94,628
	5.42%	21.26%	4.03%	4.93%	6.01%
	8,271	5,585	6,515	11,441	10,036
	0.54%	0.36%	0.40%	0.68%	0.64%
	274,823	173,804	207,942	249,420	422,623
	17.84%	11.30%	12.82%	14.79%	26.84%
	6,239	5,999	1,720	3,874	2,402
	0.40%	0.39%	0.11%	0.23%	0.15%
	9,950	14,228	10,939	24,078	12,968
	0.65%	0.93%	0.67%	1.43%	0.82%
	8,511	18,158	7,246	10,868	10,267
	0.55%	1.18%	0.45%	0.64%	0.65%
	1,540,515	1,537,409	1,621,672	1,685,858	1,574,337

CITIZEN VOTING AGE POPULATION

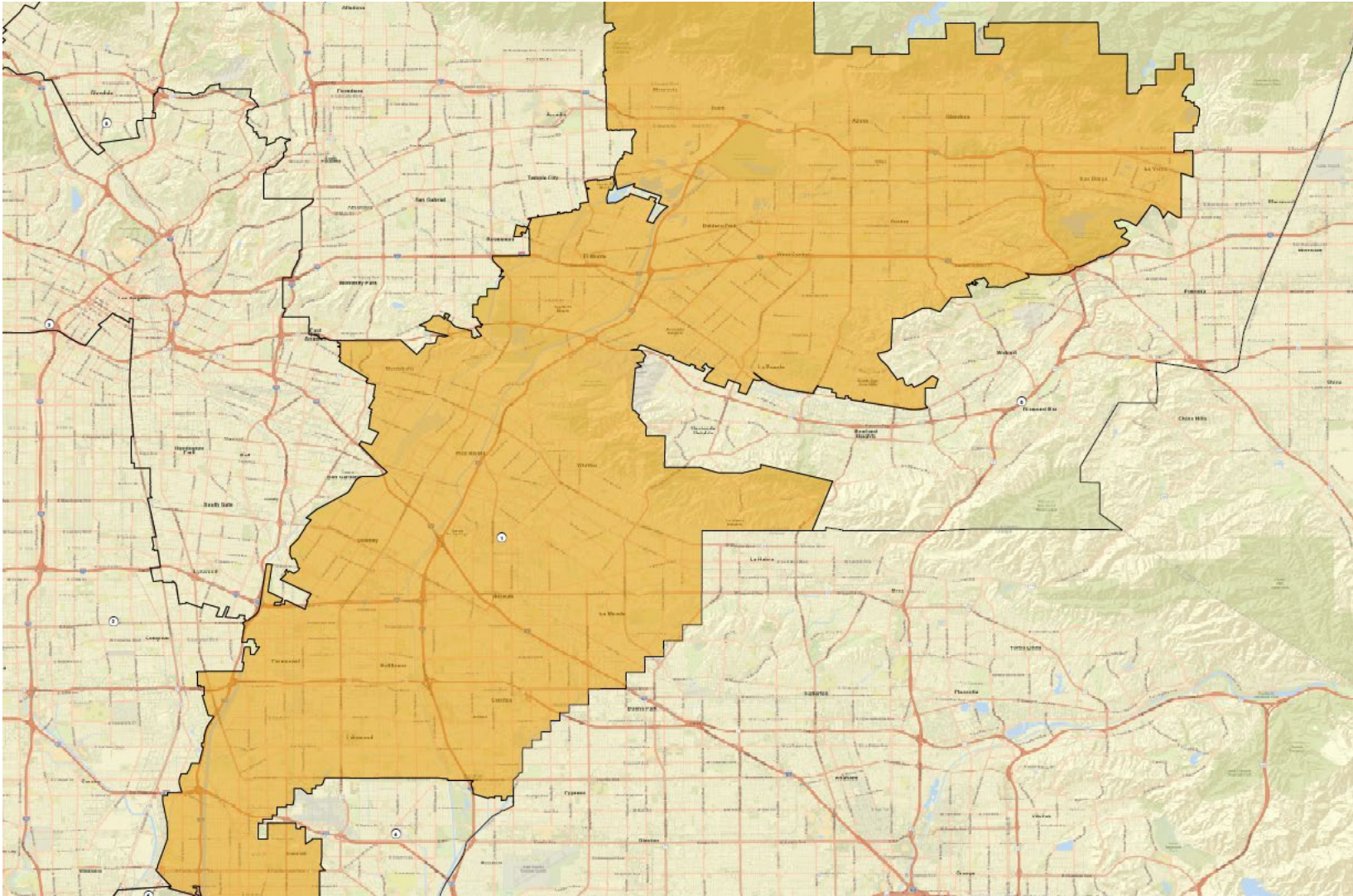
	District 1	District 2	District 3	District 4	District 5
	682,668	456,284	661,235	269,631	381,953
	54.09%	39.72%	57.56%	18.44%	29.53%
	271,546	210,487	264,996	908,372	488,277
	21.52%	18.32%	23.07%	62.11%	37.76%
	81,163	338,362	61,711	78,903	90,004
	6.43%	29.45%	5.37%	5.40%	6.96%
	N/A	N/A	N/A	N/A	N/A
	N/A	N/A	N/A	N/A	N/A
	208,197	124,101	148,741	185,625	315,106
	16.50%	10.80%	12.95%	12.69%	24.37%
	N/A	N/A	N/A	N/A	N/A
	N/A	N/A	N/A	N/A	N/A
	18,476	19,509	12,158	19,883	17,925
	1.46%	1.70%	1.06%	1.36%	1.39%
	N/A	N/A	N/A	N/A	N/A
	N/A	N/A	N/A	N/A	N/A
	1,262,050	1,148,743	1,148,840	1,462,414	1,293,264

## NUMBER OF SPLIT CITIES/CSAS, LA CITY NEIGHBORHOOD COUNCILS, COIS

Max Deviation	Number of Districts with Polsby Popper-Compactness Score of >.2	# Majority Minority Districts		Splits		Community of Interest Models (COI)		
		Based on Total Population	Based on CVAP	Consolidated Statistical Areas (CSAs) # CSAs	Neighborhood Councils	COI A	COI B	COI C
3.61	2	3	2	43	30	17	16	19

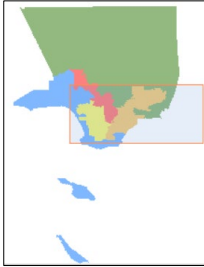
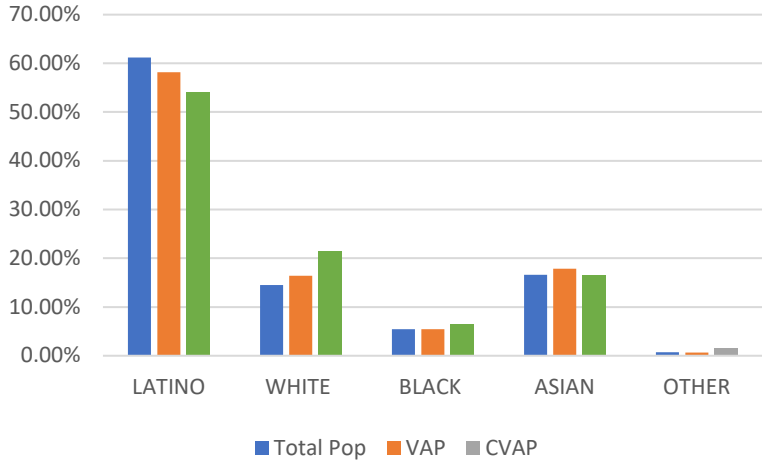


# District 1



Name	Total Pop	Deviation	Deviation %
1	1,977,715	-31,870	-1.59%

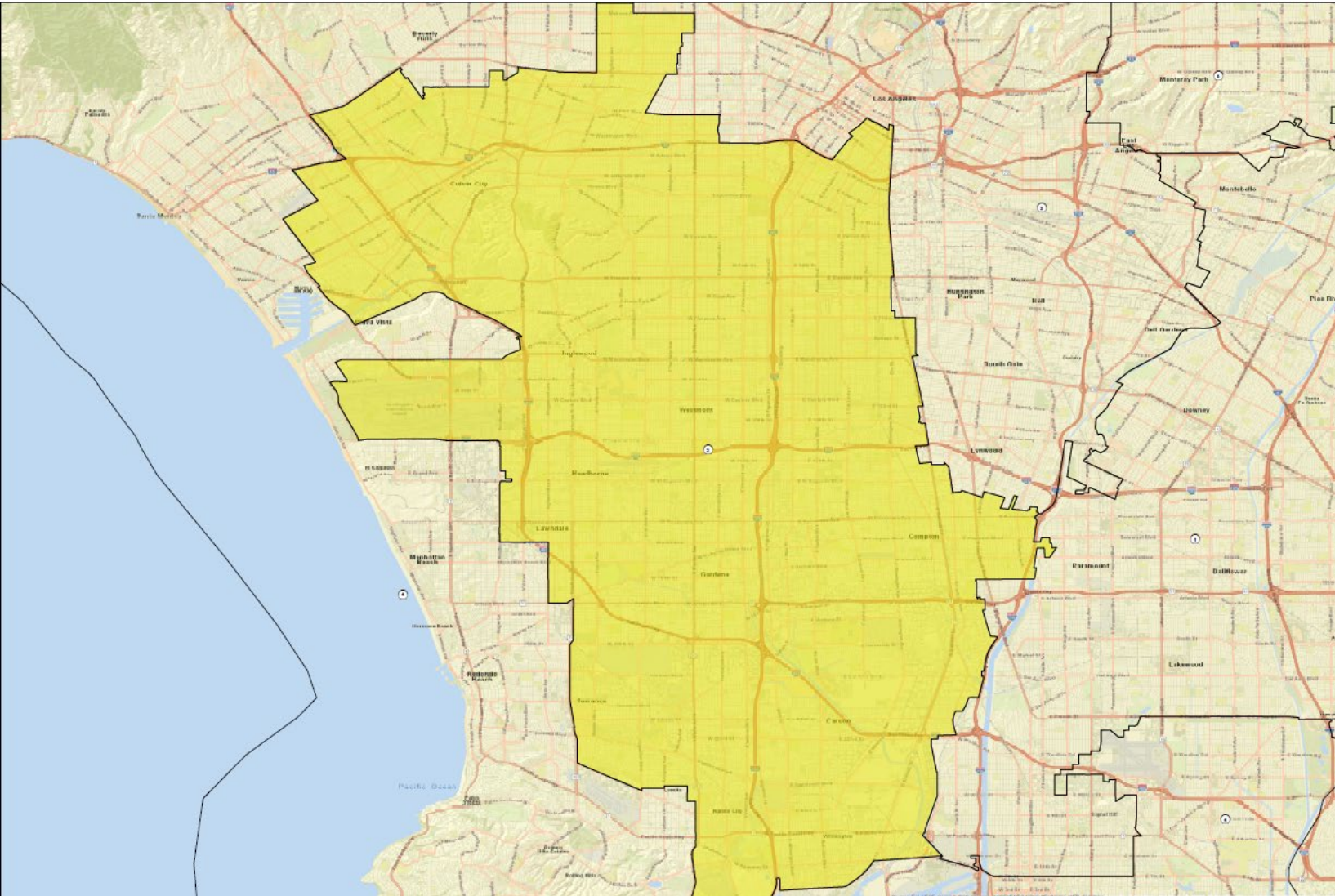
Total Pop, VAP, CVAP



District 1	Total Pop	VAP	CVAP
LATINO	61.20%	58.18%	54.09%
WHITE	14.53%	16.42%	21.52%
BLACK	5.46%	5.42%	6.43%
ASIAN	16.59%	17.84%	16.50%
OTHER	0.71%	0.65%	1.46%

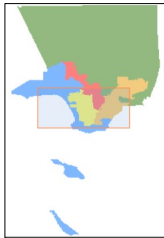
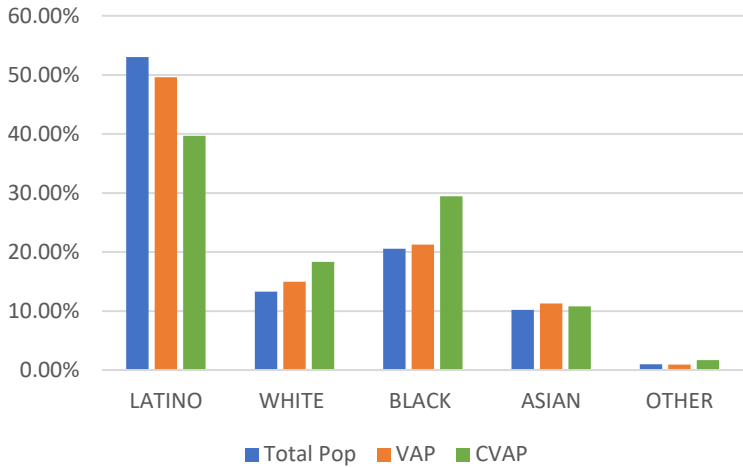


# District 2



Name	Total Pop	Deviation	Deviation %
2	1,993,817	-15,768	-0.78%

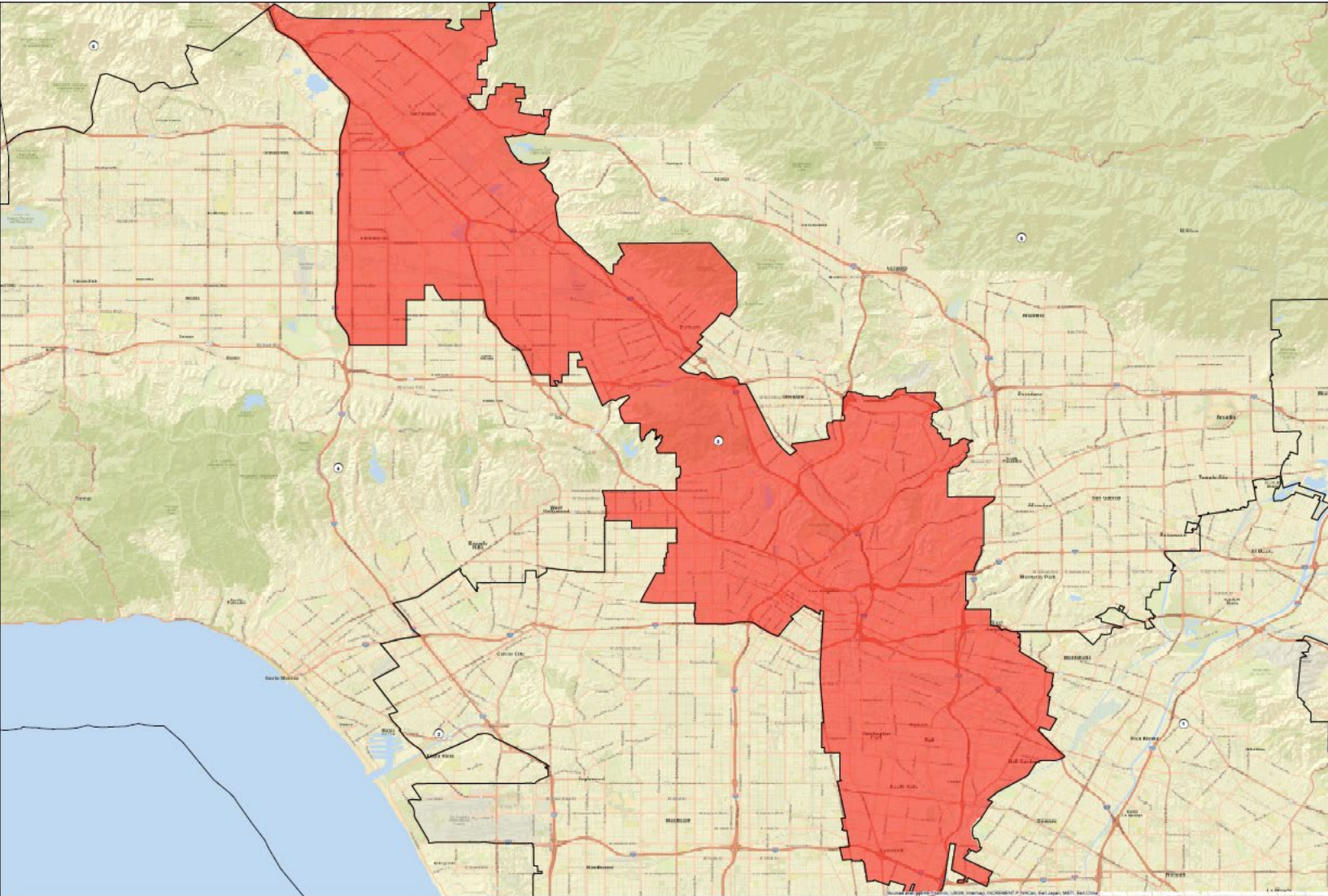
Total Pop, VAP, CVAP



District 2	Total Pop	VAP	CVAP
LATINO	53.03%	49.63%	39.72%
WHITE	13.30%	14.95%	18.32%
BLACK	20.56%	21.26%	29.45%
ASIAN	10.21%	11.30%	10.80%
OTHER	0.99%	0.93%	1.70%

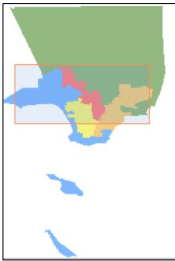
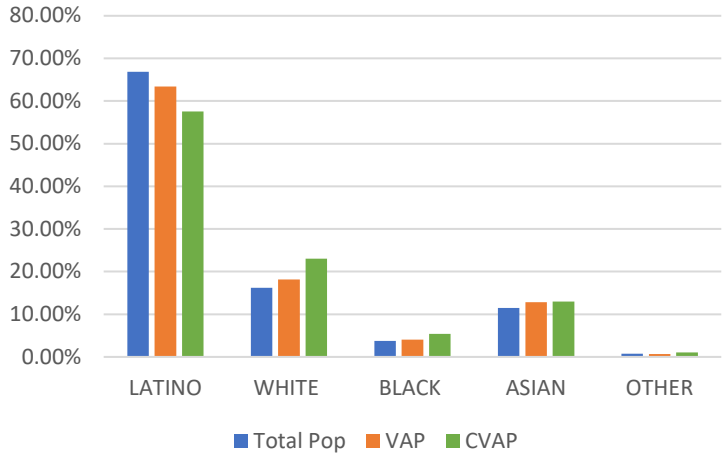


# District 3



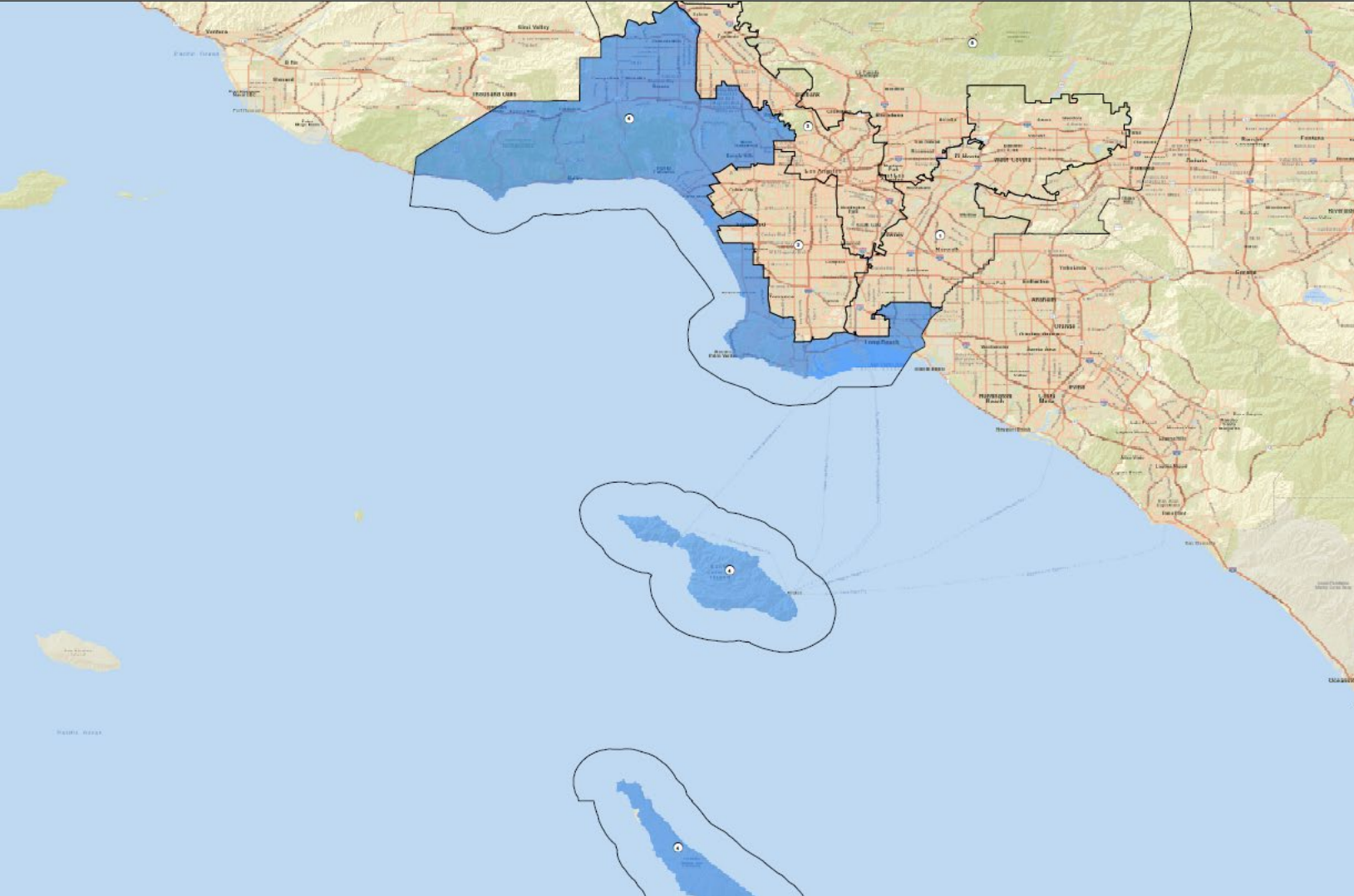
Name	Total Pop	Deviation	Deviation %
3	2,050,335	40,750	2.03%

Total Pop, VAP, CVAP



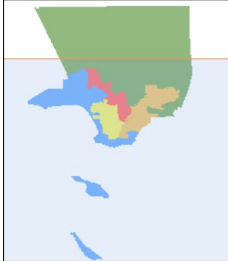
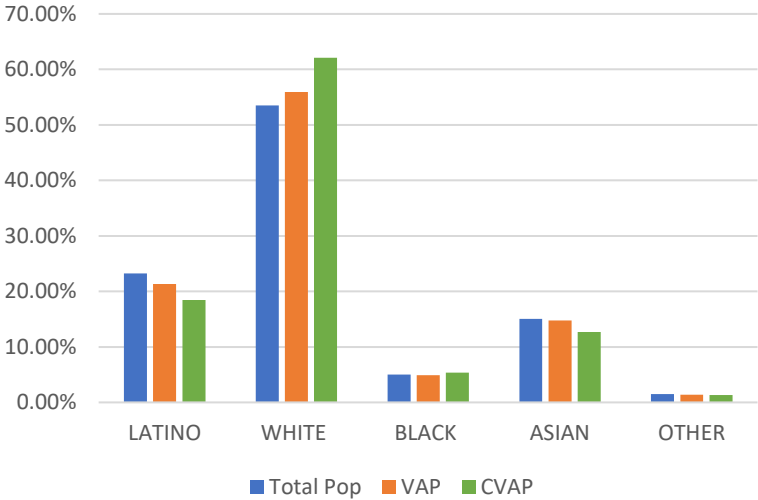
District 3	Total Pop	VAP	CVAP
LATINO	66.86%	63.37%	57.56%
WHITE	16.17%	18.14%	23.07%
BLACK	3.77%	4.03%	5.37%
ASIAN	11.48%	12.82%	12.95%
OTHER	0.75%	0.67%	1.06%

# District 4



Name	Total Pop	Deviation	Deviation %
4	2,033,004	23,419	1.17%

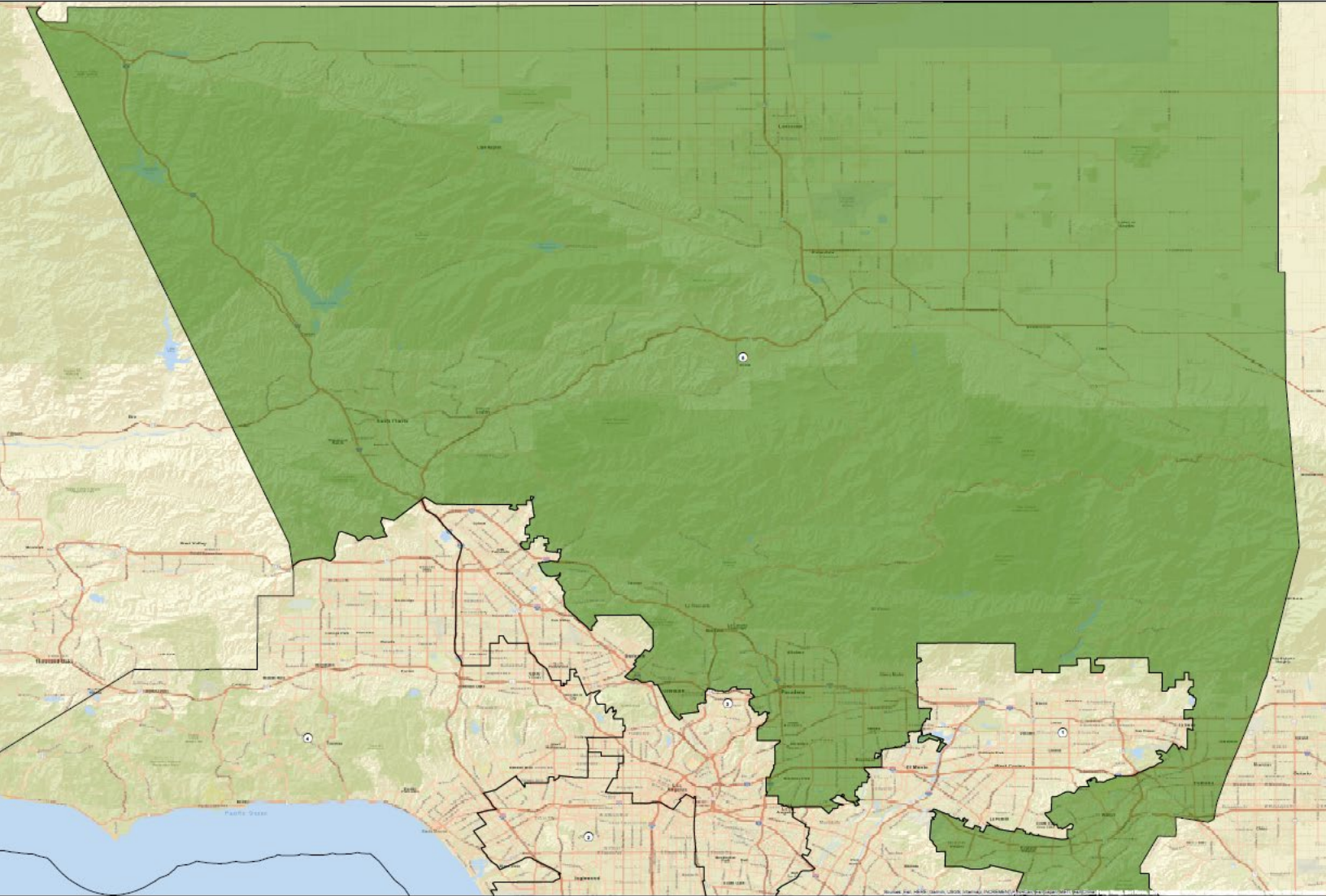
Total Pop, VAP, CVAP



District 4	Total Pop	VAP	CVAP
LATINO	23.25%	21.36%	18.44%
WHITE	53.48%	55.94%	62.11%
BLACK	5.02%	4.93%	5.40%
ASIAN	15.05%	14.79%	12.69%
OTHER	1.54%	1.43%	1.36%

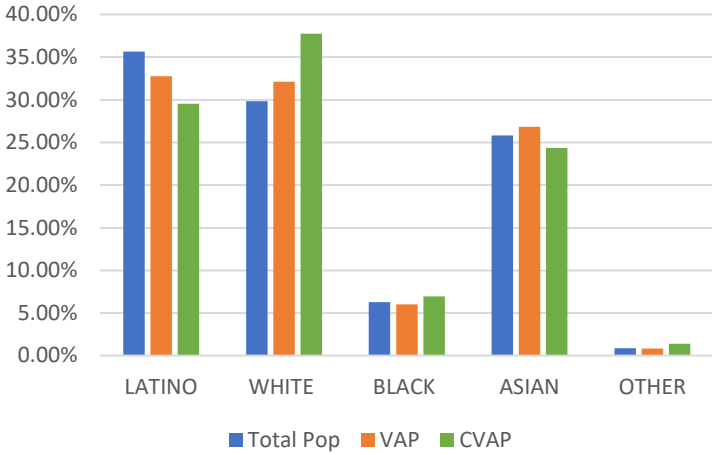


# District 5



Name	Total Pop	Deviation	Deviation %
5	1,993,055	-16,530	-0.82%

Total Pop, VAP, CVAP



District 5	Total Pop	VAP	CVAP
LATINO	35.65%	32.76%	29.53%
WHITE	29.83%	32.12%	37.76%
BLACK	6.29%	6.01%	6.96%
ASIAN	25.84%	26.84%	24.37%
OTHER	0.90%	0.82%	1.39%