



LOS ANGELES COUNTY **REDISTRICTING 2021**

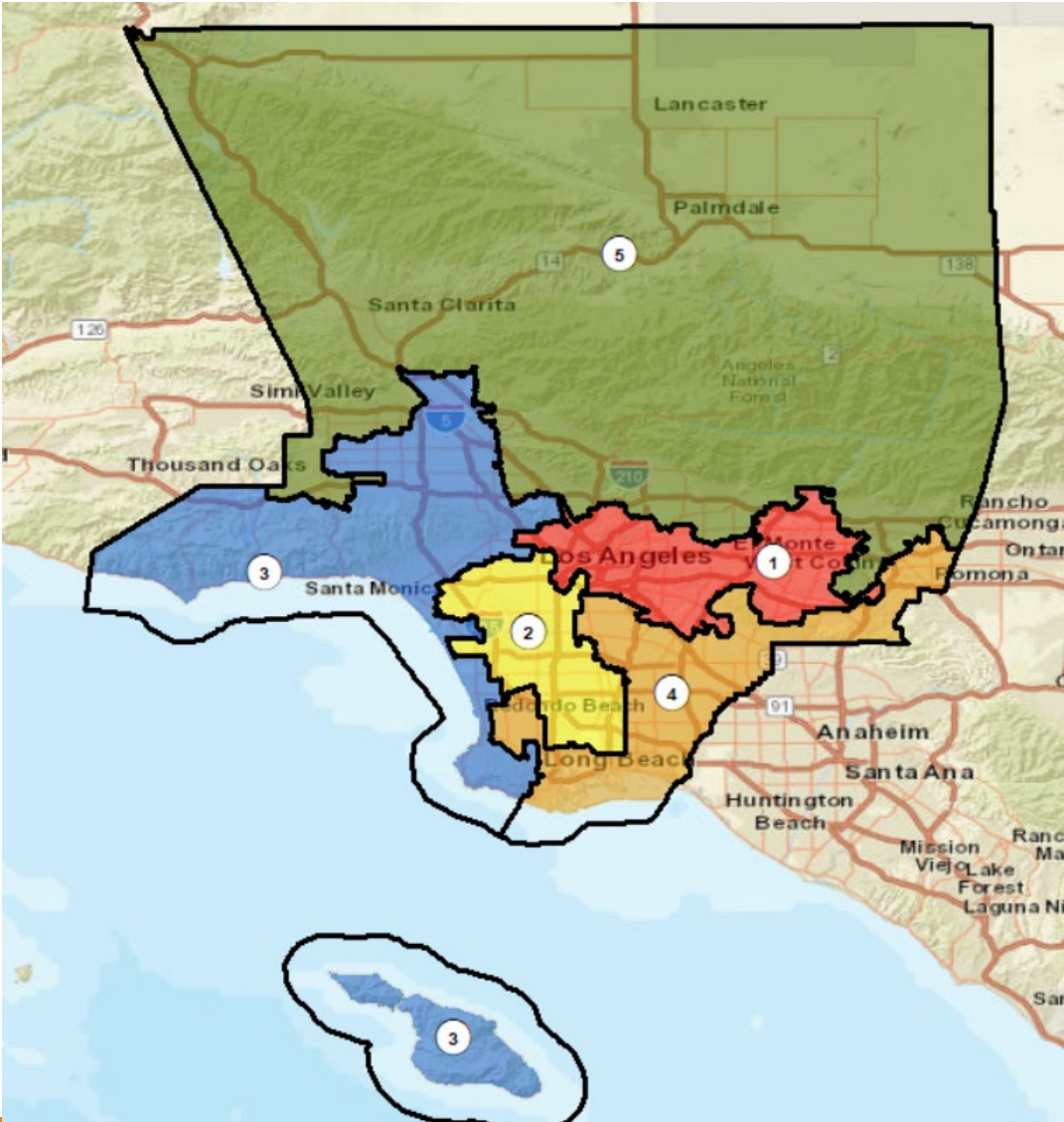
ANALYSIS OF Draft Plan
Name: Draft Map A

Presentation to the County of LOS ANGELES
CITIZENS REDISTRICTING COMMISSION

ARCBridge Consulting & Training Inc.
www.arcbridge.com



Plan Name: Draft Map A

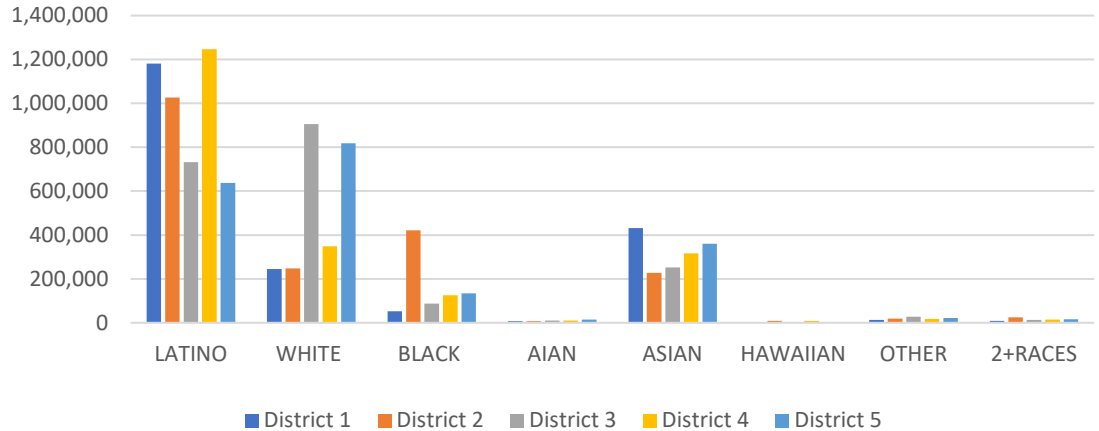


Maximum Deviation – 7.23%

Name	Total Pop	Deviation	Deviation %
1	1,942,986	-66,599	-3.31%
2	1,980,711	-28,874	-1.44%
3	2,031,020	21,435	1.07%
4	2,088,372	78,787	3.92%
5	2,004,837	-4,748	-0.24%

District	Latino	%	White	%	Black	%	Asian	%
1	1,180,718	60.77%	245,646	12.64%	52,993	2.73%	432,100	22.24%
2	1,026,064	51.80%	247,249	12.48%	421,915	21.30%	227,137	11.47%
3	731,615	36.02%	905,494	44.58%	87,481	4.31%	252,292	12.42%
4	1,246,664	59.70%	349,027	16.71%	125,648	6.02%	316,878	15.17%
5	636,642	31.76%	818,525	40.83%	134,794	6.72%	359,685	17.94%

Ethnic and Racial Information by District



CENSUS 2020 POPULATION AND CITIZEN VOTING AGE POPULATION

TOTAL POPULATION

	District 1	District 2	District 3	District 4	District 5
LATINO	1,180,718	1,026,064	731,615	1,246,664	636,642
LATINO %	60.77%	51.80%	36.02%	59.70%	31.76%
WHITE	245,646	247,249	905,494	349,027	818,525
WHITE%	12.64%	12.48%	44.58%	16.71%	40.83%
BLACK	52,993	421,915	87,481	125,648	134,794
BLACK %	2.73%	21.30%	4.31%	6.02%	6.72%
AIAN	7,145	6,719	10,637	10,537	14,221
AIAN %	0.37%	0.34%	0.52%	0.50%	0.71%
ASIAN	432,100	227,137	252,292	316,878	359,685
ASIAN %	22.24%	11.47%	12.42%	15.17%	17.94%
HAWAIIAN	2,142	8,224	3,374	8,690	3,209
HAWAIIAN %	0.11%	0.42%	0.17%	0.42%	0.16%
OTHER	13,043	19,149	27,191	16,893	22,183
OTHER %	0.67%	0.97%	1.34%	0.81%	1.11%
2+RACES	9,199	24,254	12,936	14,035	15,578
2+RACES%	0.47%	1.22%	0.64%	0.67%	0.78%
TOTAL	1,942,986	1,980,711	2,031,020	2,088,372	2,004,837

VOTING AGE POPULATION

	District 1	District 2	District 3	District 4	District 5
	899,314	748,420	551,969	918,011	461,981
	57.50%	48.19%	33.24%	56.46%	29.05%
	222,865	217,148	783,874	308,691	695,549
	14.25%	13.98%	47.21%	18.99%	43.73%
	46,331	344,521	73,393	99,635	102,500
	2.96%	22.18%	4.42%	6.13%	6.44%
	6,065	5,602	9,201	9,124	11,902
	0.39%	0.36%	0.55%	0.56%	0.75%
	371,509	197,808	209,270	261,541	288,515
	23.75%	12.74%	12.60%	16.09%	18.14%
	1,712	6,481	2,668	6,852	2,560
	0.11%	0.42%	0.16%	0.42%	0.16%
	9,636	14,421	20,773	12,253	16,626
	0.62%	0.93%	1.25%	0.75%	1.05%
	6,613	18,576	9,224	9,766	10,813
	0.42%	1.20%	0.56%	0.60%	0.68%
	1,564,045	1,552,977	1,660,372	1,625,873	1,590,446

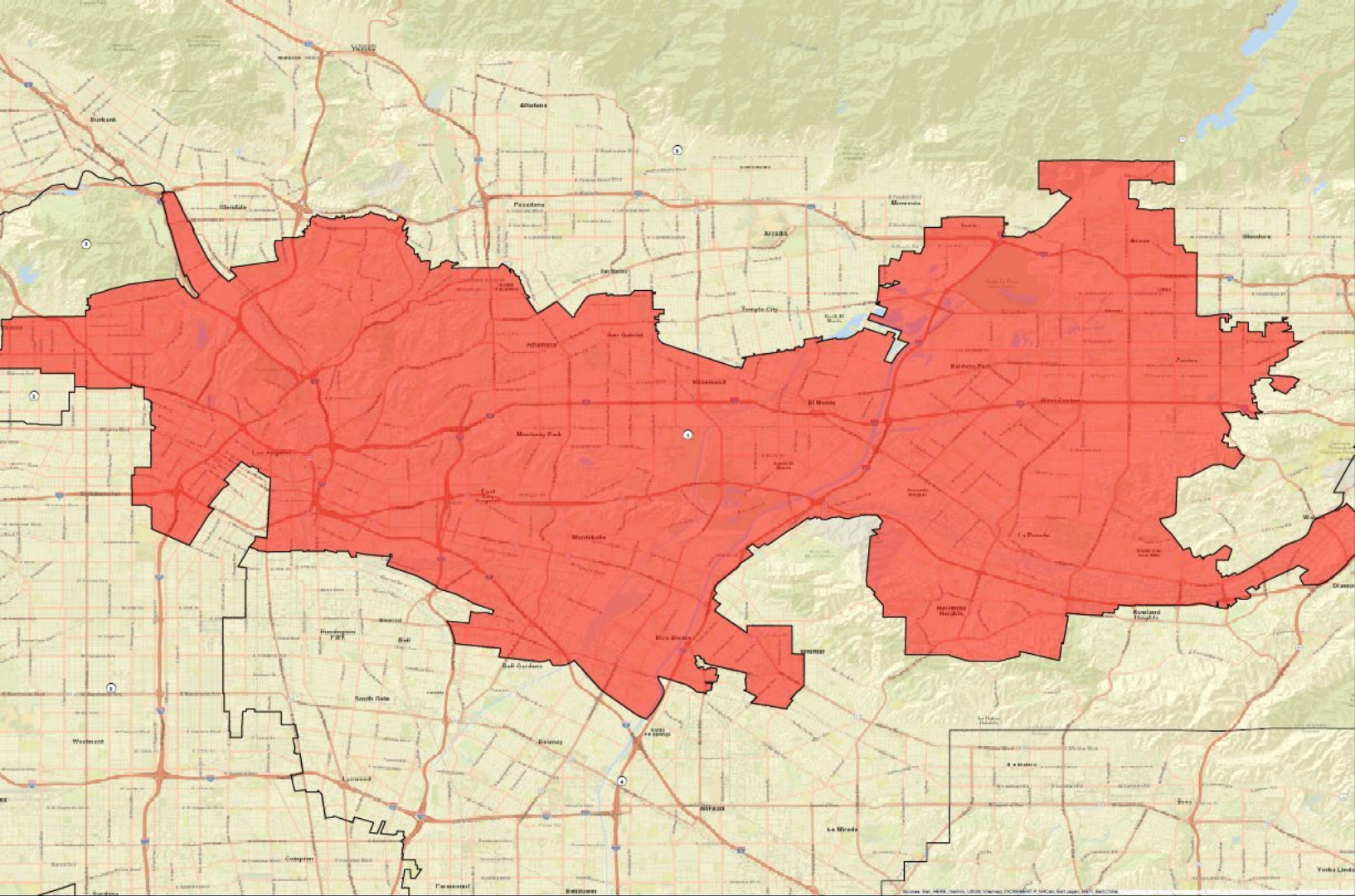
CITIZEN VOTING AGE POPULATION

	District 1	District 2	District 3	District 4	District 5
	654,108	435,607	377,060	641,289	343,705
	54.52%	38.33%	27.73%	50.15%	25.64%
	214,221	193,892	744,143	324,506	667,039
	17.85%	17.06%	54.73%	25.38%	49.76%
	43,226	350,614	65,533	94,362	96,371
	3.60%	30.85%	4.82%	7.38%	7.19%
	N/A	N/A	N/A	N/A	N/A
	N/A	N/A	N/A	N/A	N/A
	275,558	135,032	157,316	200,178	213,725
	22.97%	11.88%	11.57%	15.65%	15.94%
	N/A	N/A	N/A	N/A	N/A
	N/A	N/A	N/A	N/A	N/A
	12,718	21,221	15,574	18,471	19,730
	1.06%	1.87%	1.15%	1.44%	1.47%
	N/A	N/A	N/A	N/A	N/A
	N/A	N/A	N/A	N/A	N/A
	1,199,831	1,136,366	1,359,626	1,278,806	1,340,570

NUMBER OF SPLIT CITIES/CSAS, LA CITY NEIGHBORHOOD COUNCILS, COIS

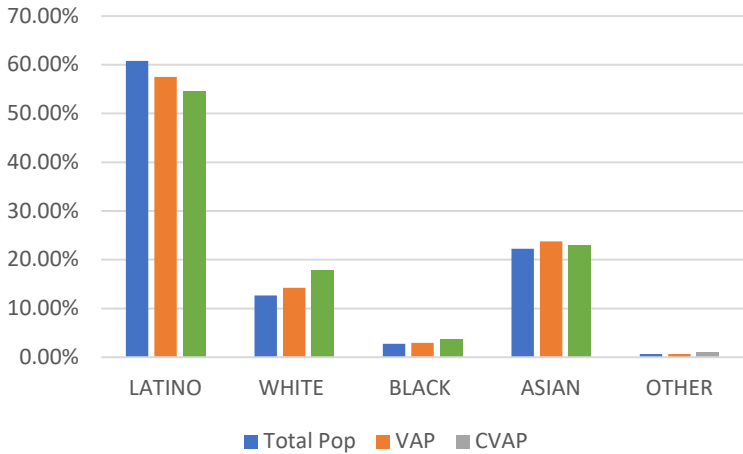
Max Deviation	Number of Districts with Polsby Popper-Compactness Score of >.2	# Majority Minority Districts		Splits		Community of Interest Models (COI)		
		Based on Total Population	Based on CVAP	Consolidated Statistical Areas (CSAs) # CSAs	Neighborhood Councils	COI A	COI B	COI C
7.23	2	3	2	29	12	13	12	14

District 1



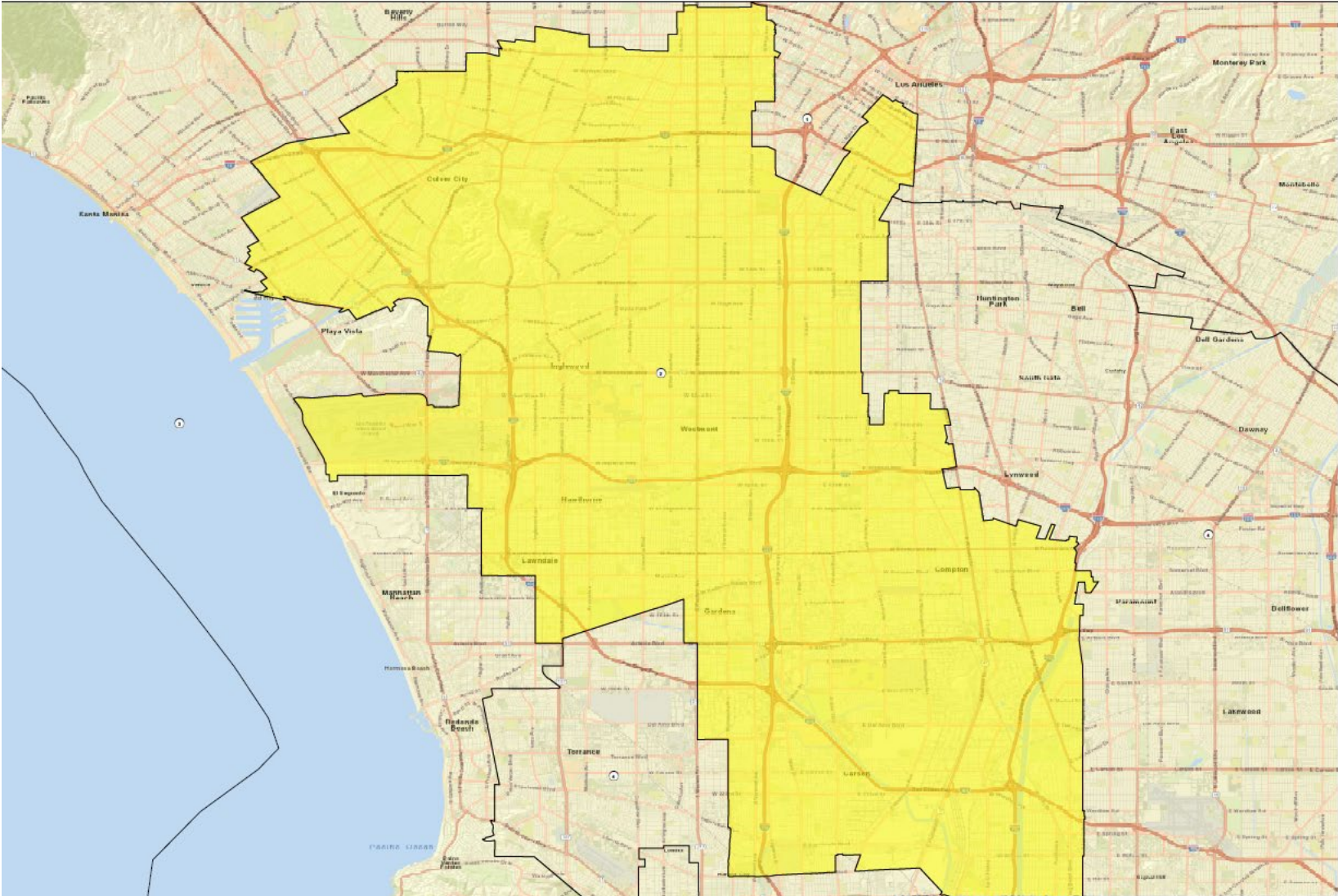
Name	Total Pop	Deviation	Deviation %
1	1,942,,986	-66599	-3.31%

Total Pop, VAP, CVAP



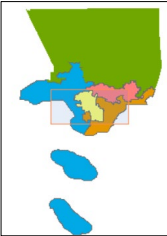
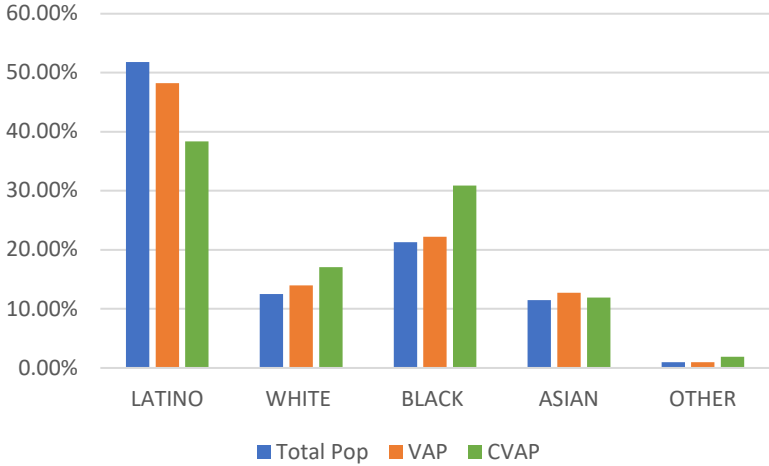
District 1	Total Pop	VAP	CVAP
LATINO	60.77%	57.50%	54.52%
WHITE	12.64%	14.25%	17.85%
BLACK	2.73%	2.96%	3.60%
ASIAN	22.24%	23.75%	22.97%
OTHER	0.67%	0.62%	1.06%

District 2



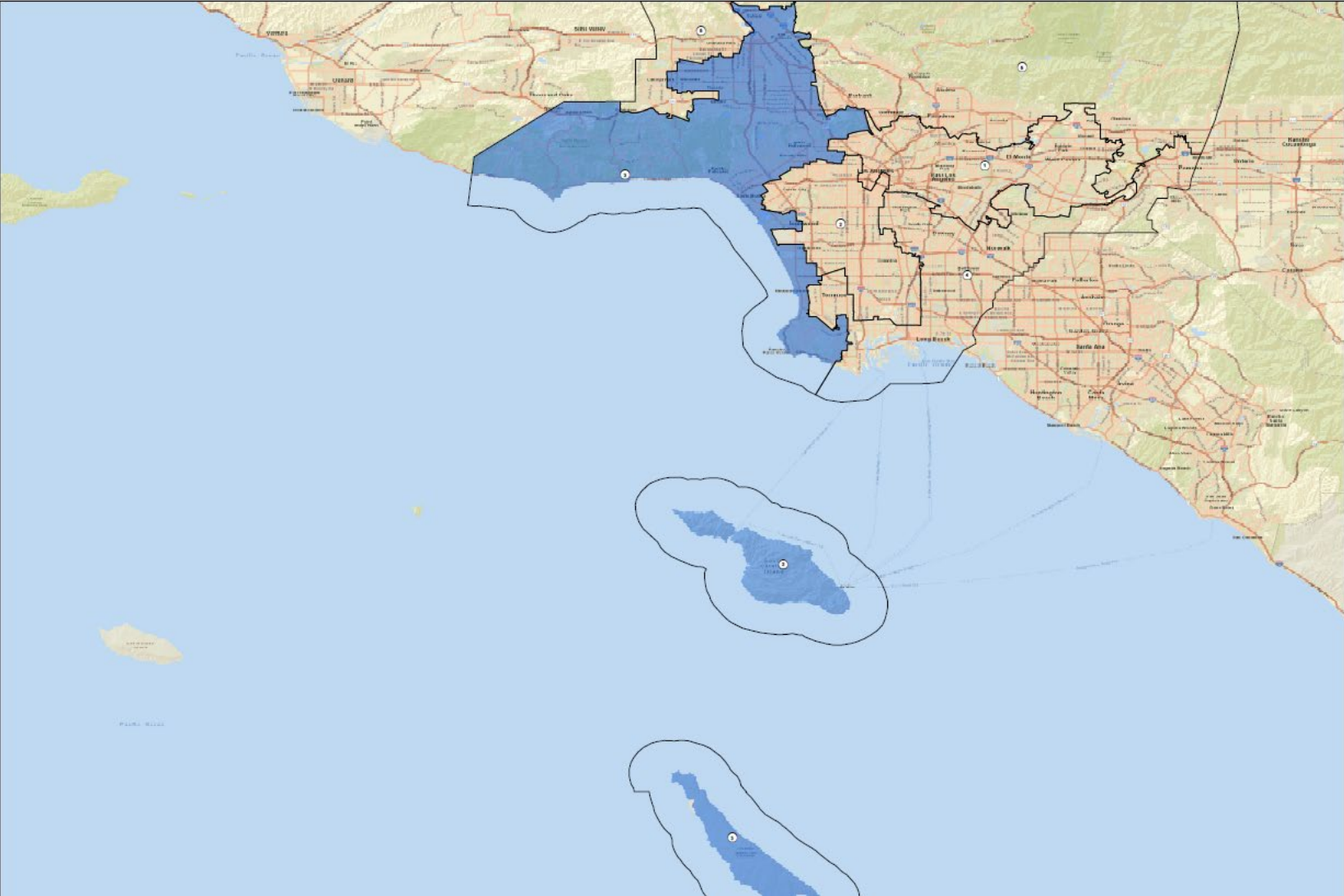
Name	Total Pop	Deviation	Deviation %
2	1,980,711	-28,874	-1.44%

Total Pop, VAP, CVAP



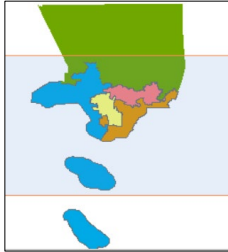
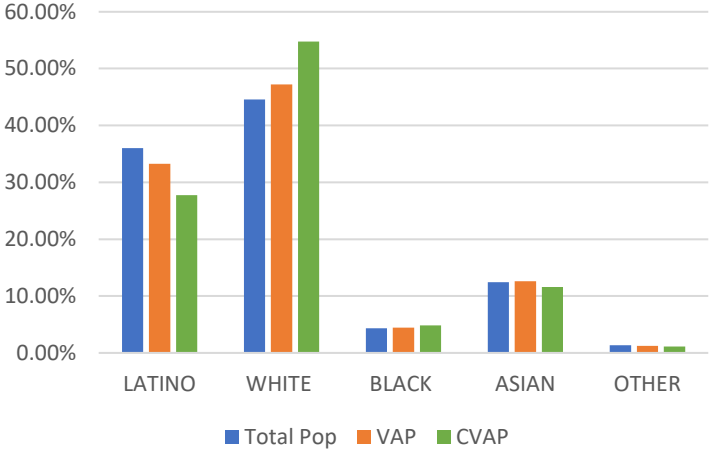
District 2	Total Pop	VAP	CVAP
LATINO	51.80%	48.19%	38.33%
WHITE	12.48%	13.98%	17.06%
BLACK	21.30%	22.18%	30.85%
ASIAN	11.47%	12.74%	11.88%
OTHER	0.97%	0.93%	1.87%

District 3



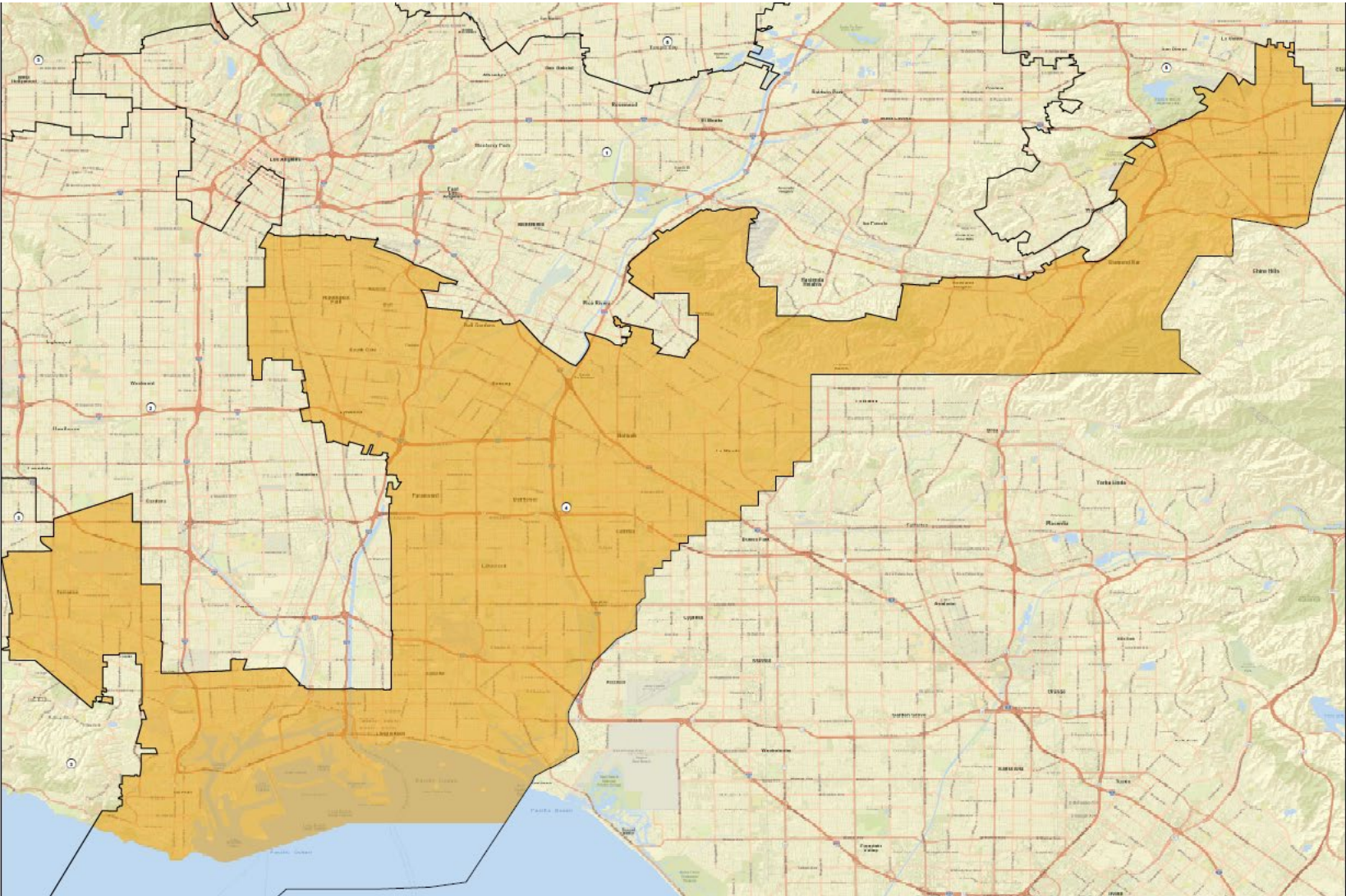
Name	Total Pop	Deviation	Deviation %
3	2,031,020	21,435	1.07%

Total Pop, VAP, CVAP



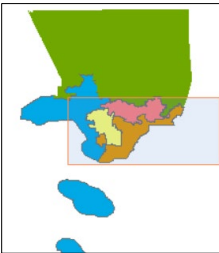
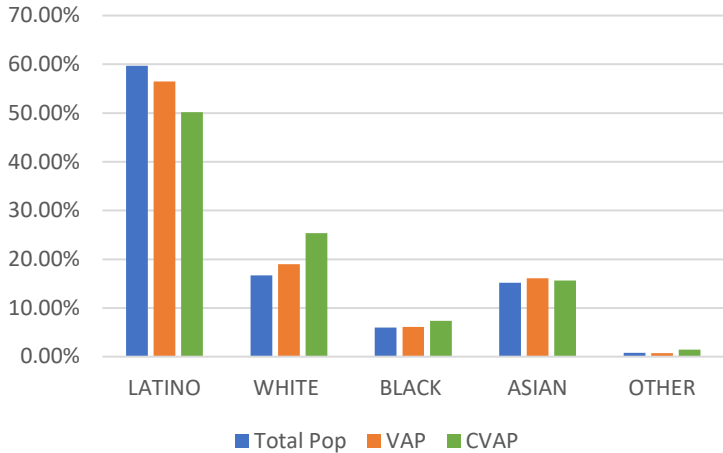
District 3	Total Pop	VAP	CVAP
LATINO	36.02%	33.24%	27.73%
WHITE	44.58%	47.21%	54.73%
BLACK	4.31%	4.42%	4.82%
ASIAN	12.42%	12.60%	11.57%
OTHER	1.34%	1.25%	1.15%

District 4



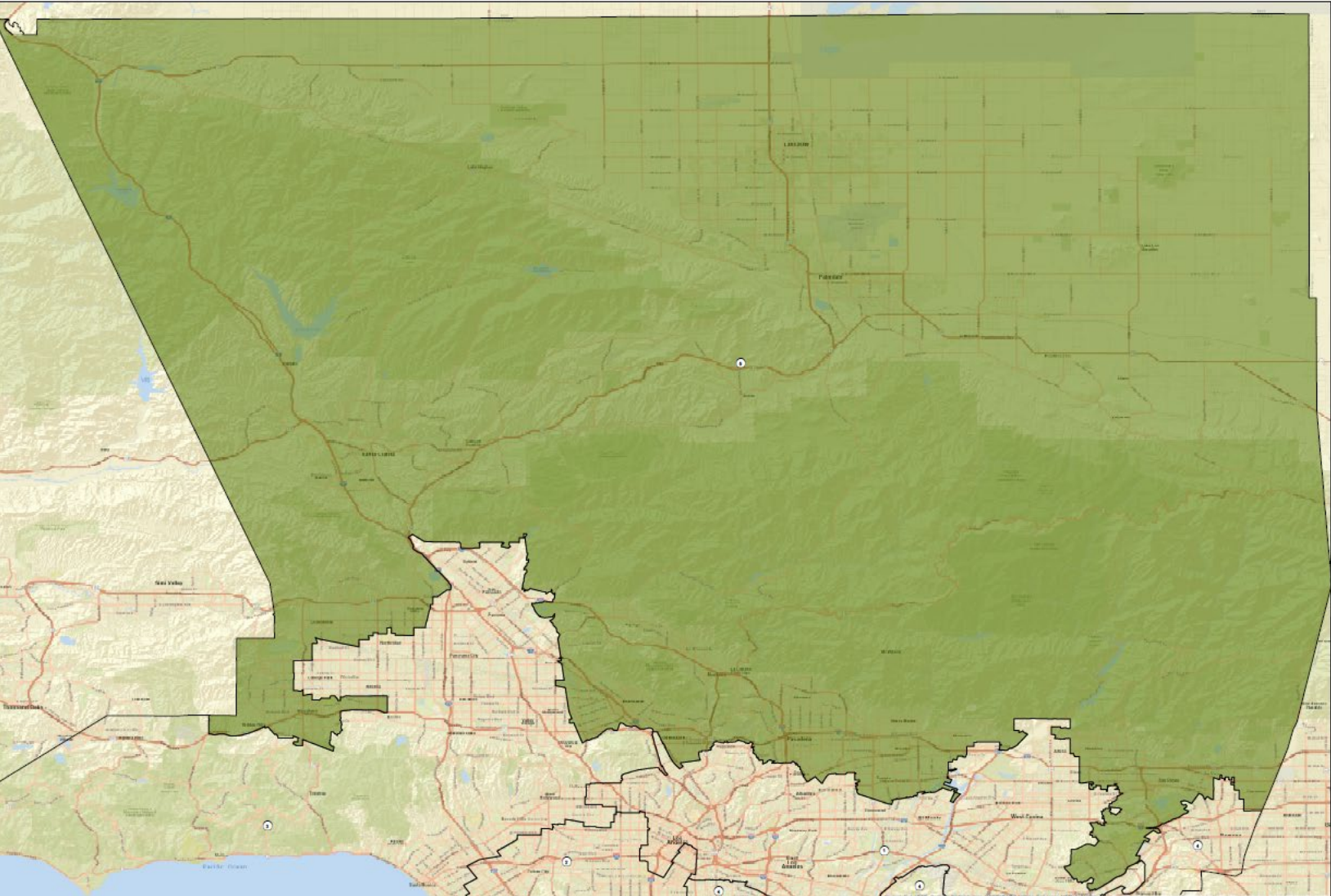
Name	Total Pop	Deviation	Deviation %
4	2,088,372	78,787	3.92%

Total Pop, VAP, CVAP



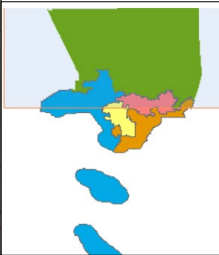
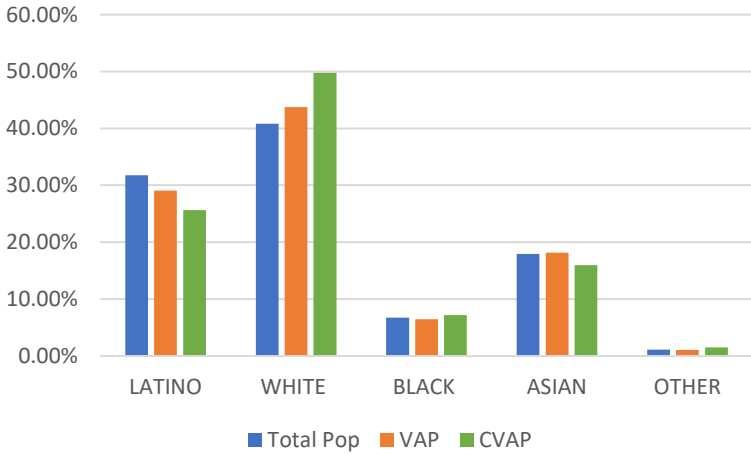
District 4	Total Pop	VAP	CVAP
LATINO	59.70%	56.46%	50.15%
WHITE	16.71%	18.99%	25.38%
BLACK	6.02%	6.13%	7.38%
ASIAN	15.17%	16.09%	15.65%
OTHER	0.81%	0.75%	1.44%

District 5



Name	Total Pop	Deviation	Deviation %
5	2,004,837	-4,748	-0.24%

Total Pop, VAP, CVAP



District 5	Total Pop	VAP	CVAP
LATINO	31.76%	29.05%	25.64%
WHITE	40.83%	43.73%	49.76%
BLACK	6.72%	6.44%	7.19%
ASIAN	17.94%	18.14%	15.94%
OTHER	1.11%	1.05%	1.47%