

# Citizens Redistricting Commission (CRC)

**Comisión de Redelimitación de Distritos (CRC)  
de ciudadanos del condado de los Ángeles**

**LIVE STREAM WILL BEGIN SHORTLY**

<https://www.youtube.com/LACountyRedistricting/>



LOS ANGELES COUNTY  
**REDISTRICTING**  
2021





LOS ANGELES COUNTY  
**REDISTRICTING 2021**

# **Los Angeles County Citizens Redistricting Commission (CRC)**

## **Comisión de Redelimitación de Distritos (CRC) de ciudadanos del condado de los Ángeles**

**November 29, 2021**

**El 29 de noviembre de 2021**





# 1. Call to Order

# ATTENTION ALL PARTICIPANTS

## You must select your preferred language!

1. Click on “**Interpretation**” at the bottom of your screen
  2. Select English or Spanish
- You then can choose to mute the original audio for a clearer interpretation.

# ATENCIÓN TODOS LOS PARTICIPANTES

## Debe elegir el idioma que prefiere!

1. Haga clic en la “**Interpretación**” abajo en su pantalla a mano derecha
  2. Elija Inglés o Español
- Luego, puede optar por "silenciar el audio original" para escuchar una interpretación más clara.



**IF YOU DO NOT CHOOSE A LANGUAGE, YOU WILL NOT HEAR THE INTERPRETATION.**  
**SÍ USTED NO SELECCIONA UN IDIOMA, NO PODRÁ ESCUCHAR LA INTERPRETACIÓN.**

# Notice



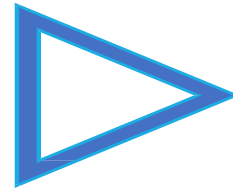
LOS ANGELES COUNTY  
**REDISTRICTING 2021**

This meeting is streaming live at:

<https://www.youtube.com/LACountyRedistricting/>

This meeting is being recorded and will be posted on LA County CRC website:

<https://redistricting.lacounty.gov>



**Deseamos recordarle al público que esta audiencia pública  
se está grabando y transmitiendo en directo en**

<https://www.youtube.com/LACountyRedistricting>

**El enlace de la grabación también se publicará y podrán acceder a ella a través del sitio  
web del Condado de Los Ángeles**

<https://redistricting.lacounty.gov>





# Notice

**During the CRC meeting, if you need technical assistance,  
use the Q&A button at the bottom of your Zoom Webinar screen.  
Thai Le, LA County CRC Clerk, can assist you.**

**Si en algún momento los miembros del público tienen alguna dificultad técnica, por  
favor envíenme un mensaje a mí, Thai Le,  
y haremos todo lo posible por solucionar el problema.**



## 2. Roll Call

Ahora pasaré lista. Les recuerdo que los nombres de los comisionados se llamarán en orden alfabético rotativo según su apellido. Comisionados, estén preparados para desenmudecer su micrófono y responder cuando llame su nombre.

1. Commissioner Jean Franklin
2. Commissioner David Holtzman
3. Commissioner Mary Kenney
4. Co-Chair Daniel Mayeda
5. Commissioner Mark Mendoza
6. Commissioner Apolonio Morales
7. Commissioner Nelson Obregon
8. Commissioner Priscilla Orpinela-Segura
9. Commissioner Hailes Soto
10. Commissioner Saira Soto
11. Commissioner Brian Stecher
12. Commissioner John Vento
13. Co-Chair Carolyn Williams
14. Commissioner Doreena Wong

1. Comisionada Jean Franklin
2. Comisionado David Holtzman
3. Comisionada Mary Kenney
4. Codirector Daniel Mayeda
5. Comisionado Mark Mendoza
6. Comisionado Apolonio Morales
7. Comisionado Nelson Obregon
8. Comisionada Priscilla Orpinela-Segura
9. Comisionado Hailes Soto
10. Comisionada Saira Soto
11. Comisionado Brian Stecher
12. Comisionado John Vento
13. Codirectora Carolyn Williams
14. Comisionada Doreena Wong





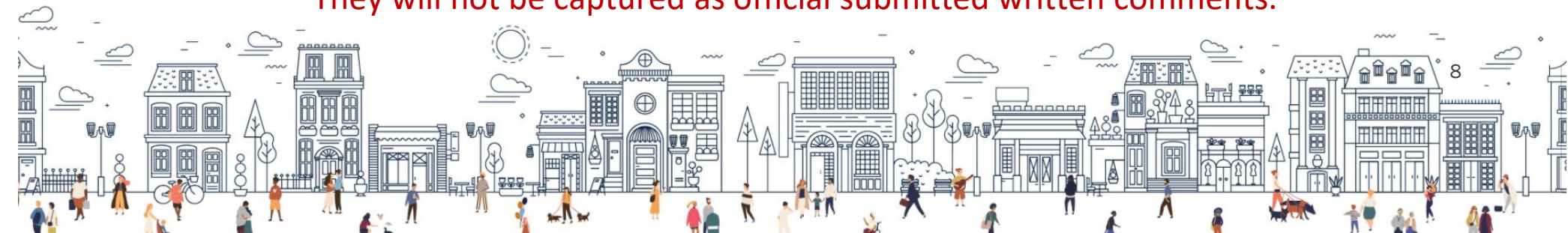
# Public Comments: How to Make an Oral Public Comment

Type your name, affiliation/organization, and Agenda Item # into QA if you want to make an oral Public Comment.

If on a phone line, press \*9 to raise your hand. Once called upon, press \*6 to unmute and speak.

- Each Person Gets 1 Minute unless the Co-Chairs determine otherwise.
- Each person only gets 1 opportunity to speak.
- When you speak, share your name and affiliation at the beginning.
- Cada persona tendrá la oportunidad de hablar por 1 minuto.
- Cada persona solo tiene 1 oportunidad para hablar.
- Cuando comience a hacer su comentario, por favor comparta su nombre y cualquier afiliación que tenga.

**Do not type written comments into QA.  
They will not be captured as official submitted written comments.**







# How to Submit Written Public Comments

The public can submit written comments  
on Agenda items at:

<https://publiccomment.redistricting.lacounty.gov/>

Si no quiere hablar pero quiere hacer un comentario  
público por escrito, use este enlace:

<https://publiccomment.redistricting.lacounty.gov/>

**LOS ANGELES COUNTY REDISTRICTING 2021 PUBLIC COMMENT**

Meeting Date: 11/10/2021

First Name\*  MI  Last Name\*

Email  Phone

Address  City  State  Zip Code

Name of Organization Represented

Attach Word, Excel, or PDF supporting document(s). (5 attachments limit)

Agenda Items

Agenda	Title
<input type="checkbox"/>	4. General Public Comment
<input type="checkbox"/>	6.a. Racially Polarized Voting Analysis Report on Current 4 Map Options
<input type="checkbox"/>	6.b. Review and Discussion of public input on map options and submitted maps, including Commissioners' observations and suggested modifications, and possible direction to ARCBridge to prepare modified or new maps for future consideration
<input type="checkbox"/>	OPTION A Draft Map Chosen By Commissioners for Further Public Input and Discussion - Option A



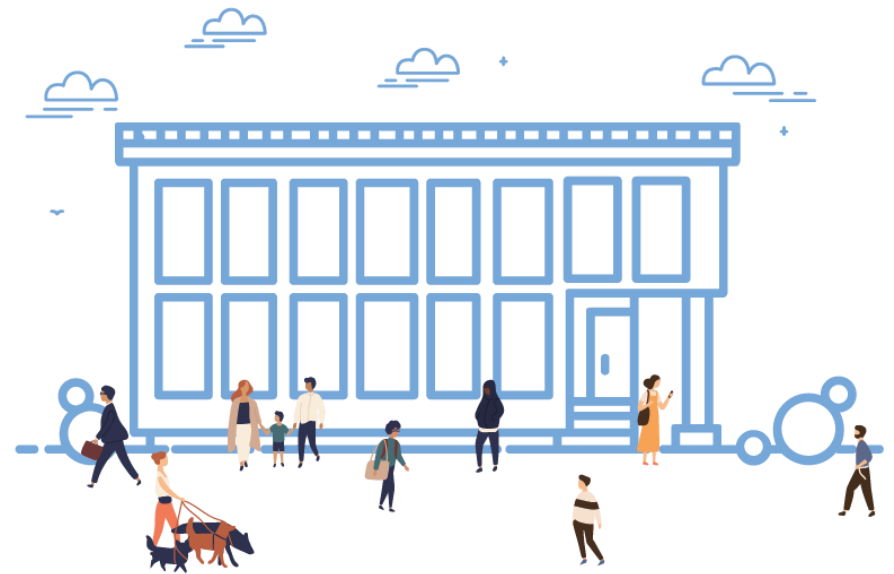
# 3. Approval of Agenda

## Co-Chair Carolyn Williams



## **4. Consent Items – Approval of Minutes – Co-Chair Daniel Mayeda**

- a. Review and take appropriate action on the Draft Minutes: November 22, 2021





## **5. Action/Discussion Items**

*5a. Review and Discussion of DRAFT Map Options, including modifications made by the Ad Hoc Working Groups, Commissioners' observations, and the public's suggested modifications, and Potential Direction to ARCBridge/Staff Regarding Map Modifications — Co-Chairs Dan Mayeda and Carolyn Williams*



# Los Angeles County Citizens Redistricting Commission (CRC)

Map Options B-1 and F Chosen by Commissioners for  
Further Public Input and Discussion at Upcoming Public Hearings



Option B-1

Option B modified: Keep Burbank together; put Santa Monica in its entirety in SD4. T...

Explore



Option B-1 (ESRI Layer View)

Option B modified: Keep Burbank together; put Santa Monica in its entirety in SD4. T...

Explore



Option F

ARCBridge Analysis of Option F. To view ESRI Layer View, click: <https://redistricting...>

Explore



Option F (ESRI Layer View)

Explore





# Suggested Map Modifications

---

See Commissioner Worksheets





## **Ad Hoc Working Groups prepared draft Maps 064, 065, 066 as conceptual frameworks for further refinement, public comment, and software/criteria testing**

**Focused on “unsplitting” cities and unincorporated areas that should be kept together**

### **Clarification on the Rules of Deviation**

- The draft Ad Hoc Working Group map options (e.g., Map OP 066) need to be adjusted to eliminate deviations greater than 10% between the highest and lowest population districts.

### **Other Notes/Updates**

- Map 064 does not incorporate Note 19, which indicated Cerritos, Gateway cities, and Norwalk were moved to SD4 to balance population among the districts and to increase population in SD4.
- The details on “changes and reasons” PDF for Map OP 066. The worksheet indicates modification of moving Sylmar and Sun Valley to SD1, which is not show in the map.





# Los Angeles County Citizens Redistricting Commission (CRC)

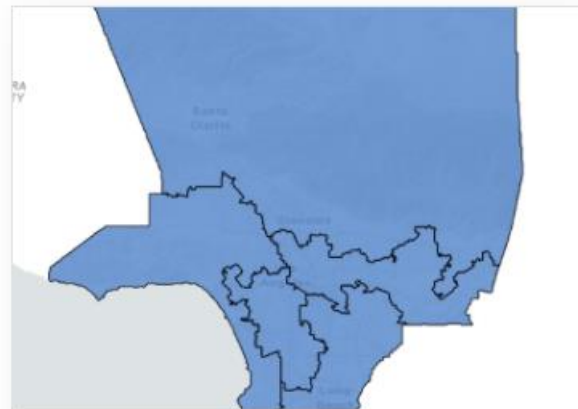
Modifications to Map Options B-1 and F, Prepared by Two Ad Hoc Working Groups for Further Public Input and Discussion



OP 064 - Modified Option B-1 (Ad Hoc Group)

For details on changes and reasons:  
<https://redistricting.lacounty.gov/wp-content/uploads/2021/11/OP064.pdf>

Explore



OP 065 - Modified Option F (Ad Hoc Working Group)

For details on changes and reasons:  
<https://redistricting.lacounty.gov/wp-content/uploads/2021/11/OP065.pdf>

Explore



OP 066 Modified Option F (Ad Hoc Working Group)

For details on changes and reasons:  
<https://redistricting.lacounty.gov/wp-content/uploads/2021/11/OP066.pdf>

Explore







## **5. Action/Discussion Items**

*5b. Discussion and possible formation of an Ad Hoc Working Group to review the draft year-end Technical Report (a work in progress) —  
Co-Chair Carolyn Williams*





# 6. Executive Director Report





# Upcoming Public Hearings

1. Wed., Dec. 1 at 6:30p – Public Hearing No. 3/ Special Meeting
2. Tues., Dec. 7 at 6:30p – Public Hearing No. 4 (Day 30)

**We want to hear from you!** Sign up by 8:00 pm to make oral public comments

# Adjournment

Co-Chair Daniel Mayeda

To learn about the LA County CRC, sign up at:  
<https://redistricting.lacounty.gov/>

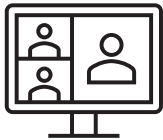




Sign up and stay informed: <https://redistricting.lacounty.gov>



**Meetings will be virtual until further notice.** If we offer hybrid formats in the future, attendance in person in keeping with COVID-19 health safety protocols – **masks required**



Attend and participate virtually in CRC meetings and public hearings:  
<https://us02web.zoom.us/j/82726060927>



Listen only to CRC meetings and public hearings by calling:  
(669) 900-9128, enter: 827 2606 0927#



View CRC meetings and public hearings on YouTube:  
<https://www.youtube.com/LACountyRedistricting/>



Submit written comments via:  
<https://publiccomment.redistricting.lacounty.gov/>  
By mail: Los Angeles County CRC, P.O. Box 56447, Sherman Oaks, CA 91413



## LA County CRC Resource Support

### Staff

Gayla Kraetsch Hartsough, Ph.D.  
LA County CRC Executive Director  
President, KH Consulting Group  
Associate Adjunct Faculty, University of Southern California  
[ghartsough@crc.lacounty.gov](mailto:ghartsough@crc.lacounty.gov)

Thai V. Le, Ph.D.  
LA County CRC Clerk, GIS, Public Policy, and Technical Support  
Consultant, KH Consulting Group  
University of Southern California  
[tle@crc.lacounty.gov](mailto:tle@crc.lacounty.gov)

### Subject Matter Experts

Carlos De Alba, Marketing, Media, and Outreach Consultant

Priti Mathur, ARCBridge  
Demographic Analysis and ESRI Mapping Software

Bruce Adelson, Esq., Federal Compliance Consulting LLC  
Professor Jonathan N. Katz, Ph.D., Caltech  
Racially Polarized Voting Analysis

### Independent Legal Counsel

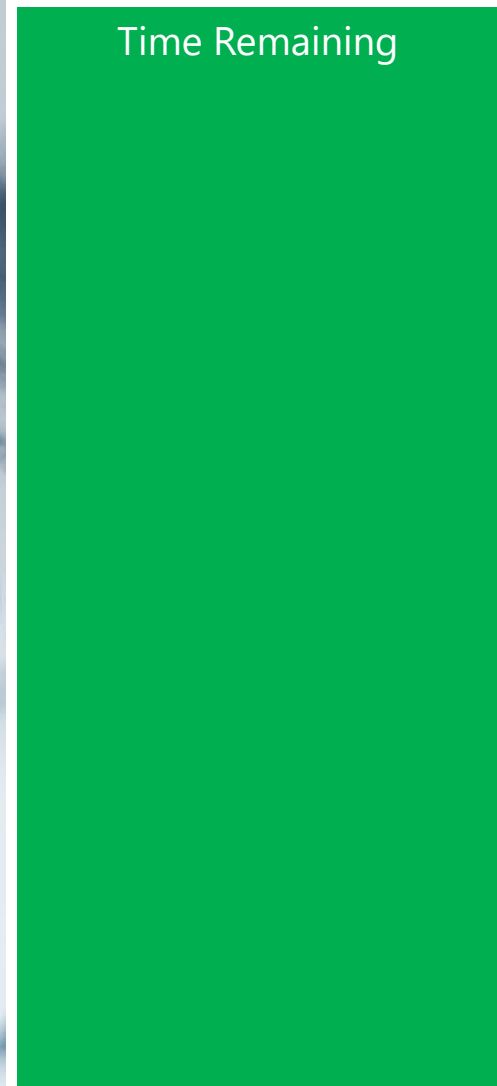
Holly O. Whatley, Esq., Shareholder  
Aleks R. Giragosian, Esq., Senior Counsel  
Pamela Graham, Esq., Senior Counsel

Colantuono, Highsmith & Whatley, PC 790 E.  
Colorado Blvd., Suite 850  
Pasadena, CA 91101-2109  
(213) 542-5700 tel  
(213) 542-5710 fax  
[hwhatley@chwlaw.us](mailto:hwhatley@chwlaw.us)



**Public Comment: 1 Minute**

Time Remaining





# Public Comment: 2 Minutes

Time Remaining







# LOS ANGELES COUNTY REDISTRICTING 2021

## Public Comment: 3 Minutes

Time Remaining



# Times Up! Wrap Up



# Los Angeles county Citizens Redistricting Commission (CRC)

**\* RECESS \***

**LIVE STREAM WILL RESUME SHORTLY**

---



LOS ANGELES COUNTY  
**REDISTRICTING**  
2021

