

Citizens Redistricting Commission (CRC)

**Comisión de Redelimitación de Distritos (CRC)
de ciudadanos del condado de los Ángeles**

LIVE STREAM WILL BEGIN SHORTLY

<https://www.youtube.com/LACountyRedistricting/>



LOS ANGELES COUNTY
REDISTRICTING
2021





LOS ANGELES COUNTY
REDISTRICTING 2021

Los Angeles County Citizens Redistricting Commission (CRC)

Comisión de Redelimitación de Distritos (CRC) de ciudadanos del condado de los Ángeles

November 15, 2021

El 15 de noviembre de 2021





1. Call to Order

ATTENTION ALL PARTICIPANTS

You must select your preferred language!

1. Click on “**Interpretation**” at the bottom of your screen
 2. Select English or Spanish
- You then can choose to mute the original audio for a clearer interpretation.

ATENCIÓN TODOS LOS PARTICIPANTES

Debe elegir el idioma que prefiere!

1. Haga clic en la “**Interpretación**” abajo en su pantalla a mano derecha
 2. Elija Inglés o Español
- Luego, puede optar por "silenciar el audio original" para escuchar una interpretación más clara.



IF YOU DO NOT CHOOSE A LANGUAGE, YOU WILL NOT HEAR THE INTERPRETATION.
SÍ USTED NO SELECCIONA UN IDIOMA, NO PODRÁ ESCUCHAR LA INTERPRETACIÓN.

Notice



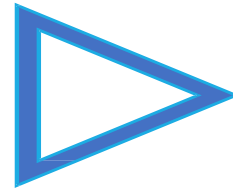
LOS ANGELES COUNTY
REDISTRICTING 2021

This meeting is streaming live at:

<https://www.youtube.com/LACountyRedistricting/>

This meeting is being recorded and will be posted on LA County CRC website:

<https://redistricting.lacounty.gov>



**Deseamos recordarle al público que esta audiencia pública
se está grabando y transmitiendo en directo en**

<https://www.youtube.com/LACountyRedistricting>

**El enlace de la grabación también se publicará y podrán acceder a ella a través del sitio
web del Condado de Los Ángeles**

<https://redistricting.lacounty.gov>





Notice

**During the CRC meeting, if you need technical assistance,
use the Q&A button at the bottom of your Zoom Webinar screen.
Thai Le, LA County CRC Clerk, can assist you.**

**Si en algún momento los miembros del público tienen alguna dificultad técnica, por
favor envíenme un mensaje a mí, Thai Le,
y haremos todo lo posible por solucionar el problema.**



2. Roll Call

Ahora pasaré lista. Les recuerdo que los nombres de los comisionados se llamarán en orden alfabético rotativo según su apellido. Comisionados, estén preparados para desenmudecer su micrófono y responder cuando llame su nombre.

1. Commissioner Jean Franklin
2. Commissioner David Holtzman
3. Commissioner Mary Kenney
4. Co-Chair Daniel Mayeda
5. Commissioner Mark Mendoza
6. Commissioner Apolonio Morales
7. Commissioner Nelson Obregon
8. Commissioner Priscilla Orpinela-Segura
9. Commissioner Hailes Soto
10. Commissioner Saira Soto
11. Commissioner Brian Stecher
12. Commissioner John Vento
13. Co-Chair Carolyn Williams
14. Commissioner Doreena Wong

1. Comisionada Jean Franklin
2. Comisionado David Holtzman
3. Comisionada Mary Kenney
4. Codirector Daniel Mayeda
5. Comisionado Mark Mendoza
6. Comisionado Apolonio Morales
7. Comisionado Nelson Obregon
8. Comisionada Priscilla Orpinela-Segura
9. Comisionado Hailes Soto
10. Comisionada Saira Soto
11. Comisionado Brian Stecher
12. Comisionado John Vento
13. Codirectora Carolyn Williams
14. Comisionada Doreena Wong





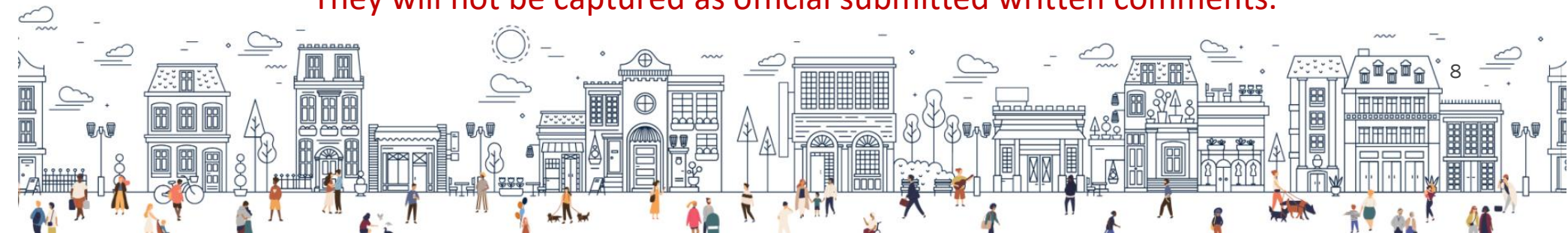
Public Comments: How to Make an Oral Public Comment

Type your name, affiliation/organization, and Agenda Item # into QA if you want to make an oral Public Comment.

If on a phone line, press *9 to raise your hand. Once called upon, press *6 to unmute and speak.

- Each Person Gets 1 Minute unless the Co-Chairs determine otherwise.
- Each person only gets 1 opportunity to speak.
- When you speak, share your name and affiliation at the beginning.
- Cada persona tendrá la oportunidad de hablar por 1 minuto.
- Cada persona solo tiene 1 oportunidad para hablar.
- Cuando comience a hacer su comentario, por favor comparta su nombre y cualquier afiliación que tenga.

**Do not type written comments into QA.
They will not be captured as official submitted written comments.**





How to Submit Written Public Comments

The public can submit written comments
on Agenda items at:

<https://publiccomment.redistricting.lacounty.gov/>

Si no quiere hablar pero quiere hacer un comentario
público por escrito, use este enlace:

<https://publiccomment.redistricting.lacounty.gov/>

LOS ANGELES COUNTY REDISTRICTING 2021 PUBLIC COMMENT

Meeting Date: 11/10/2021

First Name* MI Last Name*

Email Phone

Address City State Zip Code

Name of Organization Represented

Attach Word, Excel, or PDF supporting document(s). (5 attachments limit)

Agenda Items

Agenda	Title
<input type="checkbox"/>	4. General Public Comment
<input type="checkbox"/>	6.a. Racially Polarized Voting Analysis Report on Current 4 Map Options
<input type="checkbox"/>	6.b. Review and Discussion of public input on map options and submitted maps, including Commissioners' observations and suggested modifications, and possible direction to ARCBridge to prepare modified or new maps for future consideration
<input type="checkbox"/>	OPTION A Draft Map Chosen By Commissioners for Further Public Input and Discussion - Option A



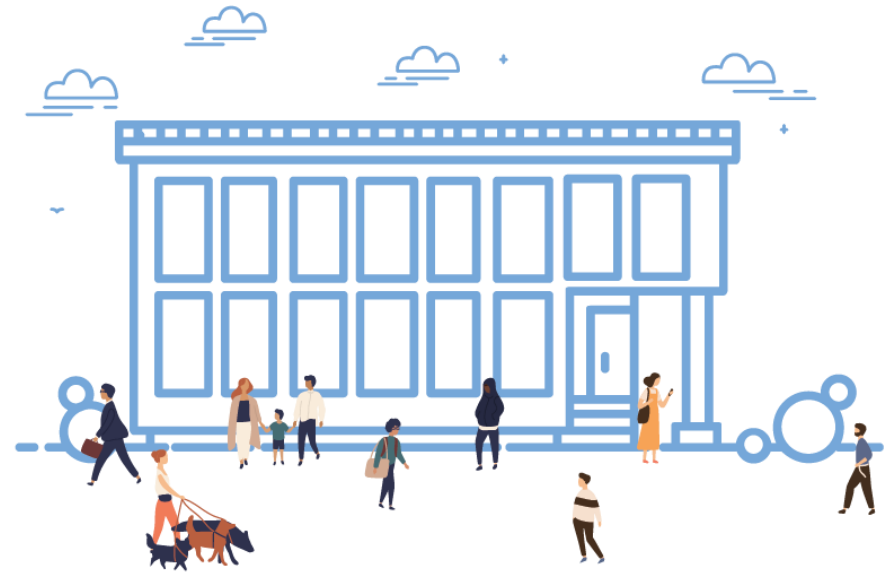
3. Approval of Agenda

Co-Chair Carolyn Williams



5. Consent Items – Approval of Minutes – Co-Chair Daniel Mayeda

- a. Review and take appropriate action on the Draft Minutes: November 10, 2021





6. Action/Discussion Items

6b. Review and Discussion of public input on map options and submitted maps, including Commissioners' observations and suggested modifications, and possible direction to ARCBridge to prepare modified or new maps for future consideration — Co-Chairs Dan Mayeda and Carolyn Williams

Updates

Received People's Bloc responses to the Commissioners' questions, including the COI input they had collected – posted with the November 10, 2021, meeting

Have not received MALDEF responses to the Commissioners' questions yet

Up to Map 049 submitted now



Los Angeles County Citizens Redistricting Commission (CRC)

Map Options A-1, B-1, C-1, D-1 Chosen by Commissioners for Further Public Input and Discussion at Upcoming Public Hearings



Option A-1

Option A modified: Catalina Island moved to SD 4. To view ESRI Layer View, click:...

Explore



Option A-1 (ESRI Layer View)

Option A modified: Catalina Island moved to SD 4. The public submitted an earlier...

Explore



Option B-1

Option B modified: Keep Burbank together; put Santa Monica in its entirety in SD4. T...

Explore



Option B-1 (ESRI Layer View)

Option B modified: Keep Burbank together; put Santa Monica in its entirety in SD4.

Explore



Option C-1

Option C modified: Put POSO with Sherman Oaks; keep Van Nuys together in SD4. To view...

Explore



Option C-1 (ESRI Layer View)

Option C modified: Put POSO with Sherman Oaks; keep Van Nuys together in SD4. The...

Explore



Option D-1

Option D modified: Catalina Island with SD4; include Bell Gardens and Downey in SD4...

Explore

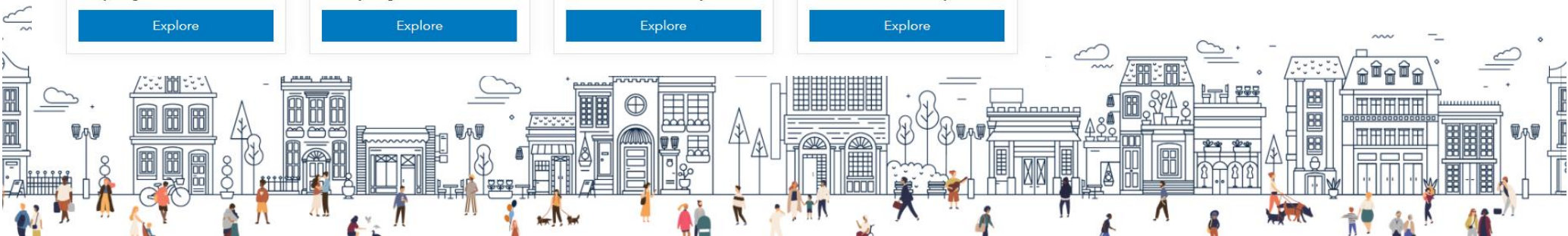


Option D-1 (ESRI Layer View)

Option D modified: Catalina Island with SD4; include Bell Gardens and Downey in SD4.

Explore

Commissioners' Requested Modifications	
A	Catalina Island with SD4
B	Include Bell Gardens with SE LA
B	Keep Burbank Together
B	Put Santa Monica in its entirety in SD4
C	Keep Duarte together
C	Put POSO with Sherman Oaks; now all with Van Nuys
D	Catalina Island with SD4
D	Include Bell, Bell Gardens and Downey



Mapping Terminology

Census Data Levels	Actual	Rounded
Tracts	2,498	2,500
Block Groups	6, 591	6,600
Blocks	91,626	92,000
RDU at Tract level	2,957	3,000
Countywide Statistical Areas (CSAs) that include the 88 cities and 122 unincorporated areas. City of Los Angeles is further divided into 139 CSAs.	348	350





Suggested Map Modifications

See Worksheet





Modifications suggested to two or more map options

- Keep cities whole
 - Keep Santa Monica together in SD 4 – Done
 - Combine cities that share same Sheriff services (e.g., Paramount and other contiguous contract cities); combine City of Paramount with City of Lakewood
- Do not divide Stonehurst Ave. residential street; combine western boundary for rural area, including landfills along Glenoaks and Sheldon and the Big Tujunga Wash and Hansen Dam Recreation Area with SD 5.
- Keep Sherman Oaks, including POSO (Part of Sherman Oaks), together in SD 3; POSO is bounded by Oxnard Street (north), Hazeltine Avenue (east), Burbank Boulevard (south), and the 405 Freeway (west). – Done
- Move boundary south to National Boulevard for SD 3 to avoid splitting the Westside NC between two SDs; group with communities to the north in Westwood and the general UCLA community
- Have Catalina connect with either San Pedro and Long Beach – Done





ARCBridge Modifications to Map Options, Based on Commissioners' Directions

Maps	Commissioners Issues for Further Discussions	Notes
A-1	Keep Long Beach Together	
A-2	Lynwood should be included with NE LA and SE LA	In District 1
A-1 & C-1	City of Torrance part of South Bay Area	Part of Torrance (violates contiguity)
	Pomona	Waiting for discussion
	Input regarding how to handle input from elected officials, given as part of public comments	





Notes Provided by Henry Fung for OP 036: Modified Option A

SD 1:

- SD 1 keeps Azusa whole - there is no reason to split up Rosedale from the rest of Azusa
- Same with San Gabriel
- SD 1 connects middle income Asian community in SGV - high Asian population areas like Monterey Park, San Gabriel, Rosemead, Alhambra with Rowland Heights and Hacienda Heights (more affluent Asians in SD 5 in cities like San Marino, Arcadia, Temple City, Walnut share more common interests with Whites)
- Keeps San Gabriel Valley into only two pieces - Montebello is part of SGVCOG and is moved to SD 1, Industry and Diamond Bar moved to SD 1
- Unites Heights communities along Puente Hills
- Moves Pomona to SD 1 as requested by Mayor of Pomona
- Remains majority Latino (51.59% Latino CVAP compared to 54.52% benchmark map)
- Asian representation improves - 25.52% Asian CVAP compared to 22.97% benchmark map

SD 2:

- New SD 2 includes renter dominant communities on the Westside - Palms, Sawtelle Japantown, renter heavy portions of Brentwood, Westwood Bl corridor, UCLA campus
- Does not split Park La Brea
- Includes VA hospital property - many homeless veterans have origins in SD 2
- Connects UCLA with many of its students who live in Palms
- Keeps the central part of Westchester with SD 2
- Unites Japanese American communities in Gardena, Sawtelle Japantown (Little Osaka) and Little Tokyo
- SD 2 remains Black influence - 29.79% Black CVAP compared to 30.85% benchmark map

SD 3:

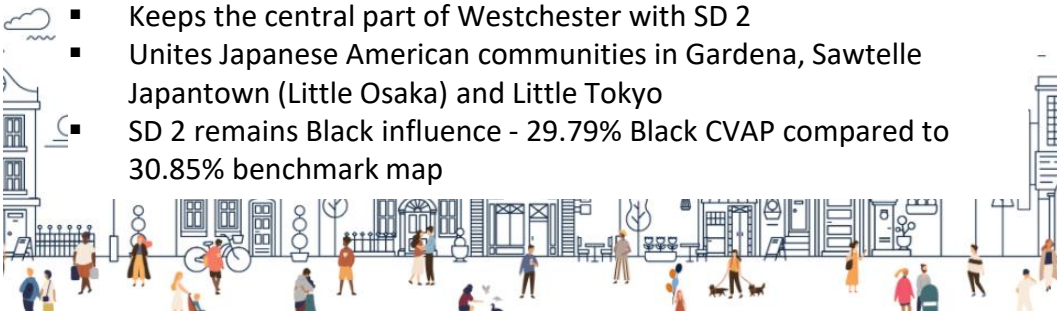
- Cheviot Hills is moved to SD 3 due to high homeowner and affluent population to join other high income communities in the Hollywood Hills and Beverly Hills
- Keeps Lakeview Terrace in SD 3 while moving Kagel Canyon to SD 5
- Cuts at Glenoaks Bl to extent possible to respect Shadow Hills community boundary
- SD 3/SD 5 boundary in rest of San Fernando Valley remains the same.
- Remains predominantly White - 54.14% White CVAP compared to 54.73% benchmark.
- Keeps El Segundo in SD 3
- (Note due to technical limitations LAX is in SD 3 when it should be in SD 2)

SD 4:

- SD 4 covers all Gateway Cities and SELA
- Keeps Long Beach whole
- Keeps Whittier whole
- Does not include finger to Torrance
- Excludes San Gabriel Valley
- Watts is moved to SD 4 for population balance and to connect with Florence Firestone - Watts is 62% Latino CVAP, 34% Black so putting it with Latino district helps improve Latino numbers
- More Latino - 55.77% Latino compared to 50.15% benchmark map.

SD 5:

- SD 5 boundary in NE SFV changes to put Shadow Hills and Kagel Canyon in SD 5 and group more Latino communities in SD 3 with other cities in the Valley
- SD 3/5 boundary in rest of SFV remains the same
- Duarte is moved to SD 5 as a whole to join its other Foothill cities. Duarte is 44% Latino CVAP and so including it in SD 1 would slightly reduce the Latino percentage in SD 1. Compare with Azusa which is 57% Latino CVAP and should be included in a Latino district.



Quick pin map of People's Bloc organizations: <https://goo.gl/maps/JKmMmSRG2W2GtUb67>

People's Bloc Organizations
By Thai Van Le · 26 places

FOLLOW

No addresses available for: Black Census and Redistricting Hub, Nuestro Voto Community Action League

Asian Americans Advancing Justice - South Asian Network
3.4 ★★★★★ (9)
Medical clinic · 18173 Pioneer Blvd #1
Open until 5:00 PM

SOCIAL JUSTICE LEARNING INSTITUTE
5.0 ★★★★★ (1)
Learning center · 600 Centinela Ave
Open until 5:00 PM

SELA Collaborative
Non-profit organization · 1541 Wilshire Blvd #430
Open until 5:00 PM

Strategic Concepts in Organizing & Policy Education (SCOPE)
4.5 ★★★★★ (16)
Non-profit organization · 1715 W Florence Ave
Open until 6:00 PM

Power California, SoCal
1.0 ★★★★★ (1)
Non-profit organization · 530 S Boyle Ave
Open until 5:00 PM

3355 E Gage Ave
Huntington Park, CA 90255

Notes:

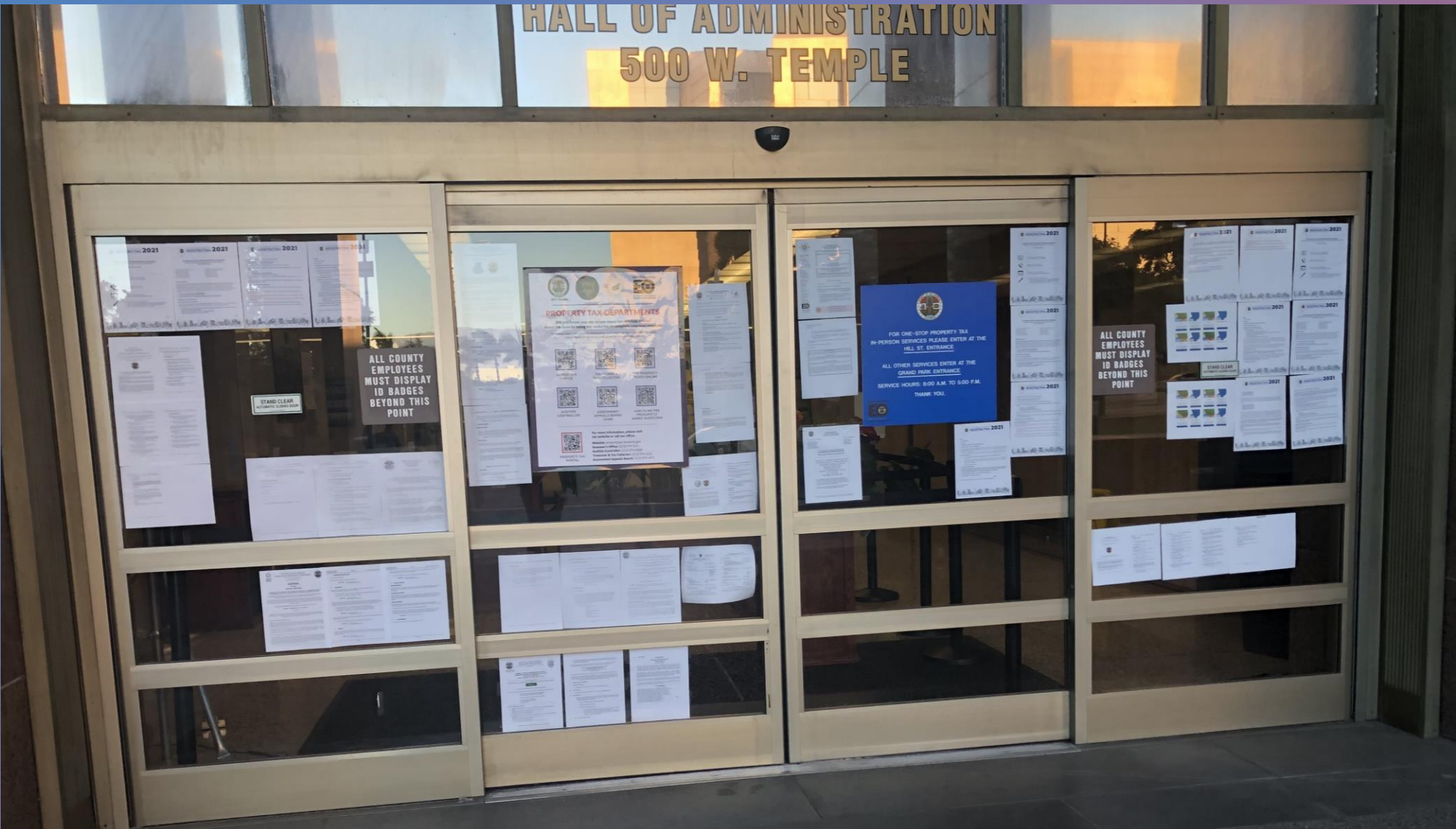
- No physical addresses for Black Census and Redistricting Hub, Nuestro Voto, and the Community Action League.
- Community Action League may serve the greater Antelope Valley.



7. Executive Director Report



HALL OF ADMINISTRATION
500 W. TEMPLE



LA County CRC followed the County's protocols for posting agenda during the COVID-19 pandemic.

The Agenda and map options were posted at the Hall of Administration. Hard copies were available inside the building.



Upcoming Public Hearings and Meetings

1. Wed., Nov. 17 at 6:30p – Public Hearing No. 2/
Special Meeting
2. Wed., Dec. 1 at 6:30p – Public Hearing No. 3/ Special
Meeting
3. Tues., Dec. 7 at 6:30p – Public Hearing No. 4 (Day
30)

We want to hear from you! Sign up by 8:00 pm to make oral public comments

Adjournment

Co-Chair Daniel Mayeda

To learn about the LA County CRC, sign up at:
<https://redistricting.lacounty.gov/>

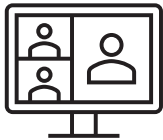




Sign up and stay informed: <https://redistricting.lacounty.gov>



November meetings will be virtual until further notice. If we offer hybrid formats in the future, attendance in person in keeping with COVID-19 health safety protocols – **masks required**



Attend and participate virtually in CRC meetings and public hearings:
<https://us02web.zoom.us/j/82726060927>



Listen only to CRC meetings and public hearings by calling:
(669) 900-9128, enter: 827 2606 0927#



View CRC meetings and public hearings on YouTube:
<https://www.youtube.com/LACountyRedistricting/>



Submit written comments via:
<https://publiccomment.redistricting.lacounty.gov/>
By mail: Los Angeles County CRC, P.O. Box 56447, Sherman Oaks, CA 91413



LA County CRC Resource Support

Staff

Gayla Kraetsch Hartsough, Ph.D.
LA County CRC Executive Director
President, KH Consulting Group
Associate Adjunct Faculty, University of Southern California
ghartsough@crc.lacounty.gov

Thai V. Le, Ph.D.
LA County CRC Clerk, GIS, Public Policy, and Technical Support
Consultant, KH Consulting Group
University of Southern California
tle@crc.lacounty.gov

Subject Matter Experts

Carlos De Alba, Marketing, Media, and Outreach Consultant

Priti Mathur, ARCBridge
Demographic Analysis and ESRI Mapping Software

Bruce Adelson, Esq., Federal Compliance Consulting LLC
Professor Jonathan N. Katz, Ph.D., Caltech
Racially Polarized Voting Analysis

Independent Legal Counsel

Holly O. Whatley, Esq., Shareholder
Aleks R. Giragosian, Esq., Senior Counsel
Pamela Graham, Esq., Senior Counsel

Colantuono, Highsmith & Whatley, PC 790 E.
Colorado Blvd., Suite 850
Pasadena, CA 91101-2109
(213) 542-5700 tel
(213) 542-5710 fax
hwhatley@chwlaw.us



Public Comment: 1 Minute

Time Remaining





Public Comment: 2 Minutes

Time Remaining





LOS ANGELES COUNTY REDISTRICTING 2021

Public Comment: 3 Minutes

Time Remaining



Times Up! Wrap Up



Citizens Redistricting Commission (CRC) Meeting

*** RECESS ***

LIVE STREAM WILL RESUME SHORTLY



LOS ANGELES COUNTY
REDISTRICTING
2021

