

Citizens Redistricting Commission (CRC)

**Comisión de Redelimitación de Distritos (CRC)
de ciudadanos del condado de los Ángeles**

LIVE STREAM WILL BEGIN SHORTLY

<https://www.youtube.com/LACountyRedistricting/>



LOS ANGELES COUNTY
REDISTRICTING
2021





LOS ANGELES COUNTY
REDISTRICTING 2021

Los Angeles County
Citizens Redistricting Commission (CRC)
Comisión de Redelimitación de Distritos (CRC)
de ciudadanos del condado de los Ángeles

November 17, 2021

El 10 de noviembre de 2021





1. Call to Order

ATTENTION ALL PARTICIPANTS

You must select your preferred language!

1. Click on “**Interpretation**” at the bottom of your screen
 2. Select English or Spanish
- You then can choose to mute the original audio for a clearer interpretation.

ATENCIÓN TODOS LOS PARTICIPANTES

Debe elegir el idioma que prefiere!

1. Haga clic en la “**Interpretación**” abajo en su pantalla a mano derecha
 2. Elija Inglés o Español
- Luego, puede optar por "silenciar el audio original" para escuchar una interpretación más clara.



IF YOU DO NOT CHOOSE A LANGUAGE, YOU WILL NOT HEAR THE INTERPRETATION.
SÍ USTED NO SELECCIONA UN IDIOMA, NO PODRÁ ESCUCHAR LA INTERPRETACIÓN.

Notice



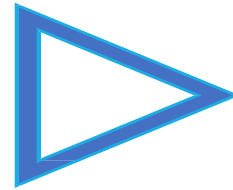
LOS ANGELES COUNTY
REDISTRICTING 2021

This meeting is streaming live at:

<https://www.youtube.com/LACountyRedistricting/>

This meeting is being recorded and will be posted on LA County CRC website:

<https://redistricting.lacounty.gov>



**Deseamos recordarle al público que esta audiencia pública
se está grabando y transmitiendo en directo en**

<https://www.youtube.com/LACountyRedistricting>

**El enlace de la grabación también se publicará y podrán acceder a ella a través del sitio
web del Condado de Los Ángeles**

<https://redistricting.lacounty.gov>





Notice

**During the CRC meeting, if you need technical assistance,
use the Q&A button at the bottom of your Zoom Webinar screen.
Thai Le, LA County CRC Clerk, can assist you.**

**Si en algún momento los miembros del público tienen alguna dificultad técnica, por
favor envíenme un mensaje a mí, Thai Le,
y haremos todo lo posible por solucionar el problema.**



2. Roll Call

Ahora pasaré lista. Les recuerdo que los nombres de los comisionados se llamarán en orden alfabético rotativo según su apellido. Comisionados, estén preparados para desenmudecer su micrófono y responder cuando llame su nombre.

1. Commissioner Jean Franklin
2. Commissioner David Holtzman
3. Commissioner Mary Kenney
4. Co-Chair Daniel Mayeda
5. Commissioner Mark Mendoza
6. Commissioner Apolonio Morales
7. Commissioner Nelson Obregon
8. Commissioner Priscilla Orpinela-Segura
9. Commissioner Hailes Soto
10. Commissioner Saira Soto
11. Commissioner Brian Stecher
12. Commissioner John Vento
13. Co-Chair Carolyn Williams
14. Commissioner Doreena Wong

1. Comisionada Jean Franklin
2. Comisionado David Holtzman
3. Comisionada Mary Kenney
4. Codirector Daniel Mayeda
5. Comisionado Mark Mendoza
6. Comisionado Apolonio Morales
7. Comisionado Nelson Obregon
8. Comisionada Priscilla Orpinela-Segura
9. Comisionado Hailes Soto
10. Comisionada Saira Soto
11. Comisionado Brian Stecher
12. Comisionado John Vento
13. Codirectora Carolyn Williams
14. Comisionada Doreena Wong



3. Approval of Agenda

Co-Chair Carolyn Williams





4. General Public Comments: How to Make an Oral Public Comment

Type your name, affiliation/organization, and Agenda Item # into QA if you want to make an oral Public Comment.

If on a phone line, press *9 to raise your hand. Once called upon, press *6 to unmute and speak.

- Each Person Gets 1 Minute unless the Co-Chairs determine otherwise.
- Each person only gets 1 opportunity to speak.
- When you speak, share your name and affiliation at the beginning.
- Cada persona tendrá la oportunidad de hablar por 1 minuto.
- Cada persona solo tiene 1 oportunidad para hablar.
- Cuando comience a hacer su comentario, por favor comparta su nombre y cualquier afiliación que tenga.

**Do not type written comments into QA.
They will not be captured as official submitted written comments.**





How to Submit Written Public Comments

The public can submit written comments
on Agenda items at:

<https://publiccomment.redistricting.lacounty.gov/>

Si no quiere hablar pero quiere hacer un comentario
público por escrito, use este enlace:

<https://publiccomment.redistricting.lacounty.gov/>

LOS ANGELES COUNTY REDISTRICTING 2021 PUBLIC COMMENT

Meeting Date: 11/10/2021

First Name* MI Last Name*

Email Phone

Address City State Zip Code

Name of Organization Represented

Attach Word, Excel, or PDF supporting document(s). (5 attachments limit)

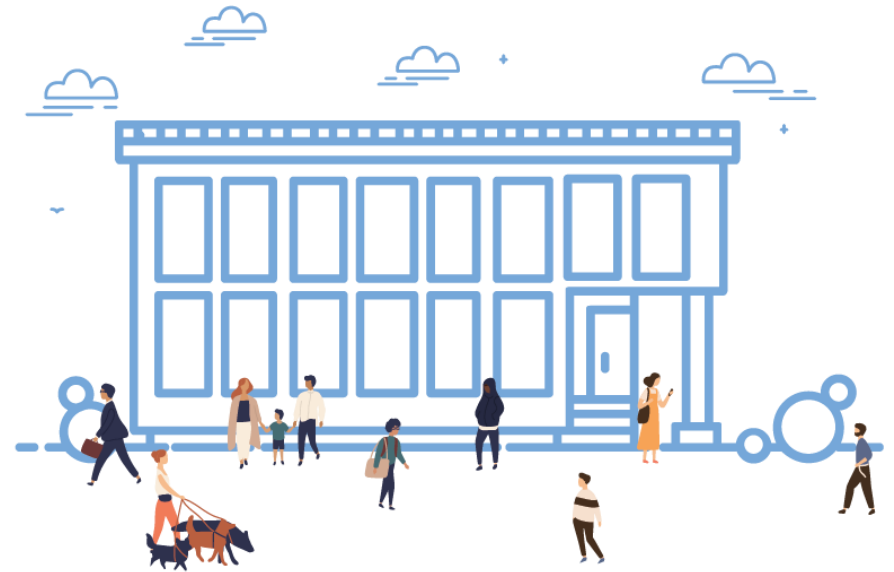
Agenda Items

Agenda	Title
<input type="checkbox"/>	4. General Public Comment
<input type="checkbox"/>	6.a. Racially Polarized Voting Analysis Report on Current 4 Map Options
<input type="checkbox"/>	6.b. Review and Discussion of public input on map options and submitted maps, including Commissioners' observations and suggested modifications, and possible direction to ARCBridge to prepare modified or new maps for future consideration
<input type="checkbox"/>	OPTION A Draft Map Chosen By Commissioners for Further Public Input and Discussion - Option A



5. Consent Items – Approval of Minutes – Co-Chair Daniel Mayeda

- a. Review and take appropriate action on the Draft Minutes: November 3 and November 7, 2021





6. Action/Discussion Items

6a. Racially Polarized Voting Analysis Report on Current 4 Map Options— Co-Chair Carolyn Williams

Presentation by

- i. Bruce Adelson, Esq., Federal Compliance Consulting LLC; Instructor of Family Medicine, Georgetown University School of Medicine; Adjunct Professor of Law, University of Pittsburgh School of Law
- ii. Dr. Jonathan N. Katz, Kay Sugahara Professor of Social Sciences and Statistics, Division of the Humanities and Social Sciences, California Institute of Technology



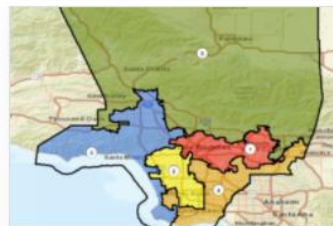
6. Action/Discussion Items

6b. Review and Discussion of public input on map options and submitted maps, including Commissioners' observations and suggested modifications, and possible direction to ARCBridge to prepare modified or new maps for future consideration — Co-Chairs Dan Mayeda and Carolyn Williams



Los Angeles County Citizens Redistricting Commission (CRC)

Map Options Chosen by Commissioners for Further Public Input and Discussion at Upcoming Public Hearings



Option A

ARCBridge analysis of Option A. To view this in the ESRI layer view, click: <https://redistrictin...>

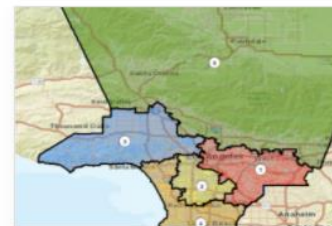
Explore



Option A (ESRI Layer View)

The public submitted this map using different software and divided some cities,...

Explore



Option B

ARCBridge analysis of Option B. To view this in the ESRI layer view, click: <https://redistrictin...>

Explore



Option B (ESRI Layer View)



Option C

ARCBridge analysis of Option C. To view this in the ESRI layer view, click: <https://redistrictin...>

Explore



Option C (ESRI Layer View)

The public submitted this map using different software and divided some cities,...

Explore



Option D

ARCBridge analysis of Option D. To view this in the ESRI layer view, click: <https://redistrictin...>

Explore



Option D (ESRI Layer View)





Format for Discussions

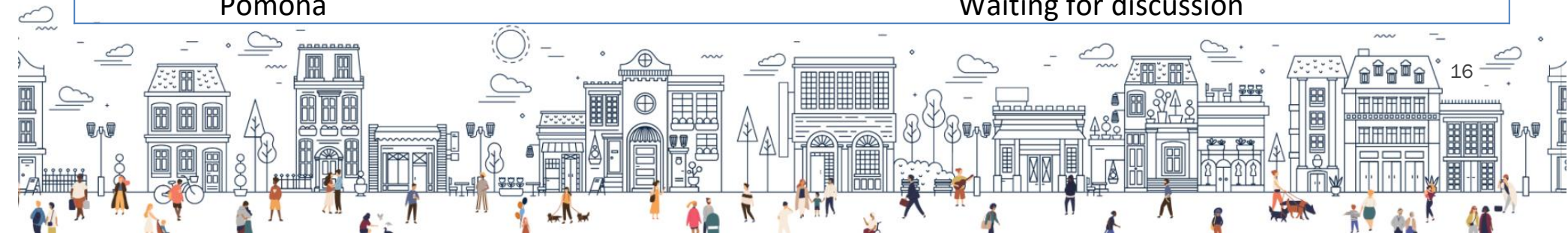
1. ARCBridge presents:
 - a) Splits of the 4 map options
 - b) Scorecard on the 4 new maps submitted, including proposed modifications to existing maps
2. Worksheet on written/oral suggested modifications to Maps A, B, C, D
3. Commissioner discussion of desired modifications to Maps A, B, C, D and directions to ARCBridge to prepare modifications by Wednesday at noon for posting





ARCBridge Modifications to Map Options, Based on Commissioners' Directions

Map Options	Commissioners' Requested Modifications	ARCBridge's Changes
A	Catalina Island with SD4	Done
B	Include Bell Gardens with SE LA	Done
B	Keep Burbank Together	Done
B	Put Santa Monica in its entirety in SD4	Done
C	Keep Duarte together	Done
C	Put POSO with Sherman Oaks	Put Van Nuys all together
D	Catalina Island with SD4	Done
D	Include Bell, Bell Gardens and Downey	Done (Bell was added per Cm Hailes Soto's recommendation)
Issues for further Discussions		
A	Keep Long Beach Together	
A	Lynwood should be included with NE LA and SE LA	In District 4
A & C	City of Torrance part of South Bay Area	Part of Torrance (Violates contiguity)
	Pomona	Waiting for discussion



Quick pin map of People's Bloc organizations: <https://goo.gl/maps/JKmMmSRG2W2GtUb67>

People's Bloc Organizations
By Thai Van Le · 26 places

FOLLOW

No addresses available for: Black Census and Redistricting Hub, Nuestro Voto Community Action League

Asian Americans Advancing Justice - South Asian Network
3.4 ★★★★★ (9)
Medical clinic · 18173 Pioneer Blvd #1
Open until 5:00 PM

SOCIAL JUSTICE LEARNING INSTITUTE
5.0 ★★★★★ (1)
Learning center · 600 Centinela Ave
Open until 5:00 PM

SELA Collaborative
Non-profit organization · 1541 Wilshire Blvd #430
Open until 5:00 PM

Strategic Concepts in Organizing & Policy Education (SCOPE)
4.5 ★★★★★ (16)
Non-profit organization · 1715 W Florence Ave
Open until 6:00 PM

Power California, SoCal
1.0 ★★★★★ (1)
Non-profit organization · 530 S Boyle Ave
Open until 5:00 PM

3355 E Gage Ave
Huntington Park, CA 90255

Notes:

- No physical addresses for Black Census and Redistricting Hub, Nuestro Voto, and the Community Action League.
- Community Action League may serve the greater Antelope Valley.



7. Executive Director Report





Upcoming Public Hearings and Meetings

1. Wed., Nov. 17 at 6:30p – Public Hearing No. 2/
Special Meeting
2. Wed., Dec. 1 at 6:30p – Public Hearing No. 3/ Special
Meeting
3. Tues., Dec. 7 at 6:30p – Public Hearing No. 4 (Day
30)

We want to hear from you! Sign up by 8:00 pm to make oral public comments

Adjournment

Co-Chair Daniel Mayeda

To learn about the LA County CRC, sign up at:
<https://redistricting.lacounty.gov/>

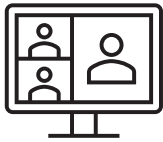




Sign up and stay informed: <https://redistricting.lacounty.gov>



November meetings will be virtual until further notice. If we offer hybrid formats in the future, attendance in person in keeping with COVID-19 health safety protocols – **masks required**



Attend and participate virtually in CRC meetings and public hearings:
<https://us02web.zoom.us/j/82726060927>



Listen only to CRC meetings and public hearings by calling:
(669) 900-9128, enter: 827 2606 0927#



View CRC meetings and public hearings on YouTube:
<https://www.youtube.com/LACountyRedistricting/>



Submit written comments via:
<https://publiccomment.redistricting.lacounty.gov/>
By mail: Los Angeles County CRC, P.O. Box 56447, Sherman Oaks, CA 91413



LA County CRC Resource Support

Staff

Gayla Kraetsch Hartsough, Ph.D.
LA County CRC Executive Director
President, KH Consulting Group
Associate Adjunct Faculty, University of Southern California
ghartsough@crc.lacounty.gov

Thai V. Le, Ph.D.
LA County CRC Clerk, GIS, Public Policy, and Technical Support
Consultant, KH Consulting Group
University of Southern California
tle@crc.lacounty.gov

Subject Matter Experts

Carlos De Alba, Marketing, Media, and Outreach Consultant

Priti Mathur, ARCBridge
Demographic Analysis and ESRI Mapping Software

Bruce Adelson, Esq., Federal Compliance Consulting LLC
Professor Jonathan N. Katz, Ph.D., Caltech
Racially Polarized Voting Analysis

Independent Legal Counsel

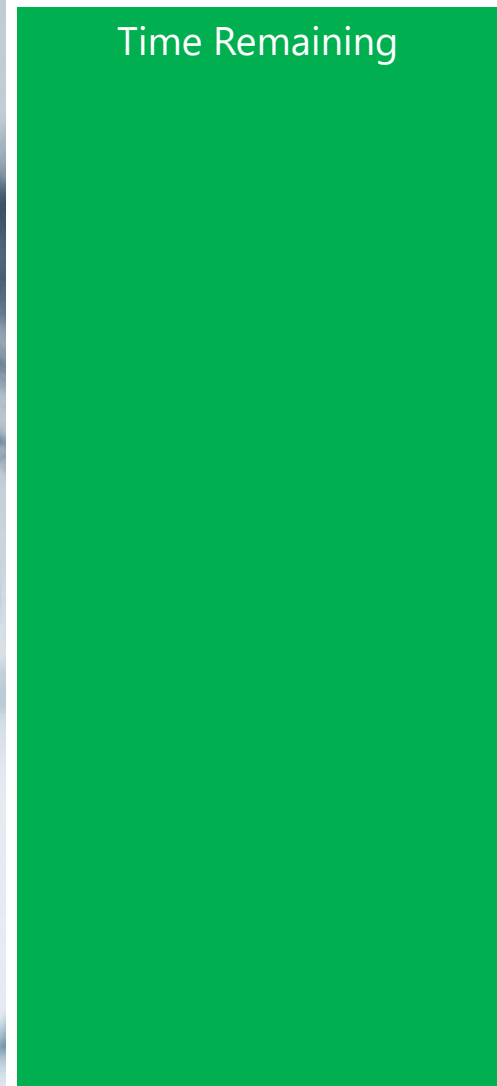
Holly O. Whatley, Esq., Shareholder
Aleks R. Giragosian, Esq., Senior Counsel
Pamela Graham, Esq., Senior Counsel

Colantuono, Highsmith & Whatley, PC 790 E.
Colorado Blvd., Suite 850
Pasadena, CA 91101-2109
(213) 542-5700 tel
(213) 542-5710 fax
hwhatley@chwlaw.us



Public Comment: 1 Minute

Time Remaining





Public Comment: 2 Minutes

Time Remaining





LOS ANGELES COUNTY REDISTRICTING 2021

Public Comment: 3 Minutes

Time Remaining



Times Up! Wrap Up



Citizens Redistricting Commission (CRC) Meeting

*** RECESS ***

LIVE STREAM WILL RESUME SHORTLY



LOS ANGELES COUNTY
REDISTRICTING
2021

