

# Citizens Redistricting Commission (CRC) Meeting

## LIVE STREAM WILL BEGIN SHORTLY

<https://www.youtube.com/LACountyRedistricting/>



LOS ANGELES COUNTY  
**REDISTRICTING**  
2021





LOS ANGELES COUNTY  
**REDISTRICTING 2021**

# Los Angeles County Citizens Redistricting Commission (CRC)

Special Meeting: November 3, 2021





# 1. Call to Order



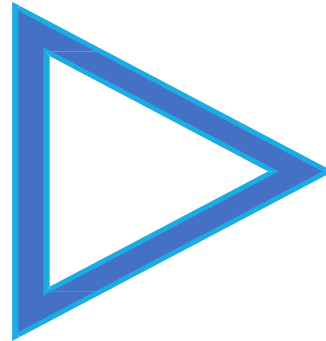
# Notice

This meeting is being recorded and will be posted on LA County CRC website:

<https://redistricting.lacounty.gov>

This meeting is streaming live at:

<https://www.youtube.com/LACountyRedistricting/>



**During the CRC meeting, if you need technical assistance,  
use the Q&A button at the bottom of your Zoom Webinar screen.**

**Thai Le, LA County CRC Clerk, can assist you.**





## 2. Roll Call

Commissioner Jean Franklin

Commissioner David Holtzman

Commissioner Mary Kenney

Co-Chair Daniel Mayeda

Commissioner Mark Mendoza

Commissioner Apolonio Morales

Commissioner Nelson Obregon

Commissioner Priscilla Orpinela-Segura

Commissioner Hailes Soto

Commissioner Saira Soto

Commissioner Brian Stecher

Commissioner John Vento

Co-Chair Carolyn Williams

Commissioner Doreena Wong



# 3. Approval of Agenda

## Co-Chair Carolyn Williams







**There will be no general public comments at this special meeting.**

The public can later make oral comments on other Agenda items.

The public can also submit written comments on Agenda items at:

<https://publiccomment.redistricting.lacounty.gov/>

**Note: We have started to receive written comments on the 4 map options and will post that input ahead of the first public hearing if received by Saturday, November 6, 2021, noon.**





# How to Make Public Comment on an Agenda Item

*Type your name, affiliation/organization, **and Agenda Item #** into QA if you want to make an oral Public Comment.*

*If on a phone line, press \*9 to raise your hand.  
Once called upon, press \*6 to unmute and speak.*

*Each Person Gets 1 Minute unless the Co-Chairs determine otherwise.  
**Each person only gets 1 opportunity to speak.***

When you speak, share your name and affiliation at the beginning.

You can also submit written comments on Agenda items at:

<https://publiccomment.redistricting.lacounty.gov/>

**Do not type written comments into QA.**

**They will not be captured as official submitted written comments.**







#### **4. Content Items – Approval of Minutes Co-Chair Dan Mayeda**

- a. Review and take appropriate action on the October 26, 27, 28, 2021, Draft Minutes



# 5a. Action/ Discussion Items

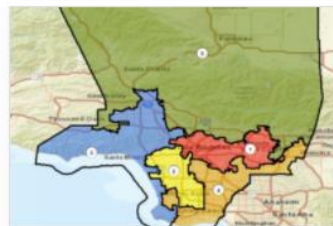
*Discussion of and Possible Approval of the Format and Process for Structuring Upcoming Public Hearings to Review and Receive Public Testimony Regarding the Four Adopted Map Options —Co-Chairs Dan Mayeda and Carolyn Williams*





# Los Angeles County Citizens Redistricting Commission (CRC)

## Map Options Chosen by Commissioners for Further Public Input and Discussion at Upcoming Public Hearings



Option A

ARCBridge analysis of Option A. To view this in the ESRI layer view, click: <https://redistrictin...>

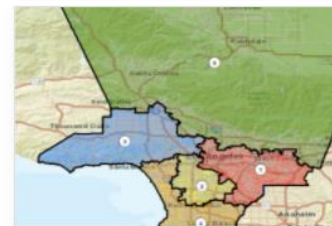
Explore



Option A (ESRI Layer View)

The public submitted this map using different software and divided some cities,...

Explore



Option B

ARCBridge analysis of Option B. To view this in the ESRI layer view, click: <https://redistrictin...>

Explore



Option B (ESRI Layer View)

The public submitted this map using different software and divided some cities,...

Explore



Option C

ARCBridge analysis of Option C. To view this in the ESRI layer view, click: <https://redistrictin...>

Explore



Option C (ESRI Layer View)

The public submitted this map using different software and divided some cities,...

Explore



Option D

ARCBridge analysis of Option D. To view this in the ESRI layer view, click: <https://redistrictin...>

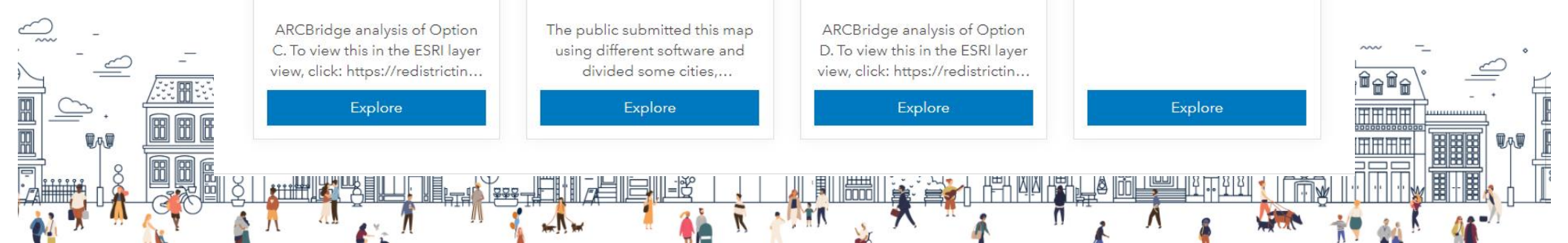
Explore



Option D (ESRI Layer View)

The public submitted this map using different software and divided some cities,...

Explore



# Logistics

---

- Must post agenda with maps under consideration 7 days prior to each Public Hearing
- Public Hearing No. 1 scheduled for Sunday, November 7, at 1:00 p.m. – a virtual meeting
- Number, dates, and times, and formats for subsequent meetings and Public Hearings?
  1. **Sun., Nov. 7 at 1p – Day 1/Public Hearing No. 1** (post map modifications by Nov. 10 for Nov. 17 public hearing)
  2. **Wed., Nov 10 at 7p – Regular Meeting** (can advise ARCBridge to add map modifications to Nov. 17 agenda)
  3. **Wed., Nov 17 at 7p – Public Hearing No. 2/Special Meeting** (post modified maps by Nov. 24)
  4. **Wed., Dec. 1 at 7p – Public Hearing No. 3/Special Meeting** (can advise ARCBridge to add map modifications to Dec. 7 agenda)
  5. **Tues., Dec. 7 at 7p – Day 30 No. 4/Public Hearing** (continued discussions of maps of Dec. 1)
- Interested in December public hearings as hybrid format at Patriotic Hall?
- Interested in having the mapmakers of the 4 map options present their maps at Public Hearing No. 1?





# Public Comment Management

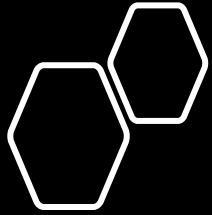
- Suggest that the public only has their audio turned not (not the video) when making public comment – will save time and avoid problems of potential exhibitionists
- Encourage members of the public who want to show support or no support for maps to complete the public comment form online, which will tabulate responses and collate written comments
- Encourage members of the public who want to make adjustments to the maps to either:
  - Complete the online public comment form
  - Make oral public comments on how to improve maps (adjust district boundaries, combine COIs, not split NCs, etc.)





# 6. Executive Director Report

Gayla Kraetsch Hartsough, Ph.D.



# **Commissioner Vaccination Requirements**

Notified that proof of vaccination due to Executive Director by Friday, November 5, 2021



Yesenia and Norberto Diaz stand in the driveway of their home, which is surrounded by bullet-train construction that will eventually block public roads to their house. (Jason Armond / Los Angeles Times)

BY RALPH VARTABEDIAN  
OCT. 29, 2021 6:41 AM PT

SELMA, Calif. — Rodents and bugs infest the abandoned vineyards that surround Norberto and Yesenia Diaz’s rural home, regularly invading their property.

Piles of construction debris tower near their yard, where their favorite neighbor once lived.

Bulldozers, dump trucks and equipment haulers rumble by their home daily, sending plumes of diesel smoke and dust into their front yard.

The family’s once tranquil slice of the San Joaquin Valley sits unbearably close to the nation’s largest infrastructure project, surrounded on four sides by the California bullet train property and construction.

ENTERTAINMENT & ARTS  
Alec Baldwin has long lived at the center of a storm. Now comes a hurricane

CALIFORNIA  
Sheriff: Lead bullet fatally struck 'Rust' cinematographer; 500 rounds of ammo recovered on set

ENTERTAINMENT & ARTS  
Everything we know so far about the fatal shooting of Halyna Hutchins on the 'Rust' set

ADVERTISEMENT  
LOS ANGELES COUNTY REDISTRICTING 2021  
Feedback wanted on proposed L.A. County Supervisor maps in November public hearings.  
CLICK HERE

LATEST CALIFORNIA >

OBITUARIES



starring Disney villains including Cruella from Disney's One Hundred and One Dalmatians movies. It runs on select nights until Oct. 31.

Starting on Nov. 12, Disneyland will launch a holiday parade called A Christmas Fantasy, featuring Santa Claus and the Disney princesses, plus Anna, Elsa and Olaf from the animated movie "Frozen," among others.

Disney has hinted — via [TikTok](#) and [Instagram](#) posts showing a brightly lit character from the parade rolling out of a warehouse — that it may soon revive a nearly 50-year-old fan favorite, the Main Street Electrical Parade. The parade was upgraded in 2017 with thousands of LED lights and a renovated sound system to play the theme song/earworm "[Baroque Hoedown](#)." The parade has been on hiatus since 2019.

Before the pandemic, Disneyland launched [Magic Happens](#), its first new daytime parade in more than nine years. The score and lyrics were created by [Todrick Hall](#), a former Disney performer who gained fame as a [YouTube](#) star and a [Season 9 contestant on ABC's "American Idol](#)." There is no word yet whether that parade will return.



ADVERTISEMENT

LOS ANGELES COUNTY  
REDISTRICTING  
2021

**Feedback wanted  
on proposed  
L.A. County Supervisor  
maps in November  
public hearings.**

**CLICK HERE** ►

ADVERTISEMENT

Feedback wanted on proposed L.A. County Supervisor maps in November public hearings.

CLICK HERE ▶



ENTERTAINMENT & ARTS

# Did 'The Morning Show' just go off a cliff?



ADVERTISEMENT

Learn more



# LATimes.com ROS Mobile Banner 320x50


Los Angeles Times

ADVERTISEMENT

Feedback wanted on proposed L.A. County supervisor maps. [CLICK HERE](#)

SCIENCE

## Is it OK to go trick-or-treating during the pandemic?



Whether you let your children go trick-or-treating during the pandemic will depend on your situation and comfort level. (Peter Hamlin / Associated Press)

BY PETER HAMLIN / ASSOCIATED PRESS

DEPORTES



# Thomas Dulorme: Ven a Jaron Ennis como un prospecto que está subiendo, pero van a estar equivocados



(ASSOCIATED PRESS)

ANUNCIO

**LOS ANGELES COUNTY REDISTRICTING 2021**

Solicitamos comentarios acerca de los mapas propuestos para supervisores del condado de L.A.

HAZ CLIC AQUÍ

NOTAS RECIENTES

- El San Siro será sede de apertura de Juegos de Invierno 2026  
Hace 3 horas
- Coutinho y Firmino regresan a selección para eliminatorias  
Oct. 29, 2021

# LATimes.com En Espanol Half Page 300x600

Secciones

## Los Angeles Times



La primera dama, Hillary Clinton, y Edie Falco como Hillary Clinton en "Impeachment: American Crime Story". (Tim Sloan / AFP via Getty Images; Kurt Iswarienko / FX)

POR MEREDITH BLAKE | STAFF WRITER

OCT. 29, 2021 9:23 AM PT

Lo siguiente contiene spoilers del episodio 8 de "Impeachment: American Crime Story". Los nuevos comentarios completos de la serie están...

ANUNCIO

LOS ANGELES COUNTY  
REDISTRICTING  
2021

Solicitamos comentarios acerca de los mapas propuestos para supervisores del condado de L.A.

HAZ CLIC AQUÍ ►

NOTAS RECIENTES

# LATimes.com En Espanol Leaderboard 728x90

Secciones



ANUNCIO



Solicitamos comentarios acerca de los mapas propuestos para supervisores del condado de L.A. HAZ CLIC AQUÍ

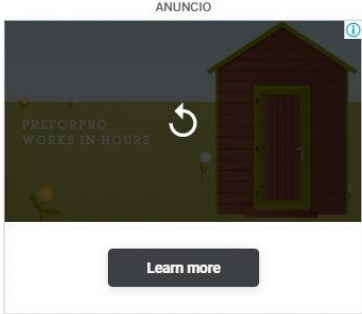


DEPORTES

## Raúl Jiménez: “Ahora disfruto más que nunca del fútbol”



ANUNCIO



PREPRO WORKS IN HOURS

Learn more

# LATimes.com En Espanol Mobile Banner 320x50

Los Angeles Times

ANUNCIO

Solicitamos comentarios acerca de los mapas propuestos para supervisores del condado de L.A. HAZ CLIC AQUI ▶

CALIFORNIA

## California planea un ambicioso esfuerzo para vacunar a los niños pequeños





# **Spanish Interpreters for Public Hearings**



# Adjournment

Co-Chair Daniel Mayeda

To learn about the LA County CRC, sign up at:  
<https://redistricting.lacounty.gov/>

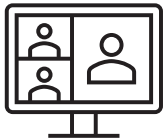




Sign up and stay informed: <https://redistricting.lacounty.gov>



**November meetings will be virtual until further notice.** If we offer hybrid formats in the future, attendance in person in keeping with COVID-19 health safety protocols – **masks required**



Attend and participate virtually in CRC meetings and public hearings:  
<https://us02web.zoom.us/j/82726060927>



Listen only to CRC meetings and public hearings by calling:  
(669) 900-9128, enter: 827 2606 0927#



View CRC meetings and public hearings on YouTube:  
<https://www.youtube.com/LACountyRedistricting/>



Submit written comments via:  
<https://publiccomment.redistricting.lacounty.gov/>  
By mail: Los Angeles County CRC, P.O. Box 56447, Sherman Oaks, CA 91413



## LA County CRC Resource Support

### Staff

Gayla Kraetsch Hartsough, Ph.D.  
LA County CRC Executive Director  
President, KH Consulting Group  
Associate Adjunct Faculty, University of Southern California  
[ghartsough@crc.lacounty.gov](mailto:ghartsough@crc.lacounty.gov)

Thai V. Le  
LA County CRC Clerk  
Consultant, KH Consulting Group  
Doctoral Candidate, University of Southern California  
GIS, Public Policy, and Technical Support  
[tle@crc.lacounty.gov](mailto:tle@crc.lacounty.gov)

### Subject Matter Experts

Carlos De Alba, Marketing, Media, and Outreach Consultant

Priti Mathur, ARCBridge  
Demographic Analysis and ESRI Mapping Software

Bruce Adelson, Esq., Federal Compliance Consulting LLC  
Professor Jonathan N. Katz, Ph.D., Caltech  
Racially Polarized Voting Analysis

### Independent Legal Counsel

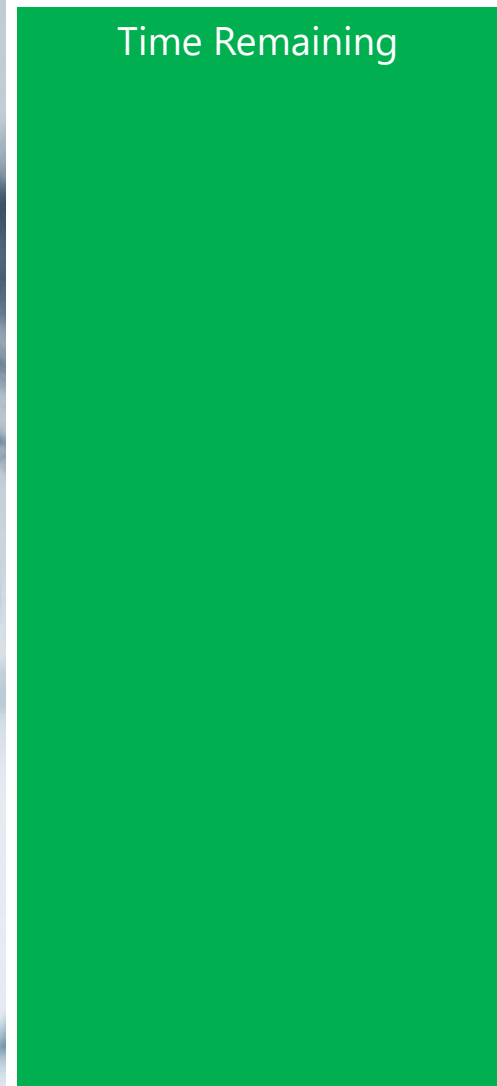
Holly O. Whatley, Esq., Shareholder  
Aleks R. Giragosian, Esq., Senior Counsel  
Pamela Graham, Esq., Senior Counsel

Colantuono, Highsmith & Whatley, PC 790 E.  
Colorado Blvd., Suite 850  
Pasadena, CA 91101-2109  
(213) 542-5700 tel  
(213) 542-5710 fax  
[hwhatley@chwlaw.us](mailto:hwhatley@chwlaw.us)



**Public Comment: 1 Minute**

Time Remaining







# Public Comment: 2 Minutes

Time Remaining





# LOS ANGELES COUNTY REDISTRICTING 2021

## Public Comment: 3 Minutes

Time Remaining





# Times Up! Wrap Up





# Citizens Redistricting Commission (CRC) Meeting

**\* RECESS \***

**LIVE STREAM WILL RESUME SHORTLY**

---



LOS ANGELES COUNTY  
**REDISTRICTING**  
2021

