



LOS ANGELES COUNTY **REDISTRICTING 2021**

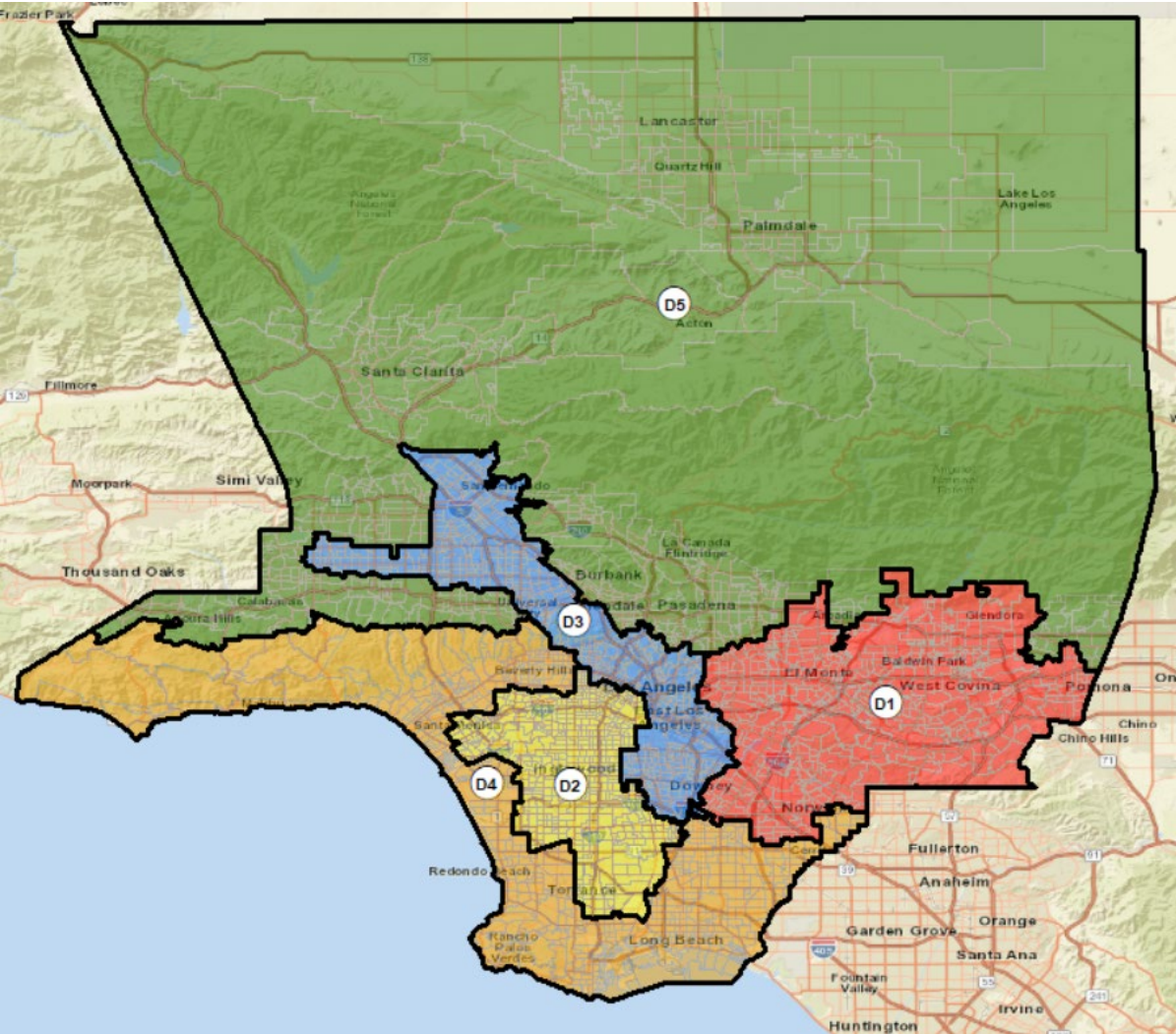
ANALYSIS OF SUBMITTED Plan
Name: OP-007

Presentation to the County of LOS ANGELES
CITIZENS REDISTRICTING COMMISSION

ARCBridge Consulting & Training Inc.
www.arcbridge.com



Plan Name: OP-007

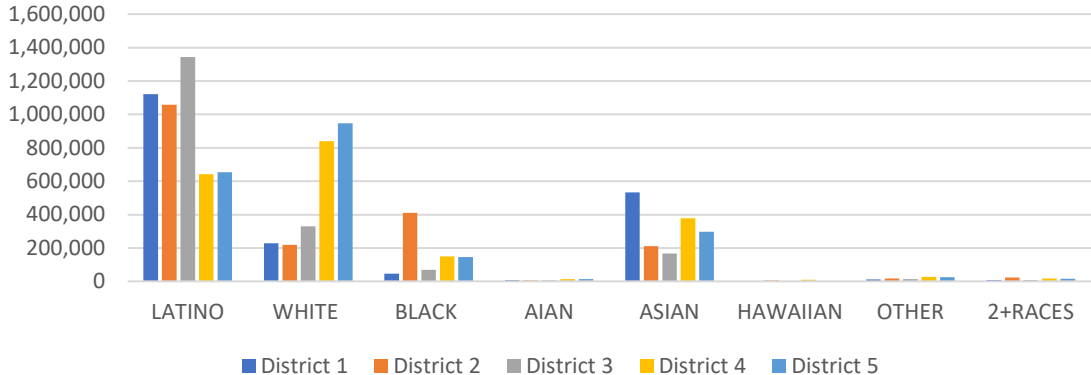


Maximum Deviation – 7.92

Name	Total Pop	Deviation	Deviation %
1	1,962,338	-47,247	-2.35%
2	1,954,571	-55,014	-2.74%
3	1,946,086	-63,499	-3.16%
4	2,079,636	70,051	3.49%
5	2,105,295	95,710	4.76%

District	Latino	%	White	%	Black	%	Asian	%
1	1,122,391	57.20%	229,006	11.67%	46,725	2.38%	532,534	27.14%
2	1,057,717	54.12%	219,290	11.22%	411,021	21.03%	211,336	10.81%
3	1,344,470	69.09%	331,174	17.02%	69,765	3.58%	168,299	8.65%
4	642,836	30.91%	839,494	40.37%	149,277	7.18%	377,850	18.17%
5	654,289	31.08%	946,977	44.98%	146,043	6.94%	298,073	14.16%

Ethnic and Racial Information by District



CENSUS 2020 POPULATION AND CITIZEN VOTING AGE POPULATION

TOTAL POPULATION

Race Info	District 1	District 2	District 3	District 4	District 5
LATINO	1,122,391	1,057,717	1,344,470	642,836	654,289
LATINO %	57.20%	54.12%	69.09%	30.91%	31.08%
WHITE	229,006	219,290	331,174	839,494	946,977
WHITE%	11.67%	11.22%	17.02%	40.37%	44.98%
BLACK	46,725	411,021	69,765	149,277	146,043
BLACK %	2.38%	21.03%	3.58%	7.18%	6.94%
AIAN	7,734	6,562	7,022	13,380	14,561
AIAN %	0.39%	0.34%	0.36%	0.64%	0.69%
ASIAN	532,534	211,336	168,299	377,850	298,073
ASIAN %	27.14%	10.81%	8.65%	18.17%	14.16%
HAWAIIAN	3,009	6,662	2,045	10,472	3,451
HAWAIIAN %	0.15%	0.34%	0.11%	0.50%	0.16%
OTHER	11,899	18,740	14,423	27,980	25,417
OTHER %	0.61%	0.96%	0.74%	1.35%	1.21%
2+RACES	9,040	23,243	8,888	18,347	16,484
2+RACES%	0.46%	1.19%	0.46%	0.88%	0.78%
TOTAL	1,962,338	1,954,571	1,946,086	2,079,636	2,105,295

VOTING AGE POPULATION

District 1	District 2	District 3	District 4	District 5
844,391	773,237	1,004,751	479,771	477,545
54.23%	50.43%	65.94%	28.16%	28.49%
203,635	193,931	290,682	737,438	802,441
13.08%	12.65%	19.08%	43.29%	47.88%
38,819	336,527	58,748	120,335	111,951
2.49%	21.95%	3.86%	7.06%	6.68%
6,561	5,444	6,004	11,738	12,147
0.42%	0.36%	0.39%	0.69%	0.72%
446,253	186,905	145,379	311,405	238,701
28.66%	12.19%	9.54%	18.28%	14.24%
2,409	5,272	1,614	8,232	2,746
0.15%	0.34%	0.11%	0.48%	0.16%
8,523	13,948	10,249	21,853	19,136
0.55%	0.91%	0.67%	1.28%	1.14%
6,526	17,918	6,326	12,829	11,393
0.42%	1.17%	0.42%	0.75%	0.68%
1,557,117	1,533,182	1,523,753	1,703,601	1,676,060

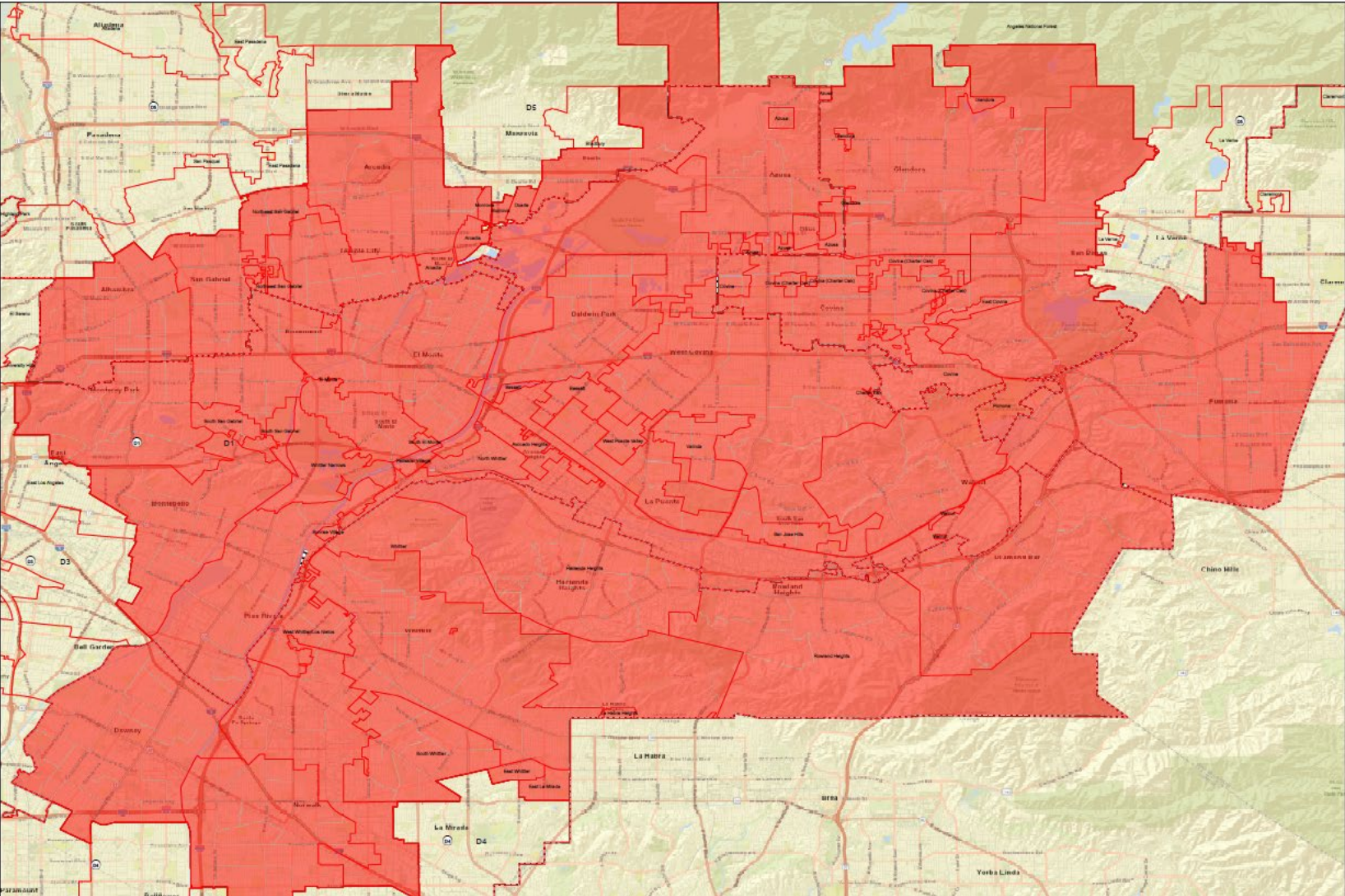
CITIZEN VOTING AGE POPULATION

District 1	District 2	District 3	District 4	District 5
656,592	434,709	658,853	344,637	356,977
52.07%	40.01%	59.28%	24.17%	24.95%
221,672	169,404	272,964	709,157	770,483
17.58%	15.59%	24.56%	49.74%	53.85%
37,049	339,489	55,621	112,878	105,104
2.94%	31.25%	5.00%	7.92%	7.35%
N/A	N/A	N/A	N/A	N/A
N/A	N/A	N/A	N/A	N/A
331,568	123,882	113,420	233,859	179,040
26.30%	11.40%	10.20%	16.40%	12.51%
N/A	N/A	N/A	N/A	N/A
N/A	N/A	N/A	N/A	N/A
14,168	18,873	10,532	25,042	19,338
1.12%	1.74%	0.95%	1.76%	1.35%
N/A	N/A	N/A	N/A	N/A
N/A	N/A	N/A	N/A	N/A
1,260,936	1,086,525	1,111,475	1,425,673	1,430,871

NUMBER OF SPLIT CITIES/CSAS, LA CITY NEIGHBORHOOD COUNCILS, COIS

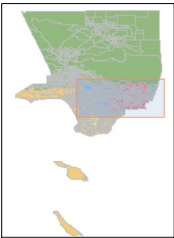
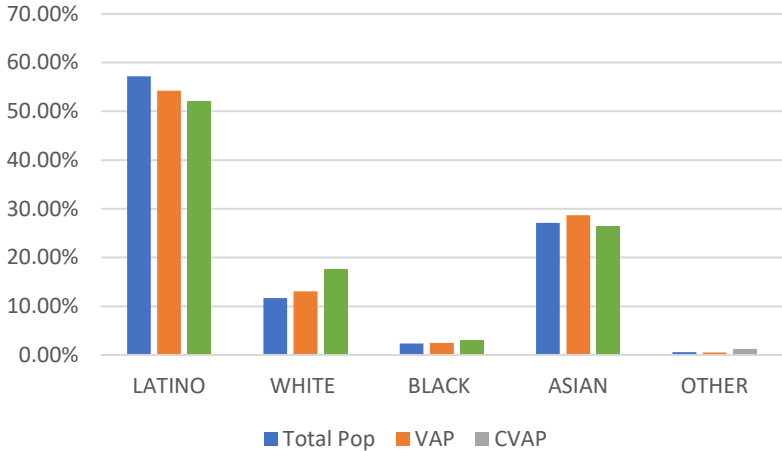
CITIES - CSAS	NEIGHBORHOOD COUNCILS	COI-A	COI-B	COI-C
27	10	12	11	13

District 1 - Plan Name: OP-007



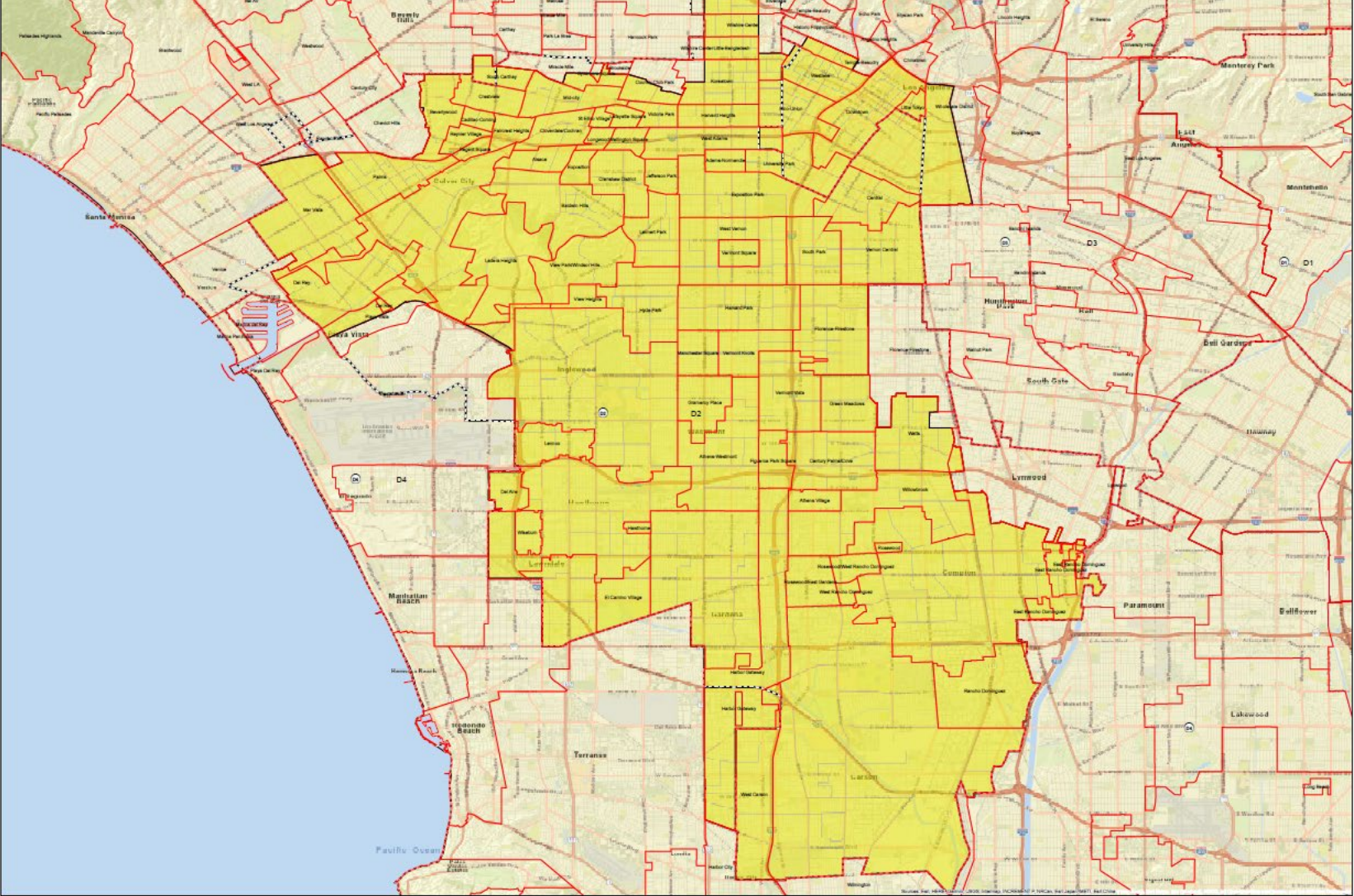
Name	Total Pop	Deviation	Deviation %
1	1,962,338	-47,247	-2.35%

Total Pop, VAP, CVAP



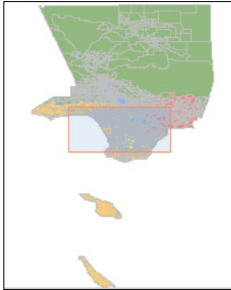
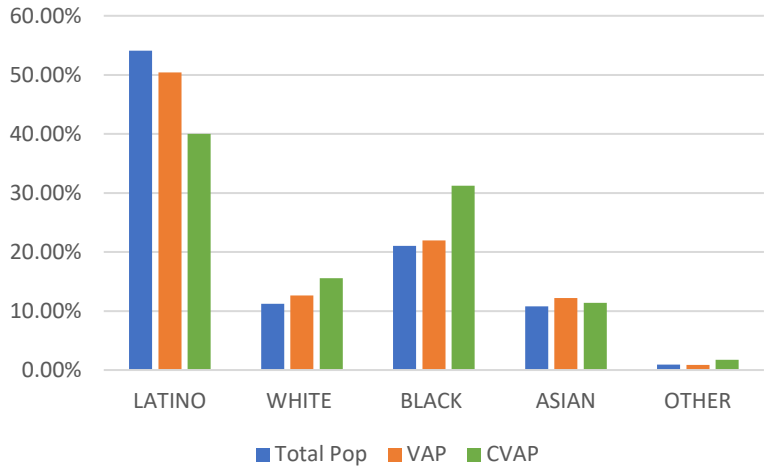
District 1	Total Pop	VAP	CVAP
LATINO	57.20%	54.23%	52.07%
WHITE	11.67%	13.08%	17.58%
BLACK	2.38%	2.49%	2.94%
ASIAN	27.14%	28.66%	26.30%
OTHER	0.61%	0.55%	1.12%

District 2 - Plan Name: OP-007



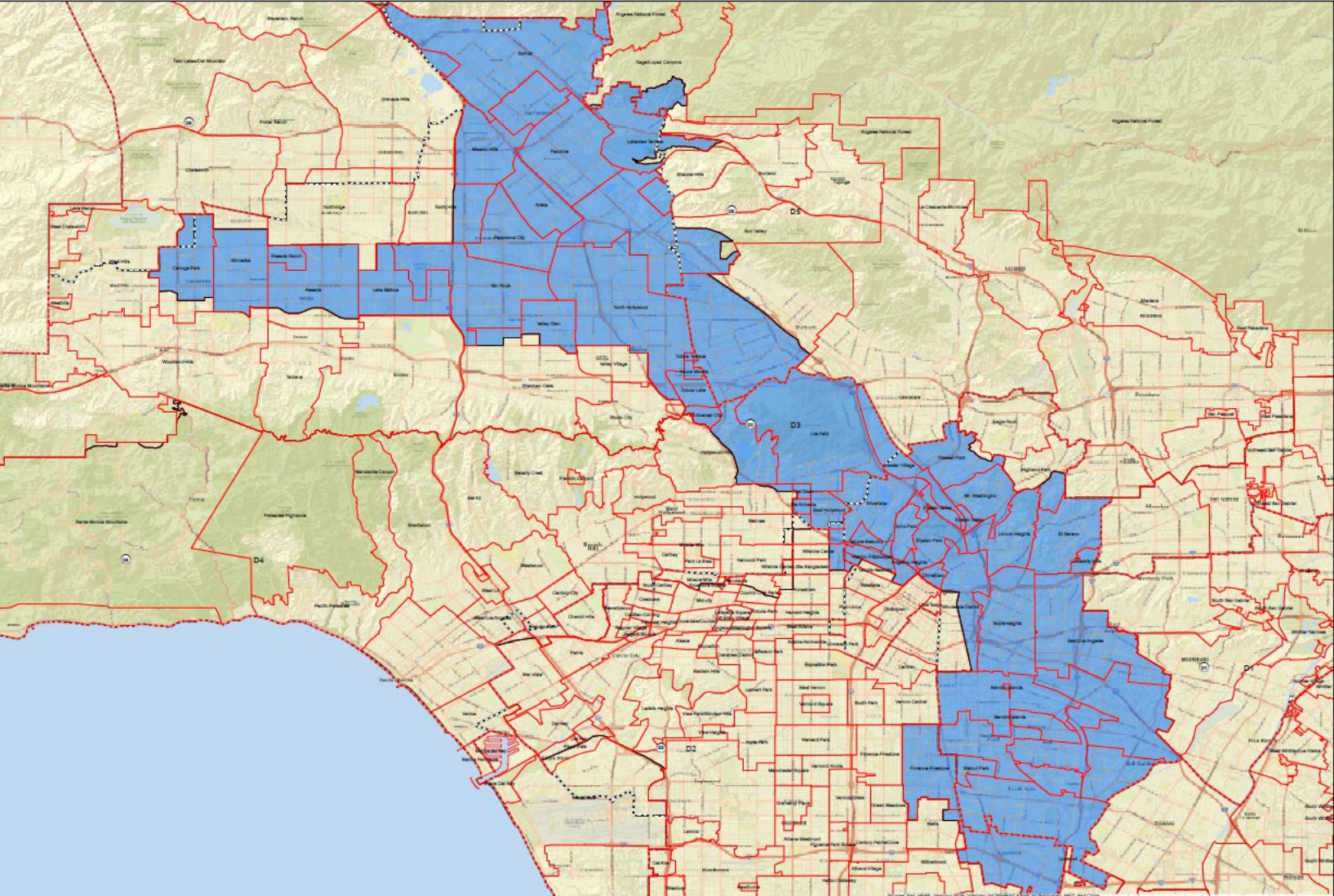
Name	Total Pop	Deviation	Deviation %
2	1,954,571	-55,014	-2.74%

Total Pop, VAP, CVAP



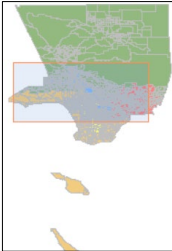
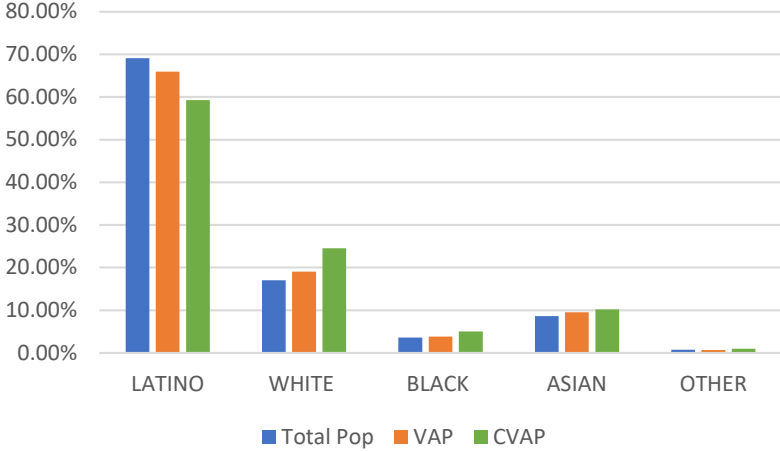
District 2	Total Pop	VAP	CVAP
LATINO	54.12%	50.43%	40.01%
WHITE	11.22%	12.65%	15.59%
BLACK	21.03%	21.95%	31.25%
ASIAN	10.81%	12.19%	11.40%
OTHER	0.96%	0.91%	1.74%

District 3 - Plan Name: OP-007



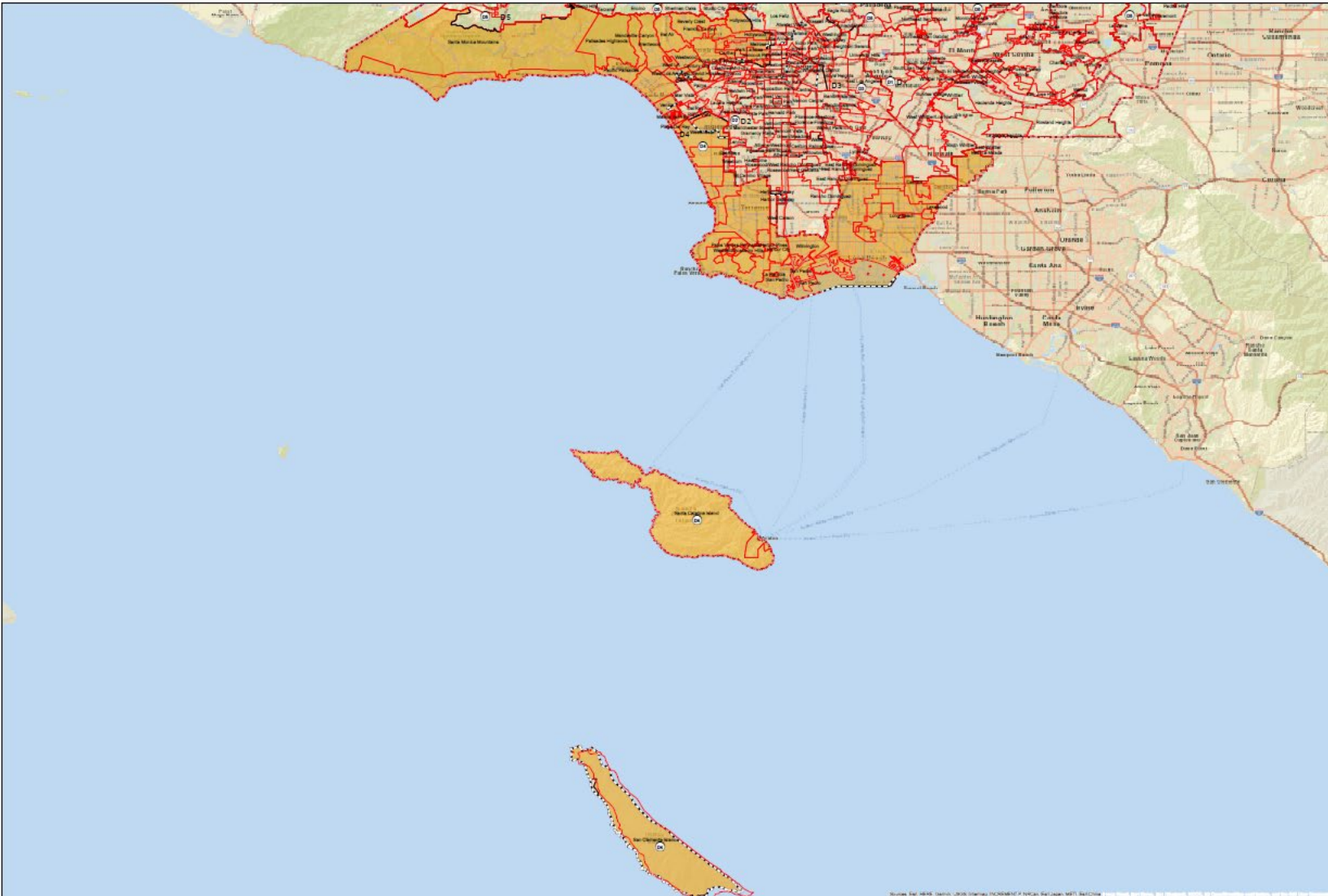
Name	Total Pop	Deviation	Deviation %
3	1,946,086	-63,499	-3.16%

Total Pop, VAP, CVAP



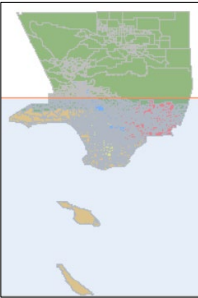
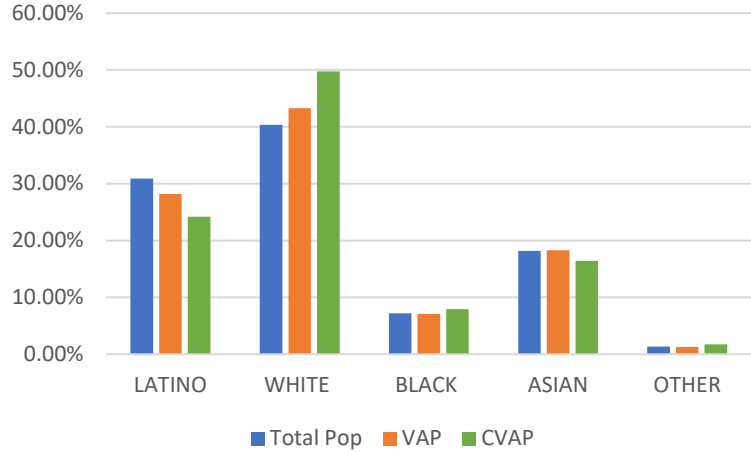
District 3	Total Pop	VAP	CVAP
LATINO	69.09%	65.94%	59.28%
WHITE	17.02%	19.08%	24.56%
BLACK	3.58%	3.86%	5.00%
ASIAN	8.65%	9.54%	10.20%
OTHER	0.74%	0.67%	0.95%

District 4 - Plan Name: OP-007



Name	Total Pop	Deviation	Deviation %
4	2,079,636	70,051	3.49%

Total Pop, VAP, CVAP



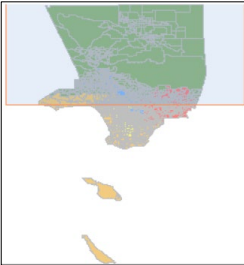
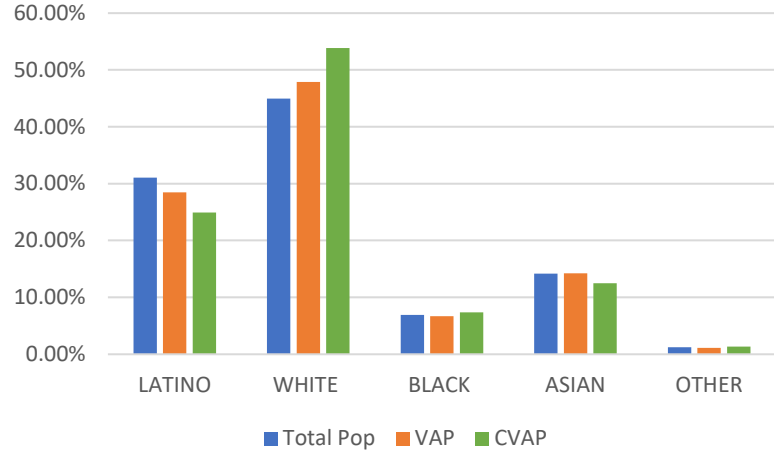
District 4	Total Pop	VAP	CVAP
LATINO	30.91%	28.16%	24.17%
WHITE	40.37%	43.29%	49.74%
BLACK	7.18%	7.06%	7.92%
ASIAN	18.17%	18.28%	16.40%
OTHER	1.35%	1.28%	1.76%

District 5 - Plan Name: OP-007



Name	Total Pop	Deviation	Deviation %
5	2,105,295	95,710	4.76%

Total Pop, VAP, CVAP



District 5	Total Pop	VAP	CVAP
LATINO	31.08%	28.49%	24.95%
WHITE	44.98%	47.88%	53.85%
BLACK	6.94%	6.68%	7.35%
ASIAN	14.16%	14.24%	12.51%
OTHER	1.21%	1.14%	1.35%

