



LOS ANGELES COUNTY **REDISTRICTING 2021**

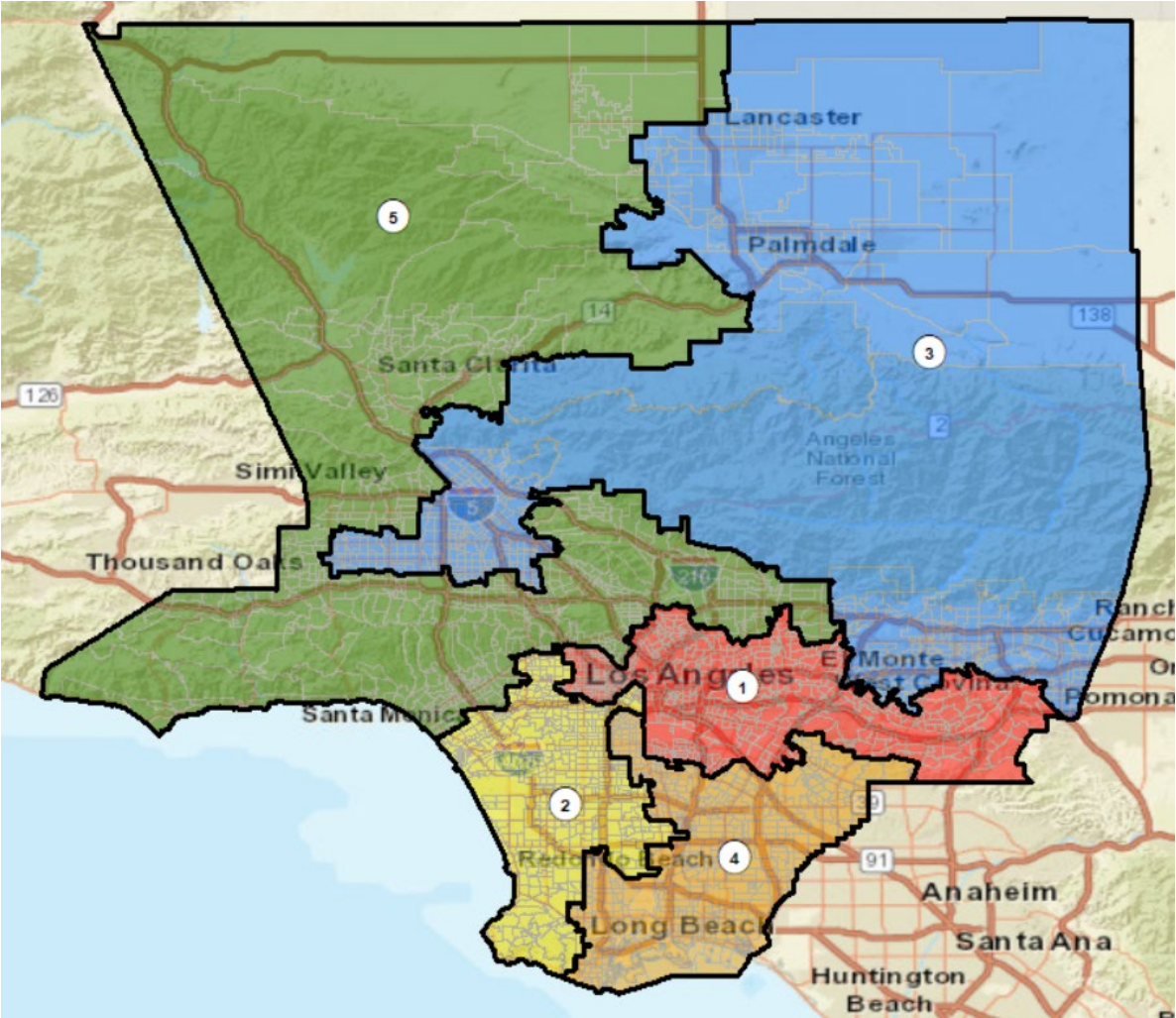
ANALYSIS OF SUBMITTED Plan
Name: OP-006

Presentation to the County of LOS ANGELES
CITIZENS REDISTRICTING COMMISSION

ARCBridge Consulting & Training Inc.
www.arcbridge.com



Plan Name: OP-006

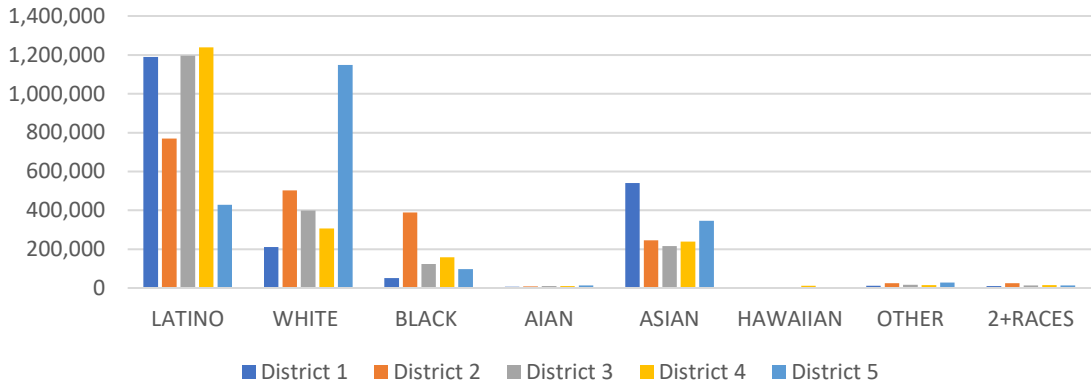


Maximum Deviation – 5.42

Name	Total Pop	Deviation	Deviation %
1	2,023,065	13,480	0.67%
2	1,970,304	-39,281	-1.95%
3	1,979,363	-30,222	-1.50%
4	1,995,889	-13,696	-0.68%
5	2,079,305	69,720	3.47%

District	Latino	%	White	%	Black	%	Asian	%
1	1,188,760	58.76%	210,546	10.41%	52,032	2.57%	541,333	26.76%
2	768,927	39.03%	502,408	25.50%	389,290	19.76%	245,164	12.44%
3	1,195,611	60.40%	398,973	20.16%	124,603	6.30%	216,514	10.94%
4	1,239,415	62.10%	306,324	15.35%	159,095	7.97%	239,122	11.98%
5	428,990	20.63%	1,147,690	55.20%	97,811	4.70%	345,959	16.64%

Ethnic and Racial Information by District



CENSUS 2020 POPULATION AND CITIZEN VOTING AGE POPULATION

TOTAL POPULATION

Race Info	District 1	District 2	District 3	District 4	District 5
LATINO	1,188,760	768,927	1,195,611	1,239,415	428,990
LATINO %	58.76%	39.03%	60.40%	62.10%	20.63%
WHITE	210,546	502,408	398,973	306,324	1,147,690
WHITE%	10.41%	25.50%	20.16%	15.35%	55.20%
BLACK	52,032	389,290	124,603	159,095	97,811
BLACK %	2.57%	19.76%	6.30%	7.97%	4.70%
AIAN	6,276	8,919	10,934	10,039	13,091
AIAN %	0.31%	0.45%	0.55%	0.50%	0.63%
ASIAN	541,333	245,164	216,514	239,122	345,959
ASIAN %	26.76%	12.44%	10.94%	11.98%	16.64%
HAWAIIAN	1,889	6,135	2,940	11,413	3,262
HAWAIIAN %	0.09%	0.31%	0.15%	0.57%	0.16%
OTHER	12,653	25,004	16,911	15,746	28,145
OTHER %	0.63%	1.27%	0.85%	0.79%	1.35%
2+RACES	9,576	24,457	12,877	14,735	14,357
2+RACES%	0.47%	1.24%	0.65%	0.74%	0.69%
TOTAL	2,023,065	1,970,304	1,979,363	1,995,889	2,079,305

VOTING AGE POPULATION

District 1	District 2	District 3	District 4	District 5
902,464	566,848	875,691	906,698	327,994
55.58%	35.91%	57.23%	58.71%	19.10%
190,470	438,752	345,141	272,085	981,679
11.73%	27.79%	22.56%	17.62%	57.18%
45,440	319,198	95,196	125,530	81,016
2.80%	20.22%	6.22%	8.13%	4.72%
5,230	7,622	9,215	8,693	11,134
0.32%	0.48%	0.60%	0.56%	0.65%
462,483	203,724	181,289	200,571	280,576
28.48%	12.90%	11.85%	12.99%	16.34%
1,515	4,808	2,374	8,999	2,577
0.09%	0.30%	0.16%	0.58%	0.15%
9,113	19,171	12,161	11,467	21,797
0.56%	1.21%	0.79%	0.74%	1.27%
6,910	18,607	9,049	10,251	10,175
0.43%	1.18%	0.59%	0.66%	0.59%
1,623,625	1,578,730	1,530,116	1,544,294	1,716,948

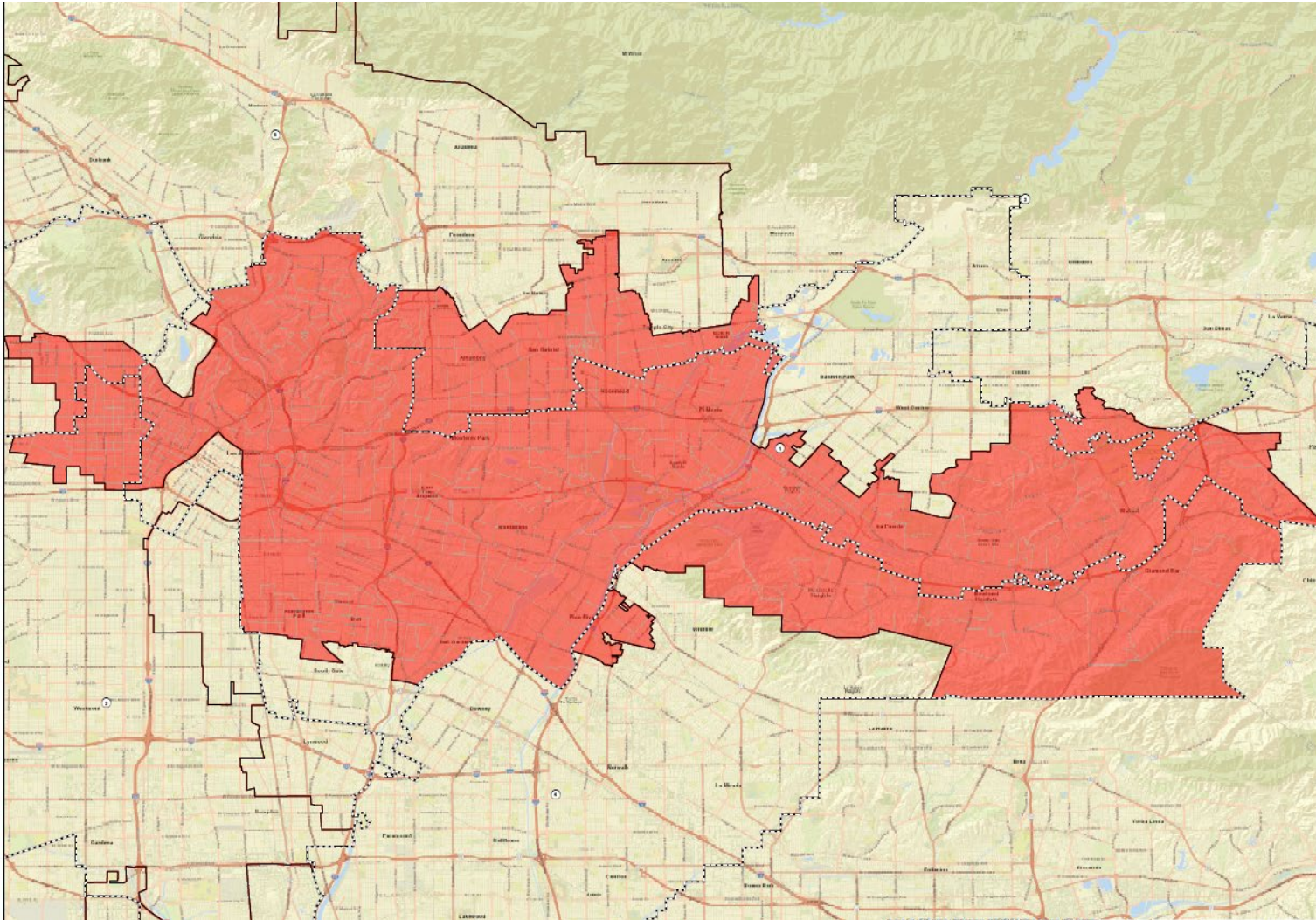
CITIZEN VOTING AGE POPULATION

District 1	District 2	District 3	District 4	District 5
619,155	352,919	612,444	618,841	248,409
51.51%	28.41%	51.52%	51.51%	16.77%
183,590	403,613	344,370	284,945	927,162
15.27%	32.50%	28.97%	23.72%	62.59%
44,377	322,903	86,254	118,962	77,645
3.69%	26.00%	7.26%	9.90%	5.24%
N/A	N/A	N/A	N/A	N/A
N/A	N/A	N/A	N/A	N/A
341,739	142,632	130,127	157,992	209,279
28.43%	11.48%	10.95%	13.15%	14.13%
N/A	N/A	N/A	N/A	N/A
N/A	N/A	N/A	N/A	N/A
12,918	19,955	15,577	20,547	18,956
1.07%	1.61%	1.31%	1.71%	1.28%
N/A	N/A	N/A	N/A	N/A
N/A	N/A	N/A	N/A	N/A
1,202,049	1,242,032	1,188,700	1,201,371	1,481,328

NUMBER OF SPLIT CITIES/CSAS, LA CITY NEIGHBORHOOD COUNCILS, COIS

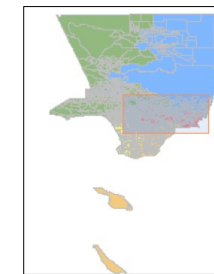
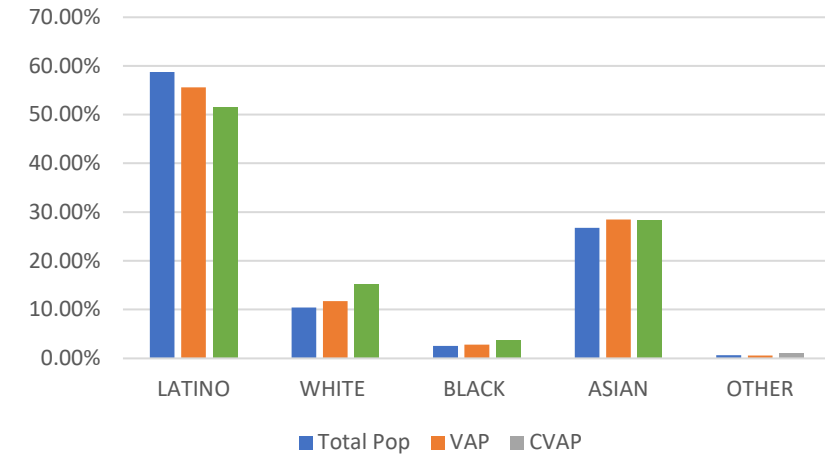
CITIES - CSAS	NEIGHBORHOOD COUNCILS	COI-A	COI-B	COI-C
44	23	18	13	16

District 1 - Plan Name: OP-006



Name	Total Pop	Deviation	Deviation %
1	2,023,065	13,480	0.67%

Total Pop, VAP, CVAP

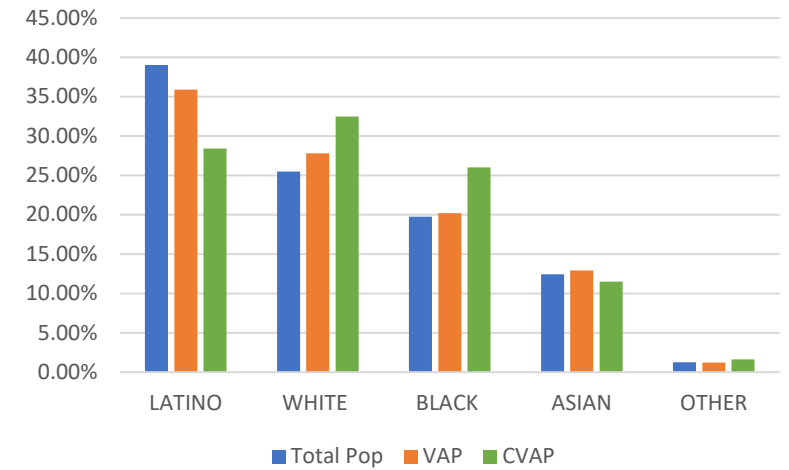


District 1	Total Pop	VAP	CVAP
LATINO	58.76%	55.58%	51.51%
WHITE	10.41%	11.73%	15.27%
BLACK	2.57%	2.80%	3.69%
ASIAN	26.76%	28.48%	28.43%
OTHER	0.63%	0.56%	1.07%

District 2 - Plan Name: OP-006

Name	Total Pop	Deviation	Deviation %
2	1,970,304	-39,281	-1.95%

Total Pop, VAP, CVAP



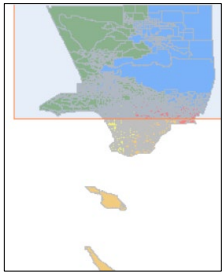
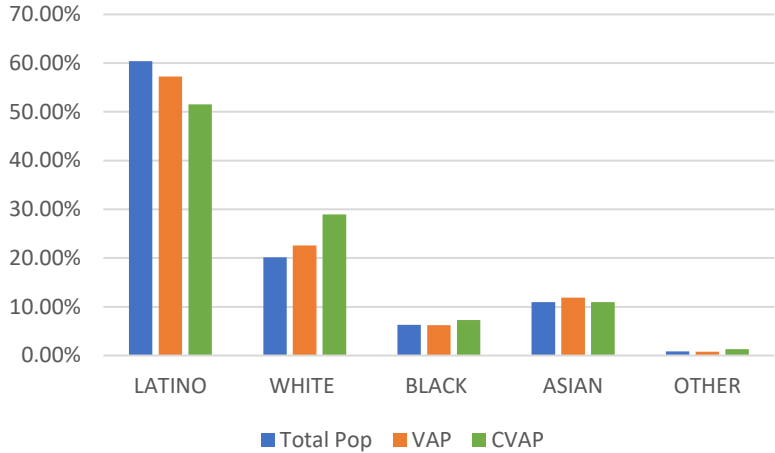
District 2	Total Pop	VAP	CVAP
LATINO	39.03%	35.91%	28.41%
WHITE	25.50%	27.79%	32.50%
BLACK	19.76%	20.22%	26.00%
ASIAN	12.44%	12.90%	11.48%
OTHER	1.27%	1.21%	1.61%

District 3 - Plan Name: OP-006



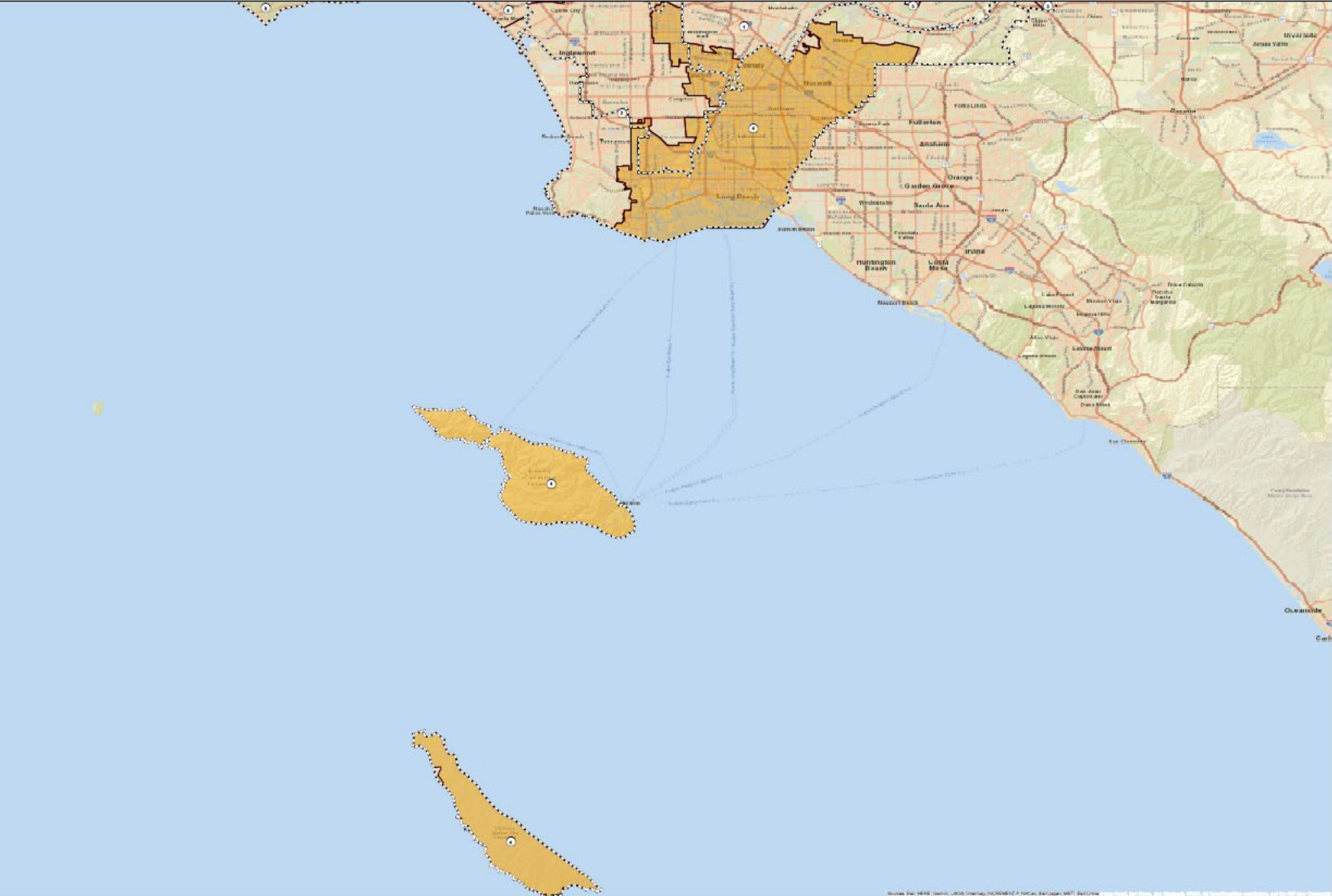
Name	Total Pop	Deviation	Deviation %
3	1,979,363	-30,222	-1.50%

Total Pop, VAP, CVAP



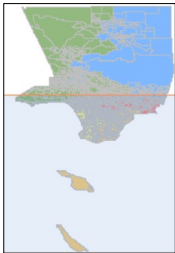
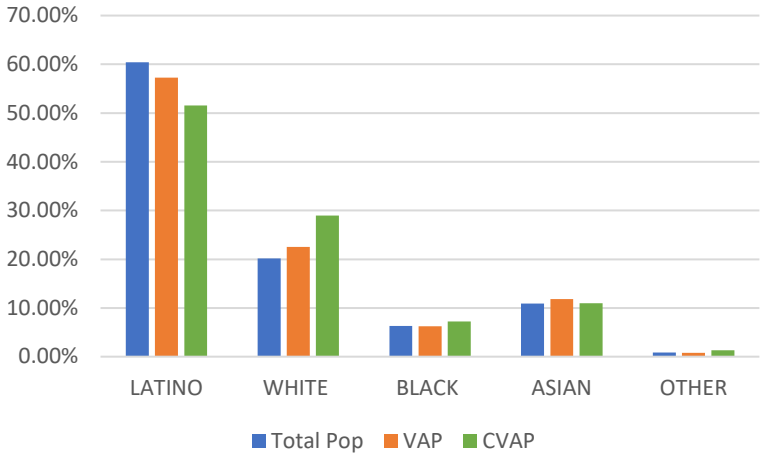
District 3	Total Pop	VAP	CVAP
LATINO	60.40%	57.23%	51.52%
WHITE	20.16%	22.56%	28.97%
BLACK	6.30%	6.22%	7.26%
ASIAN	10.94%	11.85%	10.95%
OTHER	0.85%	0.79%	1.31%

District 4 - Plan Name: OP-006



Name	Total Pop	Deviation	Deviation %
4	1,995,889	-13,696	-0.68%

Total Pop, VAP, CVAP



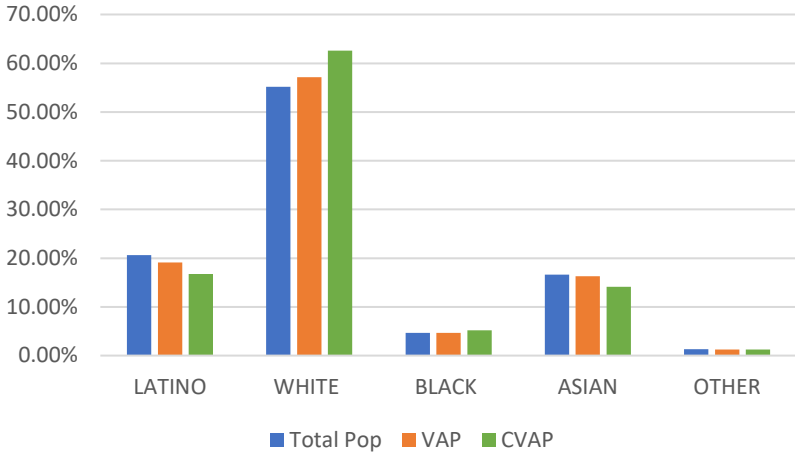
District 4	Total Pop	VAP	CVAP
LATINO	62.10%	58.71%	51.51%
WHITE	15.35%	17.62%	23.72%
BLACK	7.97%	8.13%	9.90%
ASIAN	11.98%	12.99%	13.15%
OTHER	0.79%	0.74%	1.71%

District 5 - Plan Name: OP-006



Name	Total Pop	Deviation	Deviation %
5	2,079,305	69,720	3.47%

Total Pop, VAP, CVAP



District 5	Total Pop	VAP	CVAP
LATINO	20.63%	19.10%	16.77%
WHITE	55.20%	57.18%	62.59%
BLACK	4.70%	4.72%	5.24%
ASIAN	16.64%	16.34%	14.13%
OTHER	1.35%	1.27%	1.28%