



LOS ANGELES COUNTY **REDISTRICTING 2021**

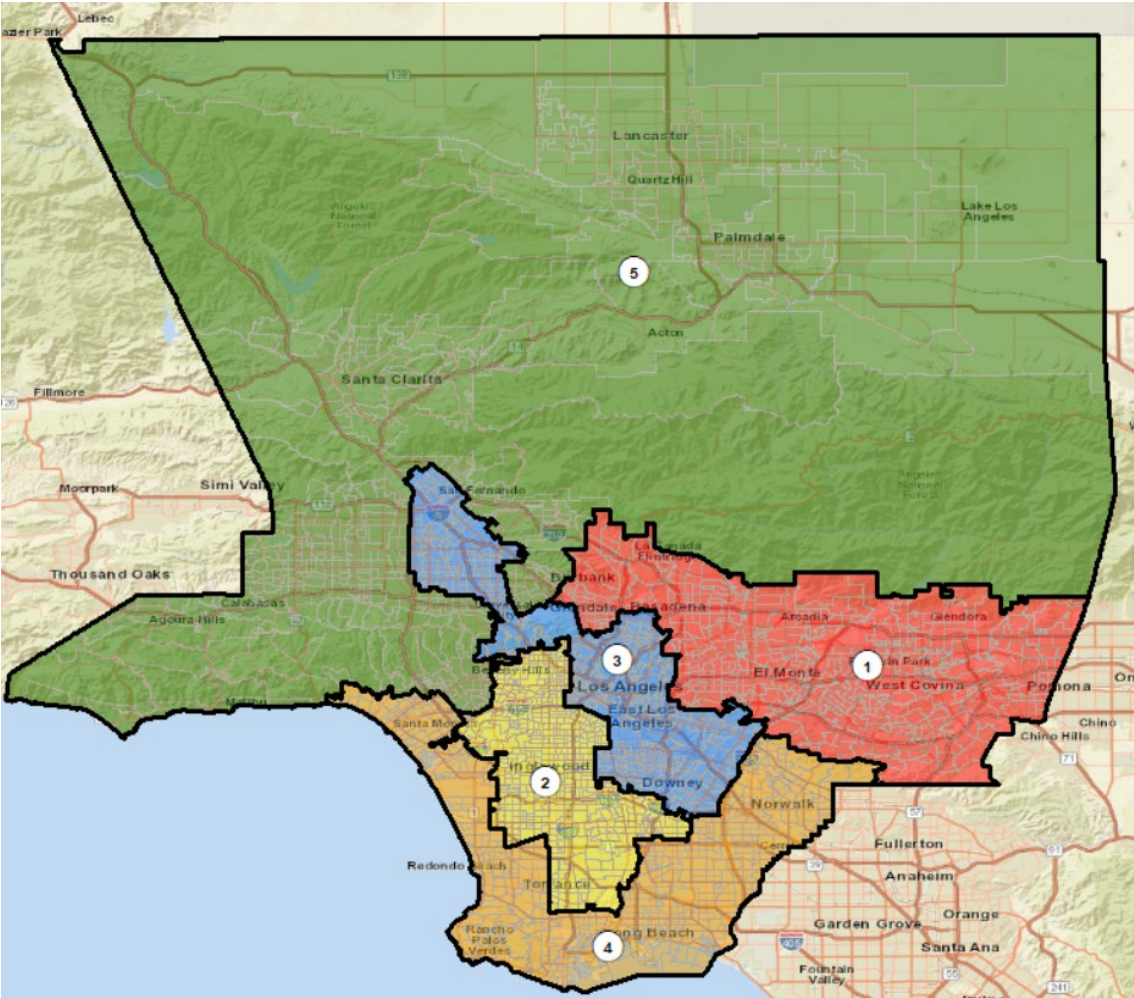
ANALYSIS OF SUBMITTED Plan
Name: OP-005

Presentation to the County of LOS ANGELES
CITIZENS REDISTRICTING COMMISSION

ARCBridge Consulting & Training Inc.
www.arcbridge.com



Plan Name: OP-005

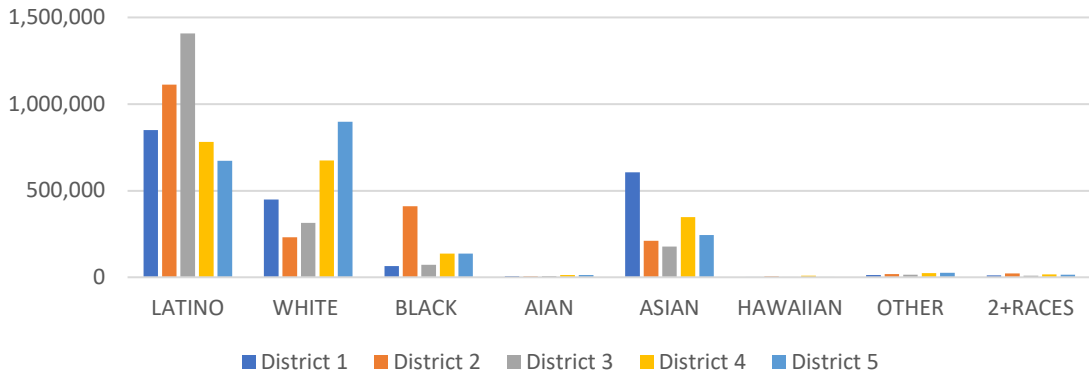


Maximum Deviation – 0.76%

Name	Total Pop	Deviation	Deviation %
1	2,006,722	-2,863	-0.14%
2	2,018,522	8,937	0.44%
3	2,003,232	-6,353	-0.32%
4	2,007,880	-1,705	-0.08%
5	2,011,570	1,985	0.10%

District	Latino	%	White	%	Black	%	Asian	%
1	849,084	42.31%	448,932	22.37%	65,486	3.26%	606,657	30.23%
2	1,110,978	55.04%	231,785	11.48%	410,457	20.33%	210,312	10.42%
3	1,406,231	70.20%	313,982	15.67%	71,893	3.59%	177,435	8.86%
4	782,100	38.95%	673,855	33.56%	137,751	6.86%	348,529	17.36%
5	673,310	33.47%	897,387	44.61%	137,244	6.82%	245,159	12.19%

Ethnic and Racial Information by District



CENSUS 2020 POPULATION AND CITIZEN VOTING AGE POPULATION

TOTAL POPULATION

Race Info	District 1	District 2	District 3	District 4	District 5
LATINO	849,084	1,110,978	1,406,231	782,100	673,310
LATINO %	42.31%	55.04%	70.20%	38.95%	33.47%
WHITE	448,932	231,785	313,982	673,855	897,387
WHITE%	22.37%	11.48%	15.67%	33.56%	44.61%
BLACK	65,486	410,457	71,893	137,751	137,244
BLACK %	3.26%	20.33%	3.59%	6.86%	6.82%
AIAN	8,314	6,326	7,537	13,131	13,951
AIAN %	0.41%	0.31%	0.38%	0.65%	0.69%
ASIAN	606,657	210,312	177,435	348,529	245,159
ASIAN %	30.23%	10.42%	8.86%	17.36%	12.19%
HAWAIIAN	2,463	6,962	2,182	10,624	3,408
HAWAIIAN %	0.12%	0.34%	0.11%	0.53%	0.17%
OTHER	14,404	18,629	14,862	24,545	26,019
OTHER %	0.72%	0.92%	0.74%	1.22%	1.29%
2+RACES	11,382	23,073	9,110	17,345	15,092
2+RACES%	0.57%	1.14%	0.45%	0.86%	0.75%
TOTAL	2,006,722	2,018,522	2,003,232	2,007,880	2,011,570

VOTING AGE POPULATION

District 1	District 2	District 3	District 4	District 5
638,480	812,372	1,058,140	580,770	489,933
39.52%	51.38%	66.92%	35.92%	30.64%
390,442	206,955	278,367	591,115	761,248
24.17%	13.09%	17.60%	36.56%	47.61%
55,048	334,890	62,327	109,666	104,449
3.41%	21.18%	3.94%	6.78%	6.53%
7,029	5,256	6,481	11,421	11,707
0.44%	0.33%	0.41%	0.71%	0.73%
503,806	184,380	156,715	284,744	198,998
31.18%	11.66%	9.91%	17.61%	12.45%
2,004	5,508	1,759	8,326	2,676
0.12%	0.35%	0.11%	0.51%	0.17%
10,636	13,915	10,826	18,958	19,374
0.66%	0.88%	0.68%	1.17%	1.21%
8,252	17,746	6,623	11,995	10,376
0.51%	1.12%	0.42%	0.74%	0.65%
1,615,697	1,581,022	1,581,238	1,616,995	1,598,761

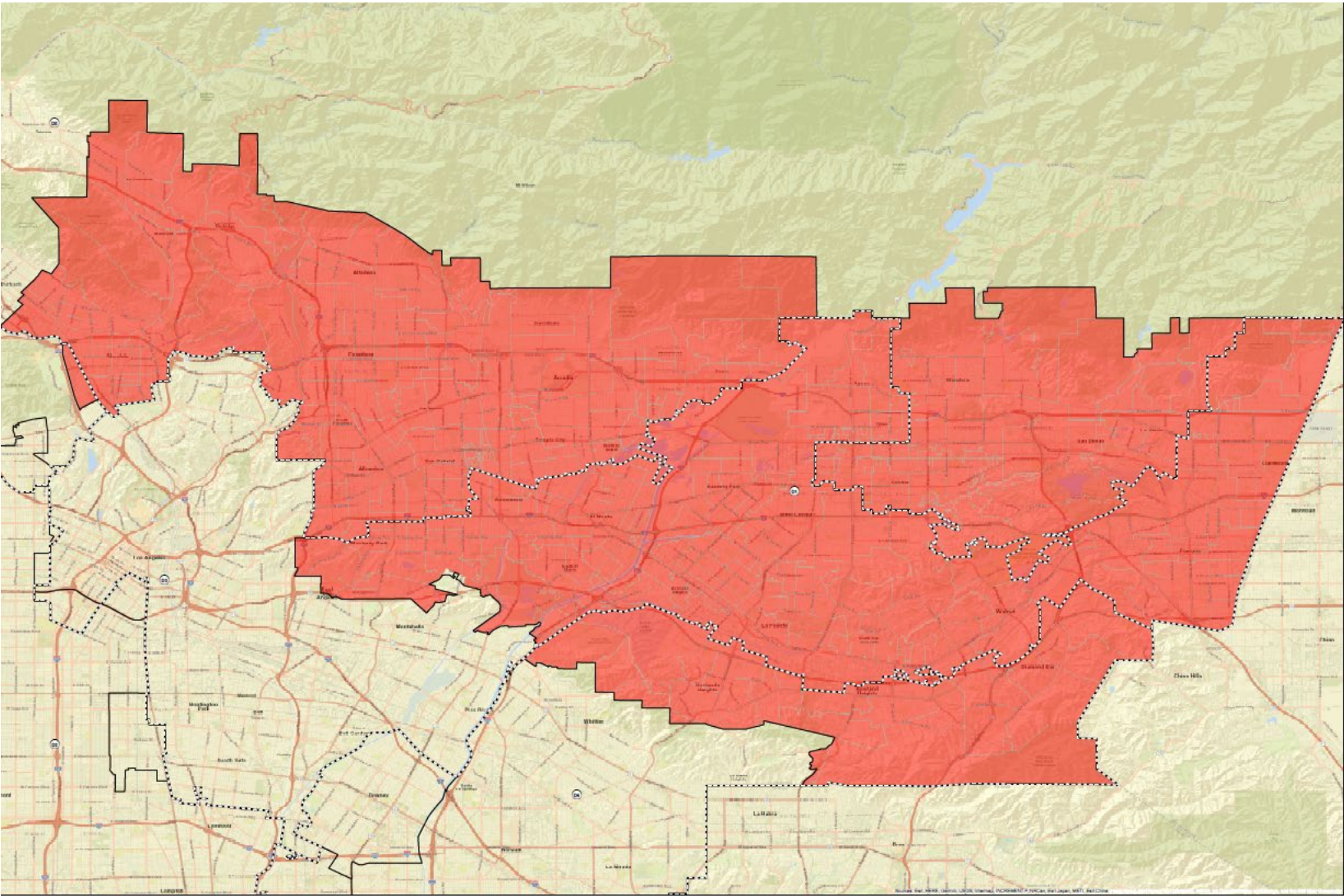
CITIZEN VOTING AGE POPULATION

District 1	District 2	District 3	District 4	District 5
489,921	473,362	702,295	436,630	349,560
37.40%	41.40%	61.29%	32.09%	25.79%
377,807	186,190	256,740	579,832	743,111
28.84%	16.28%	22.41%	42.61%	54.82%
55,352	339,558	57,326	103,330	94,575
4.23%	29.70%	5.00%	7.59%	6.98%
N/A	N/A	N/A	N/A	N/A
N/A	N/A	N/A	N/A	N/A
371,217	125,210	118,937	217,028	149,377
28.34%	10.95%	10.38%	15.95%	11.02%
N/A	N/A	N/A	N/A	N/A
N/A	N/A	N/A	N/A	N/A
15,622	19,023	10,441	23,960	18,907
1.19%	1.66%	0.91%	1.76%	1.39%
N/A	N/A	N/A	N/A	N/A
N/A	N/A	N/A	N/A	N/A
1,309,883	1,143,478	1,145,820	1,360,853	1,355,446

NUMBER OF SPLIT CITIES/CSAS, LA CITY NEIGHBORHOOD COUNCILS, COIS

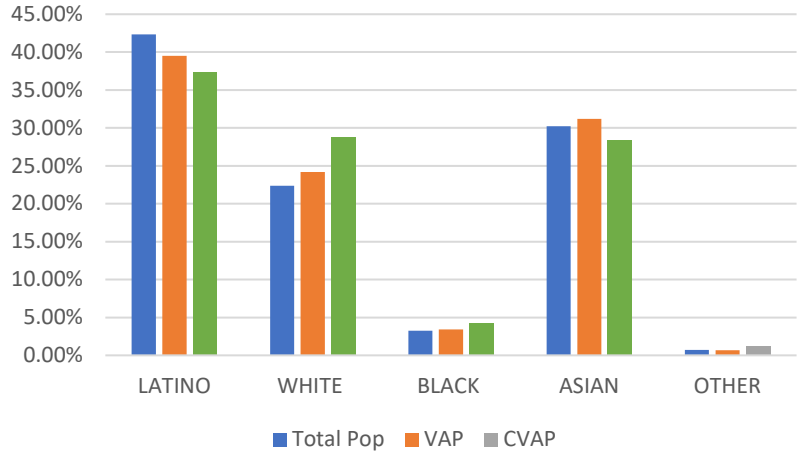
CITIES - CSAS	NEIGHBORHOOD COUNCILS	COI-A	COI-B	COI-C
23	18	16	15	16

District 1 - Plan Name: OP-005



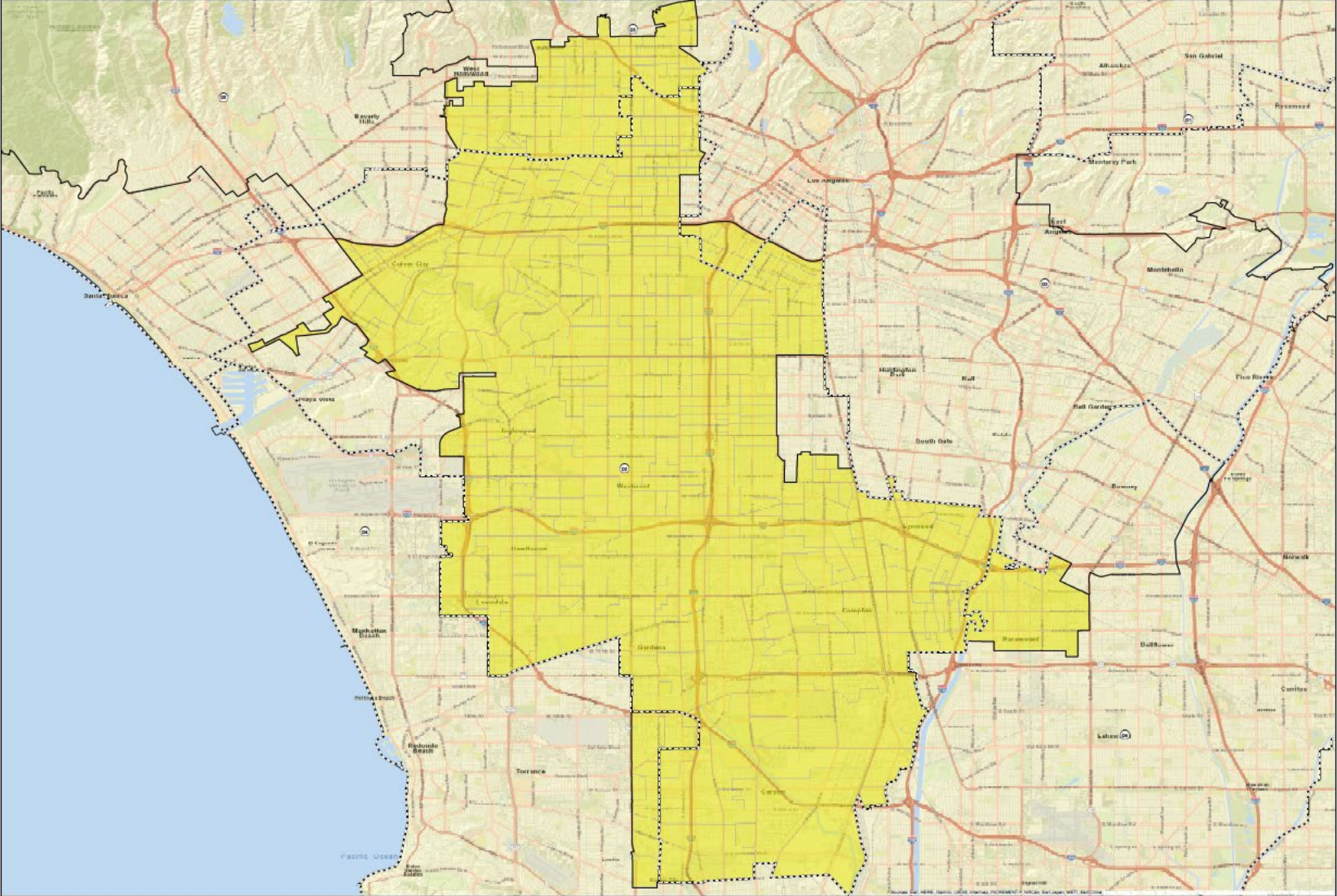
Name	Total Pop	Deviation	Deviation %
1	2,006,722	-2,863	-0.14%

Total Pop, VAP, CVAP



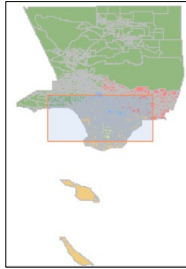
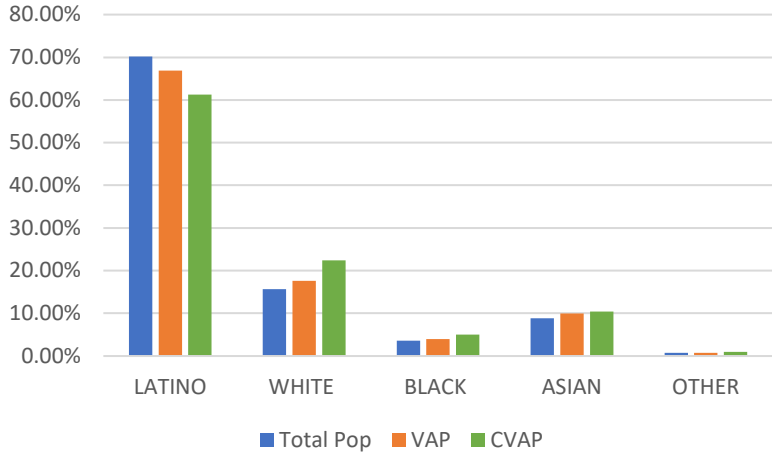
District 1	Total Pop	VAP	CVAP
LATINO	42.31%	39.52%	37.40%
WHITE	22.37%	24.17%	28.84%
BLACK	3.26%	3.41%	4.23%
ASIAN	30.23%	31.18%	28.34%
OTHER	0.72%	0.66%	1.19%

District 2 - Plan Name: OP-005



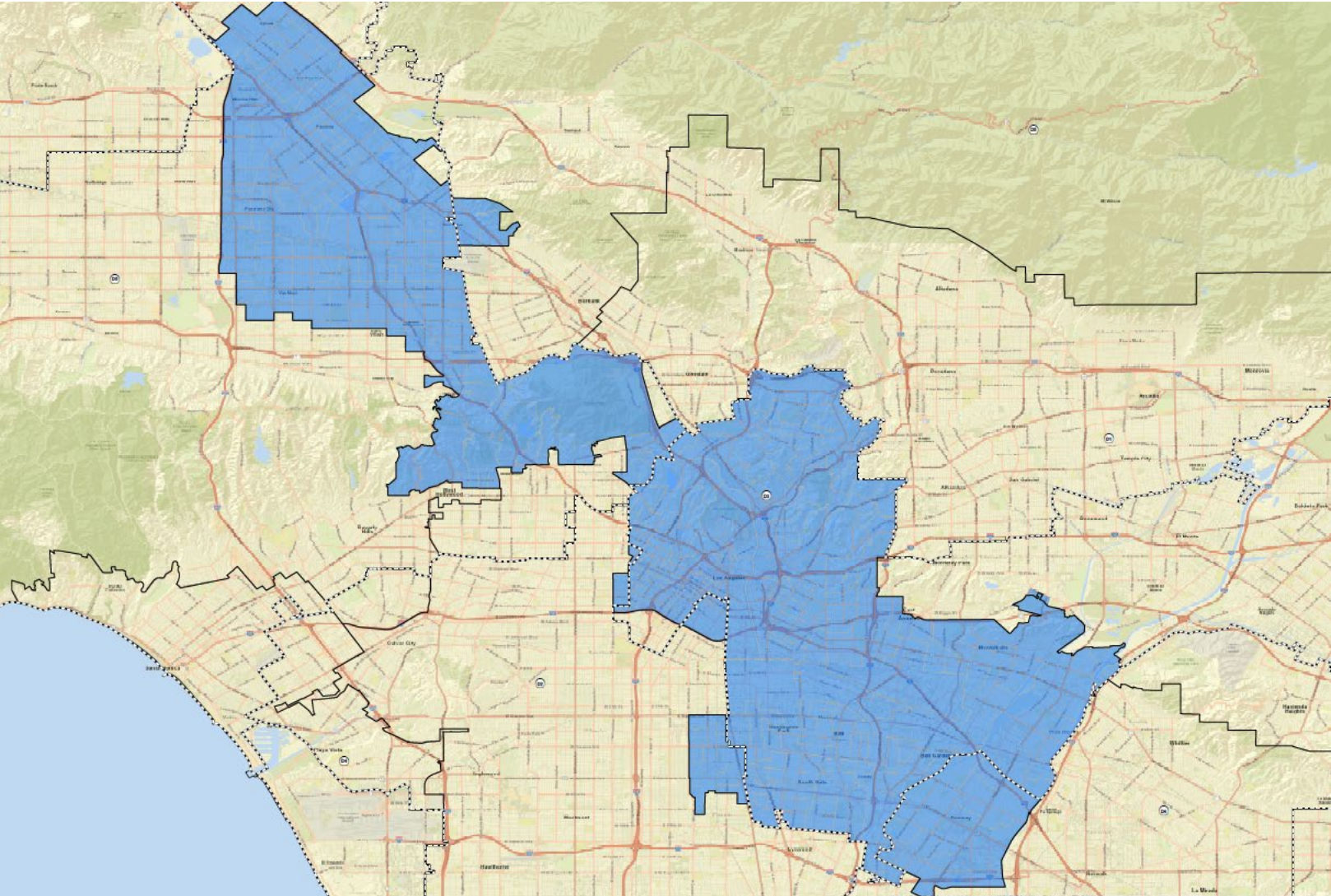
Name	Total Pop	Deviation	Deviation %
2	2,018,522	8,937	0.44%

Total Pop, VAP, CVAP



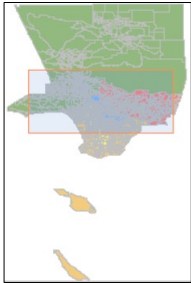
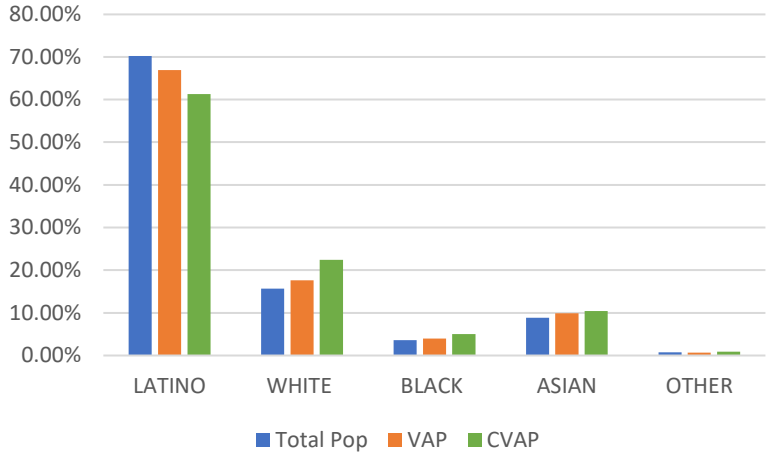
District 2	Total Pop	VAP	CVAP
LATINO	55.04%	51.38%	41.40%
WHITE	11.48%	13.09%	16.28%
BLACK	20.33%	21.18%	29.70%
ASIAN	10.42%	11.66%	10.95%
OTHER	0.92%	0.88%	1.66%

District 3 - Plan Name: OP-005



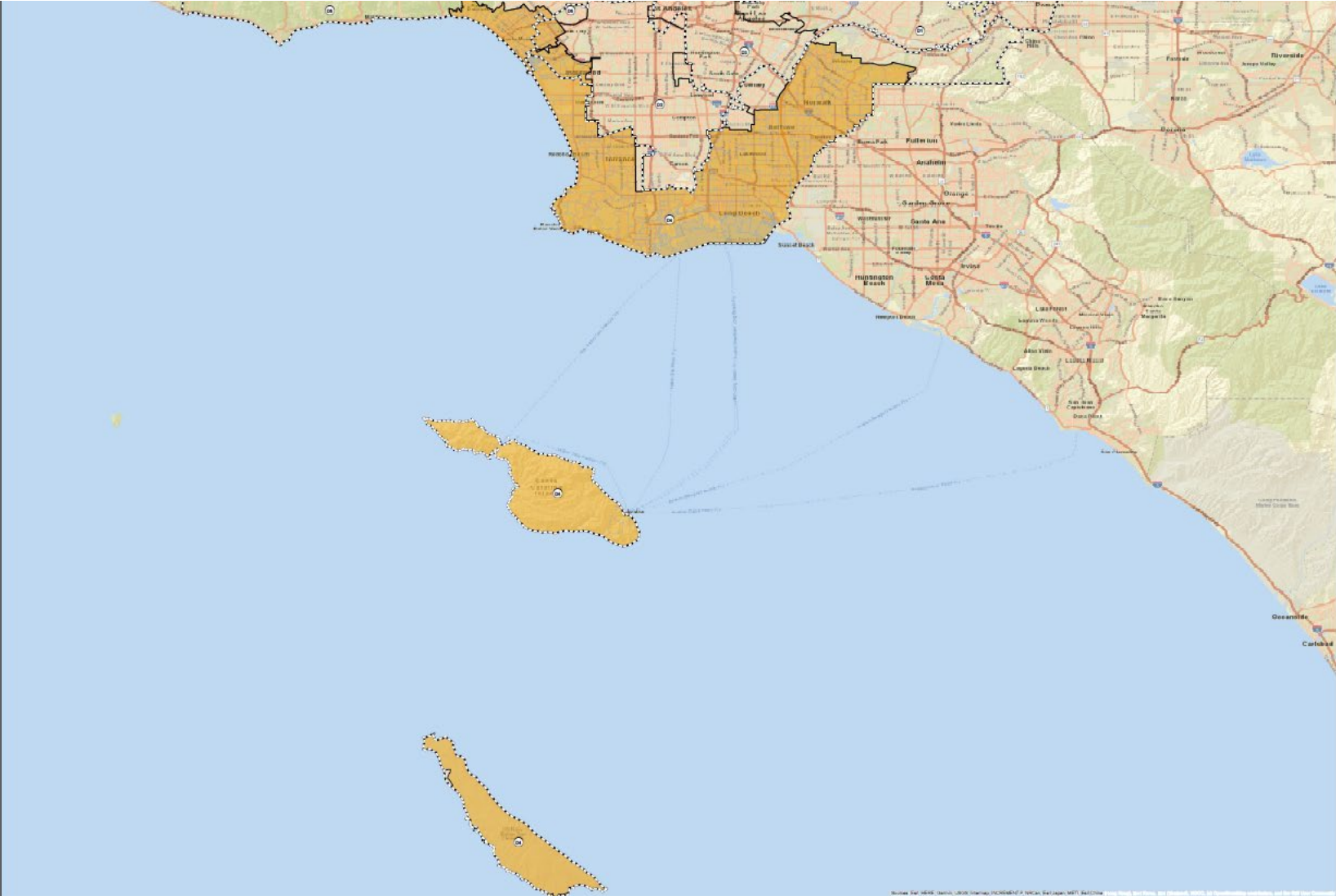
Name	Total Pop	Deviation	Deviation %
3	2,003,232	-6,353	-0.32%

Total Pop, VAP, CVAP



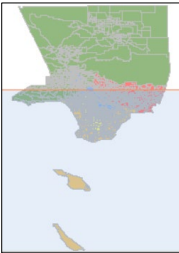
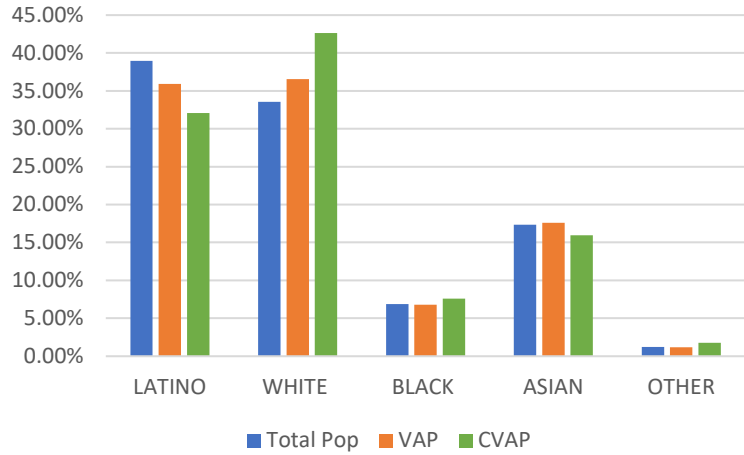
District 3	Total Pop	VAP	CVAP
LATINO	70.20%	66.92%	61.29%
WHITE	15.67%	17.60%	22.41%
BLACK	3.59%	3.94%	5.00%
ASIAN	8.86%	9.91%	10.38%
OTHER	0.74%	0.68%	0.91%

District 4 - Plan Name: OP-005



Name	Total Pop	Deviation	Deviation %
4	2,007,880	-1,705	-0.08%

Total Pop, VAP, CVAP



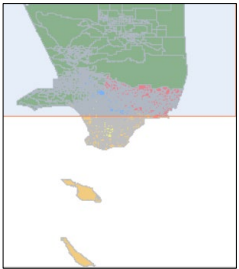
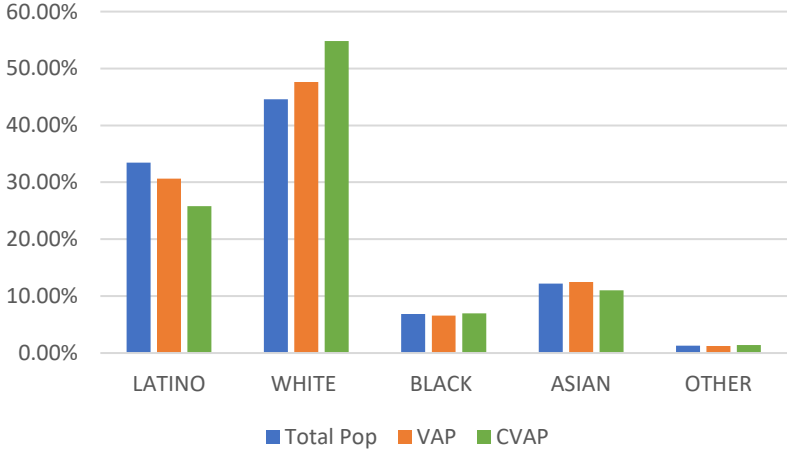
District 4	Total Pop	VAP	CVAP
LATINO	38.95%	35.92%	32.09%
WHITE	33.56%	36.56%	42.61%
BLACK	6.86%	6.78%	7.59%
ASIAN	17.36%	17.61%	15.95%
OTHER	1.22%	1.17%	1.76%

District 5 - Plan Name: OP-005



Name	Total Pop	Deviation	Deviation %
5	2,011,570	1,985	0.10%

Total Pop, VAP, CVAP



District 5	Total Pop	VAP	CVAP
LATINO	33.47%	30.64%	25.79%
WHITE	44.61%	47.61%	54.82%
BLACK	6.82%	6.53%	6.98%
ASIAN	12.19%	12.45%	11.02%
OTHER	1.29%	1.21%	1.39%