



LOS ANGELES COUNTY **REDISTRICTING 2021**

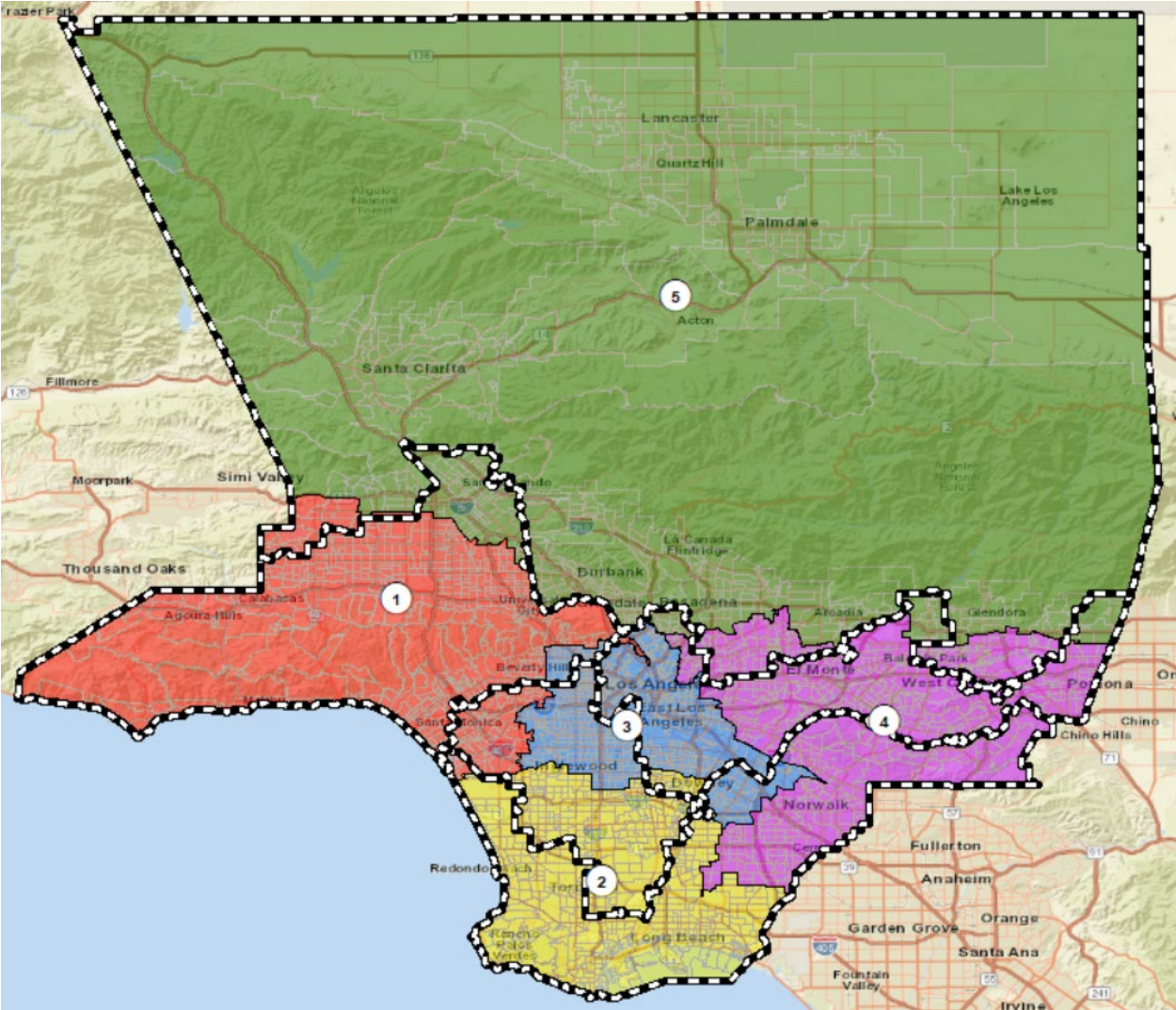
ANALYSIS OF SUBMITTED Plan
Name: OP-003(rkarapetian)

Presentation to the County of LOS ANGELES
CITIZENS REDISTRICTING COMMISSION

ARCBridge Consulting & Training Inc.
www.arcbridge.com



Plan Name: OP-003

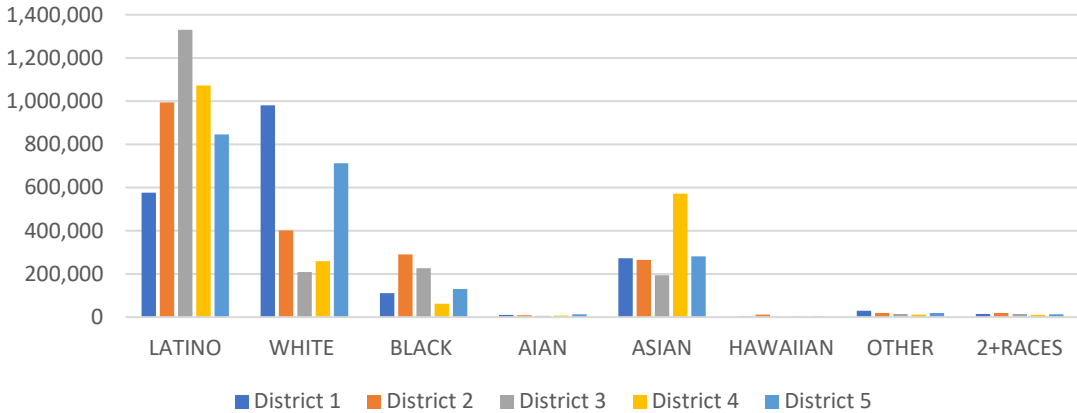


Maximum Deviation – 1.13%

Name	Total Pop	Deviatio	Deviation %
1	2,001,270	-8,315	-0.41%
2	2,016,610	7,025	0.35%
3	2,001,201	-8,384	-0.42%
4	2,004,973	-4,612	-0.23%
5	2,023,872	14,287	0.71%

District	Latino	%	White	%	Black	%	Asian	%
1	576,178	28.79%	981,665	49.05%	112,042	5.60%	273,309	13.66%
2	995,231	49.35%	402,159	19.94%	290,352	14.40%	266,228	13.20%
3	1,330,043	66.46%	208,686	10.43%	227,196	11.35%	194,609	9.72%
4	1,073,436	53.54%	260,194	12.98%	62,907	3.14%	571,827	28.52%
5	846,815	41.84%	713,237	35.24%	130,334	6.44%	282,119	13.94%

Ethnic and Racial Information by District



CENSUS 2020 POPULATION AND CITIZEN VOTING AGE POPULATION

TOTAL POPULATION

Column1	District 1	District 2	District 3	District 4	District 5
LATINO	576,178	995,231	1,330,043	1,073,436	846,815
LATINO %	28.79%	49.35%	66.46%	53.54%	41.84%
WHITE	981,665	402,159	208,686	260,194	713,237
WHITE%	49.05%	19.94%	10.43%	12.98%	35.24%
BLACK	112,042	290,352	227,196	62,907	130,334
BLACK %	5.60%	14.40%	11.35%	3.14%	6.44%
AIAN	10,536	9,776	6,601	8,603	13,743
AIAN %	0.53%	0.48%	0.33%	0.43%	0.68%
ASIAN	273,309	266,228	194,609	571,827	282,119
ASIAN %	13.66%	13.20%	9.72%	28.52%	13.94%
HAWAIIAN	3,310	12,723	2,203	4,374	3,029
HAWAIIAN %	0.17%	0.63%	0.11%	0.22%	0.15%
OTHER	29,467	19,924	16,017	12,785	20,266
OTHER %	1.47%	0.99%	0.80%	0.64%	1.00%
2+RACES	14,763	20,217	15,846	10,847	14,329
2+RACES%	0.74%	1.00%	0.79%	0.54%	0.71%
TOTAL	2,001,270	2,016,610	2,001,201	2,004,973	2,023,872

VOTING AGE POPULATION

District 1	District 2	District 3	District 4	District 5
439,588	723,529	990,615	806,297	619,666
26.44%	46.10%	62.88%	50.53%	38.97%
852,886	349,729	189,015	231,201	605,296
51.30%	22.28%	12.00%	14.49%	38.06%
94,938	231,367	189,355	51,404	99,316
5.71%	14.74%	12.02%	3.22%	6.25%
9,183	8,267	5,583	7,403	11,458
0.55%	0.53%	0.35%	0.46%	0.72%
229,858	217,434	175,072	479,116	227,163
13.82%	13.85%	11.11%	30.02%	14.28%
2,644	9,992	1,759	3,470	2,408
0.16%	0.64%	0.11%	0.22%	0.15%
22,948	14,684	11,725	9,275	15,077
1.38%	0.94%	0.74%	0.58%	0.95%
10,646	14,513	12,269	7,656	9,908
0.64%	0.92%	0.78%	0.48%	0.62%
1,662,691	1,569,515	1,575,393	1,595,822	1,590,292

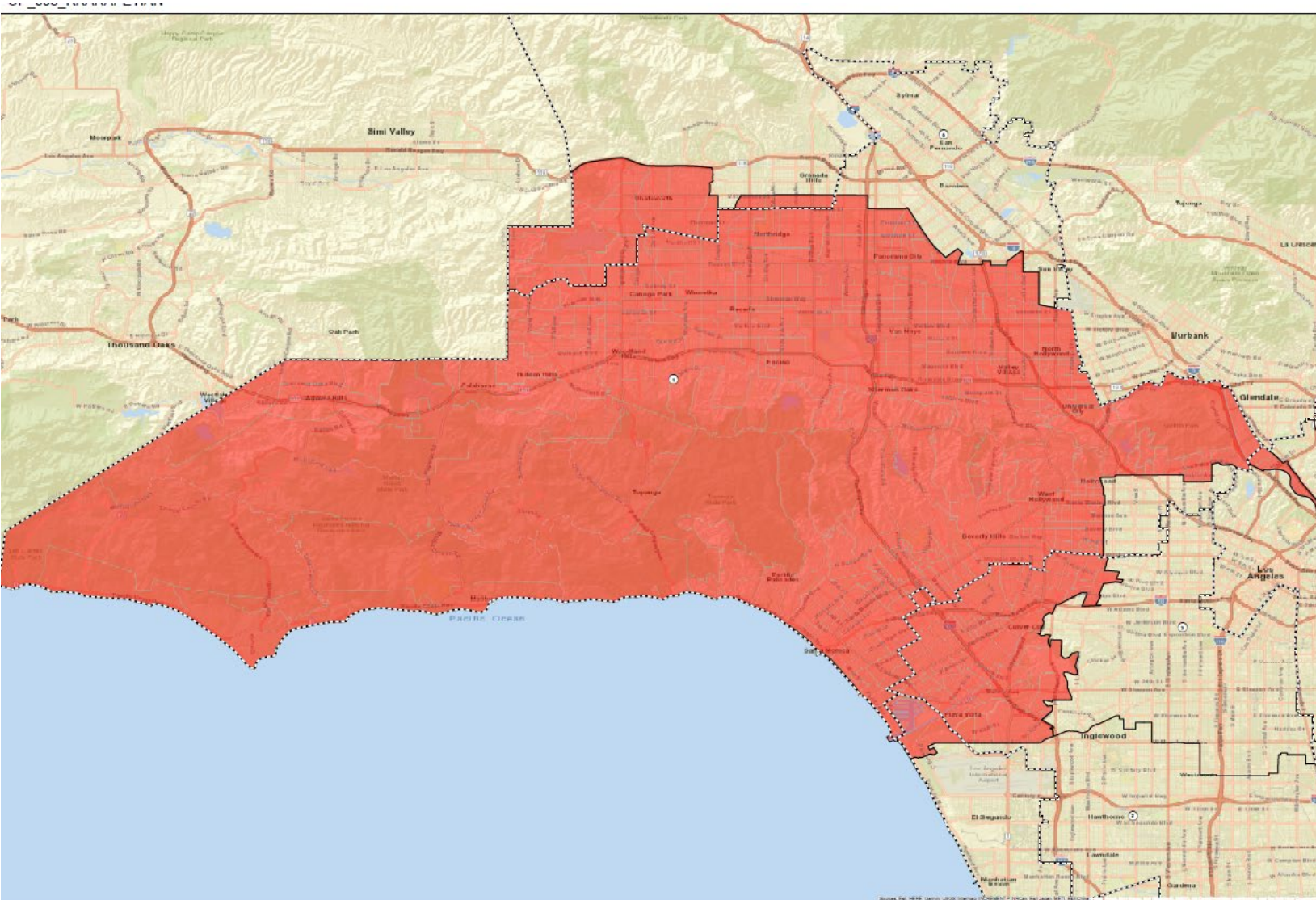
CITIZEN VOTING AGE POPULATION

District 1	District 2	District 3	District 4	District 5
297,039	474,736	600,771	627,161	452,061
21.62%	38.31%	55.05%	48.27%	34.47%
803,001	348,861	168,540	245,962	577,316
58.44%	28.15%	15.44%	18.93%	44.02%
90,312	225,523	190,084	50,060	94,162
6.57%	18.20%	17.42%	3.85%	7.18%
N/A	N/A	N/A	N/A	N/A
N/A	N/A	N/A	N/A	N/A
166,959	165,509	119,343	360,970	168,988
12.15%	13.36%	10.94%	27.78%	12.89%
N/A	N/A	N/A	N/A	N/A
N/A	N/A	N/A	N/A	N/A
16,828	24,538	12,444	15,192	18,951
1.22%	1.98%	1.14%	1.17%	1.45%
N/A	N/A	N/A	N/A	N/A
N/A	N/A	N/A	N/A	N/A
1,374,145	1,239,294	1,091,344	1,299,357	1,311,340

NUMBER OF SPLIT CITIES/CSAS, LA CITY NEIGHBORHOOD COUNCILS, COIS

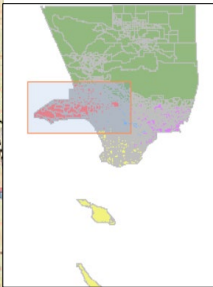
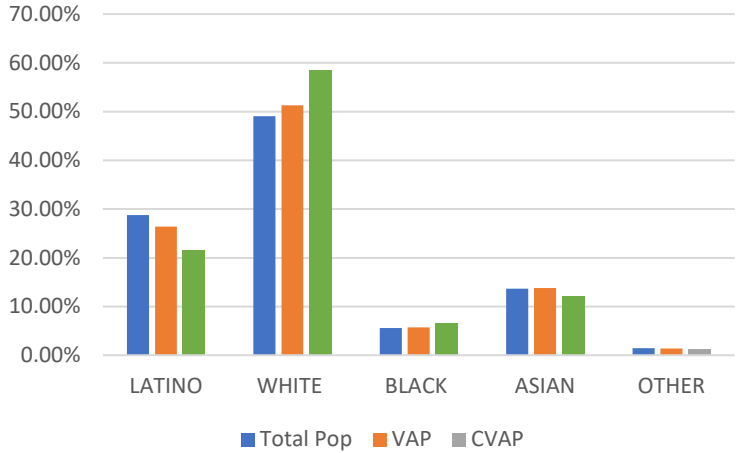
CITIES - CSAS	NEIGHBORHOOD COUNCILS	COI-A	COI-B	COI-C
22	19	14	14	14

District 1 - Plan Name: OP-003



Name	Total Pop	Deviation	Deviation %
1	2,001,270	-8,315	-0.41%

Total Pop, VAP, CVAP



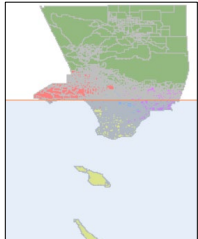
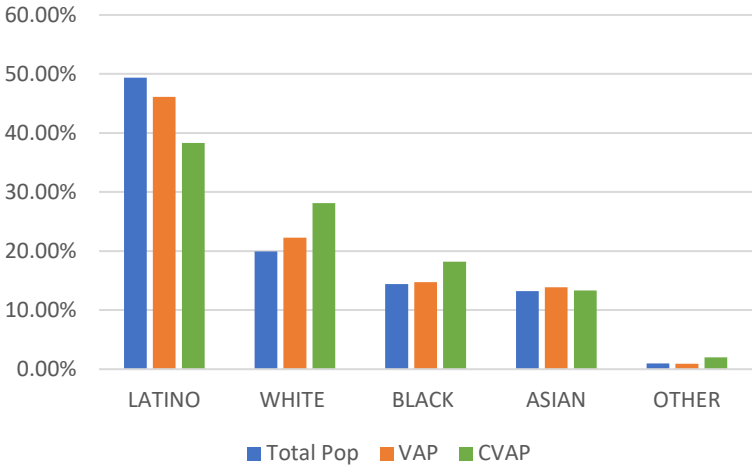
District 1	Total Pop	VAP	CVAP
LATINO	28.79%	26.44%	21.62%
WHITE	49.05%	51.30%	58.44%
BLACK	5.60%	5.71%	6.57%
ASIAN	13.66%	13.82%	12.15%
OTHER	1.47%	1.38%	1.22%

District 2 - Plan Name: OP-003

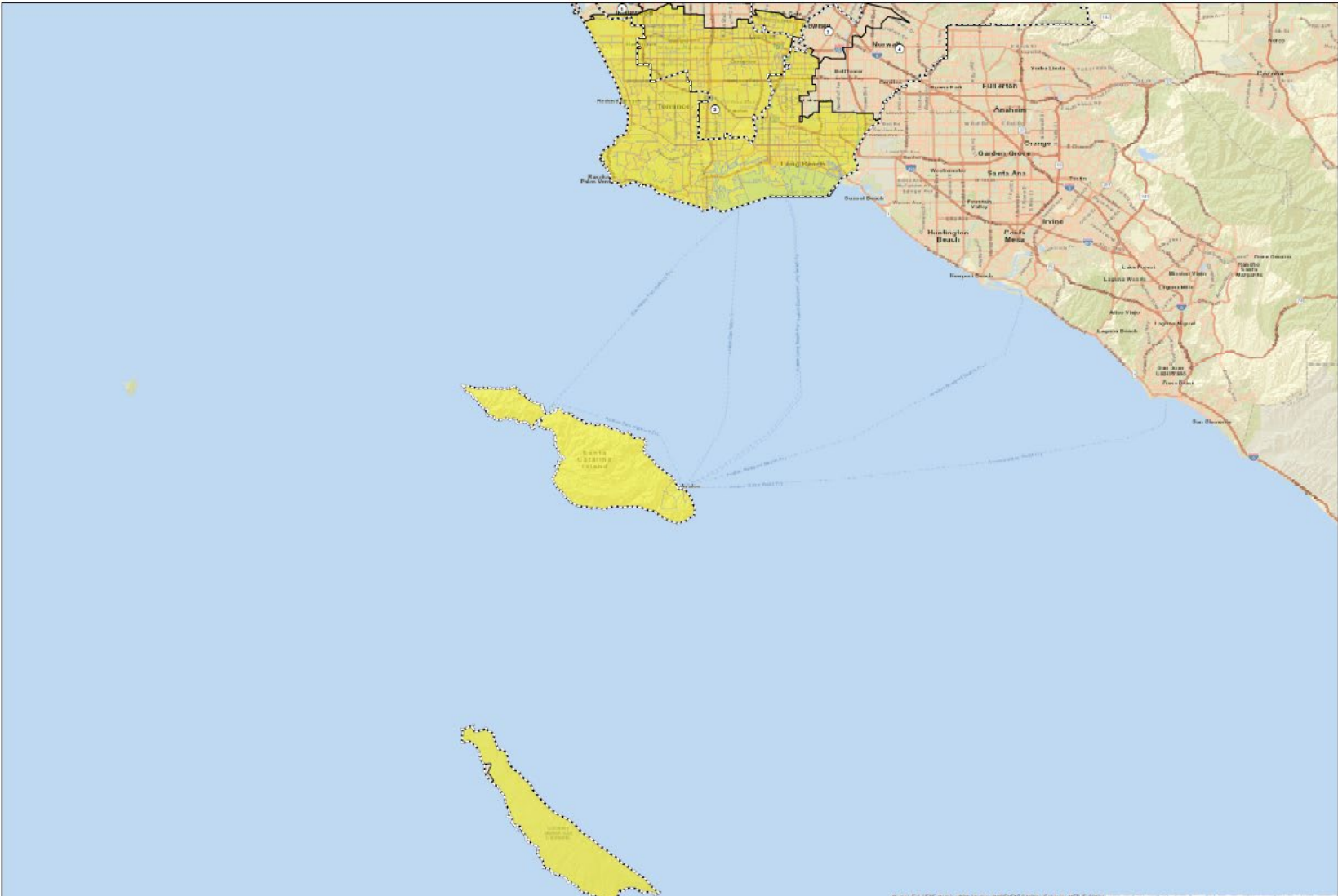


2	2,016,610	7,025	0.35%
---	-----------	-------	-------

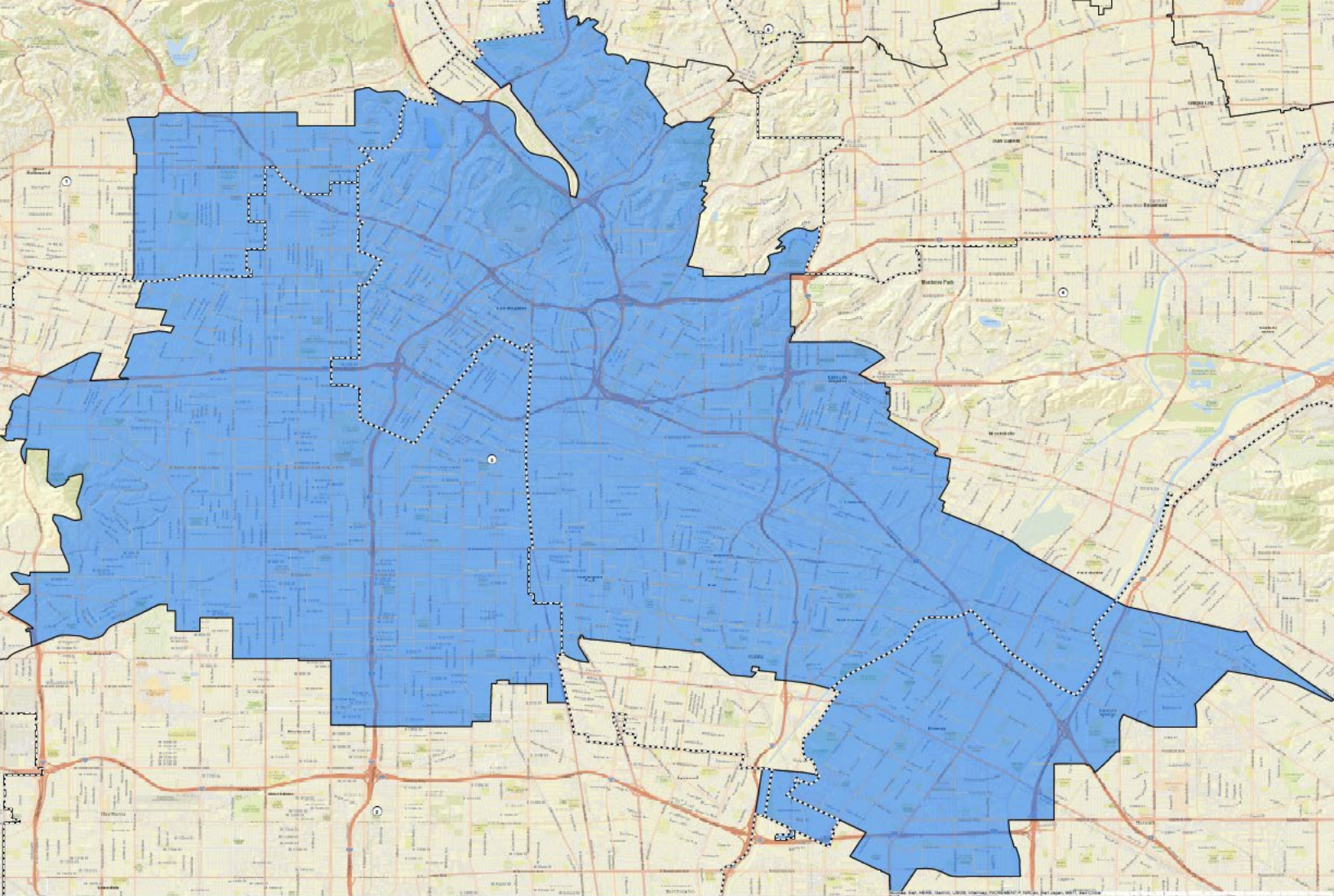
Total Pop, VAP, CVAP



District 2	Total Pop	VAP	CVAP
LATINO	49.35%	46.10%	38.31%
WHITE	19.94%	22.28%	28.15%
BLACK	14.40%	14.74%	18.20%
ASIAN	13.20%	13.85%	13.36%
OTHER	0.99%	0.94%	1.98%

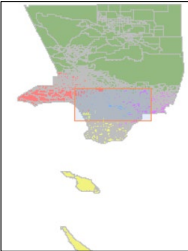
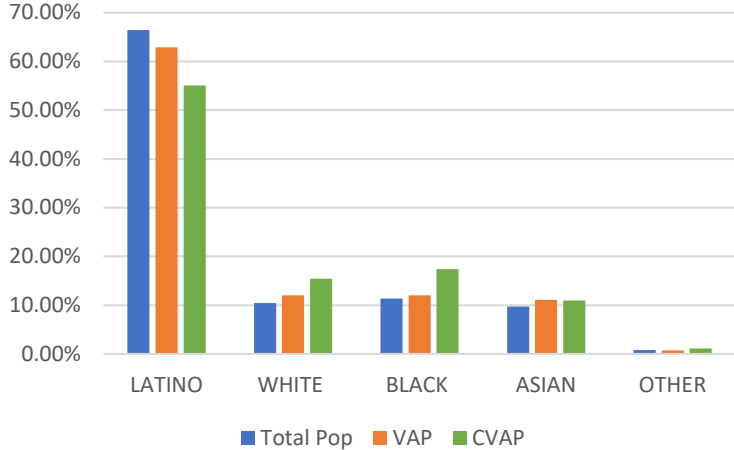


District 3 - Plan Name: OP-003



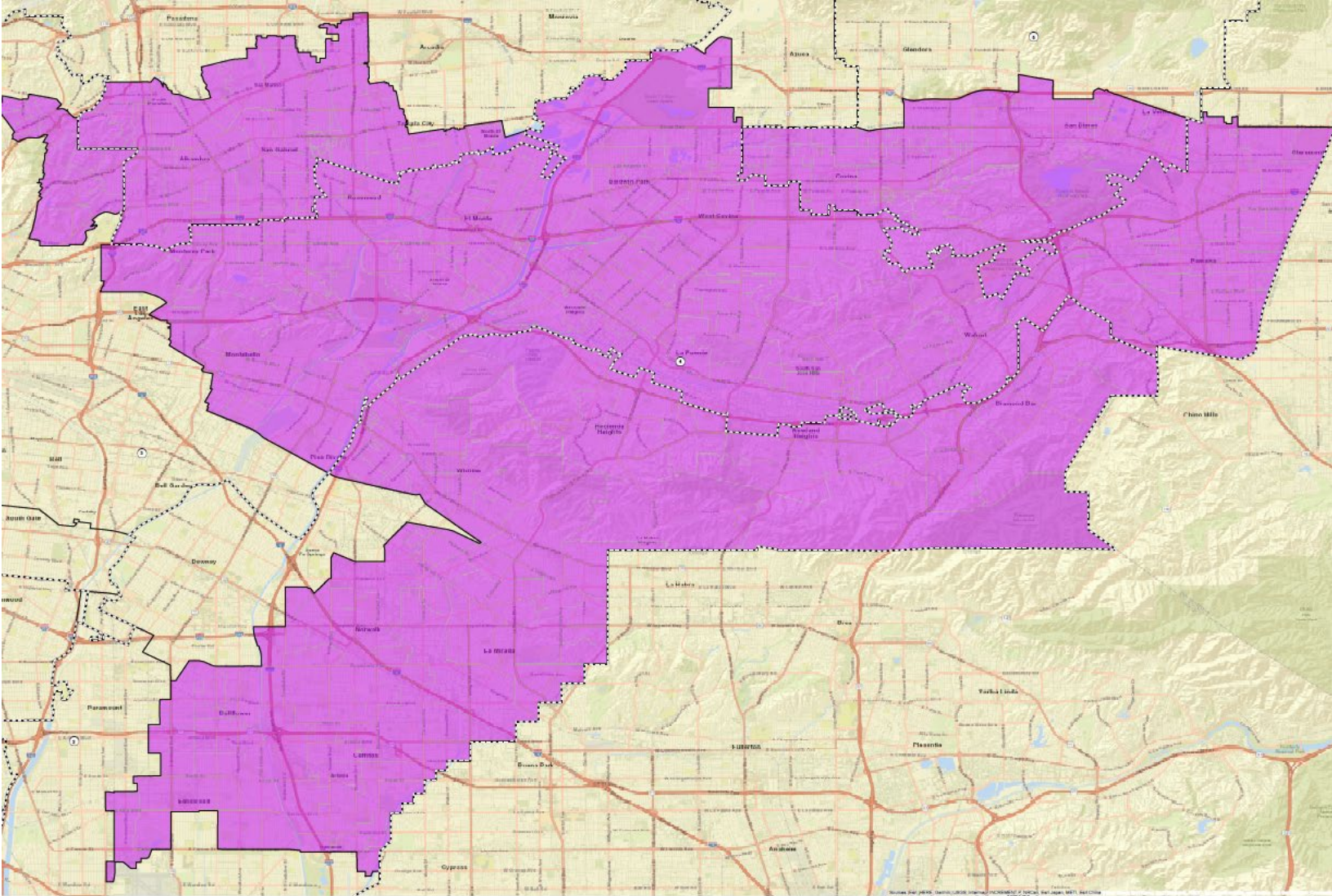
Name	Total Pop	Deviation	Deviation %
3	2,001,201	-8,384	-0.42%

Total Pop, VAP, CVAP



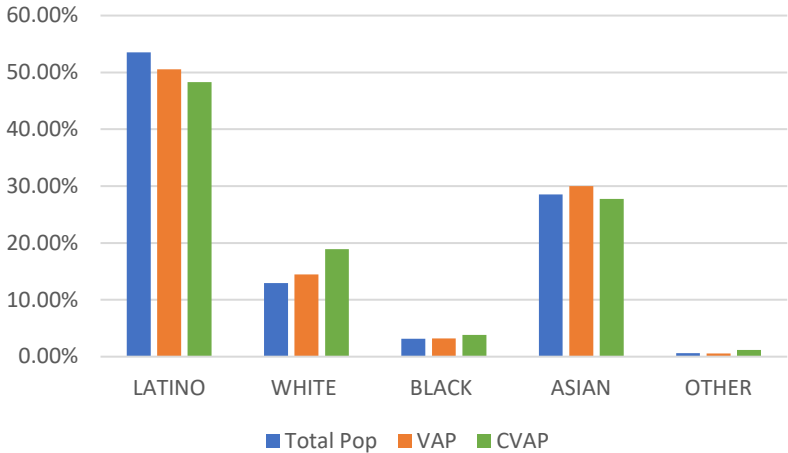
District 3	Total Pop	VAP	CVAP
LATINO	66.46%	62.88%	55.05%
WHITE	10.43%	12.00%	15.44%
BLACK	11.35%	12.02%	17.42%
ASIAN	9.72%	11.11%	10.94%
OTHER	0.80%	0.74%	1.14%

District 4 - Plan Name: OP-003



Name	Total Pop	Deviation	Deviation %
4	2,004,973	-4,612	-0.23%

Total Pop, VAP, CVAP

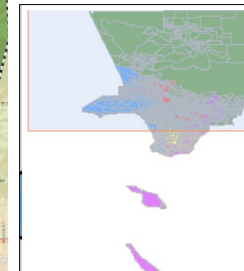
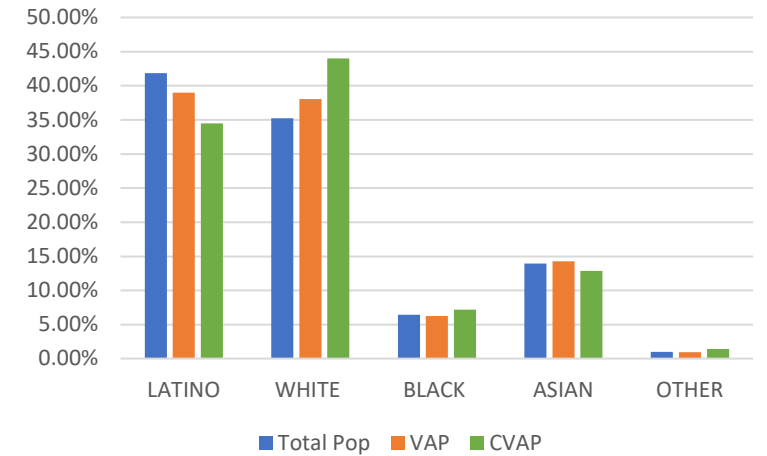


District 4	Total Pop	VAP	CVAP
LATINO	53.54%	50.53%	48.27%
WHITE	12.98%	14.49%	18.93%
BLACK	3.14%	3.22%	3.85%
ASIAN	28.52%	30.02%	27.78%
OTHER	0.64%	0.58%	1.17%

District 5 - Plan Name: OP-003

Name	Total Pop	Deviation	Deviation %
5	2,023,872	14,287	0.71%

Total Pop, VAP, CVAP



District 5	Total Pop	VAP	CVAP
LATINO	41.84%	38.97%	34.47%
WHITE	35.24%	38.06%	44.02%
BLACK	6.44%	6.25%	7.18%
ASIAN	13.94%	14.28%	12.89%
OTHER	1.00%	0.95%	1.45%