



# LOS ANGELES COUNTY **REDISTRICTING 2021**

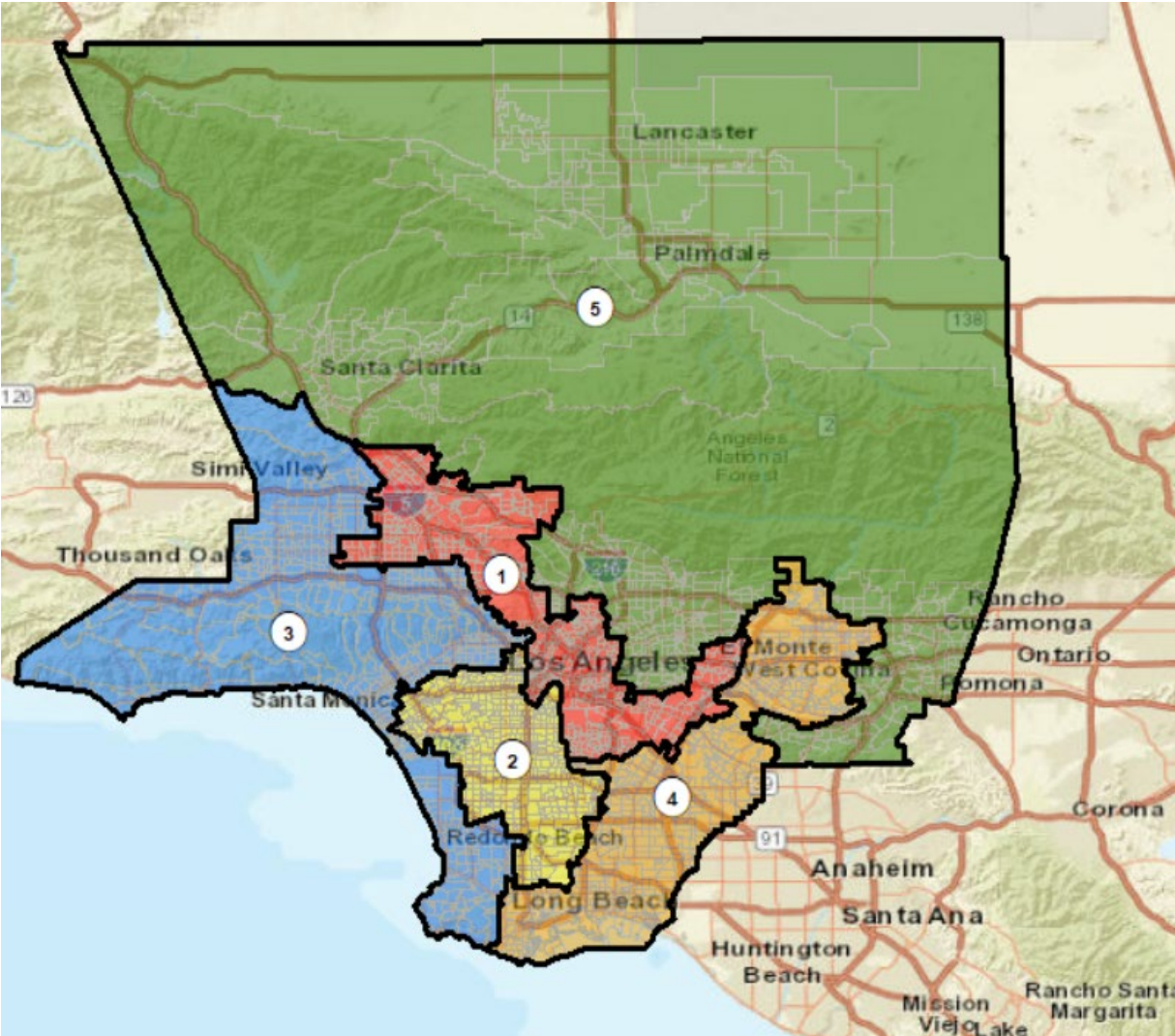
ANALYSIS OF SUBMITTED Plan  
Name: OP-002(A Clayton)

Presentation to the County of LOS ANGELES  
CITIZENS REDISTRICTING COMMISSION

ARCBridge Consulting & Training Inc.  
[www.arcbridge.com](http://www.arcbridge.com)



# Plan Name: OP-002

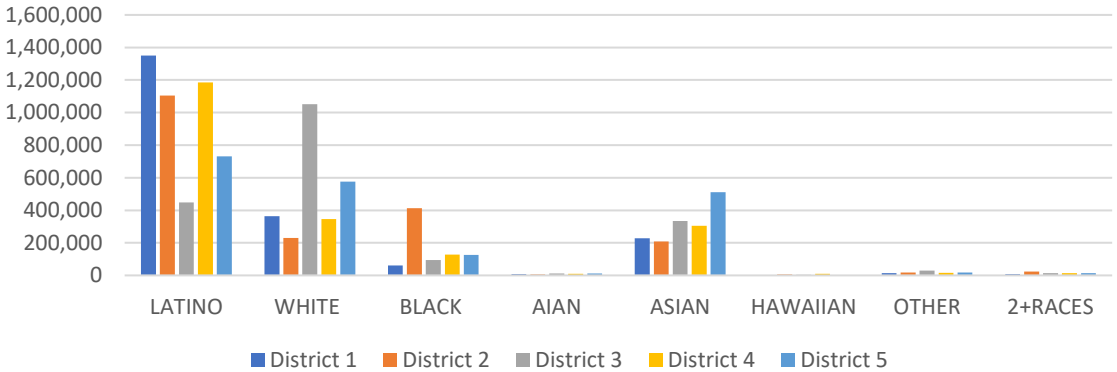


### Maximum Deviation – 2.17

Name	Total Pop	Deviatio	Deviation %
1	2,035,424	25,839	1.29%
2	2,010,476	891	0.04%
3	1,991,792	-17,793	-0.89%
4	2,015,935	6,350	0.32%
5	1,994,299	-15,286	-0.76%

District	Latino	%	White	%	Black	%	Asian	%
1	1,350,021	66.33%	363,008	17.83%	60,948	2.99%	228,428	11.22%
2	1,105,082	54.97%	229,402	11.41%	412,307	20.51%	208,875	10.39%
3	448,725	22.53%	1,051,925	52.81%	94,004	4.72%	335,263	16.83%
4	1,185,868	58.82%	345,464	17.14%	128,369	6.37%	305,172	15.14%
5	732,007	36.70%	576,142	28.89%	127,203	6.38%	510,354	25.59%

### Ethnic and Racial Information by District



# CENSUS 2020 POPULATION AND CITIZEN VOTING AGE POPULATION

TOTAL POPULATION

Column1	District 1	District 2	District 3	District 4	District 5
LATINO	1,350,021	1,105,082	448,725	1,185,868	732,007
LATINO %	66.33%	54.97%	22.53%	58.82%	36.70%
WHITE	363,008	229,402	1,051,925	345,464	576,142
WHITE%	17.83%	11.41%	52.81%	17.14%	28.89%
BLACK	60,948	412,307	94,004	128,369	127,203
BLACK %	2.99%	20.51%	4.72%	6.37%	6.38%
AIAN	7,659	6,231	11,837	11,020	12,512
AIAN %	0.38%	0.31%	0.59%	0.55%	0.63%
ASIAN	228,428	208,875	335,263	305,172	510,354
ASIAN %	11.22%	10.39%	16.83%	15.14%	25.59%
HAWAIIAN	2,041	6,606	4,264	9,692	3,036
HAWAIIAN %	0.10%	0.33%	0.21%	0.48%	0.15%
OTHER	14,595	18,807	30,776	16,075	18,206
OTHER %	0.72%	0.94%	1.55%	0.80%	0.91%
2+RACES	8,724	23,166	14,998	14,275	14,839
2+RACES%	0.43%	1.15%	0.75%	0.71%	0.74%
TOTAL	2,035,424	2,010,476	1,991,792	2,015,935	1,994,299

VOTING AGE POPULATION

District 1	District 2	District 3	District 4	District 5
1,014,653	805,114	345,445	882,263	532,220
63.15%	51.36%	20.83%	55.63%	33.79%
316,174	200,935	912,475	307,322	491,221
19.68%	12.82%	55.02%	19.38%	31.19%
52,196	336,599	78,732	101,956	96,897
3.25%	21.47%	4.75%	6.43%	6.15%
6,485	5,144	10,261	9,570	10,434
0.40%	0.33%	0.62%	0.60%	0.66%
198,940	182,977	273,489	255,226	418,011
12.38%	11.67%	16.49%	16.09%	26.54%
1,586	5,248	3,412	7,640	2,387
0.10%	0.33%	0.21%	0.48%	0.15%
10,535	13,901	23,881	11,995	13,397
0.66%	0.89%	1.44%	0.76%	0.85%
6,173	17,822	10,674	9,927	10,396
0.38%	1.14%	0.64%	0.63%	0.66%
1,606,742	1,567,740	1,658,369	1,585,899	1,574,963

CITIZEN VOTING AGE POPULATION

District 1	District 2	District 3	District 4	District 5
676,755	466,191	249,176	664,375	395,271
57.68%	41.26%	17.66%	50.96%	30.46%
285,699	179,255	869,718	326,607	482,401
24.35%	15.86%	61.65%	25.05%	37.17%
48,060	341,651	71,649	98,022	90,759
4.10%	30.24%	5.08%	7.52%	6.99%
N/A	N/A	N/A	N/A	N/A
N/A	N/A	N/A	N/A	N/A
150,936	123,658	201,519	194,885	310,771
12.86%	10.94%	14.28%	14.95%	23.95%
N/A	N/A	N/A	N/A	N/A
N/A	N/A	N/A	N/A	N/A
11,746	18,935	18,749	19,869	18,654
1.00%	1.68%	1.33%	1.52%	1.44%
N/A	N/A	N/A	N/A	N/A
N/A	N/A	N/A	N/A	N/A
1,173,255	1,129,879	1,410,808	1,303,754	1,297,784

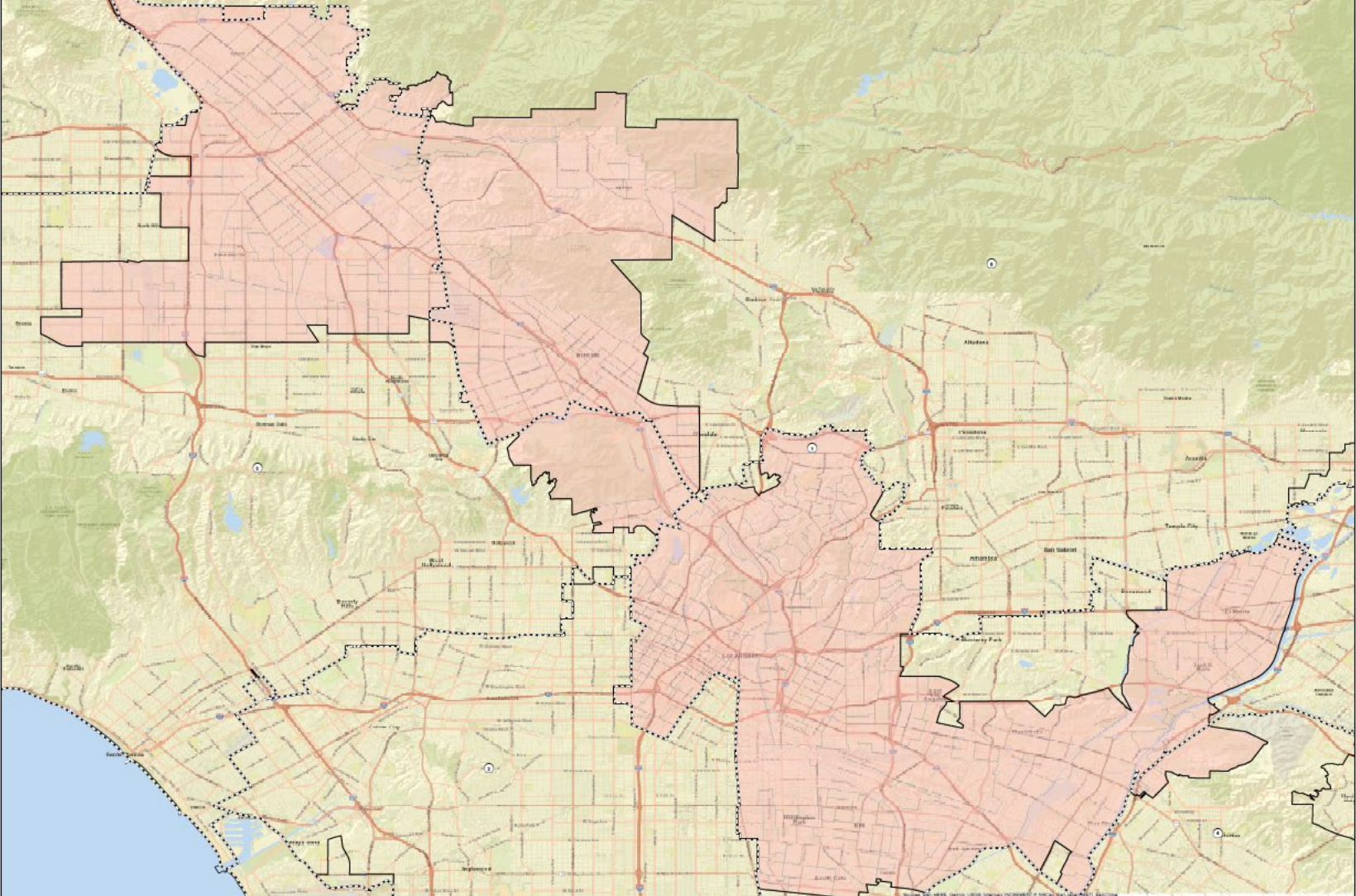
## NUMBER OF SPLIT CITIES/CSAS, LA CITY NEIGHBORHOOD COUNCILS, COIS

CITIES - CSAS	NEIGHBORHOOD COUNCILS	COI-A	COI-B	COI-C
41	30	17	16	19

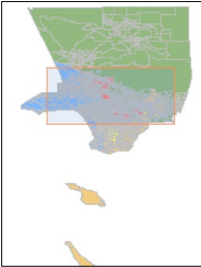
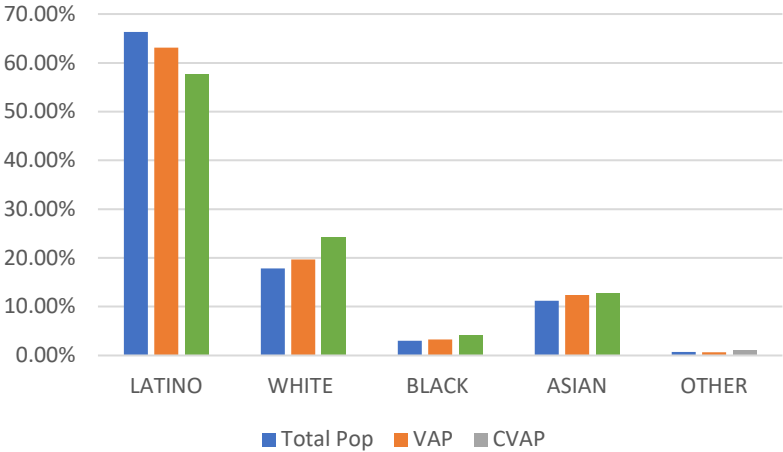
# District 1 - Plan Name: OP-002



Name	Total Pop	Deviation	Deviation %
1	2,035,424	25,839	1.29%

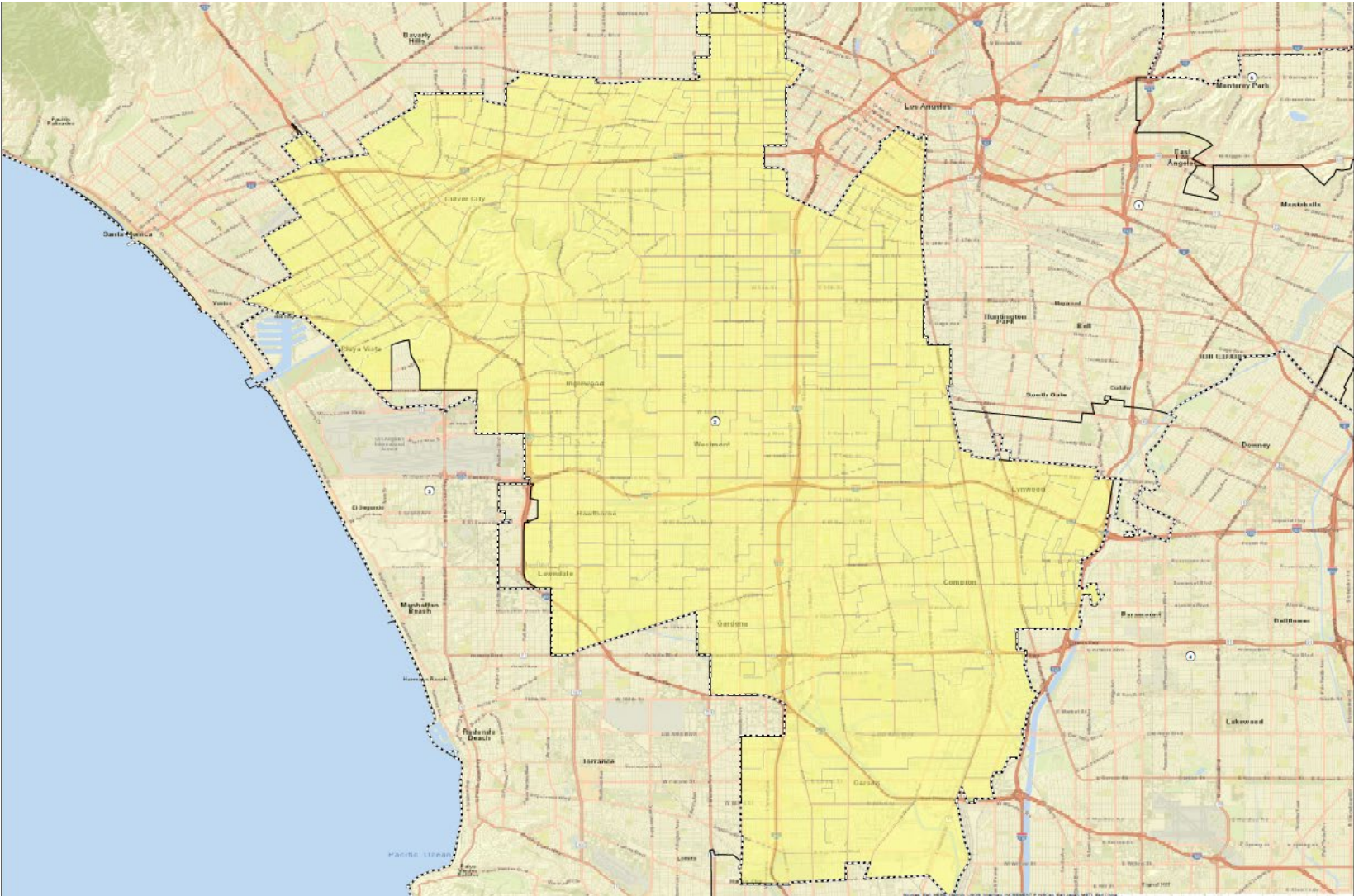


Total, VAP, CVAP



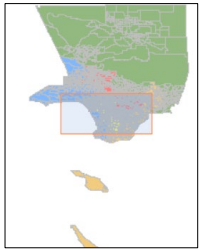
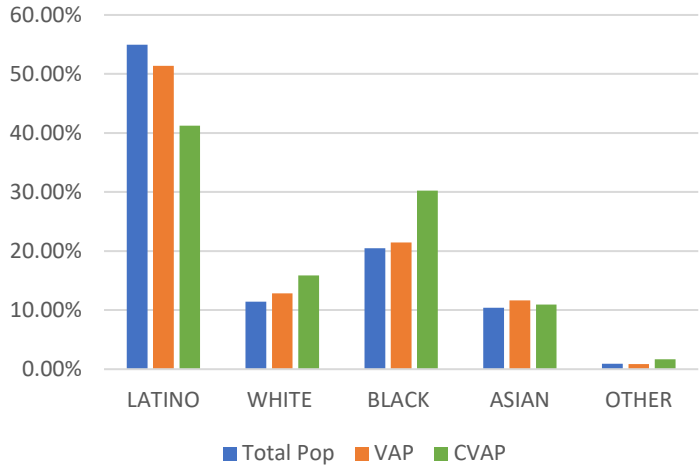
District 1	Total Pop	VAP	CVAP
LATINO	66.33%	63.15%	57.68%
WHITE	17.83%	19.68%	24.35%
BLACK	2.99%	3.25%	4.10%
ASIAN	11.22%	12.38%	12.86%
OTHER	0.72%	0.66%	1.00%

# District 2 - Plan Name: OP-002



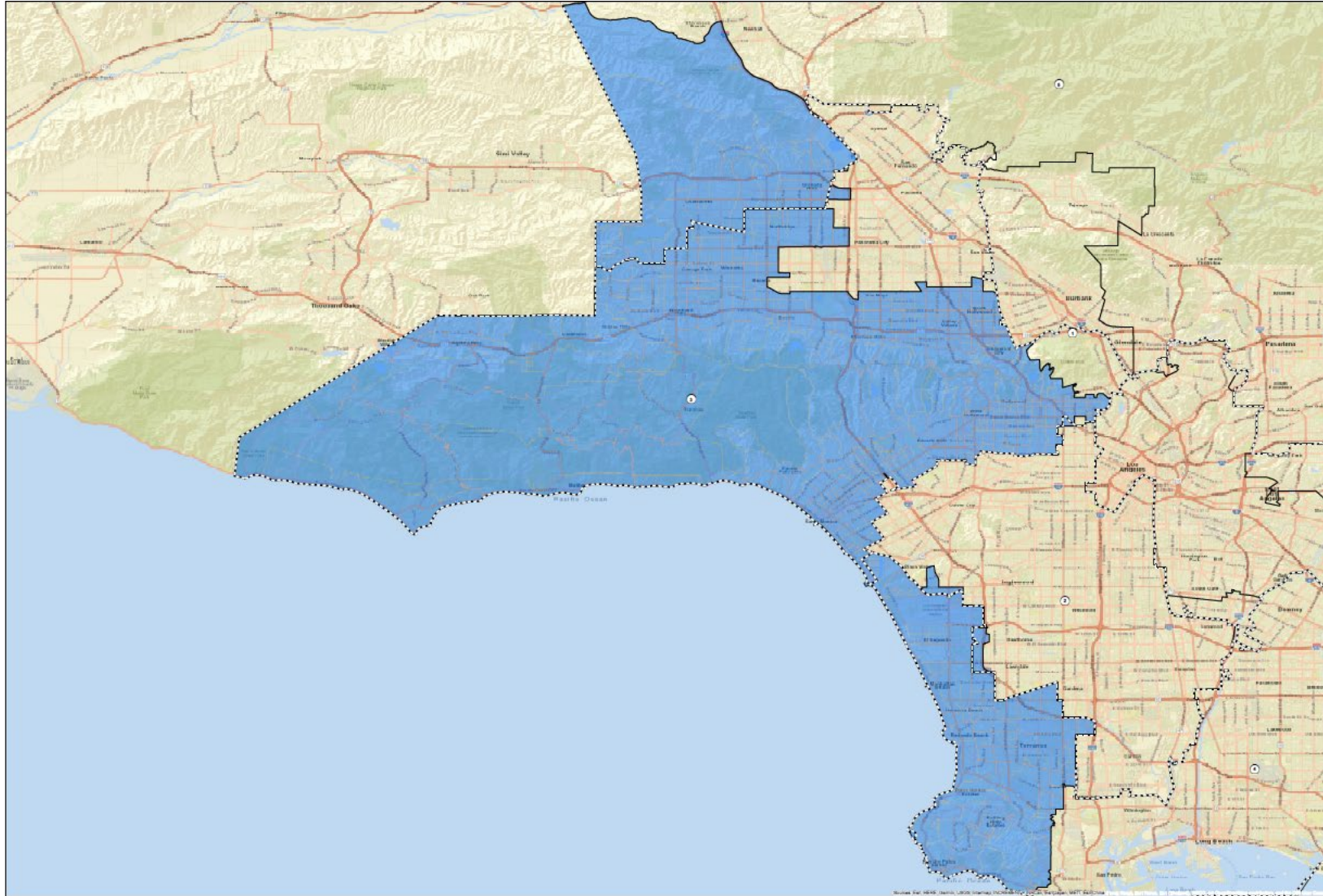
Name	Total Pop	Deviation	Deviation %
2	2,010,476	891	0.04%

Total Pop, VAP, CVAP



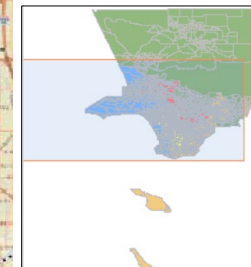
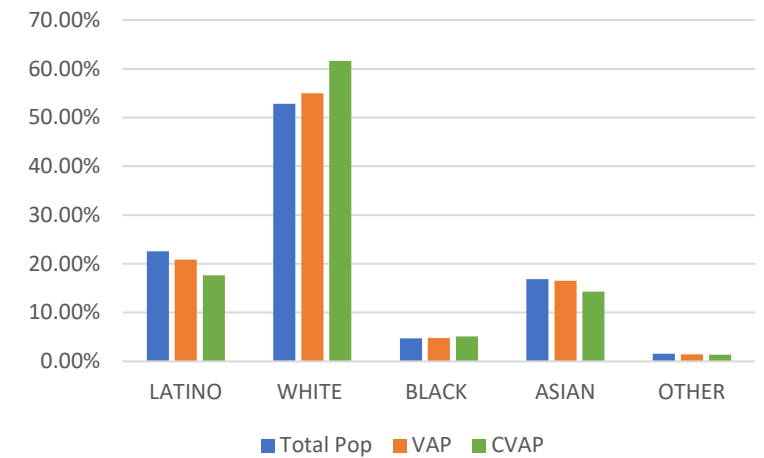
District 2	Total Pop	VAP	CVAP
LATINO	54.97%	51.36%	41.26%
WHITE	11.41%	12.82%	15.86%
BLACK	20.51%	21.47%	30.24%
ASIAN	10.39%	11.67%	10.94%
OTHER	0.94%	0.89%	1.68%

# District 3 - Plan Name: OP-002



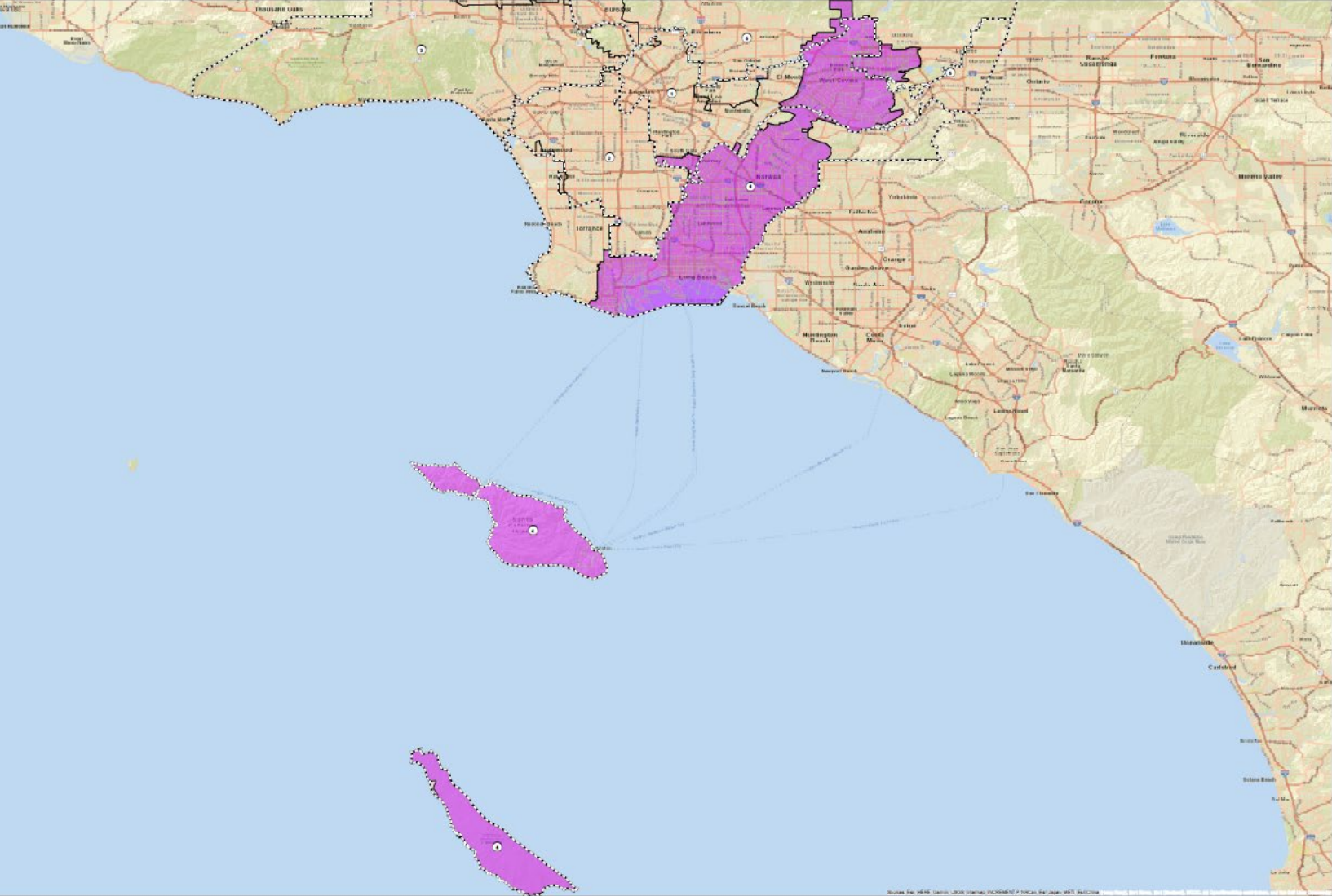
Name	Total Pop	Deviation	Deviation %
3	1,991,792	-17,793	-0.89%

Total Pop, VAP, CVAP



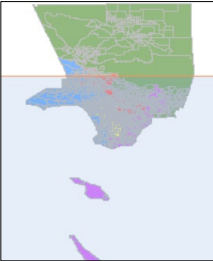
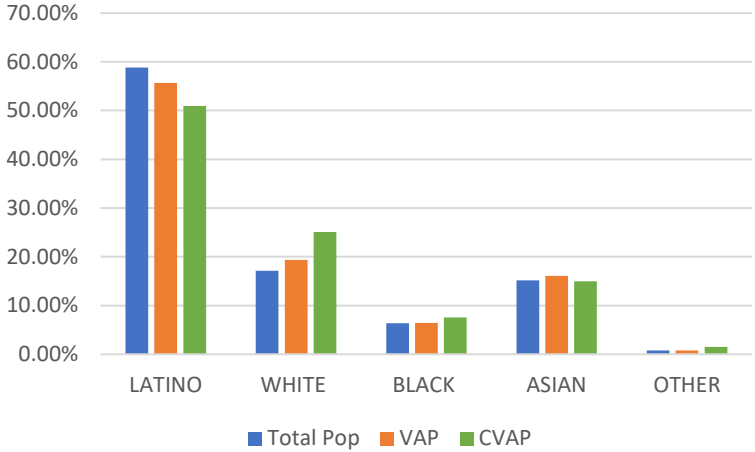
District 3	Total Pop	VAP	CVAP
LATINO	22.53%	20.83%	17.66%
WHITE	52.81%	55.02%	61.65%
BLACK	4.72%	4.75%	5.08%
ASIAN	16.83%	16.49%	14.28%
OTHER	1.55%	1.44%	1.33%

# District 4 - Plan Name: OP-002



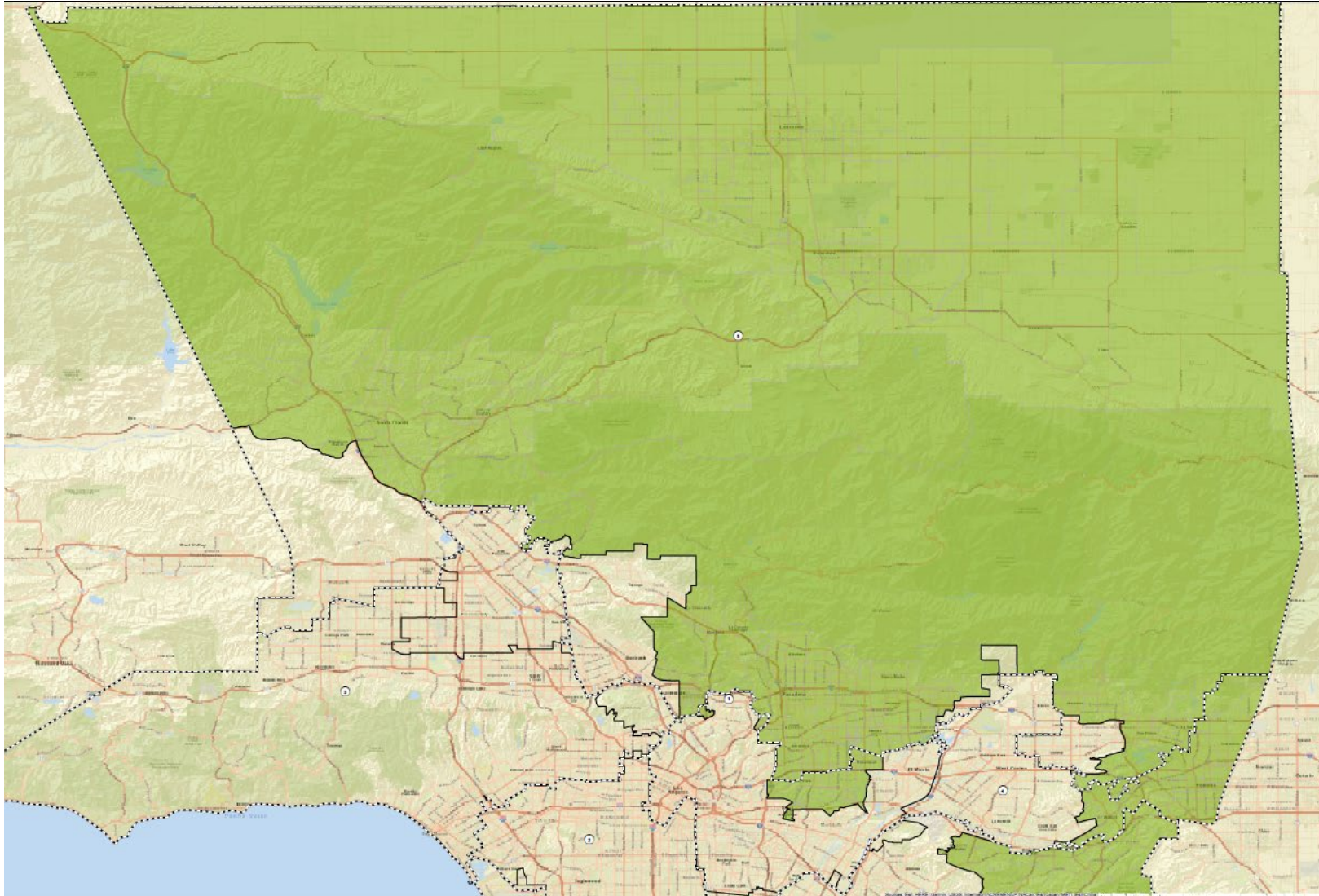
Name	Total Pop	Deviation	Deviation %
4	2,015,935	6,350	0.32%

Total Pop, VAP, CVAP



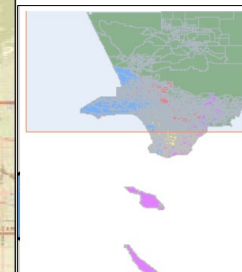
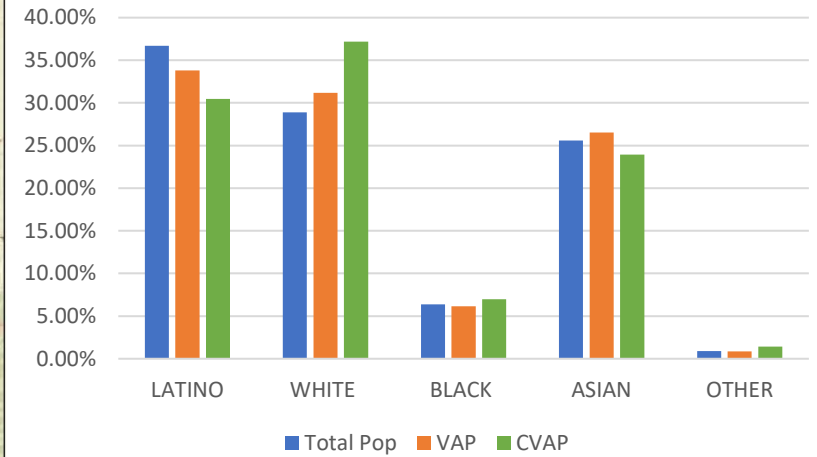
District 4	Total Pop	VAP	CVAP
LATINO	58.82%	55.63%	50.96%
WHITE	17.14%	19.38%	25.05%
BLACK	6.37%	6.43%	7.52%
ASIAN	15.14%	16.09%	14.95%
OTHER	0.80%	0.76%	1.52%

# District 5 - Plan Name: OP-002



Name	Total Pop	Deviation	Deviation %
5	1,994,299	-15,286	-0.76%

Total Pop, VAP, CVAP



District 5	Total Pop	VAP	CVAP
LATINO	36.70%	33.79%	30.46%
WHITE	28.89%	31.19%	37.17%
BLACK	6.38%	6.15%	6.99%
ASIAN	25.59%	26.54%	23.95%
OTHER	0.91%	0.85%	1.44%