



# LOS ANGELES COUNTY **REDISTRICTING 2021**

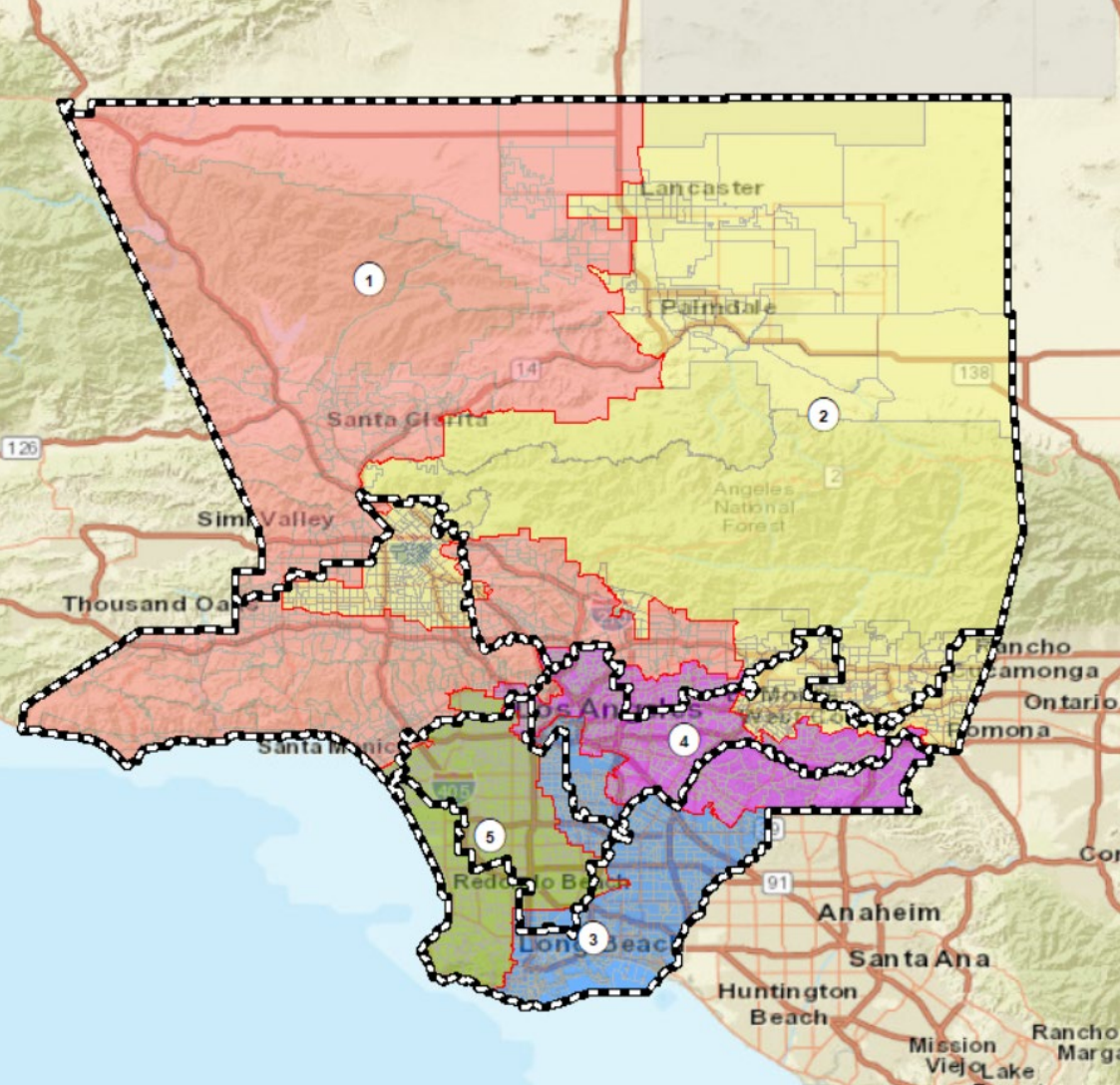
ANALYSIS OF SUBMITTED Plan  
Name: OP-001(eupdates2010)

Presentation to the County of LOS ANGELES  
CITIZENS REDISTRICTING COMMISSION

ARCBridge Consulting & Training Inc.  
[www.arcbridge.com](http://www.arcbridge.com)



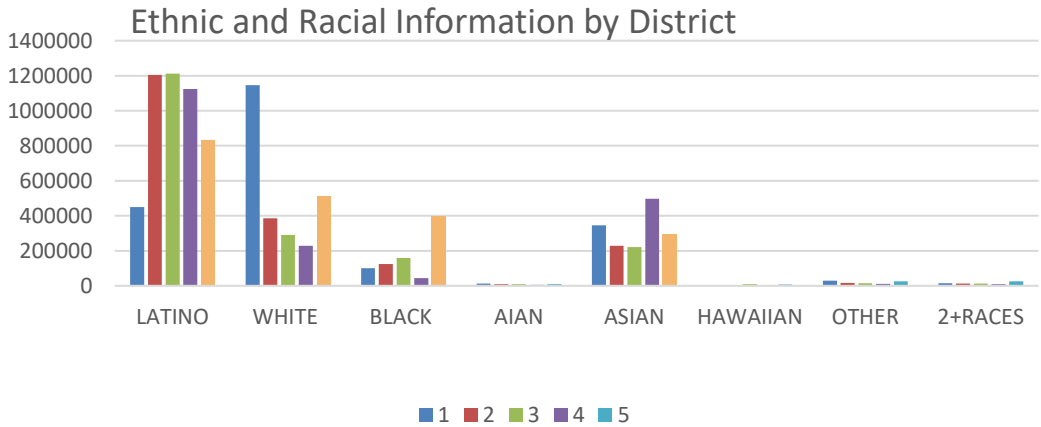
# Plan Name: OP-001(eupdates2010)



## Maximum Deviation – 8.92

Name	Total Pop	Deviation	Deviation %
1	2,104,611	95,026	4.73%
2	1,986,132	-23,453	-1.17%
3	1,932,614	-76,971	-3.83%
4	1,925,319	-84,266	-4.19%
5	2,099,250	89,665	4.46%

District	Latino	%	White	%	Black	%	Asian	%
1	450,304	21.40%	1,145,450	54.43%	101,186	4.81%	346,435	16.46%
2	1,205,317	60.69%	385,127	19.39%	123,845	6.24%	229,597	11.56%
3	1,211,874	62.71%	291,763	15.10%	160,074	8.28%	221,413	11.46%
4	1,124,888	58.43%	229,567	11.92%	43,463	2.26%	498,164	25.87%
5	829,320	39.51%	514,034	24.49%	394,263	18.78%	292,483	13.93%



# CENSUS 2020 POPULATION AND CITIZEN VOTING AGE POPULATION

TOTAL POPULATION

Race Info	District 1	District 2	District 3	District 4	District 5
LATINO	450,304	1,205,317	1,211,874	1,124,888	829,320
LATINO %	21.40%	60.69%	62.71%	58.43%	39.51%
WHITE	1,145,450	385,127	291,763	229,567	514,034
WHITE%	54.43%	19.39%	15.10%	11.92%	24.49%
BLACK	101,186	123,845	160,074	43,463	394,263
BLACK %	4.81%	6.24%	8.28%	2.26%	18.78%
AIAN	13,908	10,316	9,559	6,318	9,158
AIAN %	0.66%	0.52%	0.49%	0.33%	0.44%
ASIAN	346,435	229,597	221,413	498,164	292,483
ASIAN %	16.46%	11.56%	11.46%	25.87%	13.93%
HAWAIIAN	3,407	2,829	9,146	1,947	8,310
HAWAIIAN %	0.16%	0.14%	0.47%	0.10%	0.40%
OTHER	28,980	16,484	14,981	12,082	25,932
OTHER %	1.38%	0.83%	0.78%	0.63%	1.24%
2+RACES	14,941	12,617	13,804	8,890	25,750
2+RACES%	0.71%	0.64%	0.71%	0.46%	1.23%
TOTAL	2,104,611	1,986,132	1,932,614	1,925,319	2,099,250

VOTING AGE POPULATION

District 1	District 2	District 3	District 4	District 5
341,935	884,851	888,383	854,241	610,285
19.72%	57.50%	59.20%	55.34%	36.40%
980,990	333,744	260,267	205,747	447,379
56.57%	21.69%	17.34%	13.33%	26.68%
82,704	95,855	128,405	37,467	321,949
4.77%	6.23%	8.56%	2.43%	19.20%
11,828	8,693	8,330	5,268	7,775
0.68%	0.56%	0.56%	0.34%	0.46%
280,837	192,632	187,344	424,174	243,656
16.20%	12.52%	12.48%	27.48%	14.53%
2,693	2,287	7,217	1,541	6,535
0.16%	0.15%	0.48%	0.10%	0.39%
22,505	11,778	10,955	8,677	19,794
1.30%	0.77%	0.73%	0.56%	1.18%
10,532	8,957	9,670	6,391	19,442
0.61%	0.58%	0.64%	0.41%	1.16%
1,734,024	1,538,797	1,500,571	1,543,506	1,676,815

CITIZEN VOTING AGE POPULATION

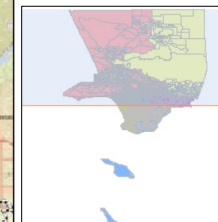
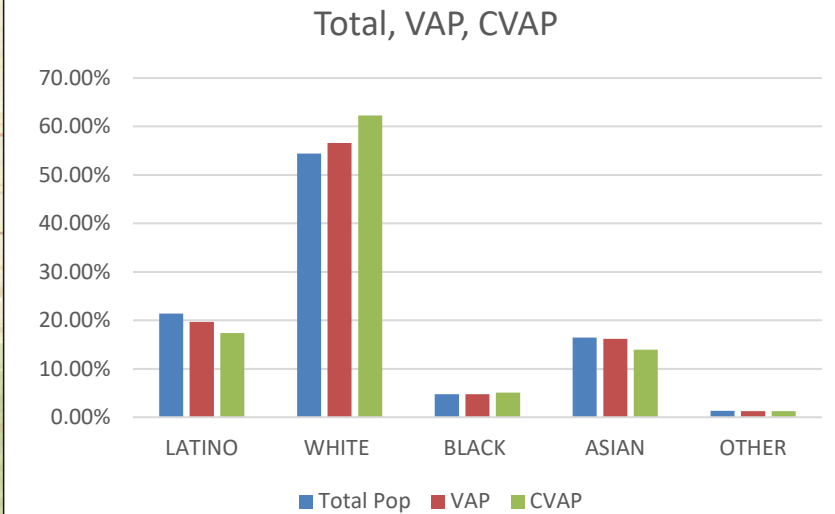
District 1	District 2	District 3	District 4	District 5
260,129	617,346	590,750	602,739	380,804
17.41%	41.32%	39.54%	40.34%	25.48%
929,971	334,332	265,549	197,375	416,453
62.24%	22.37%	17.77%	13.21%	27.87%
76,204	89,847	122,102	35,972	326,016
5.10%	6.01%	8.17%	2.41%	21.82%
N/A	N/A	N/A	N/A	N/A
N/A	N/A	N/A	N/A	N/A
208,613	139,987	144,121	316,393	172,655
13.96%	9.37%	9.65%	21.17%	11.55%
N/A	N/A	N/A	N/A	N/A
N/A	N/A	N/A	N/A	N/A
19,352	15,582	18,062	11,972	22,985
1.30%	1.04%	1.21%	0.80%	1.54%
N/A	N/A	N/A	N/A	N/A
N/A	N/A	N/A	N/A	N/A
1,494,228	1,196,908	1,140,743	1,164,671	1,318,930

## NUMBER OF SPLIT CITIES/CSAS, LA CITY NEIGHBORHOOD COUNCILS, COIS

CITIES - CSAS	NEIGHBORHOOD COUNCILS	COI-A	COI-B	COI-C
23	37	22	19	20

# District 1 - Plan Name: OP-001(eupdates2010)

Name	Total Pop	Deviation	Deviation %
1	2,104,611	95,026	4.73%



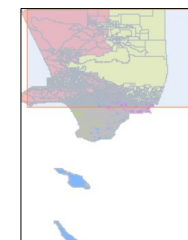
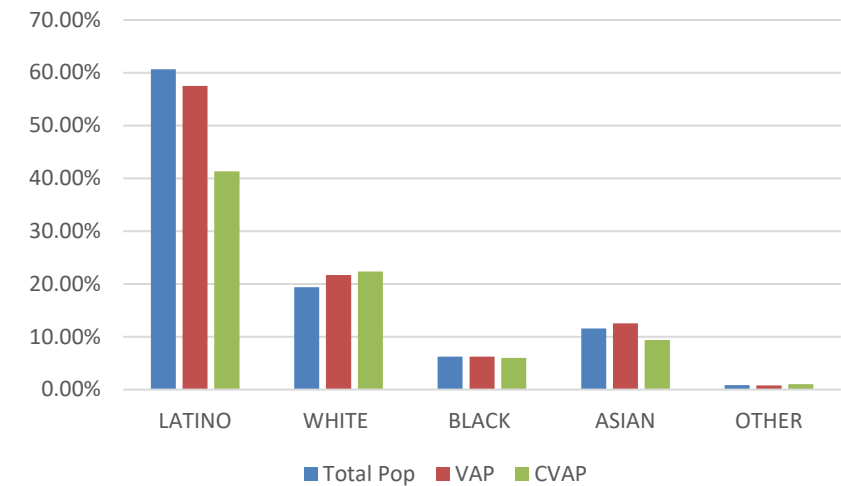
District 1	Total Pop	VAP	CVAP
LATINO	21.40%	19.72%	17.41%
WHITE	54.43%	56.57%	62.24%
BLACK	4.81%	4.77%	5.10%
ASIAN	16.46%	16.20%	13.96%
OTHER	1.38%	1.30%	1.30%

# District 2 - Plan Name: OP-001(eupdates2010)



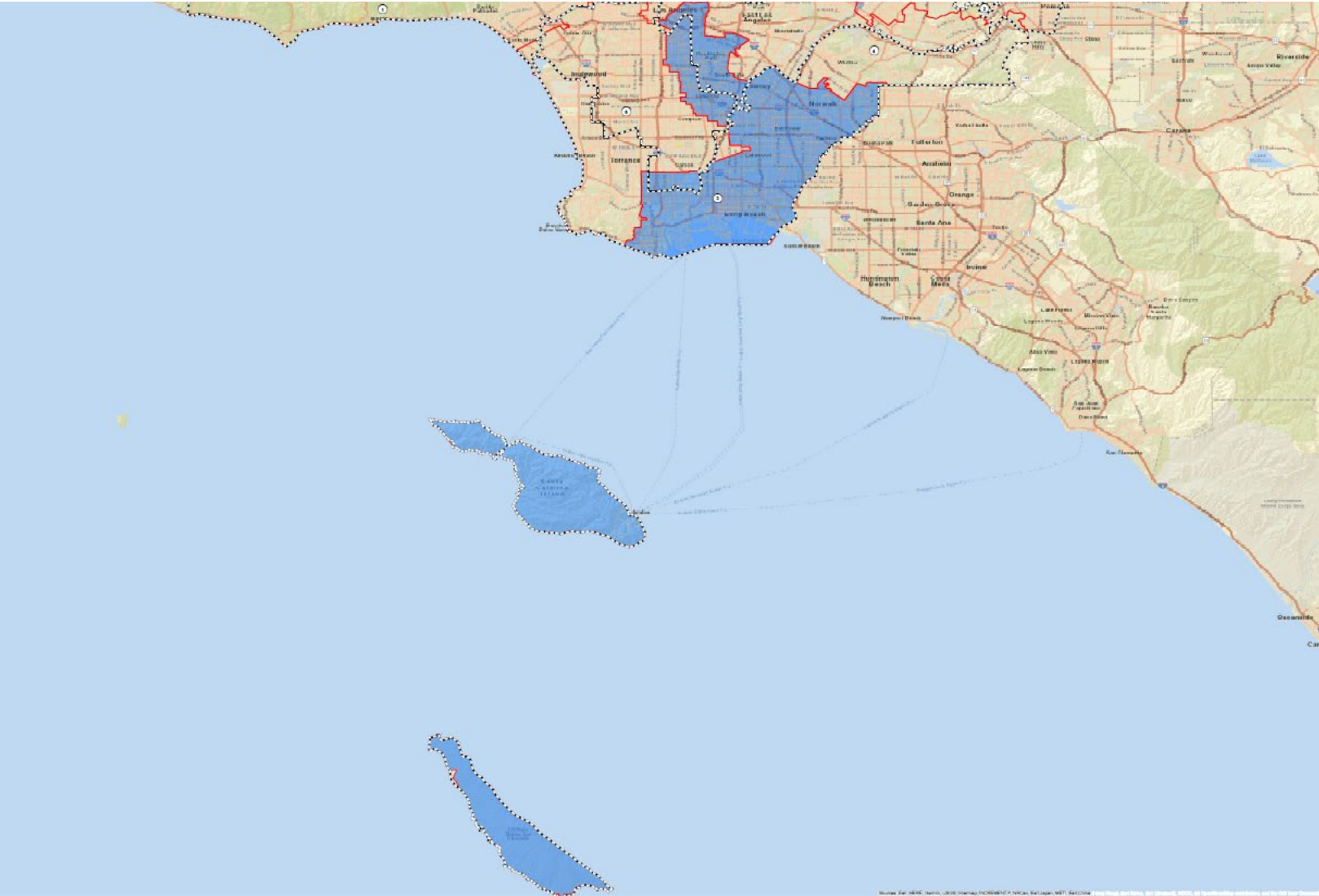
Name	Total Pop	Deviation	Deviation %
2	1,986,132	-23,453	-1.17%

Total, VAP, CVAP



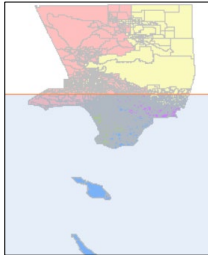
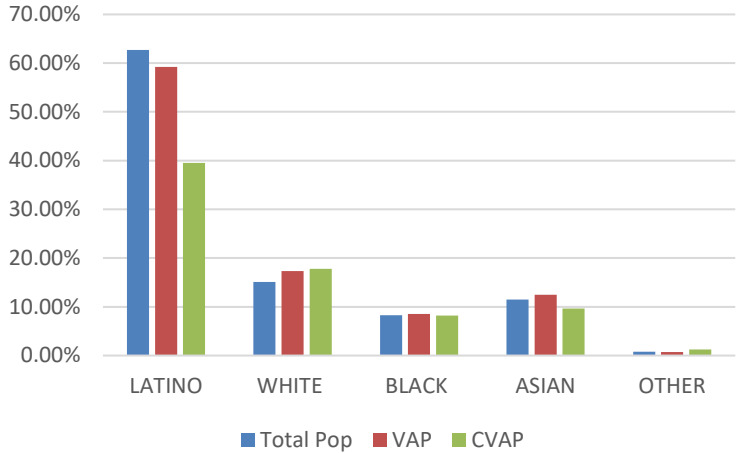
District 2	Total Pop	VAP	CVAP
LATINO	60.69%	57.50%	41.32%
WHITE	19.39%	21.69%	22.37%
BLACK	6.24%	6.23%	6.01%
ASIAN	11.56%	12.52%	9.37%
OTHER	0.83%	0.77%	1.04%

# District 3 - Plan Name: OP-001(eupdates2010)



Name	Total Pop	Deviation	Deviation %
3	1,932,614	-76,971	-3.83%

Total, VAP, CVAP



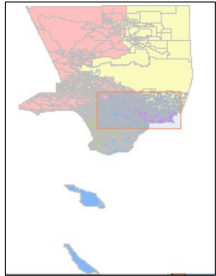
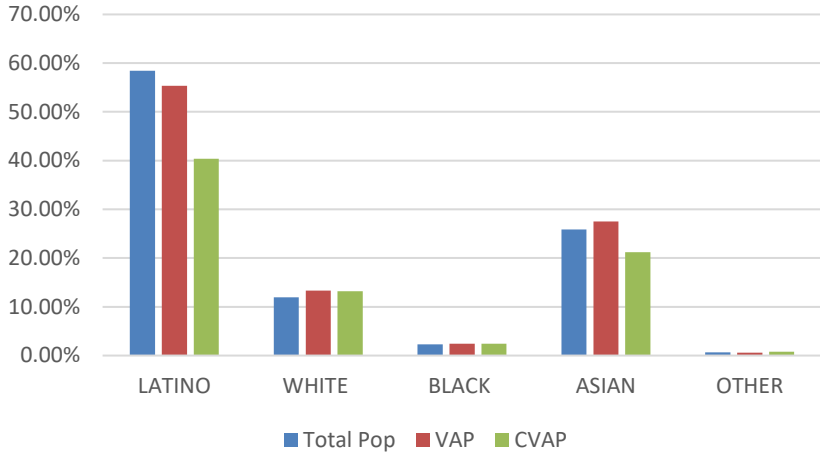
District 3	Total Pop	VAP	CVAP
LATINO	62.71%	59.20%	39.54%
WHITE	15.10%	17.34%	17.77%
BLACK	8.28%	8.56%	8.17%
ASIAN	11.46%	12.48%	9.65%
OTHER	0.78%	0.73%	1.21%

# District 4 - Plan Name: OP-001(eupdates2010)



Name	Total Pop	Deviation	Deviation %
4	1,925,319	-84,266	-4.19%

Total, VAP, CVAP

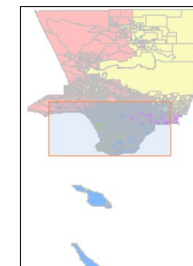
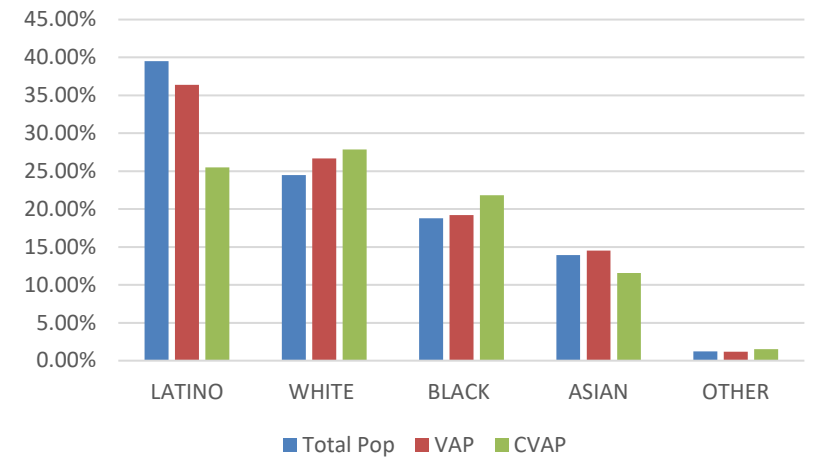


District 4	Total Pop	VAP	CVAP
LATINO	58.43%	55.34%	40.34%
WHITE	11.92%	13.33%	13.21%
BLACK	2.26%	2.43%	2.41%
ASIAN	25.87%	27.48%	21.17%
OTHER	0.63%	0.56%	0.80%

# District 5 - Plan Name: OP-001(eupdates2010)

Name	Total Pop	Deviation	Deviation %
5	2,099,250	89,665	4.46%

Total, VAP, CVAP



District 5	Total Pop	VAP	CVAP
LATINO	39.51%	36.40%	25.48%
WHITE	24.49%	26.68%	27.87%
BLACK	18.78%	19.20%	21.82%
ASIAN	13.93%	14.53%	11.55%
OTHER	1.24%	1.18%	1.54%