



LOS ANGELES COUNTY **REDISTRICTING 2021**

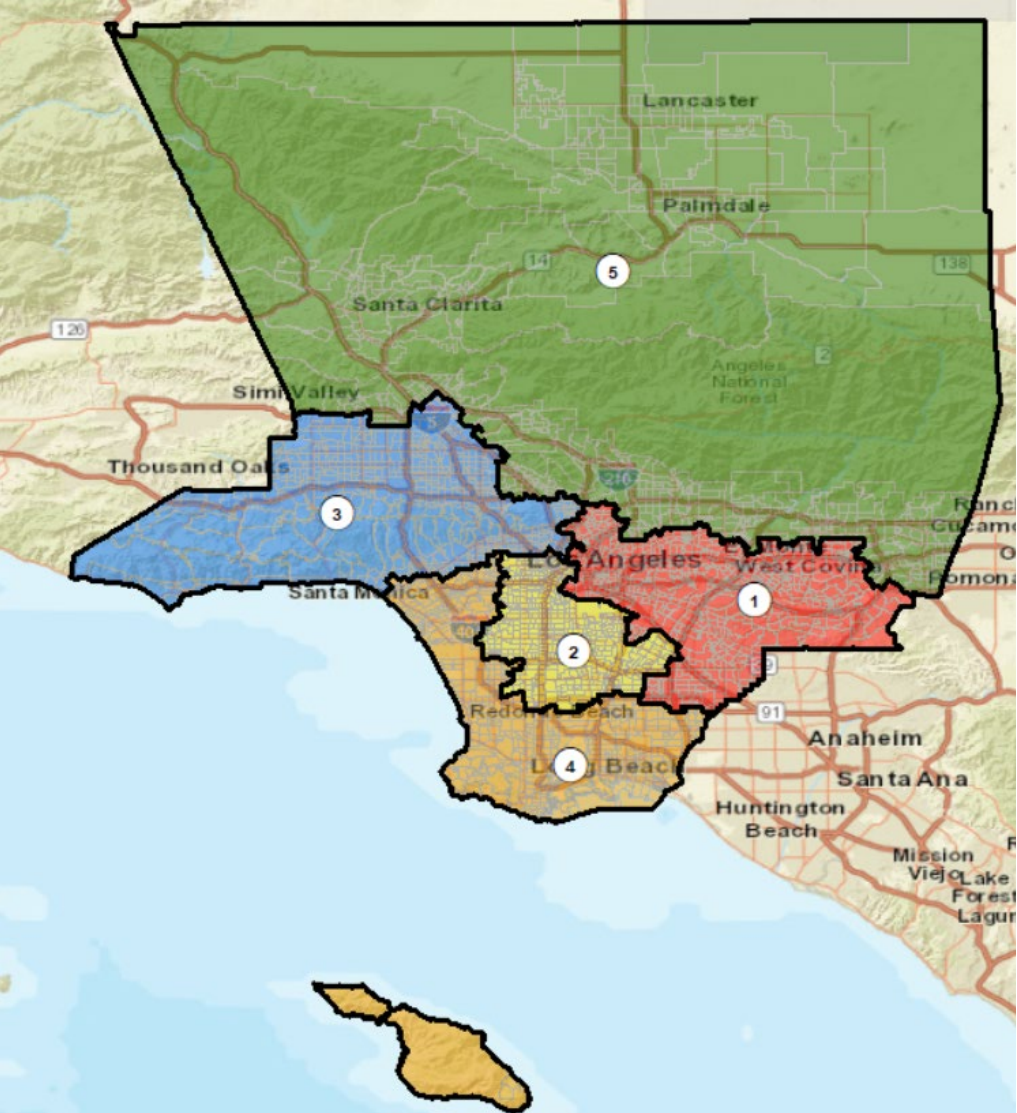
ANALYSIS OF Draft Plan
Name: Draft Map B

Presentation to the County of LOS ANGELES
CITIZENS REDISTRICTING COMMISSION

ARCBridge Consulting & Training Inc.
www.arcbridge.com



Plan Name: Draft Map B

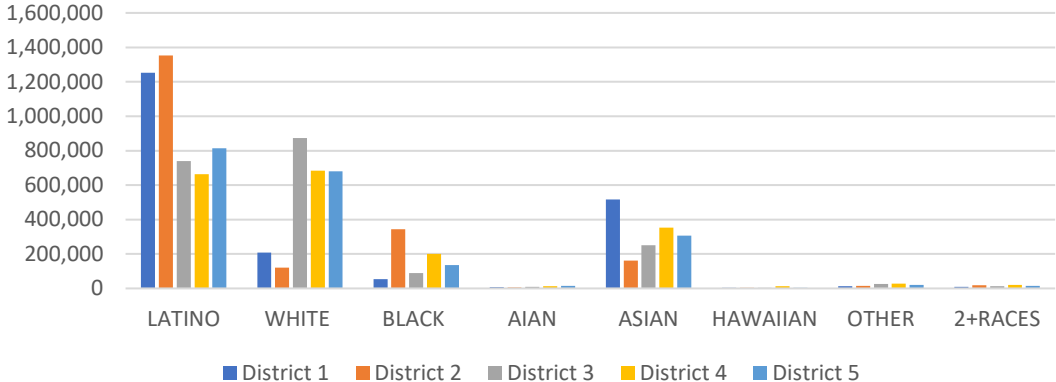


Maximum Deviation – 4.57%

Name	Total Pop	Deviation	Deviation %
1	2,063,488	53,903	2.68%
2	2,020,611	11,026	0.55%
3	2,004,374	-5,211	-0.26%
4	1,971,558	-38,027	-1.89%
5	1,987,895	-21,690	-1.08%

District	Latino	%	White	%	Black	%	Asian	%
1	1,252,297	60.69%	208,008	10.08%	53,333	2.58%	517,245	25.07%
2	1,352,459	66.93%	120,365	5.96%	344,560	17.05%	161,160	7.98%
3	740,331	36.94%	873,500	43.58%	89,112	4.45%	251,423	12.54%
4	662,919	33.62%	684,188	34.70%	199,986	10.14%	352,169	17.86%
5	813,697	40.93%	679,880	34.20%	135,840	6.83%	306,095	15.40%

Ethnic and Racial Information by District



CENSUS 2020 POPULATION AND CITIZEN VOTING AGE POPULATION

TOTAL POPULATION

	District 1	District 2	District 3	District 4	District 5
LATINO	1,252,297	1,352,459	740,331	662,919	813,697
LATINO %	60.69%	66.93%	36.94%	33.62%	40.93%
WHITE	208,008	120,365	873,500	684,188	679,880
WHITE%	10.08%	5.96%	43.58%	34.70%	34.20%
BLACK	53,333	344,560	89,112	199,986	135,840
BLACK %	2.58%	17.05%	4.45%	10.14%	6.83%
AIAN	7,825	5,208	9,730	12,360	14,136
AIAN %	0.38%	0.26%	0.49%	0.63%	0.71%
ASIAN	517,245	161,160	251,423	352,169	306,095
ASIAN %	25.07%	7.98%	12.54%	17.86%	15.40%
HAWAIIAN	3,453	3,855	2,844	12,332	3,155
HAWAIIAN %	0.17%	0.19%	0.14%	0.63%	0.16%
OTHER	11,960	14,737	24,861	26,703	20,198
OTHER %	0.58%	0.73%	1.24%	1.35%	1.02%
2+RACES	9,367	18,267	12,573	20,901	14,894
2+RACES%	0.45%	0.90%	0.63%	1.06%	0.75%
TOTAL	2,063,488	2,020,611	2,004,374	1,971,558	1,987,895

VOTING AGE POPULATION

District 1	District 2	District 3	District 4	District 5
946,447	986,335	563,811	492,845	590,257
57.76%	63.61%	34.17%	30.84%	37.92%
185,941	107,253	758,798	598,323	577,812
11.35%	6.92%	45.99%	37.44%	37.12%
44,623	280,189	75,579	162,261	103,728
2.72%	18.07%	4.58%	10.15%	6.66%
6,703	4,243	8,390	10,687	11,871
0.41%	0.27%	0.51%	0.67%	0.76%
436,751	145,163	212,953	288,764	245,012
26.66%	9.36%	12.91%	18.07%	15.74%
2,785	2,994	2,271	9,715	2,508
0.17%	0.19%	0.14%	0.61%	0.16%
8,518	10,386	19,107	20,709	14,989
0.52%	0.67%	1.16%	1.30%	0.96%
6,712	14,131	9,039	14,765	10,345
0.41%	0.91%	0.55%	0.92%	0.66%
1,638,480	1,550,694	1,649,948	1,598,069	1,556,522

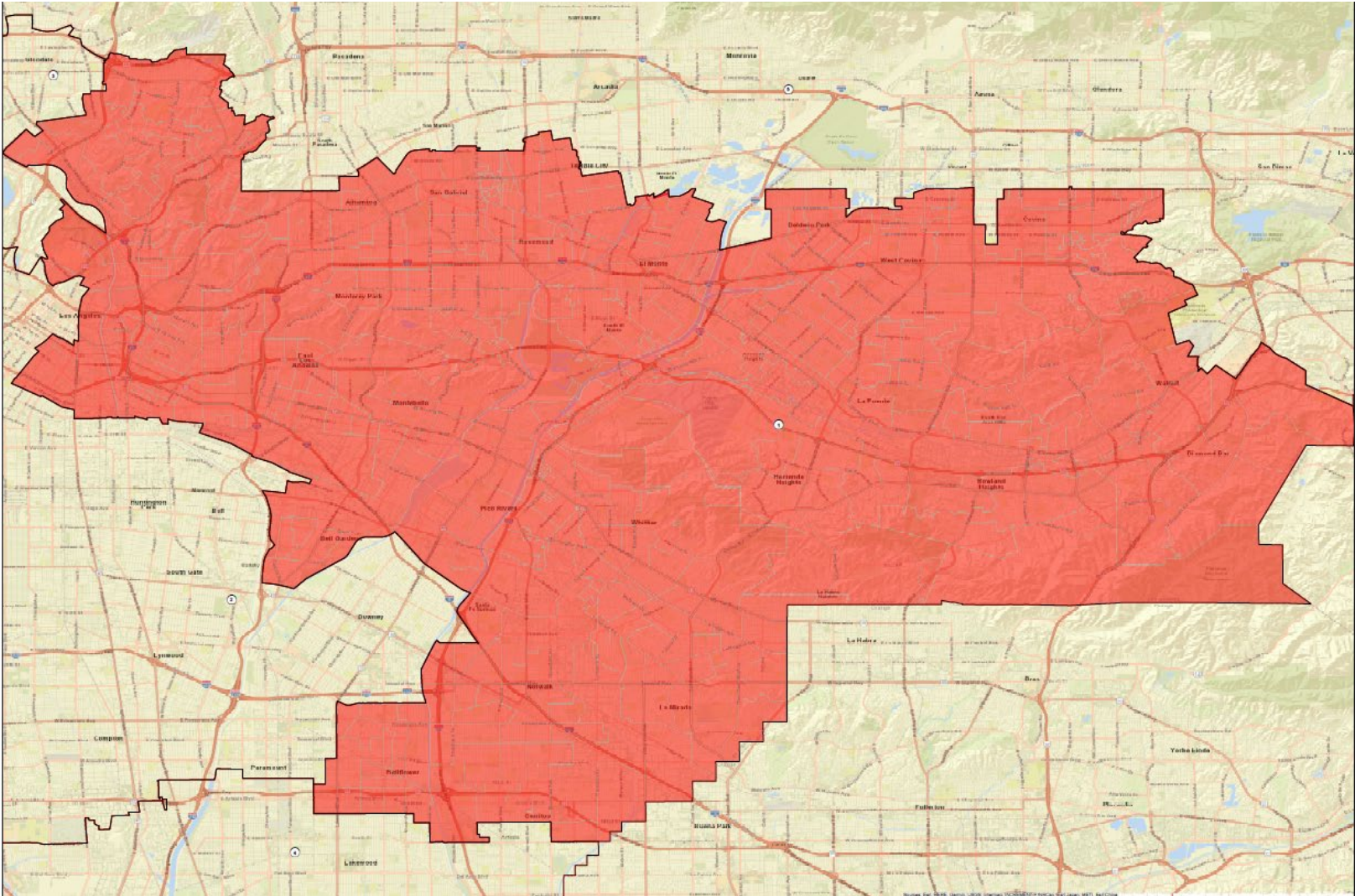
CITIZEN VOTING AGE POPULATION

District 1	District 2	District 3	District 4	District 5
719,516	573,312	380,732	346,769	431,439
55.05%	54.15%	28.50%	26.30%	33.31%
197,233	97,292	713,149	569,816	566,190
15.09%	9.19%	53.38%	43.22%	43.72%
44,036	281,285	69,109	158,547	97,164
3.37%	26.57%	5.17%	12.02%	7.50%
N/A	N/A	N/A	N/A	N/A
N/A	N/A	N/A	N/A	N/A
332,694	93,850	157,744	216,639	180,842
25.45%	8.86%	11.81%	16.43%	13.96%
N/A	N/A	N/A	N/A	N/A
N/A	N/A	N/A	N/A	N/A
13,535	13,016	15,149	26,773	19,480
1.04%	1.23%	1.13%	2.03%	1.50%
N/A	N/A	N/A	N/A	N/A
N/A	N/A	N/A	N/A	N/A
1,307,014	1,058,755	1,335,883	1,318,544	1,295,115

NUMBER OF SPLIT CITIES/CSAS, LA CITY NEIGHBORHOOD COUNCILS, COIS

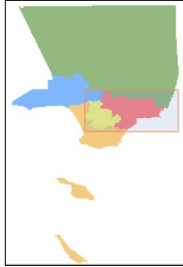
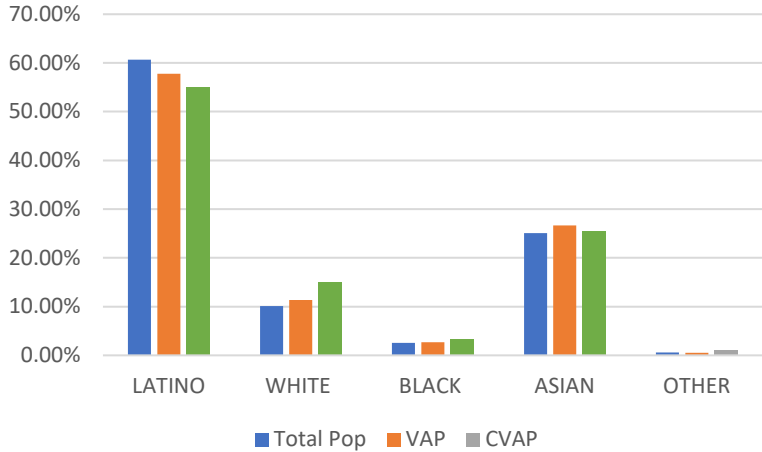
Max Deviation	Number of Districts with Polsby Popper-Compactness Score of >.2	# Majority Minority Districts		Splits		Community of Interest Models (COI)		
		Based on Total Population	Based on CVAP	Consolidated Statistical Areas (CSAs) # CSAs	Neighborhood Councils	COI A	COI B	COI C
4.57%	4	2	2	21	19	11	10	12

District 1



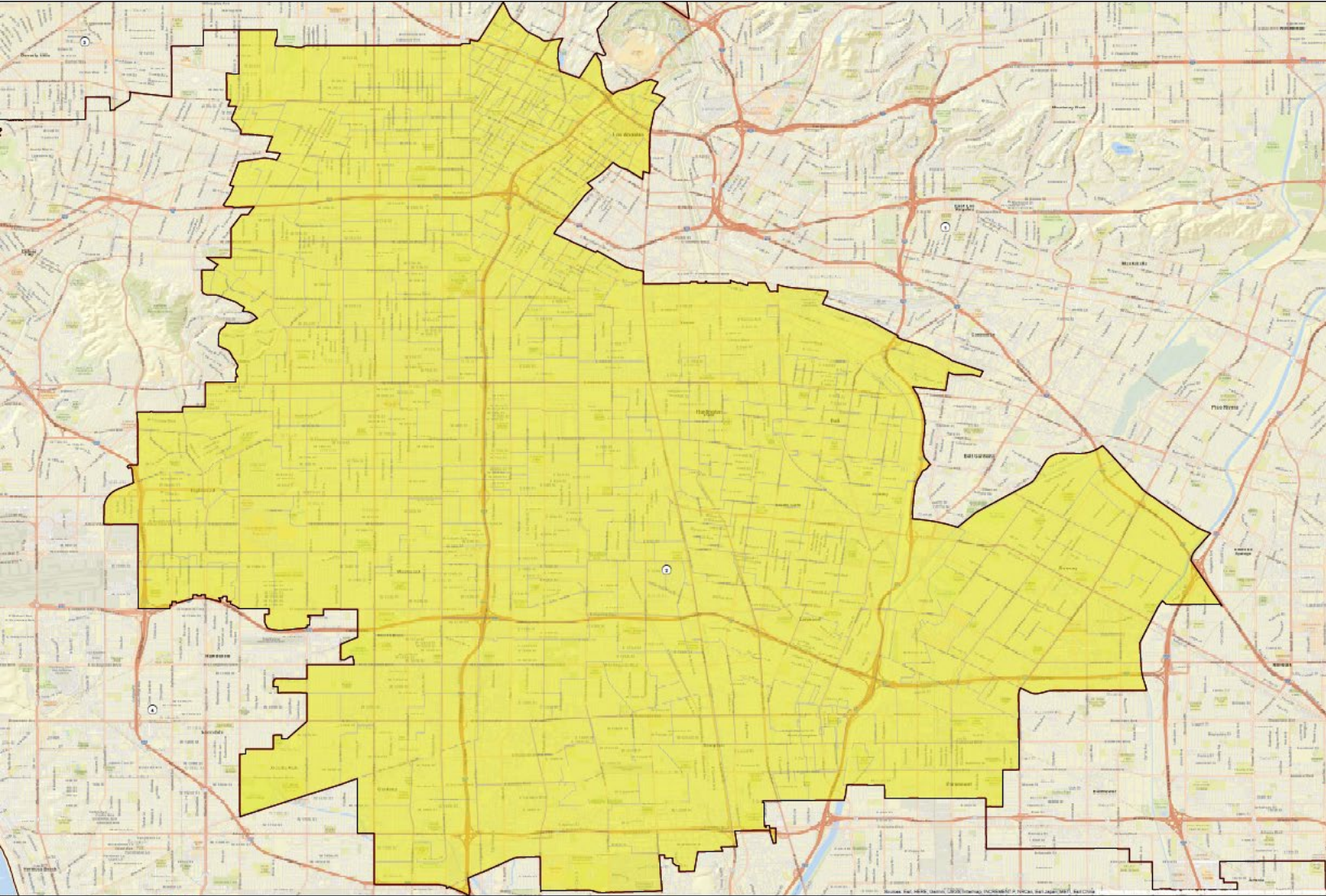
Name	Total Pop	Deviation	Deviation %
1	2,063,488	53,903	2.68%

Total Pop, VAP, CVAP



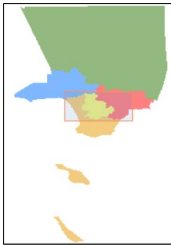
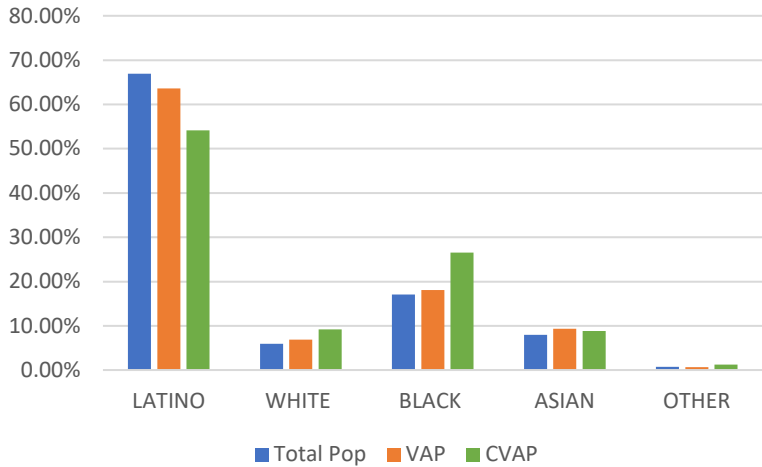
District 1	Total Pop	VAP	CVAP
LATINO	60.69%	57.76%	55.05%
WHITE	10.08%	11.35%	15.09%
BLACK	2.58%	2.72%	3.37%
ASIAN	25.07%	26.66%	25.45%
OTHER	0.58%	0.52%	1.04%

District 2



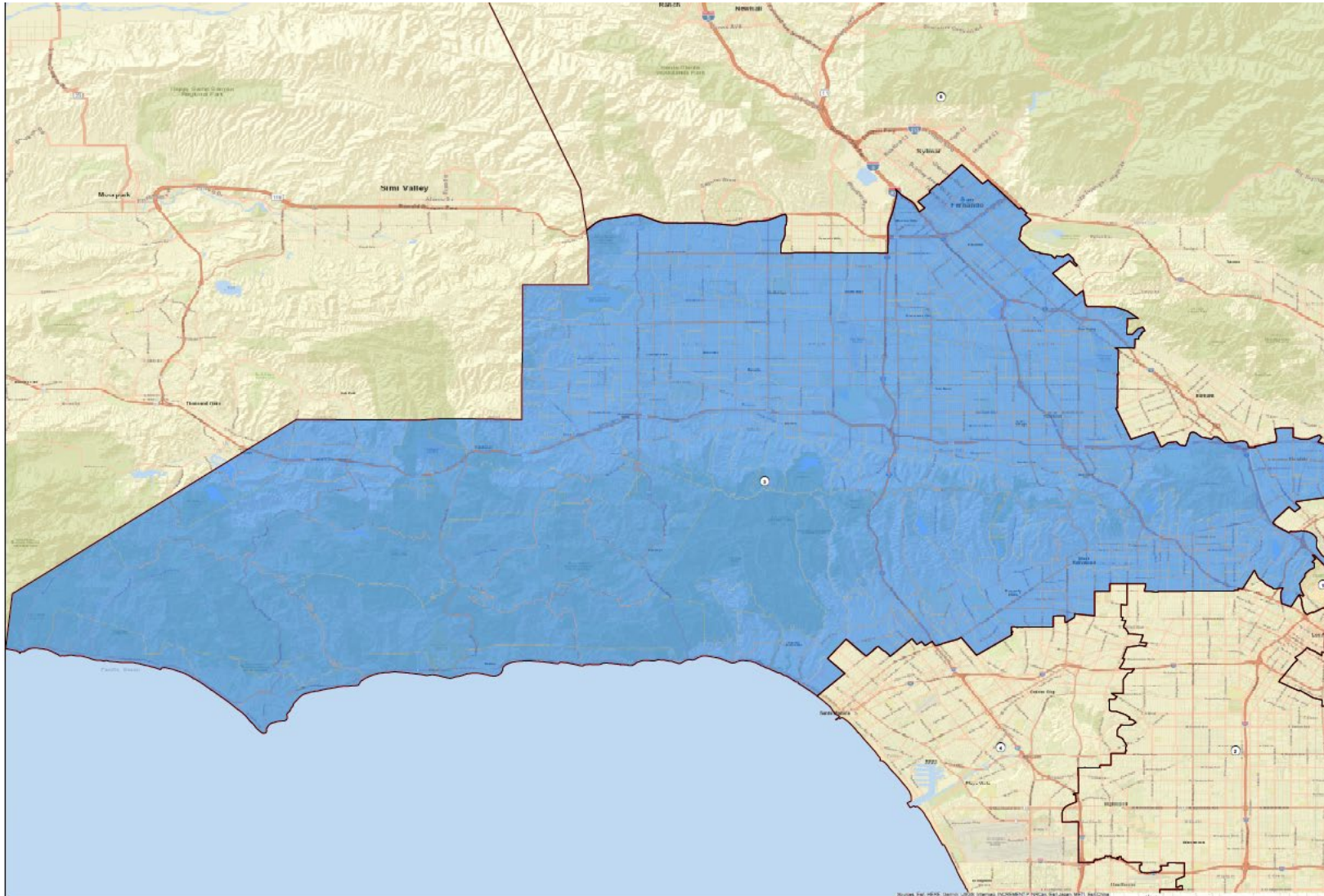
Name	Total Pop	Deviation	Deviation %
2	2,020,611	11,026	0.55%

Total Pop, VAP, CVAP



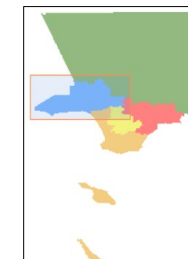
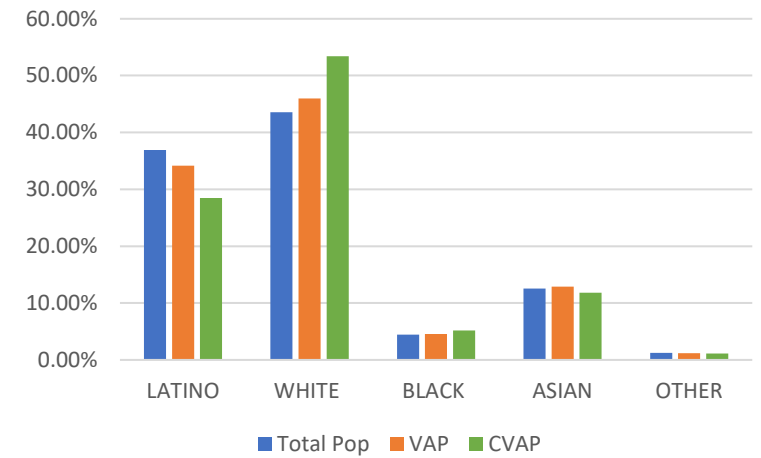
District 2	Total Pop	VAP	CVAP
LATINO	66.93%	63.61%	54.15%
WHITE	5.96%	6.92%	9.19%
BLACK	17.05%	18.07%	26.57%
ASIAN	7.98%	9.36%	8.86%
OTHER	0.73%	0.67%	1.23%

District 3



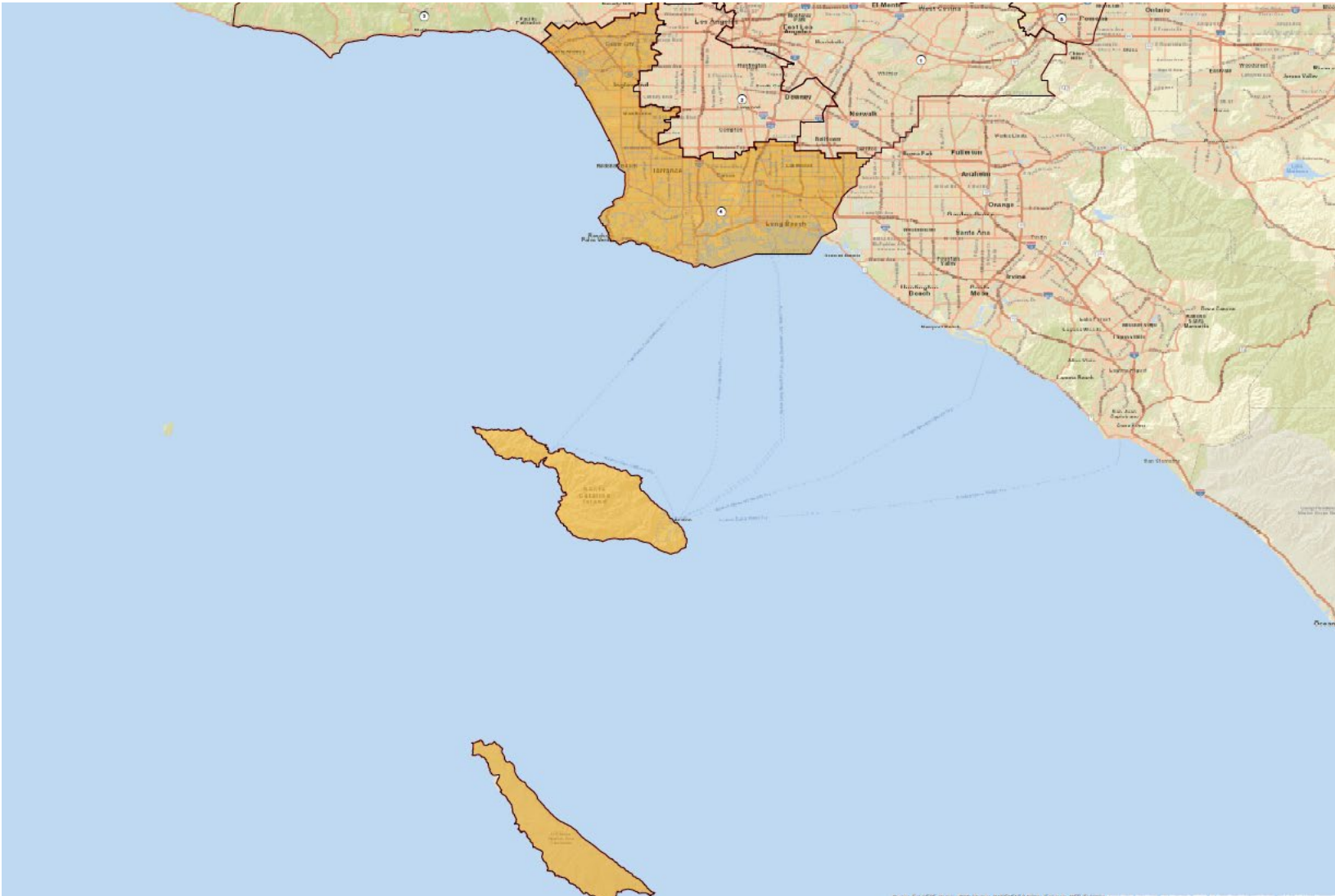
Name	Total Pop	Deviation	Deviation %
3	2,004,374	-5,211	-0.26%

Total Pop, VAP, CVAP



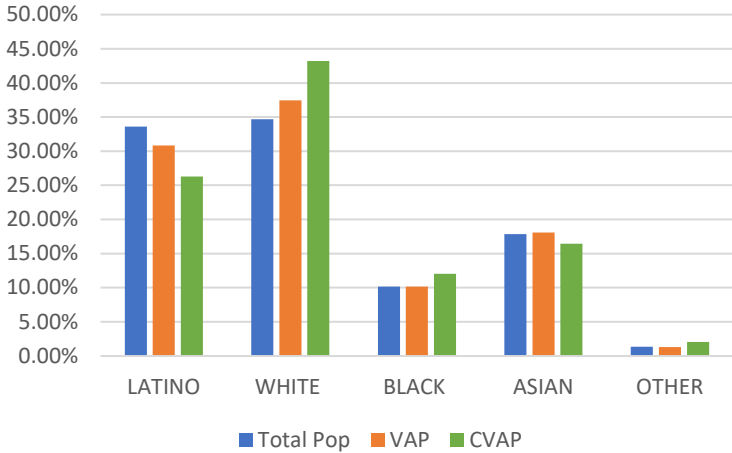
District 3	Total Pop	VAP	CVAP
LATINO	36.94%	34.17%	28.50%
WHITE	43.58%	45.99%	53.38%
BLACK	4.45%	4.58%	5.17%
ASIAN	12.54%	12.91%	11.81%
OTHER	1.24%	1.16%	1.13%

District 4



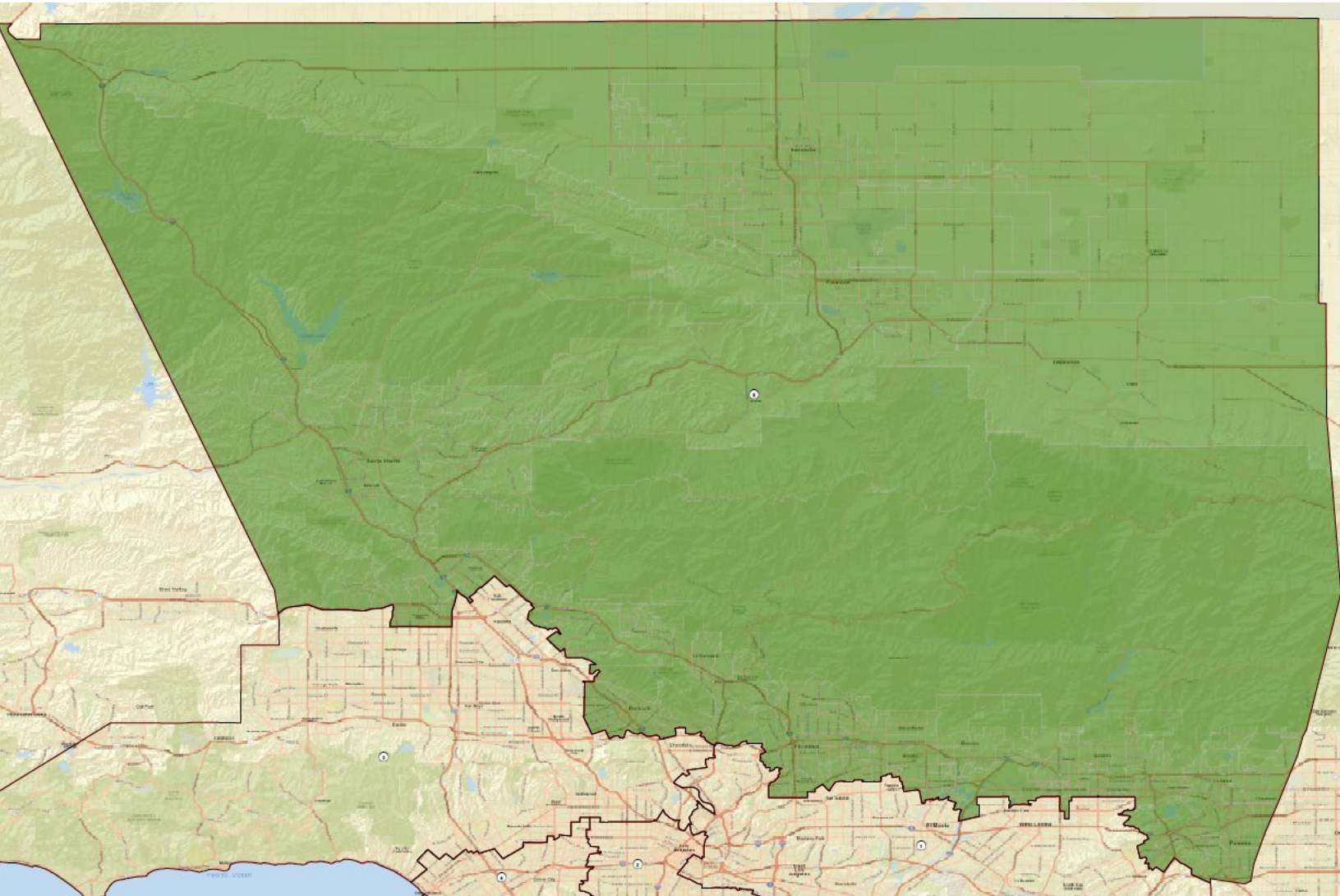
Name	Total Pop	Deviation	Deviation %
4	1,971,558	-38,027	-1.89%

Total Pop, VAP, CVAP



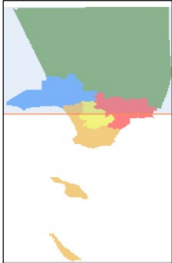
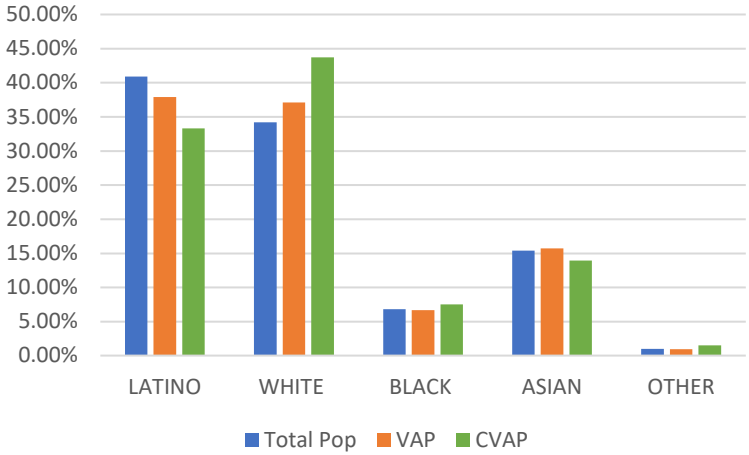
District 4	Total Pop	VAP	CVAP
LATINO	33.62%	30.84%	26.30%
WHITE	34.70%	37.44%	43.22%
BLACK	10.14%	10.15%	12.02%
ASIAN	17.86%	18.07%	16.43%
OTHER	1.35%	1.30%	2.03%

District 5



Name	Total Pop	Deviation	Deviation %
5	1,987,895	-21,690	-1.08%

Total Pop, VAP, CVAP



District 5	Total Pop	VAP	CVAP
LATINO	40.93%	37.92%	33.31%
WHITE	34.20%	37.12%	43.72%
BLACK	6.83%	6.66%	7.50%
ASIAN	15.40%	15.74%	13.96%
OTHER	1.02%	0.96%	1.50%