



# LOS ANGELES COUNTY **REDISTRICTING 2021**

Initial Analysis of Communities of Interest (COI) Hypothesis  
10-13-21

Presentation to the County of LOS ANGELES  
CITIZENS REDISTRICTING COMMISSION

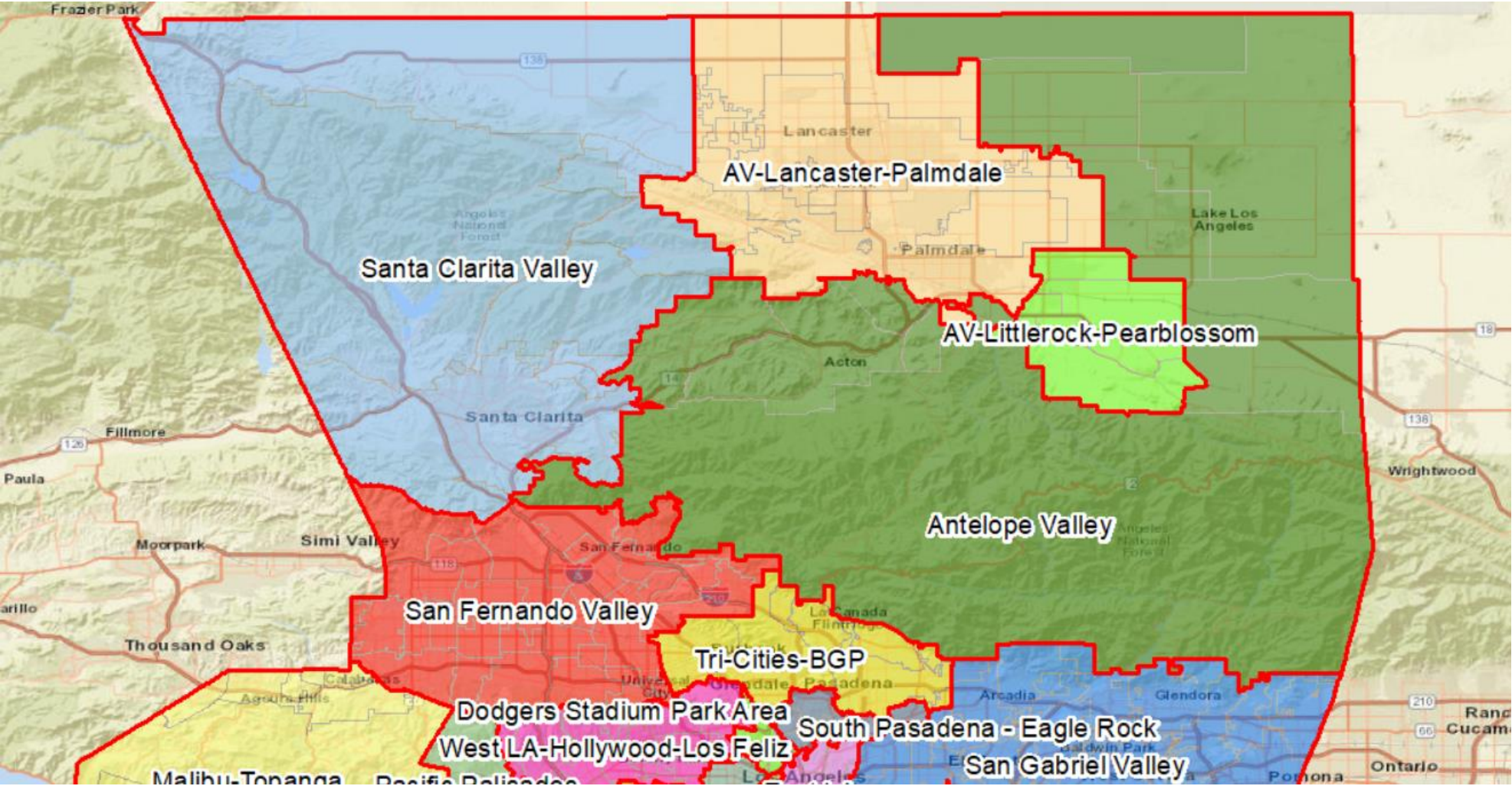
ARCBridge Consulting & Training Inc.  
[www.arcbridge.com](http://www.arcbridge.com)



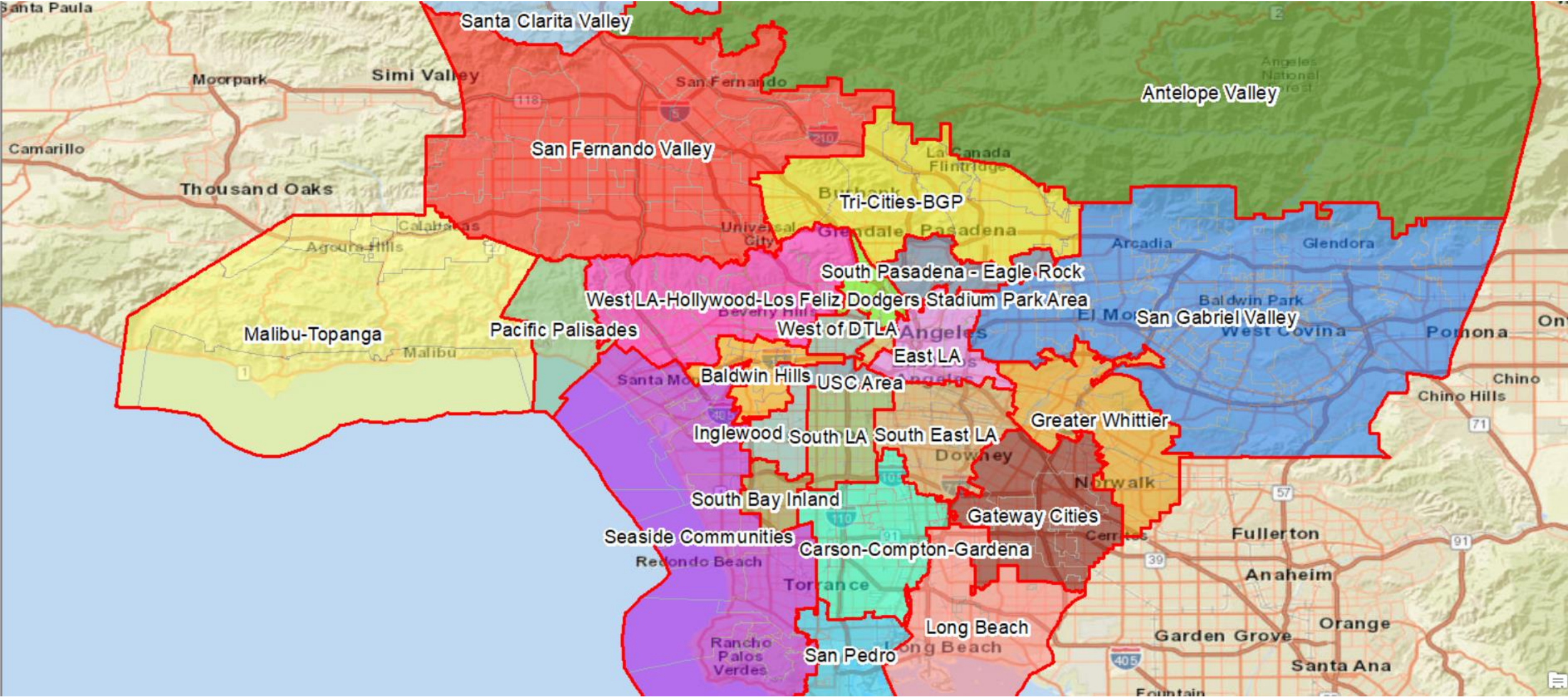
# Los Angeles County – Communities of Interest -10-13-21



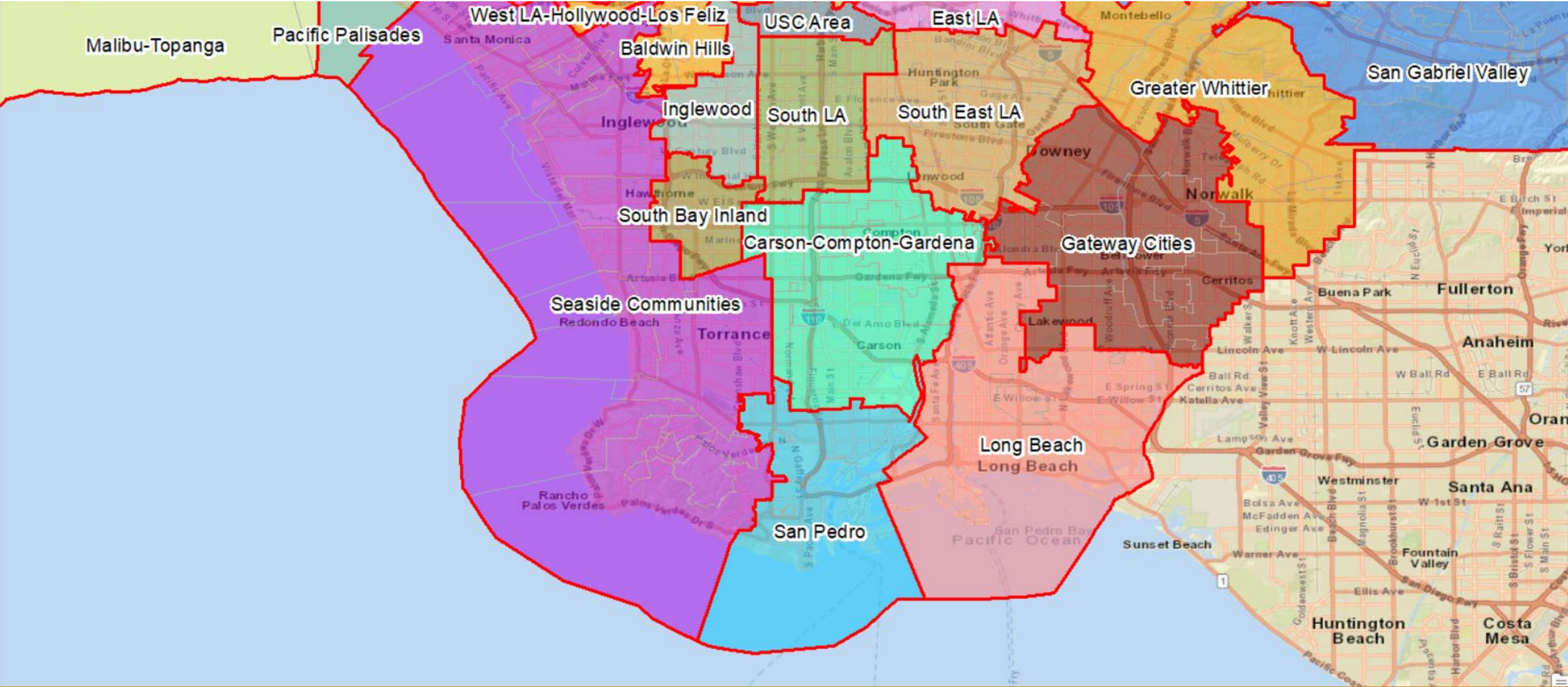
# Los Angeles County – Communities of Interest -10-13-21 – North



# Los Angeles County – Communities of Interest -10-13-21 – Central



# Los Angeles County – Communities of Interest -10-13-21 – South



# Los Angeles County – Communities of Interest -10-13-21 - Population

	Community of Interest	Population		Community of Interest	Population
1	Antelope Valley	31,696	15	San Fernando Valley	1,505,137
2	AV-Lancaster-Palmdale	368,524	16	San Gabriel Valley	1,522,292
3	AV-Littlerock-Pearblossom	17,237	17	San Pedro	179,730
4	Baldwin Hills	222,722	18	Santa Clarita Valley	291,144
5	Carson-Compton-Gardena	425,555	19	Seaside Communities	682,962
6	Dodgers Stadium Park Area	84,831	20	South Bay Inland	161,499
7	DTLA-Chinatown	55,292	21	South East LA	425,056
8	East LA	308,162	22	South LA	409,628
9	Gateway Cities	533,349	23	South Pasadena - Eagle Rock	168,325
10	Greater Whittier	366,353	24	Tri-Cities-BGP	535,366
11	Inglewood	169,664	25	USC Area	117,837
12	Long Beach	483,894	26	West LA-Hollywood-Los Feliz	560,771
13	Malibu-Topanga	82,575	27	West of DTLA	279,696
14	Pacific Palisades	24,712			