

# Citizens Redistricting Commission (CRC) Meeting

## LIVE STREAM WILL BEGIN SHORTLY

<https://www.youtube.com/LACountyRedistricting/>



LOS ANGELES COUNTY  
**REDISTRICTING**  
2021





LOS ANGELES COUNTY  
**REDISTRICTING 2021**

# Los Angeles County Citizens Redistricting Commission (CRC)

Special Meeting: October 6, 2021





# 1. Call to Order



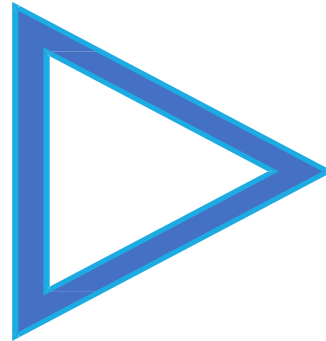
# Notice

This meeting is being recorded and will be posted on LA County CRC website:

<https://redistricting.lacounty.gov>

This meeting is streaming live at:

<https://www.youtube.com/LACountyRedistricting/>



**During the CRC meeting, if you need technical assistance,  
use the Q&A button at the bottom of your Zoom Webinar screen.**

**Thai Le, LA County CRC Clerk, can assist you.**





## 2. Roll Call

Commissioner Jean Franklin

Commissioner David Holtzman

Commissioner Mary Kenney

Co-Chair Daniel Mayeda

Commissioner Mark Mendoza

Commissioner Apolonio Morales

Commissioner Nelson Obregon

Commissioner Priscilla Orpinela-Segura

Commissioner Hailes Soto

Commissioner Saira Soto

Commissioner Brian Stecher

Commissioner John Vento

Co-Chair Carolyn Williams

Commissioner Doreena Wong





# 3. Approval of Agenda

Co-Chair Carolyn Williams



**4. Update on  
the U.S.  
Department of  
Justice (DOJ)  
Newly  
Released  
Redistricting  
Guidance**

Co-Chair  
Carolyn  
Williams

**Presenter:**

Bruce Adelson, Esq., Federal Compliance Consulting LLC; Instructor of Family Medicine, Georgetown University School of Medicine; Adjunct Professor of Law, University of Pittsburgh School of Law

Note: This is the first time DOJ has issued guidance about Voting Rights Act (VRA), Section 2, and its impact on redistricting.



# How to Make Public Comment

*Type your name and affiliation/organization into QA  
if you want to make a General Public Comment.*

*If on a phone line, press \*9 to raise your hand.  
Once called upon, press \*6 to unmute and speak.*

*Each Person Gets 2 Minutes unless the Co-Chairs determine otherwise.*

*Each person only gets 1 opportunity to speak.*

When you speak, share your name and affiliation at the beginning.







## **5. Content Items – Approval of Minutes**

**Co-Chair Dan Mayeda**

- a. Review and take appropriate action on the September 14, 2021, Draft Minutes
- b. Review and take appropriate action on the September 22, 2021, Draft Minutes
- c. Review and take appropriate action on the September 29, 2021, Draft Minutes





## 6a. Discussion of potential Communities of Interest (COIs), based on public input to date and consider direction to ARCBridge to prepare COI Maps based on Commission Direction Provided — Co- Dan Mayeda

1. Commissioner Team Leader Quick Overview of their Team’s Process – links to recorded discussions available in the Executive Director’s Report

- a. Team 1—Commissioner Vento
- b. Team 2—Commissioner Morales
- c. Team 3—Co-Chair Mayeda
- d. Team 4—Co-Chair Williams
- e. Team 5—Commissioner Stecher

Team	Commissioners	Zones
1	Commissioners John Vento and Mark Mendoza	A, B, D, I
2	Commissioners Priscilla Orpinela-Segura, Saira Soto, Apolonio Morales	E, F, G
3	Commissioners David Holtzman and Nelson Obregon, Co-Chair Daniel Mayeda	B, C, D, H
4	Commissioners Jean Franklin and Hailes Soto; Co-Chair Carolyn Williams	E, F, I
5	Commissioners Brian Stecher, Mary Kenney, Doreena Wong	A, C, G, H



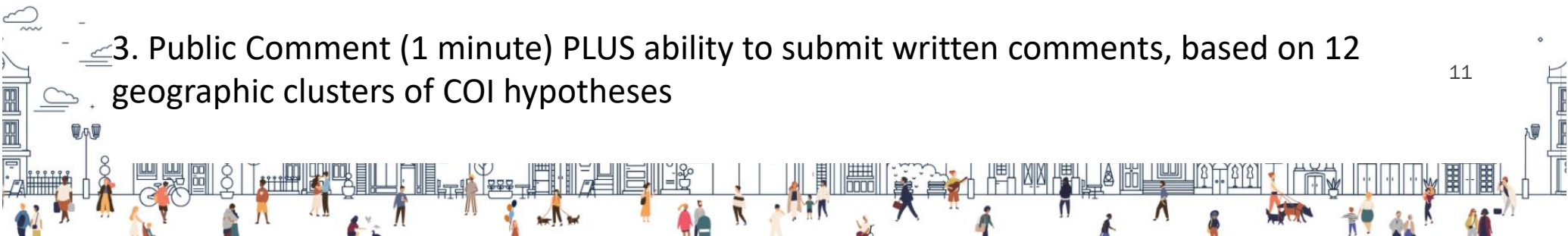


## **6a. Discussion of potential Communities of Interest (COIs), based on public input to date and consider direction to ARCBridge to prepare COI Maps based on Commission Direction Provided — Co- Dan Mayeda**

2. Executive Director Report, Summarizing COI Hypotheses developed the Commissioner teams – Gayla Kraetsch Hartsough, Ph.D.

- Completion of 12 public hearings with at least 1 physically (hybrid) in each of the current 5 supervisorial districts
- Preliminary and COI maps submitted to date are posted on CRC website
- COI hypotheses are a starting point for the next mapping phase of the LA County CRC; they can be:
  - Drawn by ARCBridge on a map
  - Used to identify areas of overlap, agreement, or conflicting viewpoints
  - Refined based on public input
  - Used as possible building blocks for redistricting maps
- Formal report summarizing Commissioner Team draft COI hypotheses posted on website

3. Public Comment (1 minute) PLUS ability to submit written comments, based on 12 geographic clusters of COI hypotheses





## 6a. Discussion of potential Communities of Interest (COIs), based on public input to date and consider direction to ARCBridge to prepare COI Maps based on Commission Direction Provided — Co- Dan Mayeda

### 4. Commissioner Discussion

Note: The public may submit written comments about specific geographic COI areas at <https://publiccomment.redistricting.lacounty.gov/> by geographic area:

- a. Greater East Los Angeles (ELA) Communities
- b. South Central LA, South LA, and Southeast LA Communities
- c. Harbor & Gateway Cities PLUS Long Beach
- d. Baldwin Hills, Hollywood, Westside North, Hancock Park, Los Feliz, Silver Lake
- e. North Country: AV and SCV
- f. Sea Coastal Communities
- g. Santa Monica Mountains: Topanga, Malibu, Pacific Palisades, Las Virgenes, Santa Monica
- h. San Fernando Valley (SFV)
- i. Tri-Cities: Burbank, Glendale, and Pasadena
- j. San Gabriel Valley (SGV)
- k. Montebello and Monterey Park
- l. Whittier

### 5. Next steps – ARCBridge Preparation of COI Maps





LOS ANGELES COUNTY  
**REDISTRICTING 2021**

6b. Update on the Press  
Conference Logistics from the Ad  
Hoc Working Group on Outreach  
– Co-Chair Carolyn Williams and  
Commissioner Apolonio Morales

**When: Thursday, October 7, 2021, at 11 a.m.**  
**Where: Front Steps of the Hall of Administration**

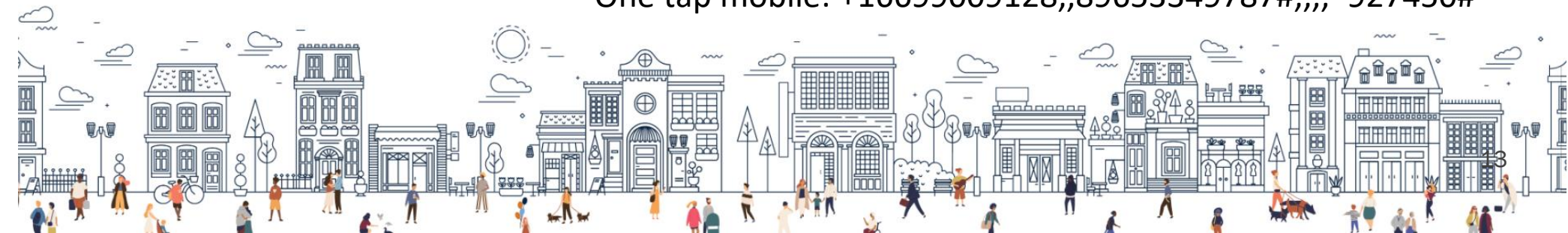
500 W. Temple Street, Los Angeles, CA 90012

*Or*

Join virtually: [click here](#)

Passcode: 927450

One tap mobile: +16699009128,,89653349787#,,,,\*927450#





**6c. Continuation of Consideration of Establishing an Ad Hoc Working Group or Subcommittee to Review Maps Submitted, Organize Them for Commission Consideration, and/or Develop Working Drafts of Maps for Full Commission Debate — Co-Chair Daniel Mayeda**

# Options



Options	Number of Commissioners	Focus of Ad Hoc WG in October 2021
<p><b>1. Establish a new Ad Hoc WG on Mapping to work with ARCBridge to review/group maps and draw mapping options for the full Commission to consideration</b></p>	<ul style="list-style-type: none"> <li>▪ Permit participation of up to 7 Commissioners</li> <li>▪ Commissioners interested should let the Co-Chairs know</li> <li>▪ Members to be selected by the Co-Chairs</li> </ul>	<p><b>October:</b> Ad Hoc WG works with ARCBridge to define themes and prepare groups of maps, along the lines of the themes, for consideration before the full Commission and to solicit public input.</p> <p><b>Last week in October:</b> Ad Hoc WG develops or proposes redistricting mapping options for the full Commission’s consideration. ARCBridge draws the options.</p>
<p><b>2. Establish a new Ad Hoc WG on Mapping to work with ARCBridge to review/group maps for the full Commission to study and draw mapping options</b></p>	<ul style="list-style-type: none"> <li>▪ Same as above</li> </ul>	<p><b>October:</b> Ad Hoc WG works with ARCBridge to define themes and prepare groups of maps, along the lines of the themes, for consideration before the full Commission and to solicit public input.</p> <p><b>Last week in October:</b> Full Commission develops redistricting mapping options for ARCBridge to draw.</p>
<p><b>3. Use the full Commission to perform this work at regularly posted meetings</b></p>	<ul style="list-style-type: none"> <li>▪ All 14 Commissioners</li> </ul>	<p><b>October:</b> Have ARCBridge bundle the maps according to themes for the full Commission to consider and solicit public input.</p> <p><b>Last week in October:</b> Full Commission develops redistricting mapping options for ARCBridge to draw</p>

In all three options:

- **November:** Full Commission conducts public hearings to solicit public input on the redistricting mapping options; it requests ARCBridge to refine the options, based on public input.
- **By December 15, 2021:** Full Commission adopts final map.

# Timeline







# 7. Executive Director Report

Gayla Kraetsch Hartsough, Ph.D.



Tomorrow, Thursday, October 7, 2021, at 2:00 pm: Updated free mapping software with official data sets: To be launched

Friday, October 8, 2021, 9:30-10:30 am: Mapping software training in Spanish – details on the LA County CRC website





# Templates Available for Public Use to Draw Maps

Plan Name	Description
<b>New Supervisorial Districts Map (Option 1)</b>	Use this template to start with a CLEAN SLATE for drawing the 5 Supervisorial Districts, using the boundaries for cities, unincorporated areas, and communities within the City of Los Angeles
<b>Revise Current Supervisorial Districts Template (Option 2)</b>	Use this template if you want to start with the 5 Supervisorial Districts and make minor adjustments to their existing boundaries
<b>Community of Interest (COI) Template (Option 3)</b>	Use if you want to SUBMIT ONLY ONE SUPERVISORIAL DISTRICT to reflect your local and surrounding communities
<b>Etc.</b>	Will be adding the LA County CRC map options in late October so that the public can review and submit proposed refinements to them...



# October LA County CRC Meetings

Scheduled to be virtual as per the Commission's approved Resolution No. 2021-01

# Adjournment

Co-Chair Daniel Mayeda

To learn about the LA County CRC, sign up at:  
<https://redistricting.lacounty.gov/>

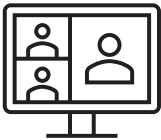




Sign up and stay informed: <https://redistricting.lacounty.gov>



**October meetings will only be virtual.** If we offer hybrid formats in the future, attendance in person in keeping with COVID-19 health safety protocols – **masks required**



Attend and participate virtually in CRC meetings and public hearings:  
<https://us02web.zoom.us/j/82726060927>



Listen only to CRC meetings and public hearings by calling:  
(669) 900-9128, enter: 827 2606 0927#



View CRC meetings and public hearings on YouTube:  
<https://www.youtube.com/LACountyRedistricting/>



Submit written comments via:  
<https://publiccomment.redistricting.lacounty.gov/>  
By mail: Los Angeles County CRC, P.O. Box 56447, Sherman Oaks, CA 91413



## LA County CRC Resource Support

### Staff

Gayla Kraetsch Hartsough, Ph.D.  
LA County CRC Executive Director  
President, KH Consulting Group  
Associate Adjunct Faculty, University of Southern California  
[ghartsough@crc.lacounty.gov](mailto:ghartsough@crc.lacounty.gov)

Thai V. Le  
LA County CRC Clerk  
Consultant, KH Consulting Group  
Doctoral Candidate, University of Southern California  
GIS, Public Policy, and Technical Support  
[tle@crc.lacounty.gov](mailto:tle@crc.lacounty.gov)

### Subject Matter Experts

Carlos De Alba, Marketing, Media, and Outreach Consultant

Priti Mathur, ARCBridge  
Demographic Analysis and ESRI Mapping Software

Bruce Adelson, Esq., Federal Compliance Consulting LLC  
Professor Jonathan N. Katz, Ph.D., Caltech  
Racially Polarized Voting Analysis

### Independent Legal Counsel

Holly O. Whatley, Esq., Shareholder  
Aleks R. Giragosian, Esq., Senior Counsel  
Pamela Graham, Esq., Senior Counsel

Colantuono, Highsmith & Whatley, PC 790 E.  
Colorado Blvd., Suite 850  
Pasadena, CA 91101-2109  
(213) 542-5700 tel  
(213) 542-5710 fax  
[hwhatley@chwlaw.us](mailto:hwhatley@chwlaw.us)

# Citizens Redistricting Commission (CRC) Meeting

**\* RECESS \***

**LIVE STREAM WILL RESUME SHORTLY**

---



LOS ANGELES COUNTY  
**REDISTRICTING**  
2021







**Public Comment: 1 Minute**

Time Remaining





# Public Comment: 2 Minutes

Time Remaining





# LOS ANGELES COUNTY REDISTRICTING 2021

## Public Comment: 3 Minutes

Time Remaining





# Times Up! Wrap Up

