

# Citizens Redistricting Commission (CRC) Meeting

## LIVE STREAM WILL BEGIN SHORTLY

<https://www.youtube.com/LACountyRedistricting/>



LOS ANGELES COUNTY  
**REDISTRICTING**  
2021





LOS ANGELES COUNTY  
**REDISTRICTING 2021**

# Los Angeles County Citizens Redistricting Commission (CRC)

Regular Meeting: October 27, 2021





# 1. Call to Order



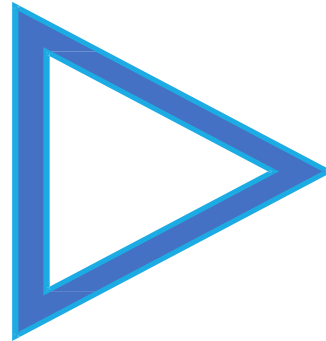
# Notice

This meeting is being recorded and will be posted on LA County CRC website:

<https://redistricting.lacounty.gov>

This meeting is streaming live at:

<https://www.youtube.com/LACountyRedistricting/>



**During the CRC meeting, if you need technical assistance,  
use the Q&A button at the bottom of your Zoom Webinar screen.**

**Thai Le, LA County CRC Clerk, can assist you.**





## 2. Roll Call

Commissioner Jean Franklin

Commissioner David Holtzman

Commissioner Mary Kenney

Co-Chair Daniel Mayeda

Commissioner Mark Mendoza

Commissioner Apolonio Morales

Commissioner Nelson Obregon

Commissioner Priscilla Orpinela-Segura

Commissioner Hailes Soto

Commissioner Saira Soto

Commissioner Brian Stecher

Commissioner John Vento

Co-Chair Carolyn Williams

Commissioner Doreena Wong



# 3. Approval of Agenda

## Co-Chair Carolyn Williams





## 4. General Public Comments

The public can make general public comments at this time at a regular meeting.

The public can later make oral comments on other Agenda items.

The public can also submit written comments on Agenda items at:  
<https://publiccomment.redistricting.lacounty.gov/>





# How to Make Public Comment

*Type your name and affiliation/organization into QA  
if you want to make a Public Comment.*

*If on a phone line, press \*9 to raise your hand.  
Once called upon, press \*6 to unmute and speak.*

***Each Person Gets 1 Minute unless the Co-Chairs determine otherwise.***

***Each person only gets 1 opportunity to speak.***

When you speak, share your name and affiliation at the beginning.

You can also submit written comments on Agenda items at:

<https://publiccomment.redistricting.lacounty.gov/>





## **5. Action/ Discussion Items**

**5a. Update and Discussion of Maps Submitted by the public and LA CRC Commissioners, Including Potentially Requesting Drafters of Certain Maps to Present at Future Meeting(s) and Hearing Presentations from Map Drafters Invited Earlier— Co-Chair Dan Mayeda**

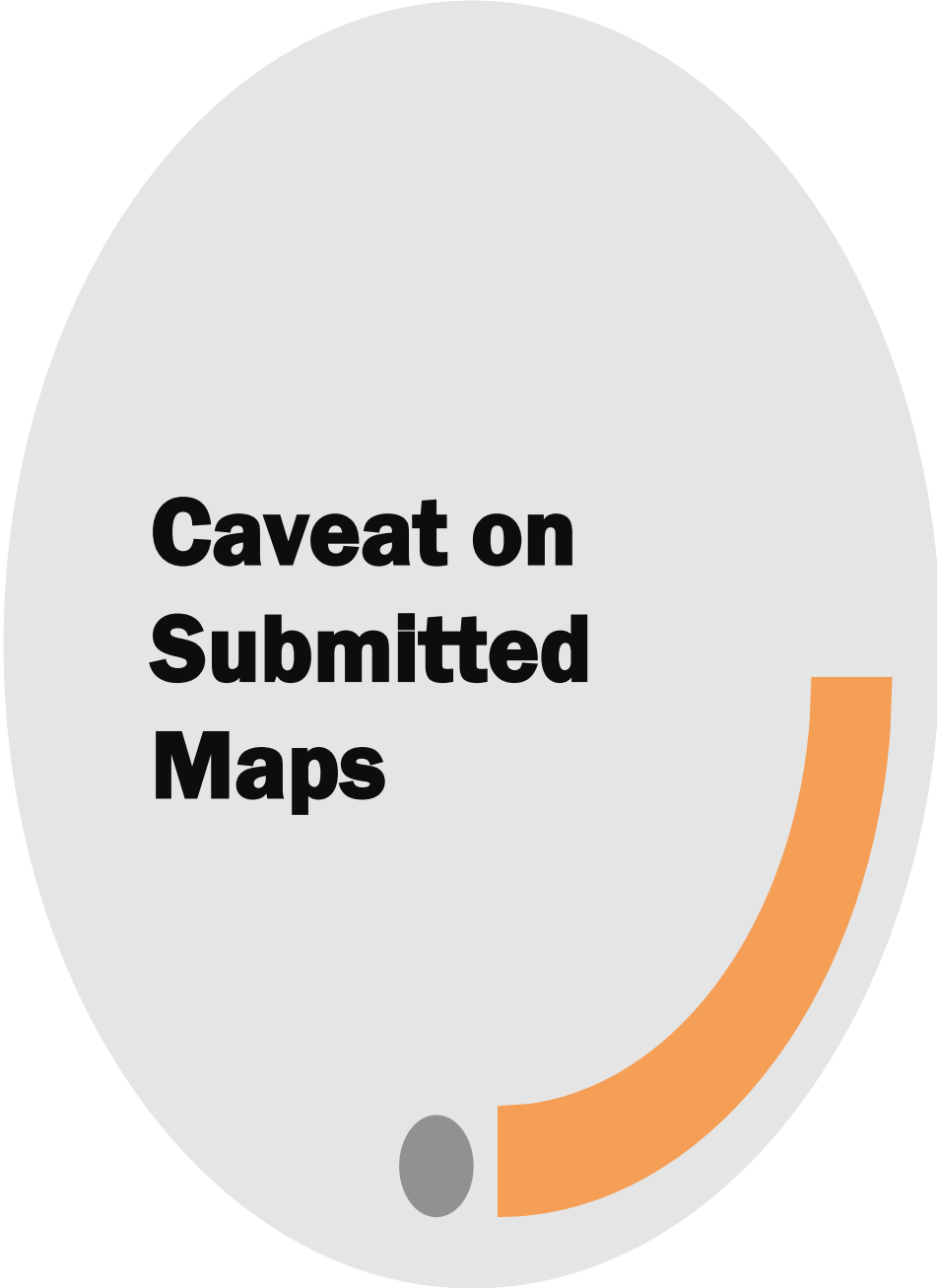
**5b. Discussion and Possible Approval of Draft Maps and/or Direction to ARCBridge to Develop Draft Maps for Upcoming Public Hearings—Co-Chairs Carolyn Williams and Dan Mayeda**

**5c. Continued discussion relevant bylaws and possible approval of a bylaws amendment or a media policy for the LA County CRC — Co-Chair Dan Mayeda**

**REMINDER:**

We do not know if the supervisorial districts are intentionally or arbitrarily numbered.

The numbering system for the supervisorial districts may or may not reflect the final assigned supervisorial district numbers adopted.



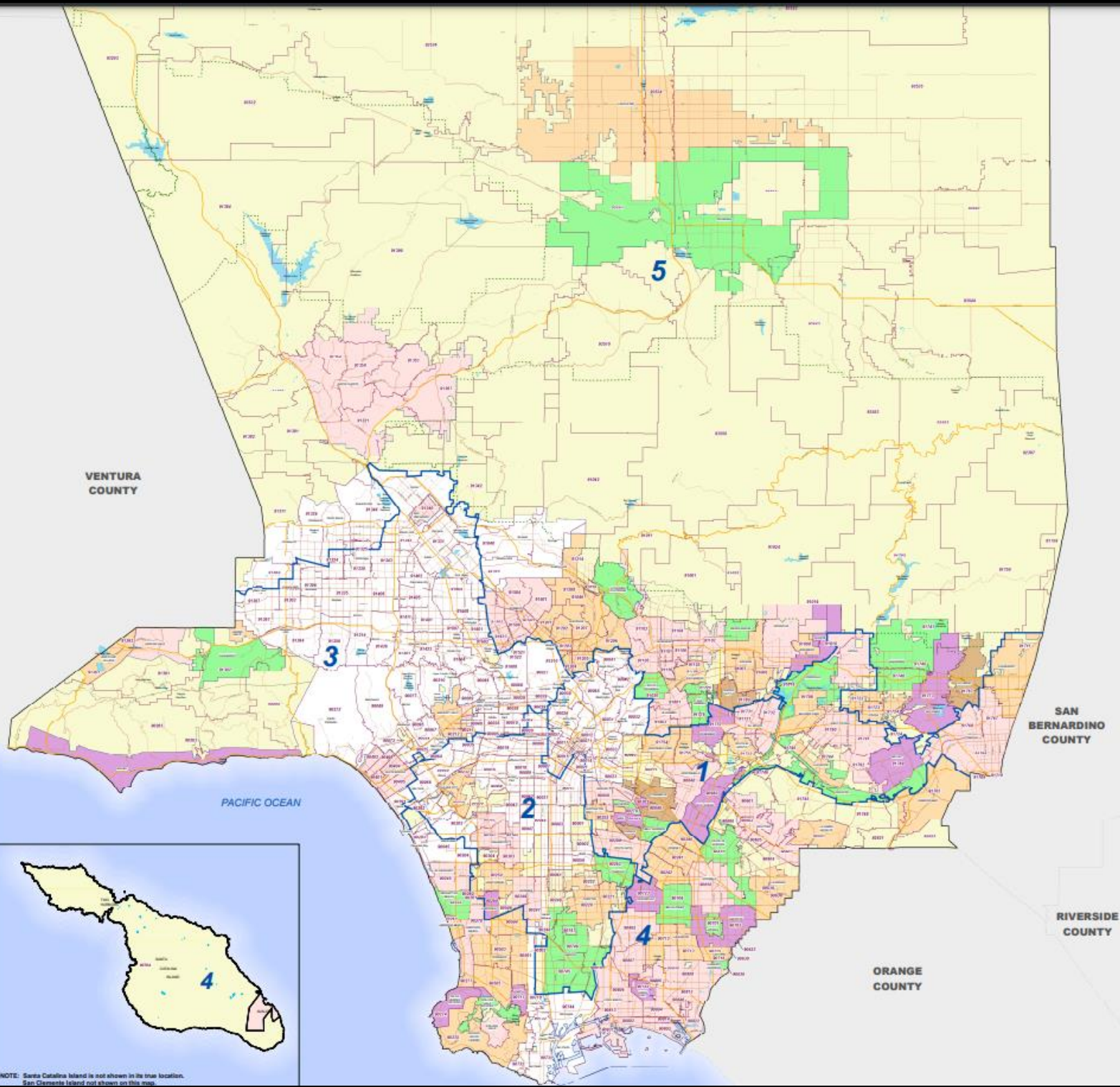
**Caveat on  
Submitted  
Maps**

# Cities and ZIP Codes

January 2019

### LEGEND:

- Supervisory District Boundary
- Arterials
- Highways
- Freeway
- National Forest Boundary
- ZIP Code Boundary
- Incorporated City
- Unincorporated Area
- Water Body



LOS ANGELES COUNTY  
Department of Regional Planning  
225 W. Temple St.  
Los Angeles, CA 90012

Scale: 0 1 2 Miles

DATE: 01/2019



## Reminder: Total Population, CVAP, and VAP

- Total population is used to create districts.
- Citizens Voter Age Population (CVAP) and Voter Age Population (VAP) are used to understand the actual VAP in the County.
- CVAP is used for VRA purposes.
  - For example: By not considering CVAP, you could create a majority Latinx district that has less than 50% Latinx voters.



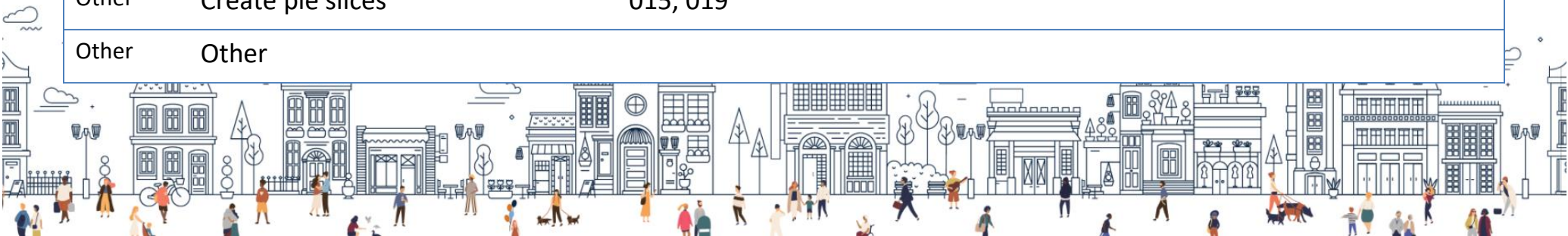
## Reminder: Mapping Criteria and Considerations

1. Establish reasonably equal population (deviation %)
2. VRA compliance
  - a) Percentages related to total population, CVAP, and VAP
  - b) Pass/Fail, based on Bruce Adelson, Esq., and Dr. Jonathan Katz's evaluation of the narrowed list of options
3. Connect all parts of a district (geographic contiguity) : minimal splitting of cities, NCs, unincorporated areas, and COIs
4. Preserve geographic integrity of cities, neighborhoods, and communities of interest
5. Don't bypass nearby populations in drawing districts (compactness)
6. Can't favor or disfavor current incumbents or political parties



# Commissioner Brian Stecher's Proposed Map Groupings for Discussion

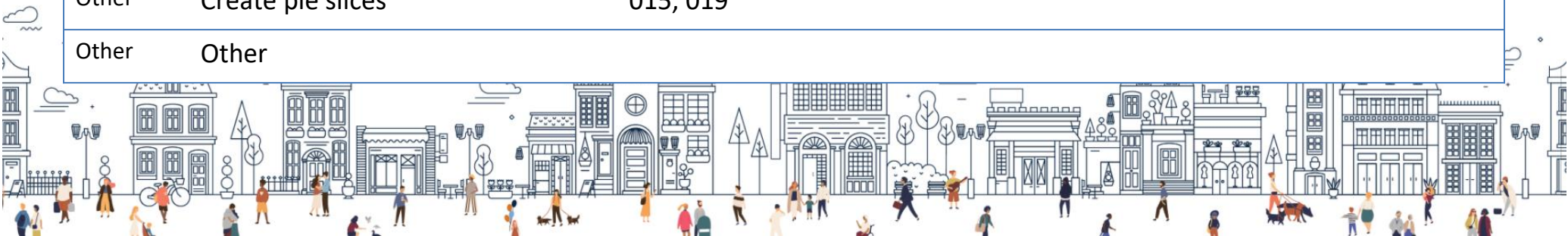
Geographic Features		Map ID Number
SFV	Keep SFV together	003, 004, 005, 008, 010, 011, 012, 016, 017, 018, 025, 026, 027
SFV	Divide SGV	All other maps except 001, 003, 005, 012, 014, 016, 017, 018, 020, 021, 022, 025, 026, 027
SGV	Keep SGV together	001, 003, 005, 012, 014, 016, 017, 018, 020, 021, 022, 025, 026, 027
SGV	Divide SFV (some designed for greater Latinx representation)	All other maps except 001, 003, 005, 012, 014, 016, 017, 018, 020, 021, 022, 025, 026, 027
S Cen	Keep South Central together	004, 008, 011, 012, 014, 016, 018, 020, 021, 022, 023, 025, 026
Coast	Keep Coastline together	004, 005, 007, 008, 012, 014, 016, 018, 023, 025, 026
North	Divide North County	001, 006, 009, 020, 021
North	Keep North County together	All other maps except 001, 006, 009, 020, 021
Other	Create diagonal, central Latino district	002, 005, 006, 007, 023
Other	Create pie slices	015, 019
Other	Other	





# Commissioner Brian Stecher's Proposed Map Groupings for Discussion

Geographic Features		Map ID Number
SFV	Keep SFV together	003, 004, 005, 008, 010, 011, 012, 016, 017, 018, 025, 026, 027
SFV	Divide SGV	All other maps except 001, 003, 005, 012, 014, 016, 017, 018, 020, 021, 022, 025, 026, 027
SGV	Keep SGV together	001, 003, 005, 012, 014, 016, 017, 018, 020, 021, 022, 025, 026, 027
SGV	Divide SFV (some designed for greater Latinx representation)	All other maps except 001, 003, 005, 012, 014, 016, 017, 018, 020, 021, 022, 025, 026, 027
S Cen	Keep South Central together	004, 008, 011, 012, 014, 016, 018, 020, 021, 022, 023, 025, 026
Coast	Keep Coastline together	004, 005, 007, 008, 012, 014, 016, 018, 023, 025, 026
North	Divide North County	001, 006, 009, 020, 021
North	Keep North County together	All other maps except 001, 006, 009, 020, 021
Other	Create diagonal, central Latino district	002, 005, 006, 007, 023
Other	Create pie slices	015, 019
Other	Other	





# Commissioner Brian Stecher's Proposed Map Groupings for Discussion

Geographic Features	Plan ID Number
Keep SFV together [all other plans split SFV]	003, 004, 005, 008, 010, 011, 012, 016, 017, 018, 025, 026, 027
Keep SGV together [all other plans split SGV]	001, 003, 005, 012, 014, 016, 017, 018, 020, 021, 022, 025, 026, 027
Keep So Central together [all other plans split So Central]	004, 008, 011, 012, 014, 016, 018, 020, 021, 022, 023, 025, 026
Keep Coastline together [all other plans split Coastline]	004, 005, 007, 008, 012, 014, 016, 018, 023, 025, 026
Create diagonal, central Latino district [no other plans do this]	002, 005, 006, 007, 023
Divide North County [all other plans keep North County together]	001, 006, 009, 020, 021
Create pie slices [no other plans do this]	015, 019

Note: Other possible major geographic features not analyzed include:

- Keep foothill communities from SGV and/or SFV with North County
- Keep Burbank, Glendale, and Pasadena together
- Others







# Possible Next Steps for Tomorrow Night

1. Be prepared to attend tomorrow's meeting with a list of your top 3 maps to suggest the Commission focus on
2. Each Commissioner will present their choices in real-time and round-robin format
3. Gayla Kraetsch Hartsough will record Commissioners' choices on a spreadsheet on the screen
4. Review the chart on the screen and see which maps for which there is a clear consensus to consider focusing on for further discussion/debate
5. Other considerations:
  - a) Does the Commission want to make one of the map options be a tweaked status quo? Or direct ARCBridge to prepare such a map (e.g., modified status quo), based on COI input?
  - b) Does the Commission want to select the best map option(s) based on Commissioner Stecher's groupings? (For example: Does the Commission want to make one of the draft maps a "keep the SFV whole" option?)
  - c) What else should the Commission consider?



## **5. Action/ Discussion Items**

5a. Update and Discussion of Maps Submitted by the public and LA CRC Commissioners, Including Potentially Requesting Drafters of Certain Maps to Present at Future Meeting(s) and Hearing Presentations from Map Drafters Invited Earlier— Co-Chair Dan Mayeda

5b. Discussion and Possible Approval of Draft Maps and/or Direction to ARCBridge to Develop Draft Maps for Upcoming Public Hearings—Co-Chairs Carolyn Williams and Dan Mayeda

5c. Continued discussion relevant bylaws and possible approval of a bylaws amendment or a media policy for the LA County CRC — Co-Chair Dan Mayeda



# Bylaws Section 4.04

## Article IV. Rules of Membership

**Section 4.04 Conduct.** Commissioners shall conduct themselves in a manner that **reinforces public confidence in the integrity of the redistricting process** and shall apply Elections Code sections 21530 - 21535 in an impartial manner. (Elections Code section 21533, subd. (a).)





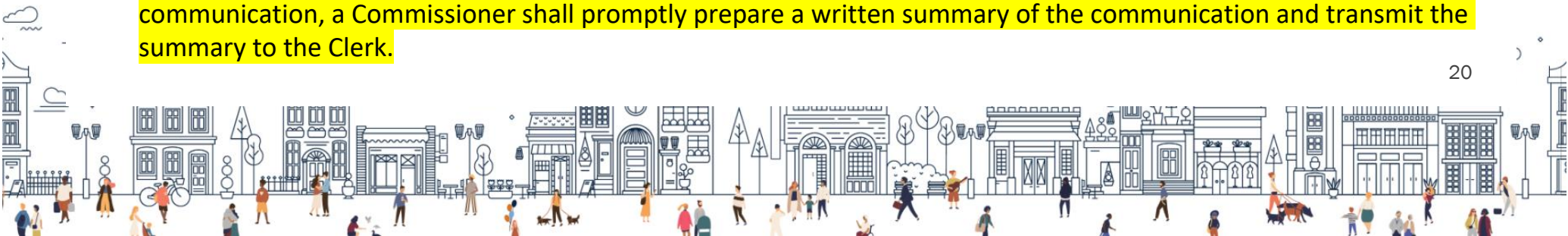
# Bylaws Section 4.08 Communications

**b) Representing the Commission.** The Co-Chairs are the only official spokespersons for the Commission **unless this responsibility is delegated in writing by the Co-Chairs** or by a vote of nine (9) Commissioners. Except as provided in this paragraph, **no Commissioner shall make any statement or take any action taken on behalf of or in the name of the Commission.** This does not prevent Commissioners from disseminating information in the name of the Commission regarding the time, place, or agendas of upcoming Commission meetings or hearings.

## c) Communications Outside of Open Meetings or Hearings.

**c.2) Prohibition Regarding All Other Parties.** Except during a public meeting, workshop or hearing, **a Commissioner shall not intentionally communicate with a member of the public, organization, or interest group regarding the specific placement or predictions of supervisory district boundaries in Los Angeles County.** A commissioner shall promptly summarize and report any such communication that arises unintentionally to the Clerk of the Commission. Nothing in this subsection shall be construed as prohibiting a Commissioner from communicating outside of a public meeting, workshop or hearing with a member of the public, an organization, or an interest group regarding best practices, accessibility, education, and outreach.

**c.3) Reporting Requirement for Other Communications.** Except during a public meeting, workshop, or hearing, if a Commissioner directly communicates with anyone other than another Commissioner, LA County CRC staff, legal counsel, consultants retained by the Commission or experts to learn about general redistricting principles, regarding a redistricting matter that might come before the Commission other than the specific placement of district boundaries (which is covered in subparagraph (2) above), the **Commissioner shall promptly forward originals or copies of all involved written or electronic communications to the Clerk of the Commission.** For unrecorded verbal or other communication, a Commissioner shall promptly prepare a written summary of the communication and transmit the summary to the Clerk.





## **Bylaws Section 4.08 Communications (cont'd)**

**(c)(5) Log of Communications.** The Clerk of the Commission shall keep and post on a Commission-approved website a log of all substantive communications regarding redistricting or administrative matters received by the Commission or Commissioners outside of public meetings or hearings. This log shall include at least the following: the name of the person or organization communicated with, date of communication, and a general description of where the communication or a summary thereof can be located on a Commission-approved website.

**e) Internet/Social Media.** Commissioners should keep in mind the provisions of Section 4.04 and are encouraged to use caution when communicating about redistricting on any internet platform or social media website, including the use of any digital icons that express emotion.

**PROPOSED DRAFT REVISED MEDIA POLICY LANGUAGE – see next slide**



## 6. Action/Discussion Items (cont'd)

### CURRENT BYLAW LANGUAGE

e) **Internet/Social Media.** Commissioners should keep in mind the provisions of Section 4.04 and are encouraged to use caution when communicating about redistricting on any internet platform or social media website, including the use of any digital icons that express emotion.

### PROPOSED DRAFT REVISED MEDIA POLICY LANGUAGE

e) ~~Internet/Social Media-Media.~~ Commissioners should keep in mind the provisions of Section 4.04 and are encouraged to use caution when communicating about redistricting on ~~any internet platform or social media website, including the use of any digital icons that express emotion.~~ **all media platforms. Non-interactive media examples are television, newspapers, magazines, and radio. Particular caution should be exercised in the use of interactive media, such as social media, virtual reality, electronic newspapers, electronic newsletters and bulletins, blogs, and apps, including the use of any digital icons that express emotion.**





# 6. Executive Director Report

Gayla Kraetsch Hartsough, Ph.D.

# Timeline

Commission draws its map options  
Must post for 7 days before public hearings

Final maps



At least 2 public hearings 30 days apart  
Plan on public hearings every Wednesday at 7p





## NEXT LA COUNTY CRC MEETINGS

- LA County CRC meeting/public hearings every Wednesday evening (except before Thanksgiving) up until December 15
- Special and regular meetings at 6:30 on October 26, 27, and 28 to identify map options for notification and public hearings in November



October LA County CRC Meetings

Scheduled to be virtual as per the Commission's approved  
Resolution No. 2021-01



# **Spanish Interpreters for Public Hearings**

Although we have not received any requests for interpreters, suggest that we arrange for Spanish interpreters for the upcoming public hearings.

# Adjournment

Co-Chair Daniel Mayeda

To learn about the LA County CRC, sign up at:  
<https://redistricting.lacounty.gov/>

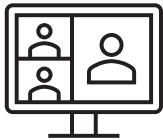




Sign up and stay informed: <https://redistricting.lacounty.gov>



**October meetings will only be virtual.** If we offer hybrid formats in the future, attendance in person in keeping with COVID-19 health safety protocols – **masks required**



Attend and participate virtually in CRC meetings and public hearings:  
<https://us02web.zoom.us/j/82726060927>



Listen only to CRC meetings and public hearings by calling:  
(669) 900-9128, enter: 827 2606 0927#



View CRC meetings and public hearings on YouTube:  
<https://www.youtube.com/LACountyRedistricting/>



Submit written comments via:  
<https://publiccomment.redistricting.lacounty.gov/>  
By mail: Los Angeles County CRC, P.O. Box 56447, Sherman Oaks, CA 91413



## LA County CRC Resource Support

### Staff

Gayla Kraetsch Hartsough, Ph.D.  
LA County CRC Executive Director  
President, KH Consulting Group  
Associate Adjunct Faculty, University of Southern California  
[ghartsough@crc.lacounty.gov](mailto:ghartsough@crc.lacounty.gov)

Thai V. Le  
LA County CRC Clerk  
Consultant, KH Consulting Group  
Doctoral Candidate, University of Southern California  
GIS, Public Policy, and Technical Support  
[tle@crc.lacounty.gov](mailto:tle@crc.lacounty.gov)

### Subject Matter Experts

Carlos De Alba, Marketing, Media, and Outreach Consultant

Priti Mathur, ARCBridge  
Demographic Analysis and ESRI Mapping Software

Bruce Adelson, Esq., Federal Compliance Consulting LLC  
Professor Jonathan N. Katz, Ph.D., Caltech  
Racially Polarized Voting Analysis

### Independent Legal Counsel

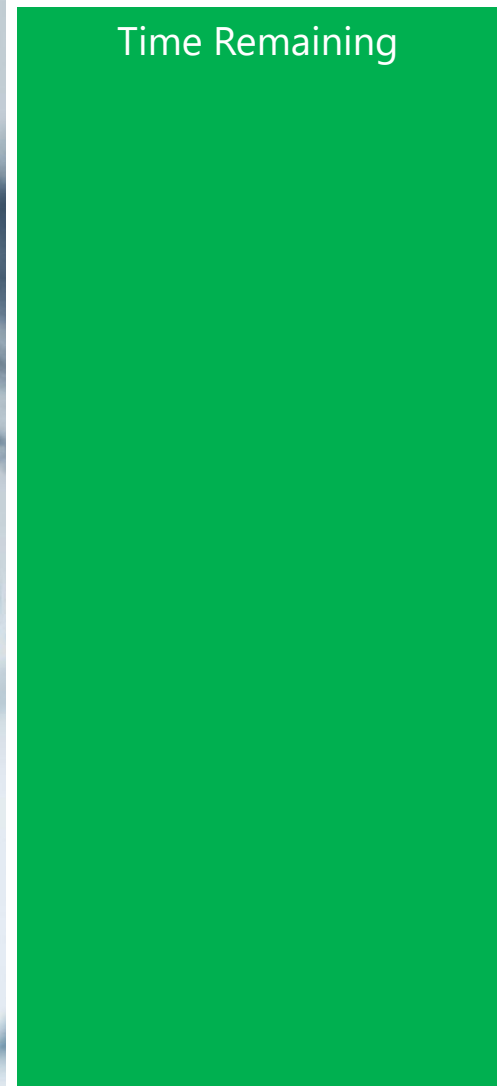
Holly O. Whatley, Esq., Shareholder  
Aleks R. Giragosian, Esq., Senior Counsel  
Pamela Graham, Esq., Senior Counsel

Colantuono, Highsmith & Whatley, PC 790 E.  
Colorado Blvd., Suite 850  
Pasadena, CA 91101-2109  
(213) 542-5700 tel  
(213) 542-5710 fax  
[hwhatley@chwlaw.us](mailto:hwhatley@chwlaw.us)



**Public Comment: 1 Minute**

Time Remaining





# Public Comment: 2 Minutes

Time Remaining





# LOS ANGELES COUNTY REDISTRICTING 2021

## Public Comment: 3 Minutes

Time Remaining







# Times Up! Wrap Up



# Citizens Redistricting Commission (CRC) Meeting

**\* RECESS \***

**LIVE STREAM WILL RESUME SHORTLY**

---



LOS ANGELES COUNTY  
**REDISTRICTING**  
2021

