

# Citizens Redistricting Commission (CRC) Meeting

## LIVE STREAM WILL BEGIN SHORTLY

<https://www.youtube.com/LACountyRedistricting/>



LOS ANGELES COUNTY  
**REDISTRICTING**  
2021





LOS ANGELES COUNTY  
**REDISTRICTING 2021**

# Los Angeles County Citizens Redistricting Commission (CRC)

Special Meeting: October 26, 2021





# 1. Call to Order



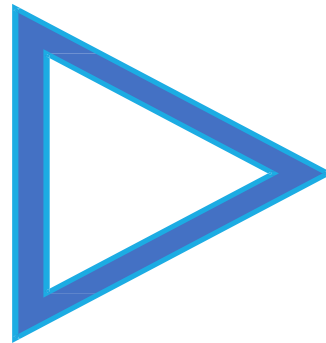
# Notice

This meeting is being recorded and will be posted on LA County CRC website:

<https://redistricting.lacounty.gov>

This meeting is streaming live at:

<https://www.youtube.com/LACountyRedistricting/>



**During the CRC meeting, if you need technical assistance,  
use the Q&A button at the bottom of your Zoom Webinar screen.**

**Thai Le, LA County CRC Clerk, can assist you.**





## 2. Roll Call

Commissioner Jean Franklin

Commissioner David Holtzman

Commissioner Mary Kenney

Co-Chair Daniel Mayeda

Commissioner Mark Mendoza

Commissioner Apolonio Morales

Commissioner Nelson Obregon

Commissioner Priscilla Orpinela-Segura

Commissioner Hailes Soto

Commissioner Saira Soto

Commissioner Brian Stecher

Commissioner John Vento

Co-Chair Carolyn Williams

Commissioner Doreena Wong





# 3. Approval of Agenda

Co-Chair Carolyn Williams





# Public Comments

This a special meeting so there will be no general public comments.

The public can make oral comments on Agenda items.

The public can also submit written comments on Agenda items at:

<https://publiccomment.redistricting.lacounty.gov/>





# How to Make Public Comment

*Type your name and affiliation/organization into QA  
if you want to make a Public Comment.*

*If on a phone line, press \*9 to raise your hand.  
Once called upon, press \*6 to unmute and speak.*

***Each Person Gets 1 Minute unless the Co-Chairs determine otherwise.***

***Each person only gets 1 opportunity to speak.***

When you speak, share your name and affiliation at the beginning.

You can also submit written comments on Agenda items at:

<https://publiccomment.redistricting.lacounty.gov/>





**We do not know if the supervisorial districts are intentionally or arbitrarily numbered.**

**The numbering system for the supervisorial districts may or may not reflect the final assigned supervisorial district numbers adopted.**



# **Caveat on Submitted Maps**

## 4. Action/ Discussion Items

*4a. Update and Discussion of Maps Submitted by the public and LA CRC Commissioners, Including Potentially Requesting Drafters of Certain Maps to Present at Future Meeting(s) — Co-Chair Dan Mayeda*

- Presentation by ARCBridge

*4b. Discussion and Possible Adoption of Map Evaluation Criteria Regarding Draft Maps that 1) Increase to Six Years the Interval Certain Voters Will Have to Wait Before Voting in a Regularly-Scheduled Supervisorial Election and 2) Renumber Districts so That Few or No Voters in the New District Participated in Last Supervisorial Election for that District — Co-Chair Dan Mayeda*

- Staff Report—Holly Whatley, Independent Legal Counsel

*4c. Discussion of Potential Other Criteria for Evaluating Maps — Co-Chair Dan Mayeda*

- Presentation by ARCBridge

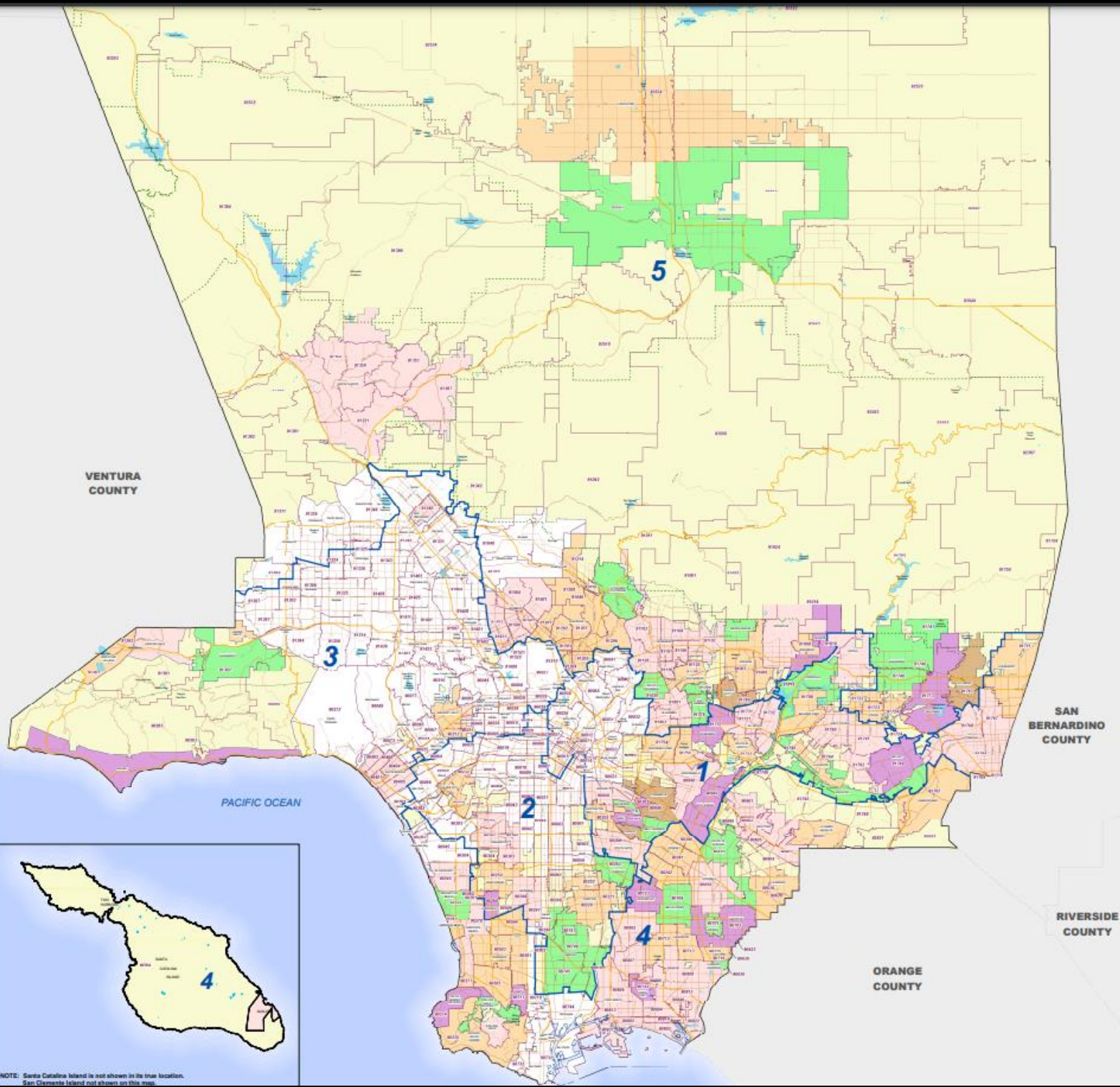
*4d. Discussion and Possible Approval of Draft Maps and/or Direction to ARCBridge to Develop Draft Maps for Upcoming Public Hearings— Co-Chair Dan Mayeda*

# Cities and ZIP Codes

January 2019

### LEGEND:

- Supervisory District Boundary
- Arterials
- Highways
- Freeway
- National Forest Boundary
- ZIP Code Boundary
- Incorporated City
- Unincorporated Area
- Water Body



LOS ANGELES COUNTY  
Department of Regional Planning  
225 W. Temple St.  
Los Angeles, CA 90012

Scale: 0 1 2 Miles

North Arrow

Date Created: 12/2018



4b. Discussion and Possible Adoption of Map Evaluation Criteria Regarding Draft Maps that 1) Increase to Six Years the Interval Certain Voters Will Have to Wait Before Voting in a Regularly-Scheduled Supervisorial Election and 2) Renumber Districts so That Few or No Voters in the New District Participated in Last Supervisorial Election for that District — Co-Chair Dan Mayeda

Supervisorial District (SD)	Last Election	Next Election
1	2018	2022
2	2020	2024
3	2018	2022
4	2020	2024
5	2020	2024





4b. Discussion and Possible Adoption of Map Evaluation Criteria Regarding Draft Maps that 1) Increase to Six Years the Interval Certain Voters Will Have to Wait Before Voting in a Regularly-Scheduled Supervisorial Election and 2) Renumber Districts so That Few or No Voters in the New District Participated in Last Supervisorial Election for that District — Co-Chair Dan Mayeda

David A. Holtzman, M.P.H., J.D.  
Commissioner  
*DHoltzman@crc.lacounty.gov*

**SUGGESTED WAYS TO THINK OF REPRESENTATION, BY TYPE OF AREA**  
(Type of Area Defined by Election Years)

Election Year Last ↓ Next →	2022	2024
2018	<p><b>A: "18&amp;22"</b>  <u>until 2022: rep'd by elected</u>  <u>2022-2024: rep'd by elected</u></p>	<p><b>B: "18&amp;24"</b>  <u>until 2022: rep'd by elected</u>  <u>2022-2024: rep'd by supe elected</u>  in 2022 in nearby/old district, or  by supe elected in 2020 in new  district</p>
2020	<p><b>C: "20&amp;22"</b>  <u>until 2022: rep'd by elected</u>  <u>2022-2024: rep'd by elected</u></p>	<p><b>D: "20&amp;24"</b>  <u>until 2022: rep'd by elected</u>  <u>2022-2024: rep'd by elected</u></p>

*elected = supervisor most recently elected by the district containing the area*

- Type A: "18&22" areas change from current District 1 or 3 to new District 1 or 3*
- Type B: "18&24" areas change from current District 1 or 3 to new District 2, 4 or 5*
- Type C: "20&22" areas change from current District 2, 4 or 5 to new District 1 or 3*
- Type D: "20&24" areas change from current District 2, 4 or 5 to new District 2, 4 or 5*



## ***4c. Discussion of Potential Other Criteria for Evaluating Maps – Co-Chair Dan Mayeda***

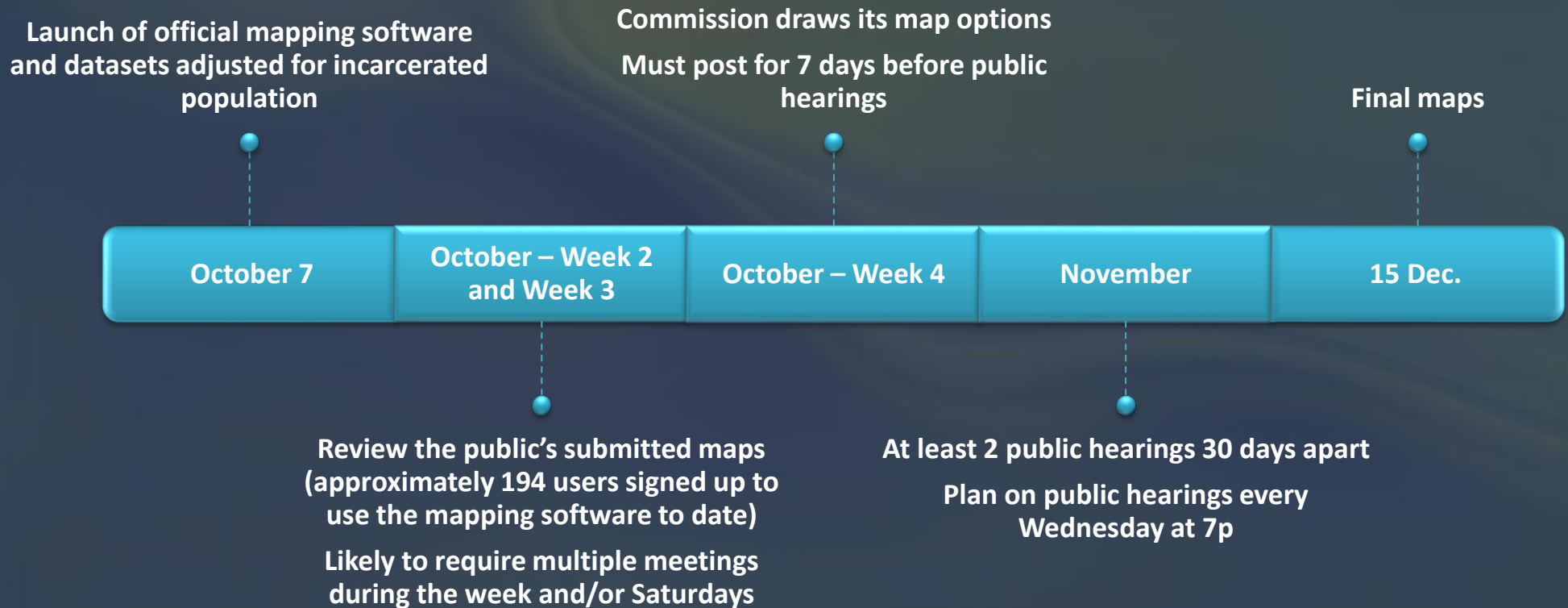
1. Establish reasonably equal population (deviation %)
2. Connect all parts of a district (geographic contiguity)
3. Preserve geographic integrity of cities, neighborhoods, and communities of interest
4. Don't bypass nearby populations in drawing districts (compactness)
5. Minimal splitting of cities, NCs, unincorporated areas, and COIs
6. Ratio of total population:CVAP
7. VRA compliance – Pass/Fail based on Dr. Jonathan Katz's evaluation of the narrowed list of options
8. Other?



# 5. Executive Director Report

Gayla Kraetsch Hartsough, Ph.D.

# Timeline







**November**

# **Commissioners**

Please complete the survey regarding dates for upcoming public hearings



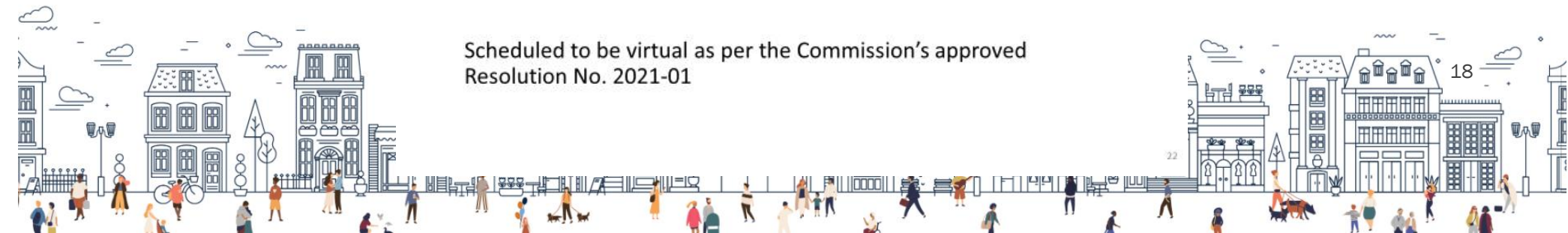
## NEXT LA COUNTY CRC MEETINGS

- LA County CRC meeting every Wednesday evening (except before Thanksgiving) up until December 15
- Special and regular meetings at 6:30 on October 26, 27, and 28 to identify map options for notification and public hearings in November



October LA County CRC Meetings

Scheduled to be virtual as per the Commission's approved  
Resolution No. 2021-01



# Adjournment

Co-Chair Daniel Mayeda

To learn about the LA County CRC, sign up at:  
<https://redistricting.lacounty.gov/>

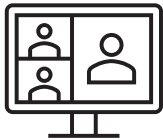




Sign up and stay informed: <https://redistricting.lacounty.gov>



**October meetings will only be virtual.** If we offer hybrid formats in the future, attendance in person in keeping with COVID-19 health safety protocols – **masks required**



Attend and participate virtually in CRC meetings and public hearings:  
<https://us02web.zoom.us/j/82726060927>



Listen only to CRC meetings and public hearings by calling:  
(669) 900-9128, enter: 827 2606 0927#



View CRC meetings and public hearings on YouTube:  
<https://www.youtube.com/LACountyRedistricting/>



Submit written comments via:

<https://publiccomment.redistricting.lacounty.gov/>

By mail: Los Angeles County CRC, P.O. Box 56447, Sherman Oaks, CA 91413



## LA County CRC Resource Support

### Staff

Gayla Kraetsch Hartsough, Ph.D.  
LA County CRC Executive Director  
President, KH Consulting Group  
Associate Adjunct Faculty, University of Southern California  
[ghartsough@crc.lacounty.gov](mailto:ghartsough@crc.lacounty.gov)

Thai V. Le  
LA County CRC Clerk  
Consultant, KH Consulting Group  
Doctoral Candidate, University of Southern California  
GIS, Public Policy, and Technical Support  
[tle@crc.lacounty.gov](mailto:tle@crc.lacounty.gov)

### Subject Matter Experts

Carlos De Alba, Marketing, Media, and Outreach Consultant

Priti Mathur, ARCBridge  
Demographic Analysis and ESRI Mapping Software

Bruce Adelson, Esq., Federal Compliance Consulting LLC  
Professor Jonathan N. Katz, Ph.D., Caltech  
Racially Polarized Voting Analysis

### Independent Legal Counsel

Holly O. Whatley, Esq., Shareholder  
Aleks R. Giragosian, Esq., Senior Counsel  
Pamela Graham, Esq., Senior Counsel

Colantuono, Highsmith & Whatley, PC 790 E.  
Colorado Blvd., Suite 850  
Pasadena, CA 91101-2109  
(213) 542-5700 tel  
(213) 542-5710 fax  
[hwhatley@chwlaw.us](mailto:hwhatley@chwlaw.us)



**Public Comment: 1 Minute**

Time Remaining





# Public Comment: 2 Minutes

Time Remaining





# LOS ANGELES COUNTY REDISTRICTING 2021

## Public Comment: 3 Minutes

Time Remaining







# Times Up! Wrap Up



# Citizens Redistricting Commission (CRC) Meeting

**\* RECESS \***

**LIVE STREAM WILL RESUME SHORTLY**

---



LOS ANGELES COUNTY  
**REDISTRICTING**  
2021

