

Citizens Redistricting Commission (CRC) Meeting

LIVE STREAM WILL BEGIN SHORTLY

<https://www.youtube.com/LACountyRedistricting/>



LOS ANGELES COUNTY
REDISTRICTING
2021





LOS ANGELES COUNTY
REDISTRICTING 2021

Los Angeles County Citizens Redistricting Commission (CRC)

Special Meeting: October 26, 2021





1. Call to Order



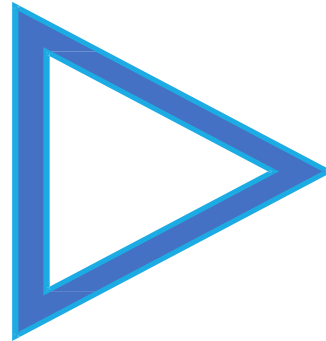
Notice

This meeting is being recorded and will be posted on LA County CRC website:

<https://redistricting.lacounty.gov>

This meeting is streaming live at:

<https://www.youtube.com/LACountyRedistricting/>



**During the CRC meeting, if you need technical assistance,
use the Q&A button at the bottom of your Zoom Webinar screen.**

Thai Le, LA County CRC Clerk, can assist you.





2. Roll Call

Commissioner Jean Franklin

Commissioner David Holtzman

Commissioner Mary Kenney

Co-Chair Daniel Mayeda

Commissioner Mark Mendoza

Commissioner Apolonio Morales

Commissioner Nelson Obregon

Commissioner Priscilla Orpinela-Segura

Commissioner Hailes Soto

Commissioner Saira Soto

Commissioner Brian Stecher

Commissioner John Vento

Co-Chair Carolyn Williams

Commissioner Doreena Wong





3. Approval of Agenda

Co-Chair Carolyn Williams





Public Comments

This a special meeting so there will be no general public comments.

The public can make oral comments on Agenda items.

The public can also submit written comments on Agenda items at:

<https://publiccomment.redistricting.lacounty.gov/>





How to Make Public Comment

*Type your name and affiliation/organization into QA
if you want to make a Public Comment.*

*If on a phone line, press *9 to raise your hand.
Once called upon, press *6 to unmute and speak.*

Each Person Gets 1 Minute unless the Co-Chairs determine otherwise.

Each person only gets 1 opportunity to speak.

When you speak, share your name and affiliation at the beginning.

You can also submit written comments on Agenda items at:

<https://publiccomment.redistricting.lacounty.gov/>



We do not know if the supervisorial districts are intentionally or arbitrarily numbered.

The numbering system for the supervisorial districts may or may not reflect the final assigned supervisorial district numbers adopted.



Caveat on Submitted Maps

4. Action/ Discussion Items

4a. Update and Discussion of Maps Submitted by the public and LA CRC Commissioners, Including Potentially Requesting Drafters of Certain Maps to Present at Future Meeting(s) — Co-Chair Dan Mayeda

- Presentation by ARCBridge

4b. Discussion and Possible Adoption of Map Evaluation Criteria Regarding Draft Maps that 1) Increase to Six Years the Interval Certain Voters Will Have to Wait Before Voting in a Regularly-Scheduled Supervisorial Election and 2) Renumber Districts so That Few or No Voters in the New District Participated in Last Supervisorial Election for that District — Co-Chair Dan Mayeda

- Staff Report—Holly Whatley, Independent Legal Counsel

4c. Discussion of Potential Other Criteria for Evaluating Maps — Co-Chair Dan Mayeda

- Presentation by ARCBridge

4d. Discussion and Possible Approval of Draft Maps and/or Direction to ARCBridge to Develop Draft Maps for Upcoming Public Hearings— Co-Chair Dan Mayeda

4c. Discussion of Potential Other Criteria for Evaluating Maps – Co-Chair Dan Mayeda

1. Establish reasonably equal population (deviation %)
2. Connect all parts of a district (geographic contiguity)
3. Preserve geographic integrity of cities, neighborhoods, and communities of interest
4. Don't bypass nearby populations in drawing districts (compactness)
5. Minimal splitting of cities, NCs, unincorporated areas, and COIs
6. Ratio of total population:CVAP
7. VRA compliance – Pass/Fail based on Dr. Jonathan Katz's evaluation of the narrowed list of options
8. Other?



5. Executive Director Report

Gayla Kraetsch Hartsough, Ph.D.

Timeline





November

Commissioners

Please complete the survey
regarding dates for upcoming public
hearings



NEXT LA COUNTY CRC MEETINGS

- LA County CRC meeting every Wednesday evening (except before Thanksgiving) up until December 15
- Special and regular meetings at 6:30 on October 26, 27, and 28 to identify map options for notification and public hearings in November



October LA County CRC Meetings

Scheduled to be virtual as per the Commission's approved
Resolution No. 2021-01

Adjournment

Co-Chair Daniel Mayeda

To learn about the LA County CRC, sign up at:
<https://redistricting.lacounty.gov/>

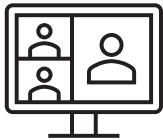




Sign up and stay informed: <https://redistricting.lacounty.gov>



October meetings will only be virtual. If we offer hybrid formats in the future, attendance in person in keeping with COVID-19 health safety protocols – **masks required**



Attend and participate virtually in CRC meetings and public hearings:
<https://us02web.zoom.us/j/82726060927>



Listen only to CRC meetings and public hearings by calling:
(669) 900-9128, enter: 827 2606 0927#



View CRC meetings and public hearings on YouTube:
<https://www.youtube.com/LACountyRedistricting/>



Submit written comments via:
<https://publiccomment.redistricting.lacounty.gov/>
By mail: Los Angeles County CRC, P.O. Box 56447, Sherman Oaks, CA 91413



LA County CRC Resource Support

Staff

Gayla Kraetsch Hartsough, Ph.D.
LA County CRC Executive Director
President, KH Consulting Group
Associate Adjunct Faculty, University of Southern California
ghartsough@crc.lacounty.gov

Thai V. Le
LA County CRC Clerk
Consultant, KH Consulting Group
Doctoral Candidate, University of Southern California
GIS, Public Policy, and Technical Support
tle@crc.lacounty.gov

Subject Matter Experts

Carlos De Alba, Marketing, Media, and Outreach Consultant

Priti Mathur, ARCBridge
Demographic Analysis and ESRI Mapping Software

Bruce Adelson, Esq., Federal Compliance Consulting LLC
Professor Jonathan N. Katz, Ph.D., Caltech
Racially Polarized Voting Analysis

Independent Legal Counsel

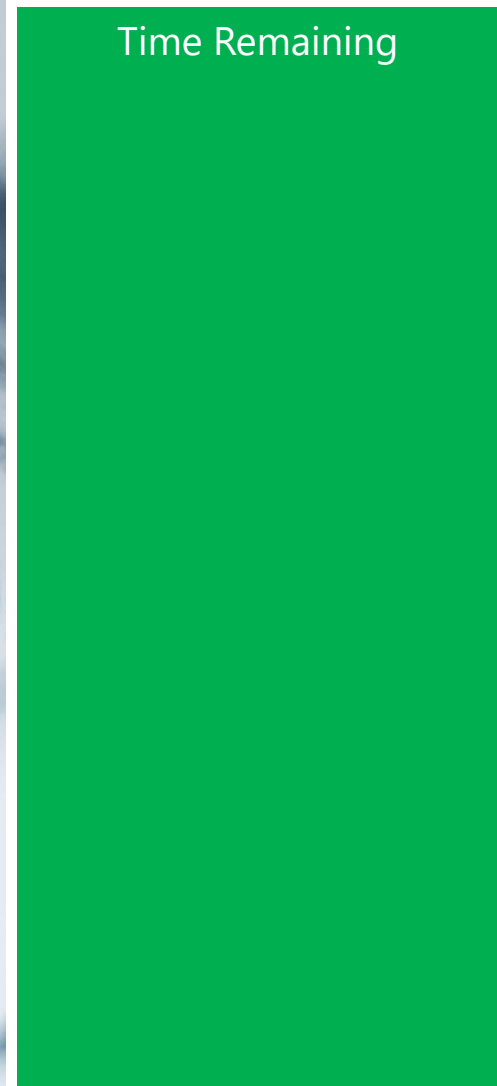
Holly O. Whatley, Esq., Shareholder
Aleks R. Giragosian, Esq., Senior Counsel
Pamela Graham, Esq., Senior Counsel

Colantuono, Highsmith & Whatley, PC 790 E.
Colorado Blvd., Suite 850
Pasadena, CA 91101-2109
(213) 542-5700 tel
(213) 542-5710 fax
hwhatley@chwlaw.us



Public Comment: 1 Minute

Time Remaining





Public Comment: 2 Minutes

Time Remaining





LOS ANGELES COUNTY REDISTRICTING 2021

Public Comment: 3 Minutes

Time Remaining





Times Up! Wrap Up



Citizens Redistricting Commission (CRC) Meeting

*** RECESS ***

LIVE STREAM WILL RESUME SHORTLY



LOS ANGELES COUNTY
REDISTRICTING
2021

