

Citizens Redistricting Commission (CRC) Meeting

LIVE STREAM WILL BEGIN SHORTLY

<https://www.youtube.com/LACountyRedistricting/>



LOS ANGELES COUNTY
REDISTRICTING
2021





LOS ANGELES COUNTY
REDISTRICTING 2021

Los Angeles County Citizens Redistricting Commission (CRC)

Regular Meeting: October 13, 2021





1. Call to Order



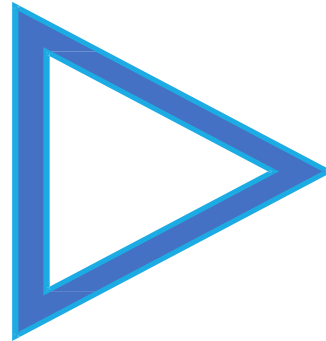
Notice

This meeting is being recorded and will be posted on LA County CRC website:

<https://redistricting.lacounty.gov>

This meeting is streaming live at:

<https://www.youtube.com/LACountyRedistricting/>



**During the CRC meeting, if you need technical assistance,
use the Q&A button at the bottom of your Zoom Webinar screen.**

Thai Le, LA County CRC Clerk, can assist you.





2. Roll Call

Commissioner Jean Franklin

Commissioner David Holtzman

Commissioner Mary Kenney

Co-Chair Daniel Mayeda

Commissioner Mark Mendoza

Commissioner Apolonio Morales

Commissioner Nelson Obregon

Commissioner Priscilla Orpinela-Segura

Commissioner Hailes Soto

Commissioner Saira Soto

Commissioner Brian Stecher

Commissioner John Vento

Co-Chair Carolyn Williams

Commissioner Doreena Wong





3. Approval of Agenda

Co-Chair Carolyn Williams





How to Make Public Comment

*Type your name and affiliation/organization into QA
if you want to make a Public Comment.*

*If on a phone line, press *9 to raise your hand.
Once called upon, press *6 to unmute and speak.*

Each Person Gets 2 Minutes unless the Co-Chairs determine otherwise.

Each person only gets 1 opportunity to speak.

When you speak, share your name and affiliation at the beginning.

You can also submit written comments on Agenda items at:

<https://publiccomment.redistricting.lacounty.gov/>





5. Content Items – Approval of Minutes

Co-Chair Dan Mayeda

- a. Review and take appropriate action on the October 6, 2021, Draft Minutes





6. Action/Discussion Items

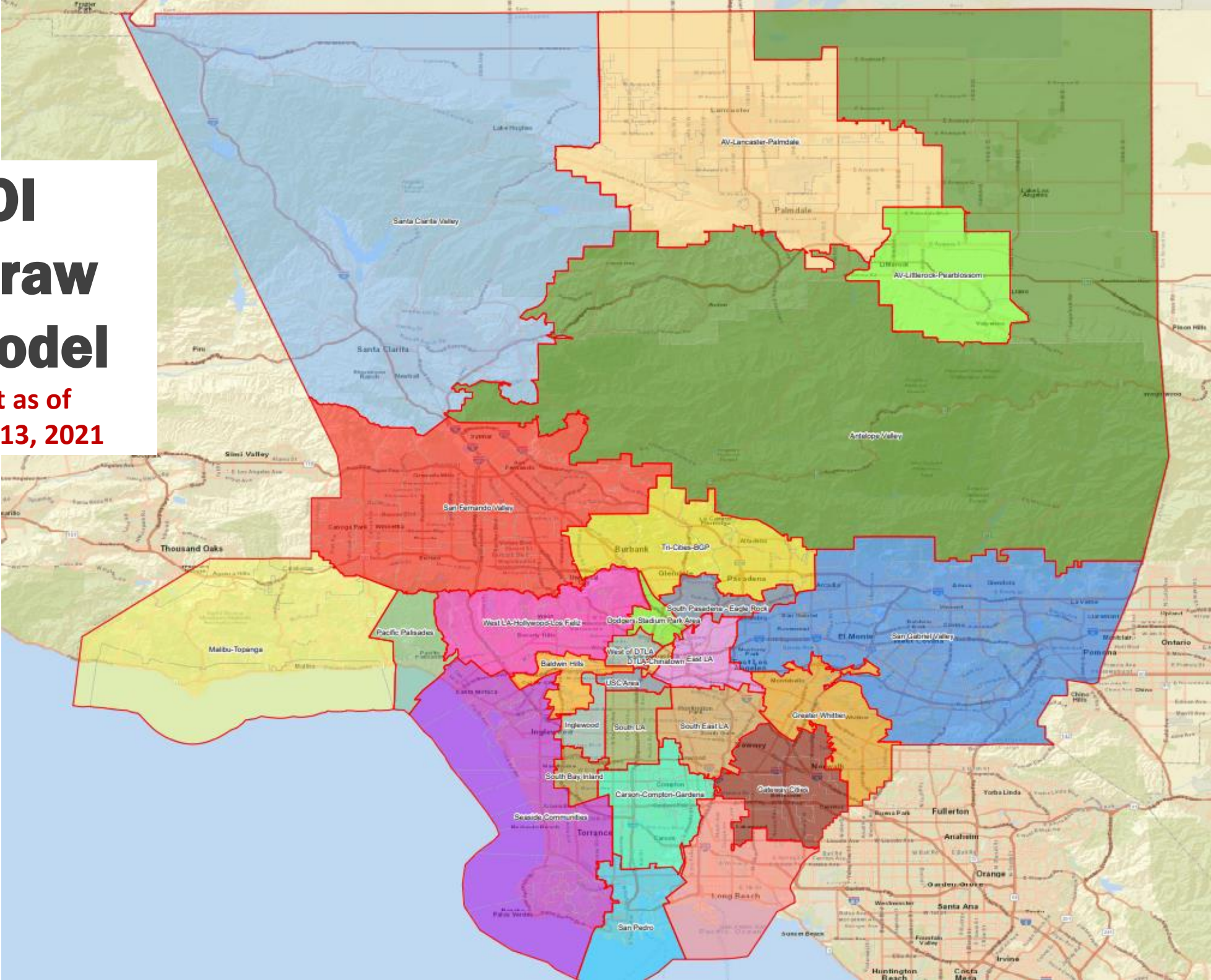
6a. Review and Discussion of Communities of Interest (COIs) maps and possible direction to ARCBridge Regarding Revisions — Co-Chairs Dan Mayeda and Carolyn Williams

- i. Overview by Commissioner Hailes Soto, Leader, Ad Hoc Working Group – Mapping
- ii. Presentation by ARCBridge of COI Maps based on COI Hypotheses



COI Straw Model

Draft as of
Oct. 13, 2021





6. Action/Discussion Items

6b. Review and Discussion of publicly submitted maps and possible direction to ARCBridge about future map considerations — Co-Chairs Dan Mayeda and Carolyn Williams

i. Presentation by ARCBridge

- ARCBridge overview of maps submitted to date
- Timing for posting Commissioner prepared maps options
 - On a real-time basis when submitted
 - October 25 – after the public has had an opportunity to submit but before the Commissions selects map options for public hearings
 - Other





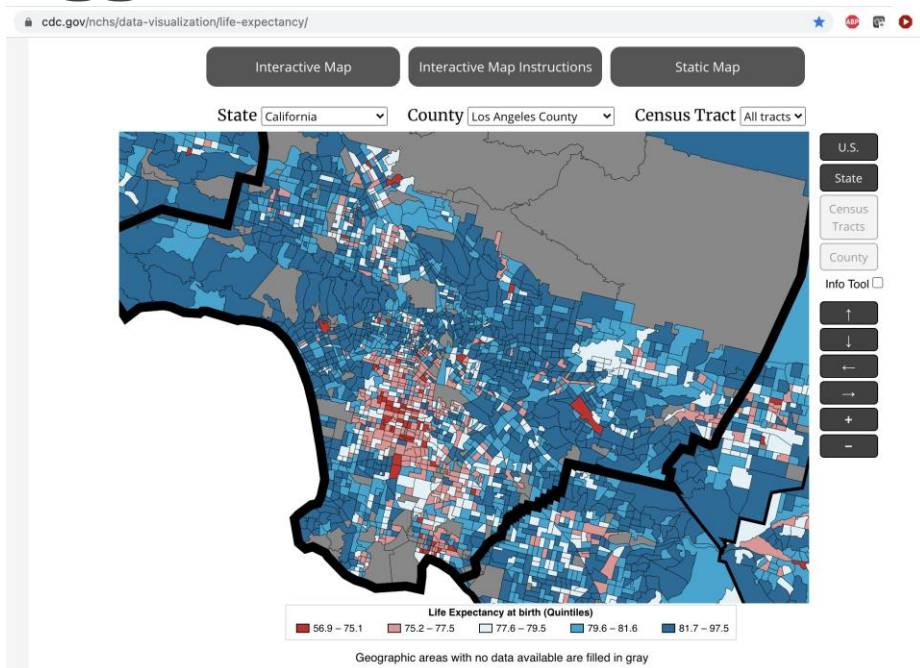
6. Action/Discussion Items (cont'd)

6c. Discussion and Possible Direction to Staff regarding posting on the LA County CRC website additional published datasets for the public's use in mapping beyond the required sets in the mapping software — Co-Chair Carolyn Williams

- i. Review of requests submitted by the public to date – Gayla Kraetsch Hartsough, Executive Director, and Thai V. Le, Clerk and GIS/Technical Staff
 - LA County CRC guidance
 - Criteria for posting (e.g., published data from governmental agencies, universities, non-partisan nonprofit organizations)
 - Criteria for not posting (e.g., partisan organizations)



Public and Commissioner Suggested Data Sets



- CalEnviroScreen (CES):
 - <https://oehha.ca.gov/calenviroscreen/report/draft-calenviroscreen-40>
 - CES scores and other data, by census tract: <https://oehha.ca.gov/calenviroscreen/maps-data/download-data> (for the current official version, 3.0, 2018)
 - <https://oehha.ca.gov/calenviroscreen/report/draft-calenviroscreen-40> (for the current draft, CalEnviroScreen 4.0; public comment period closed on May 14, 2021)
- AFFH for housing (e.g., housing precarity) <https://affh-data-resources-cahcd.hub.arcgis.com/>
- AFFH Supplementary data about flood plains because of climate change
- CDC life expectancy at birth data (e.g., impact on communities affected by lead acid battery smelters, air pollution, etc.) <https://www.naphsis.org/usaleep>





7. Executive Director Report

Gayla Kraetsch Hartsough, Ph.D.



LOS ANGELES COUNTY REDISTRICTING 2021



Press Conference

October 7, 2021, at 11:00 a.m.



Timeline



Mapping Updates



LOS ANGELES COUNTY
REDISTRICTING 2021

Tomorrow, Thursday, October 14, 2021, at 11:00 am: ARCBridge training on mapping software in English

Last Friday, October 8, 2021: Mapping software training in Spanish – recording available on:

- YouTube
- LA Count CRC website

Report on impact of adjusted U.S. Census data for the incarcerated population posted on LA County CRC website: <https://redistricting.lacounty.gov/wp-content/uploads/2021/10/LA-County-CRC-Press-Kit-211007-v3-all.pdf> (pages 4-7)





8. NEXT SPECIAL MEETING (TO BE DETERMINED) – Co-Chair Carolyn Williams

- Plan on LA County CRC meeting every Wednesday evening up until December 15
- Plan on special meetings at 7:00 pm for October 26, 27, and 28 to identify map options for notification and public hearings in November

October LA County CRC Meetings

Scheduled to be virtual as per the Commission's approved
Resolution No. 2021-01

Adjournment

Co-Chair Daniel Mayeda

To learn about the LA County CRC, sign up at:
<https://redistricting.lacounty.gov/>

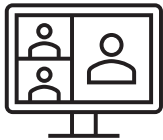




Sign up and stay informed: <https://redistricting.lacounty.gov>



October meetings will only be virtual. If we offer hybrid formats in the future, attendance in person in keeping with COVID-19 health safety protocols – **masks required**



Attend and participate virtually in CRC meetings and public hearings:
<https://us02web.zoom.us/j/82726060927>



Listen only to CRC meetings and public hearings by calling:
(669) 900-9128, enter: 827 2606 0927#



View CRC meetings and public hearings on YouTube:
<https://www.youtube.com/LACountyRedistricting/>



Submit written comments via:

<https://publiccomment.redistricting.lacounty.gov/>

By mail: Los Angeles County CRC, P.O. Box 56447, Sherman Oaks, CA 91413



LA County CRC Resource Support

Staff

Gayla Kraetsch Hartsough, Ph.D.
LA County CRC Executive Director
President, KH Consulting Group
Associate Adjunct Faculty, University of Southern California
ghartsough@crc.lacounty.gov

Thai V. Le
LA County CRC Clerk
Consultant, KH Consulting Group
Doctoral Candidate, University of Southern California
GIS, Public Policy, and Technical Support
tle@crc.lacounty.gov

Subject Matter Experts

Carlos De Alba, Marketing, Media, and Outreach Consultant

Priti Mathur, ARCBridge
Demographic Analysis and ESRI Mapping Software

Bruce Adelson, Esq., Federal Compliance Consulting LLC
Professor Jonathan N. Katz, Ph.D., Caltech
Racially Polarized Voting Analysis

Independent Legal Counsel

Holly O. Whatley, Esq., Shareholder
Aleks R. Giragosian, Esq., Senior Counsel
Pamela Graham, Esq., Senior Counsel

Colantuono, Highsmith & Whatley, PC 790 E.
Colorado Blvd., Suite 850
Pasadena, CA 91101-2109
(213) 542-5700 tel
(213) 542-5710 fax
hwhatley@chwlaw.us



LOS ANGELES COUNTY REDISTRICTING 2021

Public Comment: **1 Minute**

Time Remaining





Public Comment: 2 Minutes

Time Remaining





LOS ANGELES COUNTY REDISTRICTING 2021

Public Comment: 3 Minutes

Time Remaining





Times Up! Wrap Up



Citizens Redistricting Commission (CRC) Meeting

*** RECESS ***

LIVE STREAM WILL RESUME SHORTLY



LOS ANGELES COUNTY
REDISTRICTING
2021

