

Los Angeles County Citizens Redistricting (CRC) Commission



LOS ANGELES COUNTY **REDISTRICTING** 2021





No Public Input Taken Today

This presentation is designed to be educational about the redistricting process.
I can answer questions about the process.

Any input you may have about where to draw the district lines must be shared with the full LA County CRC at our upcoming meetings in October and public hearings in November.

To provide written public input on Agenda Items, please visit our website:
<https://publiccomment.redistricting.lacounty.gov/>

More information at: <http://redistricting.lacounty.gov>





**Submitted maps posted on
LA County CRC website:
[https://redistricting-
lacounty.hub.arcgis.com/](https://redistricting-lacounty.hub.arcgis.com/)**

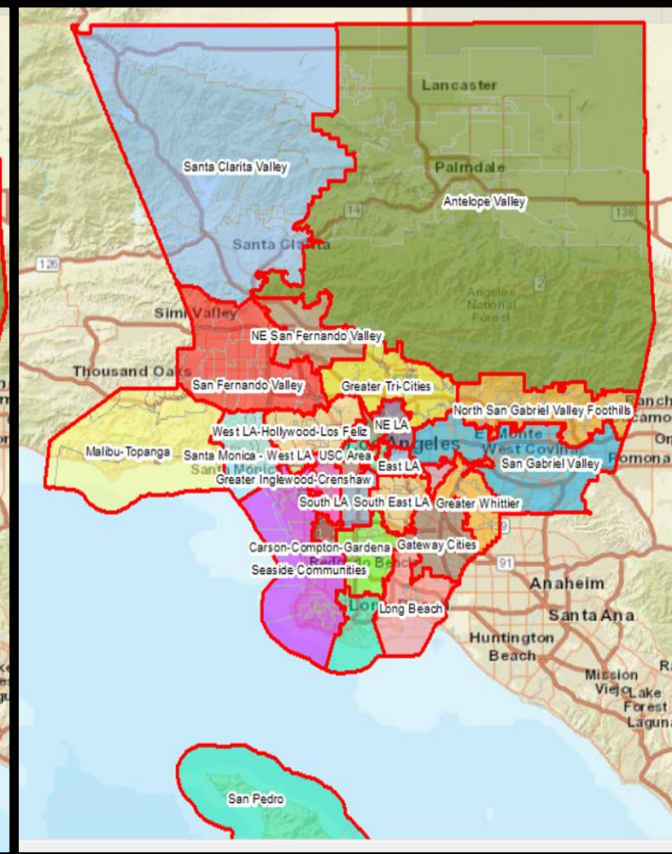
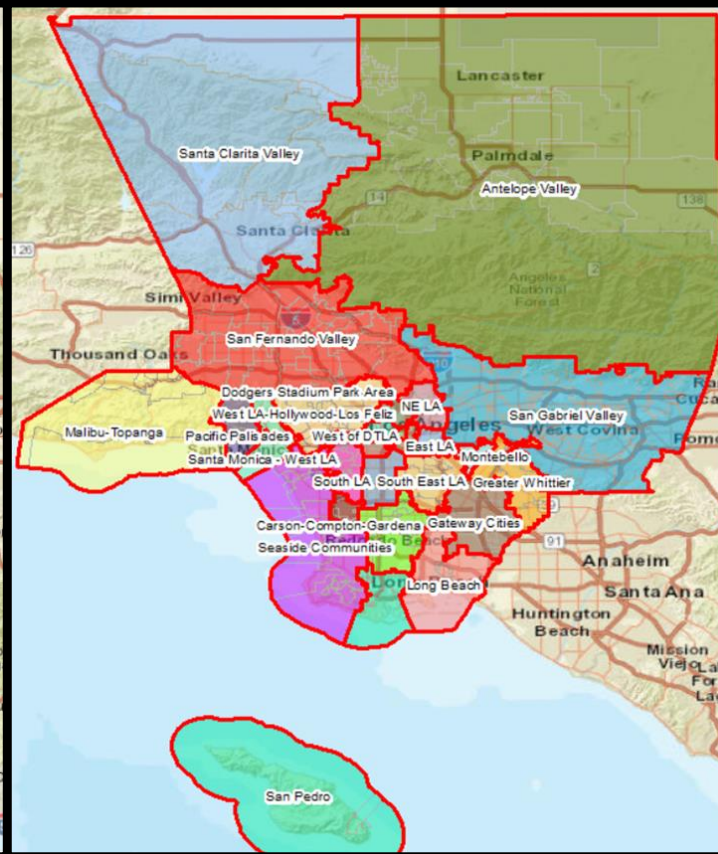
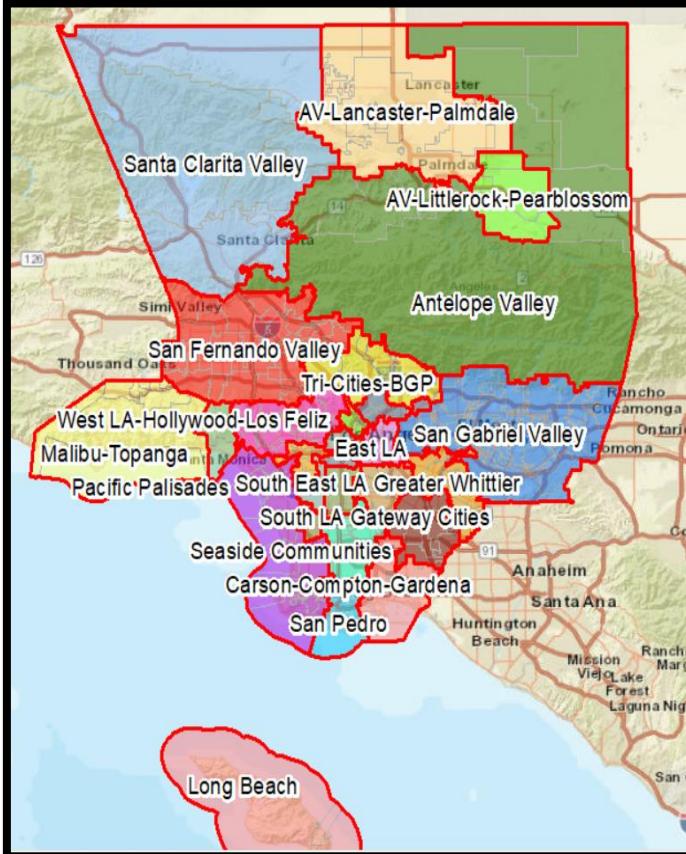


Community of Interest (COI) Groupings: Models A, B, C

COI Model A: Presented on 10/13/21

COI Model B: Developed on 10/18/21

COI Model C: Developed on 10/18/21





Where to draw the lines?

U.S. Constitution, 52 U.S.C. § 10301, Cal. Election Code § 21534

District lines will be adopted using the following criteria in order of priority:

1. Each district shall be reasonably equal in total resident population to the other districts, except where deviation is required to comply with the Federal Voting Rights Act (VRA) of 1965 or allowable by law.
2. Districts shall comply with the Federal Voting Rights Act (VRA) of 1965.
3. Districts shall be geographically contiguous.
4. The geographic integrity of city, local neighborhood, or community of interest shall be respected in a manner that minimizes its division.
5. To the extent practicable, and where it does not conflict with numbers 1-4 above, districts shall be drawn to encourage geographic compactness.

Besides the above criteria, districts shall not be drawn for purposes of favoring or discriminating against an incumbent, political candidate, or political party.





Question:

What other COI groups would you like to be combined with to reach 2 million residents?

Shape
your future
START HERE > | United States®
**Census
2020**

Dale forma
a tu futuro
EMPIEZA AQUÍ > | United States®
**Census
2020**



More information on our website

<https://redistricting.lacounty.gov/>

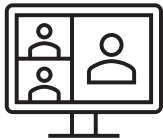




Sign up and stay informed: <https://redistricting.lacounty.gov>



Note: October meetings will be virtual; November public hearings may be hybrid: Attend and participate in person in keeping with COVID-19 health safety protocols – **masks required**



Attend and participate virtually in CRC meetings and public hearings:
<https://us02web.zoom.us/j/82726060927>



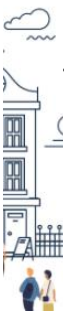
Listen only to CRC meetings and public hearings by calling:
(669) 900-9128, enter: 827 2606 0927#



View CRC meetings and public hearings on YouTube:
<https://www.youtube.com/LACountyRedistricting/>



To speak or submit written comments via:
<https://publiccomment.redistricting.lacounty.gov/>
By mail: Los Angeles County CRC, P.O. Box 56447, Sherman Oaks, CA 91413





Our CRC Commissioners

Co-Chair Daniel Mayeda
Co-Chair Carolyn Williams

Commissioner Jean Franklin
Commissioner David Holtzman
Commissioner Mary Kenney
Commissioner Mark Mendoza
Commissioner Apolonio Morales
Commissioner Nelson Obregon

Commissioner Priscilla Orpinela-Segura
Commissioner Hailes Soto
Commissioner Saira Soto
Commissioner Brian Stecher
Commissioner John Vento
Commissioner Doreena Wong





LA County CRC Resource Support

Staff

Gayla Kraetsch Hartsough, Ph.D.
LA County CRC Executive Director
President, KH Consulting Group
Associate Adjunct Faculty, University of Southern California
ghartsough@crc.lacounty.gov

Thai V. Le
LA County CRC Clerk
Consultant, KH Consulting Group
Doctoral Candidate, University of Southern California
GIS, Public Policy, and Technical Support
tle@crc.lacounty.gov

Subject Matter Experts

Carlos De Alba, Marketing, Media, and Outreach Consultant

Priti Mathur, ARCBridge
Demographic Analysis and ESRI Mapping Software

Bruce Adelson, Esq., Federal Compliance Consulting LLC
Professor Jonathan N. Katz, Ph.D., Caltech
Racially Polarized Voting Analysis

Independent Legal Counsel

Holly O. Whatley, Esq., Shareholder
Aleks R. Giragosian, Esq., Senior Counsel
Pamela Graham, Esq., Senior Counsel

Colantuono, Highsmith & Whatley, PC 790 E.
Colorado Blvd., Suite 850
Pasadena, CA 91101-2109
(213) 542-5700 tel
(213) 542-5710 fax
hwhatley@chwlaw.us



Executive Director Overview

Slides Available Depending on Questions



LA County Redistricting Approach

Past Approach

- The Los Angeles County Board of Supervisors appointed an advisory-only Boundary Redistricting Committee (BRC) to study proposed changes to the boundaries.
- The Board of Supervisors could make revisions before adopting the final redistricted boundaries.

New Approach with California SB 2016

- Formation of Citizens Redistricting Commission to draw the boundary lines of the five single-member supervisorial districts for the next 10 years
- **Independent** from the influence of the Board
- Reasonably representative of the County's diversity





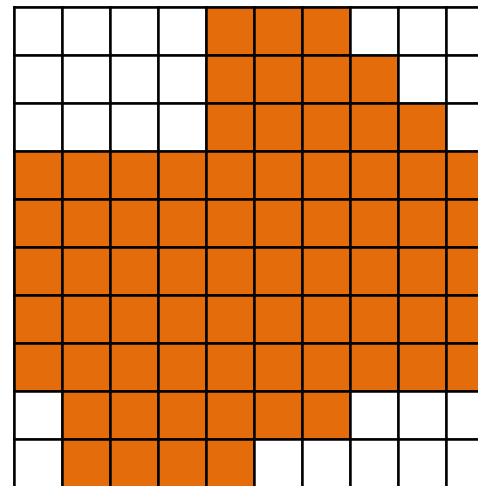
Where to draw the lines?

U.S. Constitution, 52 U.S.C. § 10301, Cal. Election Code § 21534

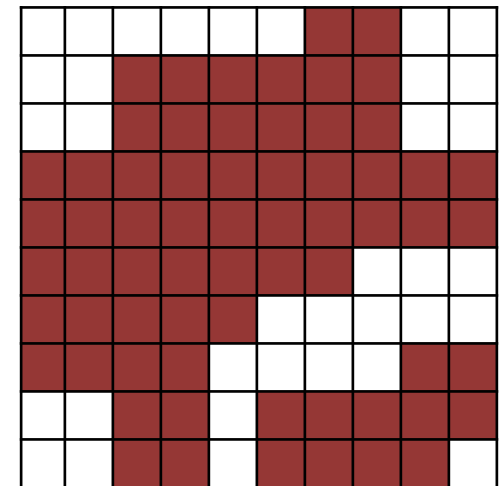
Simply put:

- Establish reasonably equal population
- Give racial and ethnic groups a fair shot
- **Connect all parts of a district (geographic contiguity)**
- Preserve geographic integrity of cities, neighborhoods, and communities of interest
- Don't bypass nearby populations in drawing districts (compactness)
- Avoid partisan favoritism

Contiguous District



Non-Contiguous District





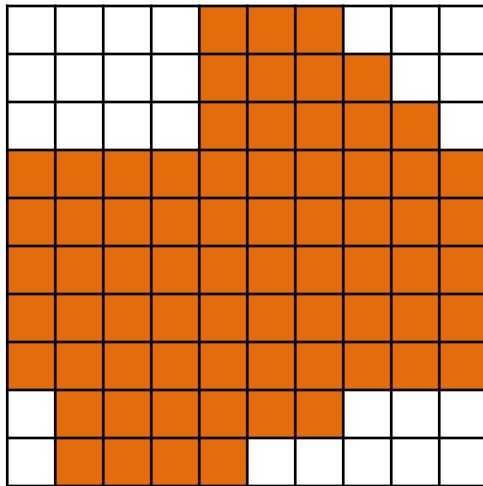
Where to draw the lines?

U.S. Constitution, 52 U.S.C. § 10301, Cal. Election Code § 21534

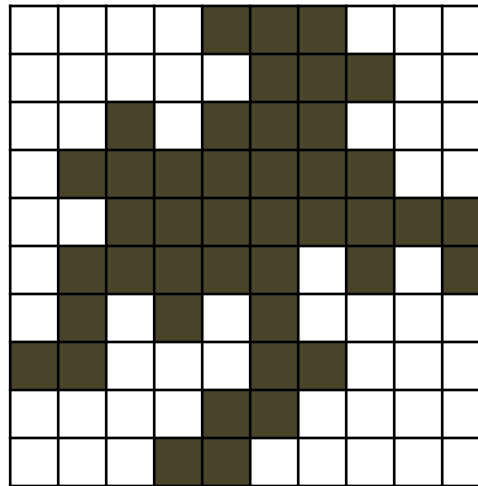
Simply put:

- **Don't bypass nearby populations in drawing districts (be compact)**

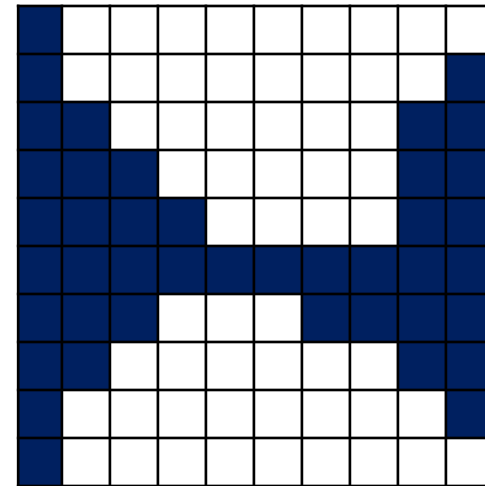
Fair: Compact



Unfair: Contorted



Unfair: Dispersed



Toolkits to spread the word!

Outreach toolkit on our website in the County's 12 threshold languages:

- Fact sheets
- Presentations

Facebook: [RedistrictingLACounty](#)

Twitter: [@DrawLACounty](#)

**For more information:
redistricting.lacounty.gov**



LA County's 12 Threshold Languages

- | | |
|-------------------|--------------------|
| ▪ Armenian | ▪ Tagalog/Filipino |
| ▪ Chinese | ▪ Vietnamese |
| ▪ Cambodian/Khmer | ▪ Hindi |
| ▪ Farsi | ▪ Japanese |
| ▪ Korean | ▪ Thai |
| ▪ Spanish | ▪ Russian |

Gayla Kraetsch Hartsough, Ph.D., serves as the Executive Director of the Los Angeles County Citizens Redistricting Commissioner (LA County CRC). She has been the President of KH Consulting Group (KH) since 1986. KH offers management consultant services in strategic and organizational planning, business process improvements, change management, and performance and management audits. KH has served more than 200 clients in 25 states and 9 foreign countries, including Australia, The Czech Republic, Taiwan, Canada, France, Singapore, Indonesia, The Philippines, Saudi Arabia, and China. Among her clients are:



- Government (e.g., the City of Los Angeles, County of Los Angeles, County of Orange (CA), and City and County of Denver)
- Higher education and non-profit organizations (USC, UCLA, Northwestern University, California State University system, Los Angeles Unified School District, Los Angeles Community College District, San Francisco City College, among others)
- Transportation networks (LAX, Port of Long Beach, Port of Los Angeles, South Australia Department of Marines & Harbours, and Port Authority of New York-New Jersey)
- Utilities (Metropolitan Water District, Illinois Power Company, Telstra (Australia), Southern California Edison, and Los Angeles Department of Water & Power (LADWP))
- Other private sector entities

Prior to KH, she was a Managing Consultant at Towers Perrin (now Willis Towers Watson).

She holds a B.S. degree from Northwestern University; a master degree from Tufts University; Ph.D. and master degrees from the University of Virginia; and a post-doctorate fellowship from the Woodrow Wilson National Fellowship Foundation.

She has served on various boards, including National Association of Women Business Owners Los Angeles (NAWBO-LA) (Board Member 2008-2011); Organization of Women Executives; Earth Protect (Advisory Council Member); and Northwestern University Entertainment Alliance (NUEA-West) (former Board Member). She is a member of Northwestern University's Council of 100.

She is an Associate Adjunct Faculty member and teaches public policy to international graduate students and delegations at the University of Southern California, Sol Price School of Public Policy.