

Citizens Redistricting Commission (CRC) Meeting

LIVE STREAM WILL BEGIN SHORTLY

<https://www.youtube.com/LACountyRedistricting/>



LOS ANGELES COUNTY
REDISTRICTING
2021





LOS ANGELES COUNTY
REDISTRICTING 2021

Los Angeles County Citizens Redistricting Commission (CRC)

Public Hearing for Communities of Interest (COI) Input
September 29, 2021





1. Call to Order



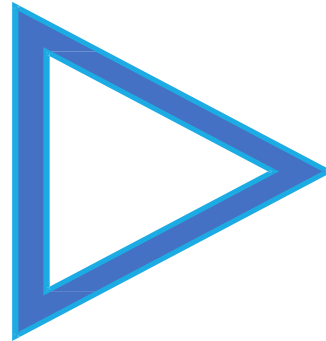
Notice

This meeting is being recorded and will be posted on LA County CRC website:

<https://redistricting.lacounty.gov>

This meeting is streaming live at:

<https://www.youtube.com/LACountyRedistricting/>



**During the CRC meeting, if you need technical assistance,
use the Q&A button at the bottom of your Zoom Webinar screen.**

Thai Le, LA County CRC Clerk, can assist you.





2. Roll Call

Commissioner Jean Franklin

Commissioner David Holtzman

Commissioner Mary Kenney

Co-Chair Daniel Mayeda

Commissioner Mark Mendoza

Commissioner Apolonio Morales

Commissioner Nelson Obregon

Commissioner Priscilla Orpinela-Segura

Commissioner Hailes Soto

Commissioner Saira Soto

Commissioner Brian Stecher

Commissioner John Vento

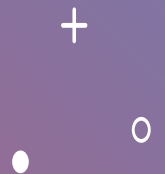
Co-Chair Carolyn Williams

Commissioner Doreena Wong



+
0 •

**Thank You,
Clifton M. Brakensiek
Library in Bellflower
for hosting this hybrid
COI Public Hearing**



We appreciate your patience.

This LA County CRC meeting combines:

- Virtual attendance (Zoom)
- In-person attendance
- Spanish interpreters





Health Safety Protocols

- Although Los Angeles County “re-opened” with the rest of the state on June 15, 2021, changing conditions in Los Angeles County due to the rapid spread of the Delta variant of COVID-19 has prompted new restrictions by the Los Angeles County Department of Public Health.
- Effective as of Sunday, July 18, 2021, LACPDH Health Orders require that all persons, regardless of vaccination status, **must wear masks/facial coverings at all indoor public settings.**

For your safety and others:

- Wear a mask that covers your nose and mouth—INDOORS—regardless of vaccination status
- Social distance from others who don’t live with you
- Wash your hands often with soap and water, or use hand sanitizer

Source: LACCD, <http://laccd.edu/About/News/Documents/Safety-Advisories/Safety%20Advisory%20-%20COVID%2019%20UPDATED%20PROTOCOLS%20041421%20Final%20%20revised%20July%202021%20Final.pdf>





Reporting Positive COVID-19 Test or Symptoms after the Public Hearing

Contact tle@crc.lacounty.gov to report COVID-19 exposures and positive cases so we can let individuals who signed in know of their potential risks.

Initial Response If Reporting Positive COVID-19 Test

- Immediately home-quarantine for 10 days
- Instruct individual to tell his/her close contacts to home-quarantine for 10 days
- Call your doctor/healthcare provider for further direction
- Continue to monitor symptoms between 11 to 14 days and seek care if symptoms escalate
- Remain in contact with Public Health
- Seek medical attention immediately if you are having difficulty breathing or keeping fluids down

Initial Response if Reporting COVID-19 Symptoms

- Immediately home-quarantine for 10 days
- Get tested at any Public Health test site immediately at a location near you
- Call your doctor/healthcare provider for further direction
- Continue to monitor symptoms between 11 to 14 days and seek care if symptoms escalate
- Seek medical attention immediately if you are having difficulty breathing or keeping fluids down

– Source: LACCD, <http://laccd.edu/About/News/Documents/Safety-Advisories/Safety%20Advisory%20-%20Protocols%20for%20Reporting%20COVID-19%20Exposure%20Incidents%20revised%20July%2027%202021.pdf>





Definition of Infectious and Close Contact Defined

- A patient with presumed or confirmed COVID-19 is considered to be infectious from 2 days before their symptoms started until their isolation period ends.
- Asymptomatic patients with a laboratory-confirmed COVID-19 infection are considered to be infectious from 2 days before their test was taken until 10 days after their test was taken.
- A “close contact” refers to any of the following people who were exposed to a patient with presumed or confirmed COVID-19 (“patient”) while they were infectious:
 - An individual who was within 6 feet of the patient for a total of 15 minutes or more within a 24-hour period
 - An individual who had unprotected contact with the patient’s body fluids and/or secretions (e.g., being coughed or sneezed on, sharing utensils or saliva, or providing care without wearing appropriate protective equipment)

Source: LACCD, <http://laccd.edu/About/News/Documents/Safety-Advisories/Safety%20Advisory%20-%20Protocols%20for%20Reporting%20COVID-19%20Exposure%20Incidents%20revised%20July%2027%202021.pdf>





3. Approval of Agenda

Co-Chair Carolyn Williams



4. Update on Mapping Software with Official California Public Law Database and Other Data Sets

Co-Chairs Carolyn Williams and Daniel Mayeda

Presentation by:

- David Ely, Compass Demographics
- Priti Mathur, ARCBridge



Mapping Software Base Datasets

Official California Public Law (PL) Census data adjusted for the incarcerated population

- RDUs (90,000 versus 3,000)
- Adjusted population and Voter Age Population (VAP) total and by U.S. Department of Justice (DOJ) categories
- Unadjusted CVAP by DOJ categories
- 2020 Registration Total and by surname matched categories
- Socio-Economic Data (ACS)
 - Language spoken at home, just Spanish, Asian Language, and Other
 - Renter/owner occupied
 - Income Categories
 - Education Categories
 - Poverty

Dataset requirements to draw redistricting maps

Aiming for 1st week in October to launch the official data base and mapping software

Additional training on mapping software on in Spanish on October 8 at 9:30-10:30 a.m.





U.S. Department of Justice Ethnic Categories

Latino (LAT)

Everyone who responded affirmatively to Hispanic Origin question regardless of race.

Following categories are Not Hispanic or Latino:

White (WHI)

Single race White alone.

Black (BLK)

Single race Black and 2 race Black and White.

American Indian (AIN)

Single race AIN and 2 race AIN and White.

Asian (ASI)

Single race Asian and 2 race Asian and White.

Hawaiian Pacific Islander (HPI)

Single race HPI and 2 race HPI and White

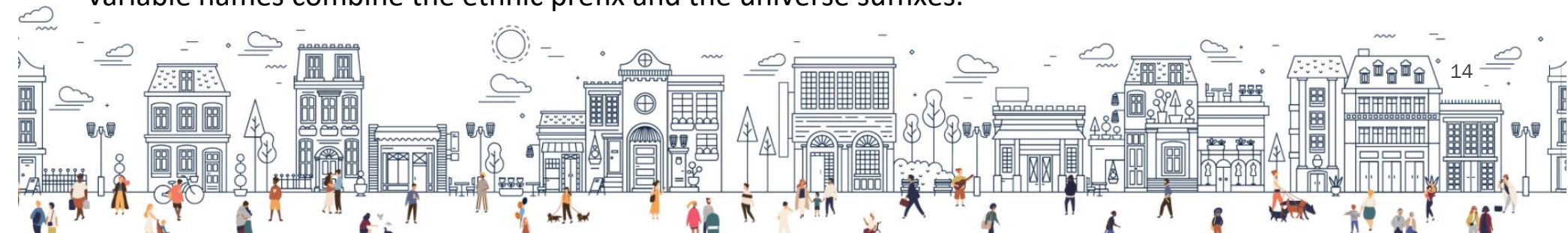
Other Race (OTH)

Single race Other and 2 race Other and White

Multi Minority Race (MMR)

All multi race categories except those assigned above.

These categories are provided for Adjusted Population (**POP_A20**), Adjusted Voting Age Population (**VAP_A20**), and unadjusted Citizen Voting Age Population from 2019 CVAP tabulation (**CVAP_D19**). The variable names combine the ethnic prefix and the universe suffixes.





Other datasets suggested to include on CRC website for public use and transparency

- Additional ACS data
- Block equivalency to RDU
- Other Election data (major and recent contests), including surname match with partisan info removed
- Other – to be determined





How to Make Public Comment

*Type your name and affiliation/organization into QA
if you want to make a General Public Comment.*

*If on a phone line, press *9 to raise your hand.
Once called upon, press *6 to unmute and speak.*

Each Person Gets 2 Minutes unless the Co-Chairs determine otherwise.

Each person only gets 1 opportunity to speak.

When you speak, share your name and affiliation at the beginning.



7. Action/Discussion Items: Public Hearing for Communities of Interest

Complete the COI Google Form if you want to:

- ★ Submit written input
- ★ Speak orally before the Commission

<https://forms.gle/e9aHEhyAp8GM8EEZ6> or [Click Here](#)

All information entered onto the COI Google Form will be available and posted on the CRC website, by date of public hearing: <https://redistricting.lacounty.gov/virtual-meetings/>





Communities of Interest (COI) Google Form

The Commission wants to know four key things from you about your community:

- 1. The economic and social interests that bind your community together**
- 2. Why your community should be kept together for fair and effective representation**
- 3. Where your community is located**
- 4. What nearby areas do they want to or not want to be grouped with**

While there are no clear rules on how to define a community of interest, here are some ways to describe your community.

1. Begin with your city or unincorporated area: Mention the street names and significant locations in your neighborhood to help identify the parameters of your community.
2. What are your shared interests?
3. What brings you together?
4. What is important to your community?
5. Are there nearby areas you want to be in a district with?
6. Nearby areas you don't want to be in a district with? Why or why not?
7. Has your community come together to advocate for important services, better schools, roads, or health centers in your neighborhood?





How to Make COI Public Comment

At the start of the public hearing, complete the COI Google Form if you want to:

- ★ Submit written input
- ★ Speak orally before the Commission

<https://forms.gle/e9aHEhyAp8GM8EEZ6> or [Click Here](#)

If on a phone line, press *9 to raise your hand.
Once called upon, press *6 to unmute and speak.

Each Person Gets 2 Minutes unless the Co-Chairs determine otherwise.
Each person only gets 1 opportunity to speak.

When you speak, share your name and affiliation at the beginning.



Public Hearings for Communities of Interest (COI): Guidelines for Public Comments

Order for oral public comments:

1. Individuals who complete the COI Google Form
- Individuals from other communities not covered by zip codes but completed the COI Google Form
2. Any other individuals, enter into QA:
 - Your name and community of interest
3. Individuals who call in

Redistricting Mapping Suggestions:

- LA County is providing free mapping software to develop preliminary maps
 - Official database for submitting maps to be released the first week in October 2021
 - In the interim, if you wish to submit maps, email them to Thai V. Le at:
tle@crc.lacounty.gov
- We appreciate feedback. Send ideas on how to make it better to: tle@crc.lacounty.gov

LA County CRC Clerk, Thai V. Le, can share a map during the public hearing to show the geographic area being discussed.





7A. Consider Adopting Resolution Authorizing Hybrid and Fully Teleconferenced Meetings of the Commission for a 30-Day Period

Co-Chair Carolyn Williams and Co-Chair Daniel Mayeda

Background: Recently passed legislation allows legislative bodies to continue to conduct teleconference meetings after September 30 if certain criteria are met and findings made. This item is to consider adopting a formal resolution that includes specific findings regarding health and safety issues. Such resolution would permit the LA County CRC to conduct its anticipated October 6, 2021, meeting virtually as well as meetings within the following 30 days. The LA County CRC will need to re-adopt such findings at least every 30 days to enable the resolution to continue in effect.

- i. Staff Report – Holly Whatley, Independent Legal Counsel to the LA County CRC



7B. Executive Director Report

Redistricting Maps

Now is the time to synthesize COI input, think about how to review submitted maps, and define next steps



Next Steps Regarding COI Input

COI Input

- COI input are building blocks for building supervisorial district maps
- Tonight = last public hearing for COI input
- Encouraging submissions of COI input by Sept. 30th so can be incorporated as the Commissioners shift to reviewing submitted maps

Public Map Input to Date

- Preliminary and COI maps submitted to date – hub just went live: [CLICK HERE](#)

Analysis of COI Input and Hypotheses

- Recording the Commissioner team meetings
- Commission teams of only 2-3 Commissioners
- Each zone reviewed by at least two teams as a check-and-balance
- No Commissioners attend other team meetings
- Commitment to transparency
 - Commissioners and public can view the recordings at the same time that they are available for the public to see
 - All recordings will be posted and draft COI hypotheses shared for the full Commission and public on October 6 to see what's missing, where there are areas of agreement/overlap, etc.





6. Executive Director Report (continued)

Consider Establishment of an Ad Hoc Working Group or Subcommittee to Review Maps Submitted, Organize them for Commission Consideration, and/or Develop Working Drafts of Maps for Full Commission Debate — Co-Chair Daniel Mayeda – Continuation

- i. Executive Director Report Update – Gayla Kraetsch Hartsough, Ph.D.
 - i. Refinement of options based on last week’s questions of clarification – in all 3 options:
 - ii. In all three options:
 - i. **November**: Full Commission conducts public hearings to solicit public input on the redistricting mapping options; it requests ARCBridge to refine the options, based on public input.
 - ii. **By December 15, 2021**: Full Commission adopts final map.





Options	Number of Commissioners	Focus of Ad Hoc WG in October 2021
1. Establish a new Ad Hoc WG on Mapping to perform this task	<ul style="list-style-type: none">Permit participation of up to 7 CommissionersCommissioners interested should let the Co-Chairs knowMembers to be selected by the Co-Chairs	<p>October: Ad Hoc WG works with ARCBridge to define themes and prepare groups of maps, along the lines of the themes, for consideration before the full Commission and to solicit public input.</p> <p>Last week in October: Ad Hoc WG develops or proposes redistricting mapping options for the full Commission's consideration. ARCBridge draws the options.</p>
2. Establish a new Ad Hoc WG on Mapping to perform this task	<ul style="list-style-type: none">Same as above	<p>October: Ad Hoc WG works with ARCBridge to define themes and prepare groups of maps, along the lines of the themes, for consideration before the full Commission and to solicit public input.</p> <p>Last week in October: Full Commission develops redistricting mapping options for ARCBridge to draw.</p>
3. Use the full Commission to perform this work at regularly posted meetings	<ul style="list-style-type: none">All 14 Commissioners	<p>October: Have ARCBridge bundle the maps according to themes for the full Commission to consider and solicit public input.</p> <p>Last week in October: Full Commission develops redistricting mapping options for ARCBridge to draw</p>



Adjournment

Co-Chair Daniel Mayeda

To learn about the LA County CRC, sign up at:
<https://redistricting.lacounty.gov/>

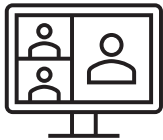




Sign up and stay informed: <https://redistricting.lacounty.gov>



Attend and participate in person in keeping with COVID-19 health safety protocols – **masks required**



Attend and participate virtually in CRC meetings and public hearings:
<https://us02web.zoom.us/j/82726060927>



Listen only to CRC meetings and public hearings by calling:
(669) 900-9128, enter: 827 2606 0927#



View CRC meetings and public hearings on YouTube:
<https://www.youtube.com/LACountyRedistricting/>



To speak or submit written comments via:
<https://publiccomment.redistricting.lacounty.gov/>
By mail: Los Angeles County CRC, P.O. Box 56447, Sherman Oaks, CA 91413



LA County CRC Staff

Executive Director

Gayla Kraetsch Hartsough, Ph.D.
(818) 907-0397
ghartsough@crc.lacounty.gov

CRC Staff

Thai V. Le (Doctoral Candidate, USC)
GIS, Public Policy, and Technical Support
LA County CRC Clerk

Carlos De Alba
Marketing, Media, and Outreach Consultant

Independent Legal Counsel

Holly O. Whatley, Esq., Shareholder
Aleks R. Giragosian, Esq., Senior Counsel
Pamela Graham, Esq., Senior Counsel

Colantuono, Highsmith & Whatley, PC
790 E. Colorado Blvd., Suite 850
Pasadena, CA 91101-2109
(213) 542-5700 tel
(213) 542-5710 fax
hwhatley@chwlaw.us



Citizens Redistricting Commission (CRC) Meeting

*** RECESS ***

LIVE STREAM WILL RESUME SHORTLY



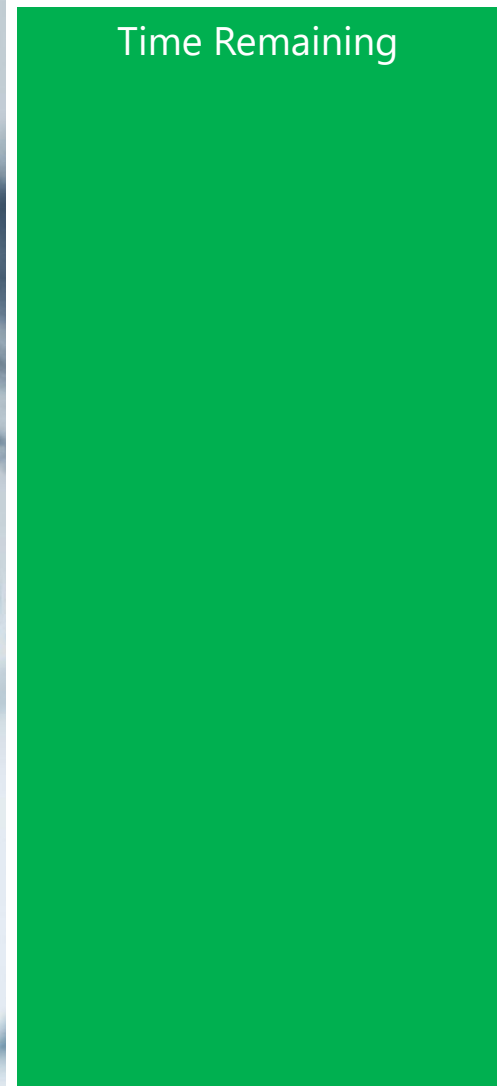
LOS ANGELES COUNTY
REDISTRICTING
2021





Public Comment: 1 Minute

Time Remaining





LOS ANGELES COUNTY REDISTRICTING 2021

Public Comment: 2 Minutes

Time Remaining





LOS ANGELES COUNTY REDISTRICTING 2021

Public Comment: 3 Minutes

Time Remaining





Times Up! Wrap Up

