

Submitted Public Comments for Zone E Public Hearing

Name	Zip Code	Community name	About the community	Nearby areas to include or not include	Other community information	Other public comments
Kenyon	90018	Homelessness in pain	Our community has way more to gain for the homeless people like make a zone for them to park makes a chart the who keeps there area's more cleaning like 20 colored chart with dated information on a high scale that updates every 12 hrs a day with how someone is doing far as they don't have no interest in keep up on there commitments to do better help or push done wants I'm speaking for family that loses everything and currently homelessness in pain	-	To reduce tickets payment to close down OPG OFFICIAL POLICE GARAGE IT'S DISRUPTIVE TO OUR COMMUNITY IT CHANGES OUR LIVES LIKE FOR INSTENTS IT TAKES THE CAR CHANGES HIGH BILL THE GO STRAIGHT AHEAD AND OPG DOES leansales if not sold the junkyard get it for \$200 or Little more or less we citizens snuffers but most importantly the homeless where would they sleep when nothing put in place to protect us homelessness in Pain	-
Valerie Morishige	90068-2331	Hollywood	Hollywood is becoming a multicultural modern urban center, please encourage the growth of public transit, smartly managed tourism, accessible green spaces (Bronson Canyon, other	Do not group with Glendale, Burbank, South Pasadena, make SD-25 more compact	traffic/congestion, managing tourism, getting permanent housing for our unhoused neighbors	We need more coordination on solving the housing crisis in a way that centers care and compassion and not incarceration. Please draw lines that will help solve this crisis.

Submitted Public Comments for Zone E Public Hearing

			Griffith Park entrances) by not putting us in a district with places notorious for being NIMBY in their approach to the challenges of today.			
Connie Isais	90605	Unincorporated Whittier	We are struggling with a homeless population	No	We are a family oriented community, lots of good schools and nice families	Please keep our districts fairly balanced
Tieira Ryder	90066	-	-	-	-	I'm Tieira Ryder, a district 11, Mar Vista Housing advocate. When I think of my community, I think of families and a sense of belonging. I believe that Mar Vista, specifically the area on the tip of Venice that runs into the Santa Monica airport, I believe that we are misrepresented and should be part of a coastal district. I believe that both Mar Vista and Venice require more space from Santa Monica City, specifically the incorrectly zoned Santa Monica airport land space, so that a walkable, affordable housing community can be developed for the core workforce on the westside of LA; Venice, Santa Monica, Mar Vista area. All residents deserve safe, clean, and affordable housing, local cities like Santa Monica are upholding illegal segregation as it relates to race & class! They are causing congestion in our coastal cities and we must gather public land space from them in order to create a community that benefits everyone

Submitted Public Comments for Zone E Public Hearing

						<p>instead of a small privileged class minority!</p> <p>Thank You for your time regarding the issue.</p> <p>Best, Tieira https://htwws.org/santamonicaairport/</p> <p>(See attachment A-1)</p>
Brian Rodriguez	90262	Lynwood, CA	It is a small community that I feel needs more attention from public, county, and government officials.	I would like to connect with Downey and nearby cities that are within the same region as mine. And not the higher class communities	Public Safety within the community. What's important to my community is keeping it safe and clean.	I feel that the county or government needs to provide more income to the smaller areas and inner cities.
Eddie De La Riva	90270	SELA	For too long we have been ignored and overlooked and we finally feel we have found our collective voice as SELA and our current elected officials, Supervisor Solis and Assemblyman Rendon have been instrumental in getting us much needed resources.	Bell, Bell Gardens, Commerce, Cudahy, Huntington Park, Lynwood, Maywood, South Gate, Vernon. We feel these cities have the most in common and deserve to be kept together and identified as a community of interest.	Our communities have many shared interests and commonalities that unite us and make us stronger as a region and community of interest. We face the same inequities when it comes to high rents, environmental injustices, lack of green space, health risks, lack of affordable housing, and so much more. It isn't until just recently that we feel our	Please keep SELA together and keep us in SD1 with Sup Solis and AD63 with Assemblyman Rendon.

Submitted Public Comments for Zone E Public Hearing

					priorities are being represented by our current elected officials at the County and State levels. Our communities are primarily Latino and so it is our shared cultural values that unite us and make us stronger. What is most important to our communities is that we be represented properly and that our voices and concerns are heard, and we feel Supervisor Hilda Solis and Assemblyman Rendon best represent us and truly care for our communities.	
Elia Partida	90022	East LA	-	-	Hola, yo me llamo Elia Partida, y soy unA miembra de la Coalición de los Derechos Humanos al Inmigrante (CHIRLA) y de él People Bloc. Yo vivo en la comunidad de East LA por 61 años. Las personas que vivimos en mi comunidad somos gente trabajadora. La mayoría somos	(See Attachment A-2.) (See recording for live comments.)

Submitted Public Comments for Zone E Public Hearing

					latinos y el lenguaje preferido es el español. Algunos de mis vecinos trabajan en una tortillería local, otros en restaurantes de comida rápida, muchos son vendedores ambulantes venden frutas, raspados. Por la calle Whittier Blvd muchos miembros de la comunidad se ganan la vida trabajando en trocas de comida vendiendo tacos, birria hot dogs y pupusas lo cual me preocupa por la sanidad y frescura de los alimentos pero de algún modo tenemos que sobrevivir y llevar dinero para nuestra renta y bills que tenemos que pagar. Por la calle Whittier Blvd están abriendo muchos negocios de smoke shop lo cual está al acceso de muchos jóvenes que pasan cuando van y vienen de la escuela Ford Blvd Elementary, Humphreys, Griffith Jr High y Garfield	
--	--	--	--	--	---	--

Submitted Public Comments for Zone E Public Hearing

					<p>High School. Esas son muy buenas escuelas públicas, pero caminar por la Whittier Blvd es imposible con las tiendas que sacan los productos en las banquetas, los indigentes que están por donde quiera. Hay muchos servicios disponibles para mi comunidad, algunos de esos servicios están disponibles en East LA College, la clínica Edward R Roybal (clínica de colores) ayudan a la comunidad a aplicar para salud médica como medicina de emergencia a la comunidad inmigrante. En la clínica también se refieren a otras organizaciones sin fin de lucro donde ayudan a pagar la renta y bills atrasados especialmente ahora con COVID. Para los niños y jóvenes tenemos la librería de East Los Angeles Library y parques que son muy conocidos como el Obregón</p>	
--	--	--	--	--	---	--

Submitted Public Comments for Zone E Public Hearing

					<p>park, Belvedere park, Salazar park. Pero con tantos smoke shops y indigentes no me siento segura para los niños/jóvenes. Aunque no es un recurso un lugar muy conocido en mi comunidad es el cementerio El Calvario que es una parte importante del vecindario. Muchos vecinos corren y caminan a su alrededor. Antes de COVID la celebración más famosa en mi vecindario es Christmas parade normalmente que empieza en la Eastern y Whittier y termina en la Whittier y la Atlantic. Es muy especial para los niños porque se emocionan al ver a Santa Claus. Las autopistas principales en mi comunidad son el freeway 710 hacia Long Beach. Este se conecta al freeway 5 a Santa Ana y el 110. Para moverme en mi comunidad puedo usar los siguientes</p>	
--	--	--	--	--	--	--

Submitted Public Comments for Zone E Public Hearing

					<p>sistemas de transporte público: el bus 18 viene de Garfield y va a downtown. También tenemos el metro red line y el tren. Localmente hay un shuttle que pasa de la Olympic hasta la César Chavez. Es importante que mi comunidad se mantenga unida porque necesitamos un representante que se enfoque en asistir a la comunidad sin hogar (homeless) y en la falta de vivienda. Por falta de vivienda y porque el costo de las viviendas es muy alto hay muchas personas que viven en RVs en nuestra comunidad o que no tienen hogar. Cuando se camina en las calles de East LA hay muchas RVs parqueadas en la calle. Necesitamos a un líder en la comunidad que se comprometa a resolver la homelessness y que entienda que el aumento de Smoke Shops que se han</p>	
--	--	--	--	--	---	--

Submitted Public Comments for Zone E Public Hearing

					establecido en la comunidad hace que el vecindario no se sienta seguro de caminar. Por concluir, les he compartido un mapa con mi testimonio escrito por email para detalles de los límites del mapa de mi comunidad. Gracias por la oportunidad de compartir el día de HOY	
Carlos Leon	90044	The Vermont/Crenshaw Central Corridors	It's been a black and brown community for decades and we are beginning to build and reconstruct our home	NA	We have so many historical landmarks in our Community that hold important stories of what happened, where we are and where we can go as a black and brown community.	<i>(See recording for live comments.)</i>
Timothy Watkins	90059	Watts CA	Watts, CA affectionately referred to as "MudTown" has unmitigated value above ground and under ground. There are government dollars set aside for Watts that due to the diverse layout of the community get lost and convoluted into other areas of the District.	Yes. The community of Watts needs to entirely Redistricted from LA Council District 15 into Council District 9	History - My father Ted Watkins Sr., is the founder of the Watts Labor Community Action Committee. I am now the CEO of the non-profit. With an annual operational budget in excess of \$30 Million we are supporting the Redistricting of Watts	none at this time <i>(See recording for live comments.)</i>

Submitted Public Comments for Zone E Public Hearing

					our of CD 15 into CD 9. Bring an end to the decades of Taxation without Representation that the Residents of the Watts community have had to deal with for over six decades.	
Christina Montalvo	90280	South East Los Angeles	We are made up of hard working blue collar people. Many of which were or are working 2 to 3 jobs to make ends meet.	Similar cities and areas Lynwood, Florence Firestone, Bell Gardens , and South Gate	We need more resources especially following the aftermath of Covid pandemic. Many are suffering from food insecurities, high inflated rent, and low wages. Many have lost loved ones to Covid and Covid related illnesses and need mental health support, along with drug and alcohol rehabilitation and counseling.	We are in great need of so many resources including education, rental assistance, and health
Robert Montalvo	90280	South Gate	We're not doing well	Yes	Veterans community	I'd like to talk <i>(See recording for live comments.)</i>
Valerie Morishige	90068-2331	Hollywood	Hollywood is becoming a multicultural modern urban center, please encourage the growth of public transit, smartly	Do not group with Glendale, Burbank, South Pasadena, make SD-25 more compact	traffic/congestion, managing tourism, getting permanent housing for our unhoused neighbors	We need more coordination on solving the housing crisis in a way that centers care and compassion and not incarceration. Please draw lines that will help solve this crisis.

Submitted Public Comments for Zone E Public Hearing

			managed tourism, accessible green spaces (Bronson Canyon, other Griffith Park entrances) by not putting us in a district with places notorious for being NIMBY in their approach to the challenges of today.			
LISSETH	90201	Bell Gardens	When the pandemic hit, leaders from our surrounding areas came together and had to cross congressional lines and district lines to be able to advocate. it is my personal believe that we should remain united with the addition of the city of Lynwood since we share the same discrepancies and lack of resources as the rest of SELA	Bell Gardens is a part of Southeast Los Angeles and it should remain joint to at surrounding cities like South Gate, Cudahy and Bell who We actually shares zip codes with.	Bell Gardens is home to some of the youngest families in LA county. It's made up of about 80% renters. We are a low income city and highly dependent of the Bicycle hotel and casino for city revenue and jobs.	Keep district 1 as is with the addition of Lynwood. <i>(See recording for live comments.)</i>
Elizabeth Alcantar	90201	Southeast Los Angeles	Our communities here in Southeast Los Angeles are all: -Almost 50% immigrant -Over 90% Latinx -Are largely young with a quarter to a third of the population being under the age of 18 -About 25% are living without internet even in conditions like we've	We should remain in the First District with the cities of Bell, Bell Gardens, Commerce, Cudahy, Huntington Park, Lynwood, Maywood, South Gate, and Vernon.	The Southeast Los Angeles communities are predominantly immigrant and working class with distinct interests and particular needs. Cities such as Bell, Bell Gardens, Commerce, Cudahy, Huntington Park,	<i>(See recording for live comments.)</i>

Submitted Public Comments for Zone E Public Hearing

			experienced in the last year and a half -And have about a quarter of our population living in poverty		Lynwood, Maywood, South Gate, and Vernon are home to residents that have been historically underrepresented and under-resourced. They share many struggles including the Exide contamination, pollution from major highways such as the I-710, I-105, and I-5, and face obstacles when it comes to gaining equitable health, home, and education access.	
Jose Miguel Ruiz	91733	South El Monte	Our communities are resilient, together.	Strongly suggest to keep El Monte, South El Monte and Baldwin Park represented by one Supervisor District. Thus, increasing access and coordination to County services around food security, green spaces for communities of color and vaccine equity during COVID-19 pandemic.	CultivaLA Inc. is a non-profit organization serving the San Gabriel Valley through Urban Agriculture. Important to address issues around food insecurity, lack of green spaces for communities of color and environmental justice.	CultivaLA held a food distribution to over 300 individuals in the San Gabriel Valley on 06/30/2021 and key County resources are essential. <i>(See recording for live comments.)</i>
Kristie Hernandez	90063	Unincorporated East Los Angeles	Unincorporated areas are on the sidelines, neglected and many	I believe we should maintain the geographical integrity	Unincorporated East Los Angeles is a multi-generational	<i>(See recording for live comments.)</i>

Submitted Public Comments for Zone E Public Hearing

			times voiceless when it comes to policy change. Many decisions are made for unincorporated residents. Our local LA County Board of Supervisor is the most local elected official, but not exclusive to East LA - we share our LACBOS Supervisor with 2 million other residents.	of the current LA County District 1 - East Los Angeles, Northeast and Southeast Los Angeles should remain together. These communities share many values and challenges and have worked together to advocate for improved quality of life.	community with a rich culture and sense of community.	
Ahtziri Esqueda	90022	East Los Angeles	I feel that my community shares many struggles which are not heard about to people in the County to better the situation. As a close community that we are, I observe that we get through our struggles as a whole with such people as neighbors or even neighborhood watch.	-	Something I see that brings my community together is the residents coming together no matter their mixed races. We compare our cities and regions to others and we seem to have, mainly, less gang activity and instead, more united people.	-
Kirk Samuels	90807-1843	South L.A.	My community is rich with human capital. We have a lot of shared experiences like culture, music, and the arts. We also have many shared interest such as affordable housing, police and immigration reform. Many of our residents work at the	Compton, Watts, Gardena, Rancho Dominguez, West Adams	Racial equity and social justice. Police reform. Affordable housing.	<i>(See recording for live comments.)</i>

Submitted Public Comments for Zone E Public Hearing

			same places like Metro or the LAX and take great pride in contributing positively to the community.			
Carmen Taylor Jones	90008	WATTS, CA	<p>Historically, the Watts Community is where the predominance of Black people who relocated in California settled. Personally, my mother who just recently celebrated her 100th Birthday on Mother's Day, has lived in her same home in the Watts Community for 80 years. Every relative which I have ever known and known of has at sometime lived in Watt. That story is duplicated over and over. Most Black people that I am affiliated with have "Roots" of some degree in the Watts community. We are gathering our voices to support the Redistricting of Watts out of LA Council District 15 into Council District 9. Understanding that upon the decision/vote to annex Watts into the</p>	<p>Yes. The voice of the people is to Redistrict the Watts community completely out of CD 15 into CD 9</p>	<p>Watts is historic on three different levels. If you Google 1. "Towers of the World" after Eiffel Towers. The 2. Train Station of 103rd Street is listed as a "Historical Designation" on the Historical Registry. 3. The Watts Riot of 1965 is one of the most historic uprisings in the United States history books</p>	<p>As per our work on the 2020 Census there remains less that a dozen of communities in California that are predominantly African American. It is critical that we preserve the history of Watts and discontinue the practice of Taxation without Representation</p>

Submitted Public Comments for Zone E Public Hearing

			City of Los Angeles in 1927 was completed for reasons and purposes that may not be completely transparent...It is clear that the benefits has waned in totality and no longer of value to the residents.			
Geraldine White	90044	Vermont Knolls	Care for our community, care for our neighbors, have neighbor meetings, community food giveaway twice a month, Nature community walks, Blockclub gatherings, check on our neighbor, communicate with our Senior Lead Officer @ 77th Percent, well call 77th Precent when the helicopter is flying around our area to see whats goig on in the neighborhood. We communicate with each other via phone if there's a disturbance on our block,keep and eye on each others property when we are out of town, etc.	N/A	We have a good amount of Seniors in our area.	We are mostly home owners. Maybe 80 percent or more.
Sebastian	90660	Latino Community	As Latinos, we all shared one interest what brings us all together which is to			Give us a chance to succeed.

Submitted Public Comments for Zone E Public Hearing

			give our families a good future. And a simple thing that is important to us is having an opportunity to succeed			
Candice Cho	-	-	-	-	-	(See Attachment A-3.)
Cassandra Diaz	90001	Florence Firestone	My community is made up of low-to-no income and working class communities. My neighbors are mostly street vendors, small business owners and small restaurant owners. Since my family has lived here we've developed friendships with the local business owners. Most of my neighbors live in single-family homes or duplexes. Basically, there are multiple houses on a lot, usually a front house and a back house, but these are different families.	I live in an unincorporated neighborhood and it's important that my community is kept together with communities that resemble mine. I would like the commission to consider Florence-Firestone being grouped with neighboring South East Los Angeles cities like Walnut Park, South Gate, Huntington Park or even being kept with Lynwood, Watts, Compton and West Carson.	It's important that my community is kept together in one supervisorial district because achieving equity and justice is necessary to protect and provide resources for undocumented communities, Black, Indigenous, Latinx and people of color communities that are harmed by environmental racism, white-supremacy, lack of truly affordable housing, and the COVID-19 health pandemic. It's important that commissioners do not disempower the political power of BIPOC communities	We used to have a public library, but that was taken down to make way for apartments. A public library was taken down and moved to a bungalow at the park.

Submitted Public Comments for Zone E Public Hearing

Attachment A-1 begins next page.

Created by Tieira Ryder

02/27/2021

To: Asm. Richard Bloom

Asm. Ben Allen

Asm. Sydney Kamlager

President Council Nury Martinez

District 11 Council Member Mike Bonin

Mayor of Los Angeles Eric Garcetti

Mar Vista CC

Venice NC

LDP & Commision

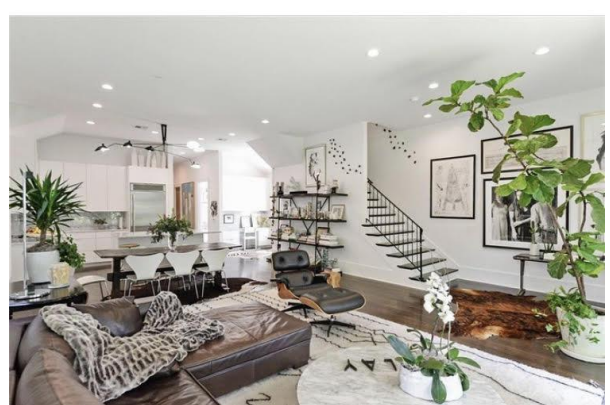
HCID & HCLA

Regarding

- Affordable Housing for district 11 working class residents, seniors, students, those living with disabilities, and others in need of affordable housing.
- District 11's incorrect zoning in relation to the Santa Monica airport, Santa Monica's intentional and continual displacement of working class residents on the westside.

Proposal

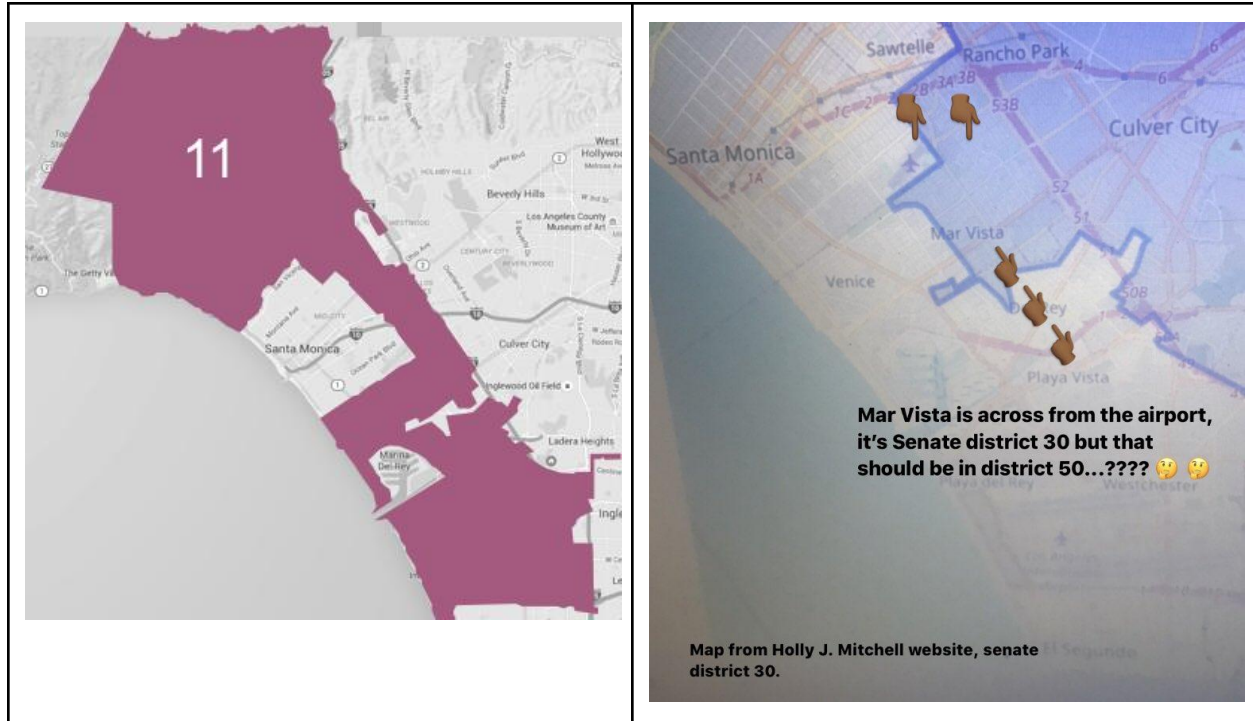
Requesting closure of the Santa Monica airport by January 2022, with an intention to use the open & safe space of the airport as early as June 2021. In June, the goal should be to begin the process (if not sooner) to build affordable housing in the open airport space that includes both affordable rent and homeownership options. The community is being proposed as a walkable, affordable community that includes affordable bungalows, apartments, condos, and townhomes.





Who

The working class, our seniors, our students, our veterans, and those living with disabilities are being denied their right to safe, clean, and affordable housing in the city of Los Angeles. Rent has gone up over 65% in the last 10 years, during that time the increase in the number of unhoused residents grew by over 50%. The working class is being pushed into poverty, WE CANNOT afford \$2,000 a month in rent for a studio apartment with no parking on a median income. *We need affordable housing that is community owned*, likely through a trust, that protects affordability of housing. If you look at the maps below, you can see where **Mar Vista** is shown below on the map, that is where I'm located. I'm in a small area that really goes unseen and we are in desperate need of more affordable housing and open park space. ***We literally have no open park space even though there are many children in the area!*** Santa Monica has taken too much land space from Mar Vista and Venice, both communities run into the open airport space off bundy.



How this project can be funded

1. **The American rescue plan-** states “ the bill provides \$5 billion to provide rental assistance and supportive services, **to develop affordable rental housing**, to help acquire non-congregate shelter to be converted into permanent affordable housing or used in emergency shelter”.
2. Grants and any other state or federal relief.
3. Consider a series as a reality style project in partnership with a T.V network like HGTV. Should be shown in a positive light of creating affordable housing communities.
4. If the location is deemed to be in a tourist area and/or a percentage of residents from the community work in neighboring cities that have high tourist attractions that generate large sums of revenue, a portion of said revenue from tourism would go into the community trust fund.

Opposition/ Needs

1. Correctly rezone council district 11 and assembly district 30 in relation to the Santa Monica airport open land space. ***By ending racist & classist zoning that is negatively impacting residents of the westside, working class residents of Mar Vista and Venice would have access to more open, public land space in order to be used for affordable housing & park space that residents desperately need.*** The tip of Mar Vista where I live that runs into Venice beach should be in Asm. District 26 or 50 and part of Venice & coastal concerns.
2. Santa Monica's refusal to build enough affordable housing has displaced many working class residents on the westside, ***including myself!*** Santa Monica city is currently showing off Belmar Park online, ***a beautiful space that was once home to black residents on the westside before the city displaced them.*** The city shows off this empty park space as many black residents & others are still displaced today! A resident in the city of Santa Monica recently mentioned that one of Santa Monica's affordable housing apartment buildings with over 200 units, is mostly housed ***with White senior residents from Eastern Europe***, so maybe it's a senior building, but can the city provide a list to show the demographics of the inhabited affordable units? I was a tech worker in the city for a period of time and I was not successful in obtaining affordable housing from the city.
3. Overturn Measure LC in Santa Monica which requires a public vote on the use of the Santa Monica airport space if necessary. This may not be necessary if the district is zoned correctly and the land space is returned to LA City. ***No group of people should be able to deny others housing.*** It is a form of housing discrimination that a mostly white, well off population from Santa Monica that has housing, could vote on an issue and possibly deny other residents the right to the same basic need of housing. ***Also, if the assembly repeals article 34, that could?*** potentially take care of MeasureLC. Community members from Mar Vista and Venice need to spread out and we need more open park space. Long term residents in each of those areas should get priority for housing.***
4. **Regarding the FAA;** Request that the city attorney, if necessary, challenge the rule that states no person can live at the airport while it's operating. There is plenty of open space that can be utilized now. (To begin building affordable housing in June 2021; full airport closure by January 2022)

5. Possibility of toxic air space needs that would require a remedy to keep water and air space clean for the community and surrounding neighborhoods.

Affordable Rentals

1. Reasonably priced affordable apartments for lower and middle income earners. The recommended height for apartment buildings is 4-5 stories. Rent would need to match the average wage of the essential worker in mentioned cities. Rent should not take more than 30% of an essential workers income; (if market rate set takes more, renter could potentially get part of rent subsidized)
2. Set an “*affordability market rental rate*” based off of this income bracket (about); \$20,000-\$100,000, but priority should** be given to those that fall within the lower to middle income bracket, as well as workers that have established residency from mentioned cities. (*income bracket \$20,000-\$75,000*) No income *restrictions* once residents are housed.

<https://www.nhlp.org/resources/lihtc-admissions-rents-grievance-procedures/>

For those with limited to no income and/or displaced minors

1. ***Offer portion of the housing for residents with limited or no income, to be partnered with westside chapters of HUD/HCID-LA etc.*** We can set a market rate, but it is understood that some residents may have limited or no income. If we set bachelor apartments at \$600 but a potential renter couldn't afford that market rate we set because they had limited or no income, then the funds from HUD would ***subsidize*** whatever costs the renter couldn't afford. This would likely be for seniors, single parents, students, those living with disabilities, veterans, and/or chronically homeless but self functioning. This project for rental units, let's call it “***District 11 airport***”, could possibly** “***request from HUD the actual market rate cost of a rental unit apartment***” (EX: We set a market rate of \$600, but maybe* a bachelor should** cost \$1,200 in Los Angeles, HUD would cover the difference in the housing projects trust fund. Money to be used for expenses related to rent,

including admin, onsite safety & security if necessary as well as maintenance for rental units.) Rent would also likely be subsidized by renters paying market rate or slightly above market rate for rental units.

2. Consider large home space for displaced minors within the community aka a "group home" to provide stability.

Affordable homeownership

1. Public bank that offers low financing to potential homeowner(s)
2. Set a market rate for the total cost of a home that the homeowner would pay. When it comes to **restorative justice & equity**, the city would offset any cost that went above the actual ***inflation rate of what a home should be for the income bracket listed above.***
3. Home types can be single bungalows or attached/detached townhomes. The homes *could*** function similar to that of homes that are in HOA's. (TBD)
4. There would be resell requirements for said homes to protect affordability.
5. Income limits should be set for the working class, residents in Mar Vista and Venice get priority. **30% of the housing should be offered to African Americans as a restorative, affordable housing initiative that returns homeownership opportunities to black displaced families on the westside, as a right to return.** This would not replace any federal reparation payment. I do believe that restorative justice & equity as a whole should include homes that are not required to follow resell requirements, that can be done as a larger restorative housing program but likely would not be part of this specific proposed project. TBD.
6. Request consideration of **affordable homeownership** for the millennial generation, or a percentage of the core group, as they own less than 18 percent of the real estate in Los Angeles. (EQUITY)

“Equity is defined as “the state, quality or ideal of being just, impartial and fair.” The concept of equity is synonymous with fairness and justice.”

To our elected officials, I ask that you please consider this request to close the Santa Monica airport in order to begin the process of building affordable housing that belongs to the working class, seniors, students, and others in need of said housing as early as June 2021. We cannot wait 8 more years for the airport space to close as the wealthy in that area occupy too much of the open space in comparison to surrounding cities and they also use the space to drag their cars over in the airport area while we are all in desperate need of housing, housing that we needed 10 years ago! No resident should have to beg for housing that they can afford, no elected official or Gov't should have that type of power that can deny the basic need for housing. ***Thank you for taking the time to read this request from a community housing advocate in Mar Vista that has been displaced, I'm looking forward to your response! As a courtesy, I've sent this letter to officials in the city of Santa Monica.***

Best,

Tieira Ryder

<https://htwws.org/santamonicaairport/>

tie.ryder@gmail.com

Links

https://www.surfsantamonica.com/ssm_site/the_lookout/news/News-2020/August-2020/08_28_2020_Santa_Monica_Names_New_Sports_Field_After_Once_Thriving_Black_Neighborhood.html

<https://www.latimes.com/opinion/livable-city/la-oe-sharp-santa-monica-airport-housing-20190331-story.html>

“Santa Monica’s estimated population of 92,478 residents in 2019 was only a blip above what it was in 1970, when 88,289 people called the city home. This growing imbalance between jobs and housing has created a massive influx of daily commuters into Santa Monica (even well-compensated tech employees) who either can’t find or can’t afford housing near these job centers. Meanwhile, the population in neighboring jurisdictions has swelled, displacing lower-income residents.”

Created by Tieira Ryder
02/27/2021



Created by Tieira Ryder
02/27/2021

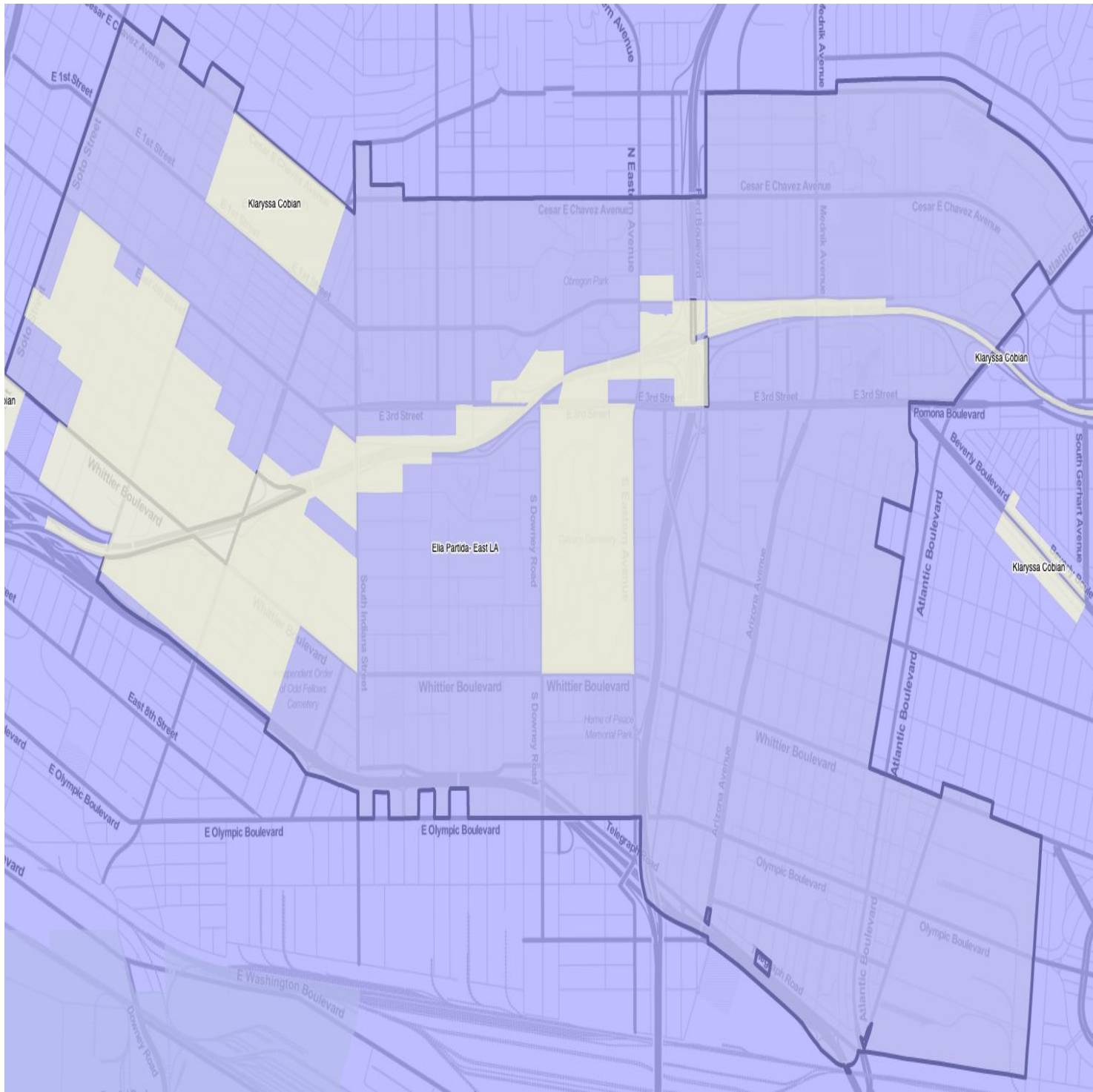


Created by Tieira Ryder
02/27/2021



Submitted Public Comments for Zone E Public Hearing

Attachment A-2 begins next page.



Submission ID: 071420211366_Elia Partida- East LA

Submission ID: Draft - Not Submitted to the California Citizens Redistricting Commission

Describe your community

Give your community a name*

Elia Partida- East LA

Tell us about your community. What are your shared interests? What brings you together? What is important to your community?*

Hola, yo me llamo Elia Partida, y soy un miembro/a de la Coalición de los Derechos Humanos al Inmigrante y de él People Bloc. Yo vivo en la comunidad de East LA por 61 años.

Las personas que vivimos en mi comunidad somos gente trabajadora. La mayoría somos latinos y el lenguaje preferido es el español.

Algunos de mis vecinos trabajan en una tortillería local, otros en restaurantes de comida rápida, muchos son vendedores ambulantes venden frutas, raspados. Por la calle Whittier Blvd muchos miembros de la comunidad se ganan la vida trabajando en trocas de comida vendiendo tacos, birria hot dogs y pupusas lo cual me preocupa por la sanidad y frescura de los alimentos pero de algún modo tenemos que sobrevivir y llevar dinero para nuestra renta y bills que tenemos que pagar.

Por la calle Whittier Blvd están abriendo muchos negocios de smoke shop lo cual está al acceso de muchos jóvenes que pasan cuando van y vienen de la escuela Ford Blvd Elementary, Humphreys, Griffith Jr High y Garfield High School. Esas son muy buenas escuelas públicas, pero caminar por la Whittier Blvd es imposible con las tiendas que sacan los productos en las banquetas, los indigentes que están por donde quiera.

Hay muchos servicios disponibles para mi comunidad, algunos de esos servicios están disponibles en East LA College, la clínica Edward R Roybal (clínica de colores) ayudan a la comunidad a aplicar para salud médica como medicina de emergencia a la comunidad inmigrante. En la clínica también se refieren a otras organizaciones sin fin de lucro donde ayudan a pagar la renta y bills atrasados especialmente ahora con COVID.

Para los niños y jóvenes tenemos la librería de East Los Angeles Library y parques que son muy conocidos como el Obregón park, Belvedere park, Salazar park. Pero con tantos smoke shops y indigentes no me siento segura para los niños/jóvenes.

Aunque no es un recurso un lugar muy conocido en mi comunidad es el cementerio El Calvario que es una parte importante del vecindario. Muchos vecinos corren y caminan a su alrededor.

Antes de COVID la celebración más famosa en mi vecindario es Christmas parade normalmente que empieza en la Eastern y Whittier y termina en la Whittier y la Atlantic. Es muy especial para los niños porque se emocionan al ver a Santa Claus.

Las autopistas principales en mi comunidad son el freeway 710 hacia Long Beach. Este se conecta al freeway 5 a Santa Ana y el 110. Para moverme en mi comunidad puedo usar los siguientes sistemas de transporte público: el bus 18 viene de Garfield y va a downtown. También tenemos el metro red line y el tren.

Localmente hay un shuttle que pasa de la Olympic hasta la César Chavez.

Es importante que mi comunidad se mantenga unida porque necesitamos un representante que se enfoque en asistir a la comunidad sin hogar (homeless) y en la falta de vivienda. Por falta de vivienda y porque el costo de las viviendas es muy alto hay muchas personas que viven en RVs en nuestra comunidad o que no tienen hogar. Cuando se camina en las calles de East LA hay muchas RVs parqueadas en la calle. Necesitamos a un líder en la comunidad que se comprometa a resolver la homelessness y que entienda que el aumento de Smoke Shops que se han establecido en la comunidad hace que el vecindario no se sienta seguro de caminar.

Por concluir, les he compartido un mapa con mi testimonio escrito por email para detalles de los límites del mapa de mi comunidad.

Gracias por la oportunidad de compartir el día de HOY

Are there nearby areas you want to be in a district with? Nearby areas you don't want to be in a district with? Why or why not?

Is there anything else you can tell us about your community?

Submitted Public Comments for Zone E Public Hearing

Attachment A-3 begins next page.

My name is Candice Cho. I recently moved to mid-city Los Angeles. Before that I lived in downtown Los Angeles (DTLA) for a year and a half, mostly during the pandemic. I still commute there for work. I am the Managing Director of Policy and Counsel at the Asian Pacific Policy & Planning Council (A3PCON). A3PCON is a member of two multiracial coalitions advocating for equitable representation for communities of color in the redistricting process: the People's Bloc and the AAPI & AMEMSA State Redistricting Collaborative.

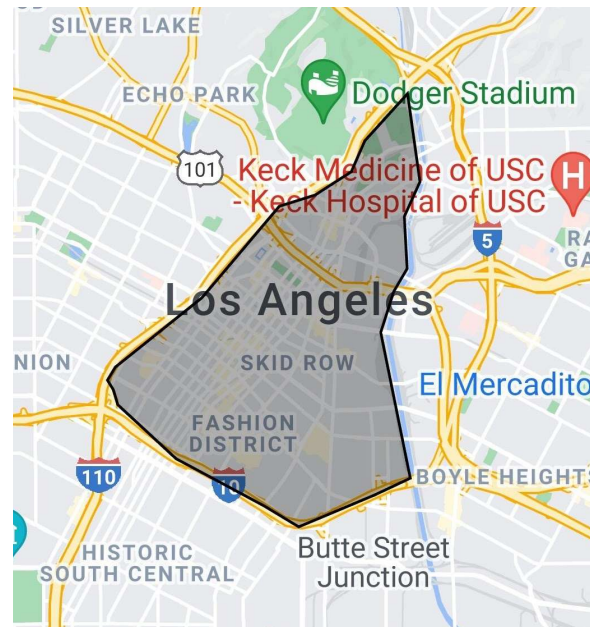
Geographically, DTLA is bound by the 10 freeway to the south, 110 to the west, 101 to the north, and LA River to the east. This bumpy rhombus contains many microneighborhoods, each with its own identity, from the commercial skyscrapers and cultural attractions of Bunker Hill to the thousands of unhoused neighbors living on sidewalks in Skid Row and the service providers who support them.

DTLA is very diverse. Economy-wise, it's home to produce wholesalers, small businesses in the Fashion and Flower Districts, and many restaurants and retailers that are supported by the office workers who commute in and the residents who increasingly make up the neighborhood.

Residents, many of whom rent apartments, range from those who can pay thousands of dollars a month for a luxury loft, to unhoused neighbors on the street, to working families struggling to make rent. When I walk my dog during lunch, it's normal for me to interact with: a street vendor working out of a food truck, a lawyer buying a \$16 salad, a musician on his way to an acting gig, an unhoused neighbor asking for food or money, a tourist looking for Grand Central Market.

DTLA also accommodates multiple transit options, which is unusual for car-dominated LA. The streets and sidewalks are shared by cars, Metro, buses, bikes, scooters, and pedestrians.

The #1 issue on everyone's minds is homelessness. Thousands of people live on the streets, and entire blocks are filled with tents and other temporary structures. In my experience walking these blocks, most people are just trying to carve out a small space of privacy and safety where they can live without bothering anyone or being bothered. Sometimes I see people with serious physical or mental health needs going unmet, such as a person drinking water out of the gutter, a person cooking their food over a fire under a freeway underpass, or a person without shoes wandering in the middle of traffic (all on the same block where you can buy a \$16 salad). All my



neighbors have opinions about what should be done, and we often disagree. But everyone agrees that the status quo is unacceptable.

Other issues that matter are support for small businesses recovering from the pandemic, access to more parks and green spaces, and the pollution and noise that comes from being surrounded by freeways.

I would urge any redistricting commission to keep DTLA whole because of the unique challenges and opportunities that come from having such a dense, diverse, transit-rich area defined by such definite boundaries. I also think it makes sense to keep together DTLA and Chinatown (generally bound by the 110, 101, and LA River, but I defer to that community's definition of its boundaries) because of their proximity and shared concerns with affordability, especially of housing. It's important to me to have elected officials who can rise to the challenge of representing a community that is in many ways a microcosm of America - people from all walks of life, abundance adjacent to poverty, stark inequality - and who can fight for more equitable access to wealth, privilege, and opportunity.