

Submitted Public Comments for Zone E Public Hearing

Name	Zip Code	Community name	About the community	Nearby areas to include or not include	Other community information	Other public comments
Terry Kanakri	-	-	-	-	-	I urge the Committee to keep the Santa Clarita Valley in the 5th Supervisorial District, as that district continues to reflect the needs and interests of the people who live there. Also, please do not gerrymander all districts. Thank you.
Cheri Blose	91342	Sylmar	-	-	Sylmar is a large community at the extreme North East end of the City, we are an equestrian community and we see lots of horses on our streets heading to and from the trail. We are so far behind with our infrastructure and need help keeping the developers out from building mega apartment buildings because we have open land.	We need to attempt to keep the community nature as it is.
Bob Anderson	91403	Sherman Oaks	Our community is very strong and close. We want the entirety of Sherman Oaks in a single Supervisorial district, as we currently are. We do not want our community split between districts.	We work closely with our neighboring communities of Encino, Van Nuys, Studio City, and Bel Air-Beverly Crest.	Sherman Oaks is a 73,000-person Community of Interest with a long history of working to improve our community and the entire San Fernando Valley. We are	(See Attachment A-1) (See recording for live comments.)

Submitted Public Comments for Zone E Public Hearing

					concerned with smart development, solutions to the affordable housing crisis, traffic, and rapid transit. My organization, the Sherman Oaks Homeowners Association, is deeply involved with planning issues, California housing legislation, and the Sepulveda Transit Corridor Project.	
Ann O'Connor	-	Sherman Oaks	-	-	-	(See Attachment A-2) (See recording for live comments.)
Matt Chassin	91607	SFV	-	-	this is a very diverse community, but the one that we seem to share is progressive values.	right wing groups have gerrymandered districts all over the country to give the right wing minority an unfair advantage. they are going to do more, as more red states are picking p congressional districts. We must insure that our congressmen do not lose their seats
Ann O'Connor	91411	Part of Sherman Oaks ("POSO")	We love our community of Sherman Oaks!!	We request to be kept whole with Greater Sherman Oaks in LA County District #3	Dear Commissioners: As POSO Team Leaders, we represent a neighborhood in North Sherman Oaks (in Los Angeles) referred to as Part of Sherman Oaks ("POSO"). POSO's boundaries are	Our community worked very hard on our campaign to be renamed Sherman Oaks in 2009 and would request that you keep us united and whole with Greater Sherman Oaks and maintain our contiguity and voting strength with Greater Sherman Oaks in LA County District #3 (See recording for live comments.)

Submitted Public Comments for Zone E Public Hearing

					<p>Burbank Blvd (south) to Califa/Tiara (north) and the Fwy 405 (west) to Hazeltine (east). POSO's population is approximately 6900 residents, as shown in the map at the right. We prevailed on July 14, 2009 to have the Los Angeles City Council include POSO in the community of Sherman Oaks. This is documented in Los Angeles City Council File 08-2758 (included as Attachment 1). After our Renaming, we were able to attend the LA City Redistricting Commission meetings in 2010 and 2011 and advocate successfully to be kept whole with Greater Sherman Oaks within Los Angeles City Council District 4. We are requesting to be united and kept whole with Greater Sherman Oaks in Los Angeles County Supervisorial District #3. POSO has been kept whole with</p>	
--	--	--	--	--	--	--

Submitted Public Comments for Zone E Public Hearing

					<p>Greater Sherman Oaks in four of the five districts that were redistricted in 2010-2011: (1) California Senate District 18; (2) California Assembly District 46; (3) Los Angeles County Supervisorial District 3; and (4) Los Angeles City Council District 4. Therefore, we request to continue to be kept whole with Greater Sherman Oaks in these four districts. Additionally, we are concurrently asking the CA Redistricting Commission to be united with Greater Sherman Oaks in the Congressional District #30. We share a community of Interest with Greater Sherman Oaks in many areas, as we highlighted during POSO's 2009 Renaming to Sherman Oaks and those interests remain constant today. - Geographical Proximity - We share our southern border of Burbank Blvd with Greater Sherman</p>	
--	--	--	--	--	---	--

Submitted Public Comments for Zone E Public Hearing

					<p>Oaks. Our most frequented businesses are all in Sherman Oaks and many within walking distance, and our closest grocery stores and gas stations are in Sherman Oaks.</p> <p>- Similarity of Residential Dwellings and Landmarks - POSO is primarily single-story residential dwellings of similar lot acreage and square footage to homes south of Burbank Blvd. POSO has a low propensity of townhomes and apartments in the neighborhoods on both sides of Burbank Blvd. Our neighborhood north of Burbank was built by the same paving company as south of Burbank Blvd (Malcom Paving 1950 stamped into our sidewalks/curbs). - Lack of Similarity to the area north of Califa and Tiara - The area north of Califa/Tiara is in a commercial and industrial zone. The Orange Bus Line</p>	
--	--	--	--	--	---	--

Submitted Public Comments for Zone E Public Hearing

					<p>continues along the commercial and industrial corridor and dissects our neighborhood from the community north of the Orange Line. - Educational Community - The children of residents of our neighborhood attend the same public schools (elementary/middle school) as residents from the community south of Burbank (Kester Avenue Elementary & Van Nuys Middle School). The Sherman Oaks Library is our community library. - Property Values – Comps for homes north and south of Burbank Blvd are within 5% - 10% of each other. - Property Deeds – Many deeds in POSO showed Sherman Oaks as the city even before the 2009 Renaming. - Sherman Oaks Hospital/Emergency Room – This is our closest Emergency Hospital and we share this community of</p>	
--	--	--	--	--	--	--

Submitted Public Comments for Zone E Public Hearing

					<p>interest with Greater Sherman Oaks, including the many medical offices around the hospital. - Recreation Activities – Sherman Oaks Park is our beautiful community Park for children and adults’ school/community athletic teams (i.e., baseball, soccer, jogging, exercise equipment, swimming pool, tennis courts, basketball courts, and Movies in the Park during the summer, etc.). It is our closest park and within walking distance to POSO. - The Annual Sherman Oaks Fair – on Ventura Blvd. POSO supports and looks forward each year to the Annual Fair in October where we commune with neighbors, families and business owners. It is part of our community. Local schools (elementary, middle & high school) put on musical and dance stage performances. Professional music</p>	
--	--	--	--	--	--	--

Submitted Public Comments for Zone E Public Hearing

					<p>groups perform on the big stage next to the tented food/refreshment gardens. Shop owners, tented vendors and amusement rides available all day. - Sherman Oaks Senior Center is located in the park and serves as a hub for activities/lunches for seniors as well as an auditorium for presentations by Sherman Oaks Homeowners Association (“SOHA”) on issues affecting our community (i.e., housing and retail developments, metro plans, legislation, etc.) - Economic Impact and The Sherman Oaks Chamber of Commerce acknowledges our neighborhood’s positive economic impact on Sherman Oaks. Through patronage of grocery stores, restaurants, banks, shopping malls, dry cleaners, florists and theatres,</p>	
--	--	--	--	--	---	--

Submitted Public Comments for Zone E Public Hearing

					<p>POSO adds value to the economic vitality and job creation in Sherman Oaks. - Local Police Dept National Nite Out – Every year, neighborhoods host our Local Police and the Senior Lead Officers (“SLOs”) on a rotating basis between streets in POSO and Greater Sherman Oaks. The event nurtures a closer relationship with our Sherman Oaks’ SLOs and local representatives; and families enjoy the evening of fun, food and music. - Metro’s Sepulveda Transit Corridor Project “STCP” and Airplane Noise are both community interests which unite us with Greater Sherman Oaks in our opposition to any elevated tracks above Sepulveda Boulevard. Elevated, noisy, heavy rail trains 20 feet above Sepulveda will be devastating and severely damaging to the</p>	
--	--	--	--	--	---	--

Submitted Public Comments for Zone E Public Hearing

					<p>Sherman Oaks community. We want the STCP to succeed and enhance the future of our community and we have been working with Greater Sherman Oaks and the Sherman Oaks Homeowners Association (“SOHA”) towards that goal. Reducing airplane noise from both Van Nuys and Burbank Airports is also a share interest. - The Sherman Oaks Homeowners Association (“SOHA”) – We are proud to say Sherman Oaks enjoys a very strong SOHA which is politically active in all issues affecting our community: real estate development, metro and transportation issues, redistricting issues, beautification, vision plans and much more. SOHA works closely with the Chamber of Commerce and Neighborhood Councils. The monthly SOHA meetings are well</p>	
--	--	--	--	--	--	--

Submitted Public Comments for Zone E Public Hearing

					<p>attended and introduce new local restaurants for dinner. They also have had a very successful Annual Toy Drive for 21 years at Christmastime that benefits the Dept of Children and Family Services. SOHA publishes a very helpful and informative monthly newsletter detailing issues of concern. They have been holding monthly zoom meetings with residents during the pandemic with our elected officials as guest speakers. The 2011 LA City Council Redistricting Commission said Sherman Oaks is a powerful, unified community of interest that is whole within CD4 (see Attachment 2). The 2011 City Redistricting Commission noted that preserving Sherman Oaks whole as a community of interest was one of four major commission</p>	
--	--	--	--	--	---	--

Submitted Public Comments for Zone E Public Hearing

					<p>accomplishments. A critical goal for 2021 redistricting is keeping Sherman Oaks, including POSO, whole in a single Council District, as quoted below. “The Recommended Plan identifies and preserves “whole” the following communities as identified by the City of Los Angeles’ Community Renaming Policy, or grandfathered in from previous policies and actions of the City Council: Historic Filipinotown, Koreatown, Little Armenia, Little Bangladesh, Little Ethiopia, Little Tokyo, Rose Hill, Sherman Oaks, and Thai Town.” [Andrew Westall, Executive Director, Report and Recommendations of the Los Angeles City Council Redistricting Commission, March 1, 2012, page 2] In conclusion, we ask that the Commission keep our POSO</p>	
--	--	--	--	--	--	--

Submitted Public Comments for Zone E Public Hearing

					neighborhood “whole and united” with Greater Sherman Oaks and maintain our contiguity and combined voting strength with Greater Sherman Oaks within Los Angeles County Supervisorial District #3.	
Jeremy Payne	90004	LGBTQ+ Community of Zone C	The LGBTQ+ COI in Zone C has a history of voting cohesively to elect candidates of choice — both members of the LGBTQ+ community and officials who have been consistently responsive to the LGBTQ+ community's needs.	Remain together with the 3rd BOS District - The local LGBTQ+ COI elected a choice candidate in 2014, which ended up being the first openly LGBTQ+ member of the Los Angeles County Board of Supervisors.	There is a very significant, geographically specific LGBTQ+ communities of interest that resides in the neighborhoods of North Hollywood, Valley Glen, Valley Village, Studio City, and Toluca Lake. The local LGBTQ+ community has helped shaped these neighborhoods and now these areas serve as major building blocks of the local LGBTQ+ communities in Los Angeles, especially among members of the community who have left more urban LGBTQ+ neighborhoods like West Hollywood for	<i>(See recording for live comments.)</i>

Submitted Public Comments for Zone E Public Hearing

					more suburban living in the San Fernando Valley.	
Stuart Waldman	91406	San Fernando Valley	The people of the San Fernando Valley have never been represented by a city of Los Angeles Valley resident.	If you must go north but not South of Mulholland.	The San Fernando Valley is a community of over 1.8 million people in the Northern Prt of Los Angeles. Bordered by mountains.	(See Attachment A-3.) <i>(See recording for live comments.)</i>
William Slocum	91342	Kagel Canyon, CA	We are in a high fire area and the surrounding communities are as well, so we know each other quite well.	Lake View Terrace, Sundland, and Shadow Hills	We are a very rural horse owing community in the NorthEast San Fernando Valley and share many interests in housing, work, education, and commerce with our neighbors of Lake View Terrace, Sundland, and Shadow Hills.	We want to remain part of the 5th district as we work and collaborate well together with our immediate neighbors. (See Attachment A-4.) <i>(See recording for live comments.)</i>
Issam Najm	91324	Porter Ranch	-	The community interests and concerns I note above are shared by many foothill communities in the San Fernando, San Gabriel, and Santa Clarita Valleys. For these reasons, I	Porter Ranch is a developing community with a strong residential setting. Our residents greatly value the outdoors and enjoy the trails in the community on a daily basis. Our greatest threat is wildfires	I believe that we are best suited in the 5th District as currently outlined as we share many common interests and concerns with the other communities in the District. (See Attachment A-5.) <i>(See recording for live comments.)</i>

Submitted Public Comments for Zone E Public Hearing

				believe we should be in one District.	because of our foothill location, and we have suffered numerous wildfire effects over the years. Wildfire preparedness is something that our residents are very aware of and engaged in.	
Christine Rowe	91307	West Hills	I use the CalEnviroScreen Draft 4.0 documents related to Pollution Burden Indicators, Population Characteristics Indicators, and Overall Results. I also use their new Race / Ethnicity tool. Based on a presentation I saw at one of your previous meetings, I understand that you need to draw Ethnically Diverse Districts. By using these tools on Race and Ethnicity as well as the other tool, you would be drawing more equitable Districts. I believe those tools can justify a San Fernando Valley Whole Supervisorial District.	West Hills should be districted with Canoga Park and Woodland Hills. Parts of West Hills are in the Warner Center Specific Plan as a part of their "Neighborhood Protection Plan" program.	West Hills is a primarily single family residential community which broke off from Canoga Park in 1987. I live about 1/2 mile from the boundary of Canoga Park and Woodland Hills. I live about a mile from Warner Center. Residents of West Hills, Woodland Hills, and Canoga Park share schools, bus lines, the Orange Line station; they share hospitals - the West Hills Hospital in West Hills, and the Kaiser Hospital in Warner Center. They share shopping centers - Platt Village in West Hills; Fallbrook Mall in West Hills; shopping	West Hills is completely gerrymandered between Supervisorial District 5 and Supervisorial District 3. I would like the Valley to be whole. I have written an article on this for CityWatchLA: https://www.citywatchla.com/index.php/cw/los-angeles/21997-redistricting-la-county-and-the-city-of-la-contiguous-compact-and-communities-of-interest-part-2 (See Attachment A-6.) (See recording for live comments.)

Submitted Public Comments for Zone E Public Hearing

					<p>at Sherman Way and Shoup in Canoga Park is just across the street from a West Hills boundary with Canoga Park. We share Topanga Plaza and other Westfield properties for shopping and restaurants on Topanga Canyon Blvd. We share shopping such as Lowes and other shops at Roscoe and Topanga which are in West Hills; shopping to the south of Roscoe at Topanga is in Canoga Park. My assigned schools - my elementary school is in West Hills; my assigned Junior High School and High School are in Canoga Park. We share parks - we have Shadow Ranch in West Hills; there is Shoup Park on Shoup in Woodland Hills with the closest public swimming pool for my community. We share Warner Park on Topanga where we have the Summer Concerts in the Park.</p>	
--	--	--	--	--	--	--

Submitted Public Comments for Zone E Public Hearing

Carmen Marie Taylor	90002-2142	Watts	The current map and District configuration was designed in 1927...at the time the landscape for Los Angeles was completely. Now, the need for such configurations are outdated. Relieve City Representative for the Fifteenth District from having to "swing so wildly" in order to provide proper and full representation for all of the constituents.	Yes. We want to connect the Watts area with the balance of LA City proper. Similarity in the types of issues, the demographics, shared educational systems, shared community resources i.e. shopping plazas, grocery stores, eateries, businesses and services i.e. car repair and auto parts, doctor offices and other medical facilities.	Historic on several facts. Centrally located. Close to public transportation connectors. The majority of Black Residents have a genealogical link to the community of Watts.	This request for redistricting the community of Watts out of the 15th CD and annex it into CD 9 is definitely picking up momentum. It is worthy of strong consideration. What has now been classified as a movement, has adopted the slogan ...What Time Is It??? 15 to 9". <i>(See recording for live comments.)</i>
Wayne Fishback	-	-	-	-	-	(See Attachment A-7.)

Submitted Public Comments for Zone E Public Hearing

Attachment A-1 begins next page.

Officers

President

Richard H. Close

Vice President

Matt Epstein

Vice President

Jules Feir

Treasurer

John Isen

Secretary

Jay Weitzler

Founded in 1964



SHERMAN OAKS HOMEOWNERS ASSOCIATION

POST OFFICE BOX 5223
SHERMAN OAKS, CALIFORNIA 91413
Information: (818) 377-4590
www.ShermanOaks914.com

Board of Directors

Bob Anderson

Chuck Betz

Richard H. Close

Matt Epstein

Jules Feir

Tom Glick

John Isen

Maria Pavlou Kalban

Marshall Long

Nancy Sogoian

Jay Weitzler



www.facebook.com/soha914

June 29, 2021

Los Angeles County Citizens Redistricting Commission
c/o KH Consulting Group
Post Office Box 56477
Sherman Oaks, CA 91413
tle@crc.lacounty.gov

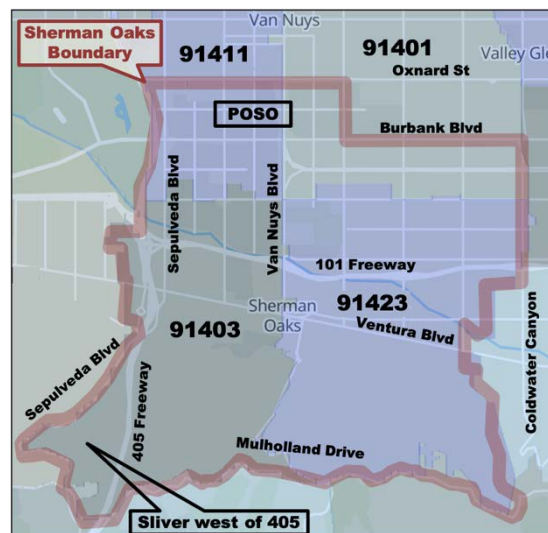
Subject: Sherman Oaks Homeowners Association LA County Redistricting Recommendations

Dear Commissioners,

Sherman Oaks is a united 73,000-person community of interest on the southern border of the San Fernando Valley at the Sepulveda Pass. The Sherman Oaks Homeowners Association (SOHA) has been a voice of the community since 1964 and represents about 2,400 Sherman Oaks families. We care about our community and work together on local projects. SOHA’s monthly meetings draw up to 500 attendees for hotly contested political debates. We have one simple recommendation for the Los Angeles County Citizens Redistricting Commission. We want our community to remain whole and intact, as we are today, in one single San Fernando Valley County Supervisorial District. In 2011, two redistricting options would have split and/or realigned Sherman Oaks, and we asked the 2011 Commission to retain our community in one single San Fernando Valley district. We thank the 2011 Commission for doing just that. We today request that the 2021 Commission ensures that we remain intact in one single San Fernando Valley district during their current redistricting efforts.

The official Los Angeles boundary for Sherman Oaks is shown in *Map 1*. We are a large community that includes hillside and flatland areas, plus two major freeways. Our eastern, southern, and western boundaries follow ZIP Code boundaries. Our northern boundary does not and splits two ZIP Codes.

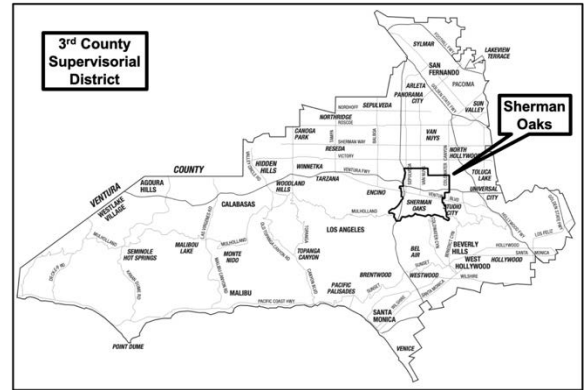
The map highlights two areas of Sherman Oaks that were not consistently maintained as part of our community in all 2011 redistricting. The first area is POSO, Part of Sherman Oaks with about 6,900 residents, which was officially added to Sherman Oaks by City Council action in July 2009 (see Council File 08-2758 in Attachment 1). The second area is the sliver of Sherman Oaks west of the 405 freeway, which is officially part of our community but often ignored during redistricting because the freeway is often considered a more natural western boundary of Sherman Oaks.



Map 1. Sherman Oaks Boundary

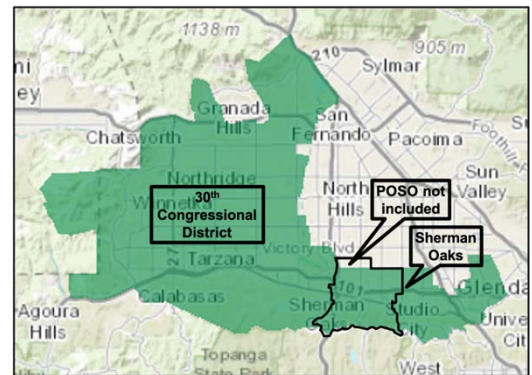
The following paragraphs provide more detailed information justifying why and how the Sherman Oaks community of interest should remain intact in one single LA County Supervisorial district and illustrate how the consistency of our recommendation across federal, state, county, and city redistricting efforts.

Supervisor Sheila Kuehl’s 3rd LA County Supervisorial District – Map 2 shows the current 3rd Los Angeles County Supervisorial District. All of Sherman Oaks including both POSO and the sliver west of the 405 freeway is centrally located in the district. Sherman Oaks and SOHA have strong relationships with Supervisor Kuehl and her staff. For example, for the last four years we have been working closely with her transportation staff on LA Metro’s Sepulveda Transit Corridor Project – a critical rapid transit link between the San Fernando Valley and West Los Angeles. We strongly desire to remain fully intact in a single San Fernando Valley supervisorial district.



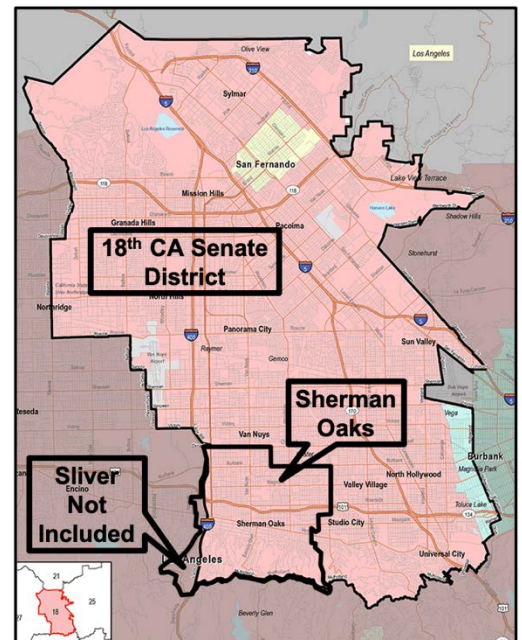
Map 2. Supervisor Sheila Kuehl's Current 3rd LA County Supervisorial District

Congressmember Brad Sherman’s 30th Congressional District – Map 3 shows the current 30th Congressional District. It includes all the Sherman Oaks community except POSO (Part of Sherman Oaks, see Attachment 1). POSO is officially in the Sherman Oaks community, has strong ties to our community of interest, and should be included as part of the community in a single Congressional district. Sherman Oaks, POSO, and SOHA have strong relationships with Congressman Sherman and his staff. For example, we are working together today to advocate for reduced aircraft noise from Van Nuys Airport. We strongly desire to remain fully intact in his district within the San Fernando Valley and have made this recommendation to the 2021 California Citizens Redistricting Commission.



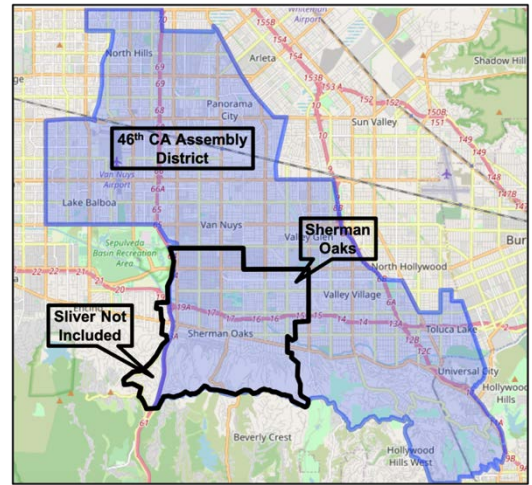
Map 3. Congressman Sherman's Current 30th Congressional District

Senator Bob Hertzberg’s 18th California Senate District – Map 4 shows the current 18th California Senate District. It includes all of Sherman Oaks with POSO except the sliver of Sherman Oaks located west of the 405 freeway. Both POSO and the sliver should be included in a redistricted 18th district in the San Fernando Valley. Sherman Oaks and SOHA again have strong relationships with Senator Hertzberg and his staff. For example, we are working together today to advocate for housing and affordable housing legislation (sometimes daily). We strongly desire to remain fully intact in his district and have made this recommendation to the 2021 California Citizens Redistricting Commission.



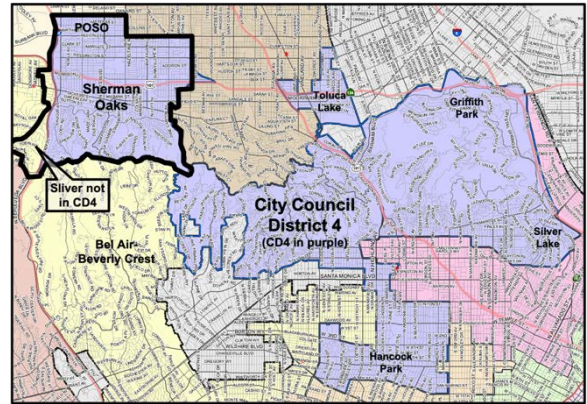
Map 4. Senator Bob Hertzberg's Current 18th California Senate District

Assemblymember Adrin Nazarian's 46th California Assembly District – *Map 5* shows the current 46th California Assembly District. It includes all of Sherman Oaks with POSO except the sliver of Sherman Oaks located west of the 405 freeway. Both POSO and the sliver should be included in a redistricted 46th district in the San Fernando Valley. Sherman Oaks and SOHA again have strong relationships with Assemblymember Nazarian and his staff. For example, we are working together today to advocate for housing and affordable housing legislation (sometimes daily). We strongly desire to remain fully intact in his district and have made this recommendation to the 2021 California Citizens Redistricting Commission.



Map 5. Assemblymember Adrin Nazarian's Current 46th California Assembly District

Councilmember Nithya Raman's 4th LA City Council District – *Map 6* shows the current 4th Los Angeles City Council District (CD4). It includes all of Sherman Oaks with POSO except the sliver of Sherman Oaks located west of the 405 freeway. In 2011 redistricting, the Los Angeles City Council Redistricting Commission recognized Sherman Oaks as an important community of interest and worked to keep it and many other recognized communities of interest intact within City Council Districts (see Attachment 2).



Map 6. Councilmember Nithya Raman's Current 4th LA City Council District

Sherman Oaks and SOHA have strong relationships with Councilmember Raman and her staff across many issues and challenges facing our community. For example, we are currently working with her office on homelessness, community plan updates, development, rapid transit, and traffic improvement. We strongly desire to remain fully intact in one single district and have made this recommendation to the 2021 LA City Council Redistricting Commission.

Thank you for your consideration. Please contact me if you desire further information or have any questions.

Respectfully,

Bob Anderson
Board Member and Chair, Redistricting Committee
Sherman Oaks Homeowners Association
BobHillsideordinance@gmail.com
Mobile: (213) 364-7470

Attachment 1: Los Angeles City Council File 08-2758, Renaming POSO within Greater Sherman Oaks
Attachment 2: Excerpt from Report and Recommendations of the Los Angeles City Council Redistricting Commission, March 2012

cc: Supervisor Sheila Kuehl, Lisa Mandel (3rd District office), Madeleine Moore (3rd District office)

CITY OF LOS ANGELES

CALIFORNIA



ANTONIO R. VILLARAIGOSA
MAYOR

Office of the
CITY CLERK

Council and Public Services
Room 395, City Hall
Los Angeles, CA 90012
General Information - (213) 978-1133
Fax: (213) 978-1040

KONRAD CARTER
Acting Chief, Council and Public Services
Division

www.cityclerk.lacity.org

ATTACHMENT 1
Los Angeles City Council File 08-2758,
Renaming POSO within Greater Sherman Oaks

July 15, 2009

To All Interested Parties:

The City Council adopted the action(s), as attached, under

Council file No. 08-2758, at its meeting held July 14, 2009.

City Clerk
os

30

TO THE COUNCIL OF THE
CITY OF LOS ANGELES

Your **EDUCATION AND NEIGHBORHOODS COMMITTEE**

reports as follows:

EDUCATION AND NEIGHBORHOODS COMMITTEE REPORT relative to an application to rename a community Sherman Oaks.

Recommendations for Council action:

1. APPROVE the application relative to renaming a community Sherman Oaks, roughly located in a neighborhood north of Burbank Boulevard, south of Oxnard Street, east of Sepulveda Boulevard and west of Hazeltine Avenue, with the following boundaries:
 - a. Eastern Boundary – North side of Burbank Boulevard, West side of Hazeltine, North side of Califa/Tiara.
 - b. Northern Boundary – North side of Califa/Tiara. This boundary includes the residences on Vesper Street which may have addresses on Oxnard Boulevard. Califa Street is located along the Western end of the North Boundary. The street does not have passage through to Sepulveda Boulevard which is the Western boundary. The applicants request that a boundary line is extended from the North West corner of the intersection of Califa and Halbrent to Sepulveda Boulevard to the West.
 - c. Exclusion – East and West side of Van Nuys Boulevard consistent with the current exclusion from Magnolia Boulevard through Burbank Boulevard.
 - d. Western Boundary – East side of the 405 Freeway.
2. INSTRUCT all relevant departments to perform the necessary requirements to effectuate the renaming of this community, including but not limited to, the installation of signs.

Fiscal Impact Statement: Neither the Chief Legislative Analyst nor the City Administrative Officer has completed a financial analysis of this report.

Community Impact Statement: Yes

Against Proposal: Van Nuys Neighborhood Council
Sherman Oaks Neighborhood Council

SUMMARY

At its regular meeting held on June 23, 2009, the Education and Neighborhoods Committee considered an application filed by Lorette Healy requesting to change a community name to Sherman Oaks. This community is roughly located in a neighborhood north of Burbank Boulevard, south of Oxnard Street, east of Sepulveda Boulevard and west of Hazeltine Avenue. The properties petitioning for a name change are comprised of approximately 1,855 parcels and are located within two postal zip code areas; 91411 and 91401.

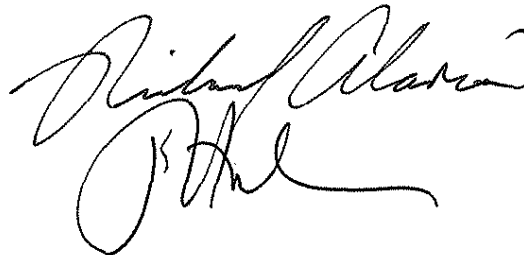
The Office of the City Clerk provided a summary of the application chronology which is attached to the Council file. The application was filed on September 23, 2008 and, after City Clerk staff verified the requisite number of signatures on the petition accompanying the application, it was approved for processing on October 8, 2008. The Department of Neighborhood Empowerment reports that the Sherman Oaks Neighborhood Council, the Van Nuys Neighborhood Council, Lake Balboa Neighborhood Council and Greater Valley Glen Council were all notified of the proposal to rename a portion of Van Nuys to Sherman Oaks. The Sherman Oaks Neighborhood Council and Van Nuys Neighborhood Council held public hearings on January 9, 2009 and January 14, 2009, respectively, and voted to oppose the proposed name change from Van Nuys to Sherman Oaks. Both Neighborhood Councils submitted Community Impact Statements to the Council file. The Lake Balboa Neighborhood Council and the Greater Valley Glen Council did not hold hearings on the subject. Additionally, the City Clerk, Records Management Division, and the Public Works, Bureau of Engineering, submitted reports relative to the application.

During the discussion of this matter, the applicant briefly presented background information concerning the community and addressed related questions from the Committee members. Since the proposed community is located within the boundaries of Council District Two, staff representing Councilmember Wendy Greuel addressed the Committee. The representative of Councilmember Greuel's Office spoke in support of the application and petition to officially rename the community Sherman Oaks and requested a technical amendment to describe the western boundary as the east side of the 405 Freeway. After an opportunity for public comment, the Committee recommended to approve the application to rename a community Sherman Oaks as amended to describe the western boundary as the east side of the 405 Freeway. This matter is now forwarded to the Council for its consideration.

Respectfully submitted,

EDUCATION AND NEIGHBORHOODS COMMITTEE

<u>MEMBER</u>	<u>VOTE</u>
ALARCON:	YES
HAHN:	YES
ZINE:	ABSENT



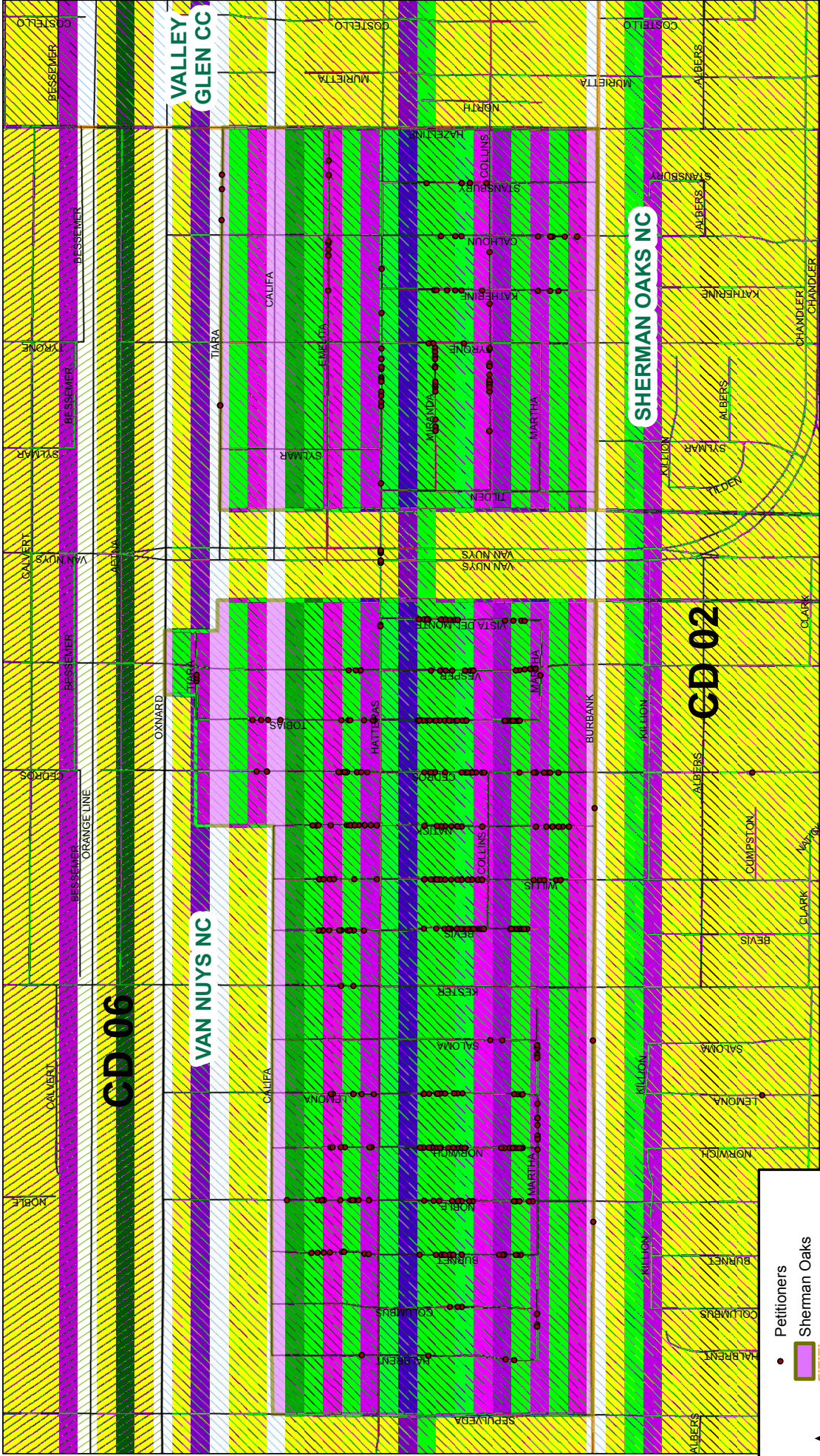
ep
CD 2
08-2758_rpt_en_6-30-09.doc

ADOPTED

JUL 14 2009

LOS ANGELES CITY COUNCIL

- Not Official Until Council Acts -



Legend

- Petitioners (Red dot)
- Sherman Oaks (Orange outline)
- Neighborhood Councils (Color-coded background)
- Freeway (Red line)
- Streets (Black line)
- CD 02 (Green diagonal lines)
- CD 06 (Blue diagonal lines)



Proposed Sherman Oaks Community

Office of the City Clerk
Systems Division

LOS ANGELES CITY COUNCIL
REDISTRICTING COMMISSION



Chair

Arturo Vargas

Vice Chairs

Jacquelyn Dupont-Walker
Rob Kadota

Commissioners

Robert Ahn
Bobbie Jean Anderson
Jose Cornejo
Julie Downey
Christopher Ellison
David Ford
Jerry Gaines
Helen B. Kim
Amber Martinez
Grover McKean
Craig Miller
David Roberti
David Roberts
Ken Sampson
Antonio Sanchez
Mona Soo Hoo
David Trujillo
Michael Trujillo

Executive Director

Andrew Westall

Executive Assistant

Myriam Lopez

Outreach Director

Rani Woods

Technical Director

Nicole Boyle

Media Director

Daniella Masterson

Outreach Staff

Lawrence Joe
Rashad Rucker-Trapp
Paulina Velasco
Steven Wood

ATTACHMENT 2
Excerpt from Report and Recommendations
of the Los Angeles City Council
Redistricting Commission, March 2012

Report and Recommendations
of the
Los Angeles City Council
Redistricting Commission

**Report excerpts from LA City Council 2011 Redistricting Commission
decided to maintain and respect Sherman Oaks as a Community of Interest**

Everybody Counts!

Additionally, the Recommended Plan accomplishes the following:

- Neighborhood Councils are more unified: Of the City's 95 Neighborhood Councils, the number that are divided between Council districts is reduced from 53 to 29, while the number of Neighborhood Councils split between three Council districts is reduced from thirteen to only three. Whereas Encino, Palms, and Lake Balboa are each currently split between three Council districts, each is united within single districts under the Recommended Plan. Overall, a total of 24 Neighborhood Councils that are currently split across multiple districts are united within single districts.
- Preserves communities as established by the Los Angeles City Council: The Recommended Plan identifies and preserves whole the following communities as identified by the City of Los Angeles' community renaming policy, or grandfathered in from previous policies and actions of the City Council [See Appendix J]: Historic Filipinotown, Koreatown, Little Armenia, Little Bangladesh, Little Ethiopia, Little Tokyo, Rose Hill, Sherman Oaks, and Thai Town.
- The opportunities of all voters to elect candidates of their choice is maintained: The number of districts from which Latino communities have an equal opportunity to elect Latino candidates is maintained throughout the City with five majority Latino Citizen Voting Age Population districts and one coalition district. The voting strength of African-Americans has also been maintained in Council Districts 8, 9, and 10, with one majority Black Citizen Voting Age Population district and two coalition districts.
- Maintains an overall deviation of less than 5 percent: Based on the policy decision made by the Commission on February 15 to maintain a 5 percent overall deviation (+/- 2.5 percent) or lower across the City, the Recommended Plan, with an overall deviation of 4.96 percent, goes further than the current Council District boundaries enacted in 2002 which tolerated an overall deviation of 10 percent, a reduction of more that half in keeping with the one person, one vote principle.

Based on the Commission's conclusions, it now recommends that the Council take the following actions:

1. Approve and adopt this "Report and Recommendations of the Los Angeles City Council Redistricting Commission" (the "Report"),
2. Adopt as the City's Decennial Redistricting Plan, the Commission's Recommended Plan discussed in this Report,
3. Adopt an ordinance, as approved by the City Attorney, which establishes Council District boundaries in accordance with this Report.

V. REVIEW OF THE COMMISSION'S RECOMMENDED PLAN

The Recommended Plan Satisfies the Equal Population Principle as Embodied in the United States Constitution

The total population of the City, according to the 2010 Census, is 3,792,621. Divided among the 15 Council districts, the ideal population for each district becomes 252,841. In the Recommended Plan, Council District 12 has a population of 259,073 (+2.46%) and Council District 14 has a population of 246,509 (-2.50%), making the total population deviation for the City 4.96%. Based on the policy decision made by the Commission on February 15 to maintain a 5 percent overall deviation (+/- 2.5 percent) or lower across the City, the Recommended Plan goes further than the current Council District boundaries enacted in 2002 which tolerated an overall deviation of 10 percent, a reduction of more than half in keeping with the one person, one vote principle. The Final Map Recommendation has made good faith efforts to draw equipopulous districts with slight deviations based on the public policy rationales of: keeping at least two-thirds of the Neighborhood Councils whole, including minimizing splits between Council Districts to the extent possible; maintaining and respect communities and neighborhoods that had been identified by the City of Los Angeles' community renaming policy, or grandfathered in from previous policies and actions of the City Council; and compliance with federal, state, and municipal law.

Communities are More Intact and Unified

The Recommended Plan is an important improvement on the existing Council boundaries by significantly reducing the number of Los Angeles Neighborhood Councils that are divided between multiple Council districts. The Commission's adopted database identifies 95 currently certified Neighborhood Councils across the City. Of these 95 Neighborhood Councils, 53 are currently divided across multiple Council districts: 40 split between two districts, and 13 split between three districts. The Final Map Recommendation reduces the number of split Neighborhood Councils from 53 to 29. The number of Neighborhood Councils split between two districts is reduced from 40 to 26, and the number of Neighborhood Councils divided between three districts is reduced from thirteen to three. Three communities that are currently split among three districts - Encino, Palms, and Lake Balboa - are completely united within single districts under the Recommended Plan.

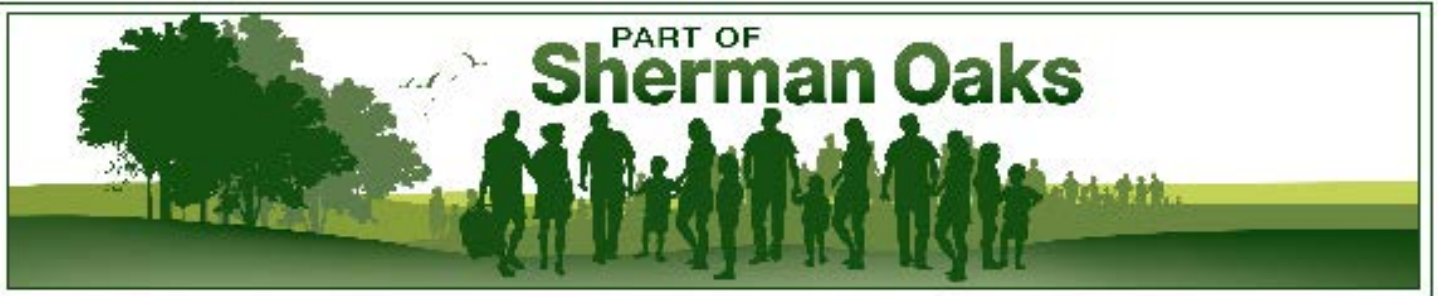
Through its actions on February 15 and February 22, the Commission also made the de facto policy decision to maintain and respect communities and neighborhoods that had been identified by the City of Los Angeles' community renaming policy, or grandfathered in from previous policies and actions of the City Council: Historic Filipinotown, Koreatown, Little Armenia, Little Bangladesh, Little Ethiopia, Little Tokyo, Rose Hill, Sherman Oaks, and Thai Town. [see Appendix J]

Neighborhood Councils Compels Respect for a New Community of Interest

The formation and certification of 95 Neighborhood Councils since the adoption of the Los Angeles City Charter in 1999 created a new opportunity and challenge for the

Submitted Public Comments for Zone E Public Hearing

Attachment A-2 begins next page.

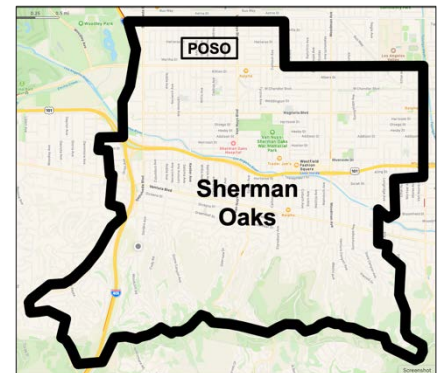


June 30, 2021

Los Angeles County Citizens Redistricting Commission
c/o KH Consulting Group
P. O. Box 56477
Sherman Oaks, CA 91413
tle@crc.lacounty.gov

Dear Commissioners:

As POSO Team Leaders, we represent a neighborhood in North Sherman Oaks (in Los Angeles) referred to as Part of Sherman Oaks ("POSO"). POSO's boundaries are Burbank Blvd (south) to Califa/Tiara (north) and the Fwy 405 (west) to Hazeltine (east). POSO's population is approximately 6900 residents, as shown in the map at the right. We prevailed on July 14, 2009 to have the Los Angeles City Council include POSO in the community of Sherman Oaks. This is documented in Los Angeles City Council File 08-2758 (included as Attachment 1). After our Renaming, we were able to attend the LA City Redistricting Commission meetings in 2010 and 2011 and advocate successfully to be kept whole with Greater Sherman Oaks within Los Angeles City Council District 4.



We are requesting to be united and kept whole with Greater Sherman Oaks in Los Angeles County Supervisorial District #3. POSO has been kept whole with Greater Sherman Oaks in four of the five districts that were redistricted in 2010-2011: (1) California Senate District 18; (2) California Assembly District 46; (3) Los Angeles County Supervisorial District 3; and (4) Los Angeles City Council District 4. Therefore, we request to continue to be kept whole with Greater Sherman Oaks in these four districts. Additionally, we are concurrently asking the CA Redistricting Commission to be united with Greater Sherman Oaks in the Congressional District #30.

We share a community of Interest with Greater Sherman Oaks in many areas, as we highlighted during POSO's 2009 Renaming to Sherman Oaks and those interests remain constant today.

- **Geographical Proximity** - We share our southern border of Burbank Blvd with Greater Sherman Oaks. Our most frequented businesses are all in Sherman Oaks and many within walking distance, and our closest grocery stores and gas stations are in Sherman Oaks.
- **Similarity of Residential Dwellings and Landmarks** - POSO is primarily single-story residential dwellings of similar lot acreage and square footage to homes south of Burbank Blvd. POSO has a low propensity of townhomes and apartments in the neighborhoods on both sides of Burbank Blvd. Our neighborhood north of Burbank was built by the same paving company as south of Burbank Blvd (Malcom Paving 1950 stamped into our sidewalks/curbs).
- **Lack of Similarity to the area north of Califa and Tiara** - The area north of Califa/Tiara is in a commercial and industrial zone. The Orange Bus Line continues along the commercial and industrial corridor and dissects our neighborhood from the community north of the Orange Line.

- **Educational Community** - The children of residents of our neighborhood attend the same public schools (elementary/middle school) as residents from the community south of Burbank (Kester Avenue Elementary & Van Nuys Middle School). The Sherman Oaks Library is our community library.
- **Property Values** – Comps for homes north and south of Burbank Blvd are within 5% - 10% of each other.
- **Property Deeds** – Many deeds in POSO showed Sherman Oaks as the city even before the 2009 Renaming.
- **Sherman Oaks Hospital/Emergency Room** – This is our closest Emergency Hospital and we share this community of interest with Greater Sherman Oaks, including the many medical offices around the hospital.
- **Recreation Activities** – Sherman Oaks Park is our beautiful community Park for children and adults’ school/community athletic teams (i.e., baseball, soccer, jogging, exercise equipment, swimming pool, tennis courts, basketball courts, and Movies in the Park during the summer, etc.). It is our closest park and within walking distance to POSO.
- **The Annual Sherman Oaks Fair** – on Ventura Blvd. POSO supports and looks forward each year to the Annual Fair in October where we commune with neighbors, families and business owners. It is part of our community. Local schools (elementary, middle & high school) put on musical and dance stage performances. Professional music groups perform on the big stage next to the tented food/refreshment gardens. Shop owners, tented vendors and amusement rides available all day.
- **Sherman Oaks Senior Center** is located in the park and serves as a hub for activities/lunches for seniors as well as an auditorium for presentations by Sherman Oaks Homeowners Association (“SOHA”) on issues affecting our community (i.e., housing and retail developments, metro plans, legislation, etc.)
- **Economic Impact and The Sherman Oaks Chamber of Commerce** acknowledges our neighborhood’s positive economic impact on Sherman Oaks. Through patronage of grocery stores, restaurants, banks, shopping malls, dry cleaners, florists and theatres, POSO adds value to the economic vitality and job creation in Sherman Oaks.
- **Local Police Dept National Nite Out** – Every year, neighborhoods host our Local Police and the Senior Lead Officers (“SLOs”) on a rotating basis between streets in POSO and Greater Sherman Oaks. The event nurtures a closer relationship with our Sherman Oaks’ SLOs and local representatives; and families enjoy the evening of fun, food and music.
- **Metro’s Sepulveda Transit Corridor Project “STCP” and Airplane Noise** are both community interests which unite us with Greater Sherman Oaks in our opposition to any elevated tracks above Sepulveda Boulevard. Elevated, noisy, heavy rail trains 20 feet above Sepulveda will be devastating and severely damaging to the Sherman Oaks community. We want the STCP to succeed and enhance the future of our community and we have been working with Greater Sherman Oaks and the Sherman Oaks Homeowners Association (“SOHA”) towards that goal. Reducing airplane noise from both Van Nuys and Burbank Airports is also a share interest.
- **The Sherman Oaks Homeowners Association (“SOHA”)** – We are proud to say Sherman Oaks enjoys a very strong SOHA which is politically active in all issues affecting our community: real estate development, metro and transportation issues, redistricting issues, beautification, vision plans and much more. SOHA works closely with the Chamber of Commerce and Neighborhood Councils. The monthly SOHA meetings are well attended and introduce new local restaurants for dinner. They also have had a very successful Annual Toy Drive for 21 years at Christmastime that benefits the Dept of Children and Family Services. SOHA publishes a very helpful and informative monthly newsletter detailing issues of concern. They have been holding monthly zoom meetings with residents during the pandemic with our elected officials as guest speakers.

The 2011 LA City Council Redistricting Commission said Sherman Oaks is a powerful, unified community of interest that is whole within CD4 (see Attachment 2). The 2011 City Redistricting Commission noted that preserving Sherman Oaks whole as a community of interest was one of four major commission accomplishments. A critical goal for 2021 redistricting is keeping Sherman Oaks, including POSO, whole in a single Council District, as quoted below.

“The Recommended Plan identifies and preserves “whole” the following communities as identified by the City of Los Angeles’ Community Renaming Policy, or grandfathered in from previous policies and actions of the City Council: Historic Filipinotown, Koreatown, Little Armenia, Little Bangladesh, Little Ethiopia, Little Tokyo, Rose Hill, Sherman Oaks, and Thai Town.”

[Andrew Westall, Executive Director, *Report and Recommendations of the Los Angeles City Council Redistricting Commission*, March 1, 2012, page 2]

In conclusion, we ask that the Commission keep our POSO neighborhood “whole and united” with Greater Sherman Oaks and maintain our contiguity and combined voting strength with Greater Sherman Oaks within Los Angeles County Supervisorial District #3. If you have any questions, please feel free to contact Ann O’Connor, P. O. Box 57773, Sherman Oaks, 91413 or call 818-730-2113 or email ann@annoconnor.com

Sincerely,



Ann O’Connor
POSO Team Leader



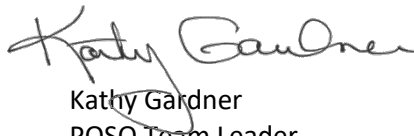
Jason Popeski
POSO Team Leader



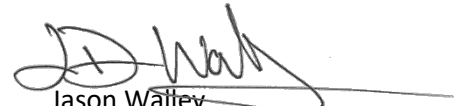
Gail Salem
POSO Team Leader



Mel Liberatore
POSO Team Leader



Kathy Gardner
POSO Team Leader



Jason Walley
POSO Team Leader

Attachment 1: Los Angeles City Council File 08-2758, Renaming POSO within Greater Sherman Oaks

Attachment 2: Excerpt from *Report and Recommendations of the Los Angeles City Council Redistricting Commission*, March 2012

cc: Supervisor Sheila Kuehl, Lisa Mandel (3rd District office), Madeleine Moore (3rd District office)

CITY OF LOS ANGELES

CALIFORNIA



ANTONIO R. VILLARAIGOSA
MAYOR

Office of the
CITY CLERK

Council and Public Services
Room 395, City Hall
Los Angeles, CA 90012
General Information - (213) 978-1133
Fax: (213) 978-1040

KONRAD CARTER
Acting Chief, Council and Public Services
Division

www.cityclerk.lacity.org

ATTACHMENT 1
Los Angeles City Council File 08-2758,
Renaming POSO within Greater Sherman Oaks

July 15, 2009

To All Interested Parties:

The City Council adopted the action(s), as attached, under

Council file No. 08-2758, at its meeting held July 14, 2009.

City Clerk
os

30

TO THE COUNCIL OF THE
CITY OF LOS ANGELES

Your **EDUCATION AND NEIGHBORHOODS COMMITTEE**

reports as follows:

EDUCATION AND NEIGHBORHOODS COMMITTEE REPORT relative to an application to rename a community Sherman Oaks.

Recommendations for Council action:

1. APPROVE the application relative to renaming a community Sherman Oaks, roughly located in a neighborhood north of Burbank Boulevard, south of Oxnard Street, east of Sepulveda Boulevard and west of Hazeltine Avenue, with the following boundaries:
 - a. Eastern Boundary – North side of Burbank Boulevard, West side of Hazeltine, North side of Califa/Tiara.
 - b. Northern Boundary – North side of Califa/Tiara. This boundary includes the residences on Vesper Street which may have addresses on Oxnard Boulevard. Califa Street is located along the Western end of the North Boundary. The street does not have passage through to Sepulveda Boulevard which is the Western boundary. The applicants request that a boundary line is extended from the North West corner of the intersection of Califa and Halbrent to Sepulveda Boulevard to the West.
 - c. Exclusion – East and West side of Van Nuys Boulevard consistent with the current exclusion from Magnolia Boulevard through Burbank Boulevard.
 - d. Western Boundary – East side of the 405 Freeway.
2. INSTRUCT all relevant departments to perform the necessary requirements to effectuate the renaming of this community, including but not limited to, the installation of signs.

Fiscal Impact Statement: Neither the Chief Legislative Analyst nor the City Administrative Officer has completed a financial analysis of this report.

Community Impact Statement: Yes

Against Proposal: Van Nuys Neighborhood Council
Sherman Oaks Neighborhood Council

SUMMARY

At its regular meeting held on June 23, 2009, the Education and Neighborhoods Committee considered an application filed by Lorette Healy requesting to change a community name to Sherman Oaks. This community is roughly located in a neighborhood north of Burbank Boulevard, south of Oxnard Street, east of Sepulveda Boulevard and west of Hazeltine Avenue. The properties petitioning for a name change are comprised of approximately 1,855 parcels and are located within two postal zip code areas; 91411 and 91401.

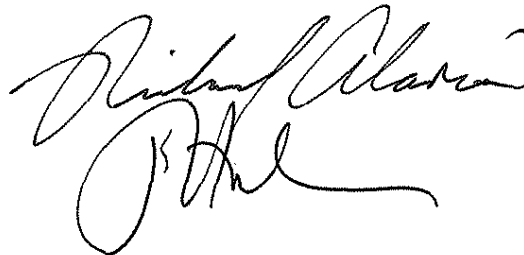
The Office of the City Clerk provided a summary of the application chronology which is attached to the Council file. The application was filed on September 23, 2008 and, after City Clerk staff verified the requisite number of signatures on the petition accompanying the application, it was approved for processing on October 8, 2008. The Department of Neighborhood Empowerment reports that the Sherman Oaks Neighborhood Council, the Van Nuys Neighborhood Council, Lake Balboa Neighborhood Council and Greater Valley Glen Council were all notified of the proposal to rename a portion of Van Nuys to Sherman Oaks. The Sherman Oaks Neighborhood Council and Van Nuys Neighborhood Council held public hearings on January 9, 2009 and January 14, 2009, respectively, and voted to oppose the proposed name change from Van Nuys to Sherman Oaks. Both Neighborhood Councils submitted Community Impact Statements to the Council file. The Lake Balboa Neighborhood Council and the Greater Valley Glen Council did not hold hearings on the subject. Additionally, the City Clerk, Records Management Division, and the Public Works, Bureau of Engineering, submitted reports relative to the application.

During the discussion of this matter, the applicant briefly presented background information concerning the community and addressed related questions from the Committee members. Since the proposed community is located within the boundaries of Council District Two, staff representing Councilmember Wendy Greuel addressed the Committee. The representative of Councilmember Greuel's Office spoke in support of the application and petition to officially rename the community Sherman Oaks and requested a technical amendment to describe the western boundary as the east side of the 405 Freeway. After an opportunity for public comment, the Committee recommended to approve the application to rename a community Sherman Oaks as amended to describe the western boundary as the east side of the 405 Freeway. This matter is now forwarded to the Council for its consideration.

Respectfully submitted,

EDUCATION AND NEIGHBORHOODS COMMITTEE

<u>MEMBER</u>	<u>VOTE</u>
ALARCON:	YES
HAHN:	YES
ZINE:	ABSENT



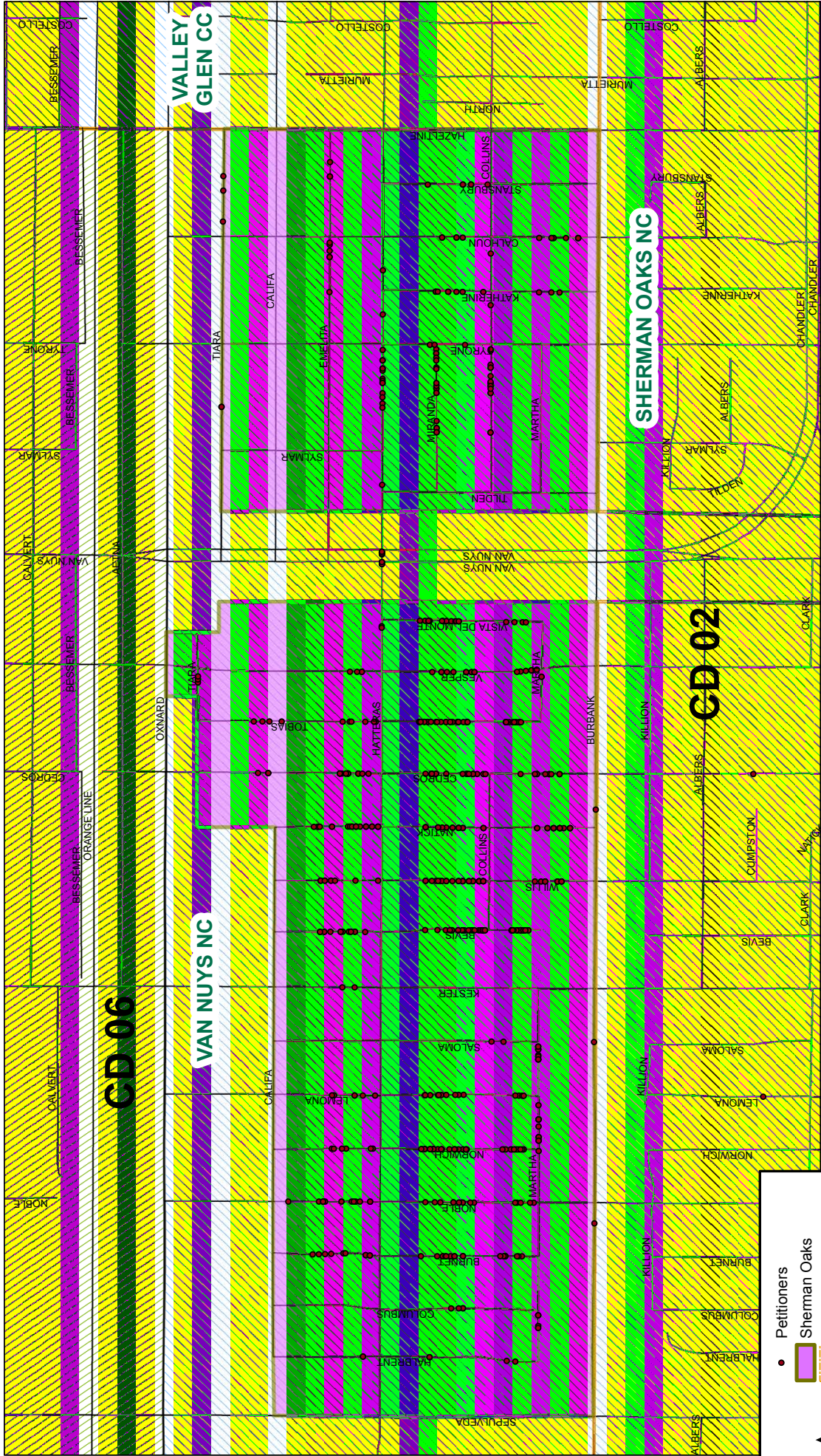
ep
CD 2
08-2758_rpt_en_6-30-09.doc

ADOPTED

JUL 14 2009

LOS ANGELES CITY COUNCIL

- Not Official Until Council Acts -



Legend

- Petitioners
- Sherman Oaks Neighborhood Councils
- Freeway
- Streets
- CD 02
- CD 06



Proposed Sherman Oaks Community

Office of the City Clerk
Systems Division



LOS ANGELES CITY COUNCIL
REDISTRICTING COMMISSION



Chair

Arturo Vargas

Vice Chairs

Jacquelyn Dupont-Walker
Rob Kadota

Commissioners

Robert Ahn
Bobbie Jean Anderson
Jose Cornejo
Julie Downey
Christopher Ellison
David Ford
Jerry Gaines
Helen B. Kim
Amber Martinez
Grover McKean
Craig Miller
David Roberti
David Roberts
Ken Sampson
Antonio Sanchez
Mona Soo Hoo
David Trujillo
Michael Trujillo

Executive Director

Andrew Westall

Executive Assistant

Myriam Lopez

Outreach Director

Rani Woods

Technical Director

Nicole Boyle

Media Director

Daniella Masterson

Outreach Staff

Lawrence Joe
Rashad Rucker-Trapp
Paulina Velasco
Steven Wood

ATTACHMENT 2
Excerpt from Report and Recommendations
of the Los Angeles City Council
Redistricting Commission, March 2012

Report and Recommendations
of the
Los Angeles City Council
Redistricting Commission

**Report excerpts from LA City Council 2011 Redistricting Commission
decided to maintain and respect Sherman Oaks as a Community of Interest**

Everybody Counts!

Additionally, the Recommended Plan accomplishes the following:

- Neighborhood Councils are more unified: Of the City's 95 Neighborhood Councils, the number that are divided between Council districts is reduced from 53 to 29, while the number of Neighborhood Councils split between three Council districts is reduced from thirteen to only three. Whereas Encino, Palms, and Lake Balboa are each currently split between three Council districts, each is united within single districts under the Recommended Plan. Overall, a total of 24 Neighborhood Councils that are currently split across multiple districts are united within single districts.
- Preserves communities as established by the Los Angeles City Council: The Recommended Plan identifies and preserves whole the following communities as identified by the City of Los Angeles' community renaming policy, or grandfathered in from previous policies and actions of the City Council [See Appendix J]: Historic Filipinotown, Koreatown, Little Armenia, Little Bangladesh, Little Ethiopia, Little Tokyo, Rose Hill, Sherman Oaks, and Thai Town.
- The opportunities of all voters to elect candidates of their choice is maintained: The number of districts from which Latino communities have an equal opportunity to elect Latino candidates is maintained throughout the City with five majority Latino Citizen Voting Age Population districts and one coalition district. The voting strength of African-Americans has also been maintained in Council Districts 8, 9, and 10, with one majority Black Citizen Voting Age Population district and two coalition districts.
- Maintains an overall deviation of less than 5 percent: Based on the policy decision made by the Commission on February 15 to maintain a 5 percent overall deviation (+/- 2.5 percent) or lower across the City, the Recommended Plan, with an overall deviation of 4.96 percent, goes further than the current Council District boundaries enacted in 2002 which tolerated an overall deviation of 10 percent, a reduction of more that half in keeping with the one person, one vote principle.

Based on the Commission's conclusions, it now recommends that the Council take the following actions:

1. Approve and adopt this "Report and Recommendations of the Los Angeles City Council Redistricting Commission" (the "Report"),
2. Adopt as the City's Decennial Redistricting Plan, the Commission's Recommended Plan discussed in this Report,
3. Adopt an ordinance, as approved by the City Attorney, which establishes Council District boundaries in accordance with this Report.

V. REVIEW OF THE COMMISSION'S RECOMMENDED PLAN

The Recommended Plan Satisfies the Equal Population Principle as Embodied in the United States Constitution

The total population of the City, according to the 2010 Census, is 3,792,621. Divided among the 15 Council districts, the ideal population for each district becomes 252,841. In the Recommended Plan, Council District 12 has a population of 259,073 (+2.46%) and Council District 14 has a population of 246,509 (-2.50%), making the total population deviation for the City 4.96%. Based on the policy decision made by the Commission on February 15 to maintain a 5 percent overall deviation (+/- 2.5 percent) or lower across the City, the Recommended Plan goes further than the current Council District boundaries enacted in 2002 which tolerated an overall deviation of 10 percent, a reduction of more than half in keeping with the one person, one vote principle. The Final Map Recommendation has made good faith efforts to draw equipopulous districts with slight deviations based on the public policy rationales of: keeping at least two-thirds of the Neighborhood Councils whole, including minimizing splits between Council Districts to the extent possible; maintaining and respect communities and neighborhoods that had been identified by the City of Los Angeles' community renaming policy, or grandfathered in from previous policies and actions of the City Council; and compliance with federal, state, and municipal law.

Communities are More Intact and Unified

The Recommended Plan is an important improvement on the existing Council boundaries by significantly reducing the number of Los Angeles Neighborhood Councils that are divided between multiple Council districts. The Commission's adopted database identifies 95 currently certified Neighborhood Councils across the City. Of these 95 Neighborhood Councils, 53 are currently divided across multiple Council districts: 40 split between two districts, and 13 split between three districts. The Final Map Recommendation reduces the number of split Neighborhood Councils from 53 to 29. The number of Neighborhood Councils split between two districts is reduced from 40 to 26, and the number of Neighborhood Councils divided between three districts is reduced from thirteen to three. Three communities that are currently split among three districts - Encino, Palms, and Lake Balboa - are completely united within single districts under the Recommended Plan.

Through its actions on February 15 and February 22, the Commission also made the de facto policy decision to maintain and respect communities and neighborhoods that had been identified by the City of Los Angeles' community renaming policy, or grandfathered in from previous policies and actions of the City Council: Historic Filipinotown, Koreatown, Little Armenia, Little Bangladesh, Little Ethiopia, Little Tokyo, Rose Hill, Sherman Oaks, and Thai Town. [see Appendix J]

Neighborhood Councils Compels Respect for a New Community of Interest

The formation and certification of 95 Neighborhood Councils since the adoption of the Los Angeles City Charter in 1999 created a new opportunity and challenge for the

Submitted Public Comments for Zone E Public Hearing

Attachment A-3 begins next page.



July 20, 2021

Los Angeles County Citizens Redistricting Commission
P.O. Box 56447
Sherman Oaks, CA 91413

SUBJECT: Los Angeles County Redistricting Plans

Dear Commissioners,

The Valley Industry and Commerce Association (VICA) looks forward to working with you regarding 2021 Redistricting Commission for Los Angeles County. The San Fernando Valley is a unique economically vibrant and ethnically diverse community with distinct needs from the Westside to downtown Los Angeles. The 1.8 million residents of the Valley come from across the globe and work in a myriad of industries but hold a common identity as part of the San Fernando Valley.

Bound by the Santa Susana Mountains to the north and west, Mulholland Drive to the south, and the San Gabriel Mountains to the east, the Valley is a distinct geographic area that cannot simply be piecemealed into majority Westside and downtown Los Angeles districts. The cities of Burbank, Calabasas, Glendale, Hidden Hills, and San Fernando must be respected as unique municipalities that share these geographic boundaries.

Recognition of the Valley's individuality is far from new. The Los Angeles Unified School District and Los Angeles Police Department already divide the Valley into its own bloc. More than 400 nonprofit groups recognize the Valley's regional individuality and distinguish our communities and cities from the southern City of Los Angeles.

VICA supports the following principles for the Los Angeles County's 2021 Redistricting Process:

1. The San Fernando Valley is a geographical area roughly bound by the Santa Susana Mountains to the north and west, the Mulholland Drive to the south, and the San Gabriel Mountains to the east. It lies wholly within Los Angeles County;
2. The redistricting process of the County districts is a public process, and VICA must engage in this process in order to advance our membership's goals and improve representation in the San Fernando Valley;
3. VICA supports the creation of districts that maximize the connection that legislators have with the San Fernando Valley;
4. Our community is best served by a redistricting that maximized the number of districts that are either wholly within the Valley or in which the Valley is the most influential voter bloc;
5. To ensure full and adequate representation for the San Fernando Valley, we support Valley-only districts;
6. If it is necessary to merge one Valley seat with areas outside of the Valley, the preference is to have a minimum of 50% of that district within the San Fernando Valley;
7. VICA's goals for redistricting are non-partisan and are only to be shaped by the interest of maximizing representation and advancing goals of Valley businesses and residents;

8. All recognized communities should be kept together as part of compact and contiguous districts which shall recognize geographic features and natural boundaries.

It is clear that the San Fernando Valley would be best served as its own district. In the history of Los Angeles County, the San Fernando Valley has only been represented by one Supervisor who called the San Fernando Valley home.

Based on current estimates using the American Community Survey 2014-2018 ACS 5-Year Data Profile, the San Fernando Valley contained 1,862,348 residents in 2018.

The demographics of the San Fernando Valley are:

Hispanic Origin 42.1%
White 40.3%
Asian & Pacific Islander 11.1%
Black 3.7%
Other 2.8%

As its own district, the San Fernando Valley would be a majority minority district.

Thank you for your consideration. We look forward to your support for plans that respect the distinctive communities of the San Fernando Valley.

Sincerely,

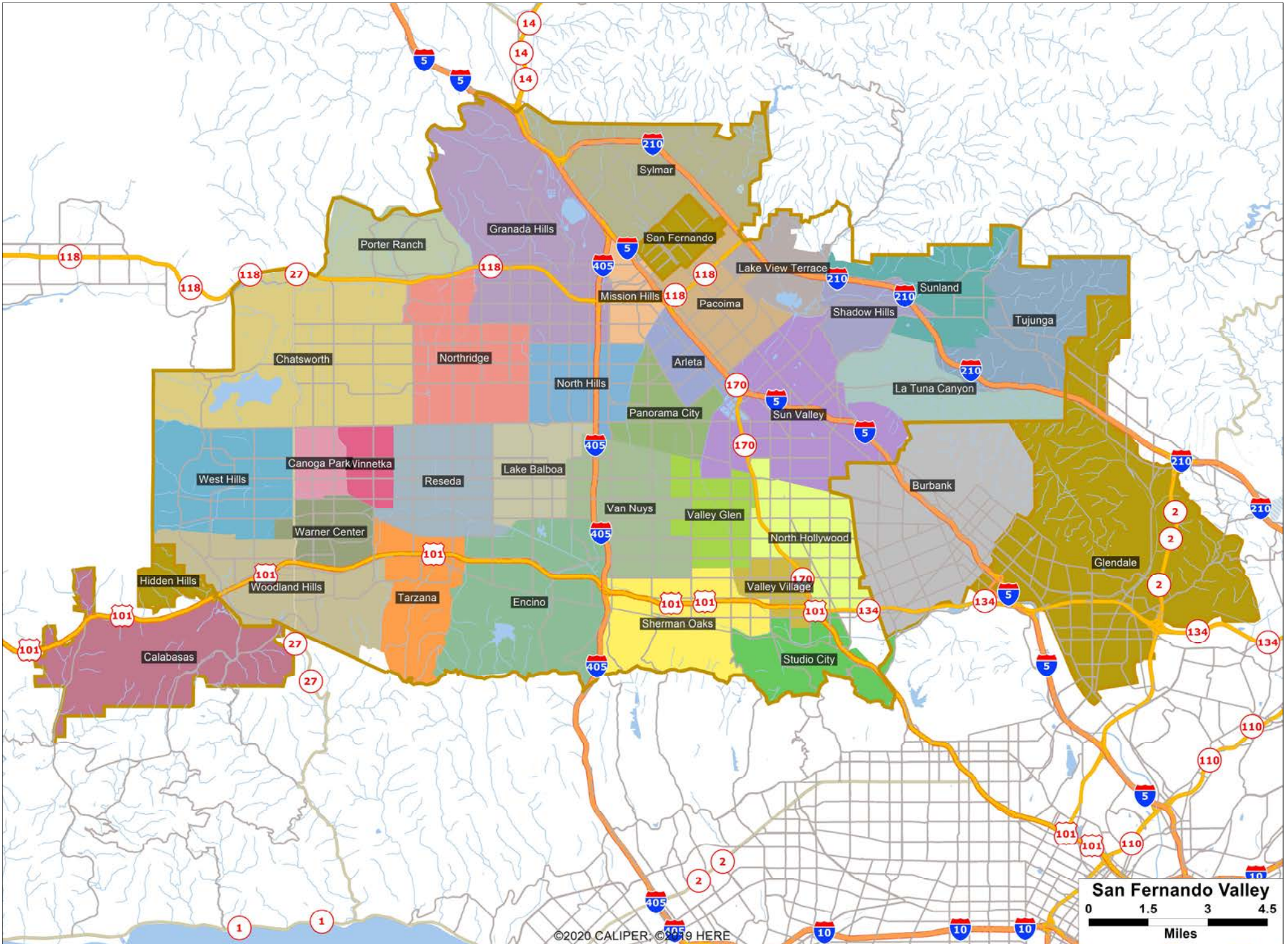


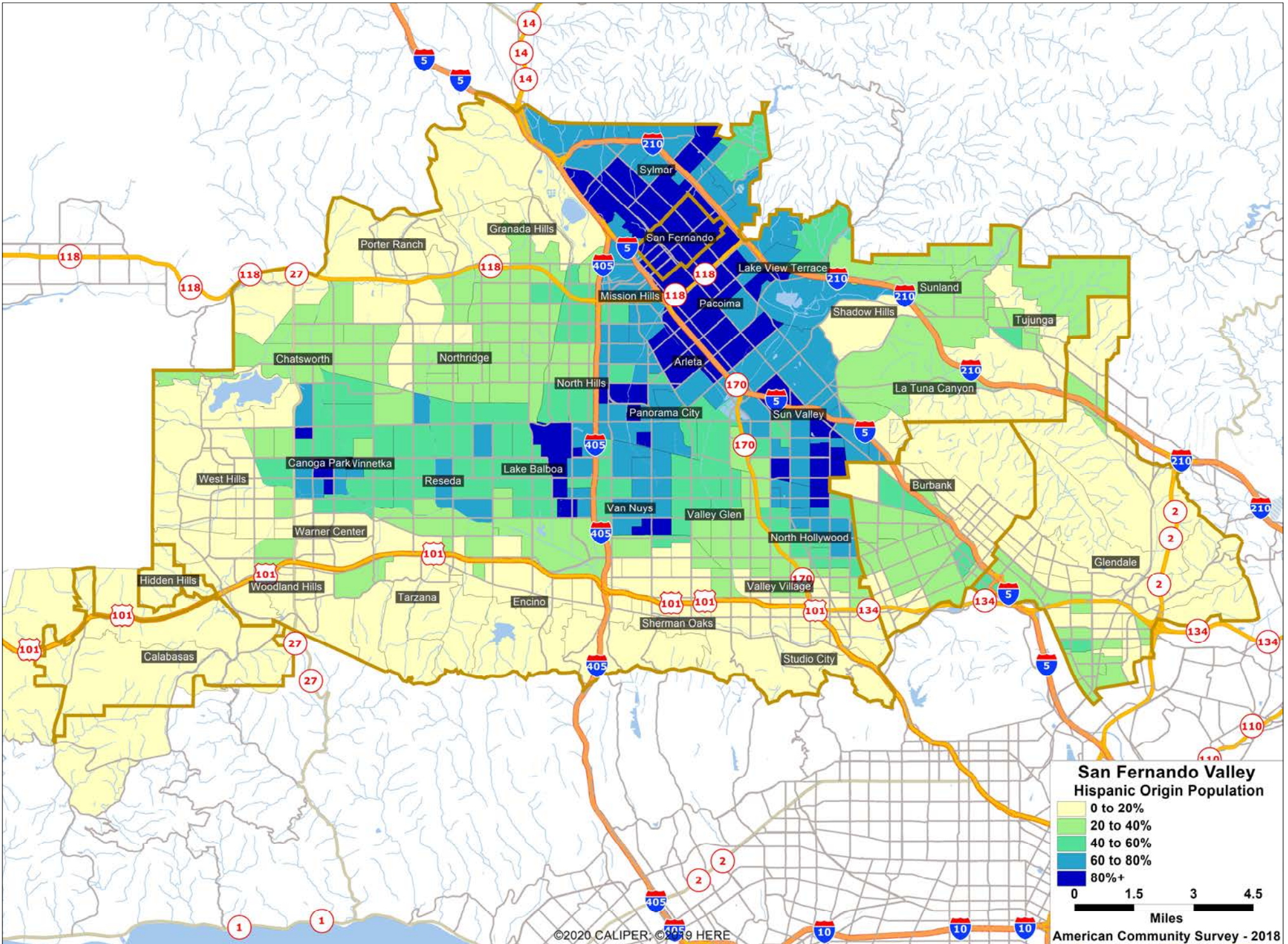
Brad Rosenheim
VICA Chair

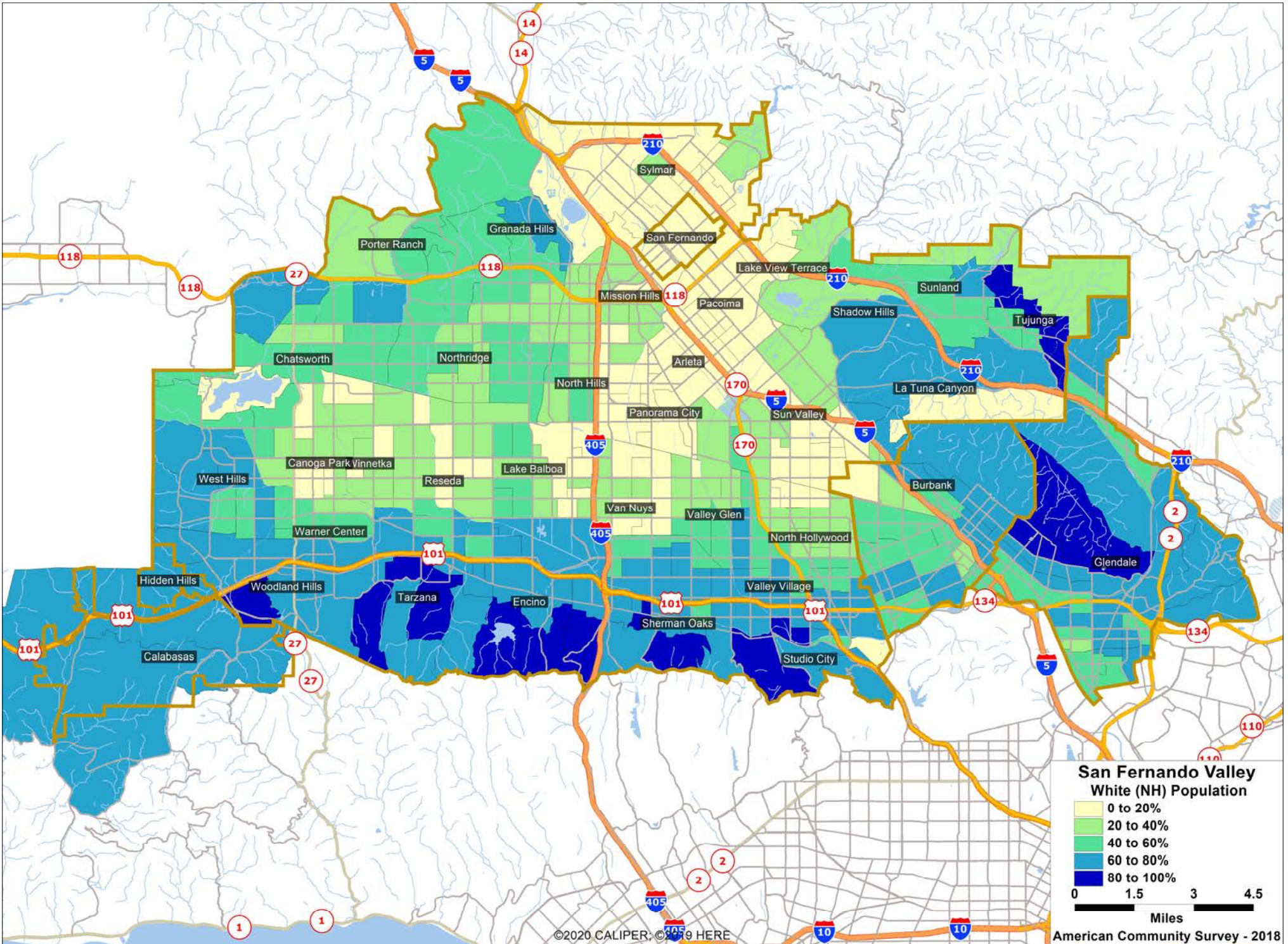


Stuart Waldman
VICA President

	2010 Census			2018			Hispanic Origin		White (NH)		Asian & Pacific Islander (NH)		Black (NH)		Other (NH)	
	Population	Population	Growth													
City of Burbank	103,340	104,275	0.9%	24,720	23.7%	59,122	56.7%	12,796	12.3%	2,676	2.6%	4,961	4.8%			
City of Calabasas	23,058	24,077	4.4%	1,993	8.3%	18,294	76.0%	2,284	9.5%	189	0.8%	1,317	5.5%			
City of Glendale	191,719	200,372	4.5%	36,378	18.2%	124,307	62.0%	30,777	15.4%	3,099	1.5%	5,811	2.9%			
City of Los Angeles (SFV total)	1,426,163	1,507,405	5.7%	698,067	46.3%	547,149	36.3%	160,006	10.6%	62,251	4.1%	39,932	2.6%			
City of San Fernando	23,645	24,585	4.0%	22,874	93.0%	1,098	4.5%	274	1.1%	219	0.9%	120	0.5%			
Unincorporated Hidden Hills	1,856	1,634	-12.0%	127	7.8%	1,428	87.4%	65	4.0%	-	0.0%	14	0.9%			
Total - San Fernando Valley	1,769,781	1,862,348	5.2%	784,159	42.1%	751,398	40.3%	206,202	11.1%	68,434	3.7%	52,155	2.8%			
<i>City of Los Angeles Communities</i>	2010 Census	2018														
	Population	Population	Growth	Hispanic Origin		White (NH)		Asian & Pacific Islander (NH)		Black (NH)		Other (NH)				
Arleta	31,187	32,949	5.6%	26,940	81.8%	2,214	6.7%	3,171	9.6%	242	0.7%	382	1.2%			
Canoga Park	50,546	56,007	10.8%	34,979	62.5%	11,350	20.3%	6,410	11.4%	2,054	3.7%	1,214	2.2%			
Chatsworth	34,645	38,043	9.8%	9,678	25.4%	18,559	48.8%	6,630	17.4%	1,651	4.3%	1,525	4.0%			
Encino	47,224	51,416	8.9%	6,369	12.4%	37,686	73.3%	3,859	7.5%	1,588	3.1%	1,914	3.7%			
Granada Hills	48,421	50,022	3.3%	15,003	30.0%	22,553	45.1%	8,860	17.7%	2,186	4.4%	1,420	2.8%			
La Tuna Canyon	3,851	4,333	12.5%	1,168	27.0%	2,604	60.1%	395	9.1%	111	2.6%	55	1.3%			
Lake Balboa	42,271	46,165	9.2%	25,634	55.5%	12,737	27.6%	4,173	9.0%	1,949	4.2%	1,672	3.6%			
Lake View Terrace	16,924	16,830	-0.6%	11,766	69.9%	2,273	13.5%	1,010	6.0%	1,555	9.2%	226	1.3%			
Mission Hills	18,459	19,199	4.0%	12,555	65.4%	3,644	19.0%	2,240	11.7%	348	1.8%	412	2.1%			
North Hills	70,605	77,428	9.7%	46,743	60.4%	15,384	19.9%	10,803	14.0%	3,090	4.0%	1,408	1.8%			
North Hollywood	110,457	107,571	-2.6%	55,016	51.1%	36,862	34.3%	8,255	7.7%	5,389	5.0%	2,049	1.9%			
Northridge	68,055	73,054	7.3%	24,079	33.0%	29,318	40.1%	12,503	17.1%	4,991	6.8%	2,163	3.0%			
Pacoima	72,946	74,750	2.5%	67,943	90.9%	1,900	2.5%	1,729	2.3%	2,631	3.5%	547	0.7%			
Panorama City	71,194	71,639	0.6%	52,223	72.9%	6,559	9.2%	10,209	14.3%	2,264	3.2%	384	0.5%			
Porter Ranch	21,060	24,231	15.1%	2,291	9.5%	10,683	44.1%	9,223	38.1%	1,189	4.9%	845	3.5%			
Reseda	77,299	82,962	7.3%	41,709	50.3%	24,828	29.9%	10,737	12.9%	3,306	4.0%	2,382	2.9%			
Shadow Hills	3,819	3,549	-7.1%	500	14.1%	2,608	73.5%	309	8.7%	15	0.4%	117	3.3%			
Sherman Oaks	60,355	66,537	10.2%	9,420	14.2%	45,399	68.2%	4,879	7.3%	3,545	5.3%	3,294	5.0%			
Studio City	35,970	39,290	9.2%	3,647	9.3%	29,053	73.9%	3,306	8.4%	1,524	3.9%	1,760	4.5%			
Sun Valley	58,601	56,361	-3.8%	39,787	70.6%	11,349	20.1%	3,682	6.5%	791	1.4%	752	1.3%			
Sunland	19,714	20,441	3.7%	5,582	27.3%	11,735	57.4%	2,311	11.3%	250	1.2%	563	2.8%			
Sylmar	78,893	82,919	5.1%	65,974	79.6%	9,772	11.8%	3,934	4.7%	2,091	2.5%	1,148	1.4%			
Tarzana	25,970	27,691	6.6%	4,354	15.7%	18,494	66.8%	2,074	7.5%	1,678	6.1%	1,091	3.9%			
Toluca Lake	13,928	16,103	15.6%	2,825	17.5%	10,363	64.4%	1,227	7.6%	941	5.8%	747	4.6%			
Tujunga	25,870	25,287	-2.3%	6,442	25.5%	15,996	63.3%	1,738	6.9%	532	2.1%	579	2.3%			
Valley Glen	50,354	51,055	1.4%	21,190	41.5%	23,742	46.5%	2,633	5.2%	1,886	3.7%	1,604	3.1%			
Valley Village	25,404	27,769	9.3%	6,031	21.7%	17,028	61.3%	1,869	6.7%	1,559	5.6%	1,282	4.6%			
Van Nuys	84,326	88,196	4.6%	53,986	61.2%	21,991	24.9%	6,078	6.9%	4,466	5.1%	1,675	1.9%			
Warner Center	28,496	35,044	23.0%	8,891	25.4%	16,646	47.5%	6,161	17.6%	1,963	5.6%	1,383	3.9%			
West Hills	43,730	46,679	6.7%	6,414	13.7%	29,367	62.9%	6,888	14.8%	1,862	4.0%	2,148	4.6%			
Winnetka	46,976	50,695	7.9%	23,914	47.2%	13,482	26.6%	9,529	18.8%	2,299	4.5%	1,471	2.9%			
Woodland Hills	38,613	43,190	11.9%	5,014	11.6%	30,970	71.7%	3,181	7.4%	2,305	5.3%	1,720	4.0%			





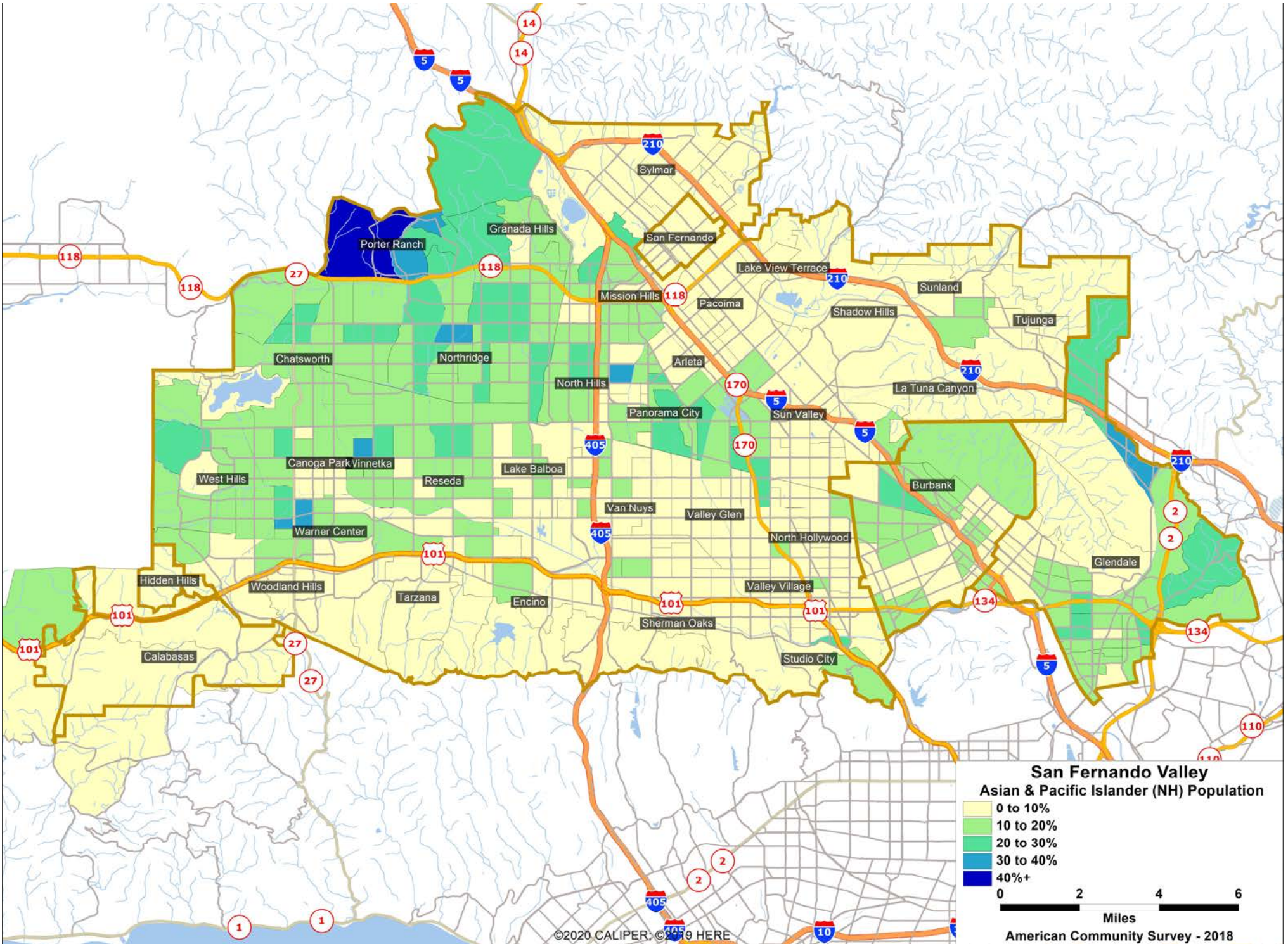


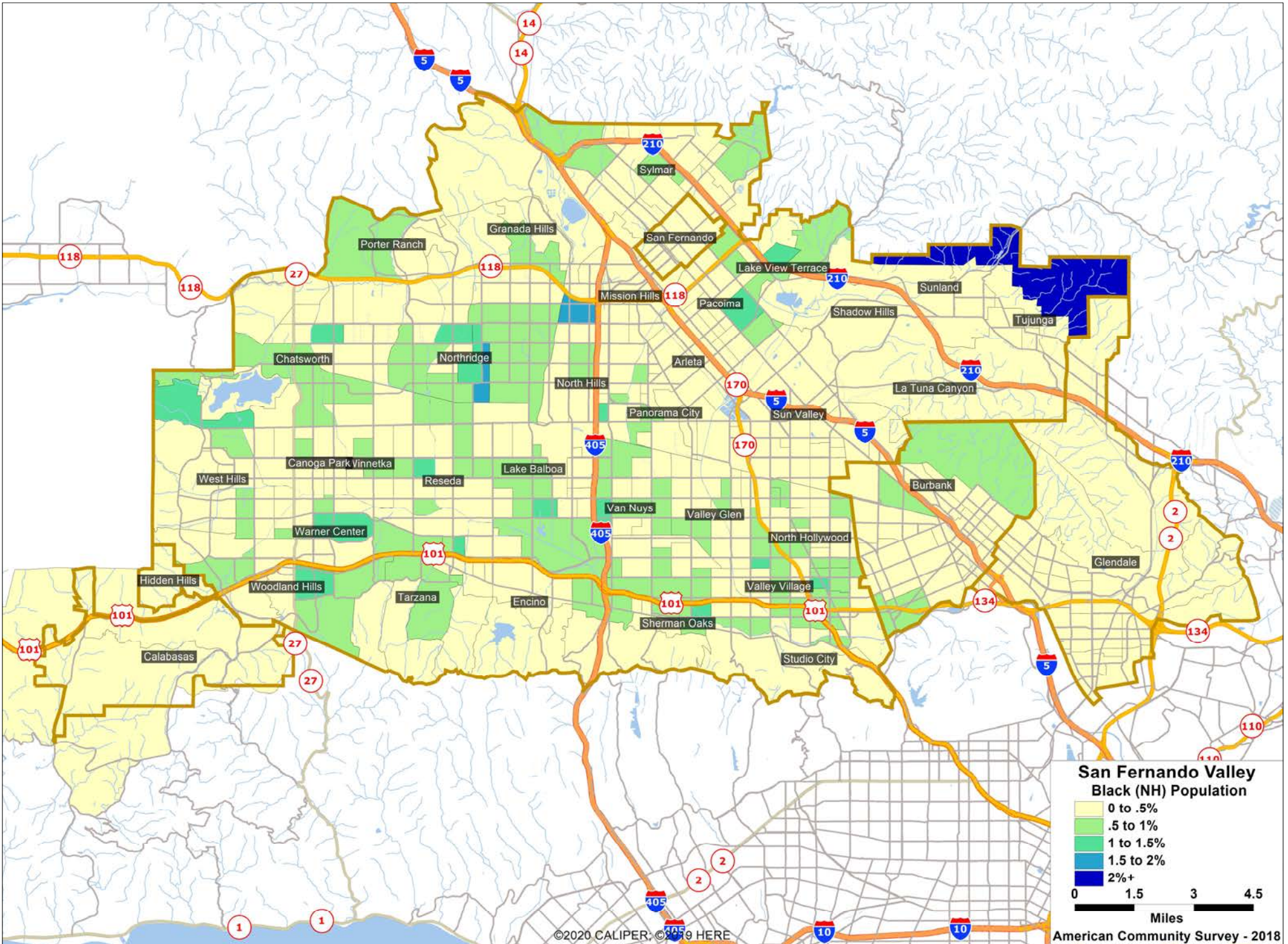
**San Fernando Valley
White (NH) Population**

0 to 20%
20 to 40%
40 to 60%
60 to 80%
80 to 100%

0 1.5 3 4.5 Miles

American Community Survey - 2018





Submitted Public Comments for Zone E Public Hearing

Attachment A-4 begins next page.



Kagel Canyon Civic Association

KCCA BOARD

William Slocum
President

Susan Friend
Vice President

Mary Sargent
Recording Secretary

Open
Corresponding Secretary

Natasha Aasadore
Treasurer

DIRECTORS

Chris Cookson
Michele DeLorimier

Don Ecker

Jeff Leeson

Kit Paull

Ralf Quint

Marlene Rade

Nancy Verna

David Von St

July 19, 2021

Los Angeles County Citizens Redistricting Commission (CRC)
c/o tle@crc.lacounty.gov
Los Angeles, CA

Re: Redistricting (Zone C)

Dear Commissioners,

I write today on behalf of the **Kagel Canyon Civic Association (KCCA)** to express our desire to remain in the 5th District.

Our community, located in the northeast San Fernando Valley, has been well served by sharing the same Supervisor as our immediately surrounding communities. Together, we all share very similar needs and interests. We hope that you will continue this tradition during your current evaluation, as it benefits not only Kagel Canyon but also our direct neighbors.

Thank you for all that you do on behalf of the citizens of Los Angeles County.

Sincerely,

William R. Slocum
President
Kagel Canyon Civic Association

Submitted Public Comments for Zone E Public Hearing

Attachment A-5 begins next page.

July 19, 2021

Honorable Co-Chairs and Members of the Commission:

I am a resident of Porter Ranch in the North San Fernando Valley, a small business owner, and a former Board President of the Porter Ranch Neighborhood Council. I would like to go on record requesting that the Redistricting Commission keep Porter Ranch and other communities of the north San Fernando Valley together in the 5th supervisorial district as we are very much a Community of Interest. Our communities share many common interests and concerns and are woven together by overlapping county service needs. We also share strong social and economic interests.

The communities of the North San Fernando Valley have partnered in advocating for much needed public transit, infrastructure initiatives, and wildfire preparedness and protection services, which are unique to foothill communities like ours. Most county programs we access impact the region as a whole and are not specific to one community. It is in the best interests of this community that we be able to advocate as one voice and work with only one Supervisor.

I thank you for taking the time to hear my concerns and hope you will continue to engage our community and local elected representatives as you proceed in making these critical decisions.

Regards,

A handwritten signature in cursive script that reads "Issam Najm".

Issam Najm, Ph.D.

Resident, Porter Ranch

issamnajm@hotmail.com

Submitted Public Comments for Zone E Public Hearing

Attachment A-6 begins next page.

Dear Honorable Commissioners,

I believe that I have attended two previous meetings of your Commission. I have written two articles for CityWatchLA on Redistricting. Please understand, that when I submit an article to CityWatchLA, they have the write to change or to delete titles and graphics, etc., in the editing process.

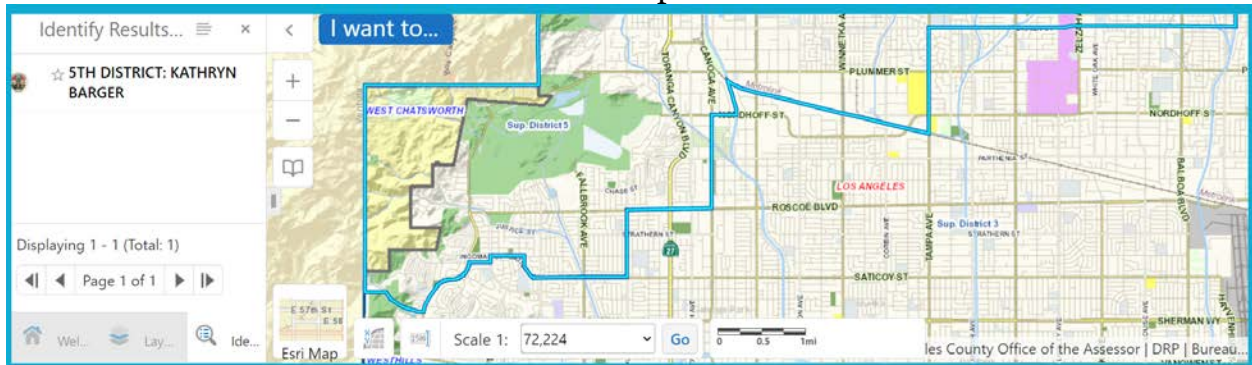
These are the two articles that I authored for CityWatchLA:

[Redistricting LA County and the City of LA: 'Contiguous, Compact, and Communities of Interest' - Part 1 \(citywatchla.com\)](#)

[Redistricting LA County and the City of LA: 'Contiguous, Compact, and Communities of Interest' - Part 2 \(citywatchla.com\)](#)

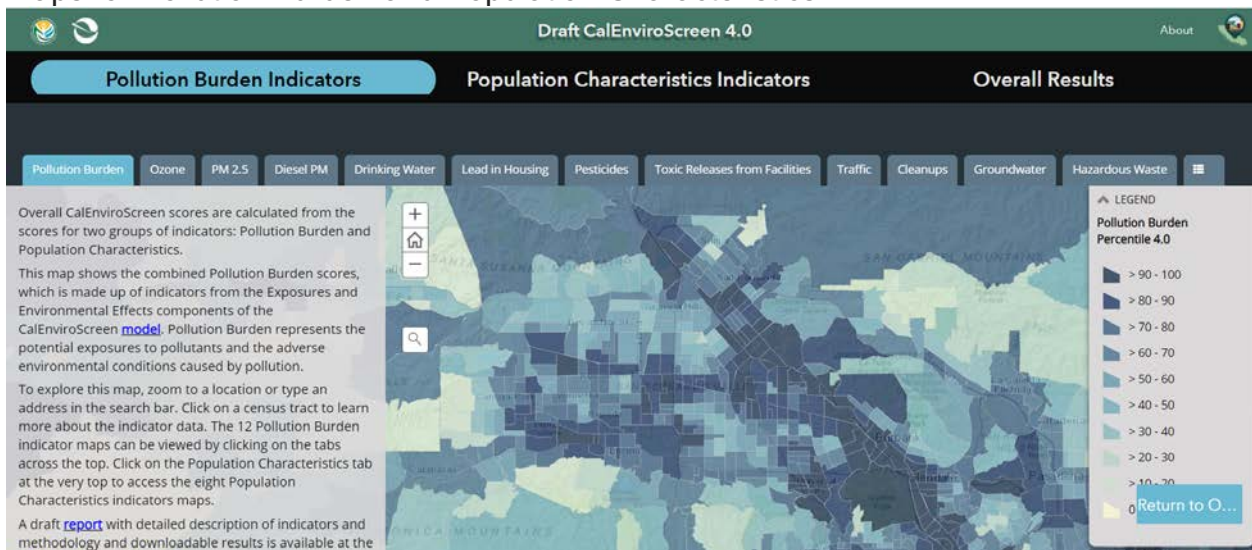
I am going to attach the original word file that I submitted to them for the second article because it pertains more to redistricting Los Angeles County. It was my hope that these articles would bring more attention to your process.

There were a couple of graphics left out of the second article. The most important one is of West Hills and how it is divided into two Supervisorial Districts.

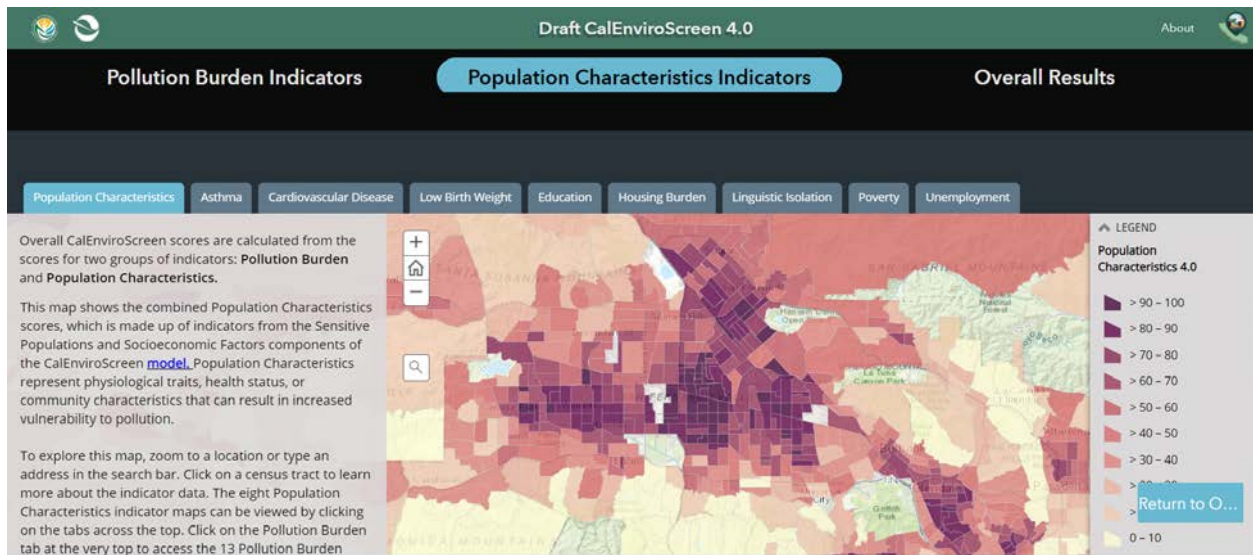


You can see the street lines by the turquoise blue color on the above map.

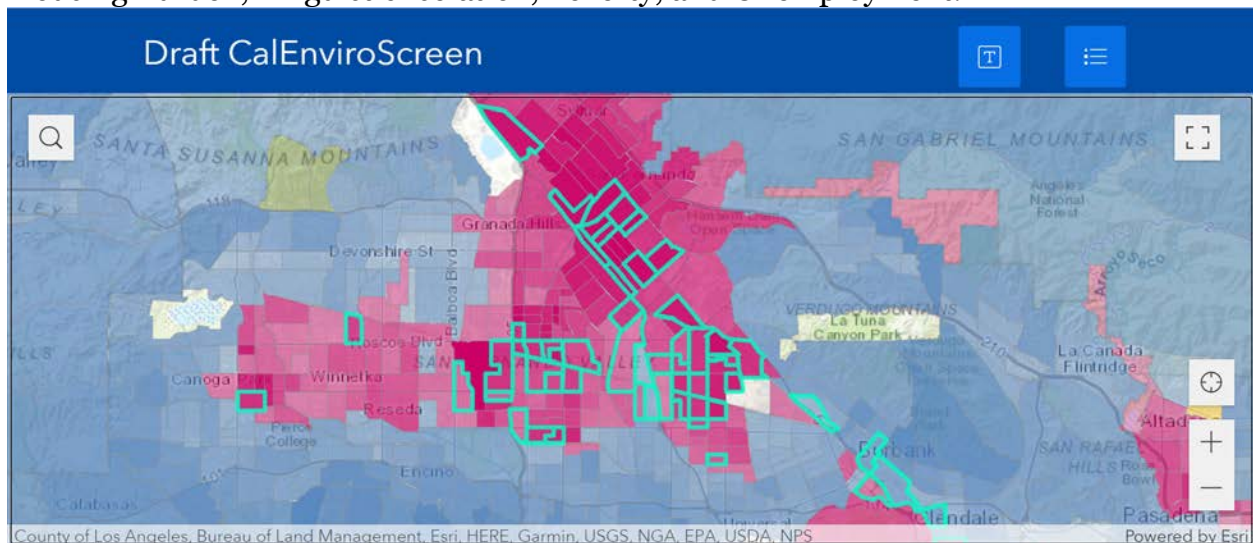
Other important screen shots that I took from various maps include the CalEnviroScreen maps for Pollution Burden and Population Characteristics.



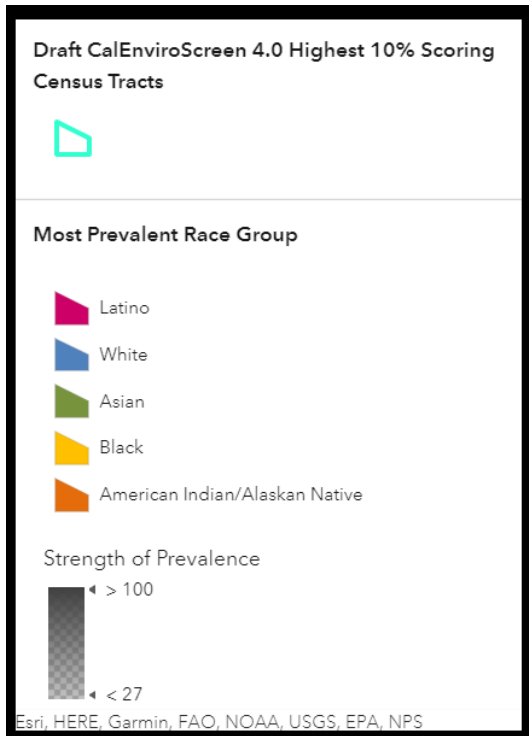
This map above shows the Pollution Burden of the San Fernando Valley to the left of the screen.



This map shows the Population Characteristics of the San Fernando Valley to the left of the screen. It shows the individual tabs that you can click on for things like Education, Housing Burden, Linguistic Isolation, Poverty, and Unemployment.

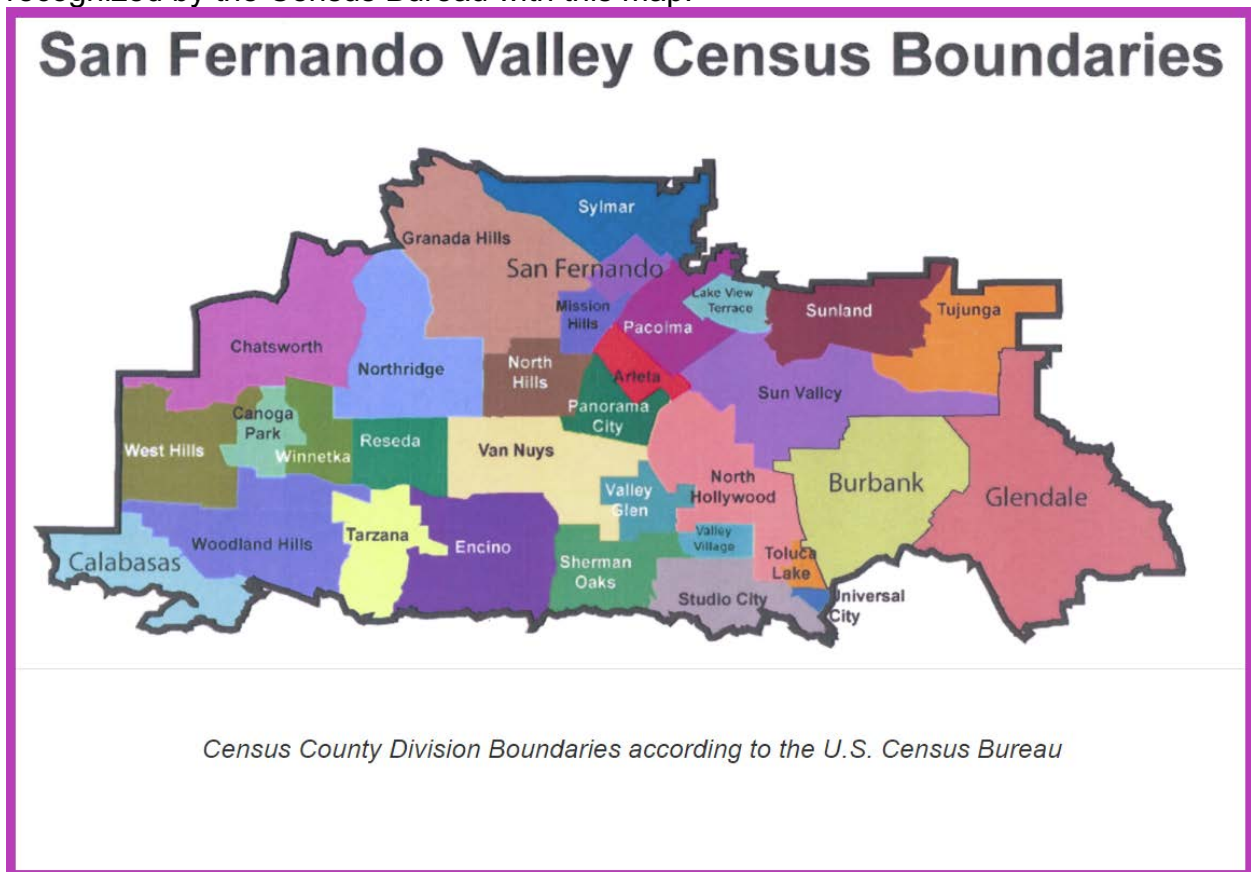


This map shows the Race / Ethnic Diversity of the San Fernando Valley to the best I could show it in a screen shot without a mapping tool.



This is the legend for the Race / Ethnicity tool above.

According to Congressman Brad Sherman's website, the San Fernando Valley is recognized by the Census Bureau with this map:



I believe that the County should also consider Neighborhood Council boundaries in their drawing of maps for the County.



These are the Neighborhood Council boundaries for what is considered the San Fernando Valley areas - Regions 1 - 4. This map would need to be compared with the Census map of the San Fernando Valley by the Census Bureau.

By drawing a San Fernando Valley District if it contains 2 million people, the District would be "Contiguous, Compact, Communities of Interest" that is ethnically and politically diverse.

I do not have the data on political parties that you must consider when redistricting the Supervisorial seats. I hope that information is made available to the public at your meetings.

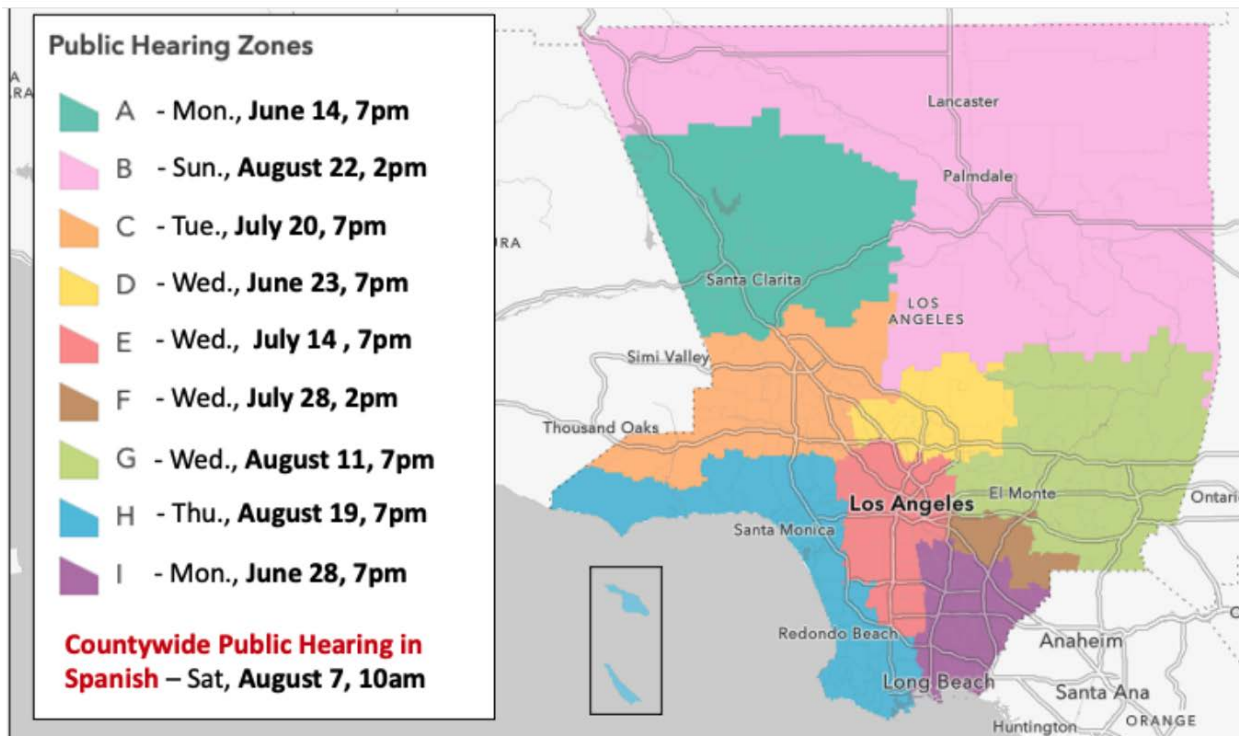
Respectfully submitted,

Christine L. Rowe aka: Chris Rowe

43 year resident of West Hills, California

B.S. in Health Education - CSUN

Redistricting LA County and the City of LA: 'Contiguous, Compact, and Communities of Interest' - Part 2



LOCAL GOVERNMENT-This is a map of Los Angeles County with the dates of the Los Angeles County Redistricting Committee meetings by area.

Where were the residents and other stakeholders? I attended two meetings this week on Redistricting, and since we are unable to see the participants via ZOOM (their names or part of their phone numbers show up on the top of the ZOOM screen from my view) only when they speak, it is impossible for the public to know who was logged on by computer or by phone. This article is not meant to be written in the manner of a professional reporter, but rather from a participant's point of view.

In the first meeting that I attended with the Los Angeles County Citizens Redistricting Commission on Monday night, I believe I only heard about three public speakers which includes my comments.

At the second meeting I attended with the Los Angeles City Council Redistricting Commission, I believe I only heard about 15 public speakers. It is not clear how many public speakers are present because, to the best of my understanding, some callers may use more than one name or more than one method of entering the ZOOM meeting.

The Los Angeles County Citizens Redistricting Commission Meeting – Monday, June 26, 2021

On Monday, June 26th, 2021, there were two meetings on the same night – the Los Angeles County Citizens Redistricting Commission, and the Los Angeles City Council Redistricting Commission. I chose to attend the Los Angeles County Citizens Redistricting Commission meeting Monday night which was for Area “I” on the map – shown above in purple. That meeting started at about 7:02 pm via ZOOM, and they adjourned by 8:02 pm. I believe that there were only about **three** public comments at that Los Angeles County Citizens Redistricting meeting?

During that meeting, Commissioners and staff gave a presentation on an overview of Redistricting, and the 5 Principles: 1) each of the five Supervisorial districts must be of equal population; 2) each District must comply with the requirements of the Federal Voting Act; 3) the districts should be geographically contiguous; 4) there must be both the geographic integrity of cities and include local communities of interest; and 5) the areas should be geographically compact.

They also stated that the districts must not only be reasonably balanced with about 2 million people in each District, but that different racial and ethnic groups should be given appropriate representation.

Panelists showed a slide presentation on how to create districts. In addition to the above criteria, they explained that not only should they preserve the geographic integrity of cities, neighborhoods, and communities of interest, but also consider issues such as services. For example,

- Where are these communities served by medical facilities?
- Where are the fire departments?
- What is the traffic structure – what freeways are in the area?
- How are they impacted by crime?
- What is the impact of pollution on a particular community?

- What are the economic interests of a particular community?
- To try to keep one District as compact and as oval in shape as possible.

At this County Redistricting meeting, there were only a handful of members of the public speaking. It is impossible to know how many people were listening who did not participate in the discussion. Since this meeting was geared to Area "I", there was someone who mentioned that Long Beach is the second largest city in Los Angeles County in terms of population, and that they would like it to remain whole.

Since we do not actually see the members of the public or what they are contributing, I believe it was the Mayor of Lynwood that spoke about being put into a different District. He talked about the common areas, the burden of the 710 freeway; that they fight for each other; that the area that is most common with them is not in the same Supervisorial District.

Someone from North Pomona spoke about how the impact of the L.A. County Fairgrounds impacts certain communities. That District 1 is not compact. Reference was made to how this impacted a community called "Mountain Meadows" that was locked out of the discussion regarding the Fairplex's impact on the community because it was not in the same Supervisorial District. He referenced that District 5 was a very conservative District, and that it needed to be more equal in regard to liberals to conservatives.

Other than my own comments, I believe that these three speakers were all that gave input at this meeting. The meeting ended early.

Who is supposed to be doing outreach to the community regarding Redistricting?

I have seen reference to Redistricting come from my Councilmember (John Lee because I am set up to receive his newsletters. His letter to his District referenced the L.A. City Council Redistricting Commission meeting that was held on July 1st geared to Council District 12. That email went out on July 25th, 2021. **But how many people in his District receive those emails, and how many have time to read them all if they do get them?**

I also receive emails from my County Supervisor Sheila Kuehl. Her email to those who are signed up for them referenced the dates of the Redistricting meetings in her July 3rd, 2021, letter.

What other outreach is occurring regarding Redistricting? I feel like our City and our County are so focused on the extremely important issues like COVID – 19, homelessness, job losses, whether to wear a mask, businesses reopening, that the Redistricting process is going on in the dark. **But Redistricting in an equitable manner is critical to drawing the appropriate lines at all levels of government to protect and to provide services for all residents and stakeholders of every community.**

Information related to **Redistricting Los Angeles County** can be found here: <https://redistricting.lacounty.gov/>

“Next Citizens Redistricting Commission **regular meeting** will be on **July 14, 2021, at 6:30 PM (PST)** followed by the **public hearing for communities of interest input (Zone E) at 7:00 PM (PST).**”

The Los Angeles City Council Redistricting Commission

I attended the meeting of the Los Angeles City Council Redistricting Commission on July 1st, 2021. This was, as previously referenced, scheduled for residents and stakeholders of Council District 12 (CD12). At that meeting, Commissioner David Hyan, who was appointed by Councilmember John Lee, spoke about what makes a community unique; what does a community share in common; and what are the common interests and needs.

This Redistricting Commissioner spoke about applicable laws and that they must wait for the Census data which is expected in August. They need to draw the lines in a way that will strengthen the City of Los Angeles (L.A.). There needs to be equity, integrity, respect; the process needs to be data driven.

The Executive Director, Frank Cardenas, spoke about the Redistricting process every ten years. He referenced again that the districts need to be drawn equally and fairly; the districts need to be drawn in a manner that the residents can vote in a fair manner. He referenced how responsive Council Districts should be to their constituents. Other topics included the need to draw districts fairly in terms of race, color, language abilities, and minority status. He talked about issues that are faced today including affordable housing, the need for cleaner streets, and better parks.

Another panelist spoke about equal population, connecting communities of interest, and compliance with the Voting Rights Act.

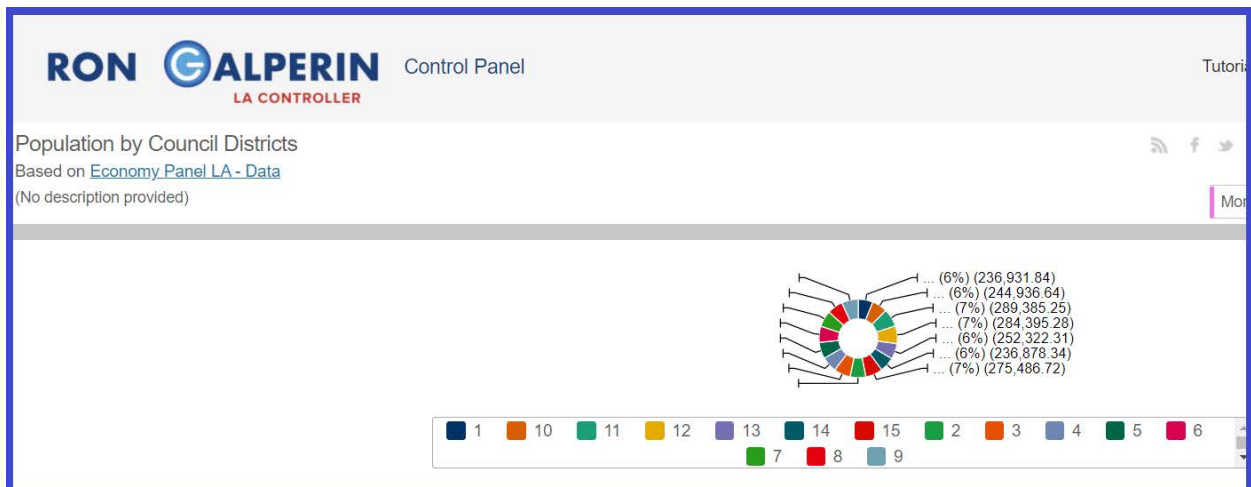
Council District 12 has 10 Neighborhood Councils in its district:
<https://cd12.org/about/communities/cd12-neighborhood-councils>

- [“Chatsworth Neighborhood Council](#) - 1st Wednesday @6:30PM
- [Granada Hills North Neighborhood Council](#) - 1st Tuesday @6:30PM
- [Granada Hills South Neighborhood Council](#) - **1st Thursday @6:30PM**
- [North Hills West Neighborhood Council](#) - 3rd Thursday @7PM
- [Northridge East Neighborhood Council](#) - 3rd Wednesday @7PM
- [Northridge South Neighborhood Council](#) - 4th Thursday @7PM
- [Northridge West Neighborhood Council](#) - 2nd Tuesday @6:15PM
- [Porter Ranch Neighborhood Council](#) - 2nd Wednesday @6:15PM
- [Reseda Neighborhood Council](#) - 3rd Monday @7PM
- [West Hills Neighborhood Council](#) - **1st Thursday @7PM”**

It appears that two of these Neighborhood Councils (NCs) had Board meetings that night. It would be understandable therefore if those two NCs did not have anyone who spoke that evening. But this is a Council District that is supposed to represent roughly 284,000 people according to the 2017 Census data on the Control Panel for Population by District by City Controller Ron Galperin:

<https://controllerdata.lacity.org/dataset/Population-by-Council-Districts/2ybs-mbdp>

In fact, based on a graphic on this website, Council District 12 has slightly more people at roughly 7% of the City of Los Angeles than other Districts which have only 6% of the population.



<https://controllerdata.lacity.org/dataset/Population-by-Council-Districts/2ybs-mbdp>

I was therefore quite surprised that while we were told at one point that there were about 59 attendees, some had difficulty in commenting. I counted roughly 15 public participants? Public comment started about 6:26 pm, and the meeting was adjourned about 7:23 pm.

How is this low stakeholder turnout going to impact the Redistricting of our City of Los Angeles?

The Los Angeles City Council Redistricting Commission website can be found here:

http://redistricting2021.lacity.org/LACCRC/html/meeting_info.html

The public hearing schedule can be found here:

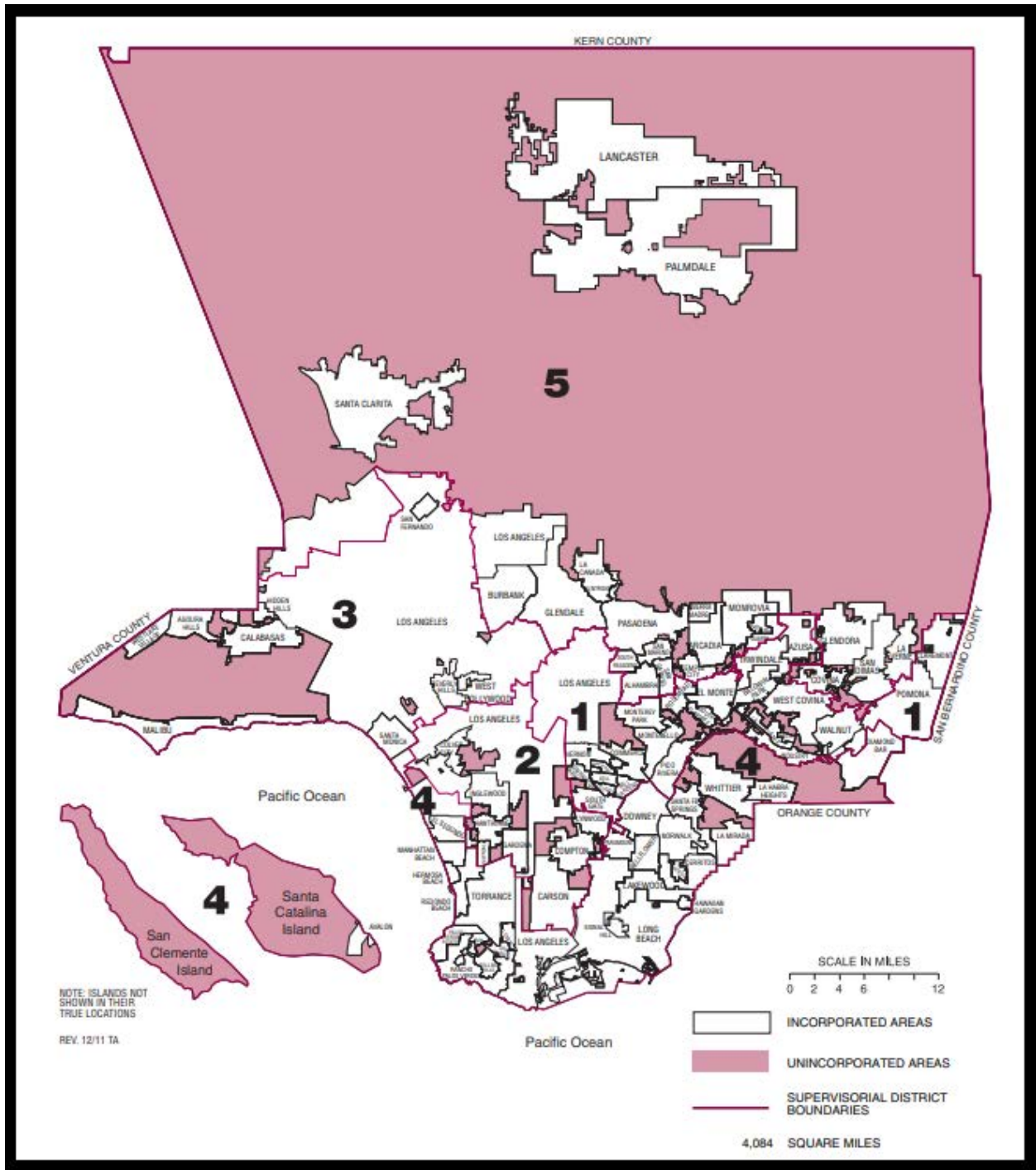
http://redistricting2021.lacity.org/LACCRC/html/meeting_publicHearing.html

“Public Hearing Schedule

1. **Thursday, July 1 (6pm)**
CD12 – John Lee
2. **Wednesday, July 7 (6pm)**
CD5 – Paul Koretz :
3. **Monday, July 12 (6pm)**
CD11 – Mike Bonin
4. **Thursday, July 15 (6pm)**
CD3 – Bob Blumenfield
5. **Wednesday, July 21 (6pm)**
CD2 – Paul Krekorian
6. **Thursday, July 29 (6pm)**
CD13 – Mitch O’Farrell
7. **Saturday, July 31 (10am)**
CD6 – Nury Martinez
8. **Wednesday, August 4 (6pm)**
CD4 – Nithya Raman
9. **Wednesday, August 11 (6pm)**
CD7 – Monica Rodriguez
Commissioner – Elizabeth Saldivar

- 10. Saturday, August 14 (10am)**
CD1 – Gil Cedillo
- 11. Wednesday, August 18 (6pm)**
CD15 – Joe Buscaino
- 12. Saturday, August 21 (10am)**
CD14 – Kevin de Leon
- 13. Wednesday, August 25 (6pm)**
Regional Public Hearing – Spanish
- 14. Saturday, August 28 (10am)**
CD10 – Mark Ridley Thomas
- 15. Tuesday, August 31 (6pm)**
Regional Public Hearing – SFV
- 16. Wednesday, September 8 (6pm)**
Regional Public Hearing – Eastside, Central, Westside
- 17. Saturday, September 11 (10am)**
CD9 – Curren Price
- 18. Saturday, September 18 (10am)**
CD 8 – Marqueece Harris Dawson
- 19. Saturday, September 25 (10am)**
Regional Public Hearing – South LA, Watts, Harbor”

Redistricting Los Angeles County from my point of view



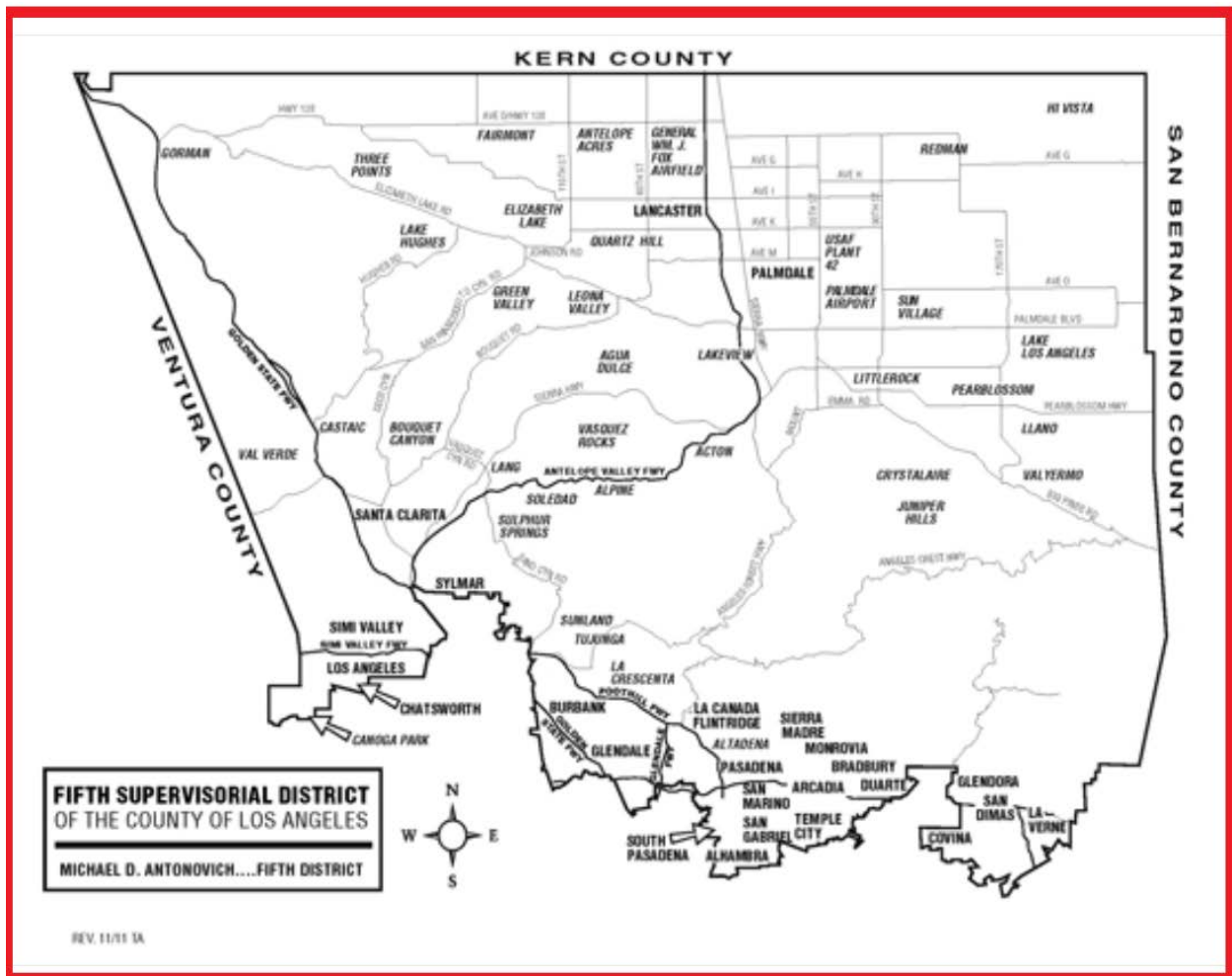
This is the Los Angeles County Board of Supervisors map with cities and Supervisorial District boundaries:

http://file.lacounty.gov/SDSInter/lac/1043452_BasicColorMap.pdf

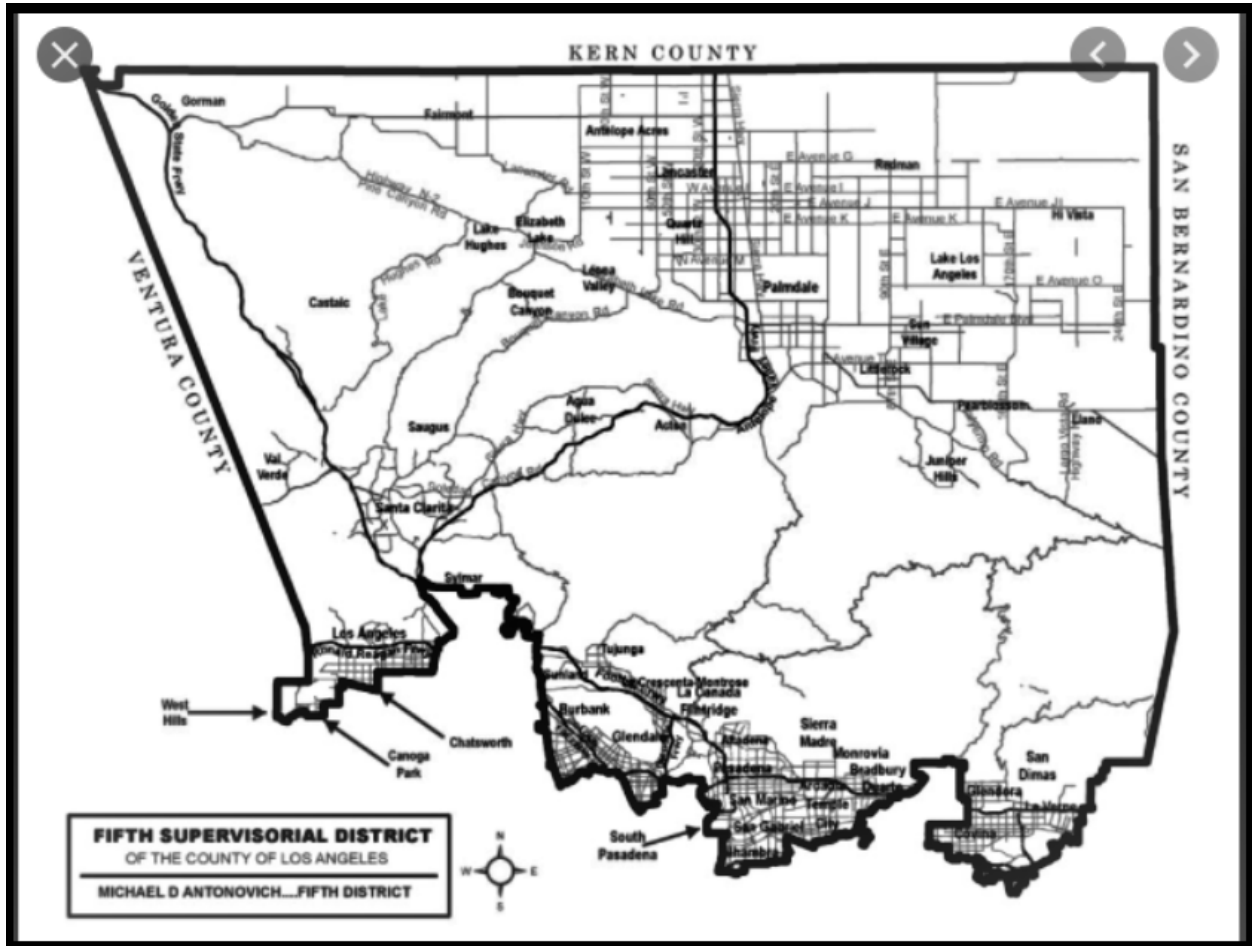
As a 45-year resident of the San Fernando Valley, I would like to see a San Fernando Valley District that is not gerrymandered between two Supervisor Districts. When the last 5th District race was held, I attended a meeting of the candidates that was televised. It was sponsored by the Los Angeles League of Conservation Voters.

After that meeting, I spoke to numerous candidates for that race. One candidate was the current 5th District Supervisor – Kathryn Barger. Another candidate was my former Councilmember, Mitch Englander. There were numerous other candidates, and as I spoke to them, I got the impression that some of them were not even aware that parts of West Hills were in the 5th District.

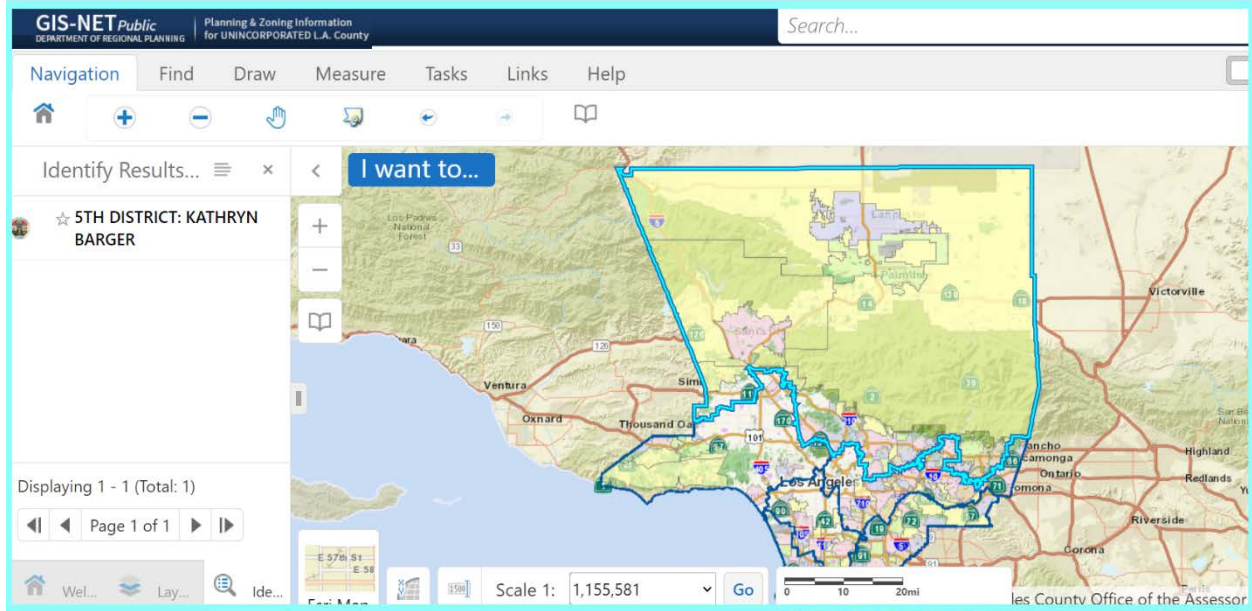
After that candidate forum, I contacted a member of former Supervisor Mike Antonovich’s staff as well as Dean Logan from the Los Angeles County Registrar Recorder’s office. I pointed to the maps, and the fact at the time, that West Hills was shown exclusively in Supervisorial District 3 – Kuehl’s district.



After that discussion, this map showing West Hills in the 5th District was created.



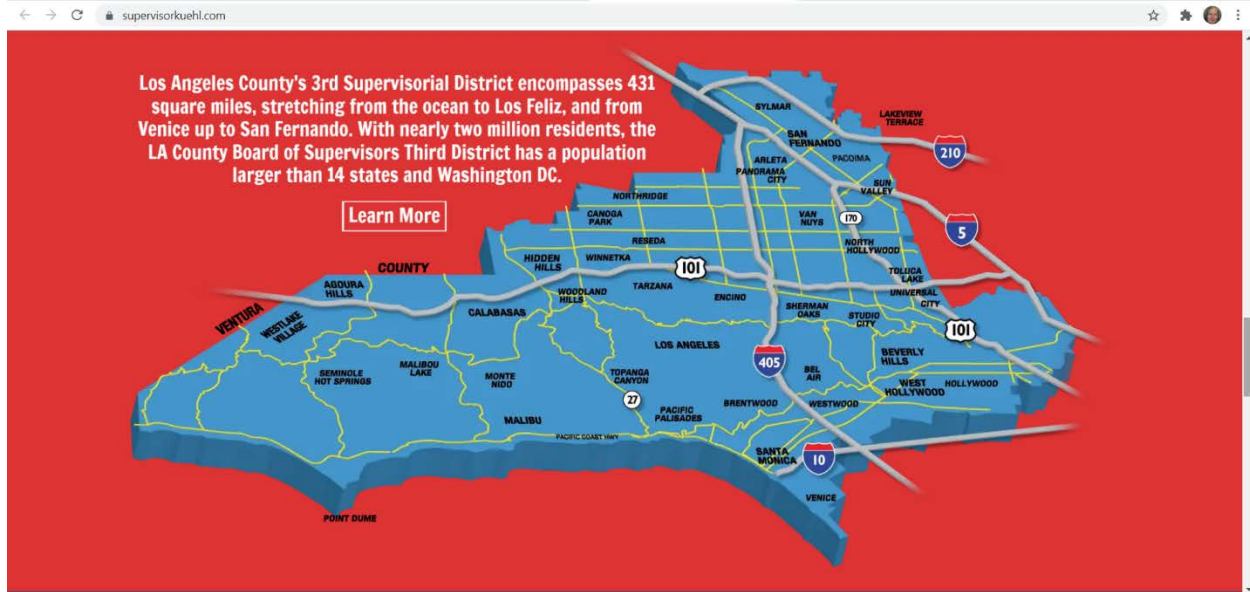
The 5th Supervisorial District - Michael D. Antonovich - Fifth District map showing West Hills.



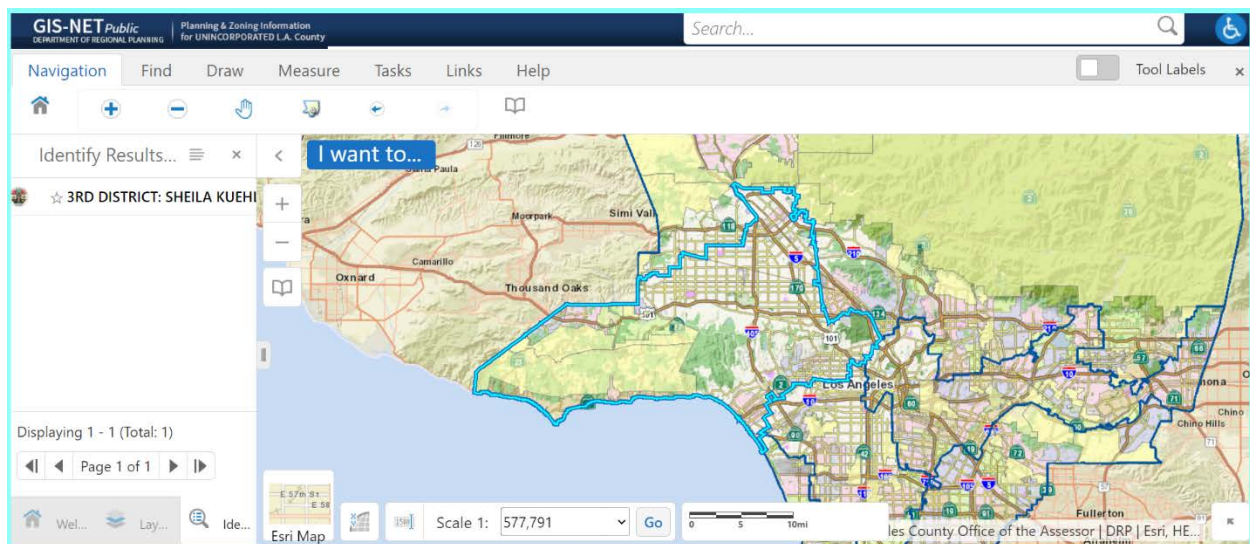
This map shows the 5th District (in yellow) relative to geological and geographical boundaries from the Los Angeles County GIS – NET mapping system for Planning and Zoning Information.

<https://rpgis.isd.lacounty.gov/Html5Viewer/index.html?viewer=GISNET Public. GIS-NET Public>

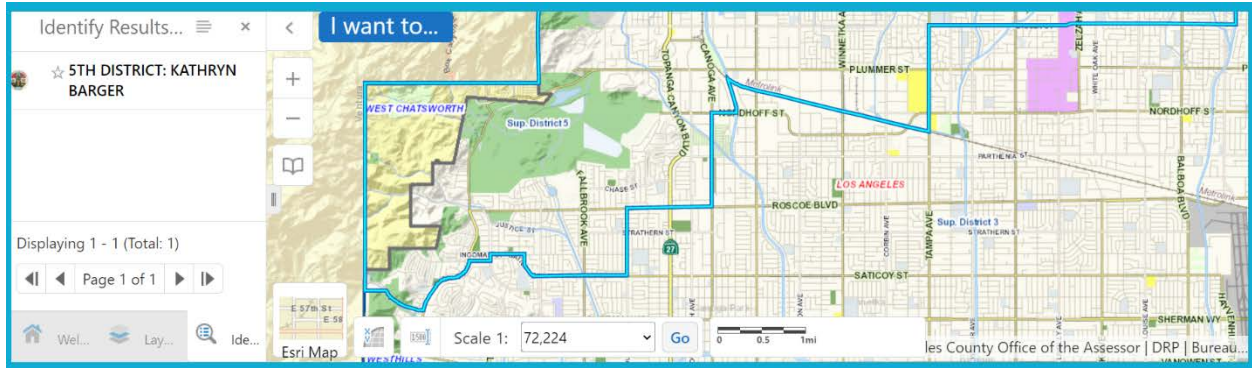
West Hills would be on the lower left side in the San Fernando Valley while the rest of the district moves north into the Santa Clarita and Antelope Valleys. What does West Hills have in common with the rest of the 5th District that goes all the way to Kern County and to the San Bernadino County line?



This is the 3rd Supervisorial District map from Supervisor Kuehl's website.



This is the 3rd District which is outlined in turquoise. It is from the same GIS – NET map software as the 5th District shown two figures above.



<https://rpgis.isd.lacounty.gov/Html5Viewer/index.html?viewer=GISNET Public. GIS-NET Public>

This map shows the way that the 5th District is drawn (in my opinion, gerrymandered). It starts at Bell Canyon Road to the West of Valley Circle Blvd. It follows Valley Circle Blvd to Ingomar where it drops back down to Saticoy. It goes north on Shoup Avenue. Then it goes east on Roscoe Blvd. to Canoga Avenue. All of these changes are within the communities of West Hills until the lines hit Topanga Canyon Boulevard and Roscoe Boulevard where the lines enter Canoga Park. The line goes north on Canoga Avenue, then right on Nordhoff Street where it appears to go north along the Orange line. Then it again turns south along the Metrolink path to Tampa Avenue where it goes north to Lassen Street. At Lassen it goes east to another “gerrymandered – why” line to the north. It may be following the Bull Creek Channel?

My point is that this part of the West San Fernando Valley has nothing in common with the northern portion of the 5th District. You can draw lines that show communities that are contiguous – such as West Hills and Canoga Park, but there is nothing “Compact” about the communities within the San Fernando Valley and the Santa Clarita and Antelope Valleys. And they certainly are not “Communities of Interest”.

What is the San Fernando Valley?

San Fernando Valley Census Boundaries



Census County Division Boundaries according to the U.S. Census Bureau

San Fernando Valley Census Boundaries from the website of Congressman Brad Sherman:

<https://sherman.house.gov/media-center/press-releases/sherman-releases-demographic-snapshot-of-san-fernando-valley>

“Dec 10, 2018

Press Release

Valley Population up 6% from 2010; Valley Residents Make More Than Most Americans, and Spend it on Housing

Washington, D.C. – Today, the U.S. Census Bureau issued a San Fernando Valley Report at the request of Congressman Brad Sherman (D-Sherman Oaks).

The more than 1.86 million people who live in the Valley exceed the populations of all but the four largest cities in the United States—New York, Los Angeles, Chicago, and Houston. According to the latest census data, the Valley's population has increased 106,000 (6%) since 2010.”

“The typical Valley family income is \$64,059, 11% higher than the country as a whole. However, nearly 2/5 of Valley homeowners spend over 35% of their

income on housing, while nationwide just over 1/5 of American homeowners spend that much. And over half of Valley renters spend over 35% of their income on housing.

While the Valley has a higher percentage of college graduates than America as a whole (34% to 31%), it also has more people without a high school diploma (19% for Valley, 13% for U.S.). This correlates with the Valley having a higher median income than America (by 11%) but also a somewhat higher percentage of families living in poverty (11.5% vs 10.5%).”

“The boundaries used for the San Fernando Valley by the Census Bureau stretch from Calabasas to Glendale.”



Map of Regions 1 - 4 - Neighborhood Council map from EMPOWERLA:

<https://empowerla.org/neighborhood-council-elections-map/>

A future San Fernando Valley map?

At the June 2021 meeting of the Valley Alliance of Neighborhood Councils (VANC), Congressman Brad Sherman was the Honored Guest Speaker.

He mentioned “Redistricting” but not in any specific reference – not related to his Congressional District or any other specific district. I made a comment to him at that meeting (which is recorded and on the website for the Neighborhood Council Alliances). I mentioned that I had attended a meeting the previous night of the Los Angeles County Citizens Redistricting Commission. I mentioned that I said that there should be a “San Fernando Valley Supervisorial District”. His comment was that he agreed, and that “VICA” – the Valley Industry Commerce Association had the same idea.

My question to all readers:

If the map as referenced above by Congressman Sherman is the San Fernando Valley per the U.S. Census Bureau, do you all support being in one contiguous Supervisorial District as is shown as the “San Fernando Valley map”.

To me, this District would be “Contiguous, Compact, and Communities of Interest” based on the Census and on the Neighborhood Council 4 Region maps above.

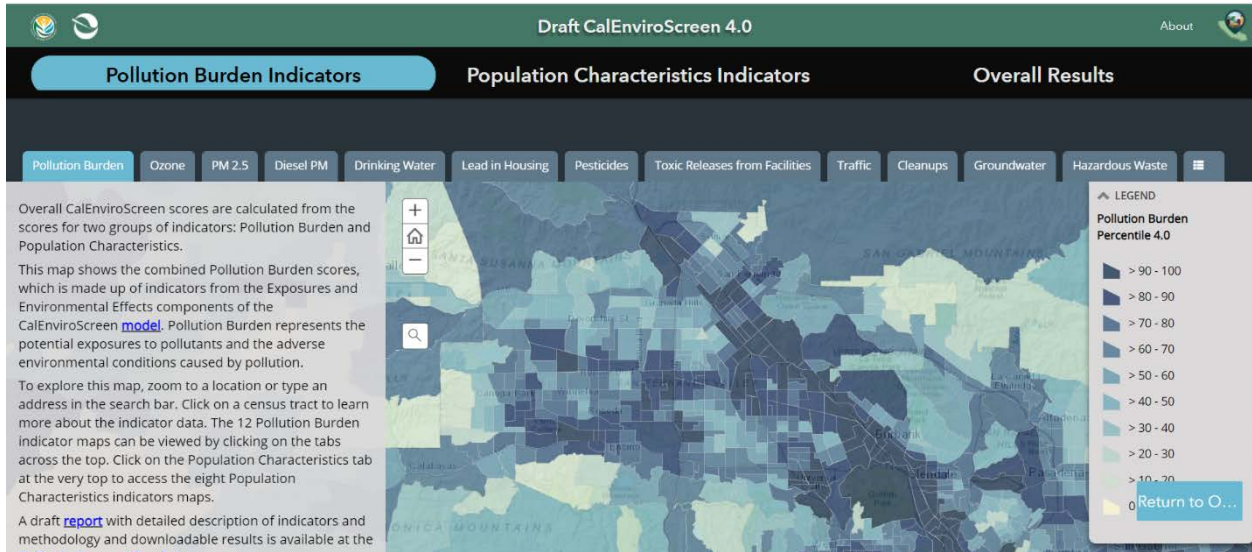
Other maps to consider:

The State of California’s Office of Environmental Health Hazard Assessment (OEHHA) has numerous maps that can be used to show various layers including Pollution Burden Indicators, Population Characteristics Indicators, Overall Results, and most recently, a new map based on Racial and Ethnic Census Tract data.

OEHHA is updating its CalEnviroScreen tool to 4.0 Beta:

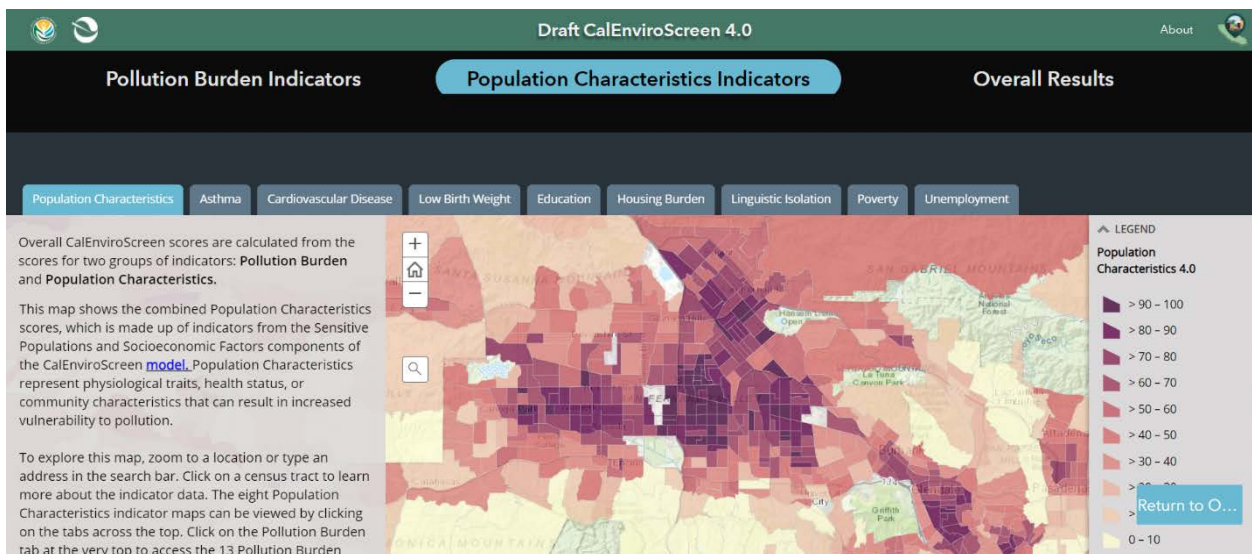
<https://oehha.ca.gov/calenviroscreen/report/draft-calenviroscreen-40>

This link will take you to several maps including the one for Pollution Burden Indicators, Population Characteristics Indicators, Overall Results.

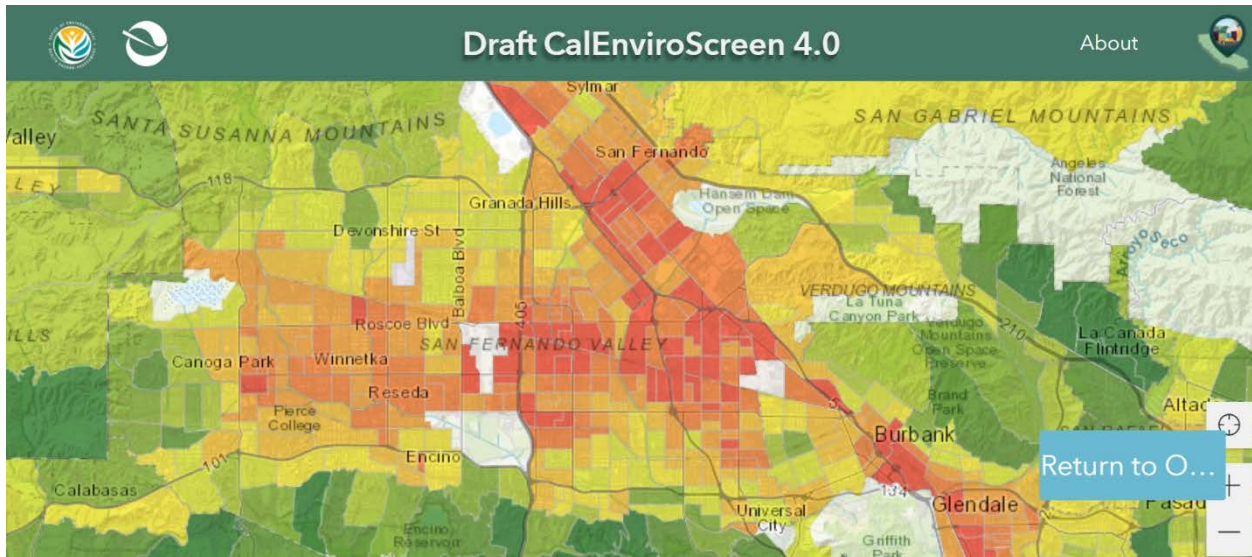


This CalEnviroScreen 4.0 map shows the census tracts in the viewing area that have some of the highest Pollution Burden Scores in the State of California – here in our San Fernando Valley.

<https://experience.arcgis.com/experience/5764b91c4c8a461693487c17b8859976/page/page/0/>



This map – using the same link as above, but just by clicking on the Population Characteristics tab, shows that the San Fernando Valley has some of the highest census tracts in the State of California in terms of Population Characteristics which include Education, Housing Burden, Linguistic Isolation, Poverty, and Unemployment.

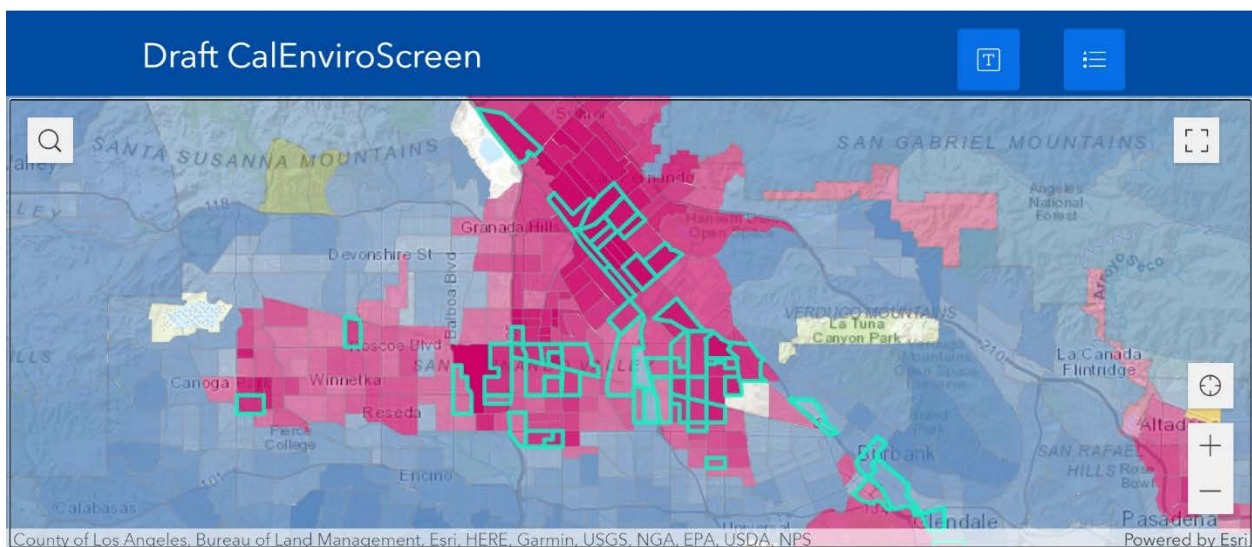


This CalEnviroScreen 4.0 map shows that the Overall Results with the areas that appear in the darkest green colors having the least overall combined scores for Pollution Burden and Population Characteristics and the census tracts in red being the highest overall for the combination of these characteristics.

CalEnviroScreen and Race / Ethnicity:

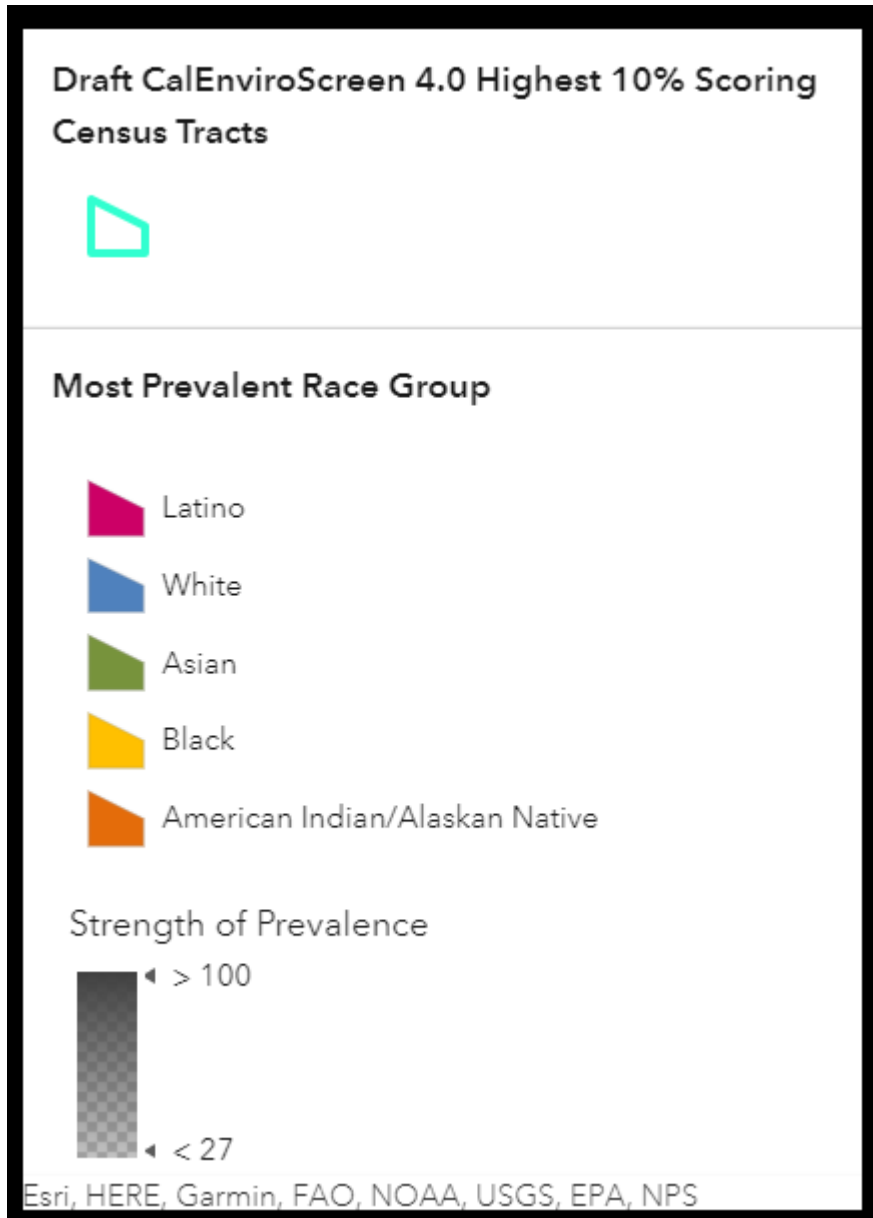
This is the link to this new tool with its explanation of Race and Ethnicity by Census Tract:

<https://storymaps.arcgis.com/stories/f555670d30a942e4b46b18293e2795a7>



<https://experience.arcgis.com/experience/8a31f053b49c4d5492e768cab7b9e219/?draft=true>

This map shows according to the CalEnviroScreen Race Ethnicity legend which census tracts are primarily Latino – Pink; White – Blue; Asian – Green; Black – Gold; American Indian / Alaskan Native – Orange. According to the legend below, the scores in the “turquoise green” color are the top 10 percent for the highest number of one Race / Ethnic group in the State.



In Conclusion: In addition to political affiliation which must be considered in drawing all lines (lines must avoid being drawn along those of a particular political party), each of the above characteristics must be considered when drawing lines for any governmental boundaries. I hope that our Los Angeles County Citizens Redistricting Commissioners and our Los Angeles City Council

Redistricting Commissioners will use all of these tools and consider a future San Fernando Valley Supervisorial District.

Submitted Public Comments for Zone E Public Hearing

Attachment A-7 begins next page.

Good evening Commissioners and Executive Officer Hartsough,

My name is Wayne Fishback and I reside at 13100 Browns Canyon Road. I might add the County alleges I live on my 340 acre ranch illegally. You may understand why when I'm finished.

My comments that follow would be considered those of a crackpot were it not for rulings by federal judges and a Department of Justice Consent Decree against the County. These include violations of the Voting Rights Act and the Fair Housing Act. You are aware of the Garza v. the County of LA and Judge Kenyon's Decision that was upheld in the 9th Circuit Court of Appeals and the US Supreme Court.

You should also be aware of the US Department of Justice investigation of the LA County Sheriff's Department and subsequent Consent Decree that determined egregious violations of the Fair Housing Act. In a nutshell it was the harassment of Blacks who dared to live in the Antelope Valley. This massive area is all contained in the Fifth District. It is certain that the Sheriff's illegal conduct was either ordered or sanctioned by former Fifth District Supervisor Antonovich.

Just a few months ago the presiding federal judge, David Carter, for the LA Alliance for Human Rights v. the County and City of LA case issued an Order and Temporary Injunction. The Order accused the County and City of structural and systemic racism from the Civil War to today. More specifically he stated, "Through redlining, containment, eminent domain, exclusionary zoning, and gentrification-designed to segregate and disenfranchise communities of color-the City and County of Los Angeles created a legacy of entrenched structural racism."

These words by a federal judge and the outcomes of a prior federal court decision and DOJ investigation provides context for my opinions.

First, it is important that the Commission take into account how the County functions. It wears two hats. One as the County of LA which governs the unincorporated area the same as a city or municipality. The other as Los Angeles County who governs such things as Health Services, Property Taxes, District Attorney's Office, Flood Control, etc. for the whole County.

The most obvious remnant of the all white "Five Little Kings" is District 5 which contains approximately 85% of all the mainland unincorporated area. When extrapolated by area, 85% of all permits issued, Sheriff's policing activities, code enforcement, etc. occur in District 5. The same 85% applies to the collection of service fees. Therefore, the Supervisor of District 5 has huge disproportionate power over the County's unincorporated area governance and "business".

Prior to the civil rights laws that took effect during the 60s discrimination was blatant such as restrictive covenants in real property deeds that excluded Blacks from ownership. But there are work arounds that accomplish the same thing but are

disguised as popular laws and policies. If not outright racist they are used with ignorance and are barriers to opportunities for minorities and the poor. Three such types are:

- (1) Environmental Preservation and Conservation
- (2) Restricting Urban Sprawl through Smart Growth, Compact Development, Transportation Oriented Development, Sustainability, etc.
- (3) Inclusionary/Integrated Housing

Since my time has expired I will explain in a subsequent meeting why these government laws and policies are many times manipulated to violate a plethora of minority civil rights and the civil rights of all races and socioeconomic classes that threaten the racist system we are fighting to end. God bless you with wisdom to fully understand all the political currents at play and consequences in evaluating how to redistrict fairly. Thank you.

Wayne Fishback

