

---

**Citizens Independent Commission Meeting  
Saturday, December 26, 2020 at 10:00 a.m.**

**LIVE STREAM WILL BEGIN SHORTLY**

---



LOS ANGELES COUNTY  
**REDISTRICTING**  
**2021**

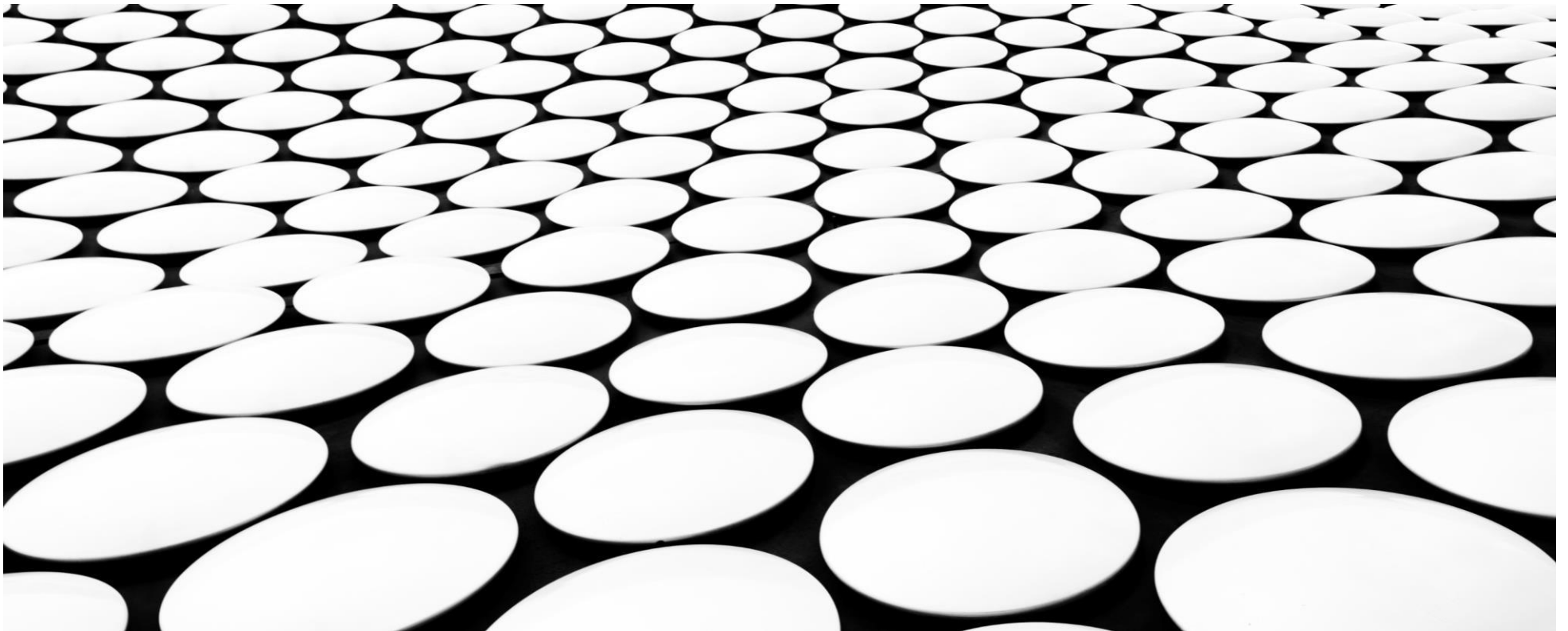


---

# Los Angeles County Citizens Redistricting Commission (CRC)

CRC Commissioner Selection Overview

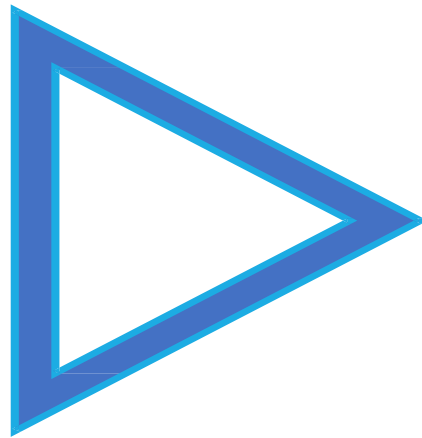
December 26, 2020 – Third Meeting



# NOTICE

THIS MEETING IS BEING RECORDED AND WILL BE POSTED AT THE LOS ANGELES COUNTY COMMISSION PUBLICATION SITE: <https://lacounty.gov/compub/>

THIS MEETING IS ALSO STREAMING LIVE AT: <https://www.youtube.com/user/GaylaKH>



**During the CRC meeting, if you need technical assistance,  
use the Q&A button at the bottom of your Zoom Webinar screen.  
Thai Le of KH is there to assist.**

Other Public Comment Submissions  
[CommServ@bos.lacounty.gov](mailto:CommServ@bos.lacounty.gov)



# **Call to Order**

## **I. CONSENT CALENDAR**

### **Agenda Item 1**

Review and take appropriate action  
on the **December 14, 2020 Revised Draft CRC Minutes**

Review and take appropriate action  
on the **December 21, 2020 Draft CRC Minutes**



# **CRC Commissioners**

1. Commissioner Jean A. Franklin
2. Commissioner David A. Holtzman
3. Commissioner Daniel M. Mayeda
4. Commissioner Nelson Obregon
5. Commissioner Priscilla Orpinela-Segura
6. Commissioner Hailes H. Soto
7. Commissioner Brian Stecher, Ph.D.
8. Commissioner John Vento



# **II. ADMINISTRATIVE MATTERS**

## **Agenda Item 2**

Commissioners' Evaluation of CRC Applicants

# CRC Purpose

- In 2016, the California Legislature passed Senate Bill 958 requiring Los Angeles County to assemble the CRC following the Federal census.
- Every 10 years, Los Angeles County's Supervisorial District boundaries adjusted
  - Each district is reasonably equal in population
  - Geographically contiguous
  - Boundaries take into account topography, geography, cohesiveness, contiguity, integrity, compactness of territory, and community of interest of the Supervisorial Districts

## Purpose

- Ensure Board of Supervisors is representative of the County's population District lines
- Shape a community's ability to elect the representative of their choice

# Reminder: CRC Current Status



## Not Officially Constituted

- The Citizens Redistricting Commission (CRC) is in the process of being formed.
  - December CRC meetings: Focus on the selection of the remaining 6 Commissioners, who will join the 8 randomly selected Commissioners.
- By December 31, 2020: The CRC Commissioner membership will be finalized.

## CRC Formalization

### By December 31, 2020

The 14 Commissioners will have the necessary:

- Quorum of 9 members
- 9 members to vote on any official actions

### During January 2021

- Commissioners Oath of Office
- Commissioners' orientation regarding:
  - Brown Act
  - Election Codes
  - CRC Bylaws
  - Selection of Chair and Vice Chair
  - Other important matters as part of their on-boarding



# December CRC Meetings – Aggressive Timeline

Selection of remaining 6 Commissions to be selected by the 8 randomly selected Commissioners by December 31, 2020



## 1<sup>st</sup> Meeting: Overview (this meeting)

- Overview of CRC applications
- Agreement on evaluation approach
- Homework: Review applications before the next CRC meeting



## 2<sup>nd</sup> Meeting: Discussions and Evaluation of 52 Applicants

- Hear public comments
- Discuss CRC analysis
- Discuss best candidates
- Select final 6 CRC Commissioners or decide a 3<sup>rd</sup> meeting is needed



## 3<sup>rd</sup> Meeting: Final List of CRC Commissioners

- Hear public comments
- Discuss best candidates
- Select final 6 CRC Commissioners

### Today's Meeting

Other Posted CRC Meeting Dates:  
Mon., Dec. 28, 10 am – tentative  
Tues., Dec. 29, 2 pm – tentative  
Tues., Dec. 29, 7 pm -- tentative

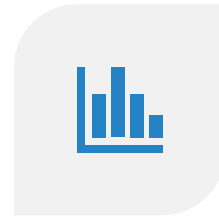
# CRC Commitment



Transparency



Integrity



Objective



Public  
Engagement

# Agenda 2. Topics to be Covered



Commissioners' Top 23 Applicants

GIS Mapping of Applicants, by Zip Code

Applicants' Reflecting Los Angeles  
County Demographics and Diversity

Identification of Top CRC Candidates

CRC Next Steps

CRC Schedule

# CRC Applicant Evaluation

Application Review

California Elections Code Section 21550(c)

Demographic estimates based on U.S. Census:  
<https://www.census.gov/quickfacts/fact/table/losangelescountycalifornia#>, July 2019

# Recap of CRC Commissioners' Evaluations to Date

- Meet the minimum qualifications, including experience – confirmed by the Registrar- Recorder
- Have met requirement of 1 Commissioner per Supervisorial District
- Your role is to ensure the 6 Commissioners to complement the 8 randomly selected Commissioners in terms of:
  - Political Party Preference
  - Experiences
  - Reflect the County's diversity, including racial, ethnic, geographic, and gender diversity

**REMINDER to the 8 CRC Commissioners:  
Cannot apply formulas or specific ratios**

Applications available by candidates' first names at: <https://lavote.Net/2020-citizens-redistricting-commission>

# Commissioners' Applicant Evaluations

**Note: Spreadsheets provide Commissioners' ratings of all 52 applicants, including High-to-Low and other sorts.**

- The 8 randomly selected Commissioners evaluated all 52 applications, which are publicly available as part of the meeting Agenda
  - Used a holistic approach of candidates' overall analytical skills relevant to redistricting/voting rights, State and Federal legal requirements, impartiality, and appreciation of LA County's diverse demographics and geography
  - Total of 215 application reviews
  - Applications had an average of 4 Commissioner reviews each
  - Average 27 applications reviewed per commissioner
- Focus on top 23 applicants

10-Point Scale Commissioner Ratings	Applicants	
	Number	Percent
8.0 or above	12	23%
7.0-7.9	11	21%
6.0-6.9	15	29%
5.0-5.9	5	10%
4.0 or below	9	17%
<b>Total</b>	<b>52</b>	<b>100%</b>

# Updates on Candidate Tables

- One applicant's race/ethnicity was incomplete in the provided Registrar-Recorder/County Clerk's table: Stevan Colin is Native American-Blackfoot Tribe/Mexican-American
- James Toma has withdrawn his name from consideration: "Please thank the members for their time and thoughtful consideration. I think they will do an excellent job."
- "NDR" includes Los Angeles County registered voters who are:
  - Not Democrat
  - Not Republican
  - No Party Preference (NPP)
  - Other Party Affiliations (e.g., Green Party)
    - Note: None of the 60 qualified applicants are from the American Independent, Libertarian, or Peace & Freedom Parties.

# To Reflect Los Angeles County

Criteria	CRC Commissioners			LA Pop
	8 Random CRC	6 Potential CRC	If Reflecting LA County	
<b>Party Affiliation</b>	<b>8</b>	<b>6</b>	<b>14</b>	
Democratic	4	3.8	7.8	56%
NDR	3	0.8	3.8	26%
Republican	1	1.5	2.5	18%
<b>Gender</b>	<b>8</b>	<b>6</b>	<b>14</b>	
Female	2	5.0	7	51%
Male	6	1.0	7	49%
Nonbinary	-	-	-	
<b>Age</b>	<b>8</b>	<b>6</b>	<b>14</b>	
Under 18				27%
Under 30	0	0.5	0.5	59% (age 18-64)
30 - 39	2	(0.8)	1.2	
40 - 49	0	2.3	2.3	
50 - 59	2	2.4	4.4	
60 - 69	2	1.7	3.7	
70 - and Over	2	(0.1)	1.9	14% (age 65 or older)
<b>Ethnicity/Race</b>	<b>8</b>	<b>6</b>	<b>14</b>	
Latinx	3	3.4	6.4	46%
White (incl. European decent)	3	0.5	3.5	25%
Asian (incl. Pacific Islander)	1	1.2	2.2	15%
Black/African American	1	0.3	1.3	9%
Other	-	0.7	0.7	5%
<b>Supervisory Districts</b>	<b>8</b>	<b>6</b>	<b>14</b>	
SD 1	2	0.8	2.8	20%
SD 2	2	0.8	2.8	20%
SD 3	1	1.8	2.8	20%
SD 4	1	1.8	2.8	20%
SD 5	2	0.7	2.8	20%

Note: The requirement of 1 Commissioner per existing SD is currently met with the 8 Commissioners.

Note: If equally divided:

- 4 SDs will have 3 CRC Commissioners
- 1 SD will have 2 CRC



## Los Angeles County Citizen Redistricting Committee (CRC)

### Commissioner Evaluated Candidates: Scores 7.0 and Above, Sorted by Party by Gender by Race

Name	Evaluation		Party	Gender, Age, Race/Ethnicity Demographics			Geographic Distribution			
	Evaluation	# Evaluators		Gender	Age (yrs)	Race / Ethnicity	SD#	City or Unincorporated Area	Zip Code	
Carolyn Williams	8.8	5	D	F	67	Black	Black/African American	2	Hawthorne	90250
<b>Doreena Wong</b>	<b>9.2</b>	<b>5</b>	<b>D</b>	<b>F</b>	<b>68</b>	<b>Asian</b>	<b>Chinese</b>	<b>3</b>	<b>Los Angeles</b>	<b>90068</b>
Margaret Milligan	8.6	5	D	F	65	White	White	3	Pacific Palisades	90272
Apolonio Morales	7.4	5	D	M	42	Latin	Mexican/Mexican American	4	Whittier	90602
Priya Sridharan	8.5	4	D	F	45	Asian	Asian Indian	5	South Pasadena	91030
<b>Theresa Fuentes</b>	<b>8.8</b>	<b>4</b>	<b>D</b>	<b>F</b>	<b>51</b>	<b>Latin</b>	<b>Mexican/Mexican American</b>	<b>5</b>	<b>Altadena</b>	<b>91001</b>
Saira Soto	8.7	3	NDR	F	40	Latin	Mexican/Mexican American	1	Los Angeles	90022
Christopher Castaneda	8.6	5	NDR	M	46	Latin	Mexican/Mexican American	1	Los Angeles	90032
<b>Maria Williams-Slaughter</b>	<b>8.0</b>	<b>4</b>	<b>NDR</b>	<b>F</b>	<b>52</b>	<b>Black</b>	<b>Black</b>	<b>4</b>	<b>Lakewood</b>	<b>90712</b>
Dan Woods	8.3	4	R	M	67	White	White	3	Santa Monica	90402
Mark Mendoza	7.0	4	R	M	68	Latin	Mexican/Mexican American	5	La Verne	91750
Molly Greene	8.8	4	D	F	35	White	White	1	Los Angeles	90026
Mona Field	8.6	5	D	F	67	White	White	1	Los Angeles	90041
Rosalinda Lugo	7.8	5	D	F	60	Latin	Mexican/Mexican American	1	La Puente	91746
Ricardo Mireles	7.3	3	D	M	55	Latin	Mexican/Mexican American	1	Los Angeles	90042
James Toma -- Withdrawn	7.0	2	D	M	49	Asian	Japanese	1	West Covina	91791
Nyanza Shaw	7.0	4	D	F	50	Black	Black/African American	2	Los Angeles	90016
Elizabeth Johnson	7.0	3	D	F	77	Black	Black/African American	2	Los Angeles	90047
Charles Lindenblatt	7.3	4	D	M	53	White	White	3	Los Angeles	90048
Joseph Roth	7.0	4	D	M	53	White	White	3	Los Angeles	90064
Lawrence Harris	8.3	4	NDR	M	64	White	White	2	Los Angeles	90048
Tim Forest	7.3	4	R	M	60	White	White	3	Woodland Hills	91367
Mary Kenney	7.2	5	R	F	70	White	White/Lithuanian American	4	Palos Verdes Estates	90274

Names in bold were identified by 2 or more Commissioners at the Dec. 21, 2020, meetings

Same zip code as Commissioners

Nearby zip code to Commissioners

# Top 11 Applicants and 8 Randomly Selected Commissioners

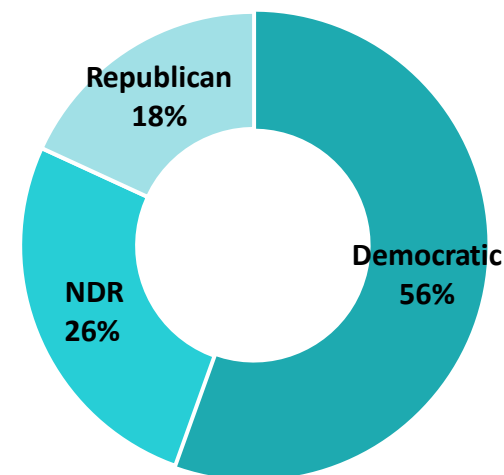
Name	Evaluation		Party	Gender, Age, Race/Ethnicity Demographics				Geographic Distribution		
	Score	# Evaluators		Gender	Age (yrs)	Race / Ethnicity	SD#	City or Unincorporated Area	Zip Code	
Carolyn Williams	8.8	5	D	F	67	Black	Black/African American	2	Hawthorne	90250
<b>Doreena Wong</b>	<b>9.2</b>	<b>5</b>	<b>D</b>	<b>F</b>	<b>68</b>	<b>Asian</b>	<b>Chinese</b>	<b>3</b>	<b>Los Angeles</b>	<b>90068</b>
Margaret Milligan	8.6	5	D	F	65	White	White	3	Pacific Palisades	90272
Apolonio Morales	7.4	5	D	M	42	Latin	Mexican/Mexican American	4	Whittier	90602
Priya Sridharan	8.5	4	D	F	45	Asian	Asian Indian	5	South Pasadena	91030
<b>Theresa Fuentes</b>	<b>8.8</b>	<b>4</b>	<b>D</b>	<b>F</b>	<b>51</b>	<b>Latin</b>	<b>Mexican/Mexican American</b>	<b>5</b>	<b>Altadena</b>	<b>91001</b>
Saira Soto	8.7	3	NDR	F	40	Latin	Mexican/Mexican American	1	Los Angeles	90022
Christopher Castaneda	8.6	5	NDR	M	46	Latin	Mexican/Mexican American	1	Los Angeles	90032
<b>Maria Williams-Slaughter</b>	<b>8.0</b>	<b>4</b>	<b>NDR</b>	<b>F</b>	<b>52</b>	<b>Black</b>	<b>Black</b>	<b>4</b>	<b>Lakewood</b>	<b>90712</b>
Dan Woods	8.3	4	R	M	67	White	White	3	Santa Monica	90402
Mark Mendoza	7.0	4	R	M	68	Latin	Mexican/Mexican American	5	La Verne	91750
<b>Names in bold were identified by 2 or more Commissioners at the Dec. 21, 2020, meetings</b>									Same zip code as Commissioners	
									Nearby zip code to Commissioners	
<b>CRC Members Randomly Selected by Auditor-Controller</b>										
Priscilla Segura	NA	NA	D	F	31	Latin	Mexican/Mexican American	1	Los Angeles	90032
Nelson Obregon	NA	NA	R	M	59	Latin	Cuban	1	Los Angeles	90065
Daniel Mayeda	NA	NA	D	M	62	Asian	Japanese	2	Culver City	90230
Jean Franklin	NA	NA	D	F	72	Black	Black	2	Long Beach	90805
Brian Stecher	NA	NA	D	M	73	White	White	3	Santa Monica	90403
Hailes Soto	NA	NA	NDR	M	39	Latin	Mexican/Mexican American	4	Downey	90241
John Vento	NA	NA	NDR	M	51	White	White	5	Palmdale	93551
David Holtzman	NA	NA	NDR	M	60	White	White	5	Burbank	91504

# To Reflect Los Angeles County By Political Party Preference

Criteria	CRC Commissioners			LA Pop	Top 23	
	8 Random CRC	6 Potential CRC	If Reflecting LA County		11 Out of Top 23	Top 23
<b>Overall Numbers of Commissioners</b>	8	6	14			
<b>Party Affiliation</b>	8	6	14			
Democratic	4	3.8	7.8	56%	6	15
NDR, including No Party Preference	3	0.6	3.6	26%	3	4
Republican	1	1.5	2.5	18%	2	4

Shall be as proportionate as possible:  
The political party preferences of the CRC Commissioners are not required to be exactly the same as the proportion of political party preferences among the registered voters of Los Angeles County.

**Los Angeles County Population  
Based on Voter Registration  
Total = 5,813,167**



Additional Sources:

[Registrar-Recorder Voter Registration Information: https://lavote.net/home/voting-elections/voter-registration/statement-of-registration/statement-of-registration](https://lavote.net/home/voting-elections/voter-registration/statement-of-registration/statement-of-registration)

Registrar-Recorder Voter Registration specific report, October 19, 2020:

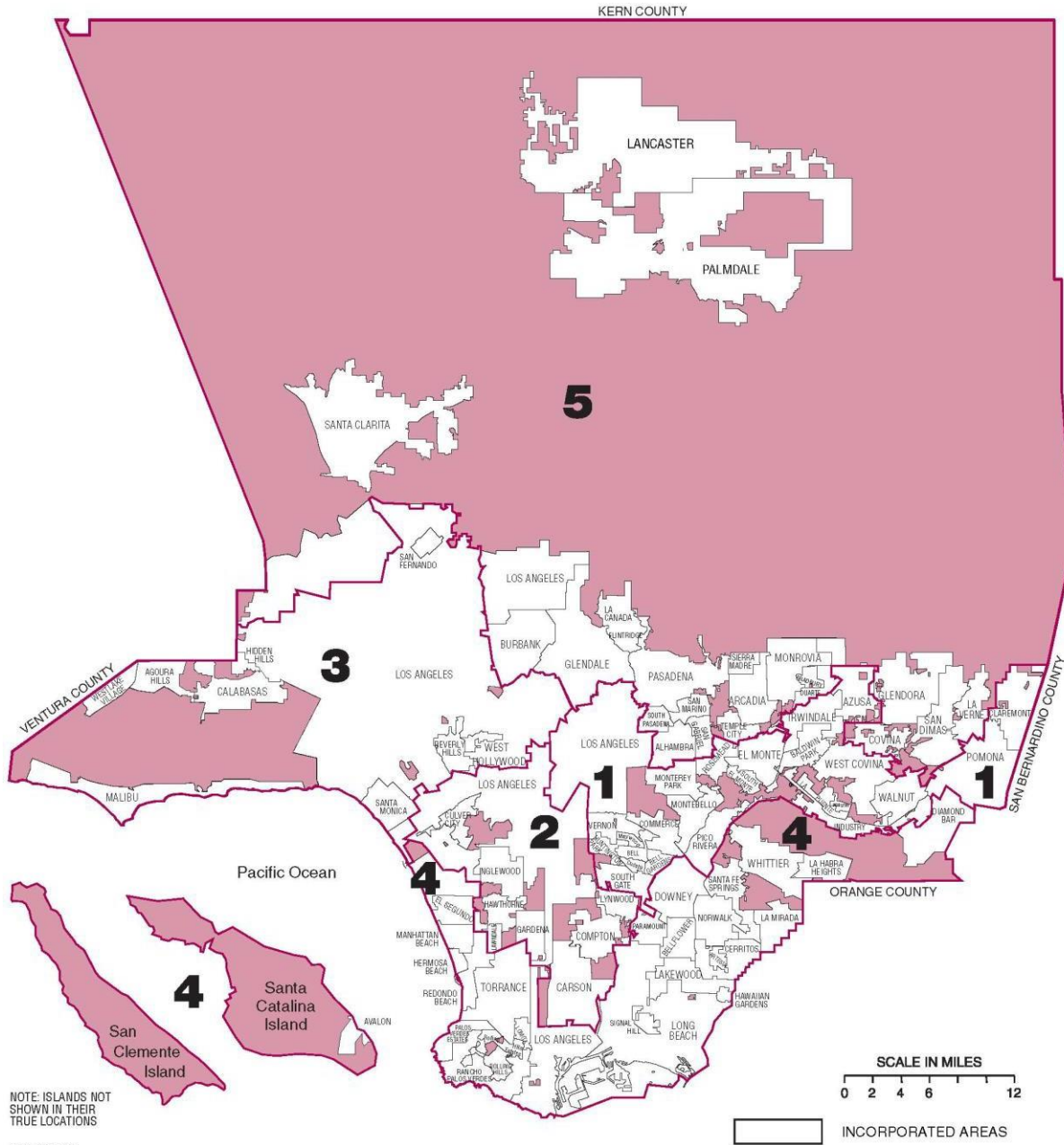
[https://lavote.net/docs/rcc/election-info/LA\\_ROR\\_County\\_Summary\\_10192020.pdf](https://lavote.net/docs/rcc/election-info/LA_ROR_County_Summary_10192020.pdf)

To Reflect Los Angeles County Diversity Criteria	CRC Commissioners			LA Pop	11 Out of Top 23	
	8 Random CRC	6 Potential CRC	If Reflecting LA County		Top 23	Top 23
<b>Overall Numbers of Commissioners</b>	8	6	14			
<b>Gender</b>	8	6	14			
Female	2	5.1	7	51%	7	13
Male	6	0.9	7	49%	4	10
Nonbinary	-		-			
<b>Age</b>	8	6	14			
Under 30	-	8.3			0	0
30 - 39	2	(2.0)			0	1
40 - 49	-	-	8.3	59%	4	5
50 - 59	2	(2.0)			2	6
60 - 69	2	(2.0)			5	9
70 - and Over	2	(0.0)	2.0	14%		2
<b>Ethnicity/Race</b>	8	6	14			
Latin	3	3.4	6.4	46%	5	7
White (incl. European decent)	3	0.5	3.5	25%	2	9
Asian (incl. Pacific Islander)	1	1.2	2.2	15%	2	3
Black/African American	1	0.3	1.3	9%	2	4
Other	-	0.7	0.7	5%		0
<b>Supervisorial Districts</b>	8	6	14			
SD 1	2	0.8	2.8	20%	2	7
SD 2	2	0.8	2.8	20%	1	4
SD 3	1	1.8	2.8	20%	3	6
SD 4	1	1.8	2.8	20%	2	3
SD 5	2	0.7	2.8	20%	3	3

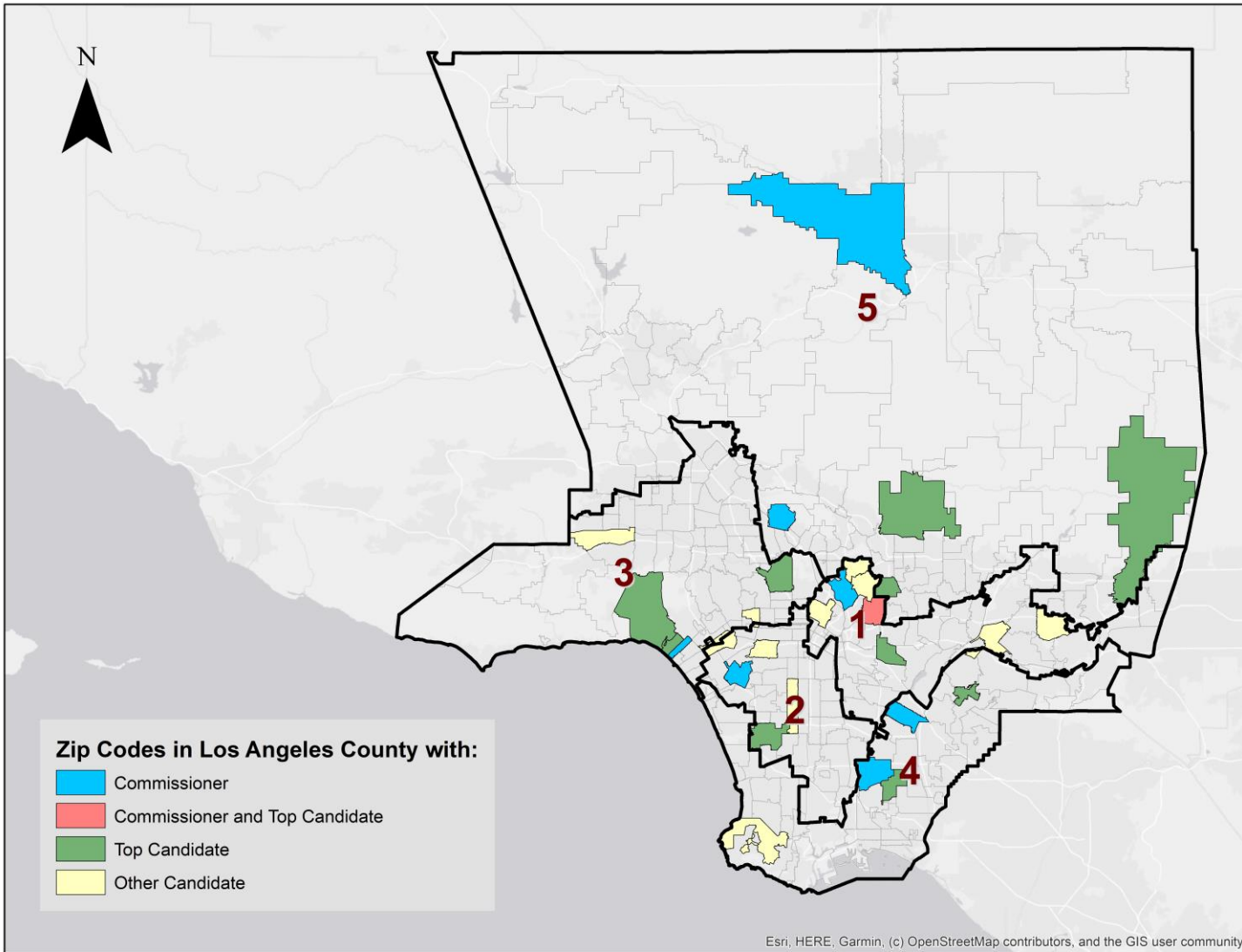
U.S. Census Population estimates,  
July 1, 2019, (V2019)

10,039,107

# LOS ANGELES COUNTY



Current Supervisorial  
Districts



**DISTRICT 1**

- 2 Commissioners
- 2 Top Candidates
- 5 Other Candidates

**DISTRICT 2**

- 2 Commissioners
- 1 Top Candidate
- 3 Other Candidates

**DISTRICT 3**

- 1 Commissioners
- 3 Top Candidate
- 3 Other Candidates

**DISTRICT 4**

- 1 Commissioners
- 2 Top Candidate
- 1 Other Candidates

**DISTRICT 5**

- 2 Commissioners
- 3 Top Candidate
- 0 Other Candidates



# DISTRICT 1

*\*zip code straddles multiple districts*

## Commissioner(s):

Nelson Obregon (R), Los Angeles, 90065

Priscilla Segura (D), Los Angeles, **90032**

## Top Candidate(s):

Christopher Castaneda (NDR), Los Angeles, **90032**

Saira Soto (NDR), Los Angeles, 90022

## Other Candidate(s):

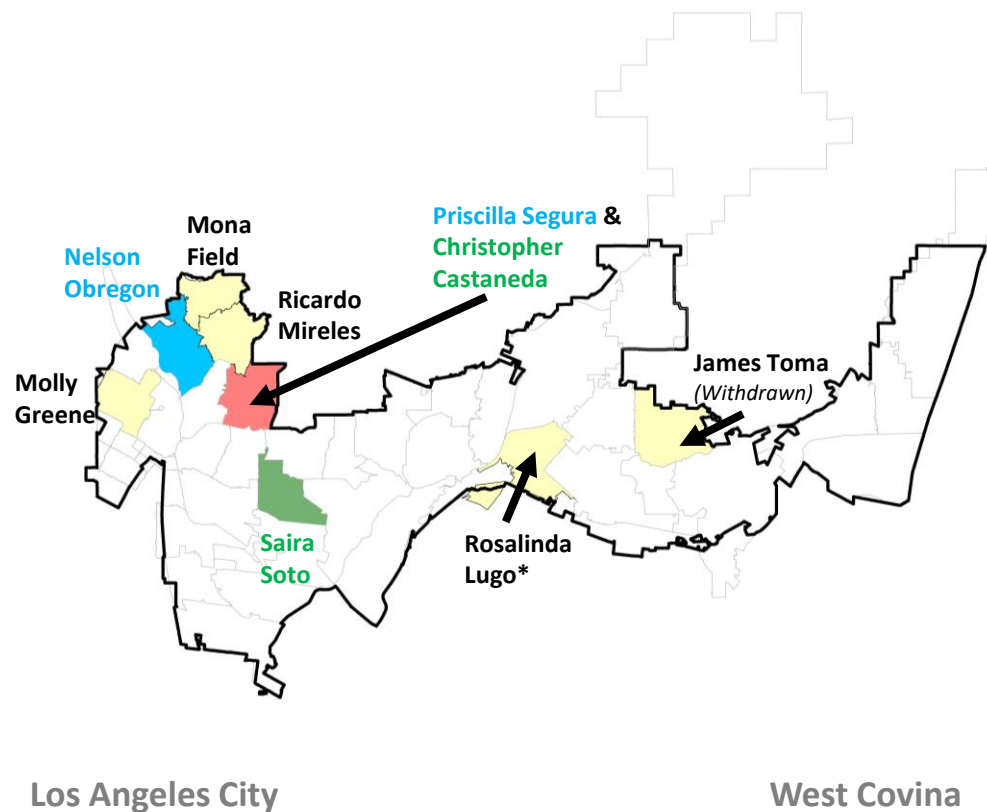
Mona Field (D), Los Angeles, 90041

Molly Greene (D), Los Angeles, 90026

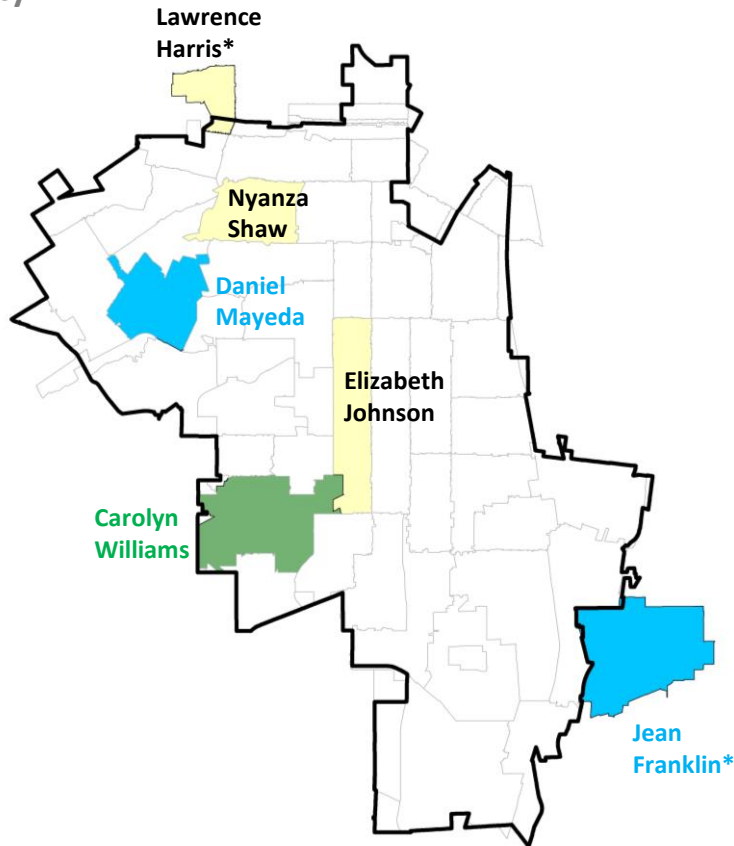
Rosalinda Lugo (D), La Puente, 91746\*

Ricardo Mireles (D), Los Angeles, 90042

James Toma (D), West Covina, 91791



Los Angeles City



Long Beach



# DISTRICT 2

*\*zip code straddles multiple districts*

## Commissioner(s):

Jean Franklin (D), Long Beach, 90805\*  
Daniel Mayeda (D), Culver City, 90230

## Top Candidate(s):

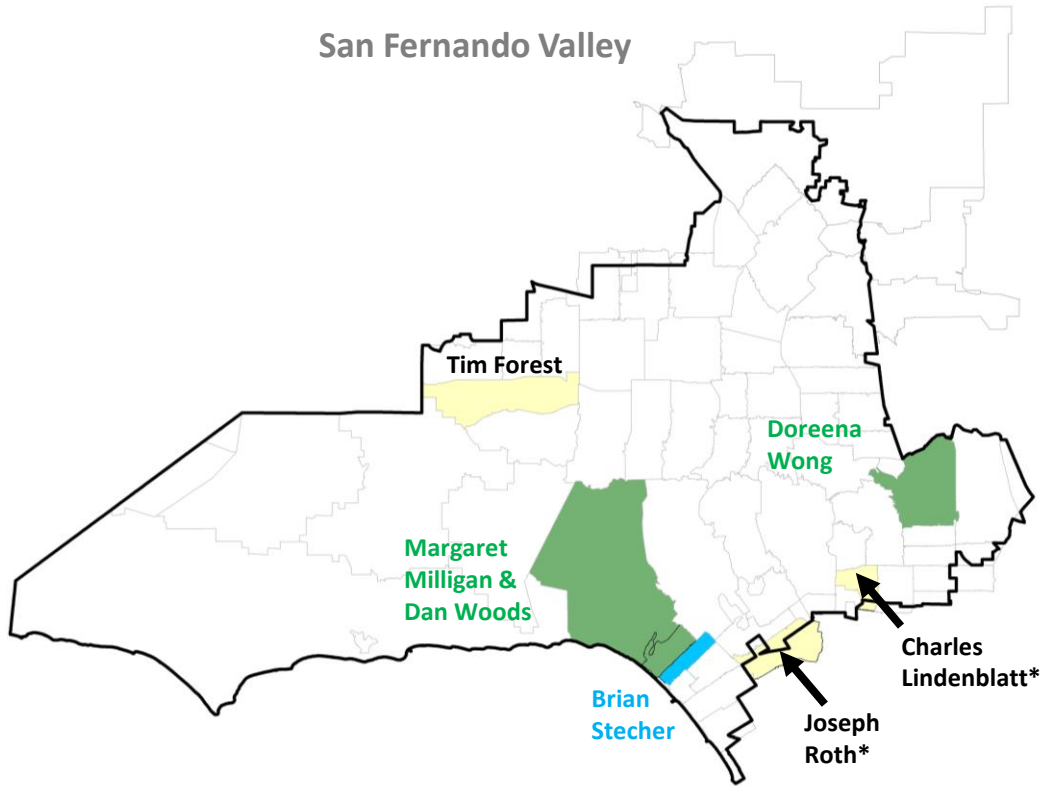
Carolyn Williams (D), Hawthorne, 90250

## Other Candidate(s):

Lawrence Harris (NDR), Los Angeles, 90048\*  
Elizabeth Johnson (D), Los Angeles, 90047  
Nyanza Shaw (D), Los Angeles, 90016



San Fernando Valley



Santa Monica/Los Angeles

# DISTRICT 3

*\*zip code straddles multiple districts*

## Commissioner(s):

Brian Stecher (D), Santa Monica, 90403

## Top Candidate(s):

Margaret Milligan (D), Pacific Palisades, 90272

Doreena Wong (D), Los Angeles, 90068

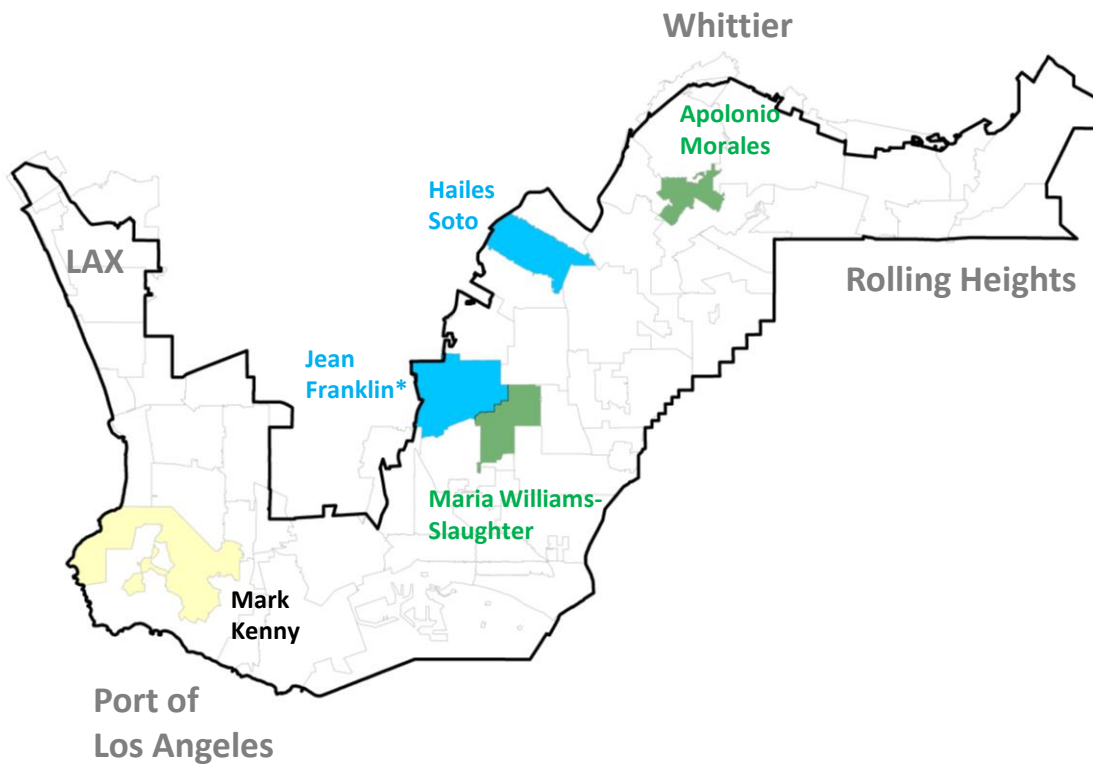
Dan Woods (R), Santa Monica, 90402

## Other Candidate(s):

Charles Lindenblatt (D), Los Angeles, 90048\*

Tim Forest (R), Woodland Hills, 91367

Joseph Roth (D), Los Angeles, 90064\*



# DISTRICT 4

*\*zip code straddles multiple districts*

## Commissioner(s):

Hailes Soto (NDR), Downey, 90241

## Top Candidate(s):

Apolonio Morales (D), Whittier, 90602

Maria Williams-Slaughter, Lakewood, 90712

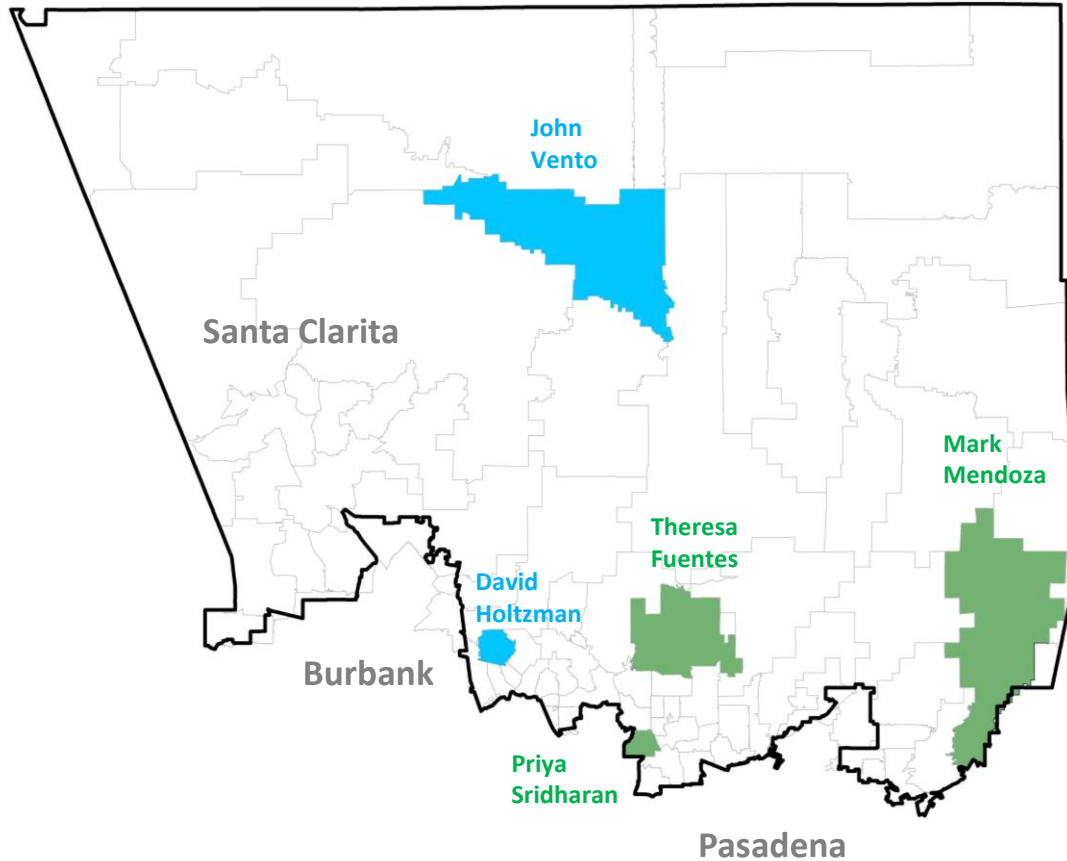
## Other Candidate(s):

Mark Kenney (R), Palos Verdes, 90274

### Zip Codes in Los Angeles County with:

- Commissioner
- Commissioner and Top Candidate
- Top Candidate
- Other Candidate

## Antelope Valley/Lancaster/Palmdale



# DISTRICT 5

### Commissioner(s):

David Holtzman (NDR), Burbank, 91504  
John Vento (NDR), Palmdale, 93551

### Top Candidate(s):

Theresa Fuentes (D), Altadena, 91001  
Mark Mendoza (R), La Verne, 91750  
Priya Sridharan (D), South Pasadena, 91030

#### Zip Codes in Los Angeles County with:

- Commissioner
- Commissioner and Top Candidate
- Top Candidate
- Other Candidate

# Public Comment on Agenda Item 2

Public Comment: Opportunity for members of the public to address the CRC

If you wish to speak, provide the following information through the Q&A button at the bottom of your screen as though you were completing a Public Comment card:

- **Public Comment Speaker**
- **Your Name**
- **Your Affiliation/Organization**

If on a phone line, press \*9 to raise your hand.  
Once called upon, press \*6 to unmute and speak.

## Each Person Gets 1 Minute

When you speak, share your name and affiliation at the beginning.  
If you feel comfortable, please turn on your video while speaking.

If you do not wish to speak, you can also enter public comment through the Q&A button by providing:

- **Your Name**
- **Your Affiliation/Organization**
- **Your Public Comment to be read aloud**



# **Public Comment on Agenda Item 2 (cont'd.)**

Public Correspondence Received Posted

Public Comments Received During this CRC Meeting through Q&A:

**Reading Aloud Limited to 1 Minute**

---

## Next Steps: CRC Consensus and Roll Call on Any Motions



Shortened candidate list



Final selection target

# CRC Commissioners Discussions of Final 6 Commissioners

Name	Party	Gender, Age, Race/Ethnicity Demographics				Geographic Distribution		
		Gender	Age (yrs)	Race / Ethnicity		SD#	City or Unincorporated Area	Zip Code
Carolyn Williams	D	F	67	Black	Black/African American	2	Hawthorne	90250
<b>Doreena Wong</b>	<b>D</b>	<b>F</b>	<b>68</b>	<b>Asian</b>	<b>Chinese</b>	<b>3</b>	<b>Los Angeles</b>	<b>90068</b>
Margaret Milligan	D	F	65	White	White	3	Pacific Palisades	90272
Apolonio Morales	D	M	42	Latin	Mexican/Mexican American	4	Whittier	90602
Priya Sridharan	D	F	45	Asian	Asian Indian	5	South Pasadena	91030
<b>Theresa Fuentes</b>	<b>D</b>	<b>F</b>	<b>51</b>	<b>Latin</b>	<b>Mexican/Mexican American</b>	<b>5</b>	<b>Altadena</b>	<b>91001</b>
Saira Soto	NDR	F	40	Latin	Mexican/Mexican American	1	Los Angeles	90022
Christopher Castaneda	NDR	M	46	Latin	Mexican/Mexican American	1	Los Angeles	90032
<b>Maria Williams-Slaughter</b>	<b>NDR</b>	<b>F</b>	<b>52</b>	<b>Black</b>	<b>Black</b>	<b>4</b>	<b>Lakewood</b>	<b>90712</b>
Dan Woods	R	M	67	White	White	3	Santa Monica	90402
Mark Mendoza	R	M	68	Latin	Mexican/Mexican American	5	La Verne	91750

Names in bold were identified by 2 or more Commissioners at the Dec. 21, 2020, meetings

Same zip code as Commissioners  
Nearby zip code to Commissioners

# CRC Schedule



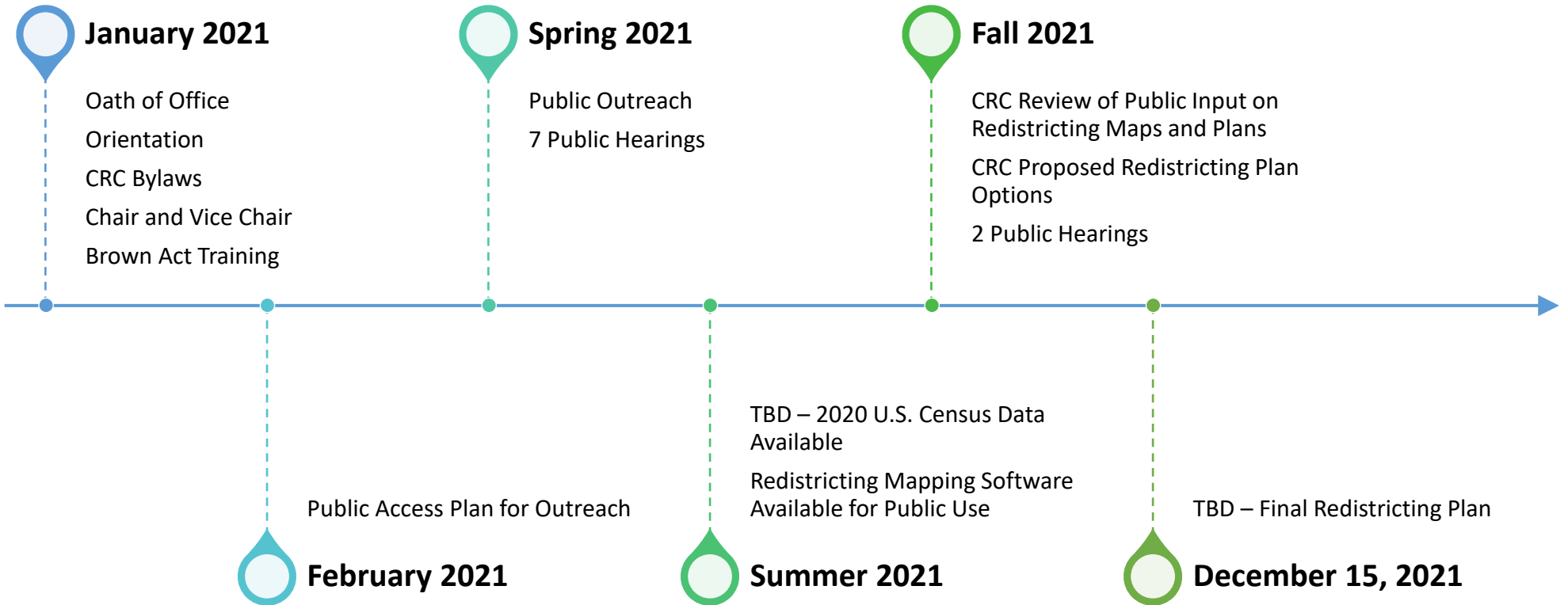
## **In the event Commissioner selection is NOT finalized, next CRC Meetings**

- Mon., Dec. 28, 10am – Tentative – Posted
- Tues., Dec. 29, 2pm – Tentative – Posted
- Tues., Dec. 29, 7pm – Tentative – Posted

## **In the event Commissioner selection is finalized, suggest:**

- Request Los Angeles County Executive Office to:
  - Notify the selected Commissioners, similar to how the 8 randomly selected Commissioners were notified
  - Notify the remaining applicants regarding the list of Commissioners selected
  - Alert applicants who are being considered as Alternates about the possibility to determine their continued interest
- Request CRC Executive Director to welcome the 6 Commissioners
- Request CRC Executive Director to survey the 14 Commissioners to establish the first meeting date/time in January where the Commissioners will be sworn in, develop Bylaws, and establish a regular meeting calendar to start

# CRC 2021 Milestones





# **III. MISCELLANEOUS**

## **Agenda Item on Public Comments**

For special meetings, the Brown Act does not require the CRC to have public comment for matters not on the agenda.

Given the more focused nature of the CRC meetings to select the final 6 Commissioners and desire not to impose on the Commissioners' time during the holidays, we have opted to confine public comment solely to the agenda items listed.



## **III. MISCELLANEOUS**

# **Agenda Item 3**

Matters Not Post:

Commissioners, do we have any “Matters Not Posted” to be placed on a future agenda?

# Adjournment





# Citizens Redistricting Commission Staff

## Executive Director

Gayla Kraetsch Hartsough, Ph.D., President

### KH Consulting Group

1901 Avenue of the Stars, Suite 200

Los Angeles, CA 90067

(310) 203-5417 tel

(310) 203-5419 fax

[gayla@khcg.com](mailto:gayla@khcg.com)

## Independent Legal Counsel

Holly O. Whatley, Esq., Shareholder

Pamela Graham, Esq., Senior Counsel

Colantuono, Highsmith & Whatley, PC

790 E. Colorado Blvd., Suite 850

Pasadena, CA 91101-2109

(213) 542-5700 tel

(213) 542-5710 fax

[hwhatley@chwlaw.us](mailto:hwhatley@chwlaw.us)

**Citizens Independent Commission Meeting  
Saturday, December 26, 2020 at 10:00 a.m.**

**\* RECESS \***

**LIVE STREAM WILL RESUME SHORTLY**



LOS ANGELES COUNTY  
**REDISTRICTING**  
2021

